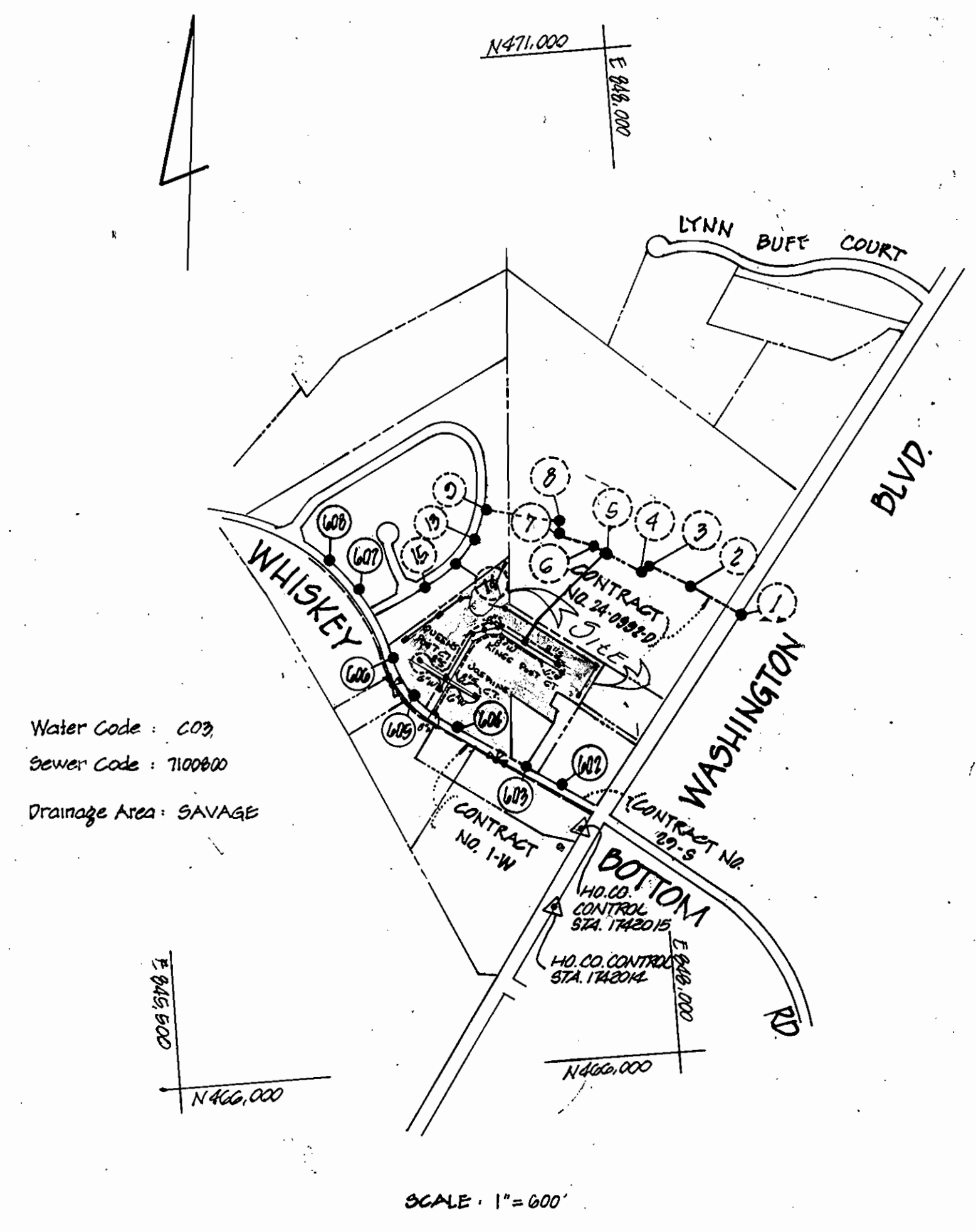


TYPE OF BUILDINGS	RESIDENTIAL
NUMBER OF LOTS	42 & LOCAL OPEN SPACE - Lot 49
NUMBER OF SHC'S	42
NUMBER OF WHC'S	42
DRAINAGE AREA	SAVAGE, LITTLE PATENT

**GENERAL NOTES**

- APPROXIMATE LOCATION OF EXISTING MAINS SHOWN THE CONTRACTOR SHALL TAKE ALL NECESSARY PRECAUTIONS TO PROTECT EXISTING MAINS AND SERVICES AND MAINTAIN UNINTERRUPTED SUPPLY. ANY DAMAGE INCURRED SHALL BE REPAIRED IMMEDIATELY TO THE SATISFACTION OF THE INSPECTOR, AT THE CONTRACTOR'S EXPENSE.
- ALL HORIZONTAL CONTROLS ARE BASED ON MARYLAND STATE COORDINATES. 1742014 & 1742015
- ALL VERTICAL CONTROLS ARE BASED ON U.S.G.S. DATUM.
- ALL PIPE ELEVATIONS SHOWN ARE INVERT ELEVATIONS.
- CLEAR ALL UTILITIES BY A MINIMUM OF 6', CLEAR ALL POLES BY 2'-0" MINIMUM OR TUNNEL AS REQUIRED. ANY COST INCURRED TO THE CONTRACTOR FOR TUNNELING OR BRACING AT POLES SHALL BE INCLUDED IN UNIT PRICES BID FOR EXCAVATION AND BACKFILL.
- FOR DETAILS NOT SHOWN ON THE DRAWINGS USE HOWARD COUNTY STANDARD DETAILS.
- FOR MATERIAL AND CONSTRUCTION METHODS USE HOWARD COUNTY STANDARD SPECIFICATIONS.
- CONTRACTOR SHALL LOCATE EXISTING UTILITIES A MINIMUM OF TWO (2) WEEKS IN ADVANCE OF CONSTRUCTION OPERATIONS IN THE VICINITY OF PROPOSED UTILITIES AT HIS OWN EXPENSE.
- CONTRACTOR SHALL NOTIFY THE FOLLOWING UTILITIES OR AGENCIES AT LEAST FIVE (5) WORKING DAYS BEFORE STARTING WORK SHOWN ON THESE PLANS.  
STATE HIGHWAY ADMINISTRATION - 931-8533  
BALTO GAS & ELECTRIC CO. UNDERGROUND GAS DISTRIBUTION CUSTOMER SERVICE - 605-0123  
ENGINEERING - DAMAGE CONTROL - 234-5621  
MISS UTILITY - 1-550-0100  
CHESAPEAKE & POTOMAC (C&P) TELEPHONE CO. - 785-7976  
AMERICAN TELEPHONE & TELEGRAPH - CABLE LOCATION DIVISION - 393-3553  
COLONIAL PIPELINE CO. - 781-4641  
BUREAU OF UTILITIES HOWARD COUNTY - 992-2360
- TREES ARE TO BE PROTECTED FROM DAMAGE TO MAXIMUM EXTENT. TREES LOCATED WITHIN THE CONSTRUCTION STRIP ARE NOT TO BE REMOVED OR DAMAGED BY THE CONTRACTOR.
- CONTRACTOR SHALL REMOVE TREES, STUMPS, AND ROOTS ALONG LINE OF EXCAVATION AS DIRECTED BY INSPECTOR. PAYMENT FOR SUCH REMOVAL SHALL BE INCLUDED IN THE UNIT PRICE BID FOR EXCAVATION AND BACKFILL.
- PLACE REGULATION "MEN WORKING" AND WARNING SIGNS AS REQUIRED TO COMPLY WITH MARYLAND STATE HIGHWAY ADMINISTRATION MANUAL OF TRAFFIC CONTROL FOR HIGHWAY CONSTRUCTION AND MAINTENANCE OPERATIONS.
- ALL WATER MAINS TO BE DIP CURVED UNLESS OTHERWISE NOTED.
- TOP OF ALL WATER MAINS TO HAVE A MINIMUM OF 3'-1/2" COVER UNLESS OTHERWISE NOTED.
- VALVES ADJACENT TO TEES SHALL BE STRAPPED TO TEES.
- BLOCK ALL FITTINGS WITH CONCRETE.
- BURY LINE ELEVATIONS ON FIRE HYDRANTS SHALL BE SET TO THE ELEVATIONS SHOWN ON THE DRAWINGS. ALL FIRE HYDRANTS SHALL BE STRAPPED AND BUTTRESSED WITH CONCRETE IN ACCORDANCE WITH STANDARD DETAILS. SOIL AROUND THE HYDRANT TO BE COMPACTED IN ACCORDANCE WITH SECTION 1003.1003 OF THE STANDARD SPECIFICATIONS.
- ALL WATER HOUSE CONNECTIONS SHALL BE FOR AN INSIDE METER SETTING.
- THE CONTRACTOR SHALL NOT OPERATE ANY WATER MAIN VALVES ON THE EXISTING SYSTEM.
- ALL SEWER MAINS SHALL BE C.S.P.P., V.C.P.P., PVC OR A.C.P. CLASS 2400 UNLESS OTHERWISE NOTED.
- THE CONTRACTOR SHALL PROVIDE A JOINT IN ALL SEWER MAINS WITHIN 2'-0" OF EXTERIOR MANHOLE WALL.
- ALL MANHOLES SHALL BE 4'-0" INSIDE DIAMETER, UNLESS OTHERWISE NOTED.
- WATER MAIN AND WATER HOUSE CONNECTION LINES MUST HAVE A MINIMUM OF ONE FOOT SEPARATION FROM THE SANITARY SEWER AND SEWER HOUSE CONNECTIONS AS THEY CROSS EXCEPT AT CROSSINGS, WATER AND SEWER LINES SHALL HAVE A MINIMUM HORIZONTAL SEPARATION OF 10'
- ALL DIP FITTINGS SHALL BE IN ACCORDANCE WITH AWWA SPECIFICATION C-103 DUCTILE IRON COMPACT FITTINGS, 3" THROUGH 12" FOR WATER AND OTHER LIQUIDS.



**STRATFORD DOWNS**  
**CONTRACT NO. 24-1658-D**  
**HOWARD COUNTY, MARYLAND**

NOTE: SEDIMENT CONTROL MEASURES FOR THIS CONTRACT WILL BE IMPLEMENTED IN ACCORDANCE WITH THE PROVISIONS OF THESE SPECIFICATIONS AND ALSO AS SHOWN ON THE GRADING AND SEDIMENT CONTROL PLAN F-88-35.

REVIEWED FOR HOWARD S.C.D. AND MEETS TECHNICAL REQUIREMENTS.  
U.S. SOIL CONSERVATION SERVICE  
THIS DEVELOPMENT IS APPROVED SOIL EROSION AND SEDIMENT CONTROL BY THE HOWARD SOIL CONSERVATION DISTRICT.

**NOTES:**

- FOR WATER & SEWER PLAN SEE SHEET 2 OF 4
- FOR SANITARY SEWER PROFILES SEE SHEET 3 OF 4
- FOR WATER PROFILES SEE SHEET 4 OF 4

ITEM	ESTM D	AS-BUILT	MATERIAL / SUPPLIER
BLOW-OFF	3	3/0	
6" CAP & BUTTRESS	3 EA.	3/0	GRIFIN PIPE PRODUCT / ABSTED MD INC.
8" x 6" CRASS	1 CA.	1/0	" " " " " " " "
8" x 6" TEE	2 EA.	2/0	" " " " " " " "
12" x 8" TAPPING ELBOW	1 EA.	1/0	" " " " " " " "
6" VALVE	3 EA.	4/0	" " " " " " " "
8" VALVES	1 EA.	2/0	" " " " " " " "
45° BEND	1 EA.	1/00	" " " " " " " "
22 1/2° BEND	2 EA.	2/00	" " " " " " " "
8" x 6" REDUCER	1 EA.	1/00	" " " " " " " "
FIRE HYDRANT VALVE	2 EA.	2/00	MULLER CO. / BEL AIR RD. SURETY CO.
6" DIA. B.H.C.	1000 LF	1122.2 LF	TYPE K / FOR D Co
3/4" DIA. W.H.C.	200 LF	207	" " " " " " " "
1" DIA. W.H.C.	658 LF	607	" " " " " " " "
8" SEWER MAIN	1443 LF	1466.19	CERTAINTEED ASTIR 35 / B & C VTR
6" WATER MAIN	501 LF	570.01 LF	GRIFIN PIPE PRODUCT / ABSTED MD INC.
8" WATER MAIN	150 LF	650.0 LF	" " " " " " " "
ITEM	ESTM D	AS-BUILT	MATERIAL / SUPPLIER



DEPARTMENT OF PUBLIC WORKS  
DIRECTOR OF PUBLIC WORKS  
CHIEF, BUREAU OF UTILITIES

BOENDER ASSOCIATES, INC.  
ENGINEERS · PLANNERS · SURVEYORS  
3565 ELLICOTT MILLS DR.  
ELLICOTT CITY, MARYLAND 21043  
(301) 465-7777

DES:	
DRN: JBD/HD	
CHK:	
DATE:	
RY:	
NO.:	
REVISION:	
DATE:	

**TITLE SHEET**

**STRATFORD DOWNS**  
6TH ELECTION DISTRICT  
CONTRACT NO. 24-1658-D

SCALE  
1" = 600'  
SHEET  
1 OF 4

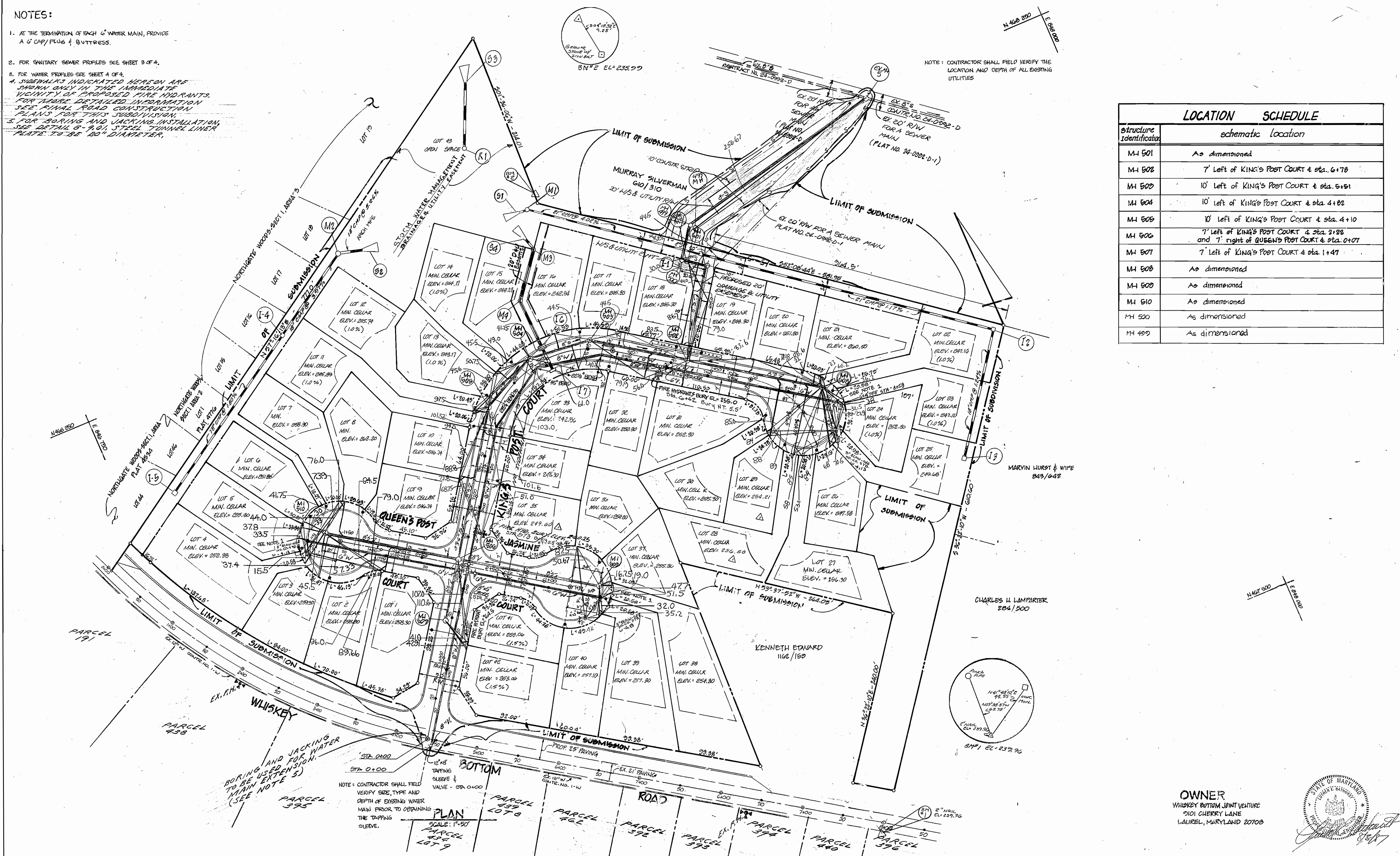


**NOTES:**

1. AT THE TERMINATION OF EACH 6" WATER MAIN, PROVIDE A 6" CAP/PLUG & BUTTRESS.
2. FOR SANITARY SEWER PROFILES SEE SHEET 3 OF 4.
3. FOR WATER PROFILES SEE SHEET 4 OF 4.
4. SIDEWALKS INDICATED HEREON ARE SHOWN ONLY IN THE IMMEDIATE VICINITY OF PROPOSED FIRE HYDRANTS. FOR THESE DETAILED INFORMATION SEE FINAL ROAD CONSTRUCTION PLANS FOR THIS SUBDIVISION.
5. FOR BORING AND JACKING INSTALLATION, SEE DETAIL 6-9.01, STEEL TUNNEL LINER PLATE TO BE 20" DIAMETER.

NOTE: CONTRACTOR SHALL FIELD VERIFY THE LOCATION AND DEPTH OF ALL EXISTING UTILITIES

Structure Identification	LOCATION SCHEDULE schematic location
M-1 501	As dimensioned
M-1 502	7' Left of KING'S POST COURT & sta. 6+78
M-1 503	10' Left of KING'S POST COURT & sta. 5+51
M-1 504	10' Left of KING'S POST COURT & sta. 4+82
M-1 505	10' Left of KING'S POST COURT & sta. 4+10
M-1 506	7' Left of KING'S POST COURT & sta. 2+28 and 7' right of QUEEN'S POST COURT & sta. 0+07
M-1 507	7' Left of KING'S POST COURT & sta. 1+47
M-1 508	As dimensioned
M-1 509	As dimensioned
M-1 510	As dimensioned
M-1 511	As dimensioned
M-1 512	As dimensioned



DEPARTMENT OF PUBLIC WORKS  
 Director of Public Works: [Signature] 2/2/88  
 Chief, Bureau of Engineering: [Signature] 2-2-88  
 Chief, Bureau of Utilities: [Signature] 2-1-88  
 Chief, Land Development Div.: [Signature] 2-2-88

BOENDER ASSOCIATES, INC.  
 ENGINEERS · PLANNERS · SURVEYORS  
 3565 ELLICOTT MILLS DR.  
 ELLICOTT CITY, MARYLAND 21043  
 (301) 465-7777

DES: JN			
DRN: JB	JCO	RELOCATE SEWER MAIN	2/24/88
CHK: LB	JCO	RELOCATE FIRE HYDRANT	4/23/88
DATE:	D.M.M.	REVISE MIN. C.E. LOTS 28, 29, 35	7/1/88
BY:	NO.	REVISION	DATE

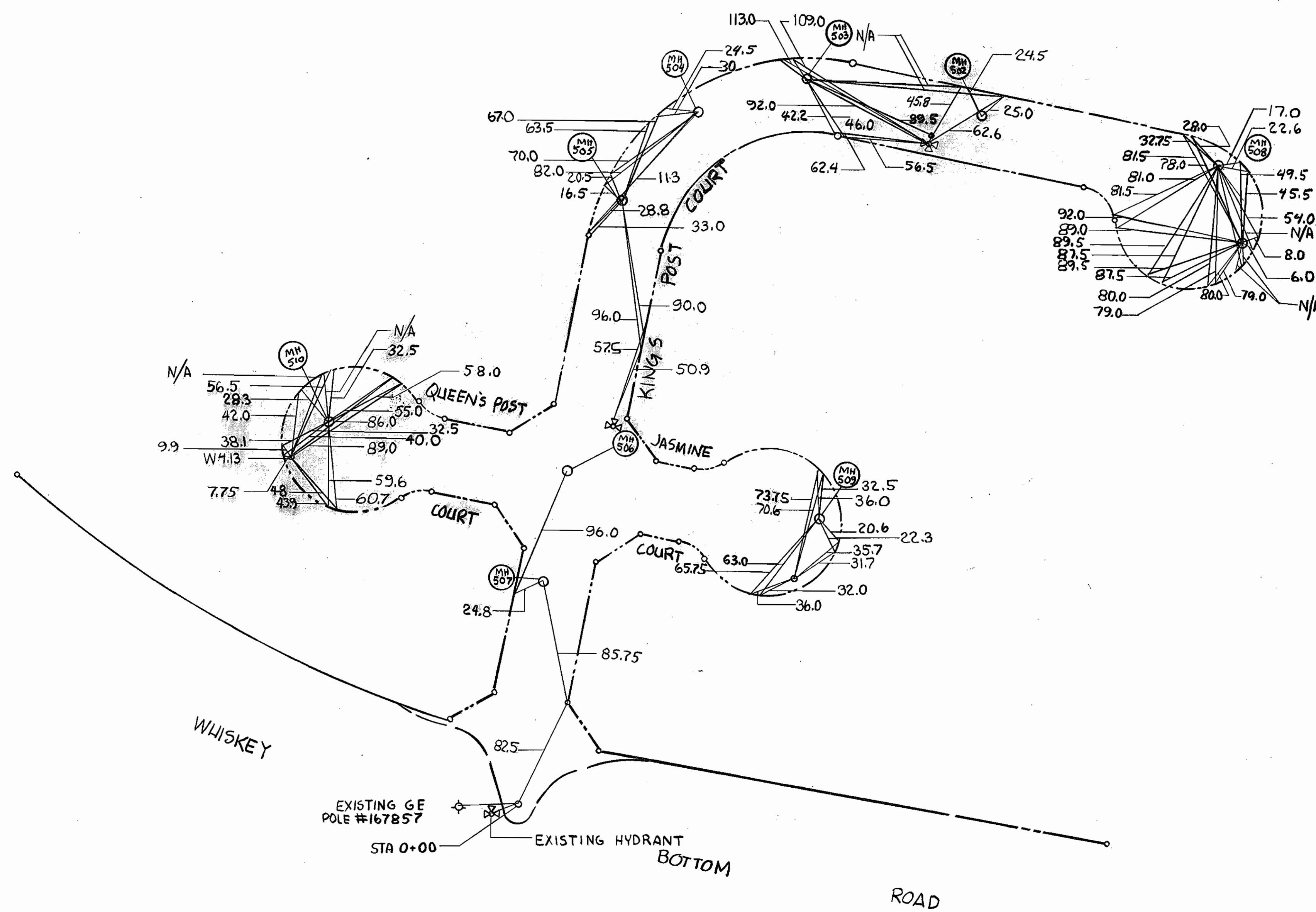
**WATER & SEWER PLAN**

OWNER  
 WHISKEY BOTTOM JOINT VENTURE  
 2101 CHERRY LANE  
 LAUREL, MARYLAND 20708

6TH ELECTION DISTRICT  
 CONTRACT NO. 24-1658-D

SCALE 1" = 50'  
 SHEET 2 OF 4  
 6-16-88 AS-BUILT 8645





DEPARTMENT OF PUBLIC WORKS  
HOWARD COUNTY, MARYLAND

Howard County Bureau of Engineering  
Survey / Drafting Division  
Public Works Annex  
11226 Route 216  
Laurel, MD 20707

DES:				
DRN: S.REZ.	SR	1	ADDING IN THE WATER CON.	6-15-88
CHK:				
DATE:	BY	NO.	REVISION	DATE

WATER & SEWER  
PLAN

6TH ELECTION DISTRICT  
CONTRACT NO 24-1658-D

SCALE  
1"=50'  
SHEET  
2B OF 4

600' SCALE MAP NO. \_\_\_\_\_ BLOCK NO. \_\_\_\_\_

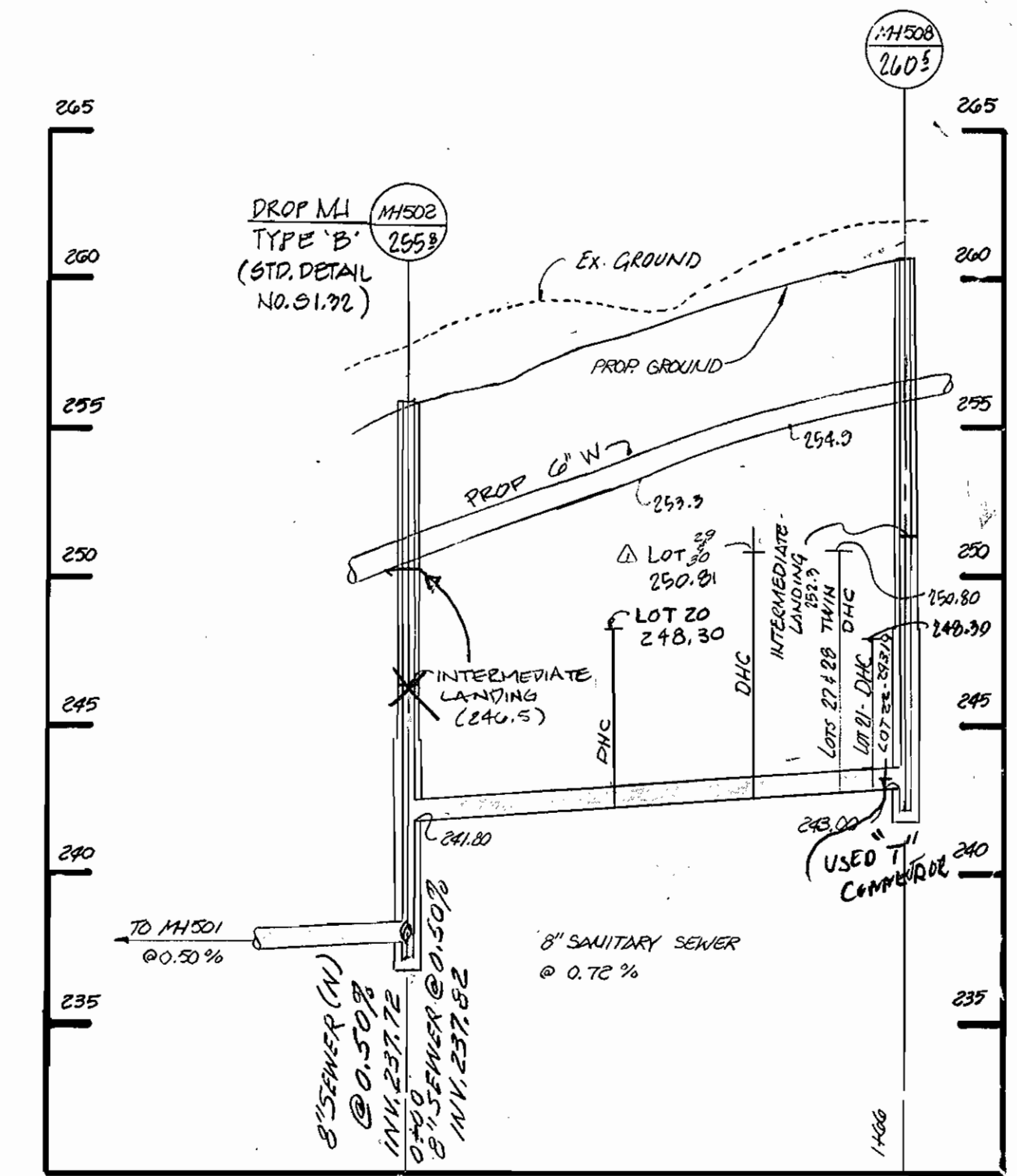
6-15-88 AS-DUILY

LOT #	INV. S.H.C. @ SEWER	INV. S.H.C. @ R/W	MIN. CELLAR EL.	INV. D.H.C. @ TOP OF DROP	HOWARD CO. STD. DETAIL
1	N/A	255.70	258.30	254.66	S 2.12
2	N/A	255.70	258.30	254.66	S 2.12
3	N/A	256.20	259.30	255.10	S 2.11
4	247.08 @ MH	247.08	252.28	N/A	S 2.11 @ MANHOLE
5	251.40 @ MH	252.00	255.30	N/A	S 2.11 @ MANHOLE
6	247.08 @ MH	247.68	251.58	N/A	S 2.11 @ MANHOLE
7	247.00	247.27	251.97	N/A	S 2.14
8	247.00	247.27	251.07	N/A	S 2.14
9	243.28	243.04	246.74	N/A	S 2.14
10	243.28	243.64	246.74	N/A	S 2.14
11	241.27	241.44 (1.0%)	245.09 (1.0%)	N/A	S 2.12
12	241.27	241.44 (1.0%)	245.74 (1.0%)	N/A	S 2.14
13	239.92	240.12 (1.0%)	243.17 (1.0%)	N/A	S 2.14
14	239.92	240.12 (1.0%)	243.17 (1.0%)	N/A	S 2.14
15	239.08 @ MH	239.78	243.28	N/A	S 2.14 @ MANHOLE
16	238.84	239.24	242.54	N/A	S 2.14
17	N/A	242.70	245.30	241.74	S 2.12
18	N/A	242.20	245.30	242.00	S 2.12
19	N/A	245.40	248.30	245.20	S 2.12
20	N/A	248.70	251.30	247.94	S 2.12
21	N/A	248.00	240.50	247.66	S 2.12
22	243.05	243.10 (1.0%)	247.16 (1.0%)	N/A	S 2.11
23	243.08 @ MH	243.42 (1.0%)	247.12 (1.0%)	N/A	S 2.11 @ MANHOLE
24	243.08 @ MH	243.70	252.20	N/A	S 2.11 @ MANHOLE
25	243.08 @ MH	244.48	249.68	N/A	S 2.14 @ MANHOLE
26	243.08 @ MH	244.48	247.58	N/A	S 2.14 @ MANHOLE

LOT #	INV. S.H.C. @ SEWER	INV. S.H.C. @ R/W	MIN. CELLAR EL.	INV. DROP CONNECTION @ TOP OF DROP	HOWARD CO. STD. DETAIL
27	N/A	250.80	254.70	249.08	S 2.12
28	N/A	260.80	254.50	249.08	S 2.12
29	N/A	250.81	254.21	249.38	S 2.12
30	N/A	250.81	254.30	249.38	S 2.12
31	N/A	249.30	252.30	248.66	S 2.12
32	N/A	247.70	250.70	246.66	S 2.12
33	238.72	239.96	242.56	N/A	S 2.11
34	N/A	246.20	248.30	244.56	S 2.12
35	N/A	246.50	249.60	245.86	S 2.12
36	N/A	251.50	254.80	250.64	S 2.12
37	251.80 @ MH	252.10	255.20	N/A	S 2.11 @ MH
38	243.80 @ MH	249.10	254.30	N/A	S 2.11 @ MH
39	252.90 @ MH	259.60	257.30	N/A	S 2.14 @ MH
40	252.90 @ MH	259.60	257.10	N/A	S 2.14 @ MH
41	252.08 @ MH	252.08 (1.5%)	259.06 (1.5%)	N/A	S 2.14 @ MH
42	252.08 @ MH	252.68 (1.5%)	259.06 (1.5%)	N/A	S 2.14 @ MH

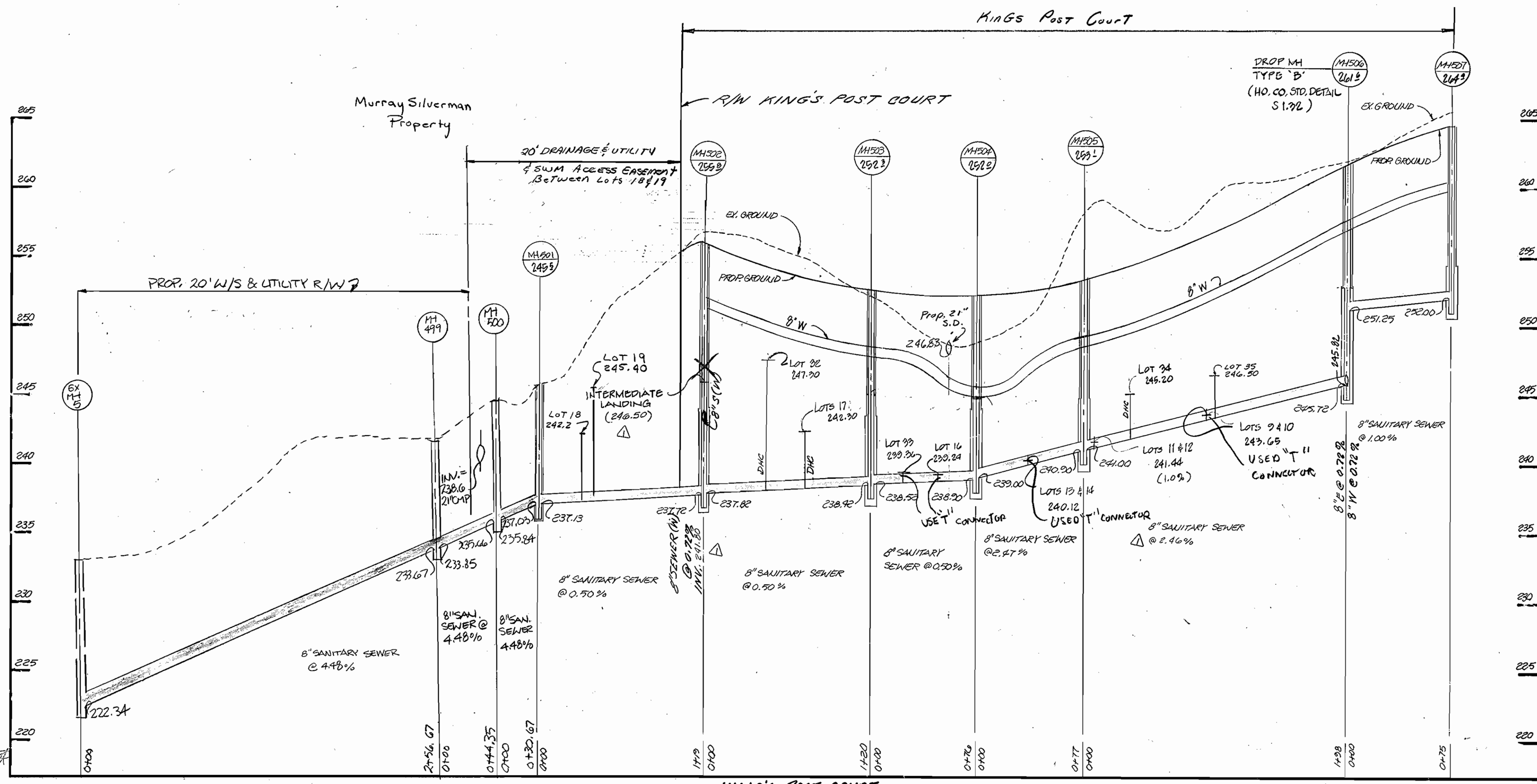
NOTES:

- FOR WATER & SEWER PLAN SEE SHEET 2 OF 4
- FOR WATER PROFILES SEE SHEET 4 OF 4
- MANHOLE NUMBERS & TOP ELEVATIONS SHOWN AS :
- SEWER HOUSE CONNECTIONS INVERTS SHOWN ON PROFILES ARE AT R/W
- FOR MH'S WITH INTERMEDIATE LANDING, SEE HO. CO. STD. DETAIL G 5.15
- UNLESS OTHERWISE NOTED, MH'S ARE STD. DETAIL G 5.12



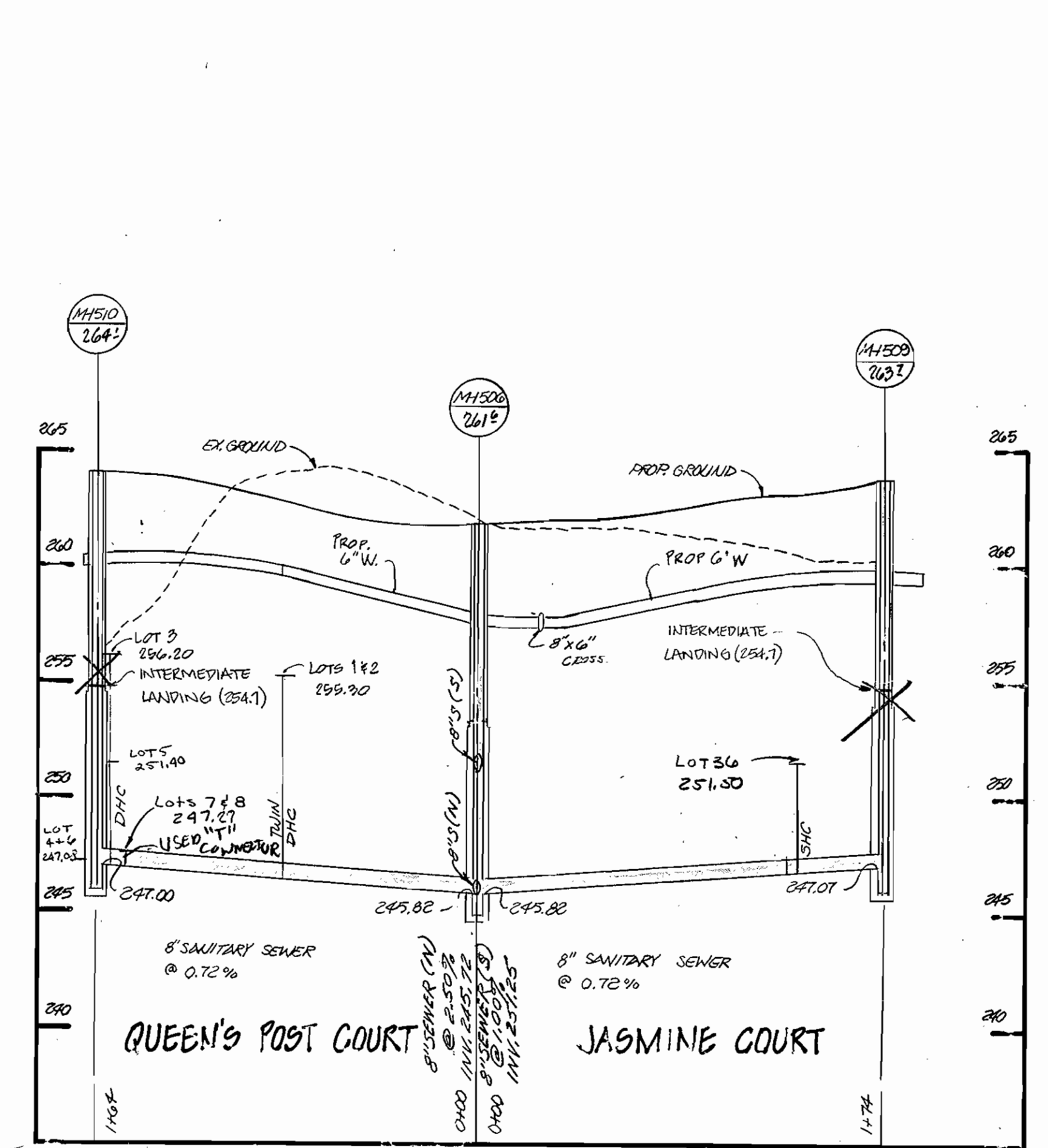
KING'S POST COURT

SCALE: HORIZ. 1"=50'  
VERT. 1"=5'



KING'S POST COURT

SCALE: HORIZ. 1"=50'  
VERT. 1"=5'



QUEEN'S POST COURT JASMINE COURT

SCALE: HORIZ. 1"=50'  
VERT. 1"=5'



DEPARTMENT OF PUBLIC WORKS  
James H. Lewis, Chief, Bureau of Engineering  
2-1-88

BOENDER ASSOCIATES, INC.  
ENGINEERS · PLANNERS · SURVEYORS  
3565 ELLICOTT MILLS DR.  
ELLICOTT CITY, MARYLAND 21043  
(301) 465-7777

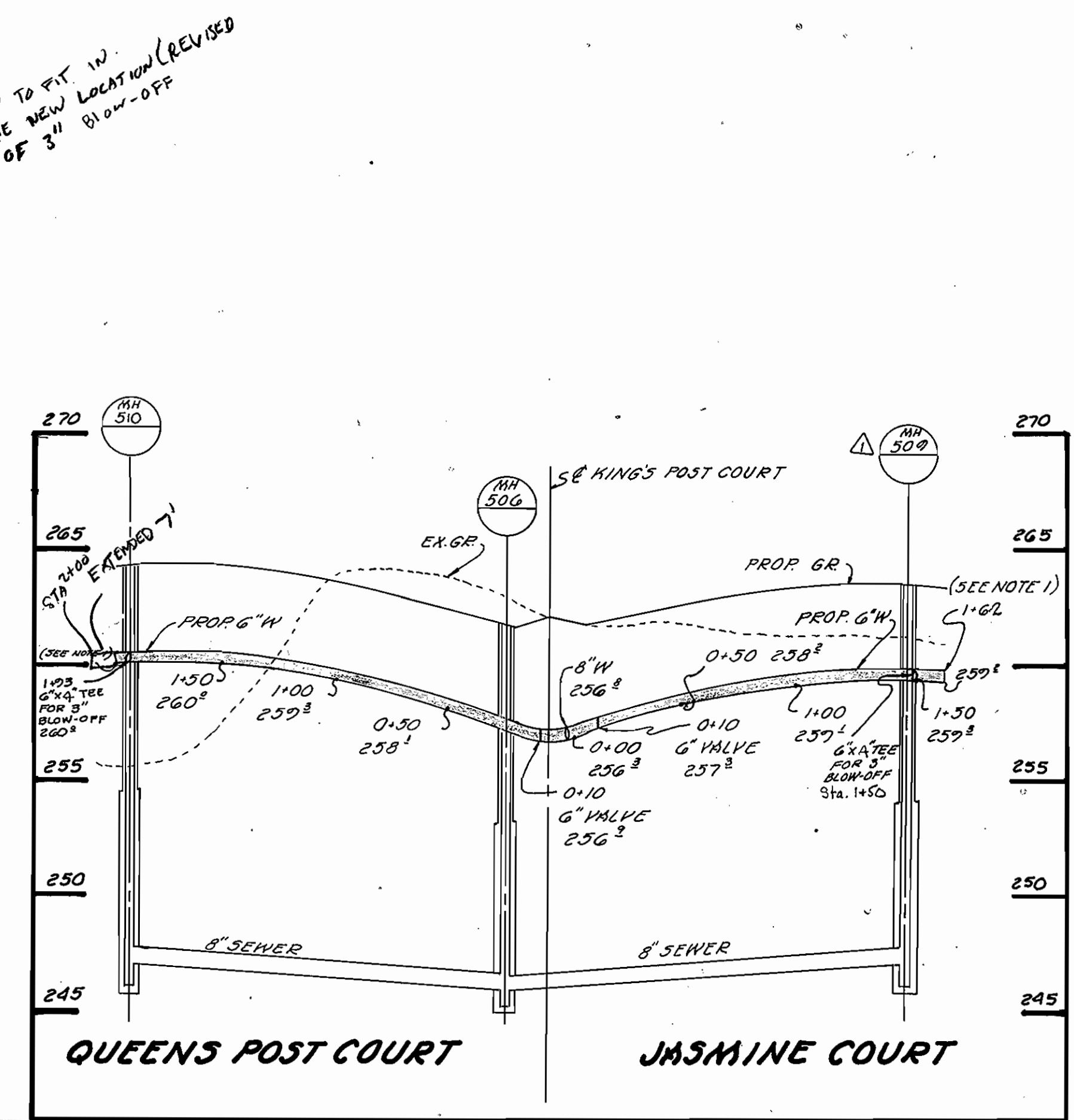
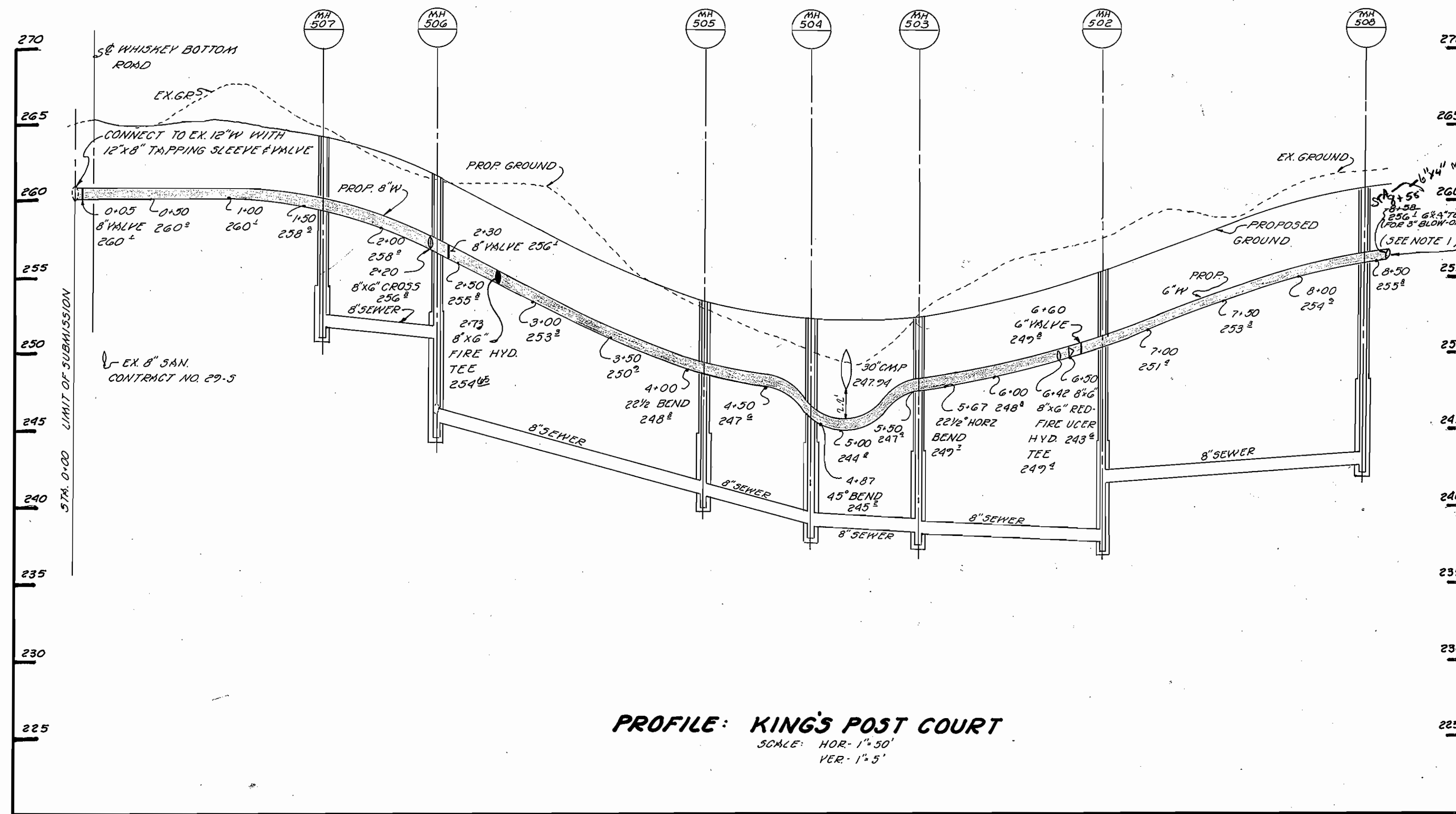
DES: U.T.M.			
DRN: U.C.O.			
CHK: J.L.D.	RELOCATE SEWER MAIN MH 499-MH 500	5/24/88	
DATE: JUNE/88	D.M.W. 1 REVISE DETAIL #5, INVERTS & ELEVATIONS	7/4/88	
BY NO.		REVISION	DATE

SANITARY SEWER PROFILES

STRATFORD DOWNS  
6TH ELECTION DISTRICT  
CONTRACT NO. 24-1658-D

SCALE AS SHOWN  
SHEET 3 OF 4

- NOTES:**
1. AT THE TERMINATION OF EACH 6" WATER MAIN, PROVIDE 6" CAP/PLUG & BUTTRESS.
  2. FOR SANITARY SEWER PROFILES SEE SHEET 3 OF 4.
  3. FOR WATER & SEWER PLAN SEE SHEET 2 OF 4.
  4. MINIMUM COVER OVER WATER LINES SHALL BE 3.5' UNLESS OTHERWISE NOTED.



ELEV  
 FOR WATER MAIN

DEPARTMENT OF PUBLIC WORKS DIRECTOR OF PUBLIC WORKS DATE: 2-1-88		BOENDER ASSOCIATES, INC. ENGINEERS PLANNERS SURVEYORS 3565' ELLICOTT MILLS DR. ELLICOTT CITY, MARYLAND 21043 (301) 465-7777		DES: JTN DRN: DAH CHK: JTD DATE:		RELOCATE FIRE HYDRANT REVISE MH# REVISION DATE:		<b>WATER PROFILES</b>		6 THELECTION DISTRICT CONTRACT NO. 24-1658-D		SCALE AS-NOTED SHEET 4 OF 4	
--	--	---	--	---	--	--	--	-----------------------	--	---	--	--------------------------------------	--

6-16-88 AS-BUILT