

SEDIMENT CONTROL MEASURES FOR THIS CONTRACT WILL BE IMPLEMENTED IN ACCORDANCE WITH SECTION 219 OF THE SPECIFICATIONS (SDP-87-124 & 60P-87-145)

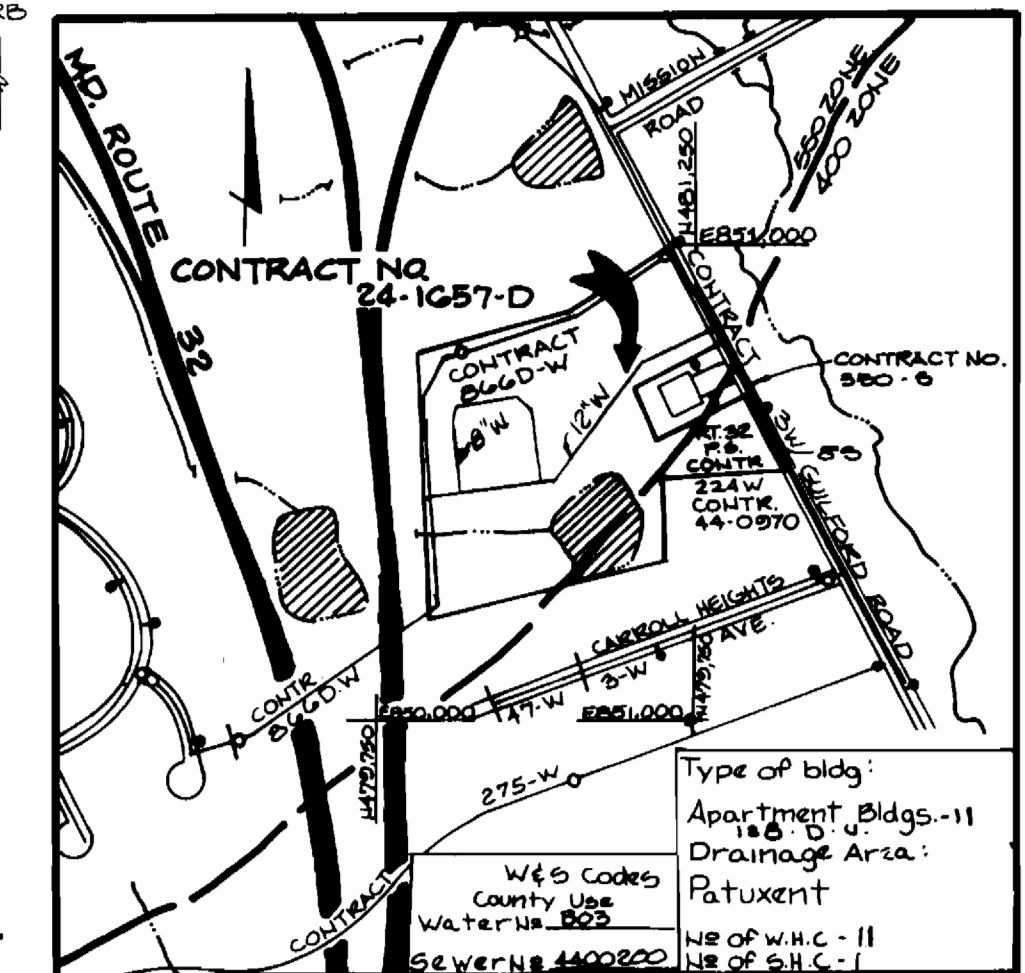
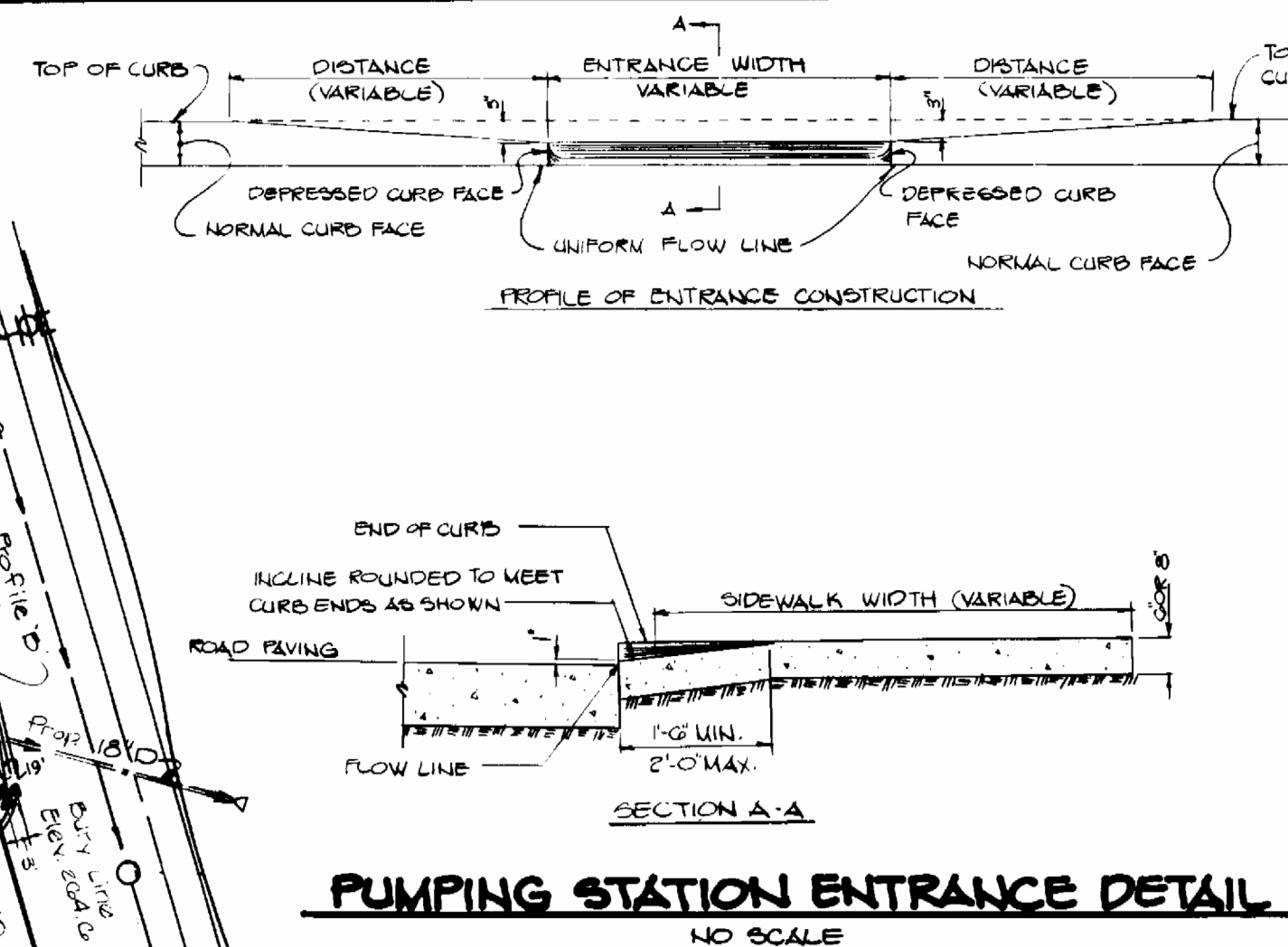
HOWARD SOIL CONSERVATION DISTRICT REVIEWED FOR HOWARD SOIL CONSERVATION DISTRICT AND MEETS TECHNICAL REQUIREMENTS.

James M. Nelson 6/7/88
 US SOIL CONSERVATION SERVICE DATE
 THIS PLAN IS APPROVED FOR SOIL EROSION AND SEDIMENT CONTROL BY THE HOWARD SOIL CONSERVATION DISTRICT
Stephen J. ... 6/7/88
 HOWARD SOIL CONSERVATION DISTRICT DATE

Sequence of Construction

1. Begin grading on the south side of the property without disturbing ground over the existing 12" water on the north side of the property.
2. After the grades are brought to subgrade level stabilize the disturbed area as per temporary seeding notes (under SDP-87-143), and install the 12" water as shown on the water contract drawing.
3. Abandon the existing 12" water that is along the north of the property.
4. Coordinate hydrant relocation and abandonment with the Bureau of Utilities (9/8/2000). Under the abandonment procedure, remove Tees, Valves and hydrants per return to the Bureau of Utilities. All new fittings shall be placed in line at their respective locations while the station is out of service.

GUILFORD NEIGHBORHOOD PARK
 PLAT NO. 3462
 EX. ZONING R-20



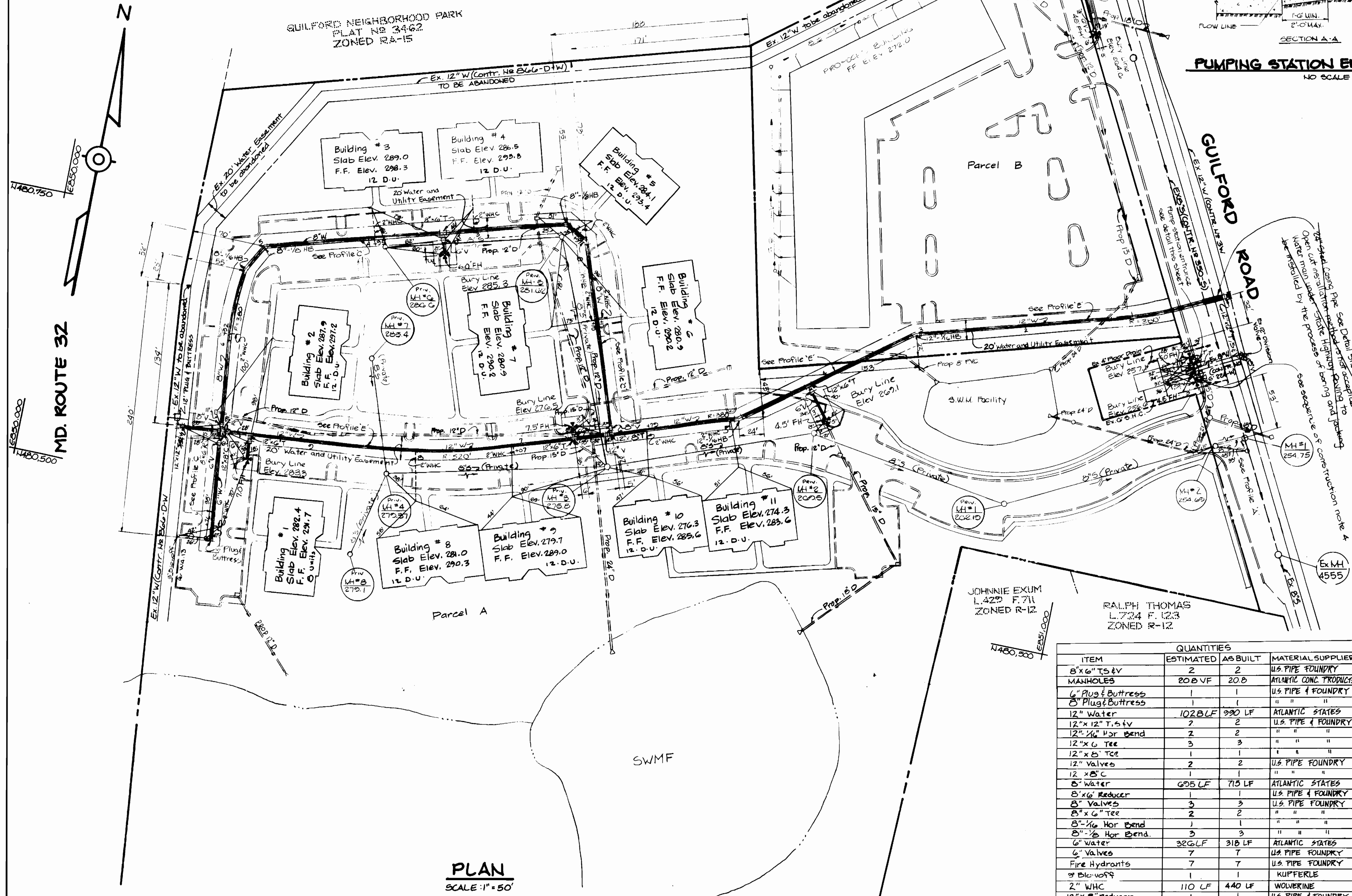
BENCH MARKS

- BM#1 Elev. 258.68
 Bonnet Nut On Fire Hydrant
 West Side of Guilford Road
 250' ± South of Mission Road
- BM#2 Elev. 251.17
 Railroad Spike In Pole # 164546
 West Side of Guilford Road
 1240' ± South of Mission Road

GENERAL NOTES

1. ALL PIPE FITTINGS SHALL BE IN ACCORDANCE WITH AWWA SPECIFICATION C-153 DUCTILE IRON COMPACT FITTINGS, 3" THROUGH 12" FOR WATER AND OTHER LIQUIDS.
2. APPROXIMATE LOCATION OF EXISTING MAINS ARE SHOWN. THE CONTRACTOR SHALL TAKE ALL NECESSARY PRECAUTIONS TO PROTECT EXISTING MAINS AND SERVICES AND MAINTAIN UNINTERRUPTED SUPPLY. ANY DAMAGE INCURRED SHALL BE REPAIRED IMMEDIATELY TO THE SATISFACTION OF THE ENGINEER AT THE CONTRACTOR'S EXPENSE.
3. ALL HORIZONTAL CONTROLS ARE BASED ON MARYLAND STATE COORDINATES.
4. ALL VERTICAL CONTROLS ARE BASED ON U.S.G.S. DATA.
5. ALL PIPE ELEVATIONS SHOWN ARE INVERT ELEVATIONS.
6. CLEAR ALL UTILITIES BY A MINIMUM OF 6".
7. FOR DETAILS NOT SHOWN ON THE DRAWINGS, AND FOR MATERIALS AND CONSTRUCTION METHODS, USE HOWARD COUNTY DESIGN MANUAL, VOLUME IV, STANDARD SPECIFICATIONS AND DETAILS FOR CONSTRUCTIONS. THE CONTRACTOR SHALL HAVE A COPY OF VOLUME IV ON THE JOB.
8. WHERE TEST PITS HAVE BEEN MADE ON EXISTING UTILITIES, THEY ARE NOTED BY THE SYMBOL AT THE LOCATION OF THE TEST PIT. A NOTE OR NOTES CONTAINING THE RESULTS OF THE TEST PIT OR PITS IS INCLUDED ON THE DRAWINGS. EXISTING UTILITIES IN THE VICINITY OF THE PROPOSED WORK FOR WHICH TEST PITS HAVE NOT BEEN DUG SHALL BE VERIFIED BY THE CONTRACTOR TO HIS OWN PERSONAL SATISFACTION. ANY DAMAGE TO EXISTING FACILITIES DUE TO THE CONTRACTOR'S NEGLIGENCE SHALL BE REPAIRED AT THE CONTRACTOR'S EXPENSE.
9. THE CONTRACTOR SHALL NOTIFY THE FOLLOWING UTILITIES OR AGENCIES AT LEAST FIVE WORKING DAYS BEFORE STARTING WORK SHOWN ON THESE PLANS:

STATE HIGHWAY ADMINISTRATION	531-5533
BALTIMORE GAS AND ELECTRIC CO. - CONTRACTOR SERVICES	850-4620
BALTIMORE GAS AND ELECTRIC CO. - UNDERGROUND DAMAGE CONTROL	859-9004
BALTIMORE GAS AND ELECTRIC CO. - TROUBLE SHOOTING	298-9001
MISS UTILITY	1-559-0100
COLONIAL PIPELINE	795-1390
BUREAU OF UTILITIES, HO. CO. DEPARTMENT OF PUBLIC WORKS	992-2386
C & P TELEPHONE CO.	1-800-257-7777
10. TREES AND SHRUBS ARE TO BE PROTECTED FROM DAMAGE TO MAXIMUM EXTENT. TREES AND SHRUBS LOCATED WITHIN THE CONSTRUCTION STRIP ARE NOT TO BE REMOVED OR DAMAGED BY THE CONTRACTOR.
11. THE CONTRACTOR SHALL REMOVE TREES, STUMPS AND ROOTS ALONG LINE OF EXCAVATION. PAYMENT FOR SUCH REMOVAL SHALL BE INCLUDED IN THE UNIT PRICE BID FOR CONSTRUCTION OF THE MAIN.
12. ALL WATER MAINS TO BE D.I.P. CLASS 52 UNLESS OTHERWISE NOTED.
13. TOPS OF ALL WATER MAINS TO HAVE A MINIMUM OF 3-1/2' COVER UNLESS OTHERWISE NOTED.
14. VALVES ADJACENT TO TEES SHALL BE STRAPPED TO TEES.
15. ALL FITTINGS SHALL BE BUTTRESSED OR ANCHORED WITH CONCRETE IN ACCORDANCE WITH THE STANDARD DETAILS UNLESS OTHERWISE PROVIDED FOR ON THE DRAWINGS.
16. FIRE HYDRANTS SHALL BE SET TO THE BURY LINE ELEVATION SHOWN ON THE DRAWINGS. ALL FIRE HYDRANTS SHALL BE STRAPPED AND BUTTRESSED WITH CONCRETE IN ACCORDANCE WITH THE STANDARD DETAILS. SOIL AROUND THE FIRE HYDRANT SHALL BE COMPACTED IN ACCORDANCE WITH SECTION 1003 OF THE STANDARD SPECIFICATIONS.
17. THE CONTRACTOR SHALL NOT OPERATE ANY WATER MAIN VALVES ON THE EXISTING WATER SYSTEM.
18. ALL WATER HOUSE CONNECTIONS SHALL BE FOR INSIDE METER SETTING, UNLESS OTHERWISE NOTED ON THE PLANS OR IN THE SPECIFICATIONS.



ITEM	QUANTITIES		MATERIAL SUPPLIER
	ESTIMATED	AS BUILT	
8"x6" T&V	2	2	U.S. PIPE FOUNDRY
MANHOLES	20 B.V.F.	20 B.	ATLANTIC CONC. PRODUCTS
6" Plug & Butress	1	1	U.S. PIPE & FOUNDRY
8" Plug & Butress	1	1	" " " "
12" Water	102 B.L.F.	990 L.F.	ATLANTIC STATES
12"x12" T, 6'v	7	2	U.S. PIPE & FOUNDRY
12"x1/2" Hor Bend	2	2	" " " "
12"x6 Tee	3	3	" " " "
12"x6 Tee	1	1	" " " "
12" Valves	2	2	U.S. PIPE FOUNDRY
12"x6" C	1	1	" " " "
8" Water	605 L.F.	715 L.F.	ATLANTIC STATES
8"x6 Reducer	1	1	U.S. PIPE & FOUNDRY
8" Valves	3	3	U.S. PIPE FOUNDRY
8"x6 Tee	2	2	" " " "
8"x1/2 Hor Bend	1	1	" " " "
8"x6 Hor Bend	3	3	" " " "
6" Water	32 G.L.F.	318 L.F.	ATLANTIC STATES
6" Valves	7	7	U.S. PIPE FOUNDRY
Fire Hydrants	7	7	U.S. PIPE FOUNDRY
9" Electric	1	1	KUPFERLE
2" W.H.C.	110 L.F.	440 L.F.	WOLVERINE
12"x6 Reducer	1	1	U.S. PIPE & FOUNDRY
8" Sewer	30 L.F.	95 L.F.	NATIONAL PIPE

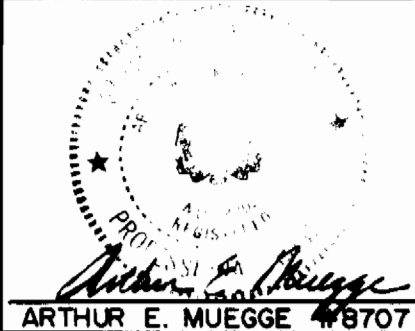
DEPARTMENT OF PUBLIC WORKS
 HOWARD COUNTY, MARYLAND

James M. Nelson 6-3-88
 DIRECTOR OF PUBLIC WORKS DATE

Arthur E. Muegge 6/1/88
 CHIEF, BUREAU OF UTILITIES DATE

Arthur E. Muegge 6/1/88
 CHIEF, LAND DEVELOPMENT DIVISION DATE

THE RIEMER GROUP, INC.
 3105 NORTH RIDGE ROAD
 ELLICOTT CITY, MARYLAND
 21043



DES: DAM			
DRN: DDB			
CHK:			
DATE: 3/24/87	BY NO.	REVISION	DATE

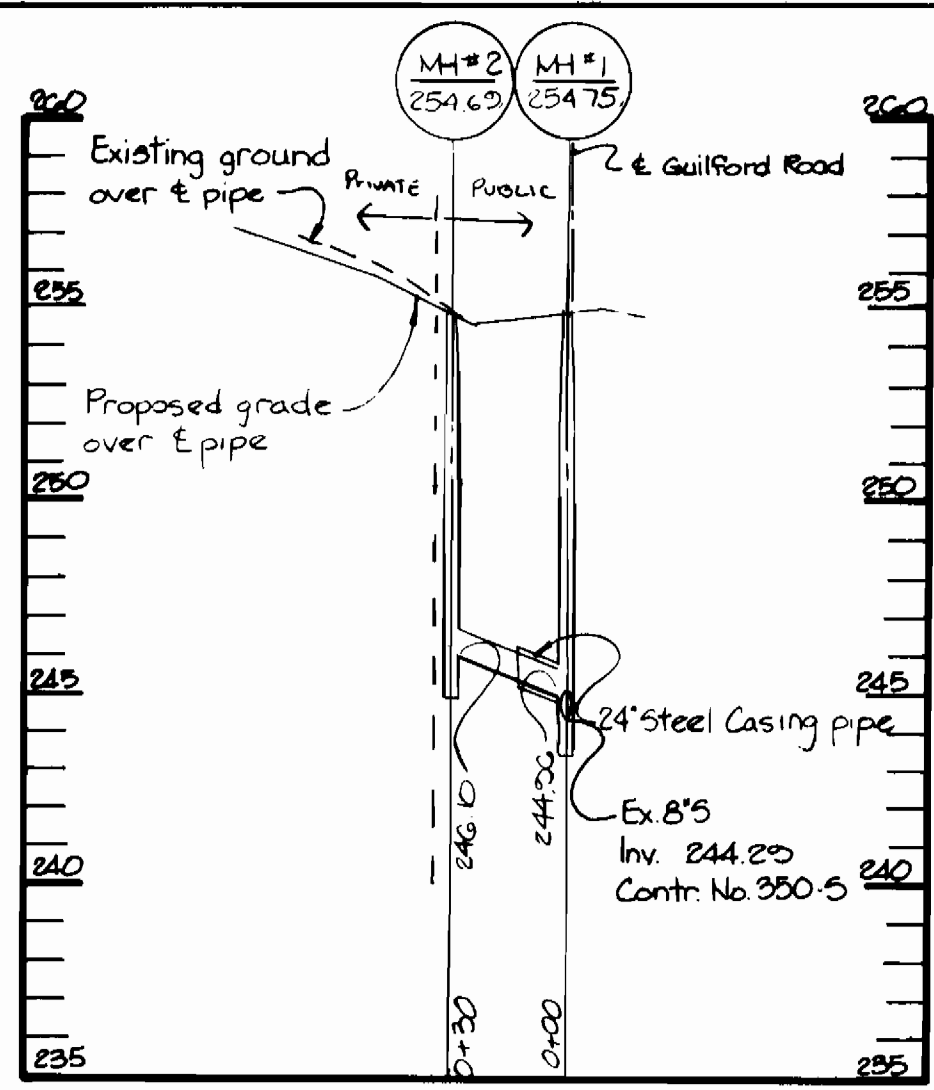
PLAN OF WATER AND SEWER MAINS

600' SCALE MAP NO. 42497 BLOCK NO.

NORTH GREENBRIER
 6TH ELECTION DISTRICT
 HOWARD COUNTY, MARYLAND
 CONTRACT NO. 24-1657-D

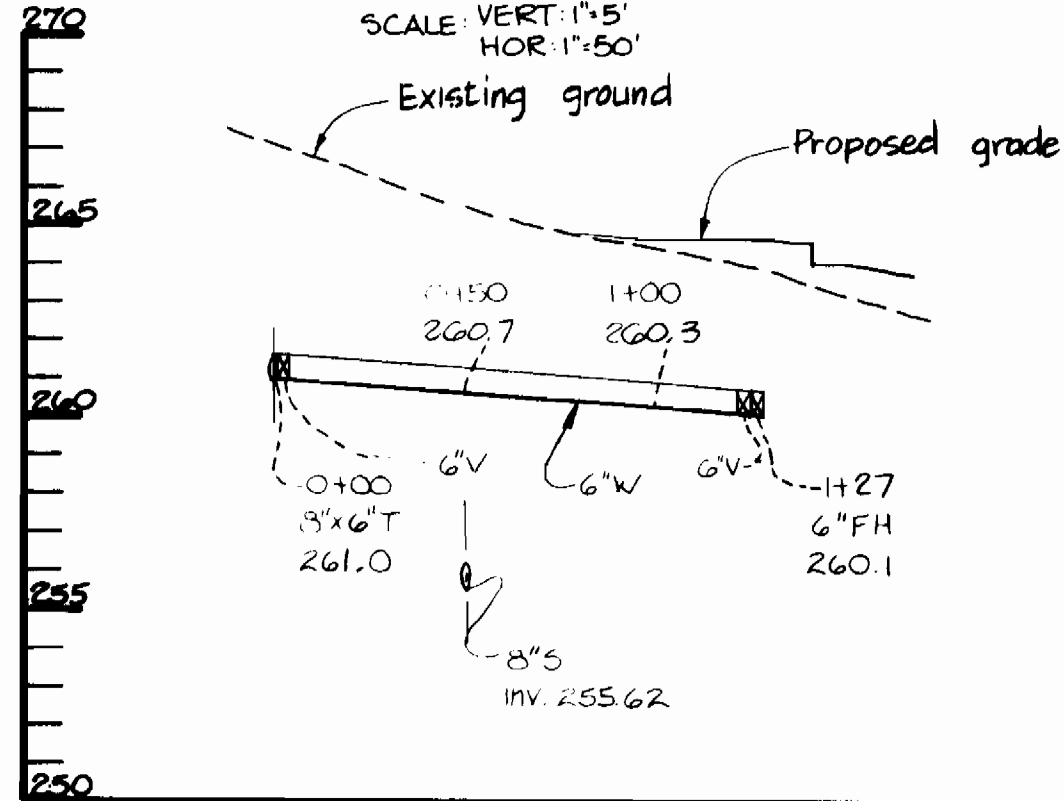
SCALE AS SHOWN

SHEET 1 OF 2



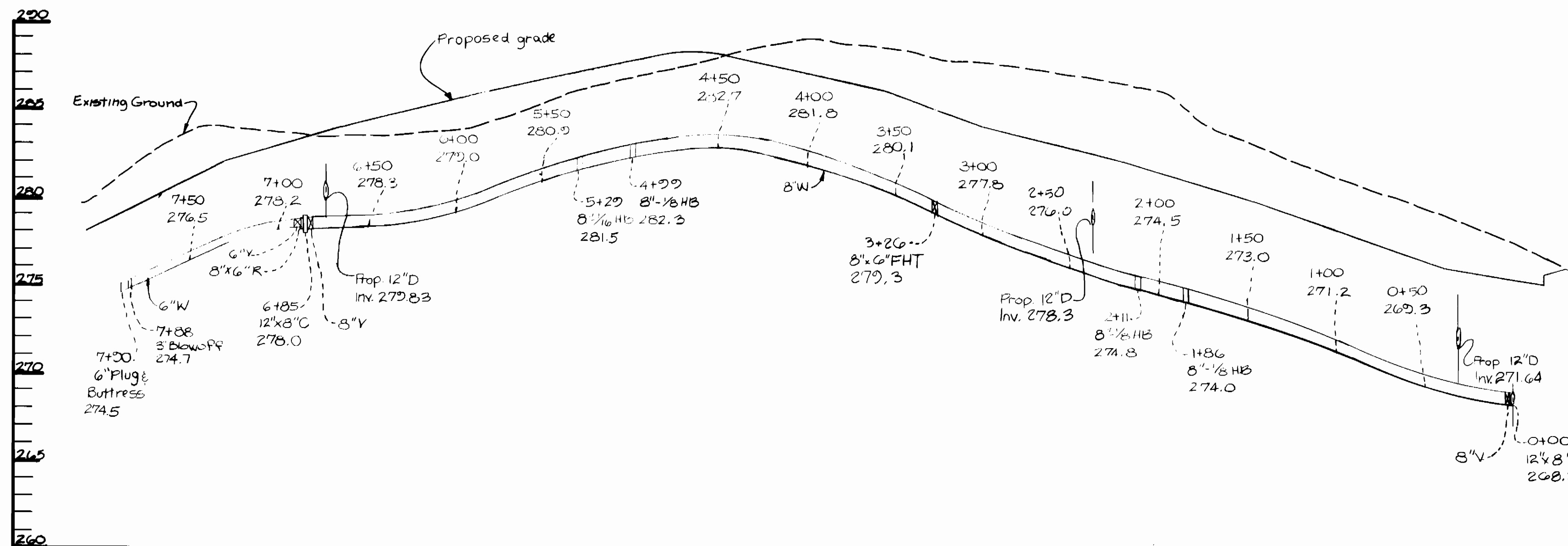
PROFILE 'A'

SCALE: VERT. 1"=5'
HOR. 1"=50'



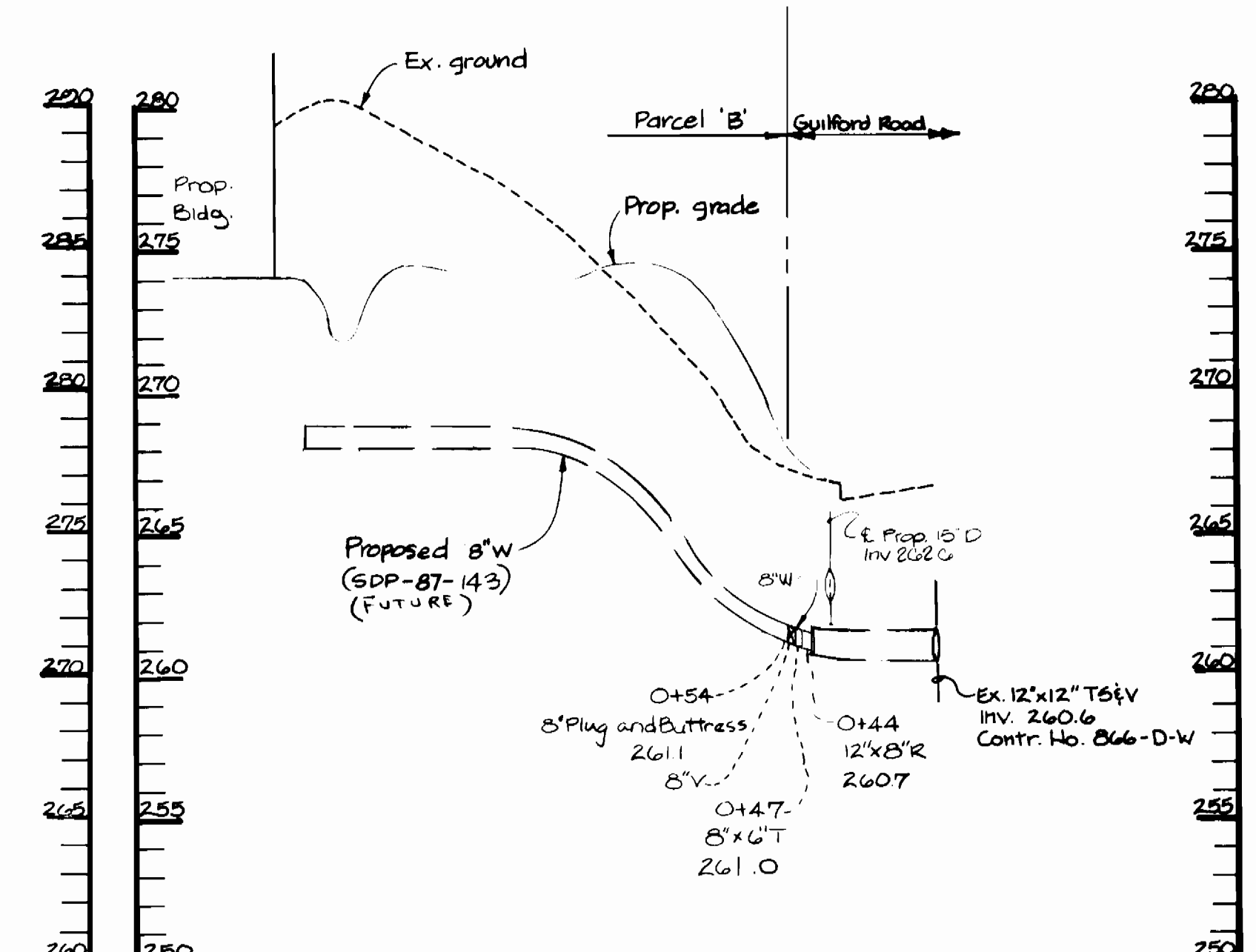
PROFILE 'B'

SCALE: VERT. 1"=5'
HOR. 1"=50'



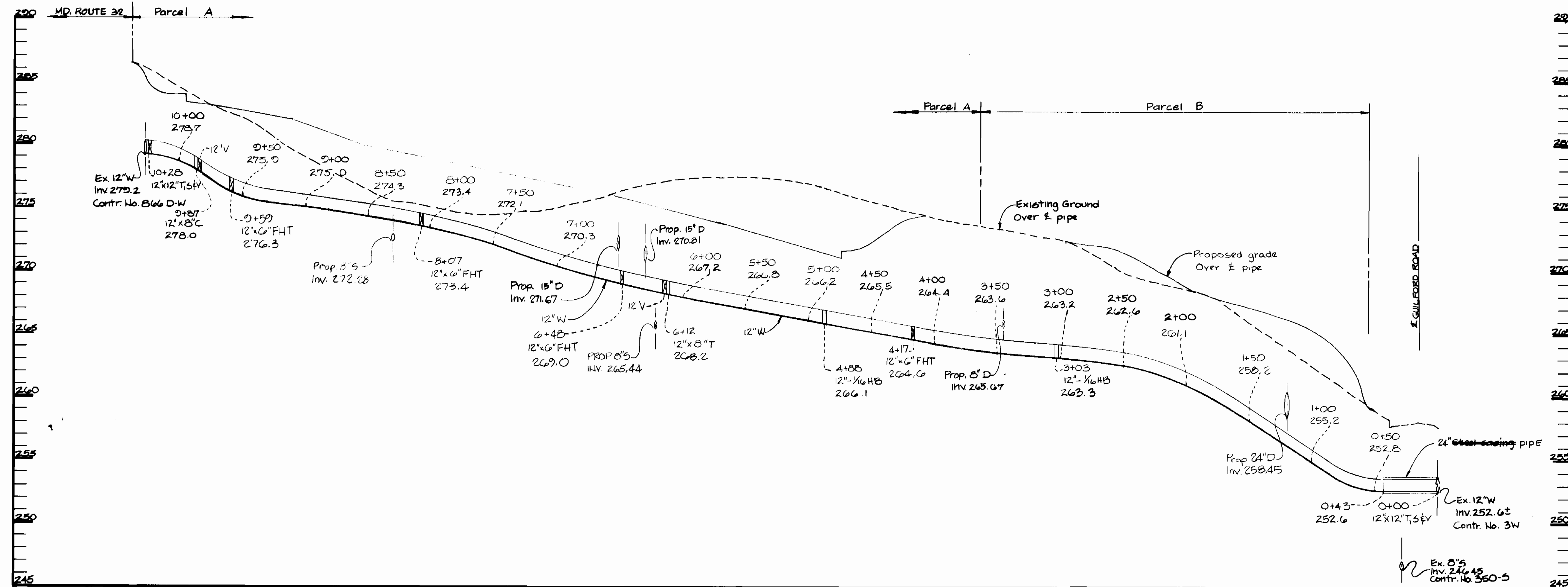
PROFILE 'C'

SCALE: VERT. 1"=5'
HOR. 1"=50'



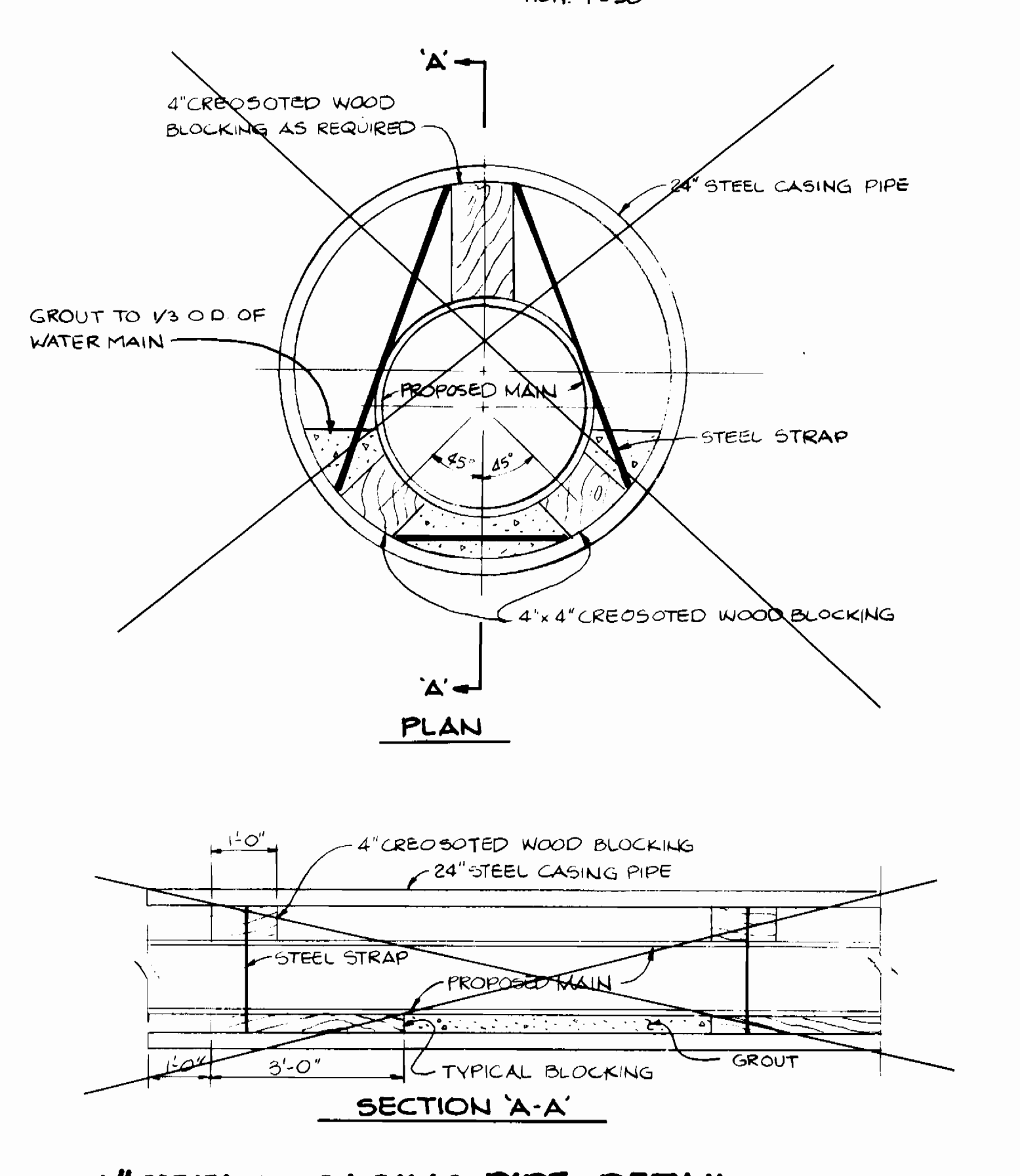
PROFILE 'D'

SCALE: VERT. 1"=5'
HOR. 1"=50'



PROFILE 'E'

SCALE: VERT. 1"=5'
HOR. 1"=50'



24" STEEL CASING PIPE DETAIL

NO SCALE

DEPARTMENT OF PUBLIC WORKS
HOWARD COUNTY, MARYLAND

THE RIEMER GROUP INC.
3105 NORTH RIDGE ROAD
ELLCOTT CITY, MARYLAND
21043



DES: DAM			
DRN: DDB			
CHK:			
DATE: 3/24/87	BY: NO.	REVISION	DATE

PROFILE OF WATER AND
SEWER MAINS

600' SCALE MAP NO. 42147 BLOCK NO.

NORTH GREENBRIER
6TH ELECTION DISTRICT
HOWARD COUNTY, MARYLAND
CONTRACT NO. 24-1657-D

SCALE
AS
SHOWN

SHEET
2 OF 2