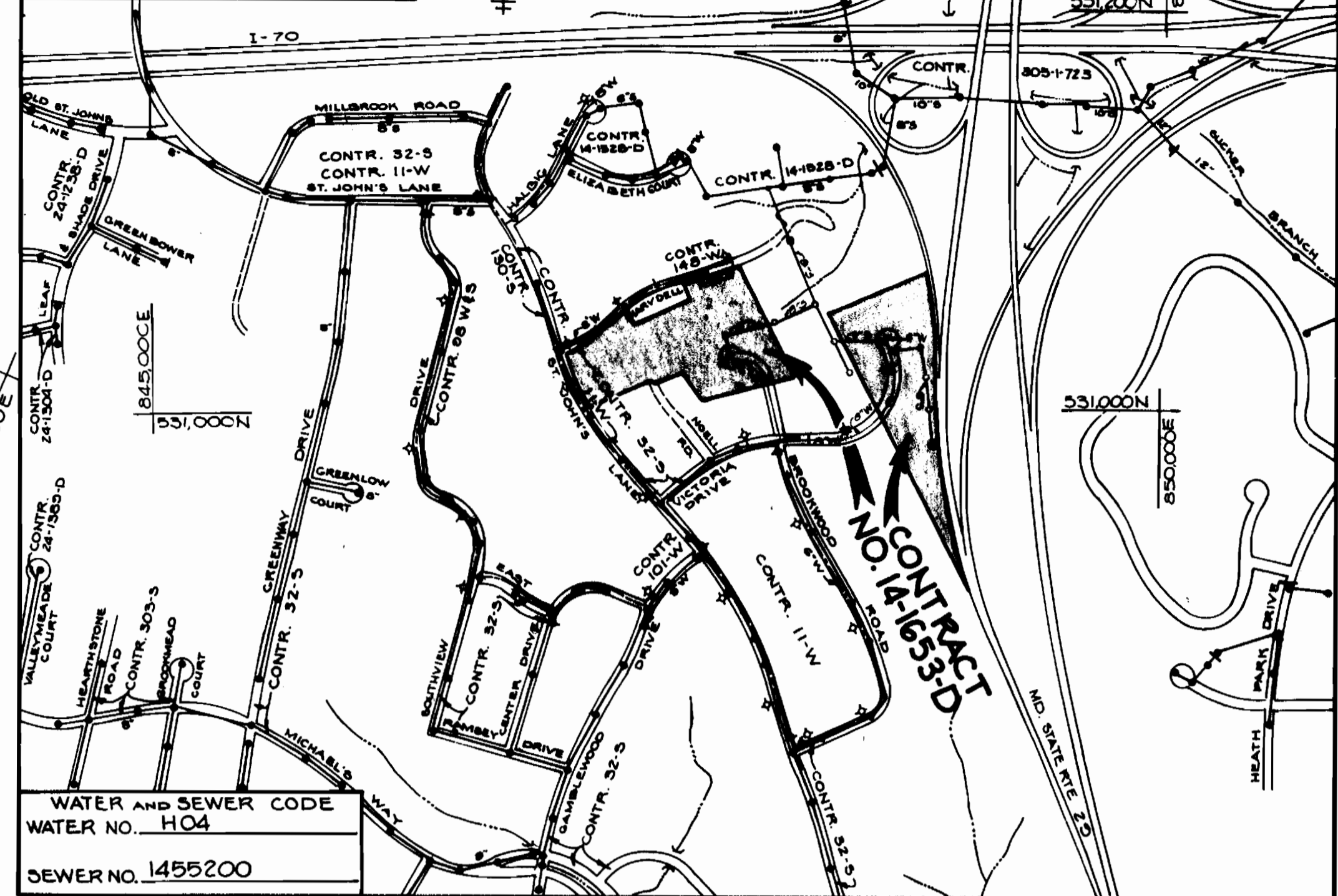


NUMBER OF LOTS	36
BUILDING TYPE	SFD
NUMBER OF WHC's	36
NUMBER OF SHC's	36
DRAINAGE AREA	PATAPOCO



WATER AND SEWER CODE
 WATER NO. HO4
 SEWER NO. 145200

VICINITY MAP
 SCALE 1" = 600'
 GENERAL NOTES

- APPROXIMATE LOCATION OF EXISTING MAINS ARE SHOWN. THE CONTRACTOR SHALL TAKE ALL NECESSARY PRECAUTIONS TO PROTECT EXISTING MAINS AND SERVICES AND MAINTAIN UNINTERRUPTED SUPPLY. ANY DAMAGE INCURRED SHALL BE REPAIRED IMMEDIATELY TO THE SATISFACTION OF THE ENGINEER AT THE CONTRACTOR'S EXPENSE.
- ALL VERTICAL CONTROLS ARE BASED ON MARYLAND STATE COORDINATES.
- ALL VERTICAL CONTROLS ARE BASED ON U.S.G.C. DATA.
- ALL PIPE ELEVATIONS SHOWN ARE INVERT ELEVATIONS.
- CLEAR ALL UTILITIES BY A MINIMUM OF 6". CLEAR ALL POLES BY 2'-0" MINIMUM OR TUNNEL AS REQUIRED. THE OWNER HAS CONTACTED THE UTILITY COMPANIES AND HAS MADE ARRANGEMENTS FOR BRACING OF POLES AS SHOWN ON THE DRAWINGS. IN THE EVENT THE CONTRACTOR'S WORK REQUIRES THE BRACING OF ADDITIONAL POLES, ANY COST INCURRED BY THE OWNER FOR THE BRACING OF ADDITIONAL POLES OR DAMAGES SHALL BE DEDUCTED FROM MONEY OWED THE CONTRACTOR. THE CONTRACTOR SHALL COORDINATE WITH THE UTILITY COMPANIES TO SCHEDULE THE BRACING OF THE POLES.
- FOR DETAILS NOT SHOWN ON THE DRAWINGS, AND FOR MATERIALS AND CONSTRUCTION METHODS, USE HOWARD COUNTY DESIGN MANUAL, VOLUME IV, STANDARD SPECIFICATIONS AND DETAILS FOR CONSTRUCTION. THE CONTRACTOR SHALL HAVE A COPY OF VOLUME IV ON THE JOB.
- WHERE TEST PITS HAVE BEEN MADE ON EXISTING UTILITIES, THEY ARE NOTED BY THE SYMBOL \square AT THE LOCATION OF THE TEST PIT. A NOTE OR NOTES CONTAINING THE RESULTS OF THE TEST PIT OR PITS IS INCLUDED ON THE DRAWINGS. EXISTING UTILITIES IN THE VICINITY OF THE PROPOSED WORK FOR WHICH TEST PITS HAVE NOT BEEN DUG SHALL BE LOCATED BY THE CONTRACTOR TWO WEEKS IN ADVANCE OF CONSTRUCTION OPERATIONS AT HIS OWN EXPENSE.
- CONTRACTOR SHALL NOTIFY THE FOLLOWING UTILITIES OR AGENCIES AT LEAST FIVE WORKING DAYS BEFORE STARTING WORK SHOWN ON THESE PLANS:
 - C&P - 1-800-257-7777
 - STATE HIGHWAY ADMINISTRATION - 531-5533
 - BALTIMORE GAS & ELECTRIC CO. CONTRACTOR SERVICES - 850-4620
 - BALTIMORE GAS & ELECTRIC CO. UNDER GROUND DAMAGE CONTROL - 859-9004
 - BALTIMORE GAS & ELECTRIC CO. TROUBLE SHOOTING - 798-9001
 - MISS UTILITY - 1-559-0100
 - COLONIAL PIPELINE CO. - 795-1390
 - BUREAU OF UTILITIES, HOWARD COUNTY DEPARTMENT OF PUBLIC WORKS - 992-2366
- TREES ARE TO BE PROTECTED FROM DAMAGE TO MAXIMUM EXTENT. TREES LOCATED WITHIN THE CONSTRUCTION STRIP ARE NOT TO BE REMOVED OR DAMAGED BY THE CONTRACTOR.
- CONTRACTOR SHALL REMOVE TREES, STUMPS AND ROOTS ALONG LINE OF EXCAVATION AS DIRECTED BY THE ENGINEER. PAYMENT FOR SUCH REMOVAL SHALL BE INCLUDED IN THE UNIT PRICE BID FOR EXCAVATION AND BACKFILL.
- PLACE REGULATION "MEN WORKING" AND WARNING SIGNS AS REQUIRED TO COMPLY WITH MARYLAND STATE HIGHWAY ADMINISTRATION MANUAL OF TRAFFIC CONTROL FOR HIGHWAY CONSTRUCTION AND MAINTENANCE OPERATIONS.
- ALL WATER MAINS TO BE D.I.P. UNLESS OTHERWISE NOTED.
- TOP OF ALL WATER MAINS TO HAVE A MINIMUM OF 3' COVER UNLESS OTHERWISE NOTED.
- VALVES ADJACENT TO TEES SHALL BE STRAPPED TO TEES.
- BLOCK ALL FITTINGS WITH CONCRETE.
- BURY LINE ELEVATIONS ON FIRE HYDRANTS SHALL BE SET TO THE ELEVATIONS SHOWN ON THE DRAWINGS. ALL FIRE HYDRANTS SHALL BE STRAPPED AND BUTTRESSED WITH CONCRETE IN ACCORDANCE WITH STANDARD DETAILS. SOIL AROUND THE FIRE HYDRANT TO BE COMPACTED IN ACCORDANCE WITH SECTIONS 1003 AND 1006 OF THE GENERAL REQUIREMENTS FOR WATER AND SEWER.
- ALL WATER HOUSE CONNECTIONS SHALL BE FOR AN INSIDE METER SETTING, EXCEPT LOTS 4, 8, 10, 20, 25, + 36 SHALL HAVE OUTSIDE METER SETTING.
- THE CONTRACTOR SHALL NOT OPERATE ANY WATER MAIN VALVES ON THE EXISTING SYSTEM.
- FOR ALL COPPER WATER HOUSE CONNECTIONS UTILIZE FLARED TYPE FITTINGS ONLY.
- THE SERVICE CLAMPS ARE TO HAVE STAINLESS STEEL STRAPS.
- ALL SEWER MAINS SHALL BE C.S.P.X., V.C.P.X., P.V.C. OR A.C.P. CLASS 2400 UNLESS OTHERWISE NOTED.
- ALL MANHOLES SHALL BE 4'-0" INSIDE DIAMETER UNLESS OTHERWISE NOTED.
- MANHOLES SHOWN WITH 12" AND 16" WALLS ARE BRICK MANHOLES ONLY.
- MANHOLES DESIGNATED W.T. IN PLAN AND PROFILE SHALL HAVE WATERTIGHT FRAME AND COVERS, STANDARD DETAIL 65.52 VOLUME 11: WHERE WATERTIGHT MANHOLE FRAME AND COVER IS USED, SET TOP OF FRAME 1'-6" ABOVE FINISHED GRADE.
- HOUSE(S) WITH THE SYMBOL "C.H.S." INDICATES THE CELLAR CANNOT BE SERVED.
- ALL WATER HOUSE CONNECTIONS SHALL HAVE A MINIMUM VERTICAL CLEARANCE OF 12" ABOVE ALL SANITARY SEWER CROSSINGS.
- ALL SANITARY SEWER HOUSE CONNECTIONS SHALL HAVE A MINIMUM VERTICAL CLEARANCE OF 12" BELOW ALL WATER MAIN CROSSINGS.
- PROFILE STATIONS SHALL BE ADJUSTED AS NECESSARY TO CONFORM TO PLAN DIMENSIONS.
- NO PIPE SHALL BE LAID UNTIL LINES OF EXCAVATION HAVE BEEN BROUGHT TO SUBGRADE.

ITEM	QUANTITY	AS-BUILT	SUPPLIER
3" Blowoffs	5	6	MEH Valve Co.
8" G Saddle	5	6	GPB
8" Sewer	2570 LF.	2652	Hammer
6" SHC	844 LF.	756	GPB
VF MH	152 VF.	14 m's	ATLANTIC Prod.
F.H.'s	3	3	WISH Valve Co.
8" W	811 LF.	834	Chilren Pipe Co.
6" W	908 LF.	937	"
G' V INCLUDING MANHOLES	4	4	MEH Valve Co.
1" WHC	405 LF.	353	Cambridge Lee
3/4" WHC	527 LF.	627	Cambridge Lee
meter vaults	6	6	2nd District Box

31. ALL D.I.P. FITTINGS SHALL BE IN ACCORDANCE WITH A.W.W.A. SPECIFICATION C-180 DUCTILE IRON COMPACT FITTINGS, 8" THROUGH 12" FOR WATER AND OTHER LIQUIDS.

HOWARD SOIL CONSERVATION DISTRICT:
 REVIEWED FOR HOWARD SOIL CONSERVATION DISTRICT
 AND MEETS TECHNICAL REQUIREMENTS.

James M. Helm 2-25-88
 U.S. SOIL CONSERVATION SERVICE DATE

THIS PLAN IS APPROVED FOR SOIL EROSION AND SEDIMENT CONTROL BY THE HOWARD SOIL CONSERVATION DISTRICT.

Stephen L. Rubin 7/25/87
 HOWARD SOIL CONSERVATION DISTRICT DATE

SEDIMENT CONTROL MEASURES FOR THIS CONTRACT WILL BE IMPLEMENTED IN ACCORDANCE WITH SECTION 219 OF THE HOWARD COUNTY STANDARD SPECIFICATIONS AND AS PER ROAD CONSTRUCTION PLANS #F-88-46

DEPARTMENT OF PUBLIC WORKS
 HOWARD COUNTY, MARYLAND

James J. ... 3/1/88 DATE
 DIRECTOR OF PUBLIC WORKS

William E. ... 3/1/88 DATE
 CHIEF BUREAU OF ENGINEERING

Robert M. ... 3-8-88 DATE
 CHIEF BUREAU OF UTILITIES

Joseph ... 3/1/88 DATE
 CHIEF LAND DEVELOPMENT DIVISION

TRACY, SCHULTE & ASSOCIATES INC.
 planning architecture engineering
 845 Baltimore National Pike Suite 418
 Ellicott City, Maryland 21043

STATE OF MARYLAND
 PROFESSIONAL ENGINEER

JLR
 SAB
 RJW
 RA
 DATE 9/87

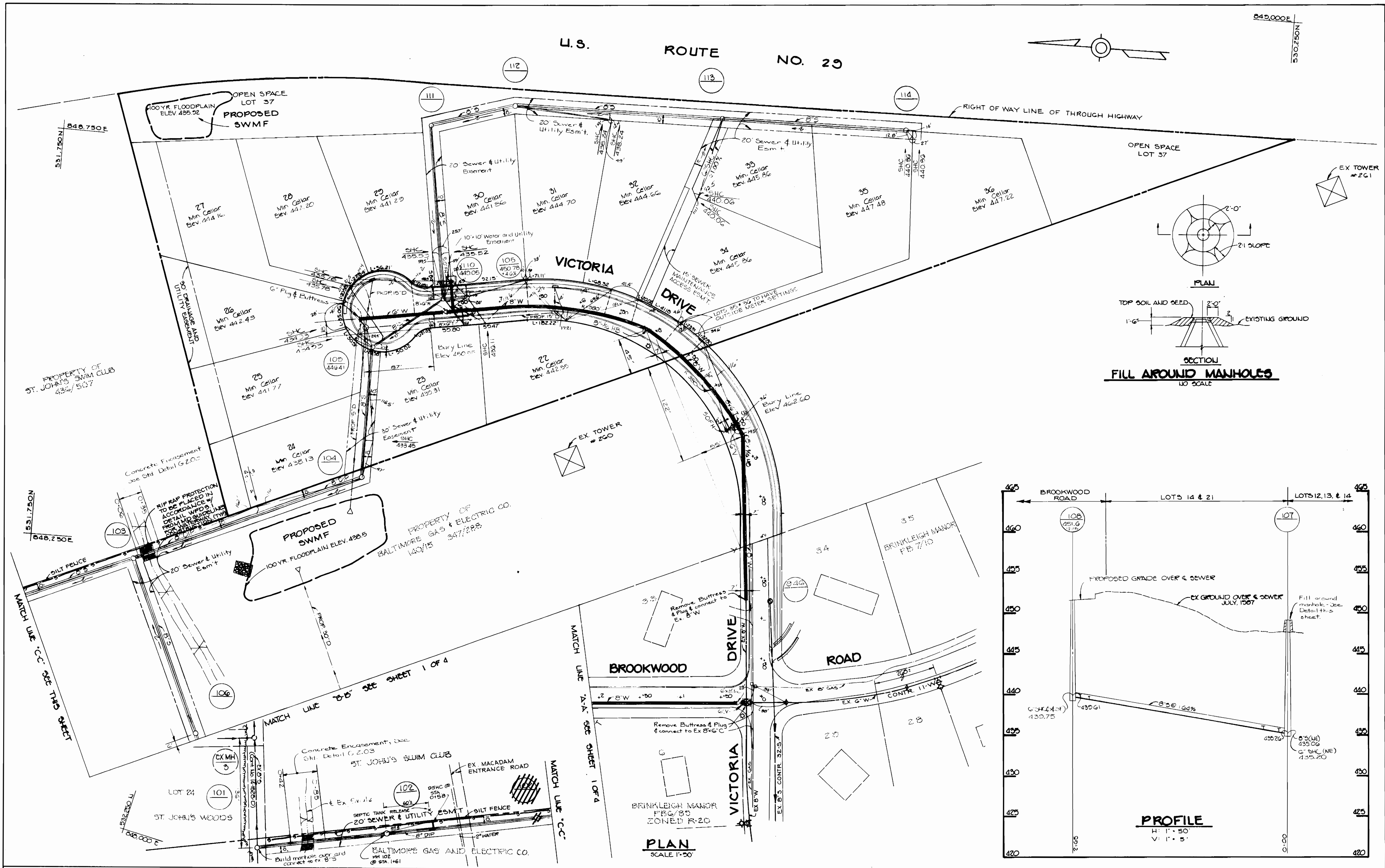
REVISED S&C LOCATION ON LOTS 31 & 40

PLAN OF
 WATER AND SEWER MAINS

17 16 & 17

BOONE MEADOWS
 SECTION I, AREA I
 ELECTION DISTRICT NO. 2
 CONTRACT NO. 14-1653-D

SCALE AS SHOWN
 SHEET 1 OF 4



DEPARTMENT OF PUBLIC WORKS
HOWARD COUNTY, MARYLAND

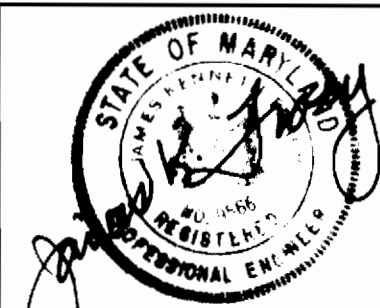
James J. ...
DIRECTOR OF PUBLIC WORKS
DATE 3/1/88

William S. Riley
CHIEF, BUREAU OF ENGINEERING
DATE 3-9-88

Robert ...
CHIEF, BUREAU OF UTILITIES
DATE 3-9-88

...
CHIEF, LAND DEVELOPMENT DIVISION
DATE

TRACY, SCHULTE
& ASSOCIATES INC.
planning architecture engineering
8480 Baltimore National Pike Suite 418
Elicott City, Maryland 21043



DES: JLR					
DRN: JA/SAB					
CHK: RJW					
DATE: 9/87	BY: NO.	REVISION	DATE	600' SCALE MAP NO. 17	BLOCK NO. 16 & 17

PLANS AND PROFILES OF
WATER AND SEWER MAINS

BOONE MEADOWS
SECTION I, AREA I
ELECTION DISTRICT NO. 2
CONTRACT NO. 14-1653-D

SCALE
AS
SHOWN

SHEET
2 OF 4

AS-BUILT 8-25-88

