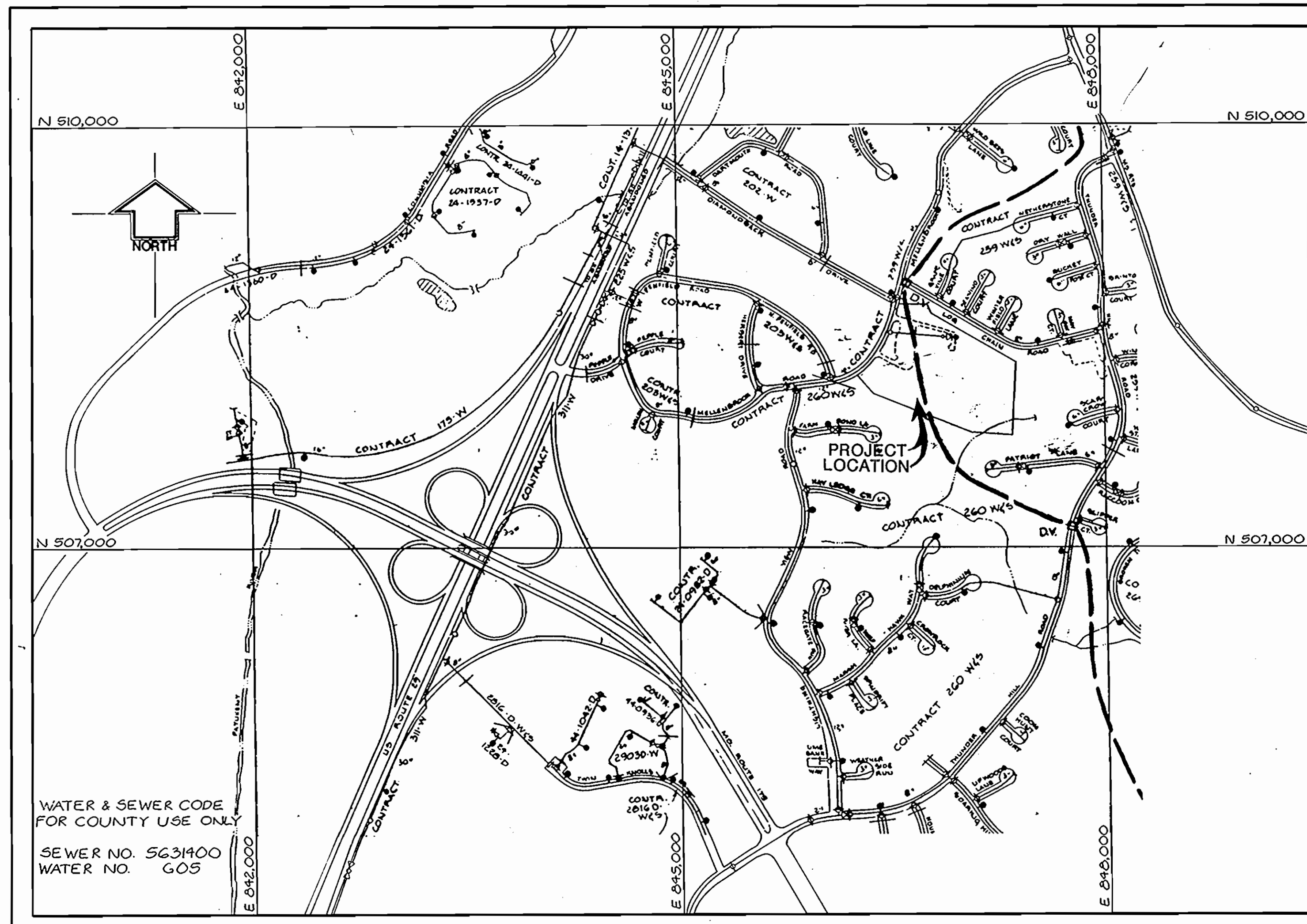


**GENERAL NOTES**

- APPROXIMATE LOCATION OF EXISTING MAINS ARE SHOWN. THE CONTRACTOR SHALL TAKE ALL NECESSARY PRECAUTIONS TO PROTECT EXISTING MAINS AND SERVICES AND MAINTAIN UNINTERRUPTED SUPPLY. ANY DAMAGE INCURRED SHALL BE REPAIRED IMMEDIATELY TO THE SATISFACTION OF THE ENGINEER AT THE CONTRACTOR'S EXPENSE.
- ALL HORIZONTAL CONTROLS ARE BASED ON MARYLAND STATE COORDINATES.
- ALL VERTICAL CONTROLS ARE BASED ON U.S.C.S. DATA.
- ALL PIPE ELEVATIONS SHOWN ARE INVERT ELEVATIONS.
- CLEAR ALL UTILITIES BY A MINIMUM OF 6".
- FOR DETAILS NOT SHOWN ON THE DRAWINGS, AND FOR MATERIALS AND CONSTRUCTION METHODS, USE HOWARD COUNTY DESIGN MANUAL, VOLUME IV, STANDARD SPECIFICATIONS AND DETAILS FOR CONSTRUCTION. THE CONTRACTOR SHALL HAVE A COPY OF VOLUME IV ON THE JOB.
- WHERE TEST PITS HAVE BEEN MADE ON EXISTING UTILITIES, THEY ARE NOTED BY THE SYMBOL AT THE LOCATION OF THE TEST PIT. A NOTE OR NOTES CONTAINING THE RESULTS OF THE TEST PIT OR PITS IS INCLUDED ON THE DRAWINGS. EXISTING UTILITIES IN THE VICINITY OF THE PROPOSED WORK FOR WHICH TEST PITS HAVE NOT BEEN DUG SHALL BE VERIFIED BY THE CONTRACTOR TO HIS OWN SATISFACTION. ANY DAMAGE TO EXISTING FACILITIES DUE TO THE CONTRACTOR'S NEGLIGENCE SHALL BE REPAIRED AT THE CONTRACTOR'S EXPENSE.
- CONTRACTOR SHALL NOTIFY THE FOLLOWING UTILITIES OR AGENCIES AT LEAST FIVE WORKING DAYS BEFORE STARTING WORK SHOWN ON THESE PLANS:
  - STATE HIGHWAY ADMINISTRATION - 531-5533
  - BALTIMORE GAS & ELECTRIC CO. - CONTRACTOR SERVICES 561-2585
  - BALTIMORE GAS & ELECTRIC CO. - UNDER GROUND DAMAGE CONTROL- 234-5621
  - BALTIMORE GAS & ELECTRIC CO. - TROUBLE SHOOTING - 298-9013
  - MISS UTILITY - 1-559-0100
  - COLONIAL PIPELINE CO. - 795-1390
  - BUREAU OF UTILITIES, HOWARD COUNTY DEPARTMENT OF PUBLIC WORKS - 992-2366
- TREES AND SHRUBS ARE TO BE PROTECTED FROM DAMAGE TO MAXIMUM EXTENT. TREES AND SHRUBS LOCATED WITHIN THE CONSTRUCTION STRIP ARE NOT TO BE REMOVED OR DAMAGED BY THE CONTRACTOR.
- CONTRACTOR SHALL REMOVE TREES, STUMPS AND ROOTS ALONG LINE OF EXCAVATION. PAYMENT FOR SUCH REMOVAL SHALL BE INCLUDED IN THE UNIT PRICE BID FOR CONSTRUCTION OF THE MAIN.
- ALL WATER MAINS TO BE D.I.P. CLASS 52 UNLESS OTHERWISE NOTED.
- TOPS OF ALL WATER MAINS TO HAVE A MINIMUM OF 3-1/2' COVER UNLESS OTHERWISE NOTED.
- VALVES ADJACENT TO TEES SHALL BE STRAPPED TO TEES.
- ALL FITTINGS SHALL BE BUTTRESSED OR ANCHORED WITH CONCRETE IN ACCORDANCE WITH THE STANDARD DETAILS UNLESS OTHERWISE PROVIDED FOR ON THE DRAWINGS.
- FIRE HYDRANTS SHALL BE SET TO THE BURY LINE ELEVATIONS SHOWN ON THE DRAWINGS. ALL FIRE HYDRANTS SHALL BE STRAPPED AND BUTTRESSED WITH CONCRETE IN ACCORDANCE WITH STANDARD DETAILS. SOIL AROUND THE FIRE HYDRANT SHALL BE COMPACTED IN ACCORDANCE WITH SECTION 1003 THE STANDARD SPECIFICATIONS.
- THE CONTRACTOR SHALL NOT OPERATE ANY WATER MAIN VALVES ON THE EXISTING WATER SYSTEM.
- ALL WATER HOUSE CONNECTIONS SHALL BE FOR INSIDE METER SETTING, UNLESS OTHERWISE NOTED ON THE PLANS OR IN THE SPECIFICATIONS.

QUANTITIES				
ITEM	EST'D.	AS-BUILT	MANUFACTURED BY	SUPPLIED BY:
8" WATER	904 LF	429 LF	ATLANTIC STATES	↑
6" WATER	90 LF	125 LF	ATLANTIC STATES	
FIRE HYDRANT	1 EA.	1 EA.	MUELLER CO.	AP WATER & SEWER SUPPLY INC.
8" VALVES	2 EA.	1 EA.	MUELLER CO.	
6" VALVES	2 EA.	2 EA.	MUELLER CO.	BOECK 10102 USE HWY.
8" REDUCER	1 EA.	1 EA.	UNION	
12" TAPPING SLEEVE	1 EA.	1 EA.	UNION	FAIRFAX VA. 22030
8" TEE	1 EA.	1 EA.	UNION	
8" 22 1/2" HB	1 EA.	1 EA.	UNION	↑
6" 90° HB	1 EA.	1 EA.	UNION	
6" 22 1/2" HB	1 EA.	1 EA.	UNION	↓
6" 45° HB	1 EA.	1 EA.	UNION	
8" 45° HB	4 EA.	4 EA.	UNION	



TYPE OF BUILDING: SCHOOL  
 NUMBER OF LOTS: 1  
 NO. OF WATER HOUSE CONNECTIONS: 2  
 NO. OF SEWER HOUSE CONNECTIONS: 0  
 DRAINAGE AREA: LITTLE PATUXENT

**VICINITY MAP**  
 SCALE: 1" = 600'

**CONTRACT NO. 44-1647-D**  
**VILLAGE OF OAKLAND MILLS**  
**SECTION 1 AREA 2**  
**WATER MAIN EXTENSIONS**

**HOWARD COUNTY, MARYLAND**  
**DEPARTMENT OF PUBLIC WORKS**

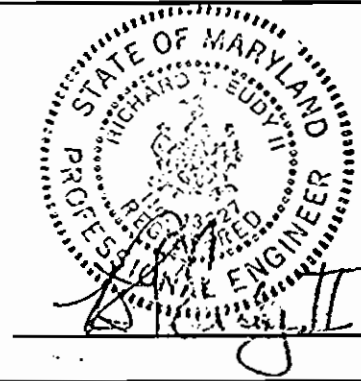
**SEDIMENT CONTROL NOTES:**

- SEDIMENT CONTROL MEASURES FOR THIS CONTRACT WILL BE IMPLEMENTED IN ACCORDANCE WITH APPLICABLE PROVISIONS OF THE HOWARD COUNTY DESIGN MANUAL, VOLUMES I THROUGH IV, IN CONFORMANCE WITH THE 1983 "MARYLAND STANDARDS AND SPECIFICATIONS FOR SOIL EROSION AND SEDIMENT CONTROL", AND AS SHOWN AND SPECIFIED ON THE SITE DEVELOPMENT PLAN SDP-87-92.
- REVIEWED FOR HOWARD COUNTY SOIL CONSERVATION DISTRICT AND MEETS TECHNICAL REQUIREMENTS.  
*J. Helms* 12/28/87  
 U.S. SOIL CONSERVATION SERVICE DATE
- THIS DEVELOPMENT PLAN IS APPROVED FOR SOIL EROSION AND SEDIMENT CONTROL BY THE HOWARD SOIL CONSERVATION DISTRICT.  
*Stephen L. Gulin* 12/28/87  
 HOWARD S.C.D. DATE

"AS BUILT"

**DEPARTMENT OF PUBLIC WORKS**  
**HOWARD COUNTY, MARYLAND**  
 DIRECTOR OF PUBLIC WORKS DATE  
 CHIEF, BUREAU OF UTILITIES DATE  
 CHIEF, LAND DEVELOPMENT DIVISION DATE

NO.	BY	REVISION	DATE
1	RRD	ADD DM# 2542000 LOCATION	4-23-87
2	RJT	HODPH	6-2-87
3	RRP	REVISED UNDERGROUND UTILITY LOCATION	10-18-87
4	HPH	PER BUREAU OF UTILITIES COMMENTS	10-27-87
5	CHZ	AS BUILT	5-4-88



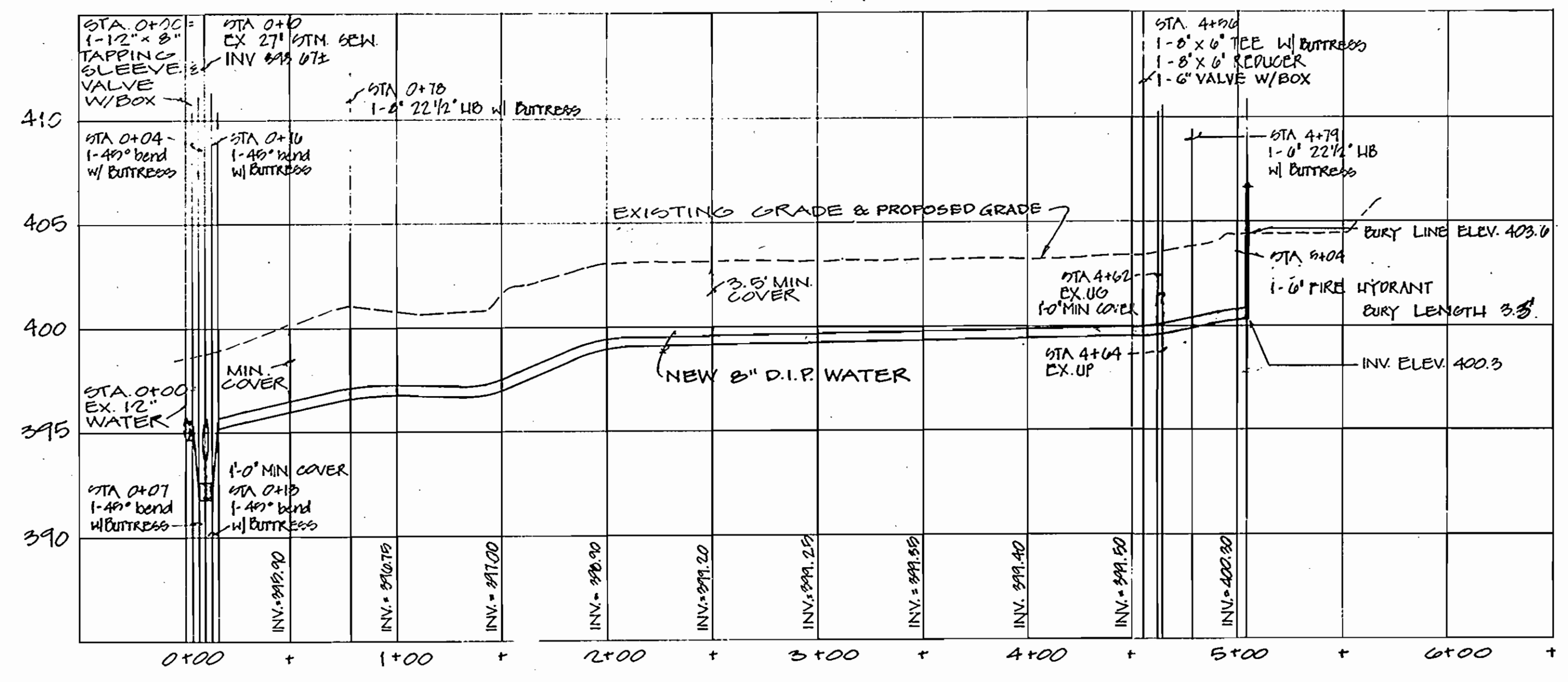
**CAD-CON INCORPORATED**  
 STRUCTURAL, MECHANICAL, ELECTRICAL, CIVIL ENGINEERS  
 3025 HANOVER COURT SUITE 201  
 FAIRFAX, VIRGINIA 22031  
 (703) 280-2555

**TITLE SHEET**  
 600 SCALE MAP NO. 30 BLOCK NO. \_\_\_\_\_

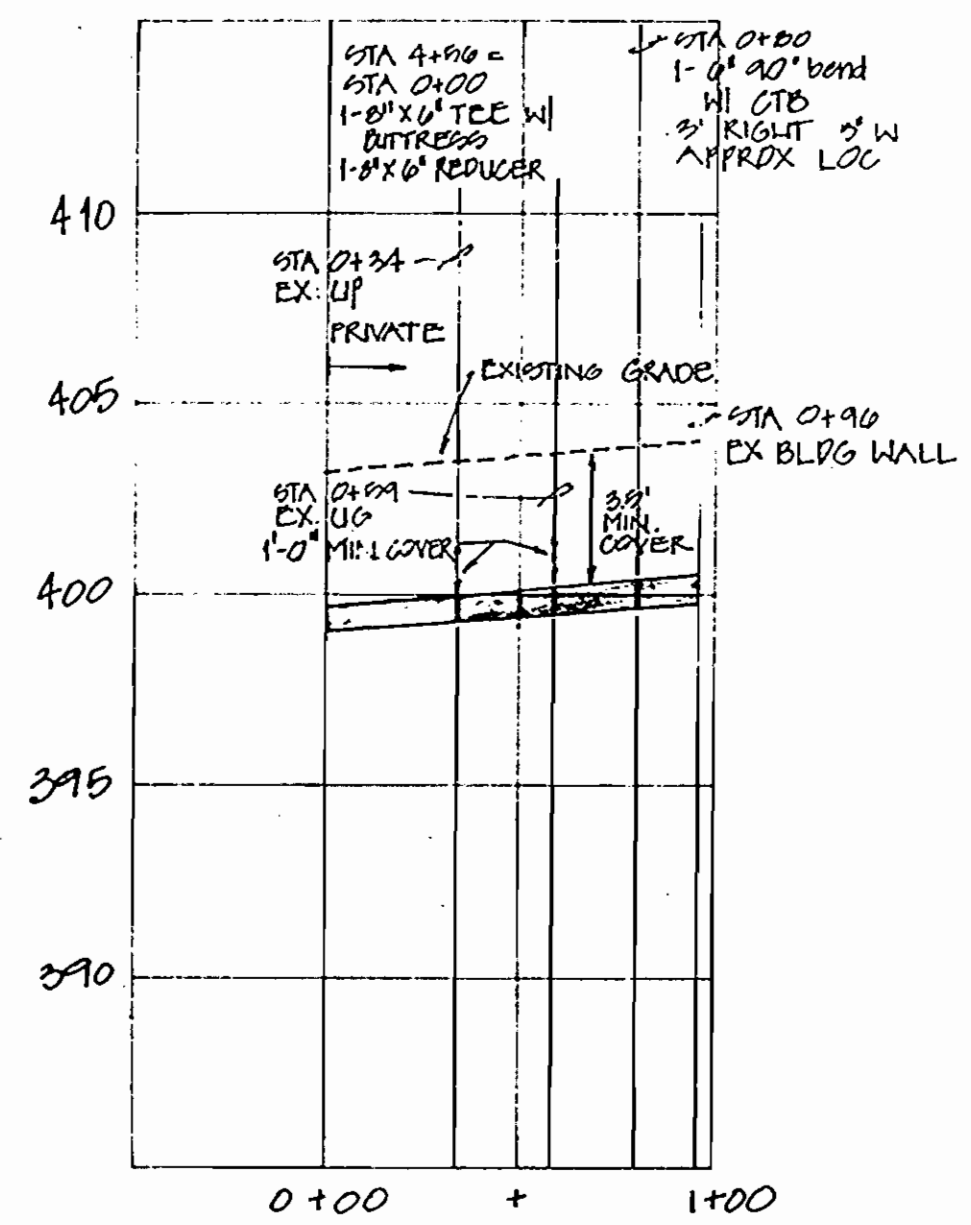
**THUNDER HILL ELEMENTARY SCHOOL**  
 VILLAGE OF OAKLAND MILLS SECTION 1 AREA 2  
 SIXTH ELECTION DISTRICT  
 HOWARD COUNTY, MARYLAND  
**CONTRACT NO. 44-1647-D, SDP-87-92**

DES: R.R.S.	SCALE: AS SHOWN
DRN: J.J.F.	SHEET
CHK: M.N.S.	1 OF 3
DATE: 4-23-87	

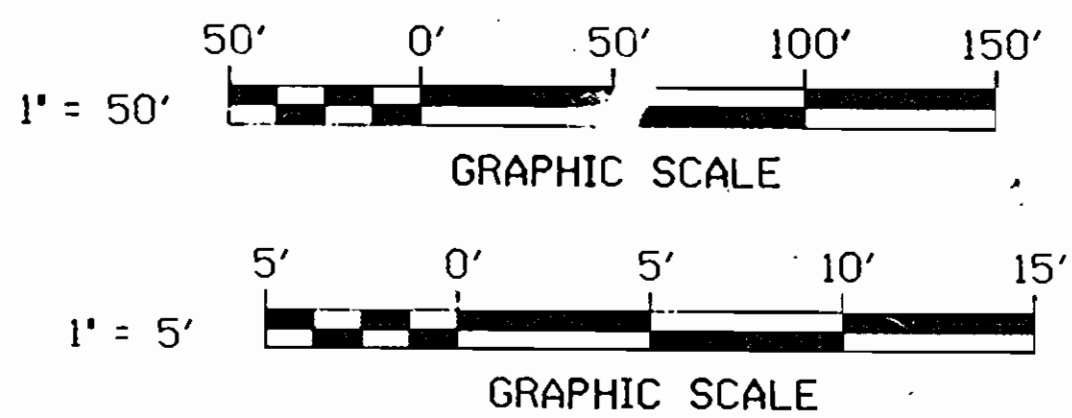
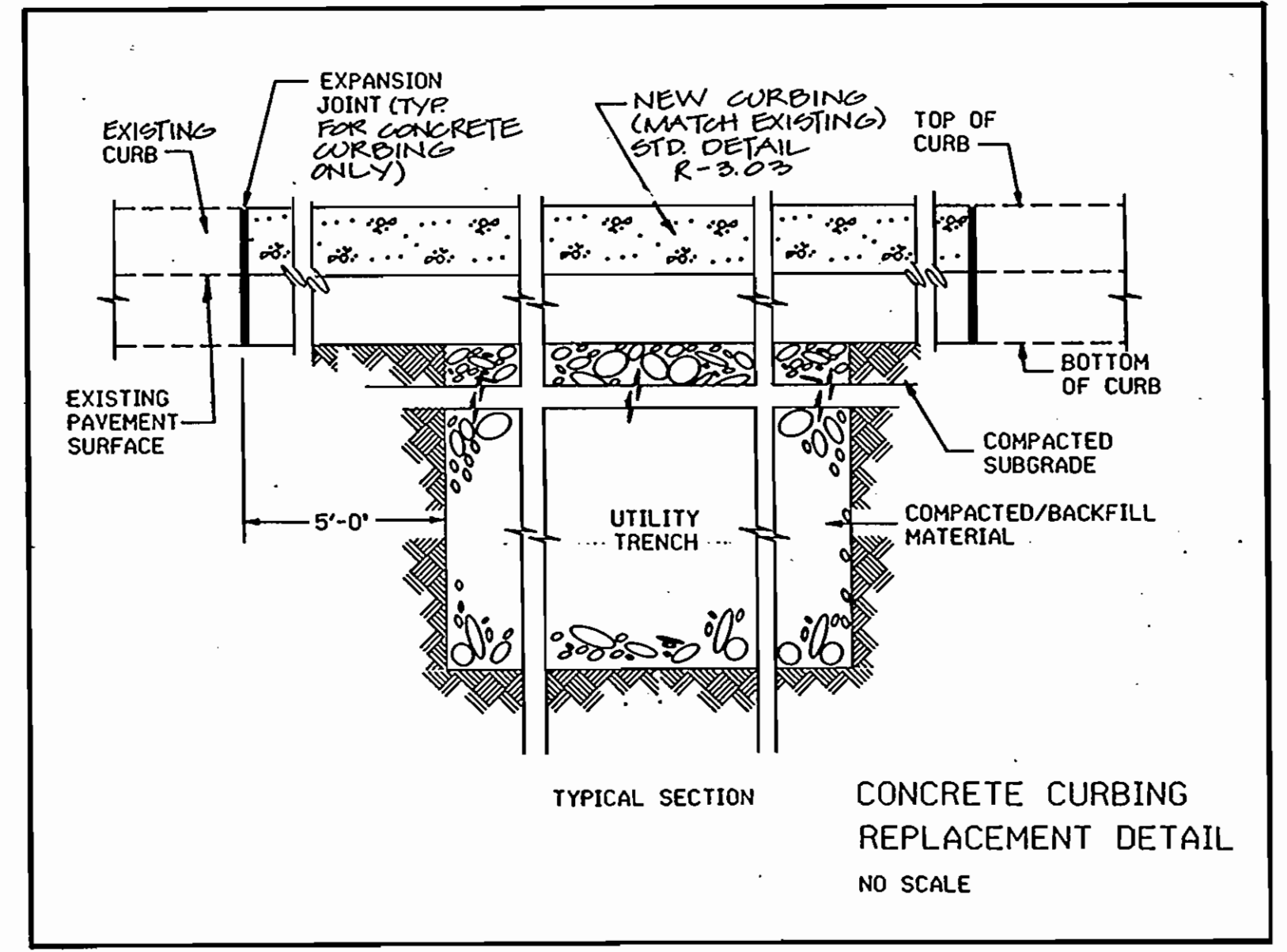
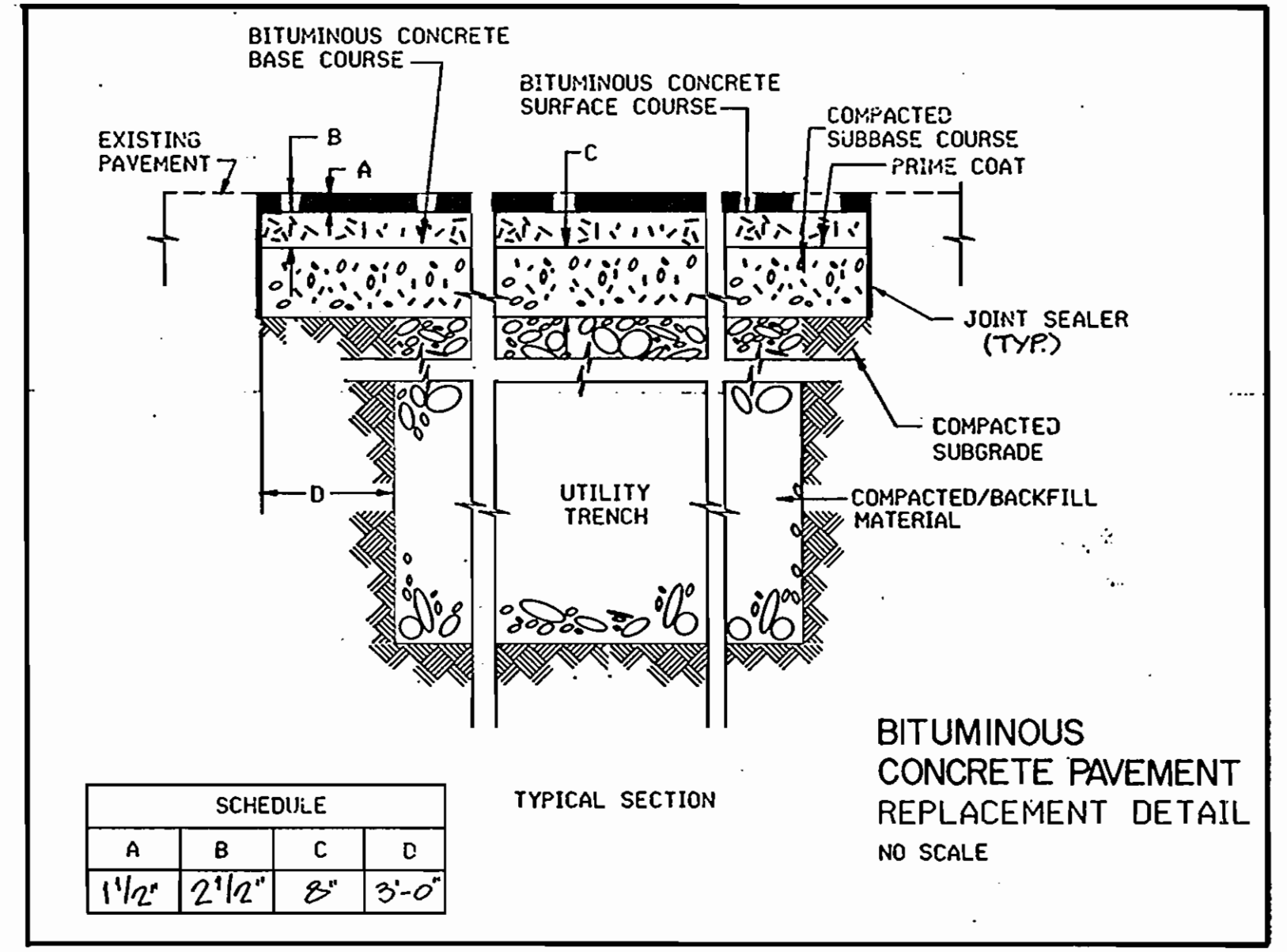




**WATERMAIN PROFILE**  
SCALE: HORIZ. = 1"=50'  
VERT. = 1"=5'



**PRIVATE WATERMAIN PROFILE**  
SCALE: HORIZ. = 1"=50'  
VERT. = 1"=5'



**DEPARTMENT OF PUBLIC WORKS**  
**HOWARD COUNTY, MARYLAND**

Director of Public Works: *[Signature]* DATE: 10-28-87  
 Chief, Bureau of Engineering: *[Signature]* DATE: *[Signature]*  
 Chief, Bureau of Utilities: *[Signature]* DATE: 10-28-87  
 Chief, Land Development Division: *[Signature]* DATE: *[Signature]*

NO.	BY	REVISION	DATE
1	RRD	ADD FH CURV LINE ELEV.	4-25-87
2	DWT	PER HCDPH	6-2-87
3	DRP	REMOVED UNDERGROUND UTILITY LOCATION	10-15-87
4	HPH	PER BUREAU OF UTILITIES COMMENTS	10-27-87



**CAD-CON INCORPORATED**  
STRUCTURAL, MECHANICAL, ELECTRICAL, CIVIL ENGINEERS  
3025 HANNAK COURT SUITE 201  
FAIRFAX, VIRGINIA 22031  
703/290-2365

**WATER MAIN**  
**EXTENSION PROFILE**

600 SCALE MAP NO. 30 BLOCK NO. \_\_\_\_\_

**THUNDER HILL**  
**ELEMENTARY SCHOOL**

VILLAGE OF OAKLAND MILLS SECTION I  
AREA 2  
SIXTH ELECTION DISTRICT

HOWARD COUNTY, MARYLAND

CONTRACT NO. 44-1647-D; SDP-87-92

DES: R.B.S. SCALE: AS SHOWN  
 DRN: J.J.F. SHEET  
 CHK: M.N.S. 3 OF 3  
 DATE: 4-22-87