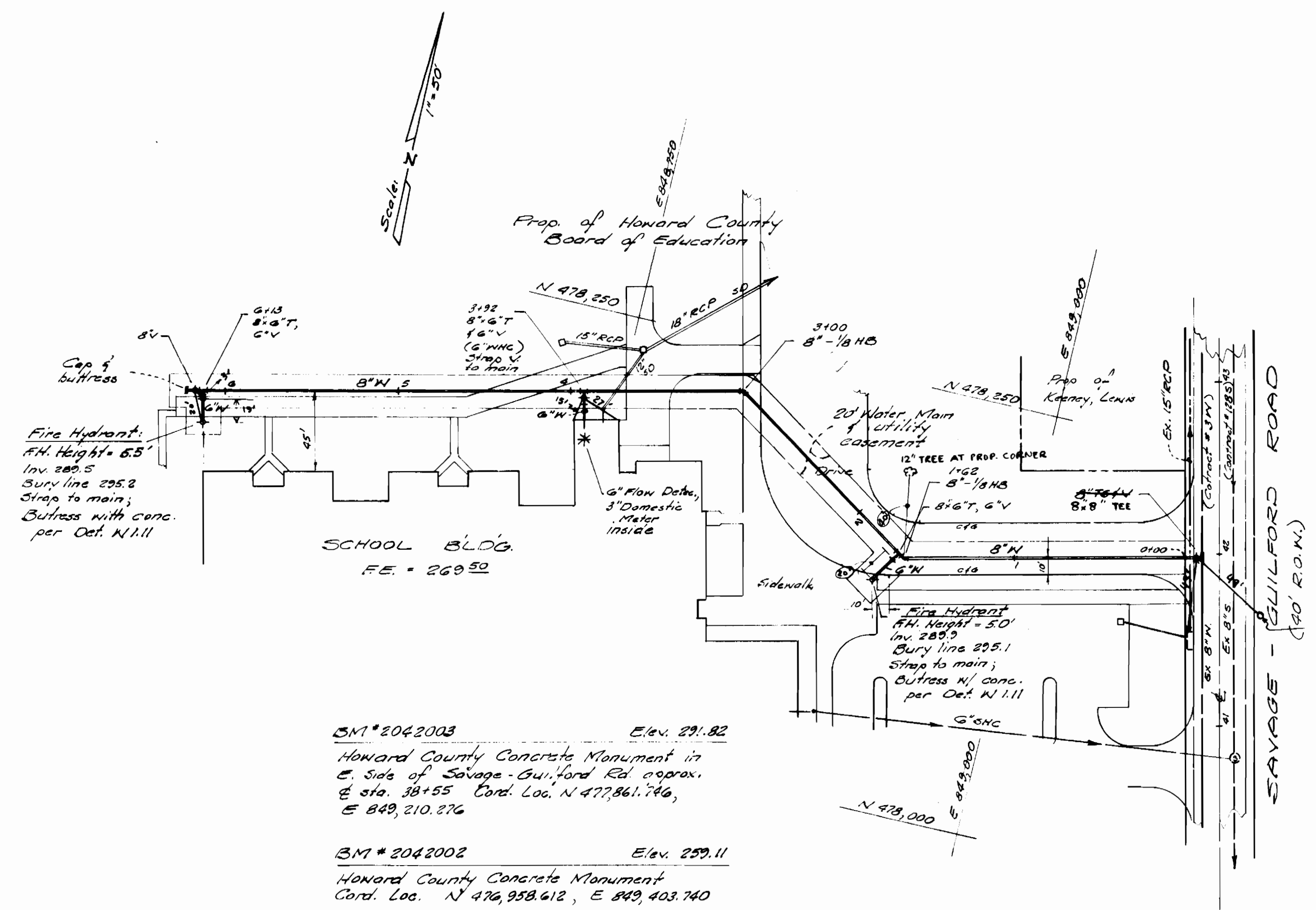
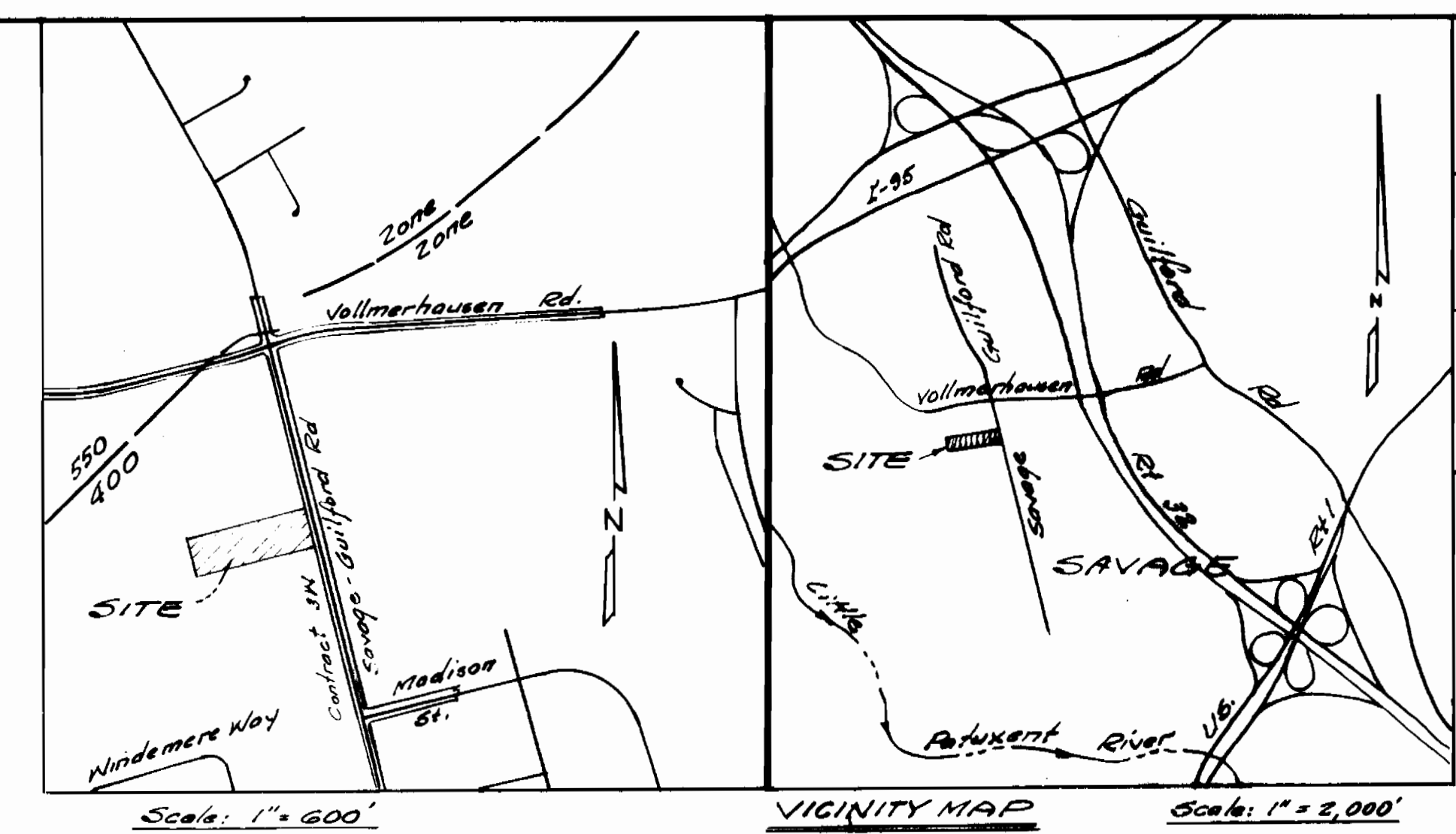


N. & S Codes  
 Water: C01  
 Sewer: S090700

Number of Lots 1  
 Bldg. Type School  
 Number of NHC's 1  
 Number of SMC's N/A  
 Drainage Area - Little Tributent



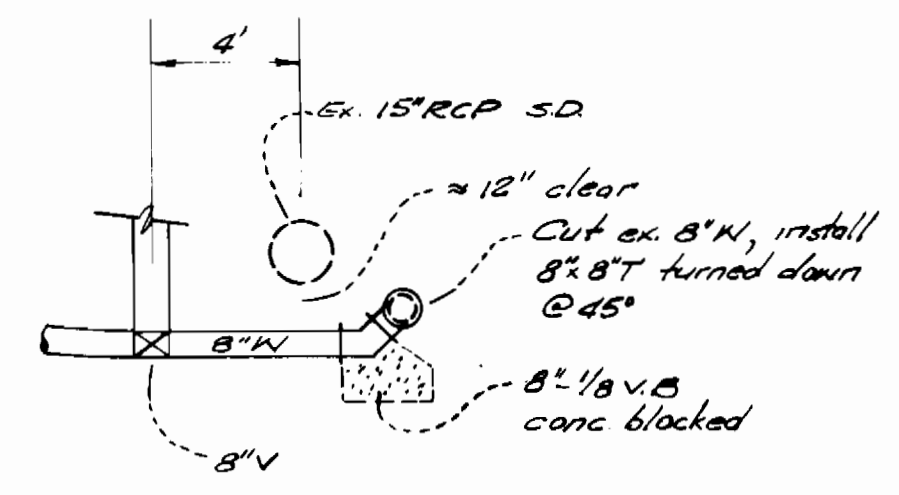
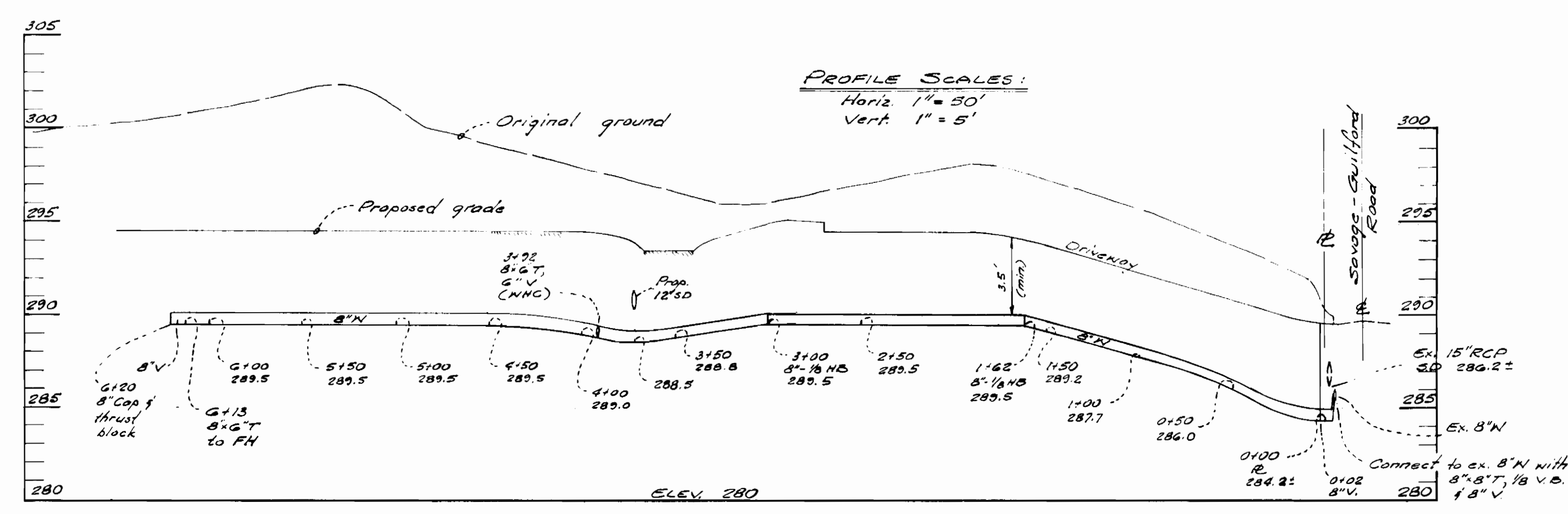
BM #2042003 Elev. 291.82  
 Howard County Concrete Monument in  
 E. Side of Savage-Guilford Rd approx.  
 E. Sta. 38+55 Cord. Loc. N 477,861.76,  
 E 849,210.276

BM #2042002 Elev. 289.11  
 Howard County Concrete Monument  
 Cord. Loc. N 476,958.612, E 849,403.740

Item	Quantity
8" x 8" Tee	1 ea. GRIFFIN
8" V	2 ea. US PIPE
6" V	3 ea. US PIPE
8" x 6" T	3 ea. GRIFFIN
8" 1/8" HB	2 ea. GRIFFIN
Fire Hydrants	2 ea. US PIPE
8" Cap	1 ea. GRIFFIN
8" 1/8" V.B.	1 ea.
8" N. main	630 Lf.
6" N. main	37 Lf. 41 L.F.

**GENERAL NOTES**

- Approximate location of existing mains are shown. The contractor shall take all necessary precautions to protect existing mains and services and maintain uninterrupted supply. Any damage incurred shall be repaired immediately to the satisfaction of the Engineer at the Contractor's expense.
- All horizontal controls are based on Maryland State Coordinates.
- All vertical controls are based on U.S.G.S. datum.
- All pipe elevations shown are invert elevations.
- Clear all utilities by a minimum of 6".
- For details not shown on the drawings, and for materials and construction methods, use Howard County Design Manual, Volume IX, Standard Specifications and Details for Construction. The Contractor shall have a copy of Volume IX on the job.
- Where test pits have been made on existing utilities, they are noted by the symbol of the location of the test pit. A note or notes containing the results of the test pit or pits is included on the drawings. Existing utilities in the vicinity of the proposed work for which test pits have not been dug shall be verified by the Contractor to his own satisfaction. Any damage to existing facilities due to the Contractor's negligence shall be repaired at the Contractor's expense.
- Contractor shall notify the following utilities or agencies at least five working days before starting work shown on these plans:  
 State Highway Administration - 331-5533  
 Baltimore Gas & Electric Co. - Contractor Services - 561-2585  
 Baltimore Gas & Electric Co. - Underground Damage Control - 234-5621  
 Baltimore Gas & Electric Co. - Trouble Shooting - 298-9013  
 AT&T Utility - 1-800-257-7777  
 Colonial Pipeline Co. - 795-1390  
 Bureau of Utilities, Howard County Dept. of Public Works - 992-2366  
 C/P Telephone Co - 725-9976  
 American Telephone & Telegraph - Cable location division 301-993-3553
- Trees are to be protected from damage to maximum extent. Trees located within the construction strip are not to be removed or damaged by the contractor.
- Contractor shall remove trees, stumps and roots along line of excavation as directed by the Engineer. Payment for such removal shall be included in the unit price bid for excavation and backfill for water main.
- Place regulation "Men Working" and warning signs as required to comply with Maryland State Highway Administration Manual of Traffic Control for Highway Construction and Maintenance Operations.
- All water mains to be D.I.P. Class 52 unless otherwise noted.
- Tops of all water mains to have a minimum of 3 1/2' cover unless otherwise noted.
- Valves adjacent to tees shall be strapped to tees.
- All fittings shall be buttressed or anchored with concrete in accordance with the standard Details unless otherwise provided for on the drawings.
- Fire hydrants shall be set to the bury line elevations shown on the drops. All fire hydrants shall be strapped and buttressed with concrete in accordance with Standard Details. Soil around the fire hydrant shall be compacted in accordance with Sections 1003 & 1008 of the Std. Specifications.
- The Contractor shall not operate any water main valves on the existing water system.
- Water house connection shall be for inside meter setting.
- Profile stations shall be adjusted as necessary to conform to Plan dimensions.



Howard Soil Conservation District  
 Reviewed for Howard Soil Conservation District and  
 meets technical requirements.  
 4-22-87  
 Date

This plan is approved for soil erosion and sediment  
 control by the Howard Soil Conservation District.  
 4/22/87  
 Date

Sediment control measures for this contract  
 will be implemented in accordance with  
 Section 219 of the Specifications and as  
 shown on this plan and as shown on  
 SDP-87-96

Owner - Developer:  
 Howard County Board of Educ.  
 10910 Rt 108  
 Ellicott City, Md. 21043  
 301-992-0500

DEPARTMENT OF PUBLIC WORKS  
 HOWARD COUNTY, MARYLAND

5-6-87  
 DATE

5-5-87  
 DATE

4-20-87  
 DATE

WATER MAIN EXTENSION  
 TO SERVE  
 SOUTHEASTERN ELEMENTARY SCHOOL  
 PARCEL 25 TAX MAP 47  
 SIXTH ELECTION DISTRICT

PLAN AND PROFILE OF A WATER MAIN  
 CONTRACT NO. 24-1667-D

REVISIONS

3/10/88 Conn. to ex. 8" N 1+22 to 3+50

PENKIUNAS & ASSOCIATES  
 Engineers  
 8855 ANNAPOLIS RD.  
 LANHAM, MD. 20706  
 301-577-5053

DATE: Feb. 10, 1987  
 SCALE: As Shown  
 JOB NO. BG19

DRAWING  
 OF 1