

Drainage Area: Little Patuxent
 Type of Buildings: Office/Warehouse
 No. S.W.C. - 3 No. of Trees - 3
 No. W.H.C. - 3
 WATER & SEWER CODE -
 Water: E 06
 Sewer: 3390000

LOCATION MAP
 SCALE: 1" = 600'

BENCH MARK

- W.R. & A. #8 ELEV. 951.66
 1" spike set in base of 12" Twin Poplar,
 75 feet left of Columbia Gateway Dr.
 Sta. 123+45
- W.R. & A. #9 ELEV. 958.69
 1" spike set in base of 14" Oak, 45 feet
 left of Columbia Gateway Drive
 Sta. 119+40

GENERAL NOTES

- Part I -**
1. Approximate locations of existing mains are shown. The contractor shall take all necessary precautions to protect existing mains and services and maintain uninterrupted supply. Any damage incurred shall be repaired immediately to the satisfaction of the engineer at the contractor's expense.
 2. All horizontal controls are based on Maryland State coordinates.
 3. All vertical controls are based on U.S.G.S. data.
 4. All pipe elevations shown are invert elevations.
 5. Clear all utilities by a minimum of 6" (6 inches).
 6. For details not shown on the drawings, and for materials and construction methods, use Howard Co. design manual, Vol. III, Standard specifications & details for construction. The contractor shall have a copy of Vol. III on the job.
 7. Where test pits have been made on an exist. utilities, they are noted by the symbol at the location of the test pit. A note or notes containing the results of the test pits is included on the drawings. Existing utilities in the vicinity of the proposed work for which test pits have not been done shall be verified by the contractor to his own satisfaction. Any damage to exist. facilities due to the contractor's negligence shall be repaired at the contractor's expense.
 8. Contractor shall notify the following utilities or agencies at least (five) 5 working days before starting work shown on these plans: State Highway Administration - 931-9599; Balto Gas & Electric Co. - Contractor Services - 544-2989; Balto Gas & Electric Co. - Underground Damage Control - 234-5621; Balto Gas & Electric Co. - Trouble Shaking - 278-7019; Miss Utility - 1-959-0100; Colonial Pipeline Co. - 795-1910; Bureau of Utilities; Howard Co. Dept. of Public Works - 992-2800.
 9. Trees and shrubs are to be protected from damage to maximum extent. Trees and shrubs located within the construction strip are not to be removed or damaged by the contractor.
 10. Contractor shall remove trees, stumps & roots along line of excavation. Payment for such removal shall be included in the unit price bid for construction of the main.
- Part II -**
- Water**
1. All water mains to be P.I.P. class #2 unless otherwise noted.
 2. Tops of all water mains to have a minimum of 3/16" cover unless otherwise noted.
 3. Valves adjacent to tees shall be strapped to tees.
 4. All fittings shall be buttressed or anchored in concrete in accordance with standard details unless otherwise provided for on the drawings.
 5. Fire hydrants shall be set to the bury line elevations shown on drawings. All fire hydrants shall be strapped and buttressed with concrete in accordance with standard details. Soil around fire hydrants shall be compacted in accordance with section 1009 of the Standard Specifications.
 6. The contractor shall not operate any water main valves on the existing water system.
 7. All water house connections shall be for inside meter settings, unless otherwise noted on the plans or in the specifications.

REVIEWED FOR HOWARD SOIL CONSERVATION DISTRICT AND MEETS TECHNICAL REQUIREMENT
 DATE: 4-6-87
 APPROVED: [Signature]
 HOWARD SOIL CONSERVATION DISTRICT

THE DEVELOPMENT PLAN IS APPROVED FOR SOIL EROSION & SEDIMENT CONTROL BY THE HOWARD SOIL CONSERVATION DISTRICT.
 APPROVED: [Signature]
 DATE: 4-6-87
 HOWARD SOIL CONSERVATION DISTRICT

SEDIMENT CONTROL MEASURES FOR THIS CONTRACT WILL BE IMPLEMENTED IN ACCORDANCE WITH ARTICLE 15 OF THE STD. SPEC & D.P.P. # 87-156

DEPARTMENT OF PUBLIC WORKS
 HOWARD CO., MARYLAND

[Signature] 4-6-87
 Director of Public Works

[Signature] 4-6-87
 Chief, Bureau of Engineering

GEORGE WILLIAM STEPHENS, JR.
 & ASSOCIATES, INC.
 CIVIL ENGINEERS & LAND SURVEYORS

707 ALLEGHENY AVENUE
 TOWSON, MARYLAND
 21286

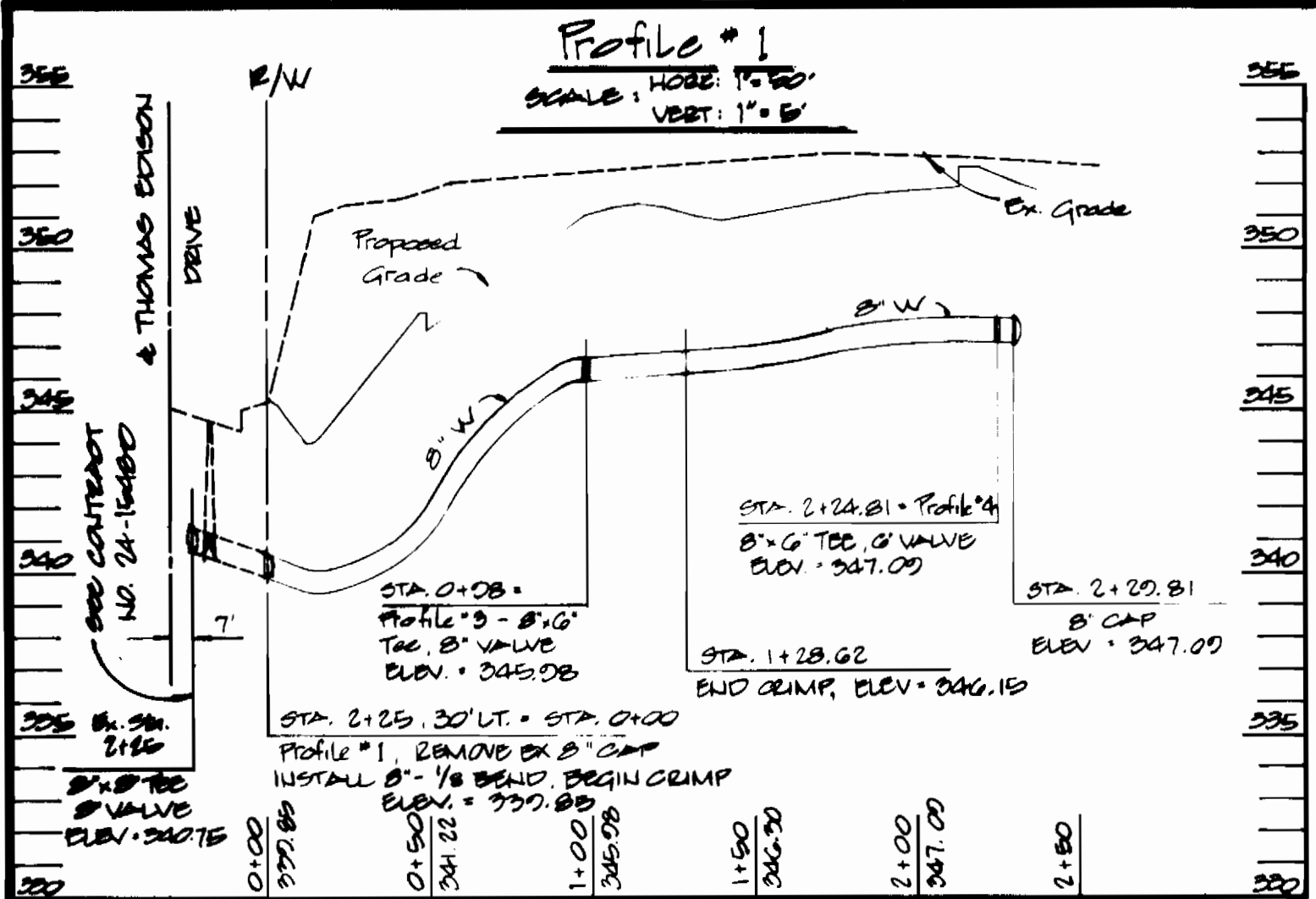
designed: VZ
 drawn: BWM
 checked: PRC

BY	NO.	REVISIONS	DATE

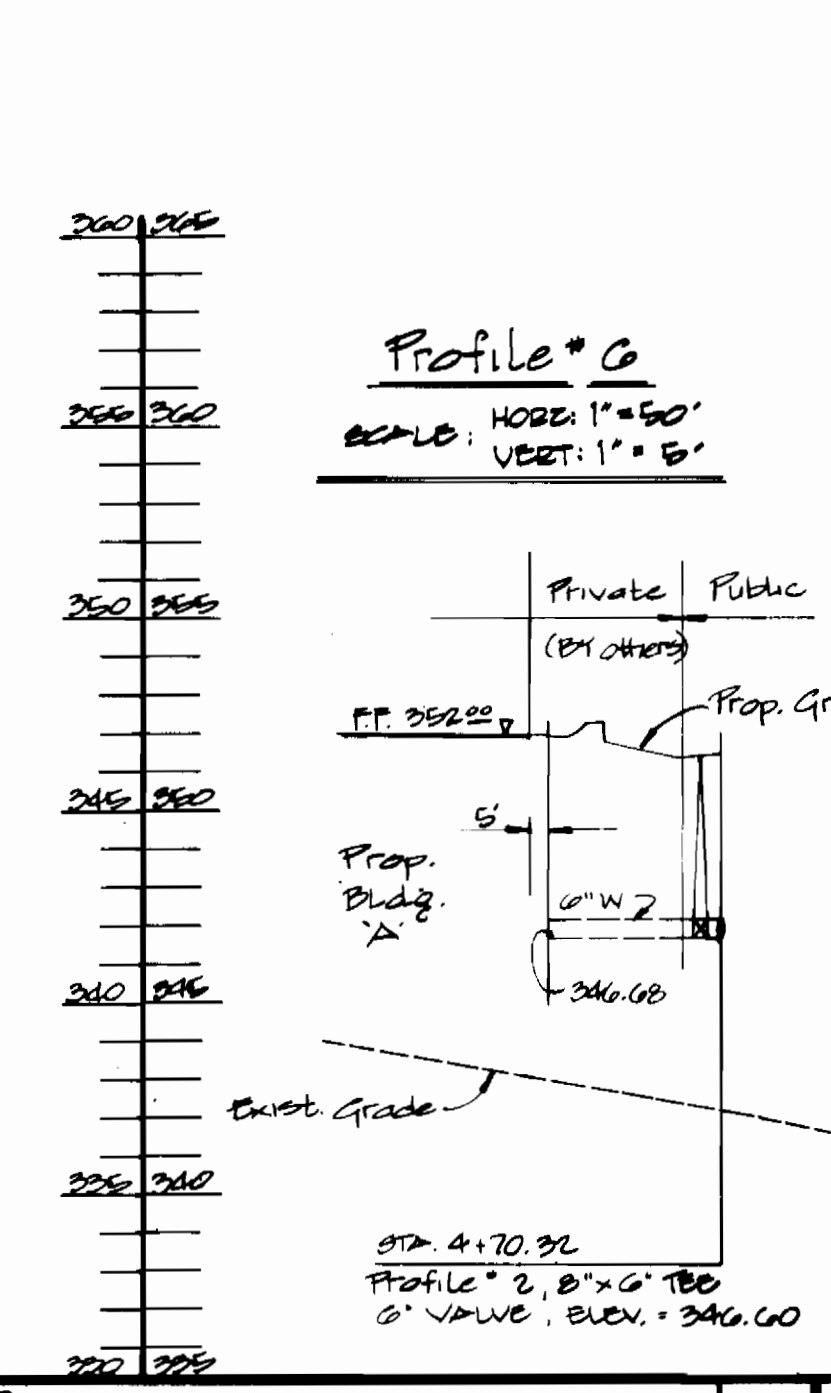
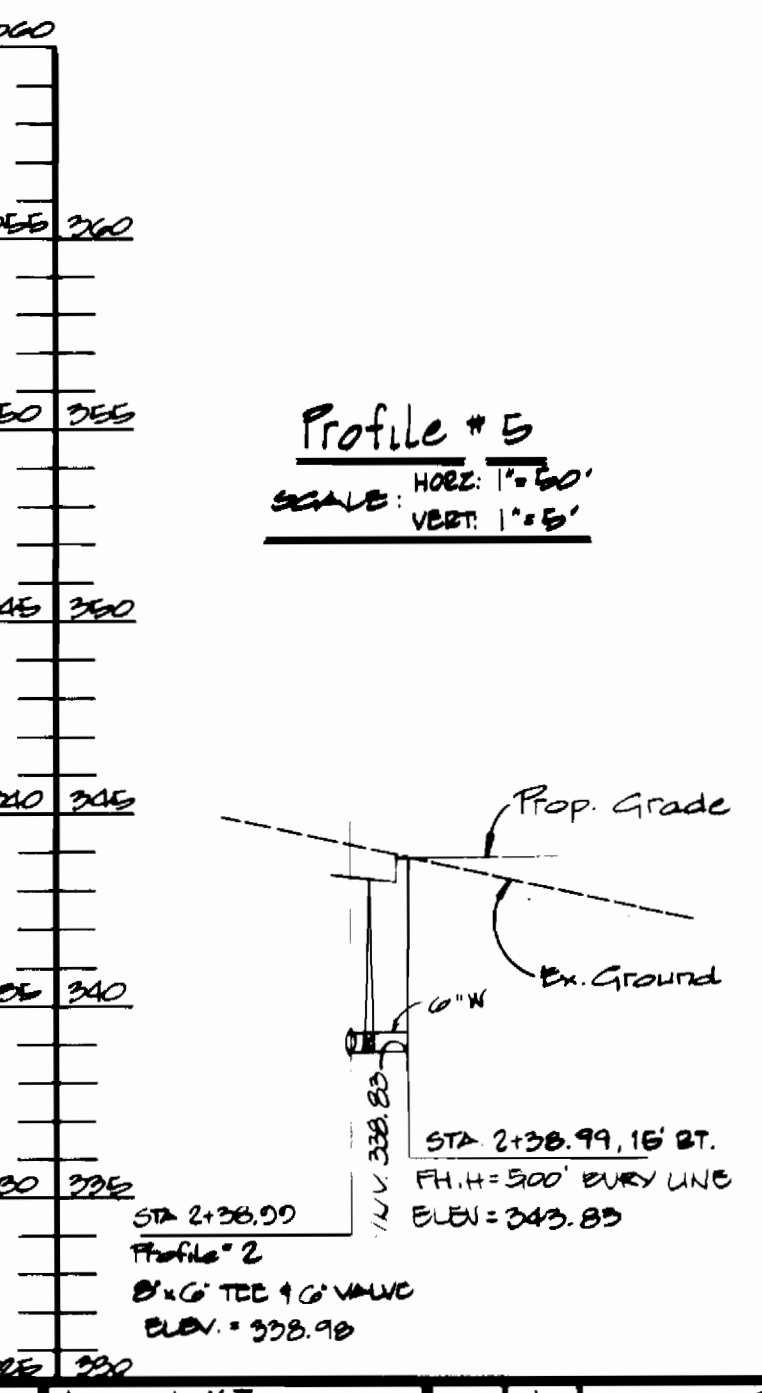
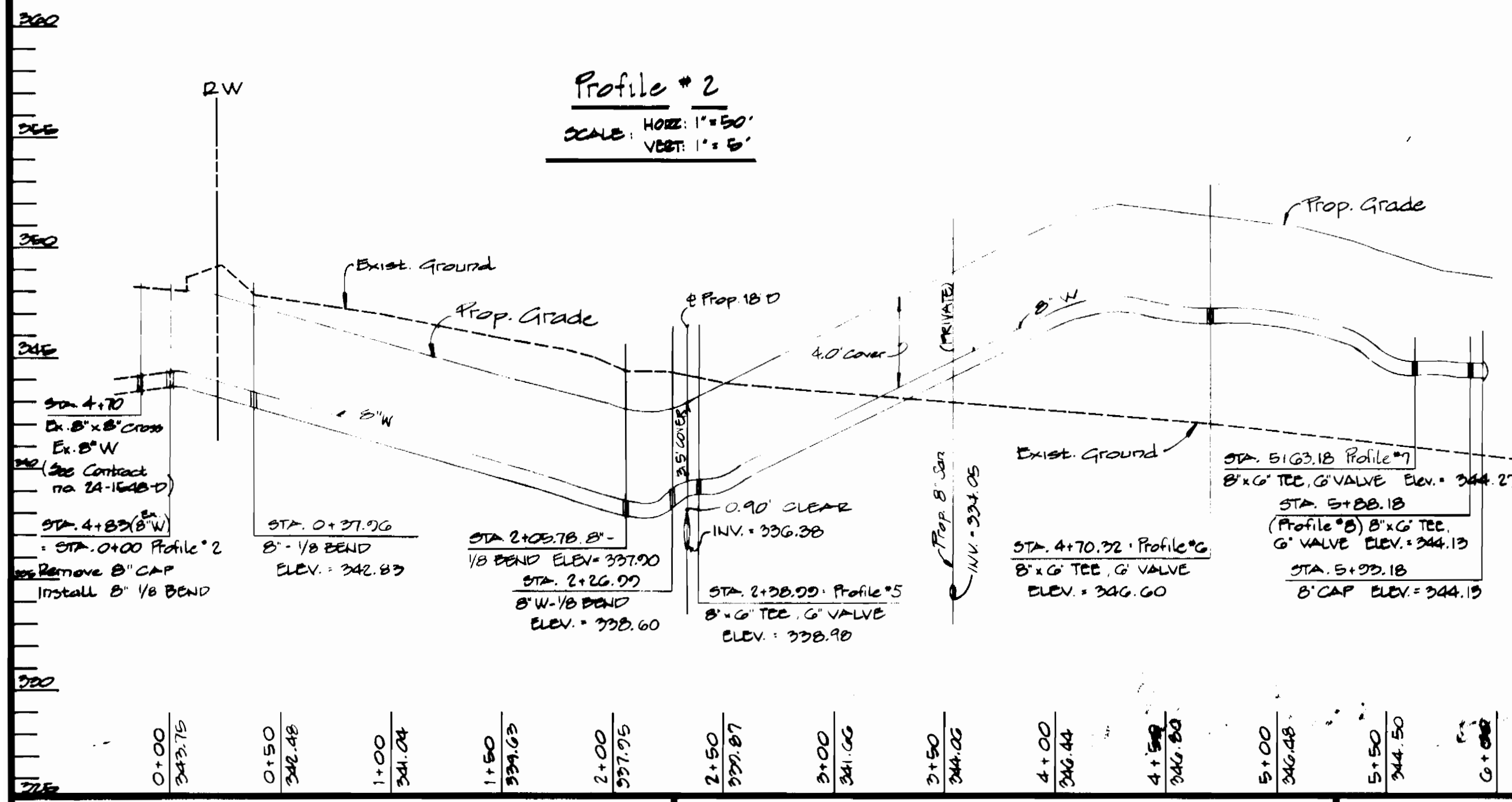
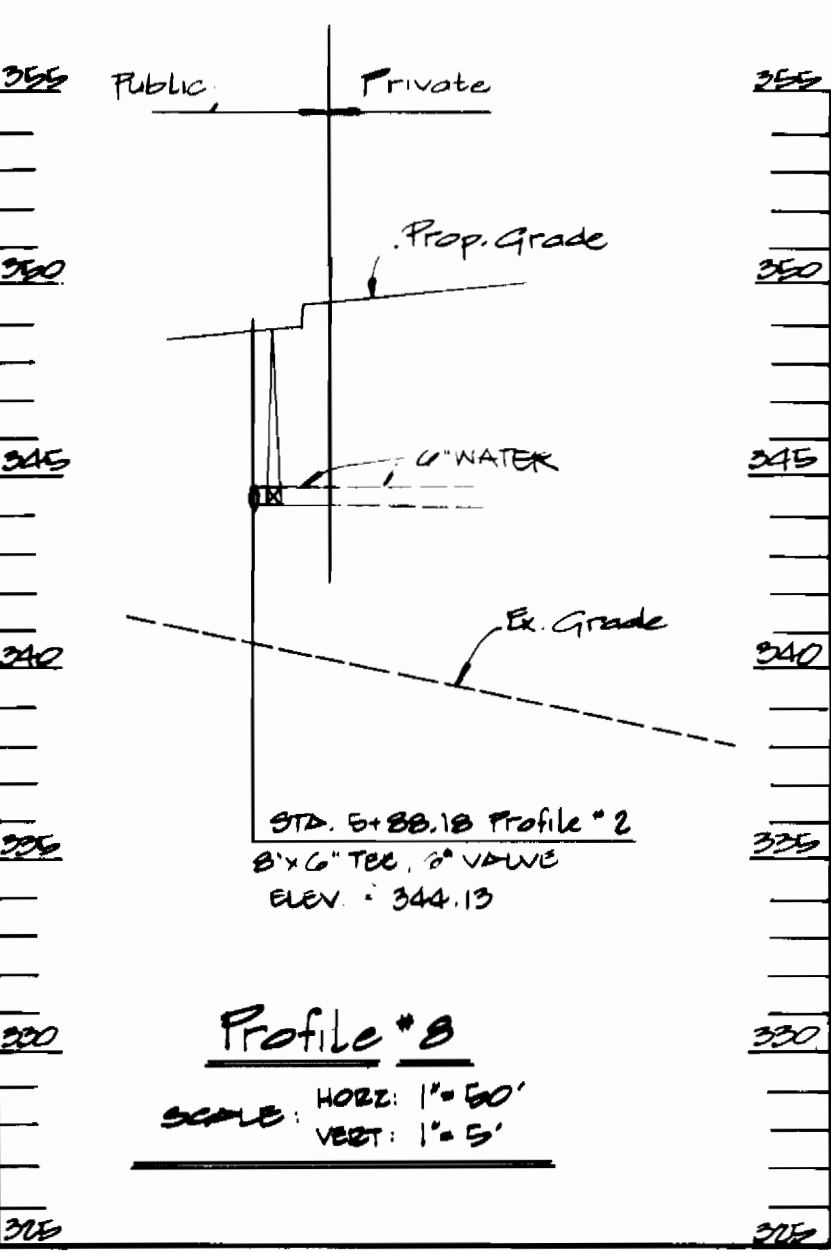
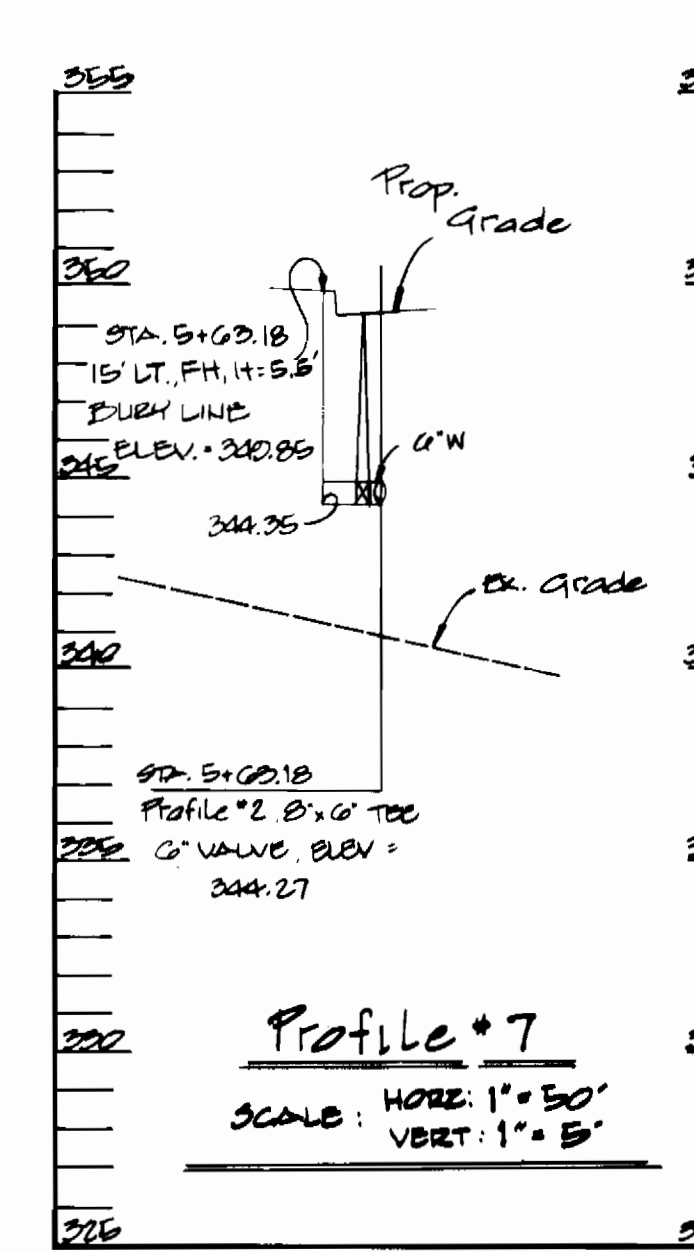
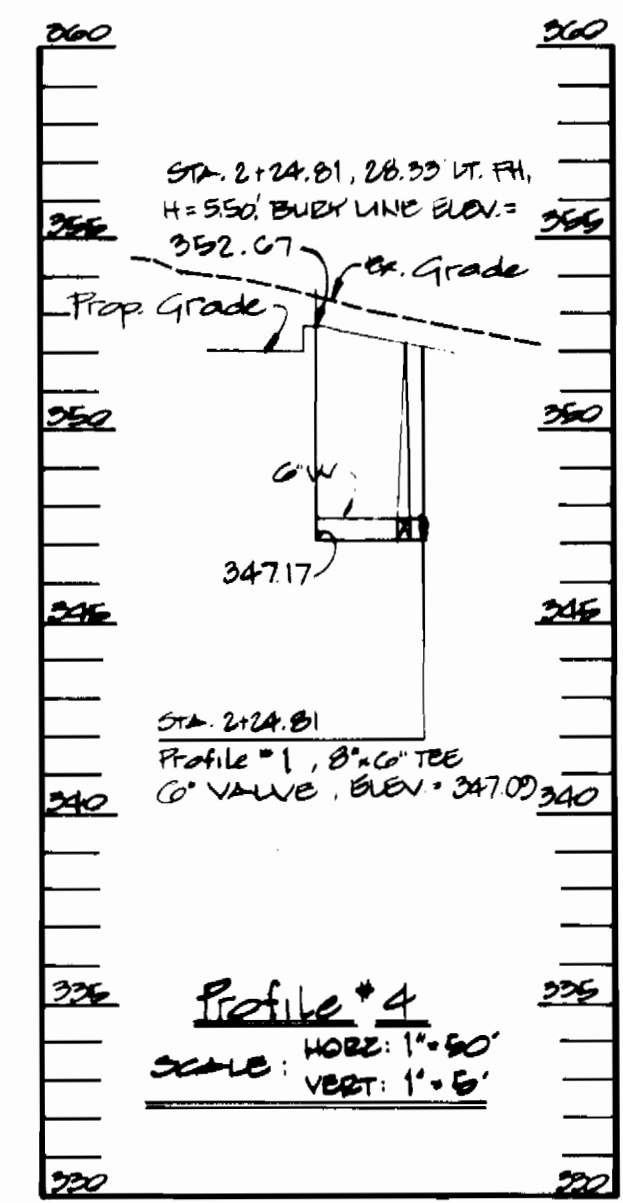
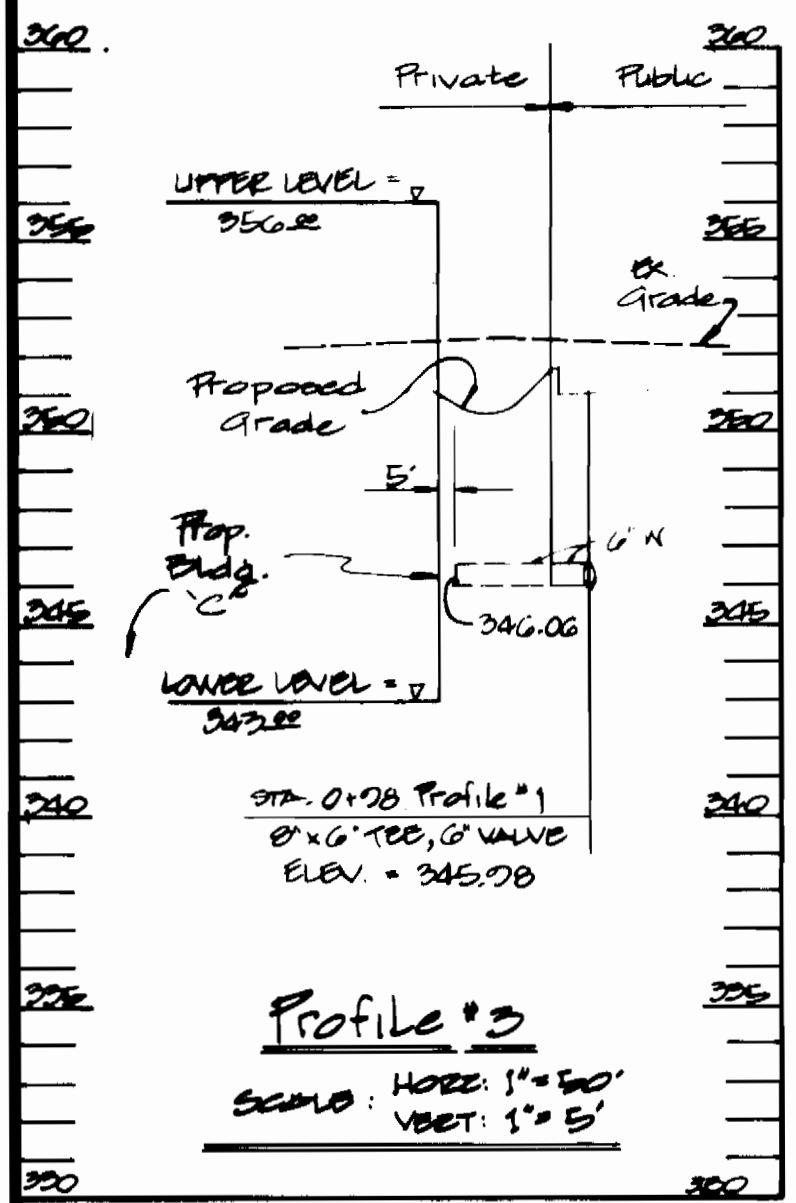
PLAN FOR PROPOSED WATER MAIN
 CONTRACT NO. 44-1640-B
 600' SCALE MAP #03 BLACK NO. 1

COLUMBIA GATEWAY
 PARCELS H-1, H-2, & H-3
 HOWARD CO., MARYLAND
 March 09, 1987

SCALE AS SHOWN
 SHEET 1 of 2



QUANTITIES			
ITEM	ESTIMATED	AS-BUILT	MATERIAL SUPPLIER
G.W.	20'	61'	ATLANTIC SALES LAST 200' PIPE CO.
B.W.	225'	223'	A.P. WATER & SEWER SUPPLIES
G. VALVE	0	0	MULLER CO.
F.H.	3	3	A.P. WATER & SEWER SUPPLIES
B. 1/2 BEND	5	5	UNION BONDARY TRINITY VALLEY
B. X G. TEE	0	0	A.P. WATER & SEWER SUPPLIES
B. CAP	2	2	A.P. WATER & SEWER SUPPLIES



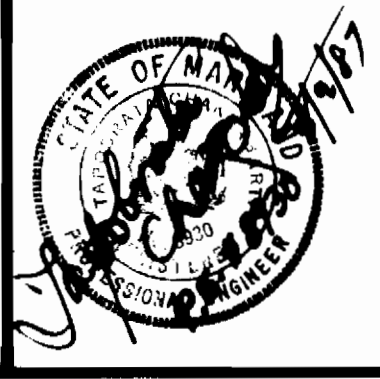
REVIEWED FOR HOWARD SOIL CONSERVATION DISTRICT & MEETS TECHNICAL REQUIREMENTS.

THE DEVELOPMENT PLAN IS APPROVED FOR SOIL EROSION & SEDIMENT CONTROL BY THE HOWARD SOIL CONSERVATION DISTRICT.

SEDIMENT CONTROL MEASURES FOR THIS CONTRACT WILL BE IMPLEMENTED IN ACCORDANCE WITH ARTICLE 16 OF THE STD. SPEC. & S.D.P. 97-154.

DEPARTMENT OF PUBLIC WORKS
HOWARD CO., MARYLAND
JOHN F. NUNNAN 4-10-87
Chief, Bureau of Public Works, Date

GEORGE W.M. STEPHENS, JR.
& ASSOC., INC.
CIVIL ENGINEERS & LAND SURVEYORS
309 ALLEGHENY AVENUE
TOWSON, MARYLAND 21284



DESIGNED	BY	NO.	REVISIONS	DATE
designed: VZ				
drawn: RBM				
checked: PRC				

PROFILES - feet -
PROPOSED WATER MAIN
CONTRACT NO. 44-1640-0
600' SCALE MAP NO. 43 BLOCK NO. 1

COLUMBIA GATEWAY
PARCELS H-1, H-2, H-3
HOWARD COUNTY, MARYLAND
March 09, 1987

AS-BUILT 11/18/87

SCALE AS SHOWN
SHEET 2 OF 2