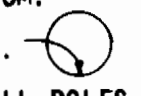
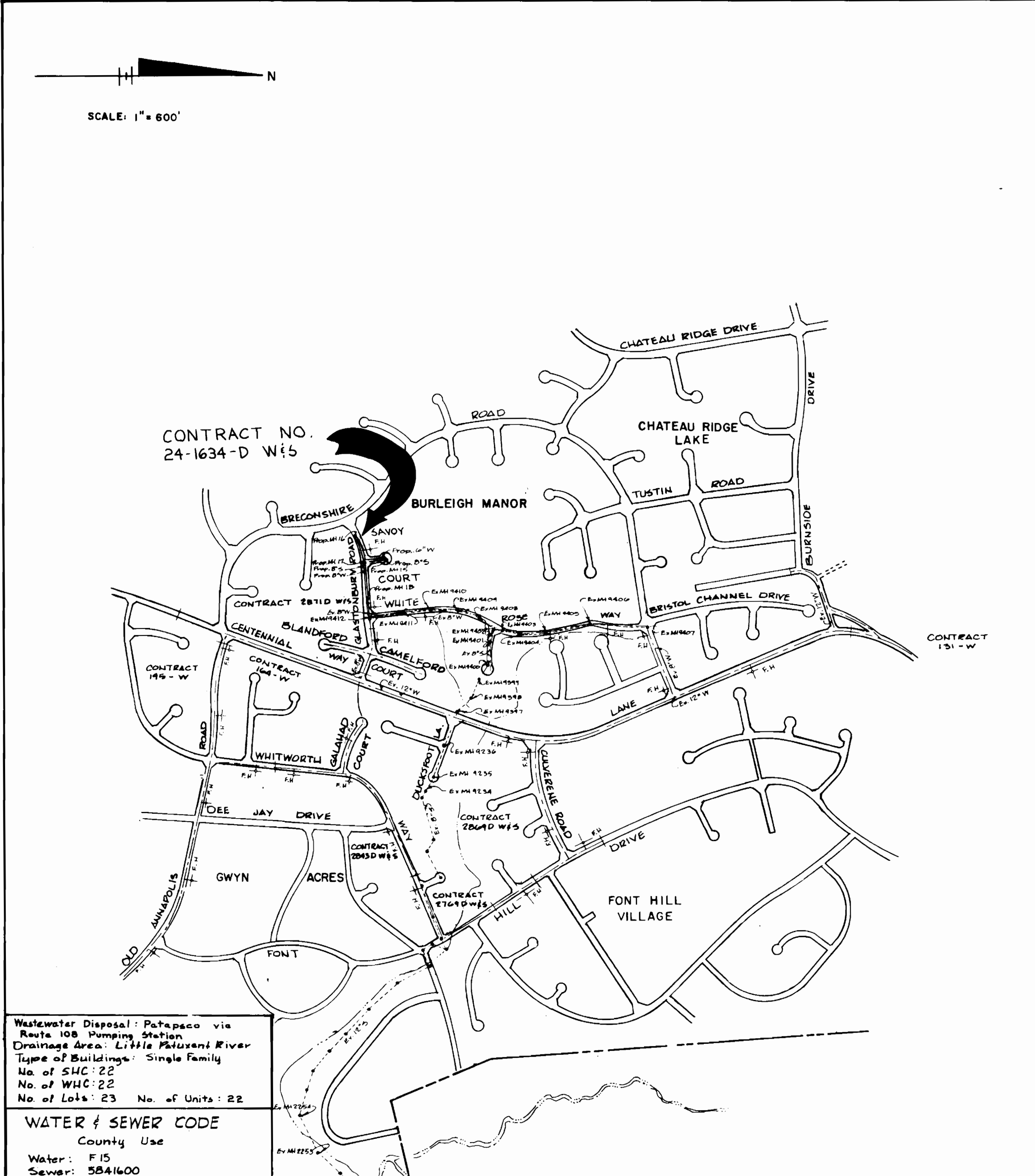


GENERAL NOTES

- APPROXIMATE LOCATION OF EXISTING MAINS ARE SHOWN. THE CONTRACTOR SHALL TAKE ALL NECESSARY PRECAUTIONS TO PROTECT EXISTING MAINS AND SERVICES AND MAINTAIN UNINTERRUPTED SUPPLY. ANY DAMAGE INCURRED SHALL BE REPAIRED IMMEDIATELY TO THE SATISFACTION OF THE ENGINEER, AT THE CONTRACTOR'S EXPENSE.
- ALL HORIZONTAL CONTROLS ARE BASED ON MARYLAND STATE COORDINATES.
- ALL VERTICAL CONTROLS ARE BASED ON U.S.G.S. DATUM.
- ALL PIPE ELEVATIONS SHOWN ARE INVERT ELEVATIONS.
- CLEAR ALL UTILITIES BY A MINIMUM OF 6". CLEAR ALL POLES BY 2'-0" MINIMUM OR TUNNEL AS REQUIRED.
- FOR DETAILS NOT SHOWN ON THE DRAWINGS, AND FOR MATERIALS AND CONSTRUCTION METHODS USED HOWARD COUNTY DESIGN MANUAL, VOLUME IV. STANDARD SPECIFICATIONS AND DETAILS FOR CONSTRUCTION. THE CONTRACTOR SHALL HAVE A COPY OF VOLUME IV ON THE JOB.
- WHERE TEST PITS HAVE BEEN MADE ON EXISTING UTILITIES, THEY ARE NOTED BY THE SYMBOL  AT THE LOCATION OF THE TEST PIT. A NOTE OR NOTES CONTAINING THE RESULTS OF THE TEST PIT OR PITS IS INCLUDED ON THE DRAWINGS. EXISTING UTILITIES IN THE VICINITY OF THE PROPOSED WORK FOR WHICH TEST PITS HAVE NOT BEEN DUG SHALL BE VERIFIED BY THE CONTRACTOR TO HIS OWN SATISFACTION. ANY DAMAGE TO EXISTING FACILITIES DUE TO THE CONTRACTOR'S NEGLIGENCE SHALL BE REPAIRED AT THE CONTRACTOR'S EXPENSE.
- CONTRACTOR SHALL NOTIFY THE FOLLOWING UTILITIES OR AGENCIES AT LEAST FIVE WORKING DAYS BEFORE STARTING WORK SHOWN ON THESE PLANS:
 - STATE HIGHWAY ADMINISTRATION - 531-5533
 - BALTIMORE GAS AND ELECTRIC CO. - CONTRACTOR SERVICES 850-4620
 - BALTIMORE GAS AND ELECTRIC CO. - UNDER GROUND DAMAGE CONTROL - 859-9004
 - BALTIMORE GAS AND ELECTRIC CO. - TROUBLE SHOOTING - 298-9001
 - MISS UTILITY - 1 - 559-0100
 - COLONIAL PIPELINE CO. - 795-1390/C&P TELEPHONE CO. - 1-800-257-7777
 - BUREAU OF UTILITIES HOWARD COUNTY DEPARTMENT OF PUBLIC WORKS - 992-2366
- TREES AND SHRUBS ARE TO BE PROTECTED FROM DAMAGE TO A MAXIMUM EXTENT. TREES AND SHRUBS LOCATED WITHIN THE CONSTRUCTION STRIP ARE NOT TO BE REMOVED OR DAMAGED BY THE CONTRACTOR.
- CONTRACTOR SHALL REMOVE TREES, STUMPS AND ROOTS ALONG LINE OF EXCAVATION.
- ALL WATER MAINS TO BE D.I.P. CLASS 52 UNLESS OTHERWISE NOTED.
- TOPS OF ALL WATER MAINS TO HAVE A MINIMUM OF 3'-1/2' COVER UNLESS OTHERWISE NOTED.
- VALVES ADJACENT TO TEES SHALL BE STRAPPED TO TEES.
- ALL FITTINGS SHALL BE BUTTRESSED OR ANCHORED WITH CONCRETE IN ACCORDANCE WITH THE STANDARD DETAILS UNLESS OTHERWISE PROVIDED FOR ON THE DRAWINGS.
- FIRE HYDRANTS SHALL BE SET TO THE BURY LINE ELEVATIONS SHOWN ON THE DRAWINGS. ALL FIRE HYDRANTS SHALL BE STRAPPED AND BUTTRESSED WITH CONCRETE IN ACCORDANCE WITH STANDARD DETAILS. SOIL AROUND THE FIRE HYDRANT SHALL BE COMPACTED IN ACCORDANCE WITH SECTION 1003 THE STANDARD SPECIFICATIONS.
- THE CONTRACTOR SHALL NOT OPERATE ANY WATER MAIN VALVES ON THE EXISTING WATER SYSTEM.
- ALL WATER HOUSE CONNECTIONS SHALL BE FOR INSIDE METER SETTINGS, UNLESS OTHERWISE NOTED ON THE PLANS OR IN THE SPECIFICATIONS.
- ALL W.H.C.'S SHALL BE 3/4" UNLESS OTHERWISE NOTED.
- ALL COPPER WATER HOUSE CONNECTIONS SHALL UTILIZE FLARED FITTINGS.
- ALL SEWER MAINS SHALL BE C.S.P.X., D.I.P., V.C.P.X., A.C.P. CLASS 2400 OR P.V.C. UNLESS OTHERWISE NOTED.
- THE CONTRACTOR SHALL PROVIDE A JOINT IN ALL SEWER MAINS WITHIN 2'-0" OF EXTERIOR MANHOLE WALL.
- ALL MANHOLES SHALL BE 4'-0" INSIDE DIAMETER UNLESS OTHERWISE NOTED.
- MANHOLES SHOWN WITH 12" AND 16" WALLS ARE FOR BRICK MANHOLES ONLY.
- MANHOLES DESIGNATED W.T. IN PLAN AND PROFILE SHALL HAVE WATERTIGHT FRAME AND COVERS. STANDARD DETAIL 65.52 WHERE WATERTIGHT MANHOLE FRAME AND COVER IS USED, SET TOP OF FRAME 1.5' ABOVE FINISHED GRADE UNLESS OTHERWISE NOTED ON THE DRAWINGS.
- STRAW BALE DIKE AND SILT FENCE ARE INTERCHANGEABLE.
- FOR MANHOLES IN OPEN SPACE OR OUTFALL, SET TOP OF FRAME 1.5' ABOVE FINISHED GRADE UNLESS OTHERWISE NOTED ON THE DRAWINGS.

QUANTITIES			
ITEM	BID	AS BUILT	MATERIAL/SUPPLIER
Manholes	635	831 L.F.	P.V.C./H+W INDUSTRIES
8" Water L.F.	636	636 L.F.	GRIFFIN PIPE PRODUCTS CO.
6" Water L.F.	223	223 L.F.	" " " " " "
Fire Hydrants Ea.	2	2 Ea.	AIRL-CUB/MAN VALVE CO.
8" Valve Ea.	1	1 Ea.	" " " " " "
6" V (EXCEPT FM)	1	1 Ea.	" " " " " "
1/2" H.C. L.F.	54	128 L.F.	COPPER/KAMBRIDGE LEE
3/4" W.H.C. L.F.	530	549 L.F.	" " " " " "
6" S.H.C. L.F.	490	446 L.F.	P.V.C./H+W INDUSTRIES
6" D.H.C. V.F.	4,4	3,2 V.F.	" " " " " "
1/2" Drain	1	1 Ea.	COPPER/KAMBRIDGE LEE



CONTRACT NO. 24-1634-D W&S
 BURLEIGH MANOR
 HOWARD COUNTY, MARYLAND
 DEPARTMENT OF PUBLIC WORKS

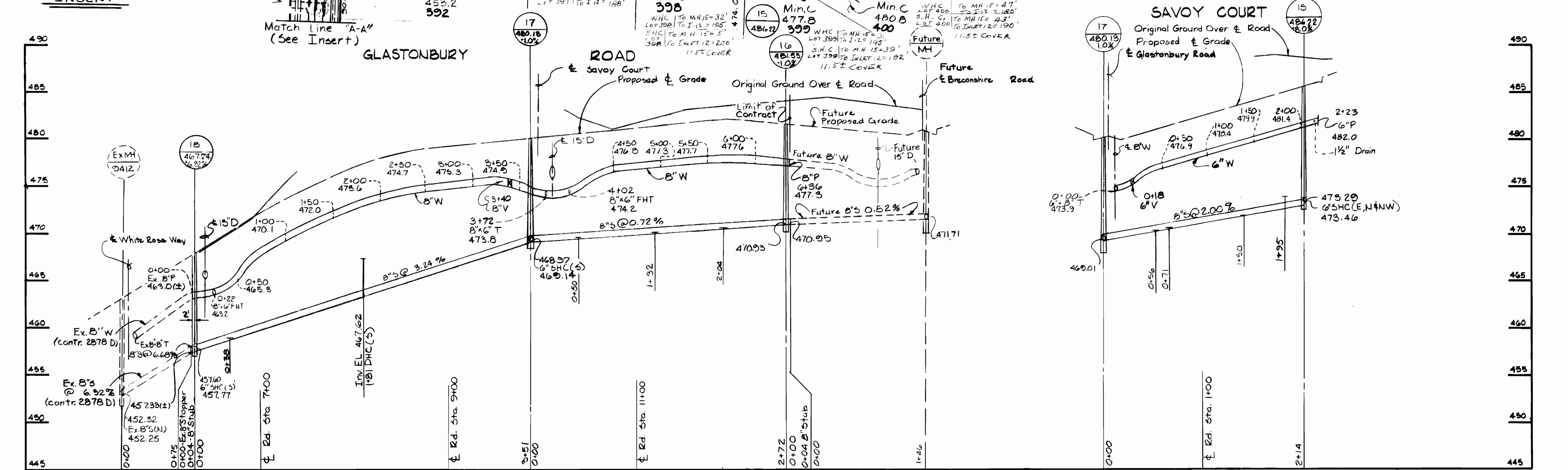
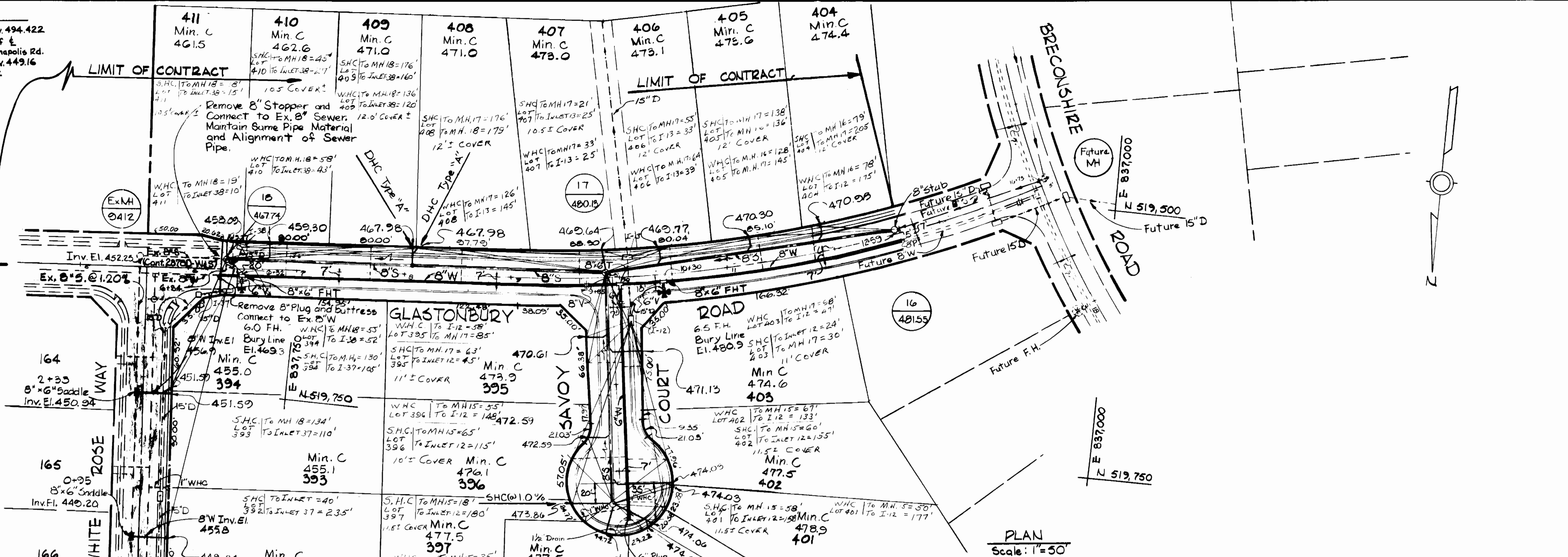
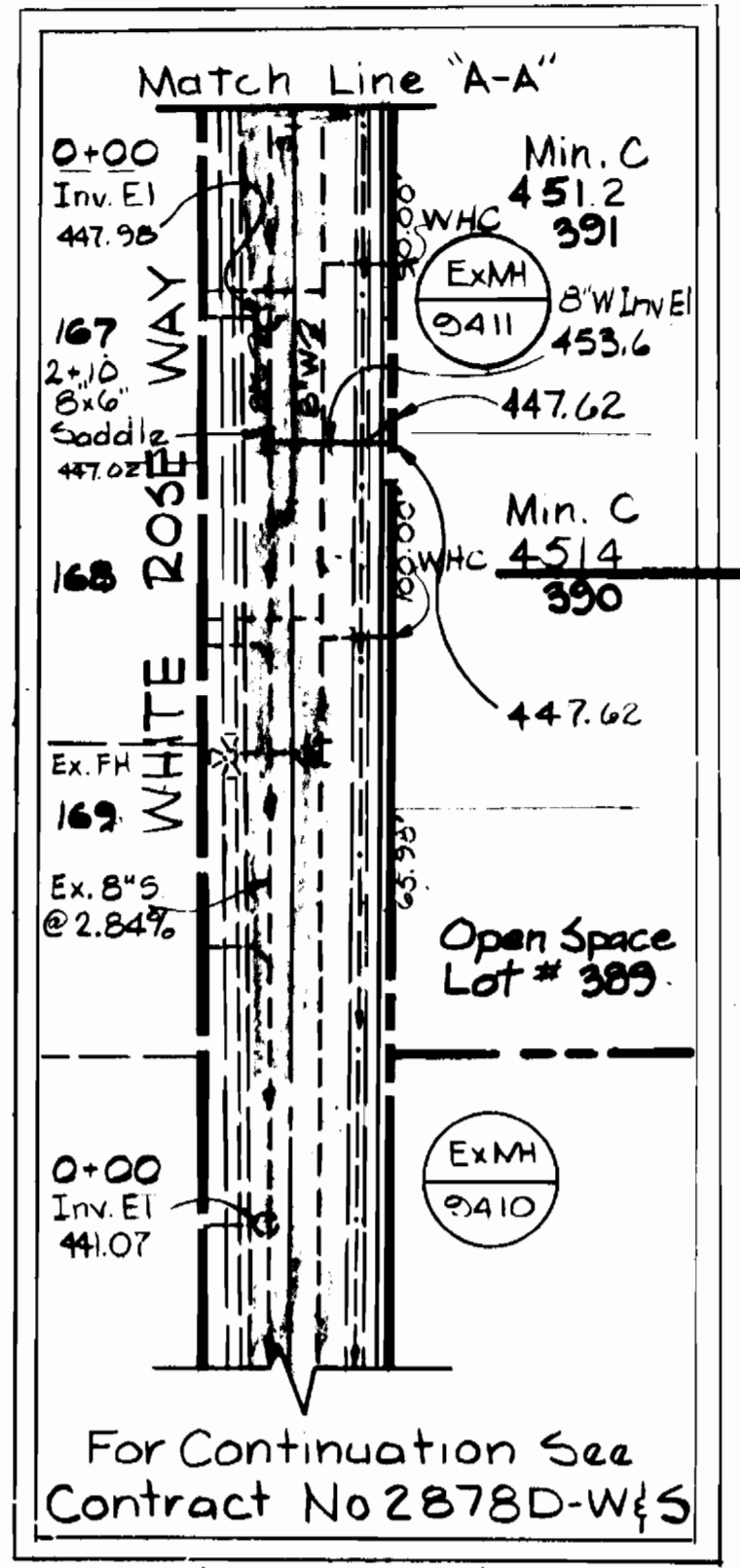
REVIEWED FOR HOWARD SOIL CONSERVATION DISTRICT AND MEETS TECHNICAL REQUIREMENT
 Signature: *James D. Nelson* 7-31-87
 U.S. SOIL CONSERVATION SERVICE

This Development Plan is approved for Soil Erosion and Sediment Control by the Howard County Conservation District
 APPROVED
 HOWARD S.C.D. DATE

Sediment Control Measures for this Contract will be implemented in accordance with Section 219 of the Standard Specifications and Road Construction Drawings F-B7-180

DEPARTMENT OF PUBLIC WORKS HOWARD COUNTY, MARYLAND Director of Public Works - DATE <i>Robert M. Berman</i> 7-27-87 Chief - Bureau of Utilities - DATE	WHITMAN, REQUARDT AND ASSOCIATES ENGINEERS 2315 ST PAUL ST BALTIMORE, MARYLAND Chief - Bureau of Engineering - DATE Chief - Land Development Division - DATE	DES. S.J.G. DRN. R.L.P. CHK. S.J. DATE	VICINITY MAP AND GENERAL NOTES BURLEIGH MANOR SECTION 3 AREA 2 ELECTION DISTRICT NO. 2 CONTRACT NO. 24-1634-D	SCALE 1"=600' SHEET 1 OF 2
---	--	---	--	-------------------------------

BENCH MARKS
 Howard Co-Controll Point #3040001 Elev. 494.422
 Concrete monument at surface 25'± E of E of Centennial Lane, 70'± South of Old Annapolis Rd.
 W.R. & A. BM # W-332 Elev. 449.16
 Iron pipe 140'± west of E sta 29+35 ± Breconshire Rd.



DEPARTMENT OF PUBLIC WORKS
 HOWARD COUNTY, MARYLAND
 Director of Public Works - DATE
 Chief of Engineering - DATE
 Chief - Bureau of Utilities - DATE
 Chief - Land Development Division - DATE

WHITMAN, REQUARDT
 AND ASSOCIATES
 ENGINEERS
 2315 ST PAUL ST
 BALTIMORE, MARYLAND

DES. J.J.G.	DRN. M.B.	CHK. S.J.	DATE
R.L.P. 4	S.J.G. 3	DMR. 2	DMR. 1
8" V Connection; W inverts called out White Rose			
Elevation corrections - MH-18 and Bury Line			
As per DPW comment #5			
Planning and Zoning comments #1,3			

PLAN & PROFILE OF
 WATER & SEWER MAINS

BURLEIGH MANOR
 SECTION 3 AREA 2
 ELECTION DISTRICT NO. 2
 CONTRACT NO. 24-1634-D
 SCALE AS SHOWN
 SHEET 2 OF 2