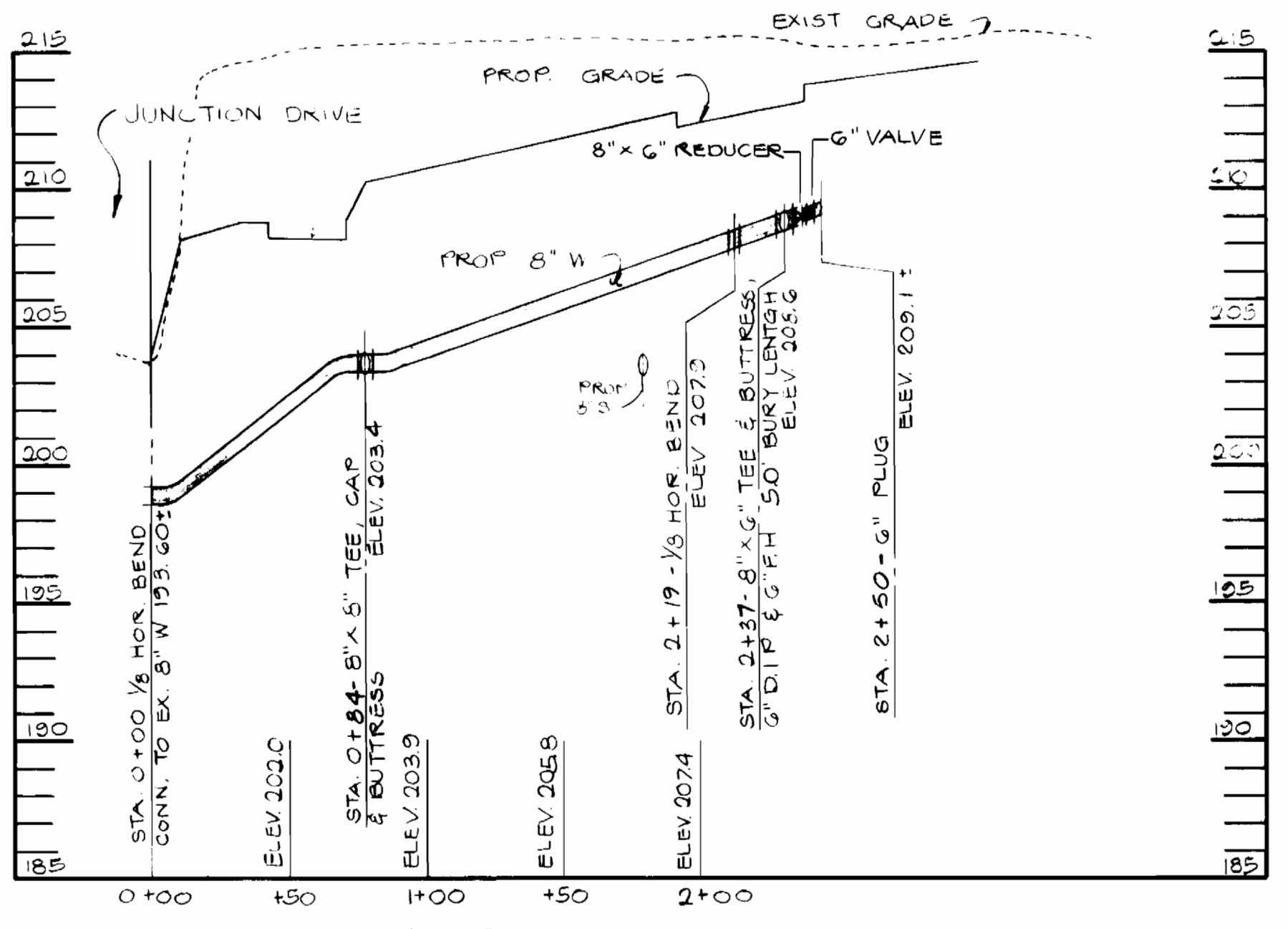
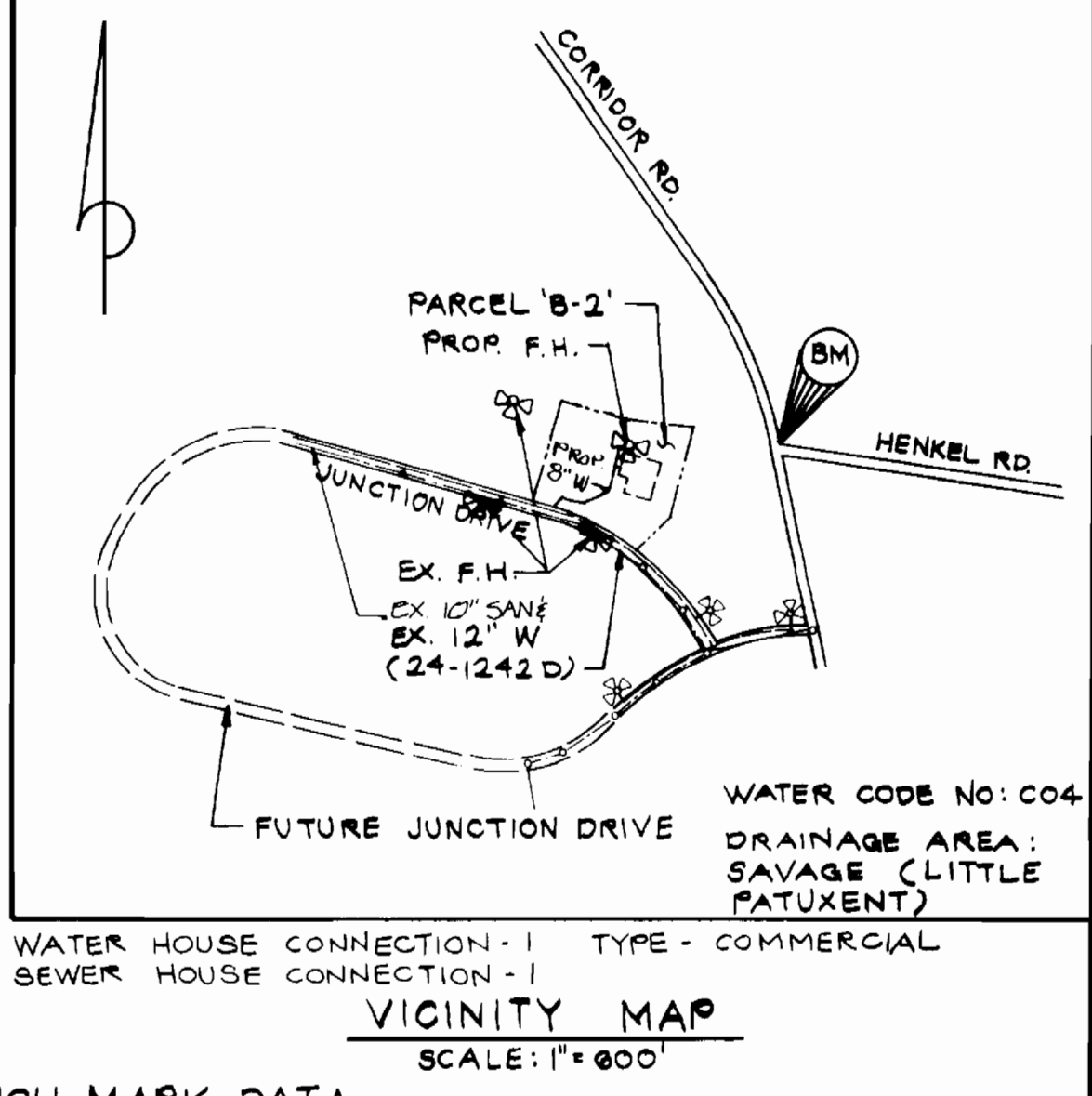


PLAN
SCALE: 1" = 50'



PROFILE
SCALE: HOR 1" = 50'
VERT. 1" = 5'

QUANTITIES				
NO.	ITEMS	PROPOSED	AS BUILT	SUPPLIER
1	6" WATER	15 LF	15 LF	U.S. PIPE CLASS 52 TYTON JOINT
2	8" WATER	231 LF	231 LF	U.S. PIPE CLASS 52 TYTON JOINT
3	6" VALVE W/ VALVE BOX	2	2 EA.	METRO U.S. PIPE
4	F.H.	1	1 EA.	METRO U.S. PIPE
5	8" x 6" TEE & BUTTRESS	1	1 EA.	U.S. PIPE
6	1/8 BEND (8")	1	1 EA.	U.S. PIPE
7	8" x 6" REDUCER	1	1 EA.	U.S. PIPE
8	8" x 8" TEE & BUTTRESS & CAP	1	1 EA.	U.S. PIPE



BENCH MARK DATA
 BM NO. 1 ELEV. 210.71
 □ - CUT END CONC. CURB, N SIDE CORRIDOR RD.
 ⊙ - INTERSECTION OF CORRIDOR RD AND HENKEL RD.
 BM NO. 24 ELEV. 159.19
 POLE NO. J-5 ON NORTH SIDE OF BROCK BRIDGE RD.

WATER MAIN NOTES

1. ALL WATER MAINS TO BE C.I.P. OR D.I.P. UNLESS OTHERWISE NOTED
2. TOP OF ALL WATER MAINS TO HAVE A MINIMUM OF 3 1/2' COVER UNLESS OTHERWISE NOTED
3. VALVES ADJACENT TO TEES SHALL BE STRAPPED TO TEES.
4. BLOCK ALL FITTINGS WITH CONCRETE.
5. BURY LINE ELEVATIONS ON FIRE HYDRANTS SHALL BE SET TO THE ELEVATIONS SHOWN ON THE DRAWINGS. ALL FIRE HYDRANTS SHALL BE STRAPPED AND BUTTRESSED WITH CONCRETE IN ACCORDANCE WITH STANDARD DETAILS. SOIL AROUND THE FIRE HYDRANT TO BE COMPACTED IN ACCORDANCE WITH SECTIONS 10.03 AND 10.08 OF THE STANDARD SPECIFICATIONS.
6. ALL WATER HOUSE CONNECTIONS SHALL BE FOR AN INSIDE METER SETTING.
7. THE CONTRACTOR SHALL NOT OPERATE ANY WATER MAIN VALVES ON THE EXISTING SYSTEM.

GENERAL NOTES

1. APPROXIMATE LOCATION OF EXISTING MAINS ARE SHOWN. THE CONTRACTOR SHALL TAKE ALL NECESSARY PRECAUTIONS TO PROTECT EXISTING MAINS AND SERVICES AND MAINTAIN UNINTERRUPTED SUPPLY ANY DAMAGE INCURRED SHALL BE REPAIRED IMMEDIATELY TO THE SATISFACTION OF THE ENGINEER, AT THE CONTRACTOR'S EXPENSE.
2. ALL HORIZONTAL CONTROLS ARE BASED ON MARYLAND STATE COORDINATES.
3. ALL VERTICAL CONTROLS ARE BASED ON U.S.G.S. DATUM.
4. ALL PIPE ELEVATIONS SHOWN ARE INVERT ELEVATIONS.
5. CLEAR ALL UTILITIES BY A MINIMUM OF 6'. CLEAR ALL POLES BY 2'-0" MINIMUM OR TUNNEL AS REQUIRED. ANY COST INCURRED TO THE CONTRACTOR FOR TUNNELING OR BRACING AT POLES SHALL BE INCLUDED IN UNIT PRICES BID FOR CONSTRUCTION OF THE MAIN.
6. FOR DETAILS NOT SHOWN ON THE DRAWINGS USE HOWARD COUNTY STANDARD DETAILS.
7. FOR MATERIALS AND CONSTRUCTION METHODS USE HOWARD COUNTY STANDARD SPECIFICATIONS.
8. CONTRACTOR SHALL LOCATE EXISTING UTILITIES A MINIMUM OF TWO (2) WEEKS IN ADVANCE OF CONSTRUCTION OPERATIONS IN THE VICINITY OF PROPOSED UTILITIES AT HIS OWN EXPENSE.
9. CONTRACTOR SHALL NOTIFY THE FOLLOWING UTILITIES OR AGENCIES AT LEAST FIVE (5) DAYS BEFORE STARTING WORK SHOWN ON THESE PLANS:
 STATE HIGHWAY ADMINISTRATION - 531-5533
 BALTIMORE GAS AND ELECTRIC COMPANY - UNDERGROUND ELECTRIC DISTRIBUTION CUSTOMER SERVICE - 685-0123
 BALTIMORE GAS AND ELECTRIC COMPANY - UNDERGROUND GAS DISTRIBUTION CUSTOMER SERVICE - 685-0123
 ENGINEERING - "DAMAGE CONTROL" - 234-5621
 "MISS UTILITY" - 1-553-0100
 CHESAPEAKE & POTOMAC (C&P) TELEPHONE COMPANY - 725-2076
 AMERICAN TELEPHONE AND TELEGRAPH - CABLE LOCATION DIVISION - 303-3553
 COLONIAL PIPELINE COMPANY - 795-1350
 BUREAU OF UTILITIES HOWARD COUNTY - 502-2366
10. TREES ARE TO BE PROTECTED FROM DAMAGE TO THE MAXIMUM EXTENT. TREES LOCATED WITHIN THE CONSTRUCTION STRIP ARE NOT TO BE REMOVED OR DAMAGED BY THE CONTRACTOR.
11. CONTRACTOR SHALL REMOVE TREES, STUMPS AND ROOTS ALONG LINE OF EXCAVATION AS DIRECTED BY THE ENGINEER. PAYMENT FOR SUCH REMOVAL SHALL BE INCLUDED IN THE UNIT PRICE BID FOR CONSTRUCTION OF THE MAIN.
12. PLACE REGULATION "MEN WORKING" AND WARNING SIGNS AS REQUIRED TO COMPLY WITH MARYLAND STATE HIGHWAY ADMINISTRATION MANUAL OF TRAFFIC CONTROL FOR HIGHWAY CONSTRUCTION AND MAINTENANCE OPERATIONS.

SEDIMENT CONTROL MEASURES WILL BE IMPLEMENTED AND IN ACCORDANCE WITH ARTICLE 15 OF THE SPECIFICATIONS AND SDP-87-110.

THIS DEVELOPMENT PLAN IS APPROVED FOR SOIL EROSION AND SEDIMENT CONTROL BY THE HOWARD COUNTY SOIL CONSERVATION DISTRICT APPROVED: <i>[Signature]</i> DATE: 4/27/97 HOWARD CO. SOIL CONSERVATION DISTRICT	REVIEWED FOR HOWARD SOIL CONSERVATION DISTRICT AND MEETS TECHNICAL REQUIREMENTS APPROVED: <i>[Signature]</i> DATE: 4/27/97 U.S. SOIL CONSERVATION SERVICE
--	---

DEPARTMENT OF PUBLIC WORKS
 HOWARD COUNTY, MARYLAND
 DIRECTOR OF PUBLIC WORKS: *[Signature]* DATE: 5-6-97
 CHIEF - BUREAU OF ENGINEERING: *[Signature]* DATE: 5-6-97
 CHIEF - BUREAU OF UTILITIES: *[Signature]* DATE: 5-1-97
 CHIEF - LAND DEVELOPMENT DIVISION: *[Signature]* DATE: 5-1-97

WHITNEY CONSULTING ENGINEERS
 BAILEY
 OX
 MAGNANI
 1850 York Road
 Timonium Md. 21093
 301-252-6060



DES: P.D.
 J.L.B.
 DRN: M.E.W.
 CHK: P.D.
 DATE: 4-10-97
 WBCM: *[Signature]*
 BY: NO.
 PLAN, PROFILE & UTILITIES REVISED
 REVISION
 DATE: 6/13/97

PLAN OF WATER MAIN
 CONTRACT NO. 44-1G31-D
 600' SCALE MAP NO. 48 BLOCK NO. 19

WATER MAIN EXTENSION
 PARCEL 'B-2'
 JUNCTION INDUSTRIAL PARK SECTION I
 ELECTION DISTRICT GUILFORD NO. 6
 HOWARD COUNTY, MARYLAND
 AS-BUILT
 AS-BUILT
 5-16-97