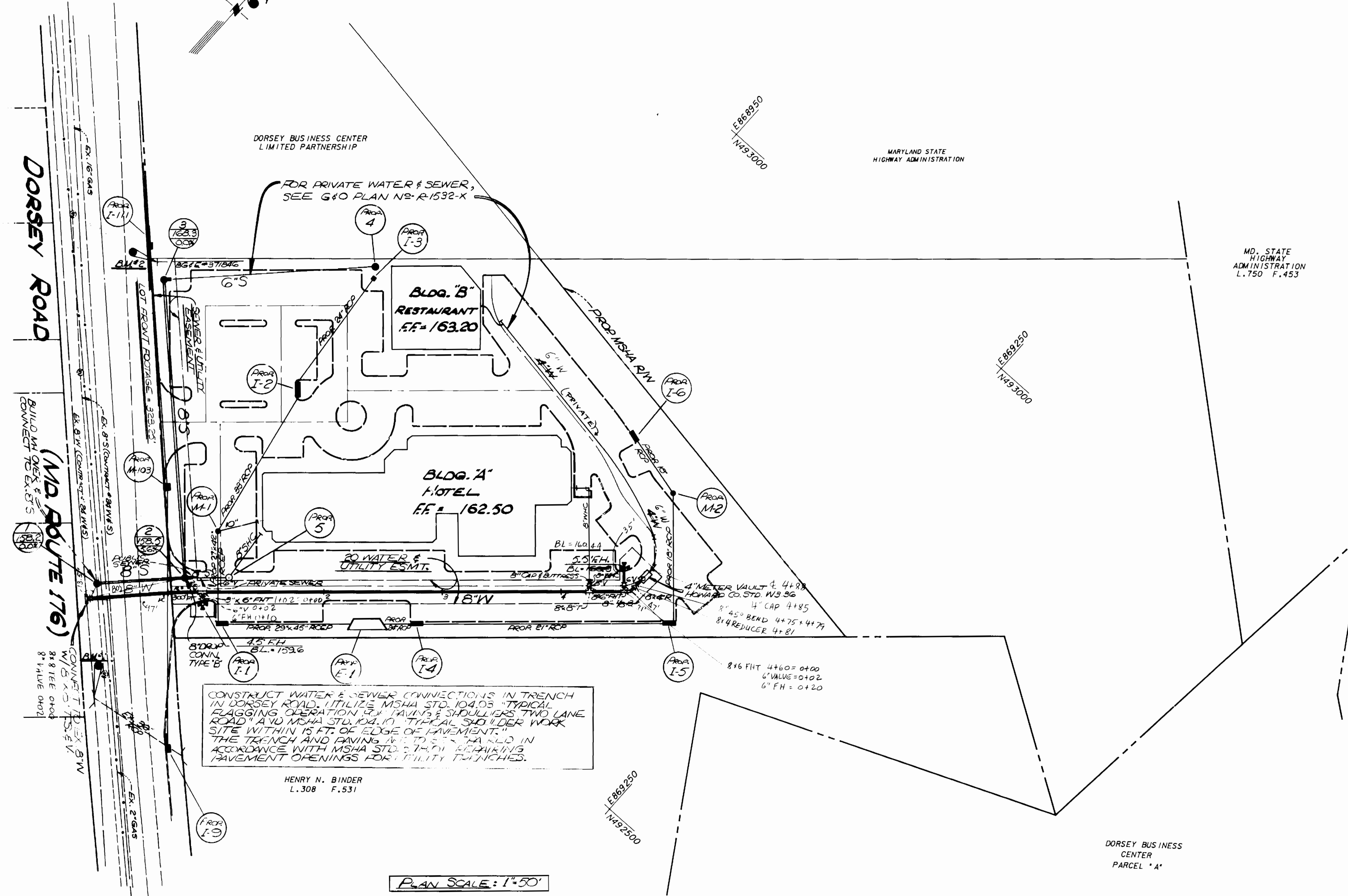


B.M.#1 ELEV. 152.69
 10' IN TOP CENTER OF HEADWALL SW
 OF DORSEY ROAD @ 36' RCP 20' S.E.
 OF S.E. CORNER OF SITE

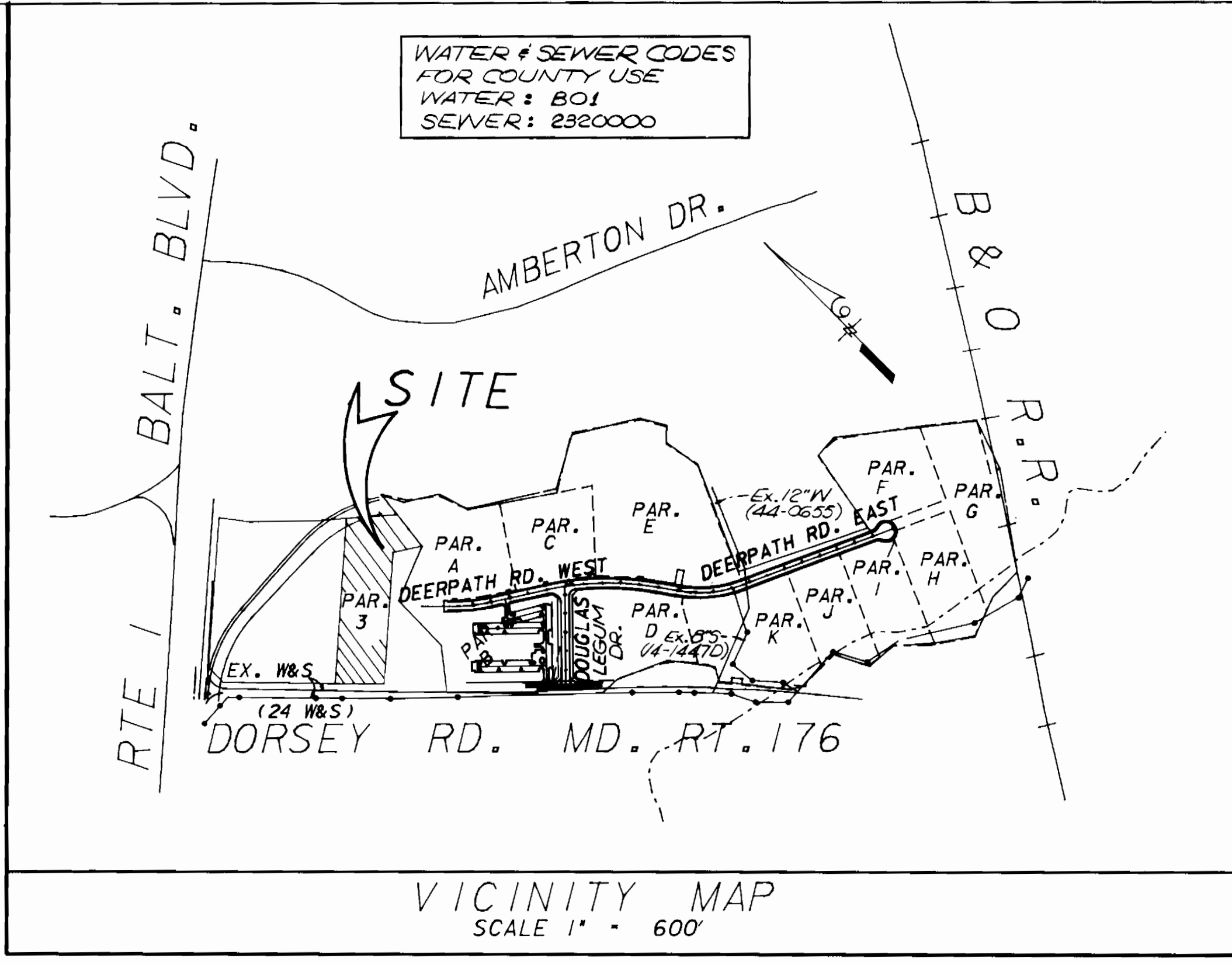
B.M.#2 ELEV. 170.04
 RR SPIKE IN N.E. SIDE OF BG #1 R.P. #1
 #371846 ON SITE 3 1/2' N.E. & 2' S.E. OF
 SW. CORNER OF SITE, .2' ABOVE
 GROUND.



CONSTRUCT WATER & SEWER CONNECTIONS IN TRENCH IN DORSEY ROAD. UTILIZE MSHA STD. 104.03 TYPICAL FLAGGING OPERATION. USE PAVING & SHOULDERS TWO LANE ROAD & MSHA STD. 104.10 TYPICAL SHOULDER WORK SITE WITHIN 15 FT. OF EDGE OF PAVEMENT. THE TRENCH AND PAVING ARE TO BE MADE IN ACCORDANCE WITH MSHA STD. 7-101 REPAIRING PAVEMENT OPENINGS FOR UTILITY TRENCHES.

HENRY N. BINDER
 L. 308 F. 531

PLAN SCALE: 1" = 50'



WATER & SEWER CODES
 FOR COUNTY USE
 WATER: 801
 SEWER: 2320000

VICINITY MAP
 SCALE 1" = 600'

GENERAL NOTES

- APPROXIMATE LOCATION OF EXISTING MAINS ARE SHOWN. THE CONTRACTOR SHALL TAKE ALL NECESSARY PRECAUTIONS TO PROTECT EXISTING MAINS AND SERVICES AND MAINTAIN UNINTERRUPTED SUPPLY. ANY DAMAGE INCURRED SHALL BE REPAIRED IMMEDIATELY TO THE SATISFACTION OF THE ENGINEER AT THE CONTRACTOR'S EXPENSE.
- ALL HORIZONTAL CONTROLS ARE BASED ON MARYLAND STATE COORDINATES.
- ALL VERTICAL CONTROLS ARE BASED ON U.S.G.S. DATUM.
- ALL PIPE ELEVATIONS SHOWN ARE INVERT ELEVATIONS.
- CLEAR ALL UTILITIES BY A MINIMUM OF 6". CLEAR ALL POLES BY 2'-0" MINIMUM OR TUNNEL AS REQUIRED.
- FOR DETAILS NOT SHOWN ON THE DRAWINGS, AND FOR MATERIALS AND CONSTRUCTION METHODS, USE HOWARD COUNTY DESIGN MANUAL, VOLUME IV, STANDARD SPECIFICATIONS AND DETAILS FOR CONSTRUCTION. THE CONTRACTOR SHALL HAVE A COPY OF VOLUME IV ON THE JOB.
- WHERE TEST PITS HAVE BEEN MADE ON EXISTING UTILITIES, THEY ARE NOTED BY THE SYMBOL AT THE LOCATION OF THE TEST PIT. A NOTE OR NOTES CONTAINING THE RESULTS OF THE TEST PIT OR PITS IS INCLUDED ON THE DRAWINGS. EXISTING UTILITIES IN THE VICINITY OF THE PROPOSED WORK FOR WHICH TEST PITS HAVE NOT BEEN MADE SHALL BE LOCATED BY THE CONTRACTOR TWO WEEKS IN ADVANCE OF CONSTRUCTION OPERATIONS AT HIS OWN EXPENSE.
- CONTRACTOR SHALL NOTIFY THE FOLLOWING UTILITIES OR AGENCIES AT LEAST FIVE WORKING DAYS BEFORE STARTING WORK SHOWN ON THESE PLANS.

| | |
|------------------------------------|-------------------------------------|
| STATE HIGHWAY ADMINISTRATION | 531-5533 |
| BALTIMORE GAS & ELECTRIC CO. | CONTRACTOR SERVICE 561-2585 |
| BALTIMORE GAS & ELECTRIC CO. | UNDERGROUND DAMAGE CONTROL 234-5621 |
| BALTIMORE GAS & ELECTRIC CO. | TROUBLE SHOOTING 288-9013 |
| MISS UTILITY | 1-800-257-7777 |
| COLONIAL PIPELINE CO. | 795-1390 |
| BUREAU OF UTILITIES, HOWARD COUNTY | 992-2366 |
| DEPARTMENT OF PUBLIC WORKS | 992-2366 |
- TREES AND SHRUBS ARE TO BE PROTECTED FROM DAMAGE TO MAXIMUM EXTENT. TREES AND SHRUBS LOCATED WITHIN THE CONSTRUCTION STRIP ARE NOT TO BE REMOVED OR DAMAGED BY THE CONTRACTOR.
- CONTRACTOR SHALL REMOVE TREES, STUMPS AND ROOTS ALONG LINE OF EXCAVATION.
- ALL WATER MAINS TO BE D.I.P. UNLESS OTHERWISE NOTED.
- TOPS OF ALL WATER MAINS TO HAVE A MINIMUM OF 3-1/2" COVER UNLESS OTHERWISE NOTED.
- VALVES ADJACENT TO TEES SHALL BE STRAPPED TO TEES.
- ALL FITTINGS SHALL BE BUTTRESSED OR ANCHORED WITH CONCRETE IN ACCORDANCE WITH THE STANDARD DETAILS UNLESS OTHERWISE PROVIDED FOR ON THE DRAWINGS.
- FIRE HYDRANTS SHALL BE SET TO THE BURY LINE ELEVATIONS SHOWN ON THE DRAWINGS. ALL FIRE HYDRANTS SHALL BE STRAPPED AND BUTTRESSED WITH CONCRETE IN ACCORDANCE WITH STANDARD DETAILS. SOIL AROUND THE FIRE HYDRANT SHALL BE COMPACTED IN ACCORDANCE WITH SECTION 1003 OF THE STANDARD SPECIFICATIONS.
- THE CONTRACTOR SHALL NOT OPERATE ANY WATER MAIN VALVES ON THE EXISTING WATER SYSTEM.
- ALL WATER HOUSE CONNECTIONS SHALL BE FOR AN INSIDE METER SETTING, UNLESS OTHERWISE NOTED.
- EXTEND PIPE AS NECESSARY TO INSTALL PLUG FOR BLOCKING WHERE WATER MAINS END WITH VALVES.
- ALL SEWER MAINS SHALL BE C.S.P.X., D.I.P., V.C.P.X., A.C.P., CLASS 2400 OR P.V.C. UNLESS OTHERWISE NOTED.
- THE CONTRACTOR SHALL PROVIDE A JOINT IN ALL SEWER MAINS WITHIN 2'-0" OF EXTERIOR MANHOLE WALL.
- ALL MANHOLES SHALL BE 4'-0" INSIDE DIAMETER UNLESS OTHERWISE NOTED.
- ORIGINAL GROUND OVER WATER AND SEWER WAS TAKEN FROM AERIAL PHOTOGRAPHY PREPARED BY GREENHORNE & O'MARA, INC. AND VERIFIED BY FIELD SURVEY IN NOVEMBER 1985.
- SPRINKLER RISERS AND 8" VALVES AND INTERFERABLE: 80, ARTICLE 15 AND DETAILS SHOWN ON THIS PLAN.
- CLEAR ALL UTILITIES AND 8" VALVES AND INTERFERABLE: 80, ARTICLE 15 AND DETAILS SHOWN ON THIS PLAN.
- SERVICE CLAMPS ARE TO HAVE STAINLESS STEEL STRAPS.

REVIEWED FOR HOWARD S.C.D. AND MEETS TECHNICAL REQUIREMENTS.
John H. Hahn 5-18-87
 U.S. SOIL CONSERVATION SERVICE DATE

NO. OF WHC: 2
 NO. OF LOTS: 1

WATER & SEWER CODE FOR COUNTY USE
 WATER: 801
 SEWER: 2320000

SEDIMENT CONTROL MEASURES FOR THIS CONTRACT WILL BE IMPLEMENTED IN ACCORDANCE WITH SECTION 219 OF THE STANDARD SPECIFICATION, AND SITE PLANS SDP-87-118

BEFORE BEGINNING CONSTRUCTION, CONTACT "MISS UTILITY" AT 1-800-257-7777 AT LEAST 48 HOURS PRIOR TO CONSTRUCTION

DEPARTMENT OF PUBLIC WORKS
 HOWARD COUNTY, MARYLAND
 6-1-87
 DIRECTOR OF PUBLIC WORKS
Robert H. Mammone 5-27-87
 CHIEF, BUREAU OF UTILITIES DATE

GREENHORNE & O'MARA, INC.
 2 RESEARCH PLACE ROCKVILLE, MD. 20850
 PHONE (301) 948-0900
 CHIEF, BUREAU OF ENGINEERING DATE
Richard J. Faria 5-28-87
 CHIEF, LAND DEVELOPMENT DIVISION DATE

DESIGN: JWC/JDA
 DRN: JDA/um
 CHK: RHM
 DATE: NOV, 86
 BY: JDA
 NO. 1
 REVISIONS
 DATE: 9/1/87
 ADDED OPEN CUT CONSTR IN DORSEY ROAD

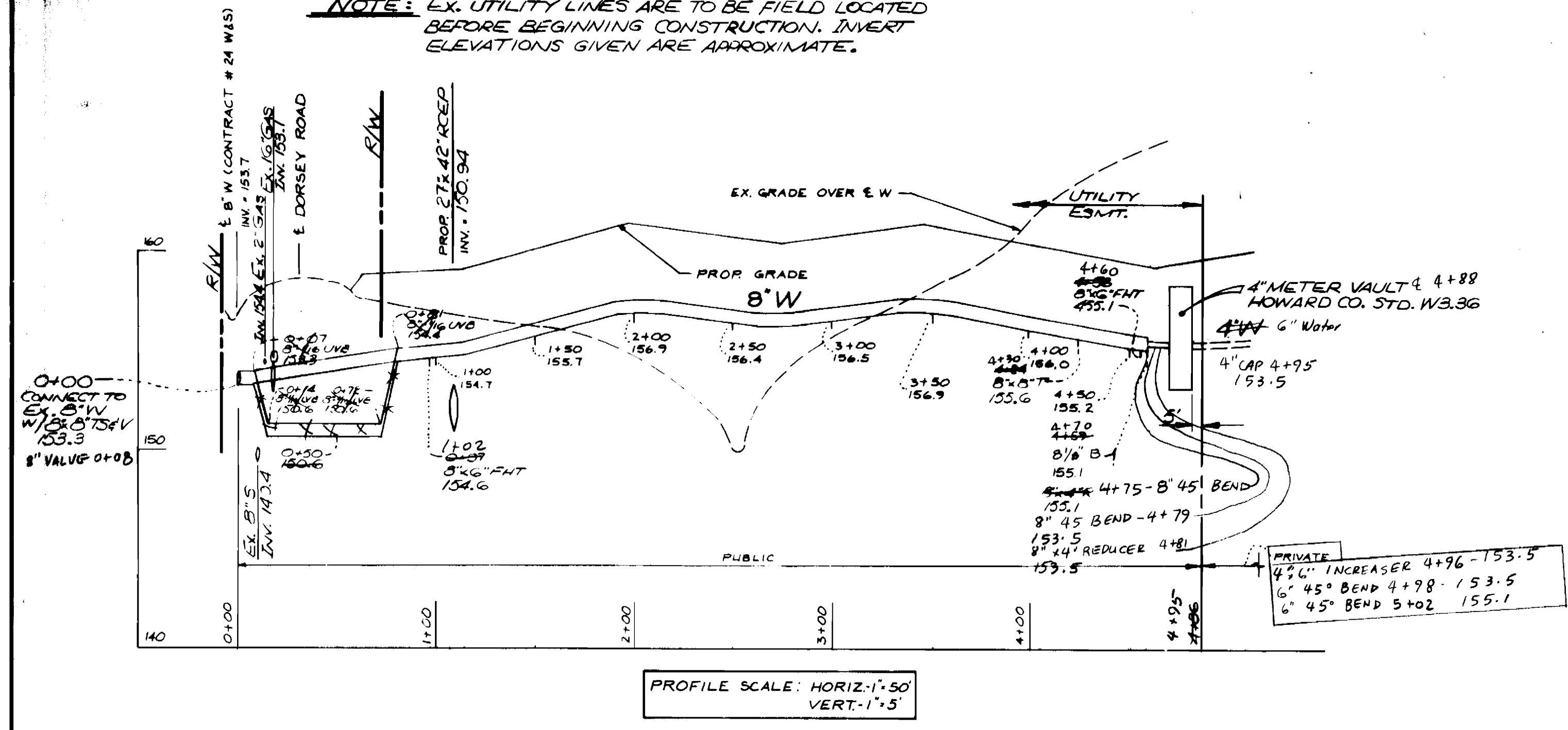
600' SCALE MAP NO. 37
 BLOCK NO.

CONTRACT #14-1630-D
DORSEY BUSINESS CENTER
PARCEL 'L' SECTION 2
BEST WESTERN HOTEL
 FIRST ELECTION DISTRICT
 HOWARD CO., MARYLAND
 SCALE AS SHOWN
 SHEET 1 OF 2

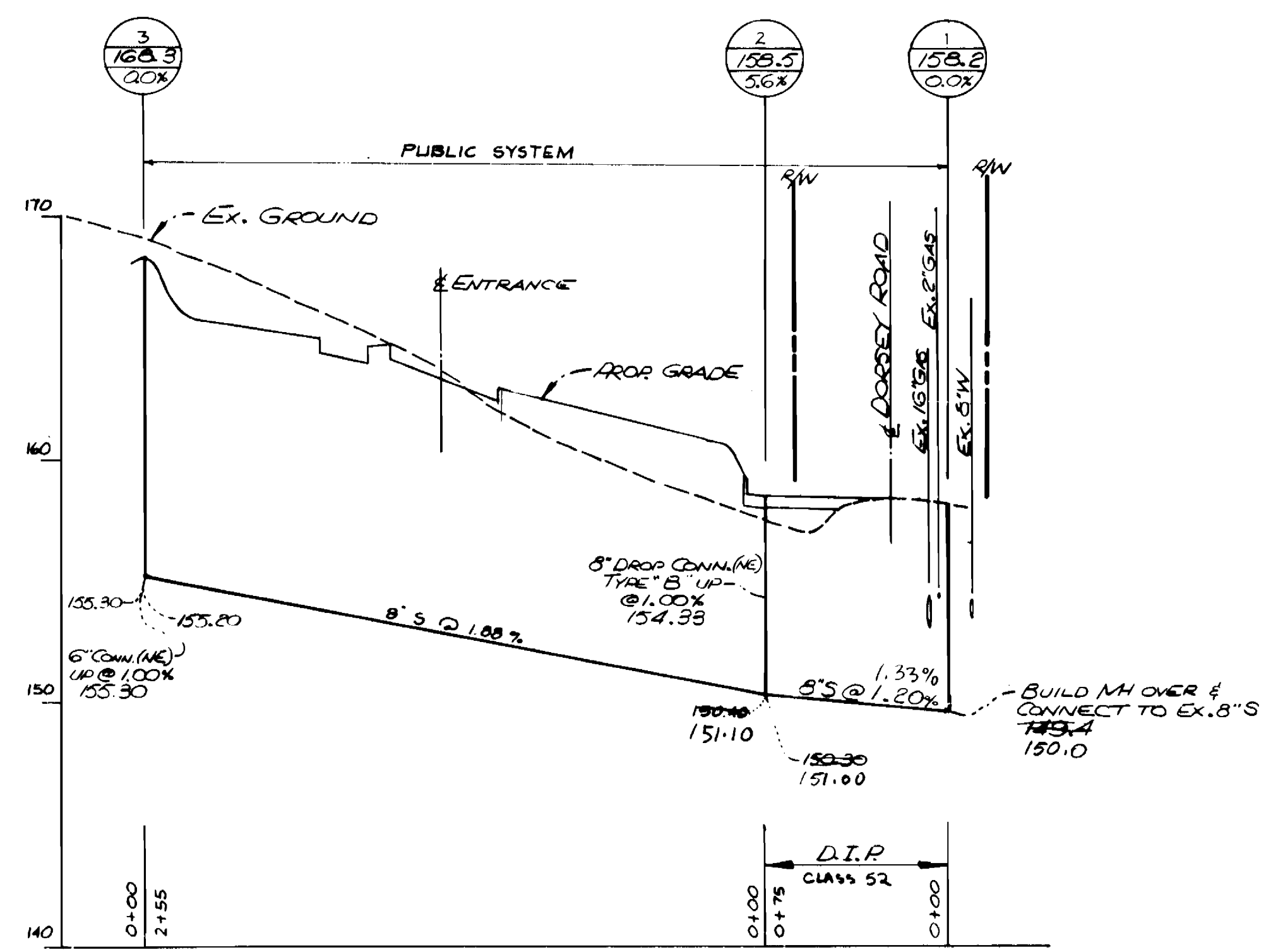
SAW ASBUILTS

| ITEM | QUANTITIES | | MATERIAL / SUPPLIER | |
|-------------------|------------|----------|-------------------------|-----------------|
| | BID | AS-BUILT | | |
| 8" WATER | LF 470 | 490 | GRIFFIN PIPE CO. D.I.P. | CL 52 |
| 6" WATER | LF 25 | 30 | GRIFFIN PIPE CO. | |
| 8" X 8" T.S.B.V. | EA 1 | 1 | CLOW - M.H. VALVE CO. | MERO |
| 6" VALVES | EA 2 | 2 | M.H. VALVE CO. | M.3 GATE VALVES |
| 1.5" FIRE HYDRANT | EA 1 | 1 | KENNEDY (K.B.) | |
| 4.5" FIRE HYDRANT | EA 1 | 1 | KENNEDY (K.B.) | |
| 8" X 6" FHT | EA 2 | 2 | GRIFFIN PIPE CO. | DIP CL 52 |
| BORE & JACK | EA 2 | 0 | ELIMINATED | |
| 8" I.B.B. | EA 1 | 1 | GRIFFIN PIPE CO. | DIP CL 52 |
| 8" 1/2" UVB | EA 2 | 0 | ELIMINATED | |
| 8" 1/2" UVB | EA 2 | 0 | ELIMINATED | |
| 8" S.W.C. | EA 2 | 0 | ELIMINATED | |
| 4" DIA. MANHOLE | LF 330 | 324 | AMERICAN PIPE CO. | PVC SDR-35 |
| 8" X 6" TEE | EA 1 | 3 | ATLANTIC PRECAST | |
| 6" VALVE | EA 1 | 1 | GRIFFIN PIPE CO. | DIP CL 52 |
| 4" METER VAULT | EA 1 | 1 | M.H. VALVE CO. M.3 | GATE VALVES |
| 8" CAP | EA 1 | 1 | SMITH MIDLAND PRECAST | |
| 8" 45° BENDS | EA 0 | 2 | GRIFFIN PIPE CO. | DIP CL 52 |

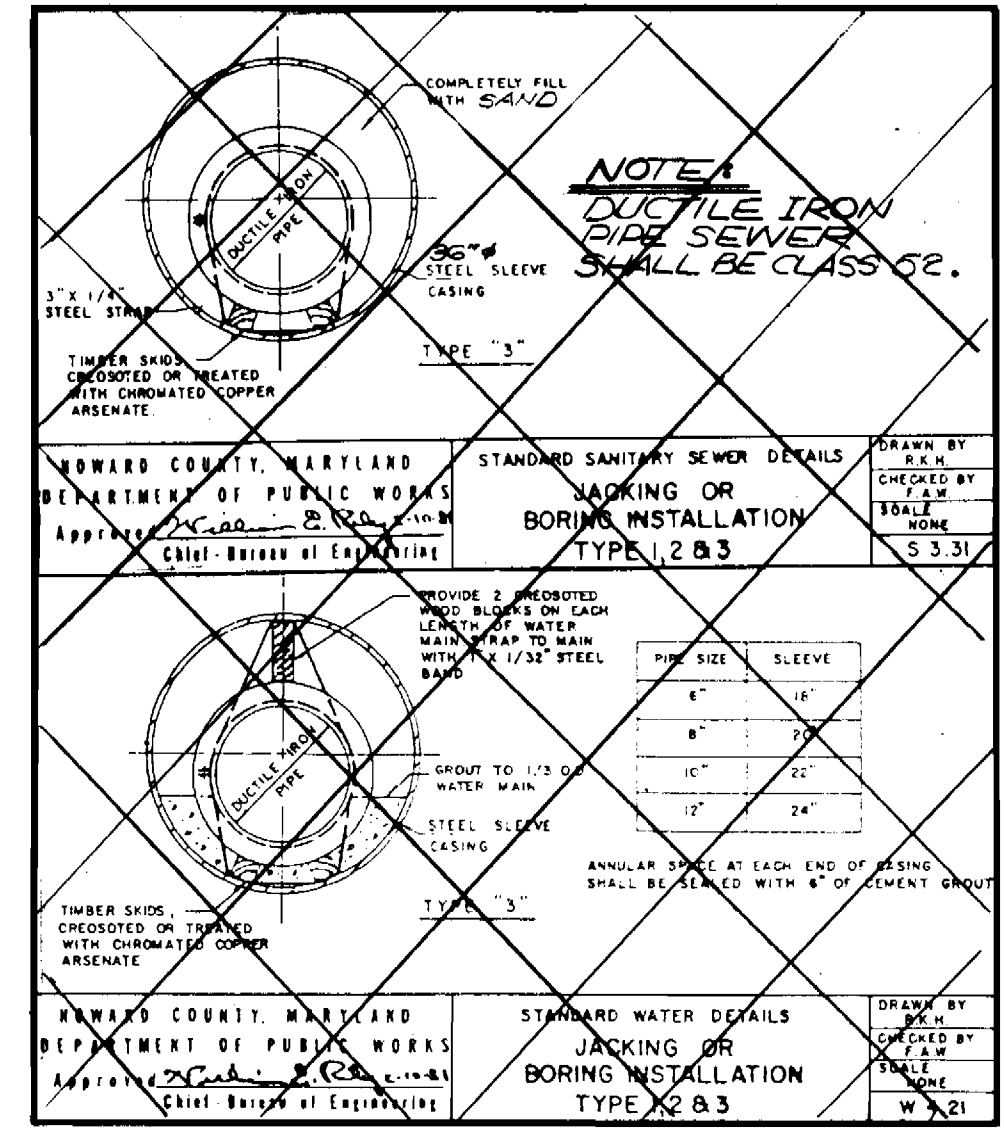
NOTE: EX. UTILITY LINES ARE TO BE FIELD LOCATED BEFORE BEGINNING CONSTRUCTION. INVERT ELEVATIONS GIVEN ARE APPROXIMATE.



PROFILE SCALE: HORIZ. 1"=50' VERT. 1"=5'



PROFILE SCALE: HORIZ. 1"=50' VERT. 1"=5'



REV. LEWED FOR HOWARD S.C.D. AND MEETS TECHNICAL REQUIREMENTS.

DATE: 5-18-87

NO. OF WHC: 2
NO. OF LOTS: 1

WATER & SEWER CODE FOR COUNTY USE WATER SEWER

SEDIMENT CONTROL MEASURES FOR THIS CONTRACT WILL BE IMPLEMENTED IN ACCORDANCE WITH SECTION 219 OF THE STANDARD SPECIFICATION. AND SITE PLANS SDP-87-118

BEFORE BEGINNING CONSTRUCTION, CONTACT "MISS UTILITY" AT 1-800-257-7777 AT LEAST 48 HOURS PRIOR TO CONSTRUCTION

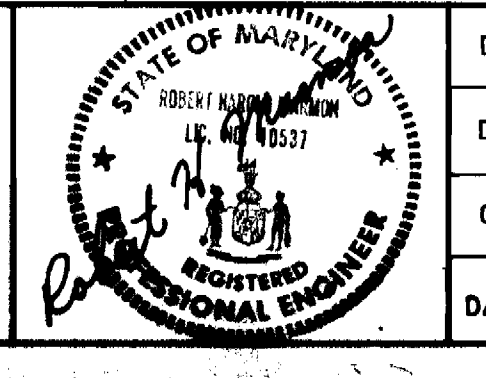
DEPARTMENT OF PUBLIC WORKS
HOWARD COUNTY, MARYLAND

DATE: 5-27-87

CHIEF BUREAU OF ENGINEERING

ENGINEERS-ARCHITECTS-PLANNERS-SCIENTISTS-SURVEYORS-PHOTOGRAMMETRISTS

GREENHORNE & O'MARA, INC.
2 RESEARCH PLACE ROCKVILLE, MD. 20850
PHONE (301) 948-0900



| | |
|-------------------|--|
| DESIGNER: JMC/JDD | DATE: Nov, 86 |
| DRN: JDP/um | BY NO. |
| CHK: RHM | REVISIONS |
| JDP / | ADDED OPEN CUT CONSTR. IN DORSEY ROAD 6/1/87 |

PLAN FOR WATER MAIN AND SEWER EXTENSION

600' SCALE MAP NO. 37

CONTRACT #14-1630-D

DORSEY BUSINESS CENTER
PARCEL "L" SECTION 2
BEST WESTERN HOTEL
FIRST ELECTION DISTRICT
HOWARD COUNTY, MARYLAND

SCALE AS SHOWN
SHEET 2 OF 2