
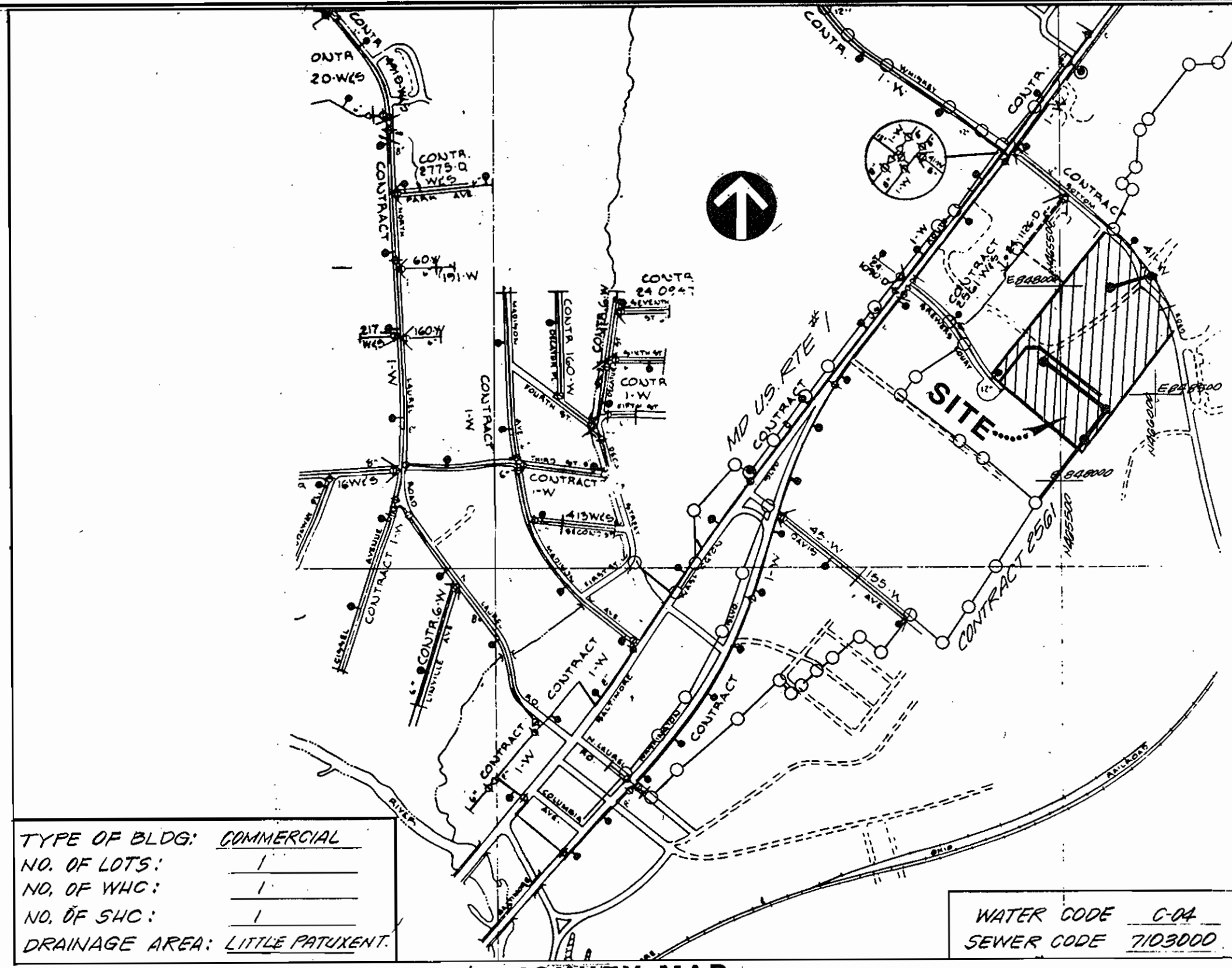
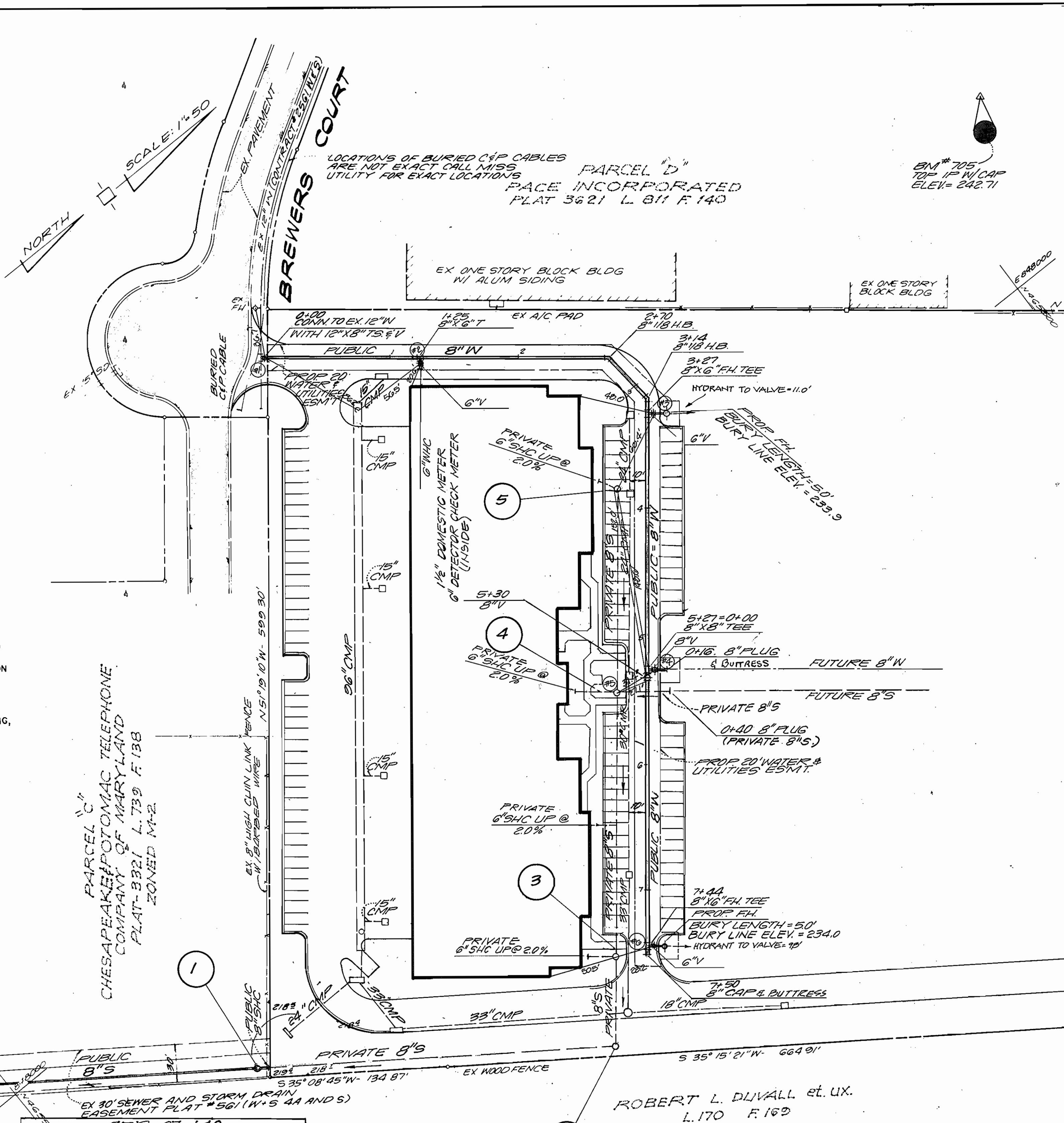


**GENERAL NOTES**

- APPROXIMATE LOCATION OF EXISTING MAINS ARE SHOWN. THE CONTRACTOR SHALL TAKE ALL NECESSARY PRECAUTIONS TO PROTECT EXISTING MAINS AND SERVICES AND MAINTAIN UNINTERRUPTED SUPPLY. ANY DAMAGE INCURRED SHALL BE REPAIRED IMMEDIATELY TO THE SATISFACTION OF THE ENGINEER AT THE CONTRACTOR'S EXPENSE.
- ALL HORIZONTAL CONTROLS ARE BASED ON MARYLAND STATE COORDINATES.
- ALL VERTICAL CONTROLS ARE BASED ON U.S.G.S. DATA.
- ALL PIPE ELEVATIONS SHOWN ARE INVERT ELEVATIONS.
- CLEAR ALL UTILITIES BY A MINIMUM OF 1'-0"
- FOR DETAILS NOT SHOWN ON THE DRAWINGS, AND FOR MATERIALS AND CONSTRUCTION METHODS, USE HOWARD COUNTY DESIGN MANUAL, VOLUME IV, STANDARD SPECIFICATIONS AND DETAILS FOR CONSTRUCTION. THE CONTRACTOR SHALL HAVE A COPY OF VOLUME IV ON THE JOB.
- WHERE TEST PITS HAVE BEEN MADE ON EXISTING UTILITIES, THEY ARE NOTED BY THE SYMBOL  AT THE LOCATION OF THE TEST PIT. A NOTE OR NOTES CONTAINING THE RESULTS OF THE TEST PIT OR PITS IS INCLUDED ON THE DRAWINGS. EXISTING UTILITIES IN THE VICINITY OF THE PROPOSED WORK FOR WHICH TEST PITS HAVE NOT BEEN DUG SHALL BE VERIFIED BY THE CONTRACTOR TO HIS OWN SATISFACTION. ANY DAMAGE TO EXISTING FACILITIES DUE TO THE CONTRACTOR'S NEGLIGENCE SHALL BE REPAIRED AT THE CONTRACTOR'S EXPENSE.
- CONTRACTOR SHALL NOTIFY THE FOLLOWING UTILITIES OR AGENCIES AT LEAST FIVE WORKING DAYS BEFORE STARTING WORK SHOWN ON THESE PLANS:  
 STATE HIGHWAY ADMINISTRATION: 531-5533  
 BALTIMORE GAS & ELECTRIC CO. - CONTRACTOR SERVICES: 561-2585  
 BALTIMORE GAS & ELECTRIC CO. - UNDERGROUND DAMAGE CONTROL: 234-5621  
 BALTIMORE GAS & ELECTRIC CO. - TROUBLE SHOOTING: 298-9013  
 MISS UTILITY: 1-559-0100  
 COLONIAL PIPELINE COMPANY: 795-1390  
 BUREAU OF UTILITIES, HOWARD COUNTY DEPARTMENT OF PUBLIC WORKS: 992-2366
- TREES AND SHRUBS ARE TO BE PROTECTED FROM DAMAGE TO MAXIMUM EXTENT. TREES AND SHRUBS LOCATED WITHIN THE CONSTRUCTION STRIP ARE NOT TO BE REMOVED OR DAMAGED BY THE CONTRACTOR.
- CONTRACTOR SHALL REMOVE TREES, STUMPS AND ROOTS ALONG LINE OF EXCAVATION. PAYMENT FOR SUCH REMOVAL SHALL BE INCLUDED IN THE UNIT PRICE BID FOR CONSTRUCTION OF THE MAIN.
- ALL WATER MAINS TO BE D.I.P. CLASS 52 UNLESS OTHERWISE NOTED.
- TOPS OF ALL WATER MAINS TO HAVE A MINIMUM OF 4'-0" COVER UNLESS OTHERWISE NOTED.
- VALVES ADJACENT TO TEES SHALL BE STRAPPED TO TEES.
- ALL FITTINGS SHALL BE BUTTRESSED OR ANCHORED WITH CONCRETE IN ACCORDANCE WITH THE STANDARD DETAILS UNLESS OTHERWISE PROVIDED FOR ON THE DRAWINGS.
- FIRE HYDRANTS SHALL BE SET TO THE BURY LINE ELEVATIONS SHOWN ON THE DRAWINGS. ALL FIRE HYDRANTS SHALL BE STRAPPED AND BUTTRESSED WITH CONCRETE IN ACCORDANCE WITH STANDARD DETAILS. SOIL AROUND THE FIRE HYDRANT SHALL BE COMPACTED IN ACCORDANCE WITH SECTION 1003 AND 1008 OF THE STANDARD SPECIFICATIONS.
- THE CONTRACTOR SHALL NOT OPERATE ANY WATER MAIN VALVES ON THE EXISTING WATER SYSTEM.
- ALL WATER HOUSE CONNECTIONS SHALL BE FOR INSIDE METER SETTING, UNLESS OTHERWISE NOTED ON THE PLANS OR IN THE SPECIFICATIONS. (STD. DETAIL W.3.21).



VICINITY MAP  
SCALE: 1"=600'

- WATER MAINS AND WATER HOUSE CONNECTION LINES MUST BE PLACED SO AS TO HAVE AT LEAST ONE (1) FOOT SEPARATION FROM THE SEWER MAIN OR SEWER HOUSE CONNECTION AS THEY PASS ABOUT IT.
- MANHOLES DESIGNATED W.T. IN PLAN AND PROFILE SHALL HAVE WATER-TIGHT FRAME AND COVERS STANDARD DETAIL 65.52 WHERE WATER-TIGHT MANHOLE FRAME AND COVER IS USED, SET TOP OF FRAME 1'-6" ABOVE FINISHED GRADE UNLESS OTHERWISE NOTED ON THE DRAWINGS.
- ALL SEWER MAINS SHALL BE C.S.P.X., R.C.S.P., V.C.P.X., A.C.P. CLASS 2400 OR P.V.C. UNLESS OTHERWISE NOTED.
- THE CONTRACTOR SHALL PROVIDE A JOINT IN ALL SEWER MAINS WITHIN 2'-0" OF EXTERIOR MANHOLE WALL.
- ALL MANHOLES SHALL BE 4'-0" INSIDE DIAMETER UNLESS OTHERWISE NOTED.
- MANHOLES SHOWN WITH 12" AND 16" WALLS ARE FOR BRICK MANHOLES ONLY.
- MANHOLES LOCATED WITHIN PROPOSED ROADWAY SHALL HAVE STANDARD HEAVY TRAFFIC MANHOLE FRAME AND COVER, STANDARD DETAIL 65.51.

SEDIMENT CONTROL MEASURES FOR THIS CONTRACT WILL BE IMPLEMENTED IN ACCORDANCE WITH SECTION 219 OF THE HOWARD COUNTY DESIGN MANUAL AND STANDARDS AND SPECIFICATIONS FOR SOIL EROSION AND SEDIMENT CONTROL IN DEVELOPING AREAS AND ALSO AS SHOWN ON THE GRADING AND SEDIMENT CONTROL PLAN SDR-87-140

REVIEWED FOR HOWARD COUNTY SOIL CONSERVATION DISTRICT AND MEETS TECHNICAL REQUIREMENTS.

*James McMillan* 8-17-87  
US SOIL CONSERVATION SERVICE DATE

THIS DEVELOPMENT PLAN IS APPROVED FOR EROSION AND SEDIMENT CONTROL BY HOWARD SOIL CONSERVATION DISTRICT.

APPROVED:  
*Stephen L. Anle* 8/17/87  
HOWARD SOIL CONSERVATION DISTRICT DATE

QUANTITIES			
ITEM	ESTIMATED	AS-BUILT	SUPPLIER
MANHOLES	1 EA	1 EA	ATLANTIC PRECAST
8" SEWER	306 LF	306 LF	SDR#35 CHARLOTTE PIPE
FIRE HYDRANT	2 EA	2 EA	MUELLER "A-423
6" (EXCLUDING F.H. VALVES)	1 EA	1 EA	MUELLER
8" VALVES	2 EA	2 EA	MUELLER
8" WATER	762 LF	750 LF	D.I.P. CLASS 52 (ATLANTIC)
12" X 8" T&E V	1 EA	1 EA	MUELLER (SLEEVES 1417, VALVE 1407)

DEPARTMENT OF PUBLIC WORKS,  
HOWARD COUNTY, MARYLAND

*Thomas J. ...* 8-24-87  
DIRECTOR OF PUBLIC WORKS DATE

*W. ...* 8-22-87  
CHIEF, BUREAU OF UTILITIES DATE

*W. ...* 8-24-87  
CHIEF, BUREAU OF ENGINEERING DATE

*W. ...* 8-24-87  
CHIEF, LAND DEVELOPMENT DIVISION DATE

**VIA**  
VIA INCORPORATED  
8200 GREENBROOK DRIVE SUITE 400  
MCLEAN, VIRGINIA 22102  
(703) 442-7180  
ENGINEERS • PLANNERS • LANDSCAPE ARCHITECTS • SURVEYORS

DES: RAN  
DRN: RAN  
CHK: RAN  
DATE: 4-6-87

BY NO REVISION DATE

AS BUILTS

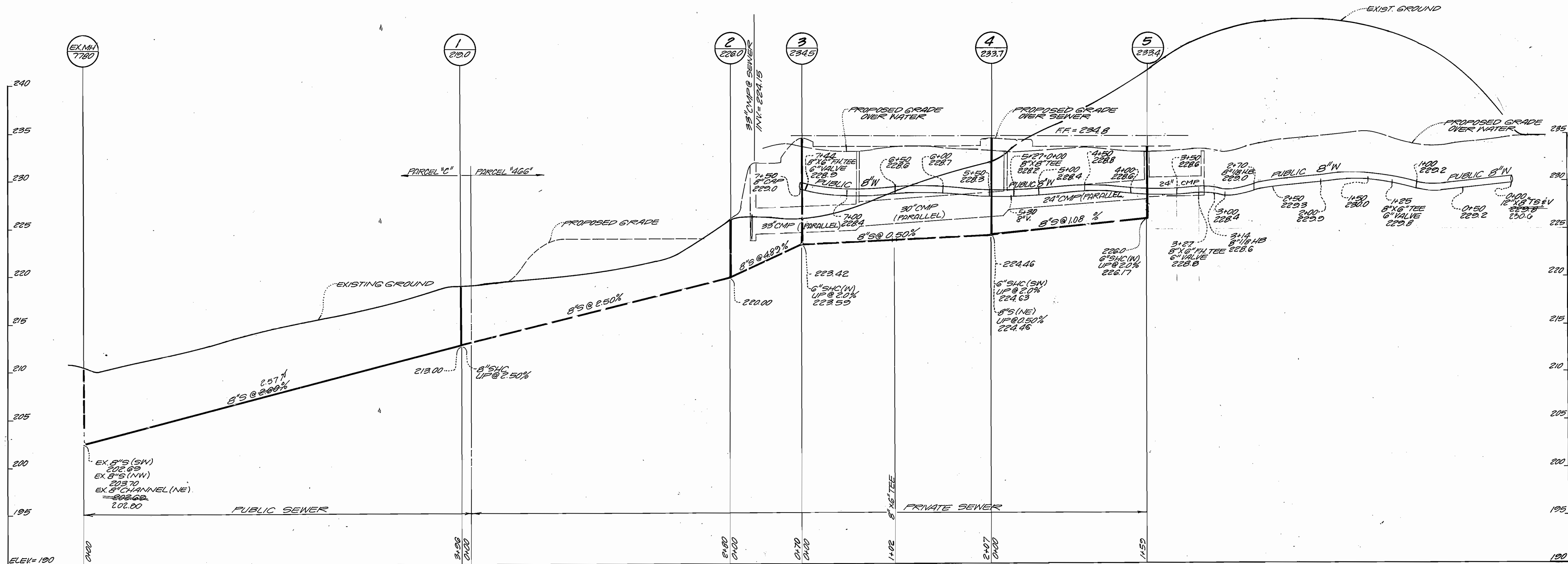
CONTRACT NO. 24-1625-D  
WATER AND SEWER MAIN  
PLAN

600' SCALE MAP NO. 50 BLOCK NO.

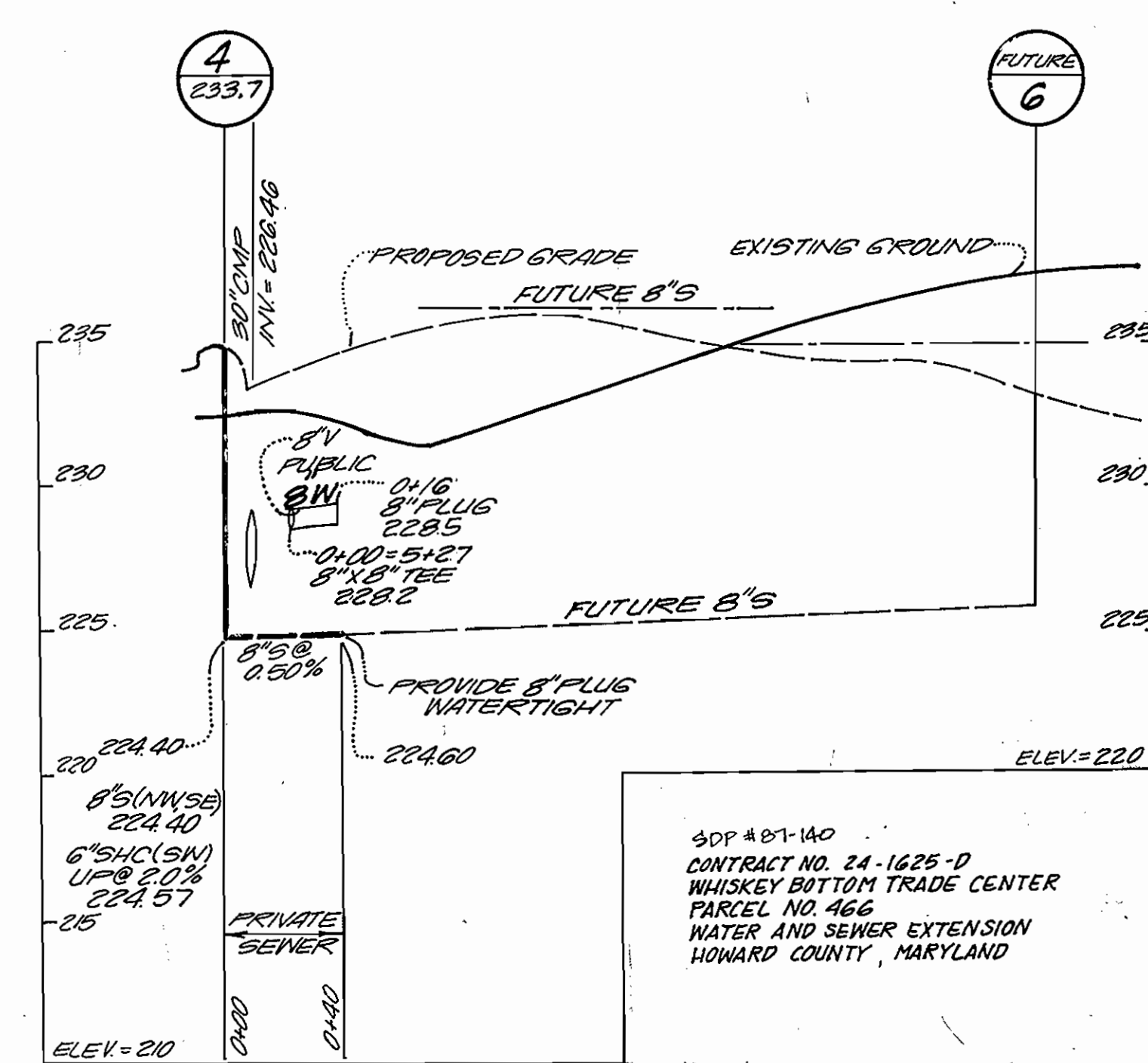
METRO INDUSTRIAL PARK  
PARCEL #466  
WHISKEY BOTTOM TRADE CENTER  
SIXTH ELECTION DISTRICT  
HOWARD COUNTY, MARYLAND

SCALE AS SHOWN  
SHEET 1 OF 2

AS-BUILT 4-21-88



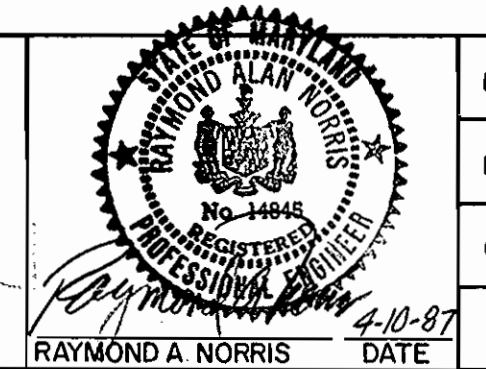
SCALE: HORIZ 1"=50'  
VERT 1"=5'



DEPARTMENT OF PUBLIC WORKS  
HOWARD COUNTY, MARYLAND

Director of Public Works: [Signature] 3/24/87  
 Chief, Bureau of Engineering: [Signature] 3/24/87  
 Chief, Bureau of Utilities: [Signature] 3/24/87  
 Chief, Land Development Division: [Signature] 3/24/87

**VIA** VIKI INCORPORATED  
 9200 GREENSBORO DRIVE SUITE 400  
 MCLEAN, VIRGINIA 22102  
 (703) 442-7300  
 ENGINEERS • PLANNERS • LANDSCAPE ARCHITECTS • SURVEYORS



DES: REV				
DRN: RWS				
CHK: RAN				
DATE: 4-6-87	CN 1	AS BUILT	4-21-87	
BY NO.		REVISION	DATE	

CONTRACT NO. 24-1625-D  
WATER AND SEWER MAIN

PROFILES

600' SCALE MAP NO. 50 BLOCK NO.

METRO INDUSTRIAL PARK  
 PARCEL #466  
 WHISKEY BOTTOM TRADE CENTER  
 SIXTH ELECTION DISTRICT  
 HOWARD COUNTY, MARYLAND

SCALE AS SHOWN  
 SHEET 2 OF 2