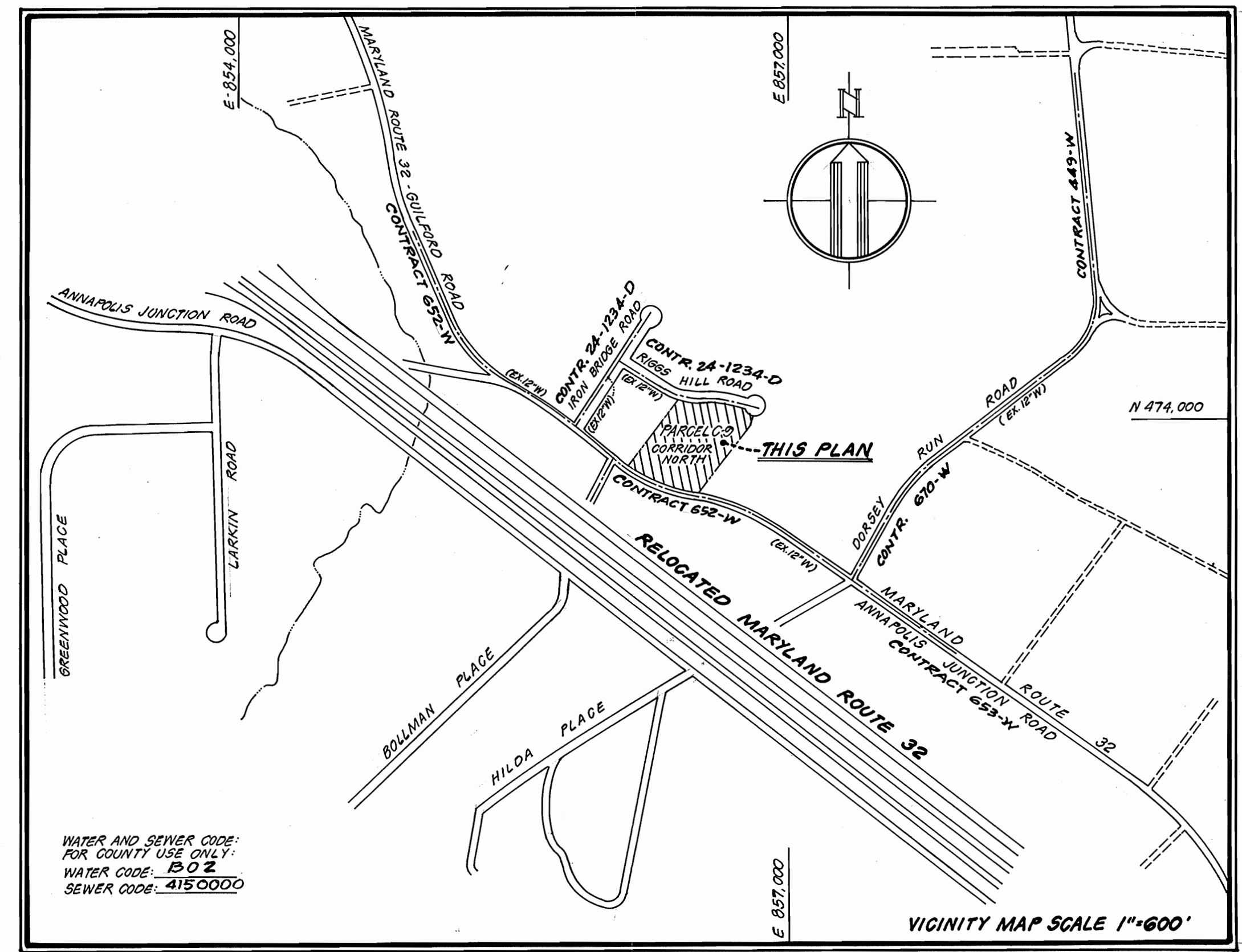


**BENCH MARK "B" ELEVATION 192.01**  
 "X" CUT IN BONNETT BOLT ON FIRE HYDRANT AT  
 NORTHEAST SIDE OF INTERSECTION OF IRON BRIDGE  
 ROAD AND RIGGS HILL ROAD.

**NOTE:**  
 ALL ON-SITE SANITARY SEWERS AND STORM DRAINS  
 ARE PRIVATE SEWERS AND ARE INDICATED FOR  
 INFORMATION ONLY.  
 PROPOSED SANITARY MANHOLES INDICATED THUS: (3)  
 PROPOSED STORM DRAIN STRUCTURES INDICATED THUS: (5)

**PLAN SCALE**  
 1" = 50'



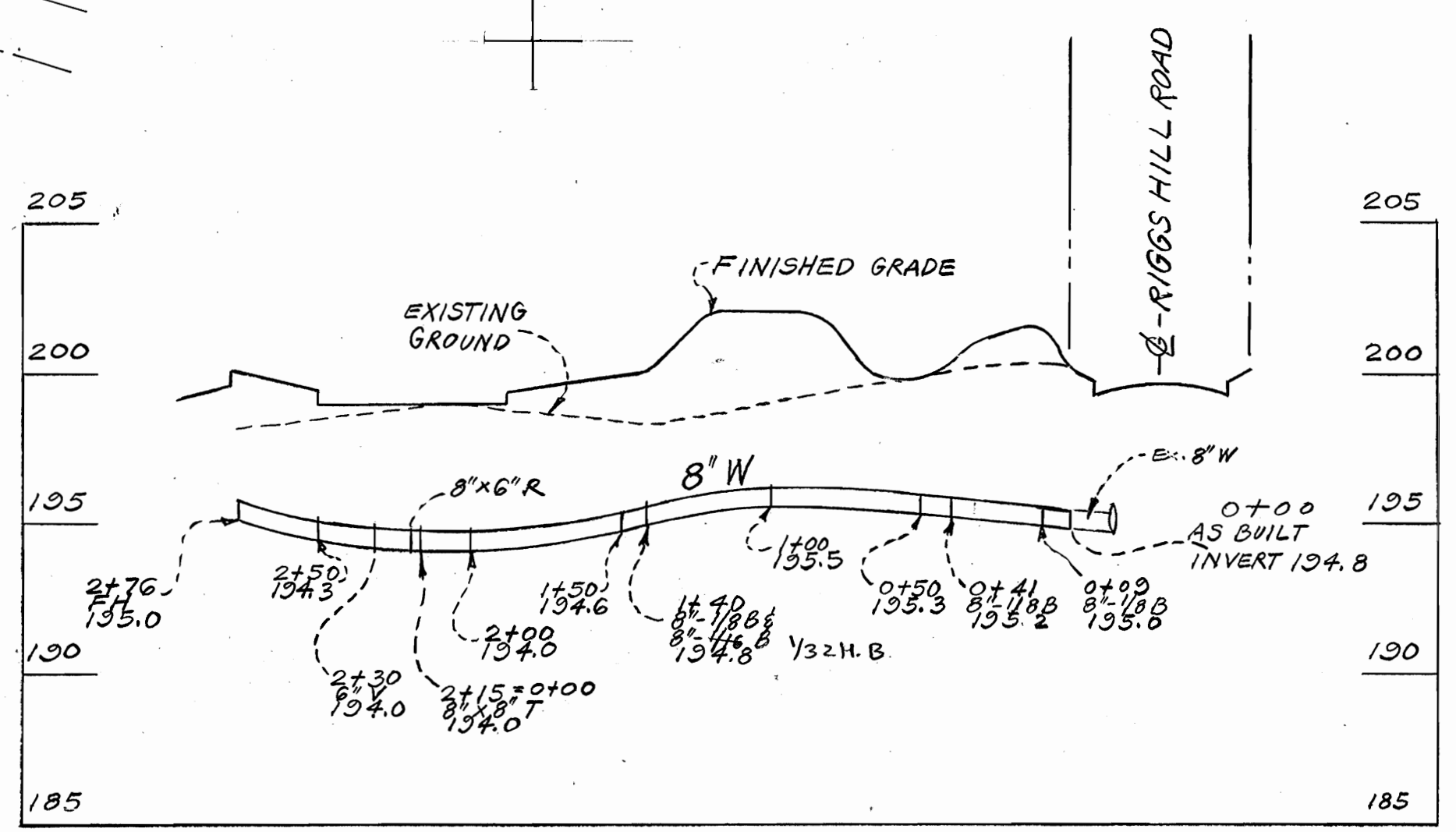
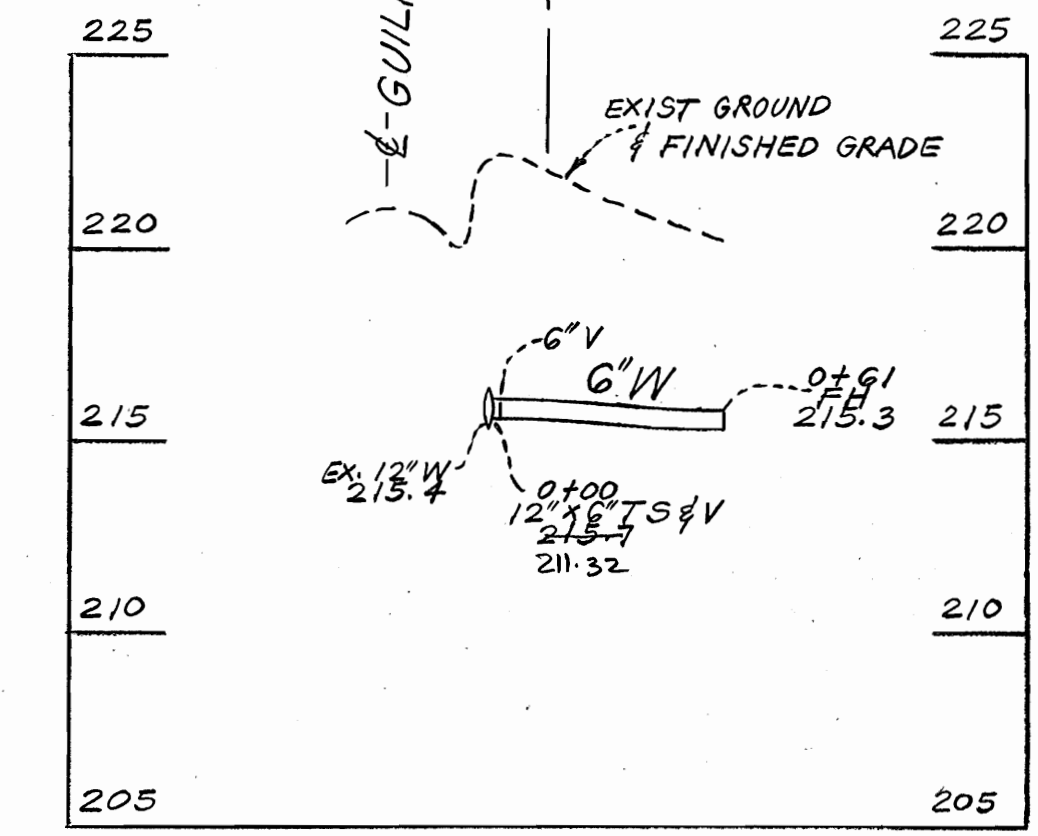
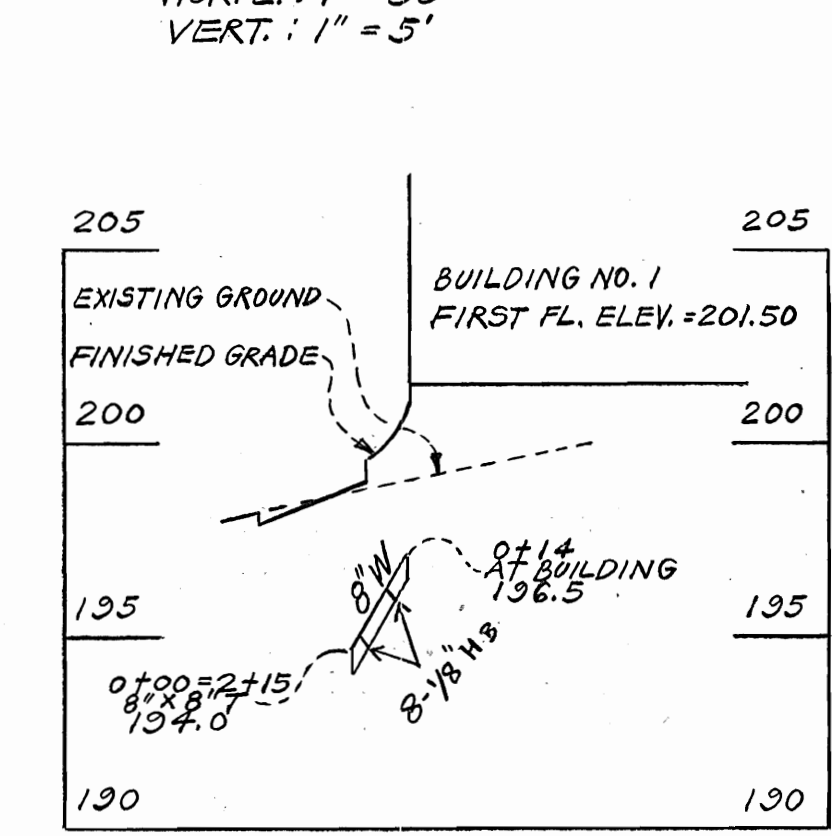
**WATER AND SEWER CODES:**  
 FOR COUNTY USE ONLY:  
 WATER CODE - 150.00  
 SEWER CODE - 415.0000

**TYPE OF BUILDINGS: WAREHOUSE ZONED M-2**  
 NUMBER OF LOTS: 1 PARCEL  
 NUMBER OF WATER HOUSE CONNS.: 1  
 NUMBER OF SEWER HOUSE CONNS.: 1 (EX.)  
 DRAINAGE AREA: LITTLE PATUXENT

**GENERAL NOTES**

- APPROXIMATE LOCATION OF EXISTING MAINS ARE SHOWN. THE CONTRACTOR SHALL TAKE ALL NECESSARY PRECAUTIONS TO PROTECT EXISTING MAINS AND SERVICES AND MAINTAIN UNINTERRUPTED SUPPLY. ANY DAMAGE INCURRED SHALL BE REPAIRED IMMEDIATELY TO THE SATISFACTION OF THE ENGINEER, AT THE CONTRACTOR'S EXPENSE.
- ALL HORIZONTAL CONTROLS ARE BASED ON MARYLAND STATE COORDINATES.
- ALL VERTICAL CONTROLS ARE BASED ON U.S.C. 16.5.
- ALL PIPE ELEVATIONS SHOWN ARE INVERT ELEVATIONS.
- CLEAR ALL UTILITIES BY A MINIMUM OF 6' CLEAR. ALL POLES BY 2'-0" MINIMUM OR TUNNEL AS REQUIRED. ANY COST INCURRED TO THE CONTRACTOR FOR TUNNELING OR BRACING AT POLES SHALL BE INCLUDED IN THE UNIT PRICES BID FOR CONSTRUCTION OF THE MAIN.
- FOR DETAILS NOT SHOWN ON THE DRAWINGS, AND FOR MATERIALS AND CONSTRUCTION METHODS, USE HOWARD COUNTY DESIGN MANUAL, VOLUME II STANDARD SPECIFICATIONS AND DETAILS FOR CONSTRUCTION. THE CONTRACTOR SHALL HAVE A COPY OF VOLUME II ON THE JOB.
- MANHOLES LOCATED WITHIN PROPOSED ROADWAY SHALL HAVE STANDARD HEAVY TRAFFIC MANHOLE FRAME AND COVER, STANDARD DETAIL GS-51.
- CONTRACTOR SHALL NOTIFY THE FOLLOWING UTILITIES OR AGENCIES AT LEAST FIVE (5) WORKING DAYS BEFORE STARTING WORK SHOWN ON THESE PLANS:  
 BALTIMORE GAS AND ELECTRIC CO. - TROUBLE SHOOTING (298-9013)  
 COLONIAL PIPELINE (725-1300)  
 BALTIMORE GAS AND ELECTRIC CO. - UNDERGROUND DAMAGE CONTROL (234-5821) AND CONTRACTOR SERVICES (561-2585)  
 ENGINEERING DAMAGE CONTROL (234-5821)  
 "M&S UTILITIES" (31-588-0000)  
 CHESTERFIELD AND POTOMAC (C12) TELEPHONE COMPANY - (785-9976)  
 BUREAU OF UTILITIES, HOWARD COUNTY (992-2366)
- TREES ARE TO BE PROTECTED FOR DAMAGE TO MAXIMUM EXTENT. TREES LOCATED WITHIN THE CONSTRUCTION STRIP ARE NOT TO BE REMOVED OR DAMAGED BY THE CONTRACTOR.
- CONTRACTOR SHALL REMOVE TREES, STUMPS AND ROOTS ALONG LINE OF EXCAVATION. PAYMENT FOR SUCH REMOVAL SHALL BE INCLUDED IN THE UNIT PRICE BID FOR THE CONSTRUCTION OF THE MAIN.
- FLARE REGULATION "MEN WORKING" AND WARNING SIGNS AS REQUIRED TO COMPLY WITH MARYLAND STATE HIGHWAY ADMINISTRATION MANUAL OF TRAFFIC CONTROL FOR HIGHWAY CONSTRUCTION AND MAINTENANCE OPERATION.
- ALL WATER MAINS TO BE D.I.P. CLASS 52, UNLESS OTHERWISE NOTED.
- TOP OF ALL WATER MAINS HAVE A MINIMUM OF 3'-6" COVER UNLESS OTHERWISE NOTED.
- VALVES ADJACENT TO TREES SHALL BE STRAPPED TO TREES.
- BLOCK ALL FITTINGS WITH CONCRETE.
- BURY LINE ELEVATIONS ON FIRE HYDRANTS SHALL BE SET TO THE ELEVATIONS SHOWN ON THE DRAWINGS. ALL FIRE HYDRANTS SHALL BE STRAPPED AND BUTTRESSED WITH CONCRETE IN ACCORDANCE WITH STANDARD DETAILS SOIL AROUND THE FIRE HYDRANTS TO BE COMPACTED IN ACCORDANCE WITH SECTION 1003 AND 1008 OF THE STANDARD SPECIFICATIONS.
- ALL WATER HOUSE CONNECTIONS SHALL BE FOR AN INSIDE METER SETTINGS.
- THE CONTRACTOR SHALL NOT OPERATE ANY WATER MAIN VALVES ON THE EXISTING SYSTEM.
- WATER MAIN AND WATER HOUSE CONNECTION LINE MUST BE PLACED SO AS TO HAVE AT LEAST ONE (1) FOOT SEPARATION FROM THE SEWER MAIN OR SEWER HOUSE CONNECTION AS THEY PASS ABOUT IT.
- FOR ALL COPPER WATER HOUSE CONNECTIONS, UTILIZE FLARED TIE FITTINGS ONLY.
- ALL FITTINGS SHALL BE BUTTRESSED OR ANCHORED WITH CONCRETE IN ACCORDANCE WITH THE STANDARD DETAILS UNLESS OTHERWISE PROVIDED FOR ON THE DRAWINGS.
- WHERE TEST PITS HAVE BEEN MADE ON EXISTING UTILITIES, THEY ARE NOTED BY THE SYMBOL AT THE LOCATION OF THE TEST PIT. A NOTE OR NOTES CONTAINING THE RESULTS OF THE TEST PIT OR PITS IS INCLUDED ON THE DRAWINGS. EXISTING UTILITIES IN THE VICINITY OF THE PROPOSED WORK FOR WHICH TEST PITS HAVE NOT BEEN DONE SHALL BE IDENTIFIED BY THE CONTRACTOR TO HIS OWN SATISFACTION. ANY DAMAGE TO EXISTING FACILITIES DUE TO THE CONTRACTOR'S NEGLIGENCE SHALL BE REPAIRED AT THE CONTRACTOR'S EXPENSE.

**PROFILE SCALES**  
 HORIZ.: 1" = 50'  
 VERT.: 1" = 5'



**QUANTITIES**

ITEM	ESTIMATED	AS-BUILT	SUPPLIER
8" WATER	215'	229 LF	CL 52, D.I.P. / GRIFFIN
6" WATER	103'	115 LF	CL 52, D.I.P. / GRIFFIN
8" x 8" T	1 EA.	1 EA.	GRIFFIN
FIRE HYDRANTS	2 EA.	2 EA.	US PIPE & FOUNDRY
12" x 6" TS & V	1 EA.	1 EA.	US PIPE & FOUNDRY
6" TAPPING VALVE	1 EA.	1 EA.	" " "

SEDMENT CONTROL MEASURES FOR THIS CONTRACT WILL BE IMPLEMENTED IN ACCORDANCE WITH SECTION 15 OF THE HOWARD COUNTY DESIGN MANUAL AND STANDARDS AND SPECIFICATIONS FOR SOIL EROSION AND SEDIMENT CONTROL IN DEVELOPING AREAS AND ALSO AS SHOWN ON THE GRADING AND SEDIMENT CONTROL PLAN 50P01-99.

REVIEW FOR HOWARD COUNTY SOIL CONSERVATION DISTRICT AND MEETS TECHNICAL REQUIREMENTS

*James M. DeLa* 3-25-87  
 U.S. SOIL CONSERVATION SERVICE DATE

THIS DEVELOPMENT PLAN IS APPROVED FOR EROSION AND SEDIMENT CONTROL BY HOWARD SOIL CONSERVATION DISTRICT

APPROVED: *Stephen L. Smith* 3/25/87  
 HOWARD SOIL CONSERVATION DISTRICT DATE

<p><b>DEPARTMENT OF PUBLIC WORKS</b>          HOWARD COUNTY, MARYLAND</p> <p><i>John C. Nemy</i> 3-30-87          DIRECTOR OF PUBLIC WORKS DATE</p> <p><i>Robert M. Brainerd</i> 3-30-87          CHIEF, BUREAU OF UTILITIES DATE</p>	<p><b>JEROME J. NORRIS &amp; ASSOCIATES</b>          LAND PLANNING - HOUSING CONSULTANTS</p> <p>6001 32ND STREET, N.W.          WASHINGTON, D.C., 20015          (202) 537-1334</p>		<p>DES: JN</p> <p>DRN: L.P., FB</p> <p>CHK: JS</p> <p>DATE: 3-19-87</p>	<p><b>PLAN AND PROFILE</b>  <b>WATER MAINS</b></p>	<p><b>CONTRACT NO 44-1622-D</b>  <b>PARCEL C-9</b>  <b>CORRIDOR NORTH</b>          SIXTH ELECTION DISTRICT          HOWARD COUNTY, MARYLAND</p>	<p>SCALE AS SHOWN</p> <p>SHEET 1 OF 1</p>
<p>600' SCALE MAP NO. <b>48</b> BLOCK NO. <b>13</b></p>						