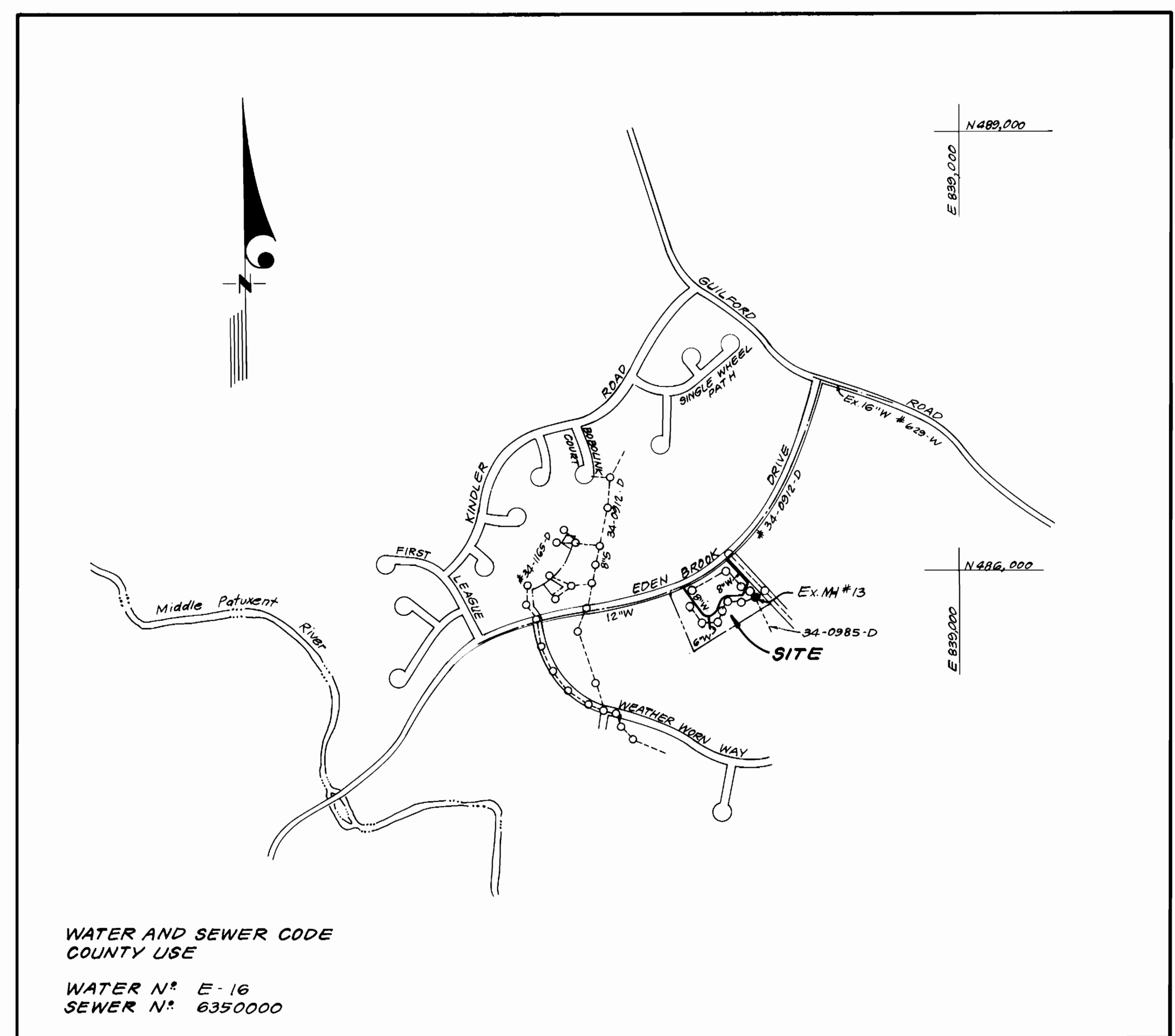


TYPE OF BUILDING	Apartments & Condominiums
NUMBER OF UNITS	Apartments 45 & Condominiums 44
NUMBER OF SHC'S	1
NUMBER OF WHC'S	45
DRAINAGE AREA	Patuxent



WATER AND SEWER CODE
COUNTY USE

WATER N° E-16
SEWER N° 6350000

VICINITY MAP

GENERAL NOTES

- Approximate location of existing mains are shown. The contractor shall take all necessary precautions to protect existing mains and services and maintain uninterrupted supply. Any damage incurred shall be repaired immediately to the satisfaction of the Inspector, at the contractor's expense.
- All horizontal controls are based on Maryland State Coordinates.
- All vertical controls are based on U.S.G.S. Datum.
- All pipe elevations shown are invert elevations.
- Clear all utilities by a minimum of 6" clear all poles by 2'-0" minimum or tunnel as required. Any cost incurred to the contractor for tunneling or bracing of poles shall be included in unit prices bid for excavation and backfill.
- For details not shown on the drawings use Howard County Standard Details.
- For materials and construction methods use Howard County Standard Specifications & Ho. Co. Design Manual Volume 1. The Contractor shall have a copy of Volume 1 on the job.
- Contractor shall locate existing utilities a minimum of two (2) weeks in advance of construction operations in the vicinity of proposed utilities at his own expense.
- Contractor shall notify the following utilities or agencies at least five (5) working days before starting work shown on these plans.
 - State Highway Administration - 531-5533
 - Baltimore Gas & Electric Company - Contractor Services - 850-4620
 - Baltimore Gas & Electric Company - Underground Damage Control - 859-9004
 - Baltimore Gas & Electric Company - Trouble Shooting - 298-9001
 - "Miss Utility" - 1-559-0100
 - Chesapeake & Potomac (C & P) Telephone Company - 1-800-257-7777
 - Colonial Pipeline Company - 795-1390
 - Bureau of Utilities Howard County - 992-2366
- Trees are to be protected from damage to maximum extent. Trees located within the construction strip are not to be removed or damaged by the contractor.
- Contractor shall remove trees, stumps, and roots along line of excavation as directed by the Inspector. Payment for such removal shall be included in the unit price bid for excavation and backfill.
- Place regulation "Men Working" and warning signs as required to comply with Maryland State Highway Administration Manual of Traffic Control for Highway Construction and Maintenance Operations.
- All water mains to be D.I.P. unless otherwise noted.
- Top of all water mains to have a minimum of 3-1/2' cover unless otherwise noted.
- Valves adjacent to tees shall be strapped to tees.
- Block all fittings with concrete.
- Bury line elevations on fire hydrants shall be set to the elevations shown on the drawings. All fire hydrants shall be strapped and buttressed with concrete in accordance with standard details. Soil around the fire hydrant to be compacted in accordance with Sections 1003 & 1008 of the Standard Specifications.
- All water house connections shall be for an inside meter setting.
- The contractor shall not operate any water main valves on the existing system.
- All sewer mains shall be C.S.P.X., V.C.P.X., P.V.C., or A.C.P. Class 2400 unless otherwise noted.
- The contractor shall provide a joint in all sewer mains within 2'-0" of exterior manhole wall.
- All manholes shall be 4'-0" inside diameter, unless otherwise noted.
- Water main and water house connection lines must have a minimum of one foot separation from the sanitary sewer and sewer house connections as they cross. Except at crossings, water and sewer lines shall have a minimum horizontal separation of 10'.
- For all Copper Water House Connections, utilize flared type fittings only.

CONTRACT NO. 34-1621-D
VILLAGE OF KINGS CONTRIVANCE
SECTION 2 AREA 3 PARCEL "F"
HOWARD COUNTY, MARYLAND
DEPARTMENT OF PUBLIC WORKS

Sediment Control Measures will be implemented in accordance with Section 2.19 of the Specifications B with Site Development Plan #87-170; Drawing 4, Sediment & Erosion Control.

REVIEWED FOR HOWARD SOIL CONSERVATION DISTRICT AND MEETS TECHNICAL REQUIREMENT.
Signature: *[Signature]* DATE: 4-21-87

U.S. SOIL CONSERVATION SERVICE
This Development Plan is approved for Soil Erosion and Sediment Control by the Howard Soil Conservation District.

APPROVED:
Signature: *[Signature]* DATE: 4/21/87
Howard S.C.D.

QUANTITIES			
ITEM	ESTM'D	AS-BUILT	MATERIAL/SUPPLIER
8" W	848 LF	850 LF	ATLANTIC STATES CAST IRON PIPE CO. CL 52
6" W	98 LF	100 LF	ATLANTIC STATES CAST IRON PIPE CO. CL 52
8" S	10 LF	10 LF	AMERICAN PIPE - PVC SDR 35
1" WHC	235 LF	235 LF	HALSTEAD METALS - TYPE 'K'
3/4" WHC	395 LF	395 LF	HALSTEAD METALS - TYPE 'K'
F. H.	4 EA	4 EA	KENNEDY
4'-0" DIA. MH	1 EA	1 EA	ATLANTIC PRE-CAST
8" V	1 EA	1 EA	KENNEDY
6" V (excl. F.H.)	2 EA	2 EA	KENNEDY
12"x8" T.S. & V.	2 EA	2 EA	CLOW
8" DC TYPE 'B'	1 EA	1 EA	CONSTRUCTED IN FIELD

DEPARTMENT OF PUBLIC WORKS
HOWARD COUNTY, MARYLAND

[Signature] DATE: 4/21/87
DIRECTOR OF PUBLIC WORKS

[Signature] DATE: 4-20-87
CHIEF, BUREAU OF UTILITIES

[Signature] DATE: _____
CHIEF, LAND DEVELOPMENT DIV.

CFE CLARK-FINEFROCK & SACKETT
ENGINEERS - PLANNERS - SURVEYORS
7135 MINSTREL WAY, COLUMBIA, MD. 21045
(301) 381-7500 BALTO
(301) 621-8100 WASH



DES: CCM			
DRN: VLM			
CHK: JTR			
CN	QUANTITIES ADDED		10/2/87
DATE: 3-87			
BY NO.	REVISION		

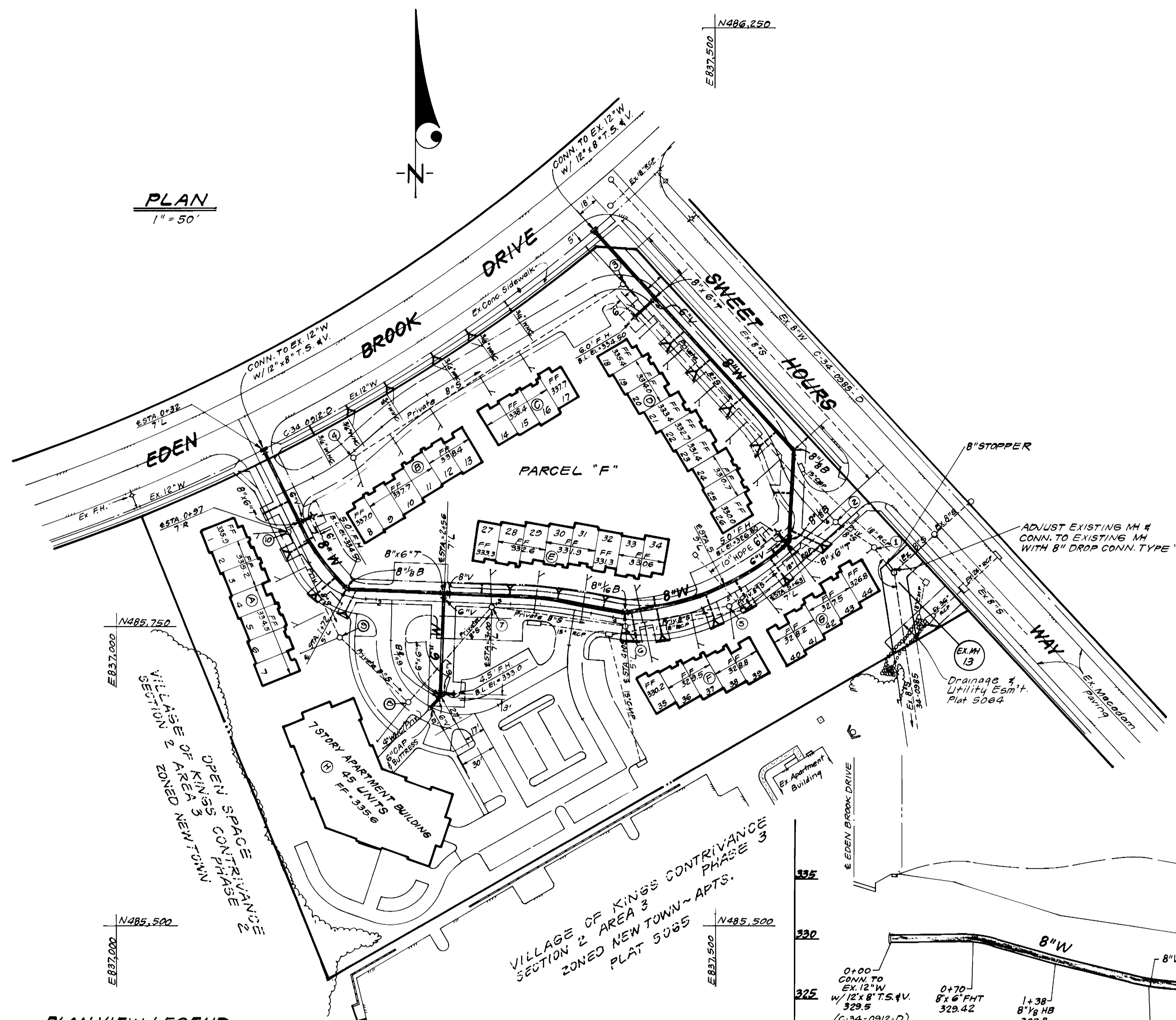
TITLE SHEET

600'S SCALE MAP NO. 42 BLOCK NO. _____

COLUMBIA, VILLAGE OF KINGS CONTRIVANCE
SECTION 2 AREA 3
PARCEL "F"
6TH ELECTION DISTRICT
CONTRACT NO. 34-1621-D

SCALE
1"=600'
SHEET
1 OF 2

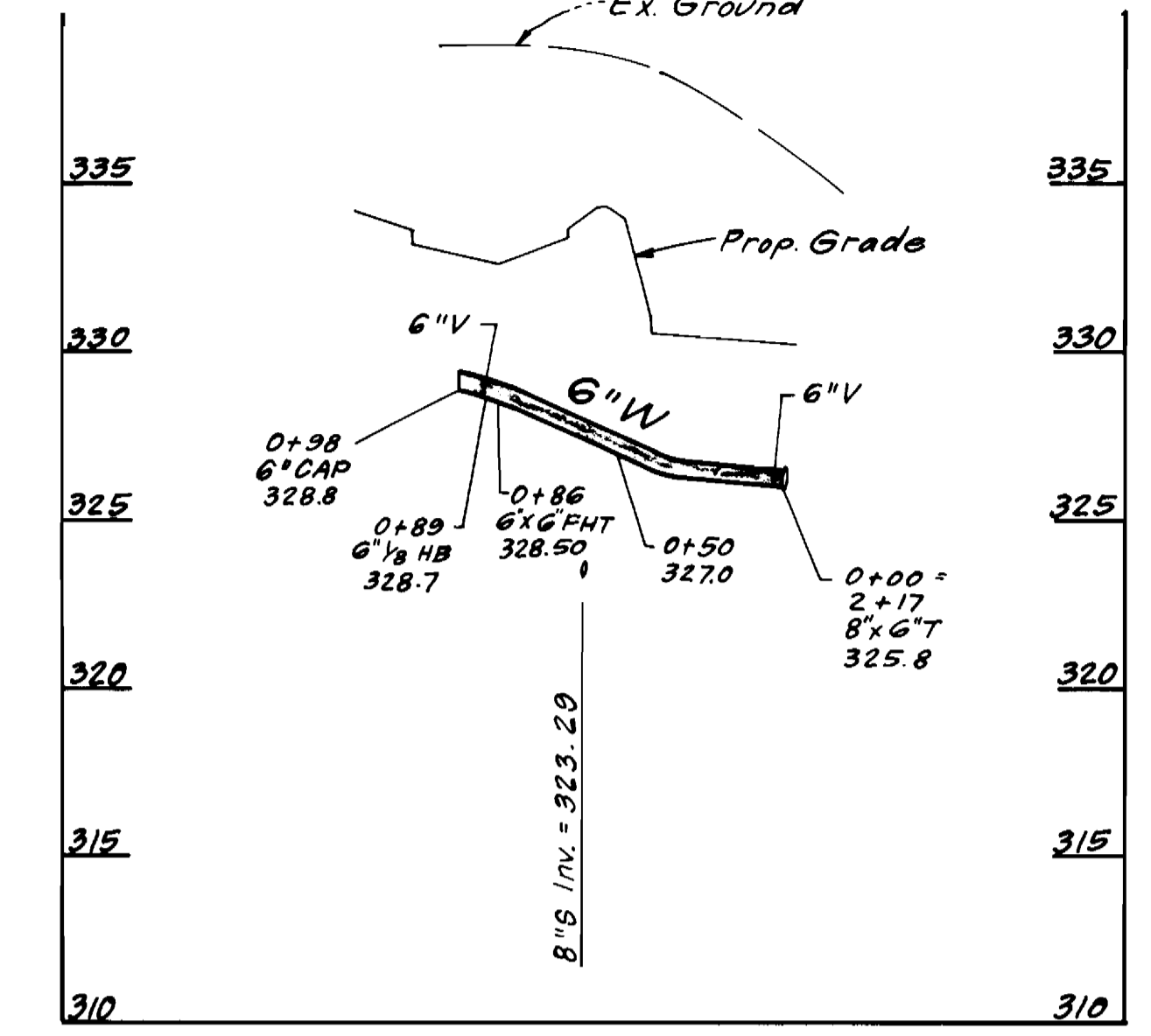
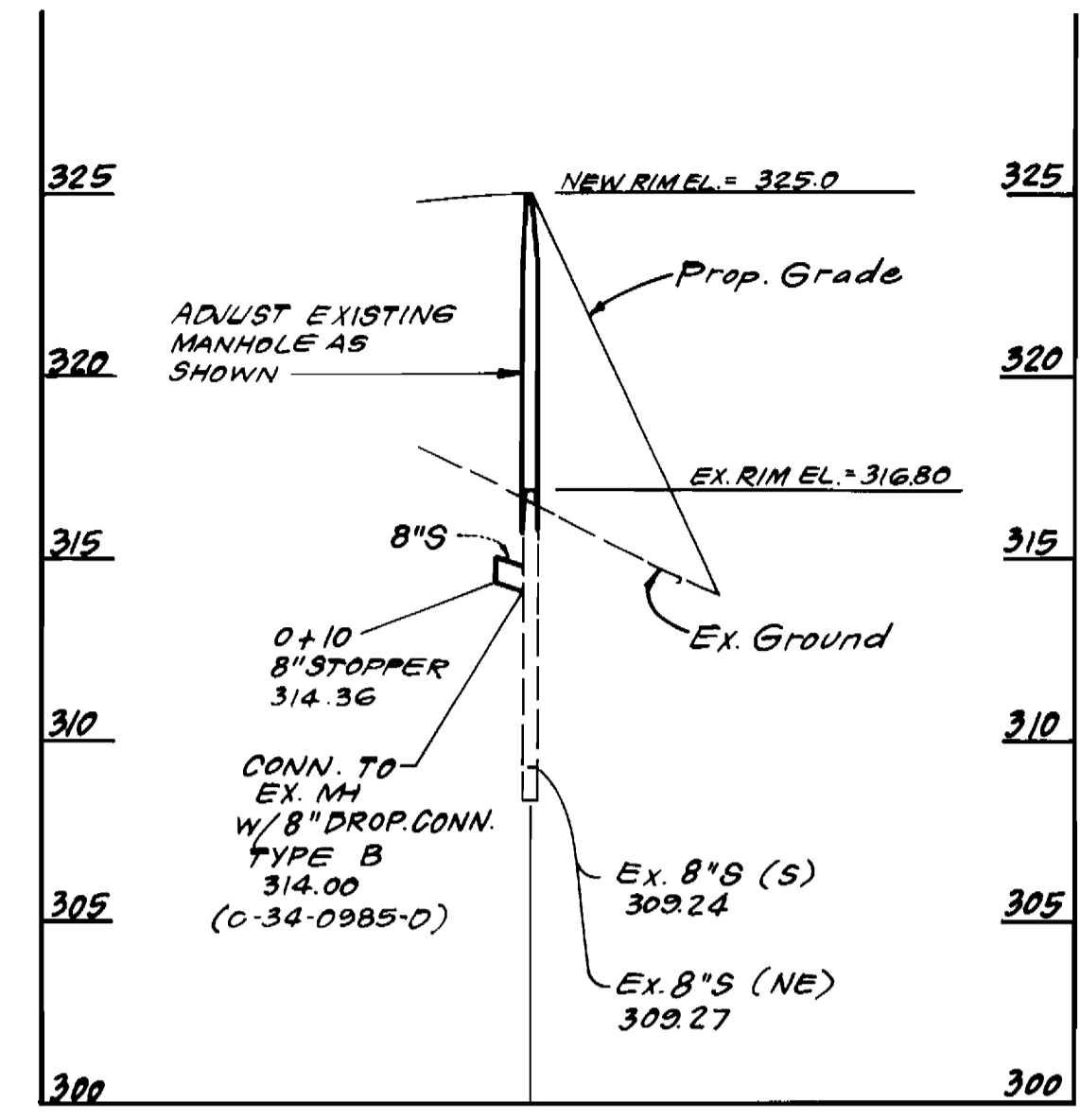
PLAN
1" = 50'



PLAN VIEW LEGEND

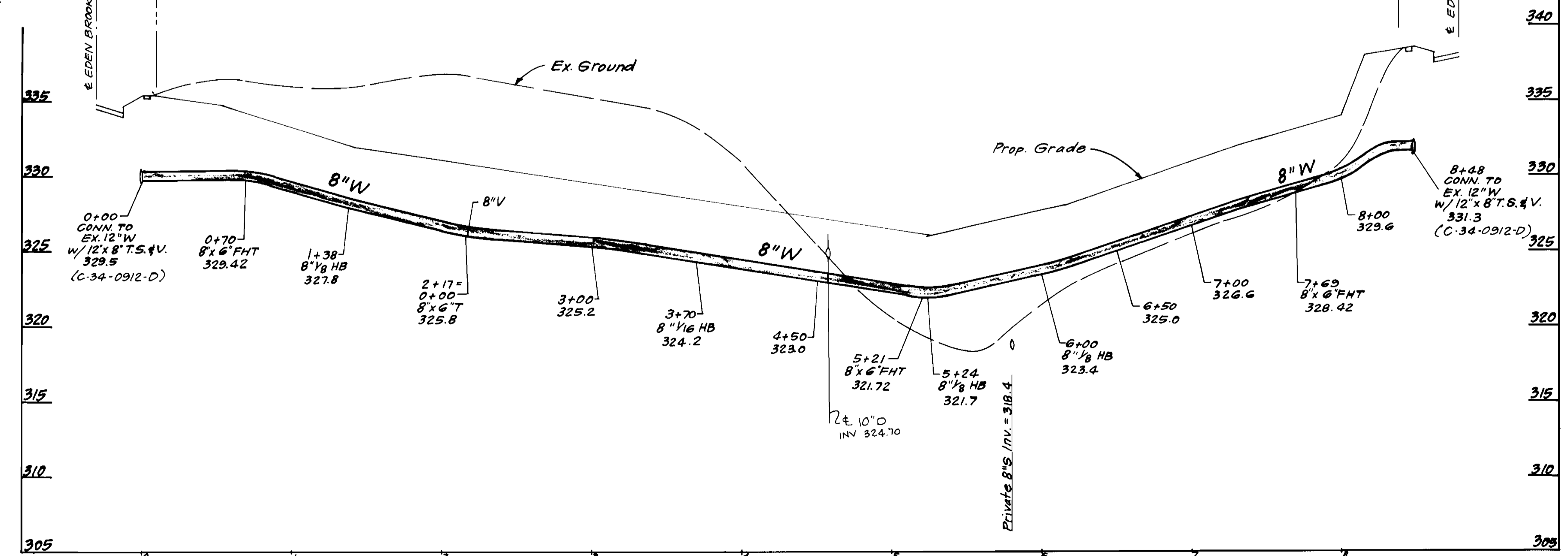
(A) Building Number
1-44 Unit Numbers

EX. MH
13



PROFILE SCALE

HORIZONTAL 1" = 50'
VERTICAL 1" = 5'



DEPARTMENT OF PUBLIC WORKS
HOWARD COUNTY, MARYLAND

Director of Public Works: *[Signature]* DATE: 4-27-87
 Chief, Bureau of Engineering: *[Signature]* DATE: 4-27-87
 Chief, Land Development Div.: *[Signature]* DATE: 4-27-87

CFE CLARK · FINEPROCK & SACKETT
ENGINEERS · PLANNERS · SURVEYORS
7135 MINSTREL WAY, COLUMBIA, MD. 21045
(301) 381-7500 BALTO
(301) 621-8100 WASH



DES: CCM			
DRN: VLM			
CHK: JTR	ROW	2	ADDED 10" DRAIN AT STA 4+55 ±
	CN		ADDITION OF MH. NUMBERS
DATE: 3-87	BY NO.		REVISION

PLAN AND PROFILES OF
WATER AND SEWER MAINS

COLUMBIA, VILLAGE OF KINGS CONTRIVANCE
SECTION 2 AREA 3
PARCEL "F"
6TH ELECTION DISTRICT
CONTRACT NO. 34-1621-D

SCALE
AS SHOWN
SHEET
2 OF 2