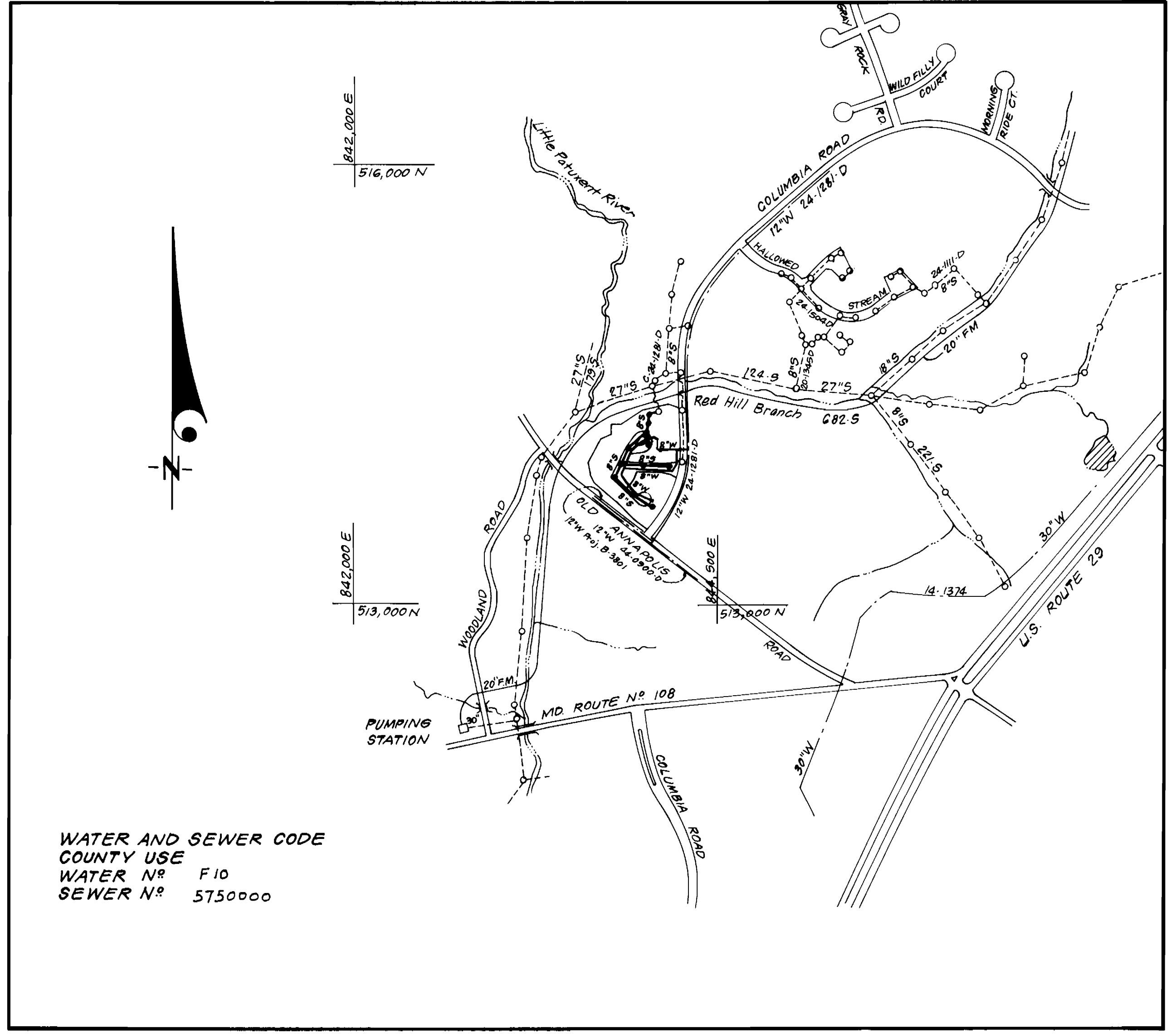
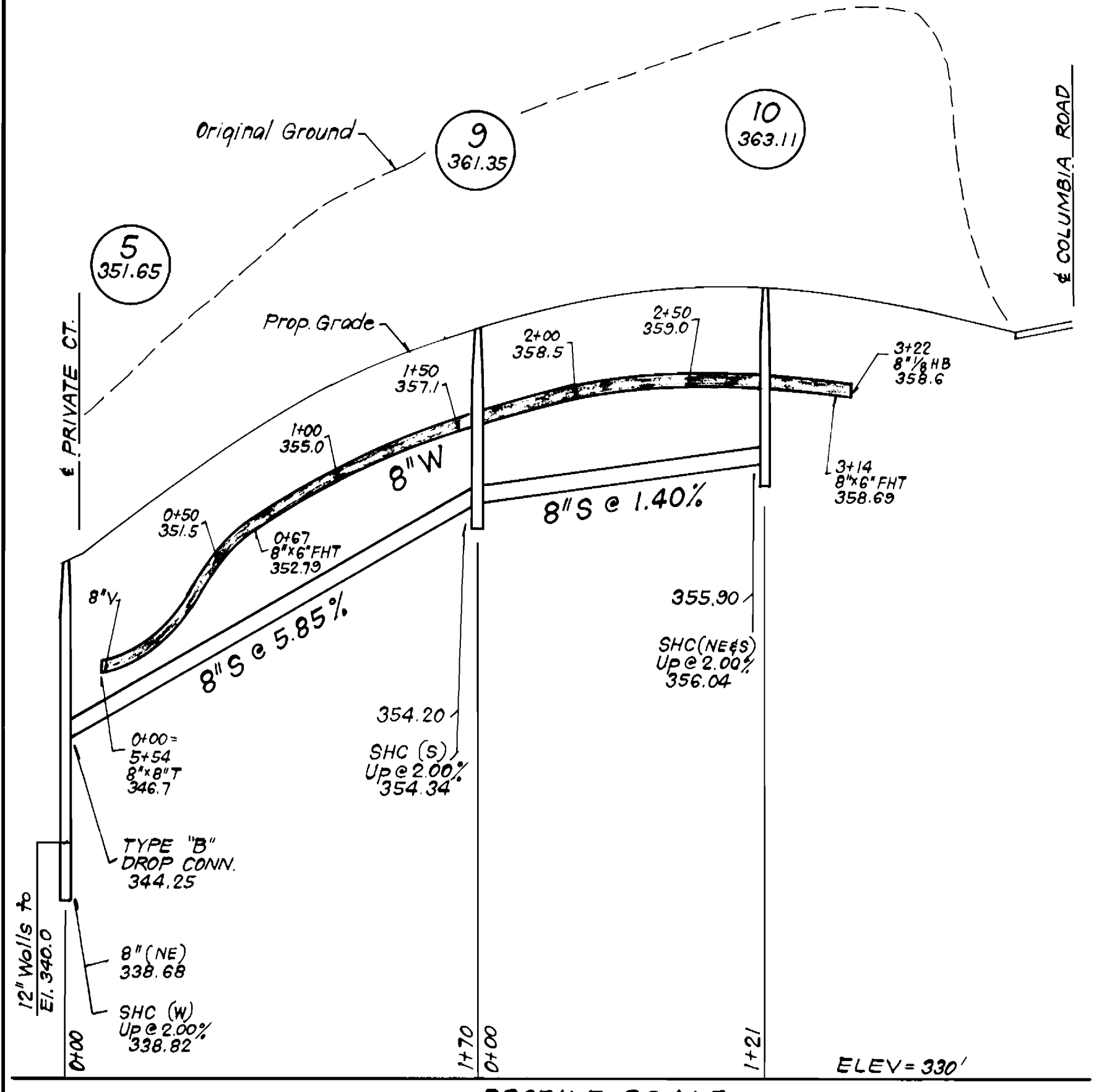


SEWER HOUSE CONNECTIONS					
LOTS	Inv. @ R	Min. C.	LOTS	Inv. @ R	Min. C.
1 # 2	356.4	359.6	38 # 39	339.8	343.0
3 # 4	355.3	359.1	40 # 41	340.1	343.3
5 # 6	355.3	358.5	42 # 43	339.8	343.0
7 # 8	352.0	355.2	44 # 45	340.6	343.8
9 # 10	349.4	352.6	46 # 47	341.7	345.0
11 # 12	348.2	351.4	48 # 49	342.7	345.9
13 # 14	347.5	350.7	50	343.9	347.1
15 # 16	345.9	349.1	51 # 52	344.3	347.5
17 # 18	326.3	329.5	53 # 54	347.6	350.8
19	325.8	329.0	55	350.4	353.6
20	343.7	346.5	56 # 57	352.5	355.7
21	343.7	346.5	58 # 59	353.1	356.3
22 # 23	337.6	340.8	60 # 61	352.6	355.8
24 # 25	337.8	341.0	62 # 63	352.6	355.8
26 # 27	338.3	341.5	64	352.4	355.6
28 # 29	338.8	342.0	65 # 66	354.9	358.1
30 # 31	339.0	342.2	67 # 68	355.5	358.7
32 # 33	339.2	342.4	69 # 70	356.1	359.3
34 # 35	339.4	342.6	71	356.7	359.9
36 # 37	339.6	342.8			

TYPE OF BUILDING	Townhouse
Nº OF LOTS	71
Nº OF WHC's	71
Nº OF SHC's	71
DRAINAGE AREA	Route 108 Pumping Station (Patapsco)

**GENERAL NOTES**

- Approximate location of existing mains are shown. The contractor shall take all necessary precautions to protect existing mains and services and maintain uninterrupted supply. Any damage incurred shall be repaired immediately to the satisfaction of the Inspector, at the contractor's expense.
- All horizontal controls are based on Maryland State Coordinates.
- All vertical controls are based on U.S.G.S. Datum.
- All pipe elevations shown are invert elevations.
- Clear all utilities by a minimum of 6" clear all poles by 2'-0" minimum or tunnel as required. Any cost incurred to the contractor for tunneling or bracing at poles shall be included in unit prices bid for excavation and backfill.
- For details not shown on the drawings use Howard County Standard Specifications.
- For materials and construction methods use Howard County Standard Specifications & Ho Co. Design Manual, Volume II. The contractor shall have a copy of Volume II on the job.
- Contractor shall locate existing utilities a minimum of two (2) weeks in advance of construction operations in the vicinity of proposed utilities at his own expense.
- Contractor shall notify the following utilities or agencies at least five (5) working days before starting work shown on these plans.
  - State Highway Administration - 531-5533
  - Baltimore Gas & Electric Company - Contractor Services - 850-4620
  - Customer Service - 685-0123
  - Baltimore Gas & Electric Company - Underground Damage Control - 859-9004
  - Baltimore Gas & Electric Company - Trouble Shooting - 298-9001
  - "Miss Utility" - 1-559-0100
  - Chesapeake & Potomac (C & P) Telephone Company - 1-800-257-7777
  - Colonial Pipeline Company - 795-1390
  - Bureau of Utilities Howard County - 992-2366
- Trees are to be protected from damage to maximum extent. Trees located within the construction strip are not to be removed or damaged by the contractor.
- Contractor shall remove trees, stumps, and roots along line of excavation as directed by the Inspector. Payment for such removal shall be included in the unit price bid for excavation and backfill.
- Place regulation "Men Working" and warning signs as required to comply with Maryland State Highway Administration Manual of Traffic Control for Highway Construction and Maintenance Operations.
- All water mains to be C.I.P. or D.I.P. unless otherwise noted.
- Top of all water mains to have a minimum of 3'-1/2' cover unless otherwise noted.
- Valves adjacent to tees shall be strapped to tees.
- Block all fittings with concrete.
- Bury line elevations on fire hydrants shall be set to the elevations shown on the drawings. All fire hydrants shall be strapped and buttressed with concrete in accordance with standard details. Soil around the fire hydrant to be compacted in accordance with Sections 1003 & 1008 of the Standard Specifications.
- All water house connections shall be for an inside meter setting.
- The contractor shall not operate any water main valves on the existing system.
- All sewer mains shall be C.S.P.X., V.C.P.X., P.V.C., or A.C.P. Class 2400 unless otherwise noted.
- The contractor shall provide a joint in all sewer mains within 2'-0" of exterior manhole wall.
- All manholes shall be 4'-0" inside diameter, unless otherwise noted.
- Water main and water house connection lines must have a minimum of one foot separation from the sanitary sewer and sewer house connections as they cross. Except at crossings, water and sewer lines shall have a minimum horizontal separation of 10'.
- For all Cooper Water House Connections, utilize flared type fittings only.



WATER AND SEWER CODE  
 COUNTY USE  
 WATER N<sup>o</sup> F10  
 SEWER N<sup>o</sup> 5750000

VICINITY MAP  
 SCALE: 1" = 600'

CONTRACT NO. 24-1618-D  
 DORSEY HALL  
 SECTION 2 AREA 2  
 HOWARD COUNTY, MARYLAND  
 DEPARTMENT OF PUBLIC WORKS

QUANTITIES			
ITEM	EST'D	AS-BUILT	MATERIAL/SUPPLIER
8" W	1377 L.F.	1351.5'	DIP CLASS 52, THE CEMENT LINE/GRIFIN PIPE PRODUCTS CO.
8" S	1264 L.F.		
4'-0" DIA. MH	11 EA.		
F.H.	4 EA.	4	MOELLER / US PIPE & FOUNDARY
8" V.	5 EA.	5	US PIPE & FOUNDARY
1" WHC	645 L.F.	711.5	A.H. Mc DONALD / HOWELL METALS
2" WHC	80 L.F.	70'	" " " "
3/4" WHC	945 L.F.	1136'	" " " "
6" SHC	1200 L.F.		
TYPE "B" DROP CONN.	3 EA.		
1 1/2" DRAIN	1 EA.	1	A.H. Mc DONALD / HOWELL METALS / HANLEY HANLEY ENGINEERS
6" W	53 L.F.	45.15'	DIP CLASS 52, EXHIBIT TYPE CEMENT LINE/GRIFIN PIPE PRODUCTS CO.

Sediment Control Measures will be implemented in accordance with Article No. 15 of the Specifications & with Road Construction Plan F-27-132; Drawing, Sediment & Erosion Control.

REVIEWED FOR HOWARD SOIL CONSERVATION DISTRICT AND MEETS TECHNICAL REQUIREMENT.  
 SIGNATURE: [Signature] DATE: 6/2/87

U.S. SOIL CONSERVATION SERVICE

This Development Plan is approved for Soil Erosion and Sediment Control by the Howard Soil Conservation District.

APPROVED: [Signature] DATE: 6/22/87  
 HOWARD S.C.D.

DEPARTMENT OF PUBLIC WORKS  
 HOWARD COUNTY, MARYLAND

[Signature] DATE: 6-13-87  
 DIRECTOR OF PUBLIC WORKS

[Signature] DATE: [ ]  
 CHIEF, BUREAU OF ENGINEERING

[Signature] DATE: 6-17-87  
 CHIEF, BUREAU OF UTILITIES

[Signature] DATE: [ ]  
 CHIEF, LAND DEVELOPMENT DIV.

CLARK - FINEPROCK & SACKETT  
 ENGINEERS - PLANNERS - SURVEYORS

11315 LOCKWOOD DRIVE SILVER SPRING, MARYLAND 20904  
 (301) 593-3400



DES:	
DRN:	
CHK:	
DATE:	
BY:	
NO.:	
REVISION:	
DATE:	

TITLE SHEET

600' SCALE MAP NO. 30 BLOCK NO. [ ]

DORSEY HALL  
 SECTION 2 AREA 2  
 LOTS H-1 THRU H-73  
 2<sup>ND</sup> ELECTION DISTRICT  
 CONTRACT NO. 24-1618-D

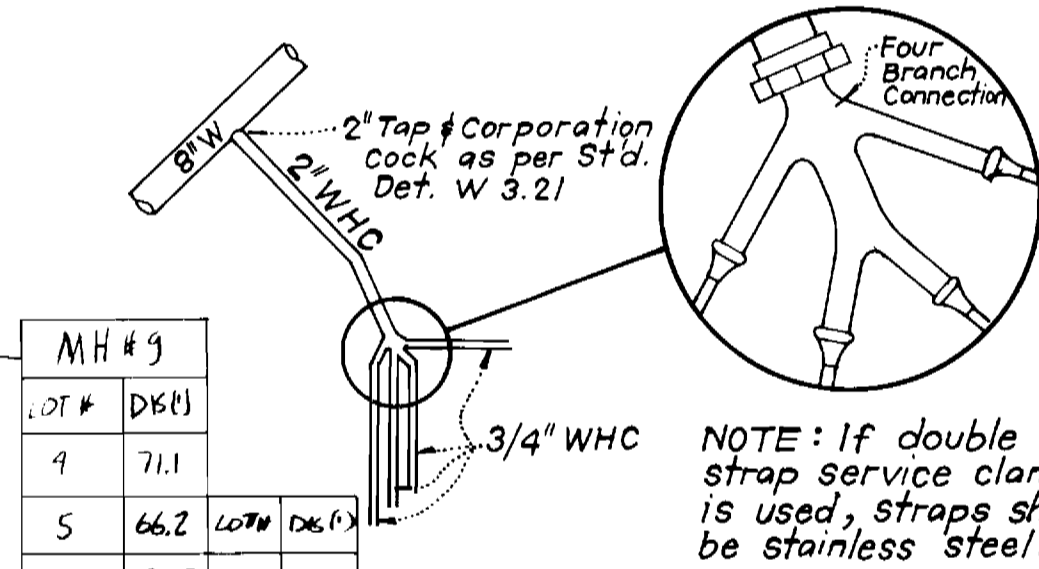
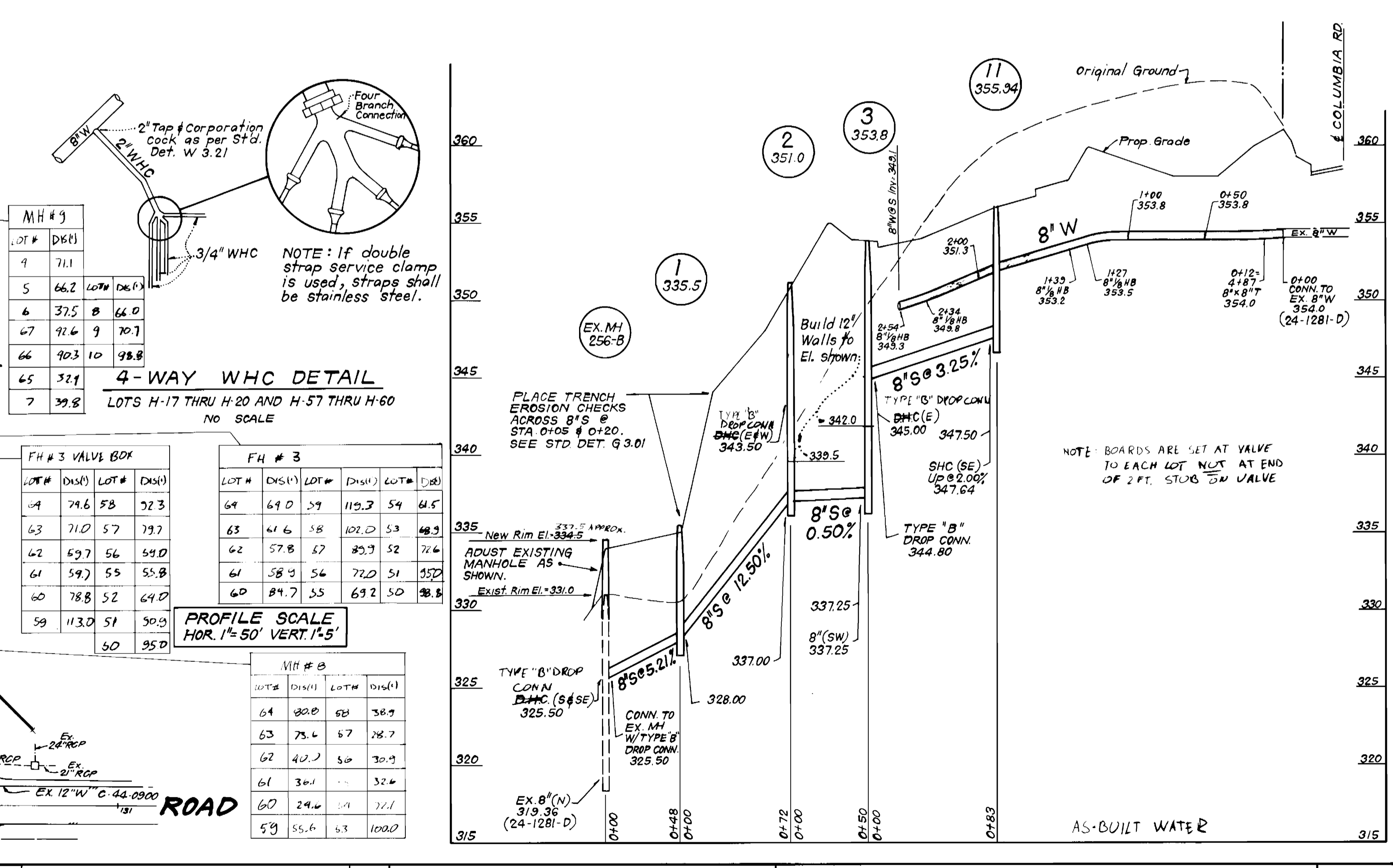
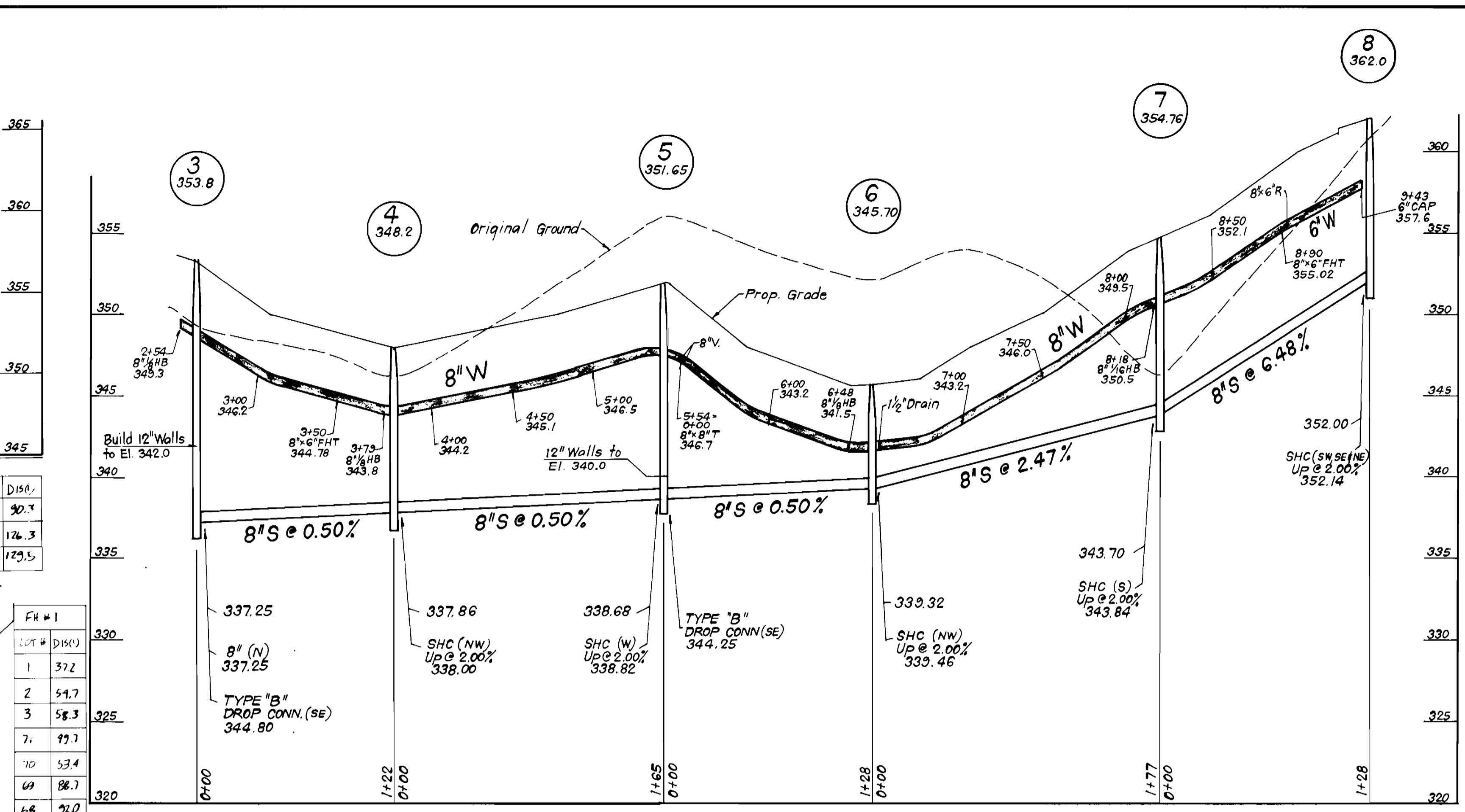
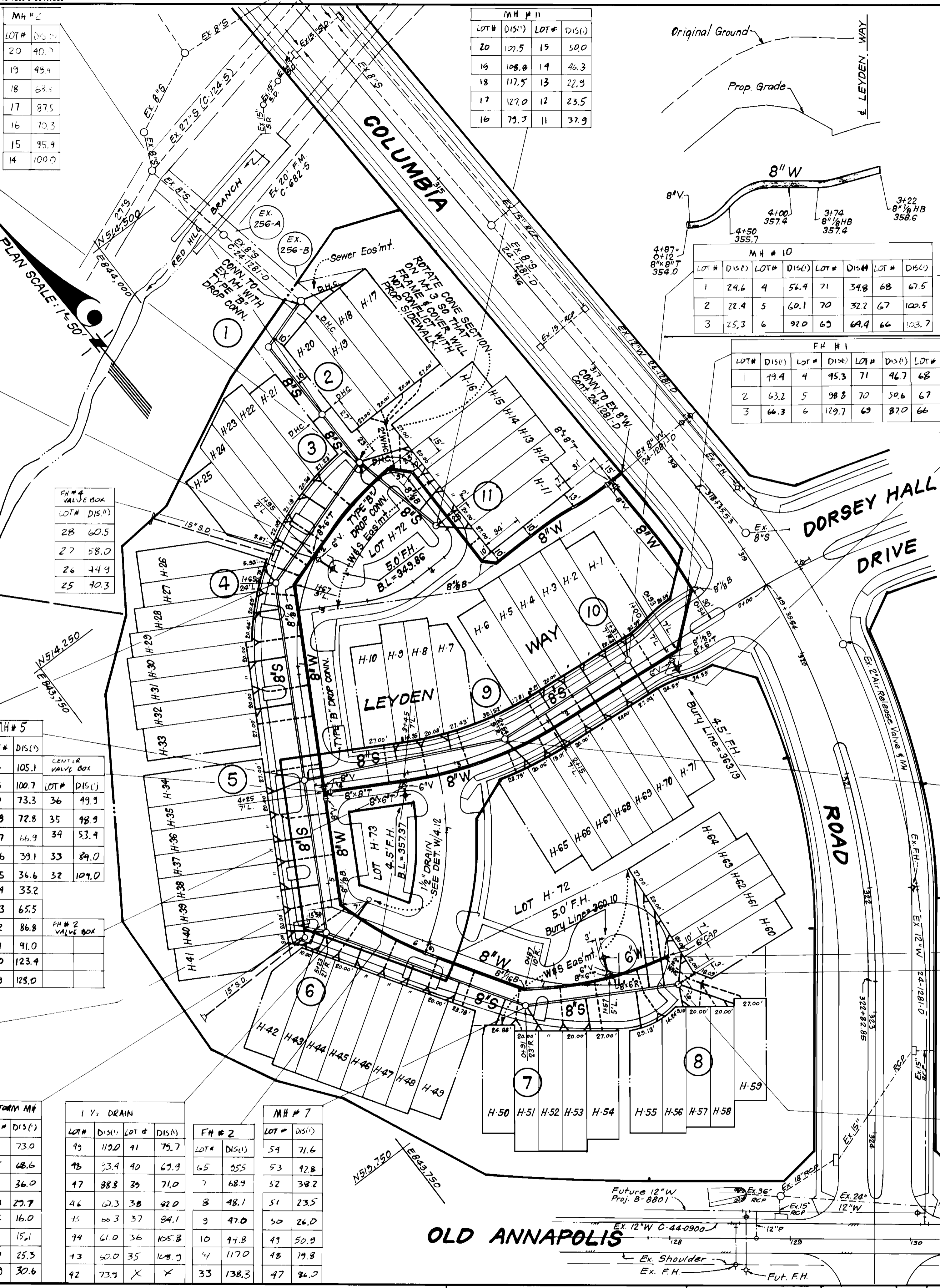
SCALE AS SHOWN  
 SHEET 1 OF 2

MH # 3	LOT #	DIS (')
24	81.2	
23	75.2	
22	43.5	
21	40.6	
20	37.0	
19	45.5	
18	66.9	
17	85.3	
16	40.7	
15	53.3	
14	57.1	
13	85.2	
12	91.2	
11	113.3	

FH # 4	LOT #	DIS (')
31	122.7	
30	98.9	
29	89.9	
28	66.5	
27	69.7	
26	55.6	
25	52.7	
24	54.5	
23	55.2	
22	72.6	
21	75.0	
20	112.3	
19	115.1	
18	125.7	

MH # 4	LOT #	DIS (')
32	95.2	
31	90.5	
30	98.5	
29	51.2	
28	19.3	
27	17.0	
26	19.7	
25	29.0	
24	51.1	
23	54.6	
22	89.7	
21	93.3	

MH # 6	LOT #	DIS (')
19	130.2	
18	99.4	
17	53.2	
16	59.5	
15	55.5	
14	28.0	
13	22.7	
12	22.2	
11	34.3	
10	35.3	
9	10.0	
8	69.3	
7	49.3	
6	74.2	



4-WAY WHC DETAIL  
LOTS H-17 THRU H-20 AND H-57 THRU H-60  
NO SCALE

MH # 9	LOT #	DIS (')
4	71.1	
5	66.2	
6	37.5	
7	91.6	
8	66.0	
9	70.7	
10	98.8	
11	39.8	

FH # 3 VALVE BOX

LOT #	DIS (')	LOT #	DIS (')
69	79.6	58	52.3
63	71.0	57	79.7
62	69.7	56	59.0
61	59.7	55	55.8
60	78.8	52	69.0
59	113.0	51	50.3
50	95.0		

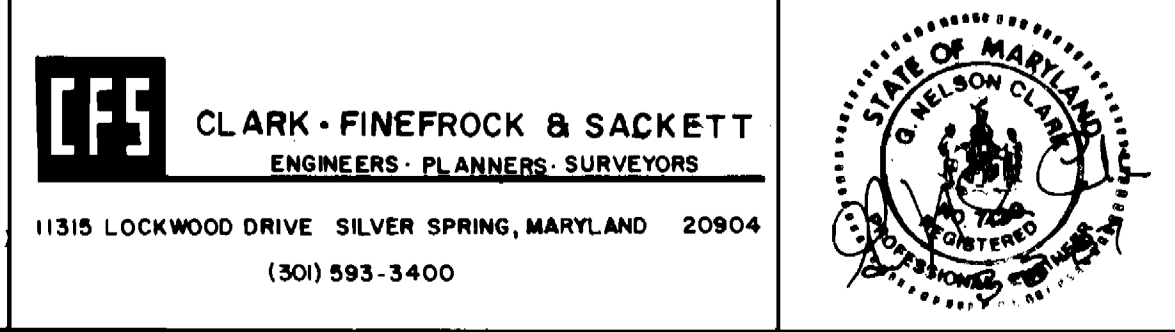
PROFILE SCALE  
HOR. 1\"/>

MH # 8	LOT #	DIS (')
64	80.0	
63	75.6	
62	40.7	
61	30.1	
60	29.6	
59	55.6	
58	63	
57	100.0	

DEPARTMENT OF PUBLIC WORKS  
HOWARD COUNTY, MARYLAND

12-87  
DATE

CLARK, FINEFROCK & SACKETT  
ENGINEERS - PLANNERS - SURVEYORS  
11315 LOCKWOOD DRIVE SILVER SPRING, MARYLAND 20904  
(301) 593-3400



DES:	DRN:	CHK:	DATE:	BY:	NO.	REVISION:	DATE:

PLAN & PROFILE OF  
WATER & SEWER MAINS

600' SCALE MAP NO. 20 BLOCK NO.

DORSEY HALL  
SECTION 2 AREA 2  
LOTS H-1 THRU H-73  
2ND ELECTION DISTRICT  
CONTRACT NO. 24-1618-D

SCALE  
AS SHOWN

SHEET  
2 OF 2



MH # 3	MH # 2	MH # 1	EXISTING MH 25C B
LOT# DIS#	LOT# DIS#	LOT# DIS#	LOT# DIS#
23	61.8	21	10.4
22	56.0	20	9.0
21	52.4	19	8.2
20	50.5	18	103.5
16	45.6	17	110.5
15	42.2	16	80.1
14	47.5	15	83.5
13	74.5		
12	109.2		
11	109.7		

MH # 11	MH # 10
LOT# DIS#	LOT# DIS#
16	69.9
15	64.8
14	37.1
13	30.0
12	28.3
11	30.3
1	20.8
2	20.8
3	34.7
4	47.4
5	79.7
6	80.7
7	32.3
20	47.8
69	53.5
68	80.3
67	83.0
66	119.6

FH # 1 VALUE BOX					
LOT#	DIS#	LOT#	DIS#	LOT#	DIS#
1	39.9	4	76.3	71	36.5
2	43.0	5	108.2	70	68.3
3	70.5	6	119.1	69	74.5

FH # 1					
LOT#	DIS#	LOT#	DIS#	LOT#	DIS#
1	51.3	4	82.6	69	72.0
2	53.9	71	31.3	68	104.5
3	72.2	70	65.7	67	113.5

FH # 4	
LOT#	DIS#
31	111.9
30	109.0
29	80.7
28	78.0
27	59.3
26	56.5
25	53.4
24	50.4
23	63.3
22	43.8
19	112.5
13	112.2
12	170.8
11	121.0

FH # 4 VALUE BOX	
LOT#	DIS#
26	56.5
25	53.4
24	50.4
23	63.3
22	43.8
19	112.5
13	112.2
12	170.8
11	121.0

CENTER VALUE BOX	
LOT#	DIS#
35	54.0
34	54.8
33	86.9
32	91.1

MH # 4	
LOT#	DIS#
33	115.4
32	110.2
31	77.5
30	73.3
29	37.4
28	34.0
27	15.1
26	19.8
25	30.3
24	34.6
23	22.0
24	76.1

MH # 6		MH # 5		FH # 2	
LOT#	DIS#	LOT#	DIS#	LOT#	DIS#
49	121.0	9	86.0		
48	113.0	10	81.2		
47	83.9	37	57.5		
46	75.0	36	51.5		
45	46.0	35	77.0		
44	39.0	34	36.1		
43	21.3	33	68.3		
42	23.3	32	73.0		
41	33.6	31	104.9		
40	36.4	30	105.7		
39	55.3	29	142.0		
38	60.3	28	148.0		
37	86.6				
36	94.9				

1/2 DRAIN		MH # 7		FH # 3	
LOT#	DIS#	LOT#	DIS#	LOT#	DIS#
49	111.7	42	69.0	53	52.7
48	105.5	41	78.2	52	29.3
47	83.4	40	79.1	51	27.6
46	72.2	39	78.3	50	27.7
45	64.1	38	81.1	49	40.0
44	62.3	37	93.1	48	69.2
43	66.7	36	97.3	47	56.5

MH # 9	
LOT#	DIS#
5	53.1
6	47.7
68	59.7
67	53.5
66	33.0
65	32.4
7	48.3
8	52.2
9	36.1
10	41.3

QUANTITIES			
ITEM	EST'D	AS-BUILT	MATERIAL/SUPPLIER
8"W	1377 L.F.		
8"S	1269 L.F.	1206.25'	J.M. MANUFACTURING CORP./THE HARRINGTON CORP.
4'-0" DIA. MH	11 EA.	11	ATLANTIC CONCRETE PRODUCTS INC./B+C
F.H.	4 EA.		UTILITY SUPPLY, INC. FRAME + COVER
8"V	5 EA.		
1" W/H C	645 L.F.		
2" W/H C	80 L.F.		
3/4" W/H C	945 L.F.		
Ø SHC	1200 L.F.	1356.25'	J.M. MANUFACTURING CORP./THE HARRINGTON CORP.
TYPE "B" DRAIN	3 EA.	8	SEE PLANS FOR ADDITIONAL S-C HANGED FROM D.H.C.
1 1/2" DRAIN	1 EA.		J.M. MANUFACTURING /THE HARRINGTON CORP.
6"W	53 L.F.		GENSTAR

FH # 3 VALUE BOX					
LOT#	DIS#	LOT#	DIS#	LOT#	DIS#
64	87.0	59	111.5	52	71.5
63	64.6	58	106.5	51	78.5
62	64.0	57	71.3	50	101.3
61	64.1	56	47.5	X	X
60	65.3	55	53.7	X	X

MH # 8			
LOT#	DIS#	LOT#	DIS#
64	96.0	58	57.3
63	59.4	57	22.8
62	53.9	56	23.8
61	25.2	55	50.7
60	12.5	54	80.4
55	56.5	53	104

AS BUILT SEWER

DORSEY HALL  
SECTION 2 AREA 2  
LOTS H-1 THRU H-73  
2ND ELECTION DISTRICT  
CONTRACT NO. 24-1618-D

DATE	REVISION	BY	NO.