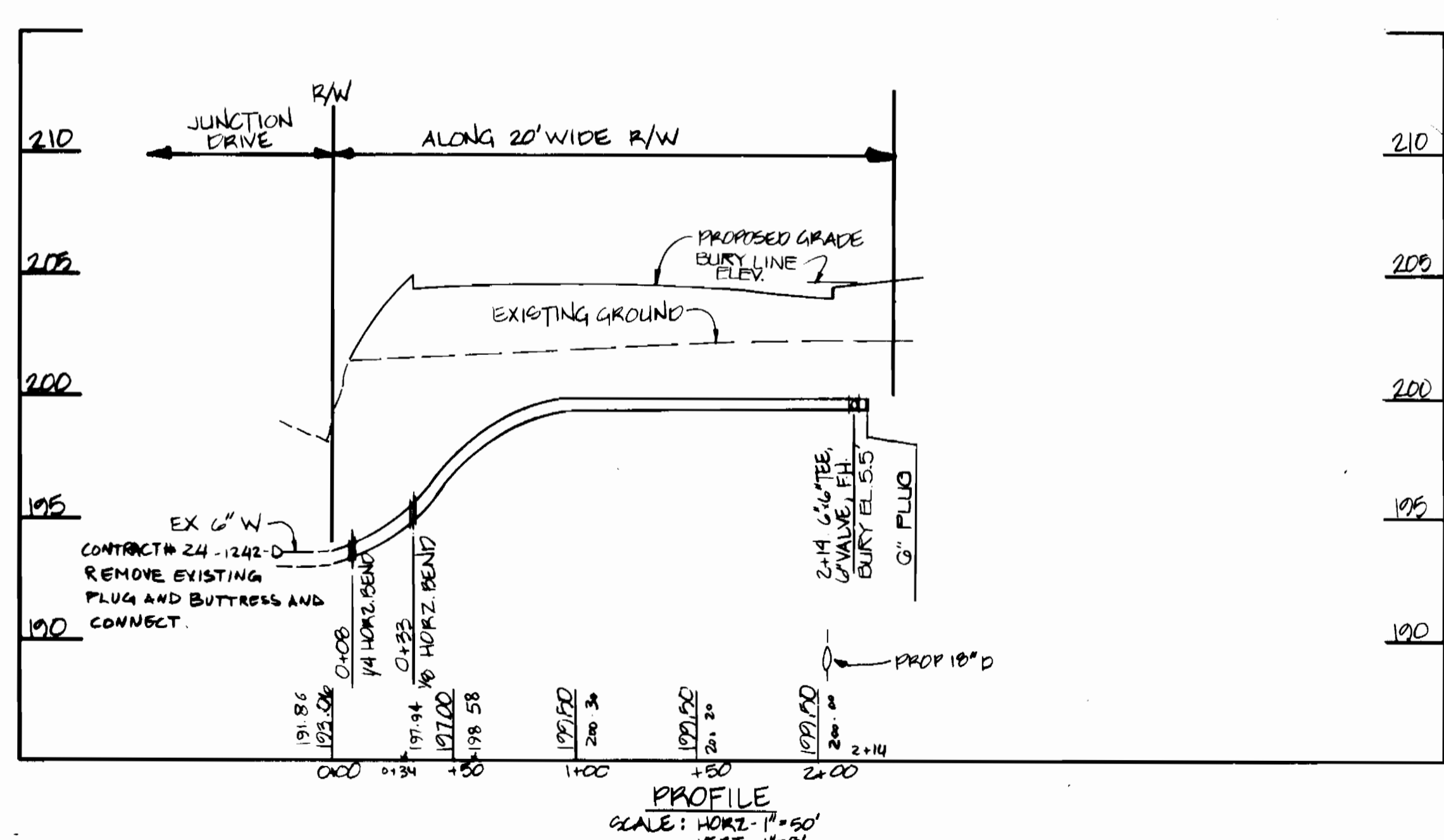
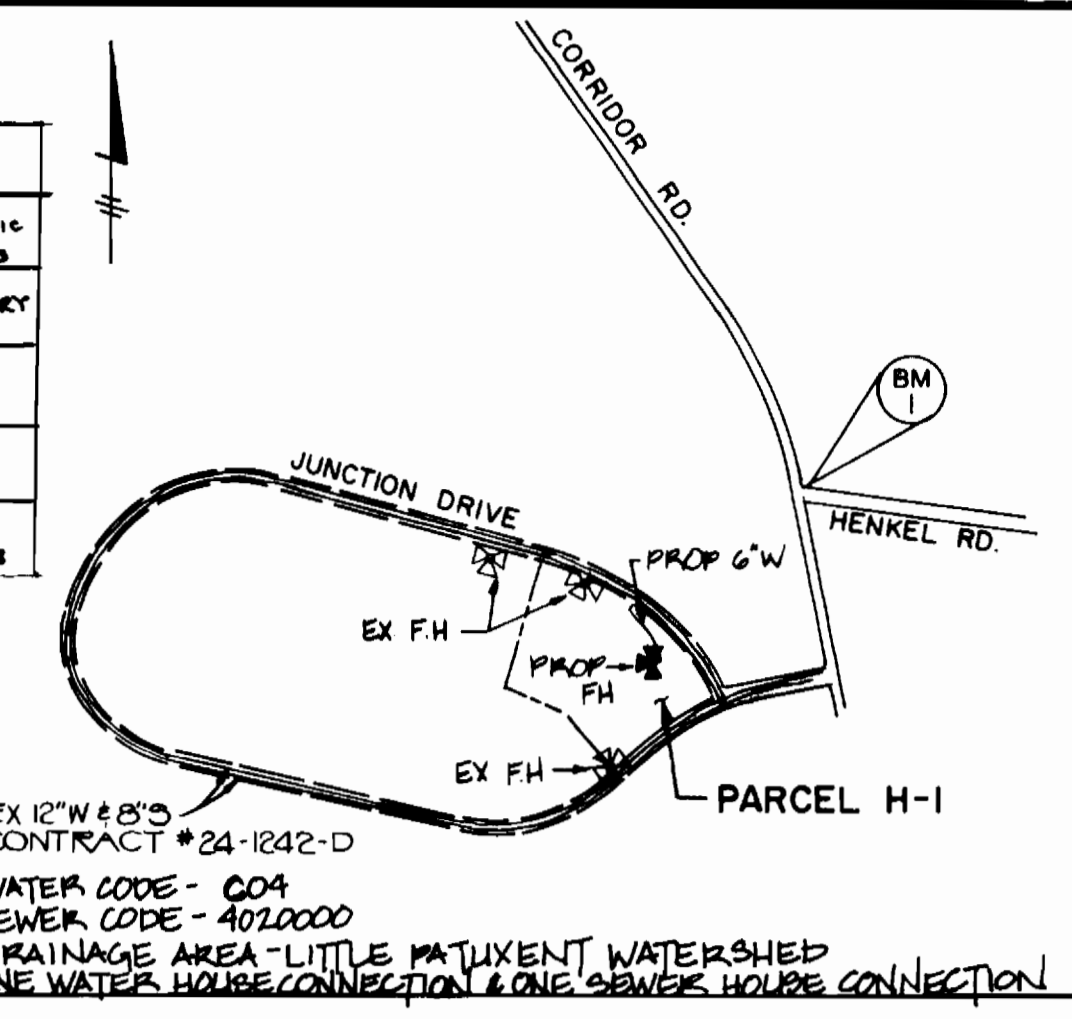


PLAN
SCALE: 1"=50'



PROFILE
SCALE: HORIZ. 1"=50'
VERT. 1"=5'

QUANTITIES				
NO.	ITEMS	PROP.	AS BUILT	SUPPLIER
1	6" WATER	232 LF	232 LF	CL 52, ATLANTIC STATES
2	1/8" HORIZONTAL BEND	1 EA	1 EA	UNION FOUNDRY
3	1/16" HORIZONTAL BEND	1 EA	1 EA	" "
4	4" VALVE	1 EA	1 EA	MUELLER Co. # A227-22
5	FIRE HYDRANT & VALVE	1 EA	1 EA	MUELLER # A-422



VICINITY MAP
SCALE: 1"=600'

BENCH MARK DATA

- BM NO. 1 ELEV. 210.71
- CUT END CONC. CURB, N SIDE CORRIDOR RD.
- INTERSECTION OF CORRIDOR RD. AND HENKEL RD.
- BM NO. 24 ELEV. 159.19
- POLE NO. J-5 ON NORTH SIDE OF BROCK BRIDGE ROAD

GENERAL NOTES

- APPROXIMATE LOCATION OF EXISTING UTILITIES ARE SHOWN. THE CONTRACTOR SHALL TAKE ALL NECESSARY PRECAUTIONS TO PROTECT EXISTING UTILITIES AND SERVICE AND TO MAINTAIN UNINTERRUPTED SERVICE. ANY DAMAGE INCURRED DUE TO THE CONTRACTORS OPERATION SHALL BE REPAIRED IMMEDIATELY AT THE CONTRACTORS EXPENSE.
- ALL PIPE ELEVATIONS ARE INVERT ELEVATIONS.
- THE CONTRACTOR SHALL NOTIFY "MISS UTILITY 1-800-257-7777 AND BUREAU OF UTILITIES (892-2566) AT LEAST 3 DAYS PRIOR TO BEGINNING OF ANY CONSTRUCTION SHOWN HEREON.
- FOR ALL STANDARD DETAILS SEE STANDARDS BOUND IN SPECIFICATIONS.
- CLEAR ALL UTILITIES BY A MINIMUM OF 6" CLEAR ALL POLES BY A MINIMUM OF 2'-0" OR TUNNEL AS REQUIRED ANY COSTS INCURRED BY THE CONTRACTOR FOR TUNNELING OR BRACING POLES SHALL BE INCLUDED IN THE UNIT PRICE BID FOR EXCAVATION.
- ALL WATER LINES TO HAVE A MINIMUM OF 3'-6" COVER UNLESS OTHERWISE NOTED.
- BLOCK ALL FITTINGS WITH CONCRETE, STANDARDS BOUND IN SPECIFICATIONS
- BURY LINE ELEVATIONS ON FIRE HYDRANTS SHALL BE SET TO THE ELEVATIONS SHOWN ON THE DRAWING. SOIL AROUND HYDRANTS TO BE COMPACTED IN ACCORDANCE WITH SECTION 1003 OF THE STANDARD SPECIFICATION.
- ALL FIRE HYDRANTS SHALL BE STRAPPED TO THE TEE AND SHALL BE BUTTRESSED WITH CONCRETE IN ACCORDANCE WITH THE STANDARD DETAILS.
- ALL HORIZONTAL AND VERTICAL CONTROLS ARE BASED ON MD. STATE DATUM.
- ALL WATER MAINS SHALL BE D.I.P. UNLESS OTHERWISE NOTED, CL 52.
- CONTRACTOR SHALL NOTIFY BALTIMORE GAS AND ELECTRIC CO. 72 HOURS PRIOR TO ANY CONSTRUCTION IN THE VICINITY OF ANY GAS AND ELECTRIC FACILITIES BY CALLING 539-8000 EXT. 69
- TREES ARE TO BE PROTECTED FROM DAMAGE TO THE MAXIMUM EXTENT. ALL TREES LOCATED WITHIN THE CONSTRUCTION AREA ARE NOT TO BE REMOVED OR DAMAGED BY THE CONTRACTOR
- ALL VALVES SHALL BE STRAPPED TO TEES IN ACCORDANCE WITH STANDARD DETAILS.
- THE CONTRACTOR SHALL REMOVE TREES, STUMPS AND ROOTS ALONG LINE OF EXCAVATION AS DIRECTED BY THE ENGINEER. PAYMENT FOR SUCH REMOVAL SHALL BE INCLUDED IN THE UNIT PRICE BID FOR EXCAVATION AND BACKFILL FOR WATER MAINS.
- PLACE REGULATION "MEN WORKING" AND WARNING SIGNS AS REQUIRED TO COMPLY WITH MARYLAND STATE HIGHWAY ADMINISTRATION MANUAL OF TRAFFIC CONTROL FOR HIGHWAY CONSTRUCTION AND MAINTENANCE OPERATIONS.
- THE CONTRACTOR SHALL NOTIFY THE CIP TELEPHONE CO. PRIOR TO ANY CONSTRUCTION IN BALTIMORE
- SEDIMENT CONTROL SHALL BE ACCOMPLISHED IN ACCORDANCE WITH SITE DEVELOPMENT PLAN SDP-87-100 AND ARTICLES OF THE HOWARD COUNTY DESIGN MANUAL VOL. III STANDARD SPECIFICATIONS.
- WATER CODE: C004
- SEWER CODE: 4020000
- WATER METER TO BE LOCATED INSIDE PROPOSED BUILDING.
- THERE SHALL BE 1 (ONE) WATER CONNECTION AND 1 (ONE) SEWER CONNECTION TO THE PROPOSED BUILDING.

THIS DEVELOPMENT PLAN IS APPROVED FOR SOIL EROSION AND SEDIMENT CONTROL BY THE HOWARD COUNTY SOIL CONSERVATION DISTRICT	REVIEWED FOR HOWARD SOIL CONSERVATION DISTRICT AND MEETS TECHNICAL REQUIREMENTS
APPROVED: <i>Stephen L. Fisher</i> 3/16/87 SIGNATURE DATE HOWARD CO. SOIL CONSERVATION DISTRICT	APPROVED: <i>James M. Sch</i> 3/16/87 SIGNATURE DATE US SOIL CONSERVATION SERVICE

DEPARTMENT OF PUBLIC WORKS
HOWARD COUNTY, MARYLAND

John F. Neuma 3-20-87
DIRECTOR OF PUBLIC WORKS DATE

Robert M. Bainger 3-16-87
CHIEF BUREAU OF UTILITIES DATE

Michael J. ... 3/16/87
CHIEF BUREAU OF ENGINEERING DATE

Walter ... 3-16-87
CHIEF LAND DEVELOPMENT DIVISION DATE

HITNEY AILEY
CONSULTING ENGINEERS
1850 York Road
Timonium, Md. 21093
301-252-6060

Stephen L. Fisher
3/16/87

DES. AR.			
DRN. RZB			
CHK. P.D			
DATE 11/20/84	BY NO.	REVISION	DATE

PLAN OF WATER MAIN
CONTRACT NO. 44-1616-D

600' SCALE MAP NO. 48 BLOCK NO. 19

WATER MAIN EXTENSION
PARCEL "H-1"
JUNCTION INDUSTRIAL PARK SECTION I
ELECTION DISTRICT GILFORD NO. 6
HOWARD COUNTY, MARYLAND

SCALE AS SHOWN
SHEET 1 OF 1