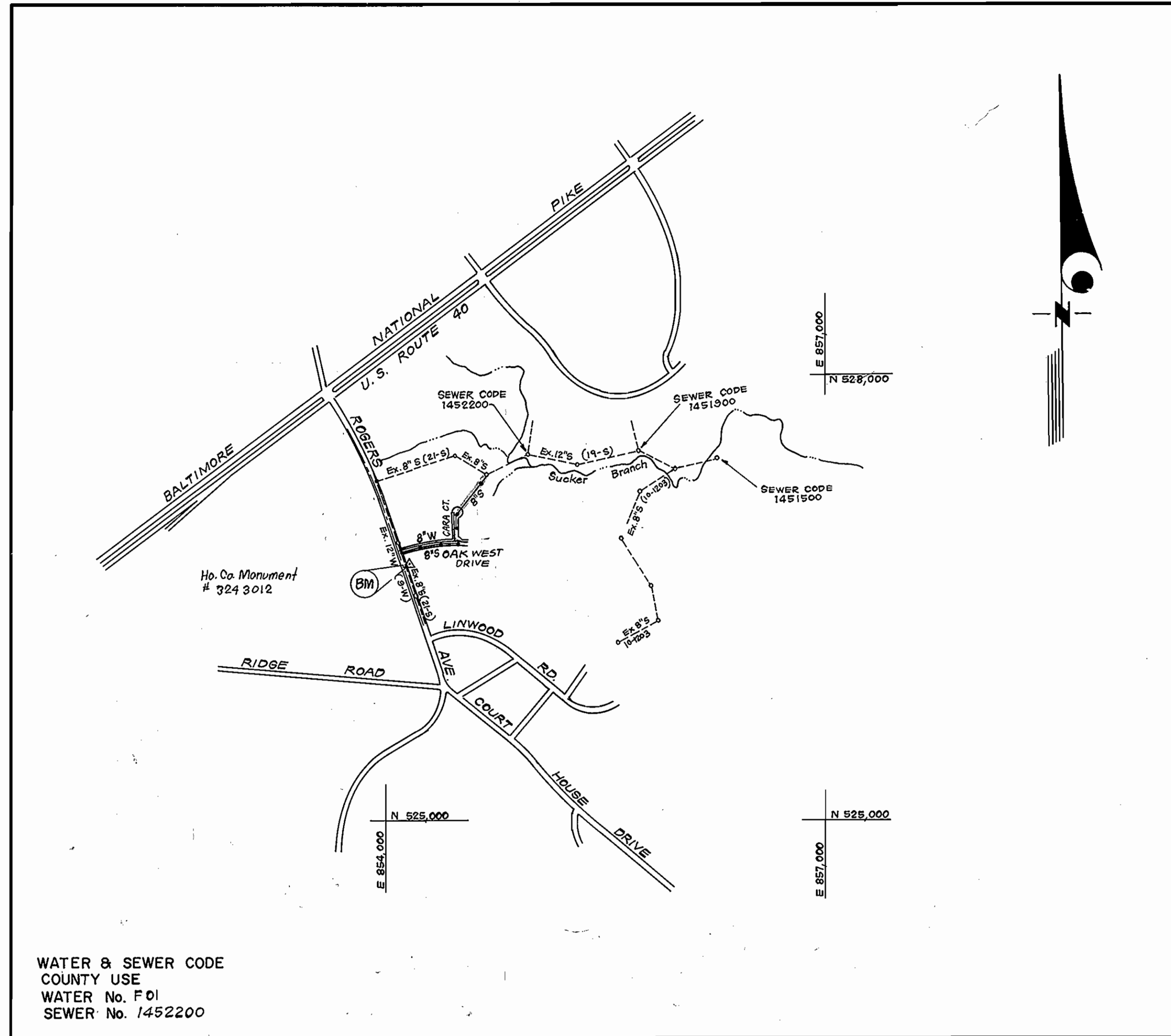


**SEWER HOUSE CONNECTION TABLE**

LOTS	INV. @ 12'	MIN. C.
1	338.1	342.0
2/3	337.6	341.3
4/5	336.5	340.2
FUT. 12	335.7	339.4
6	331.5	335.2
7	303.4	307.7
8	326.6	330.3
9	332.6	335.9
10	334.5	338.2
FUT. 13	335.1	338.8

TYPE OF BUILDING	Single Family
No. OF LOTS	10
No. OF W.H.C.	12
No. OF S.H.C.	12
DRAINAGE AREA	Patapsco W.W.T.P.



WATER & SEWER CODE  
COUNTY USE  
WATER No. FDI  
SEWER No. 1452200

**VICINITY MAP**  
SCALE: 1" = 600'

**GENERAL NOTES**

- Approximate location of existing mains are shown. The contractor shall take all necessary precautions to protect existing mains and services and maintain uninterrupted supply. Any damage incurred shall be repaired immediately to the satisfaction of the Inspector, at the contractor's expense.
- All horizontal controls are based on Maryland State Coordinates.
- All vertical controls are based on U.S.G.S. Datum.
- All pipe elevations shown are invert elevations.
- Clear all utilities by a minimum of 6" clear all poles by 2'-0" minimum or tunnel as required. Any cost incurred to the contractor for tunneling or bracing at poles shall be included in unit prices bid for excavation and backfill.
- For details not shown on the drawings use Howard County Standard Details.
- For materials and construction methods use Howard County Standard Specifications & Ho. Co. Design Manual, Volume III. The Contractor shall have Volume III on the job.
- Contractor shall locate existing utilities a minimum of two (2) weeks in advance of construction operations in the vicinity of proposed utilities at his own expense.
- Contractor shall notify the following utilities or agencies at least five (5) working days before starting work shown on these plans.
  - State Highway Administration - 531-5533
  - Baltimore Gas & Electric Company - Contractor Services - 850-4620
  - Baltimore Gas & Electric Company - Underground Damage Control - 850-9004
  - B.G. & E. Company - Trouble Shooting - 298-2001
  - "Miss Utility" - 1-559-0100
  - Chesapeake & Potomac (C & P) Telephone Company - 1-800-257-7777
  - Colonial Pipeline Company - 795-1390
  - Bureau of Utilities Howard County - 992-2366
- Trees are to be protected from damage to maximum extent. Trees located within the construction strip are not to be removed or damaged by the contractor.
- Contractor shall remove trees, stumps, and roots along line of excavation as directed by the Inspector. Payment for such removal shall be included in the unit price bid for excavation and backfill.
- Place regulation "Men Working" and warning signs as required to comply with Maryland State Highway Administration Manual of Traffic Control for Highway Construction and Maintenance Operations.
- All water mains to be D.I.P. unless otherwise noted.
- Top of all water mains to have a minimum of 3-1/2' cover unless otherwise noted.
- Valves adjacent to tees shall be strapped to tees.
- Block all fittings with concrete.
- Bury line elevations on fire hydrants shall be set to the elevations shown on the drawings. All fire hydrants shall be strapped and buttressed with concrete in accordance with standard details. Soil around the fire hydrant to be compacted in accordance with Sections 1003 & 1008 of the Standard Specifications.
- All water house connections shall be for an inside meter setting.
- The contractor shall not operate any water main valves on the existing system.
- All sewer mains shall be C.S.P.X., V.C.P.X., P.V.C., or A.C.P. Class 2400 unless otherwise noted.
- The contractor shall provide a joint in all sewer mains within 2'-0" of exterior manhole wall.
- All manholes shall be 4'-0" inside diameter, unless otherwise noted.
- Water main and water house connection lines must have a minimum of one foot separation from the sanitary sewer and sewer house connections as they cross. Except at crossings, water and sewer lines shall have a minimum horizontal separation of 10'.
- For all Copper Water House Connections, utilize flared type fittings only.

**CONTRACT NO. 14-1613-D**  
**OAK WEST**  
**SECTION I AREA I, LOTS I THRU II**  
**HOWARD COUNTY, MARYLAND**  
**DEPARTMENT OF PUBLIC WORKS**

Sediment Control Measures will be implemented in accordance with Section 219 of the Specifications & with Road Construction Plan F 87-21; Drawing I-4 Sediment & Erosion Control.

REVIEWED FOR HOWARD SOIL CONSERVATION DISTRICT AND MEETS TECHNICAL REQUIREMENT  
*John McVick* 7-9-87  
SIGNATURE DATE  
U.S. SOIL CONSERVATION SERVICE

This Development Plan is approved for Soil Erosion and Sediment Control by the Howard Soil Conservation District.

APPROVED:  
*Stephen L. Fisher* 7/9/87  
Howard S.C.D. DATE

QUANTITIES			
ITEM	EST. MD.	AS-BUILT	MATERIAL/SUPPLIER
6" WATER	272 L.F.	272 L.F.	(D.I.P.) ATLANTIC STATES CAST IRON PIPE CO.
8" WATER	527 L.F.	503 L.F.	" " " " " " " "
8" SEWER	860 L.F.	438 L.F.	CERTAINTEED P.V.C. S.D.R. 35
6" SHC	230 L.F.	224 L.F.	" " " " " " " "
1" WHC	120 L.F.	149 L.F.	COPPER BY VINCENT BRASS & HALSTEAD INDUSTRIES
3/4" WHC	280 L.F.	217 L.F.	" " " " " " " "
JACKING OR BORING WATER	35 L.F.	35 L.F.	STEEL CASING - A.W.W.A. C200-15
F.H.	2 EA.	2 EA.	A.W.W.A. C502-80 / AMERICAN DARLING
4'-0" DIA. MH	5 EA.	5 EA.	PRECAST / ATLANTIC CONCRETE PRODUCTS
12"x8" T.S. & V.	1 EA.	1 EA.	A.W.W.A. CLASS 125 / AMERICAN DARLING
6" V. (excl. F.H.)	1 EA.	1 EA.	" C509-80 / " "
1 1/2" DRAIN	1 EA.	1 EA.	COPPER VINCENT BRASS & HALSTEAD IND.
8" V.	1 EA.	1 EA.	A.W.W.A. C509-80 / AMERICAN DARLING
DROP CONN. TYPE "B"	1 EA.	1 EA.	CERTAINTEED P.V.C. (CONCRETE GIRDED)

DEPARTMENT OF PUBLIC WORKS  
HOWARD COUNTY, MARYLAND

*James M. ...* 7/20/87  
DIRECTOR OF PUBLIC WORKS DATE

*...* 7-20-87  
CHIEF, BUREAU OF ENGINEERING DATE

*...* 7-16-87  
CHIEF, BUREAU OF UTILITIES DATE

*...* 7-17-87  
CHIEF, LAND DEVELOPMENT DIV. DATE

**CFE** CLARK, FINEPROCK & SACKETT  
ENGINEERS - PLANNERS - SURVEYORS  
7135 MINSTREL WAY, COLUMBIA, MD. 21045  
(BALT) 381-7500 (WASH) 621-8100



DES: J.T.R.			
DRN: V.L.M.			
CHK: J.T.R.			
DATE: 6-87	BY: NO.	REVISION	DATE

TITLE SHEET

600' SCALE MAP NO. \_\_\_\_\_ BLOCK NO. \_\_\_\_\_

**OAK WEST**  
**SECTION I AREA I, LOTS I THRU II**  
**2<sup>ND</sup> ELECTION DISTRICT**  
**CONTRACT 14-1613-D**

SCALE AS SHOWN

SHEET 1 OF 2

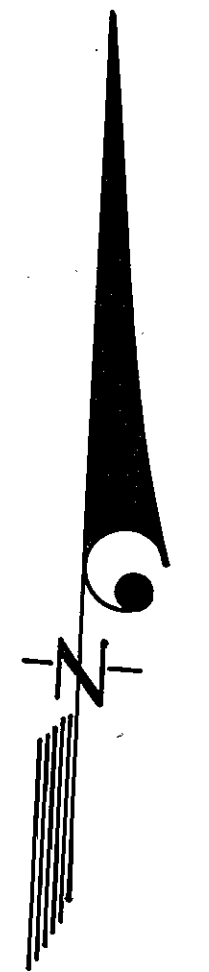
AS-BUILT: 2-22-88

LANCLOTTA PROPERTY  
PARCEL B-1  
PLAT 6656

HOWARD COUNTY  
MARYLAND

CARA COURT

PLACE TRENCH EROSION CHECKS  
15' @ STA'S 0+20 & 0+35 AND  
MH 10 @ STA'S 0+20 & 0+35 AND  
BETWEEN MH 10 AND 11 @ STA'S  
0+15, 0+30, 0+45 & 0+60 (6 REQ'D.)  
SEE STD. DETAIL G-3.01.



M.C. SAUTER  
167/176

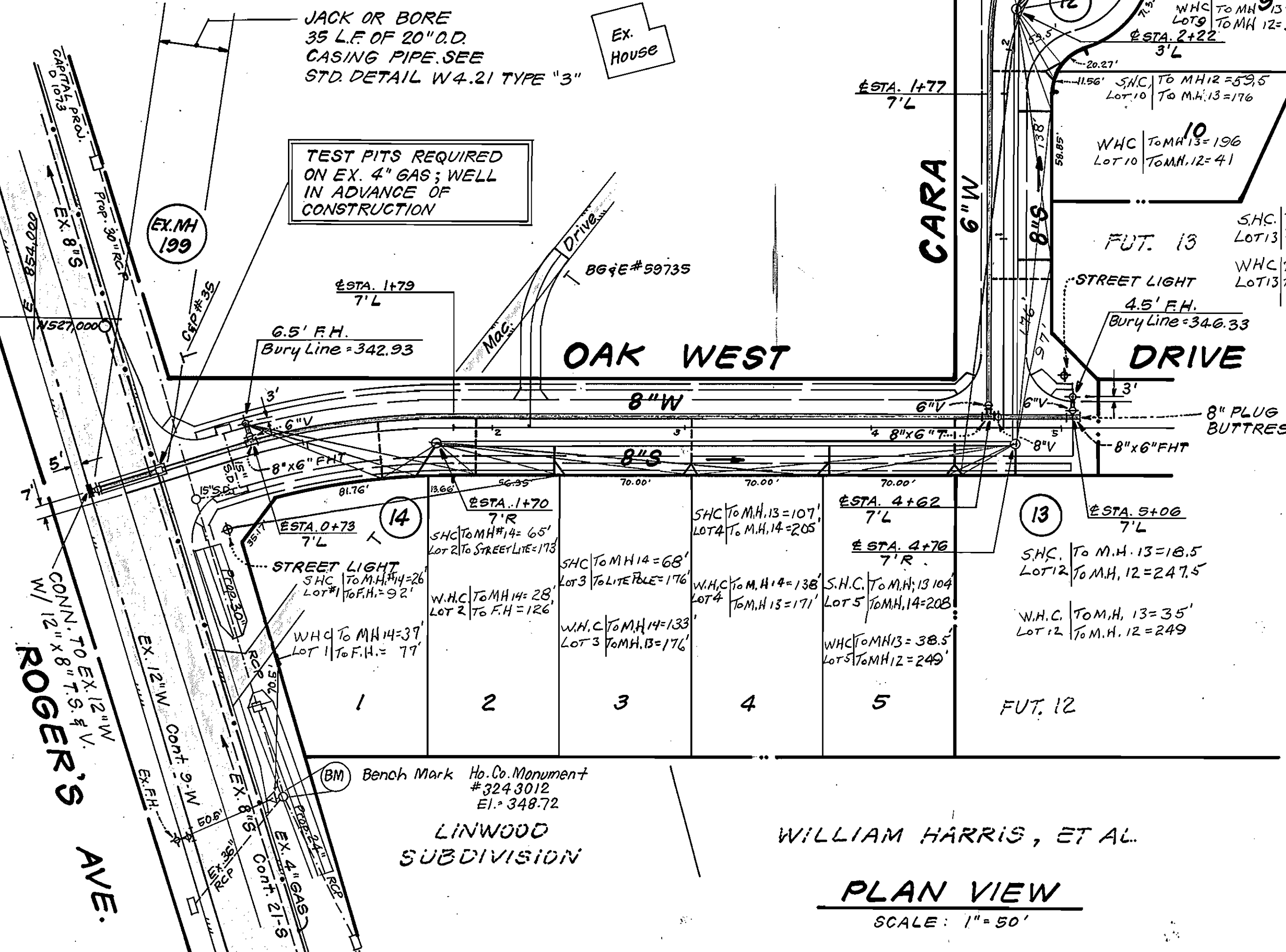
JACK OR BORE  
35' L.F. OF 20" O.D.  
CASING PIPE. SEE  
STD. DETAIL W4.21 TYPE "3"

TEST PITS REQUIRED  
ON EX. 4" GAS; WELL  
IN ADVANCE OF  
CONSTRUCTION

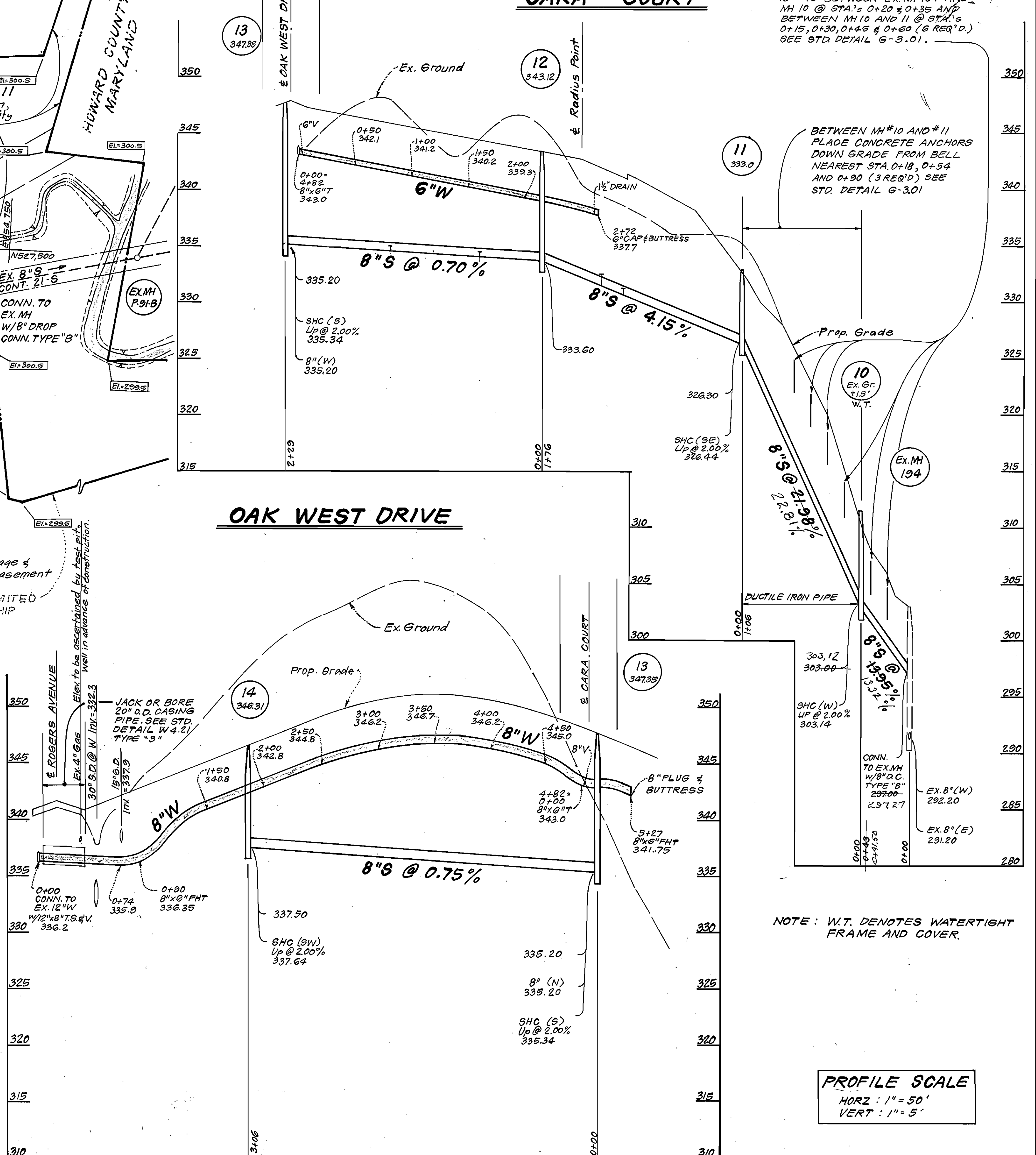
OAK WEST

DRIVE

OAK WEST DRIVE



PLAN VIEW  
SCALE: 1" = 50'



NOTE: W.T. DENOTES WATERTIGHT  
FRAME AND COVER.

PROFILE SCALE  
HORZ: 1" = 50'  
VERT: 1" = 5'

DEPARTMENT OF PUBLIC WORKS  
HOWARD COUNTY, MARYLAND

James M. Law 7/20/87  
DIRECTOR OF PUBLIC WORKS DATE

William E. Sackett 7-20-87  
CHIEF, BUREAU OF ENGINEERING & DATE

CLARK, FINEPROCK & SACKETT  
ENGINEERS, PLANNERS, SURVEYORS  
7135 MINSTREL WAY, COLUMBIA, MD 21045  
(BALT) 381-7500 (WASH) 621-8100



DES: J.T.R.			
DRN: V.L.M.			
CHK: J.T.R.			
DATE: 6-87			
BY: NO.		REVISION	
		DATE	

PLAN AND PROFILES OF  
WATER & SEWER MAINS

OAK WEST  
SECTION I AREA I, LOTS I THRU II  
2<sup>ND</sup> ELECTION DISTRICT  
CONTRACT 14-1613-D

SCALE  
AS SHOWN  
SHEET  
2 OF 2