

BENCH MARKS
 H.C.B.M. #3143012 Elev. 150.433
 Set in concrete walk, southeast of intersection Main St. and Old Columbia Pike, 5.4 west of G & E pole #478339.
 H.C. Mon. #3143002 Elev. 208.070
 3/4" Rebar, 0.8' below surface on top of back edge of stone wall, south of Columbia Rd, southeast of house #3782

RESTORATION SCHEDULE
 - Old Columbia Pike -
 W Sta 0+00 to 3+00 - Replace Bituminous Concrete Paving
 Note: Sediment control will include daily back filling of trenches.

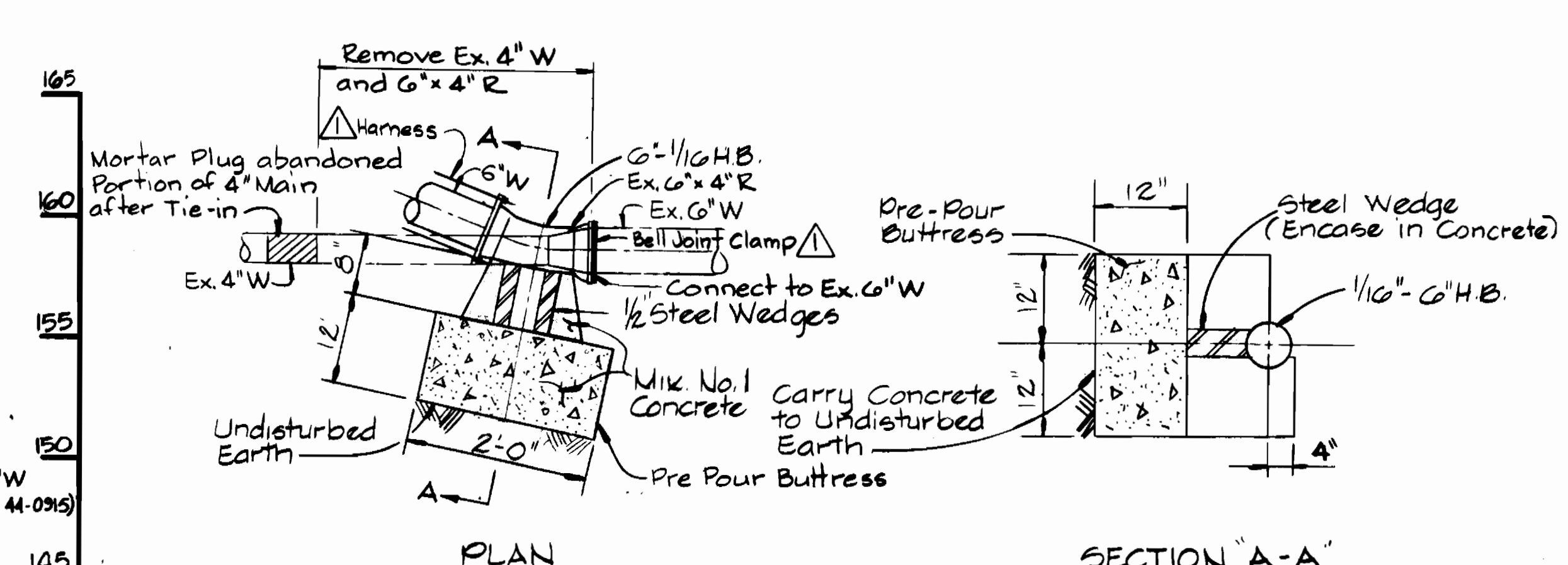
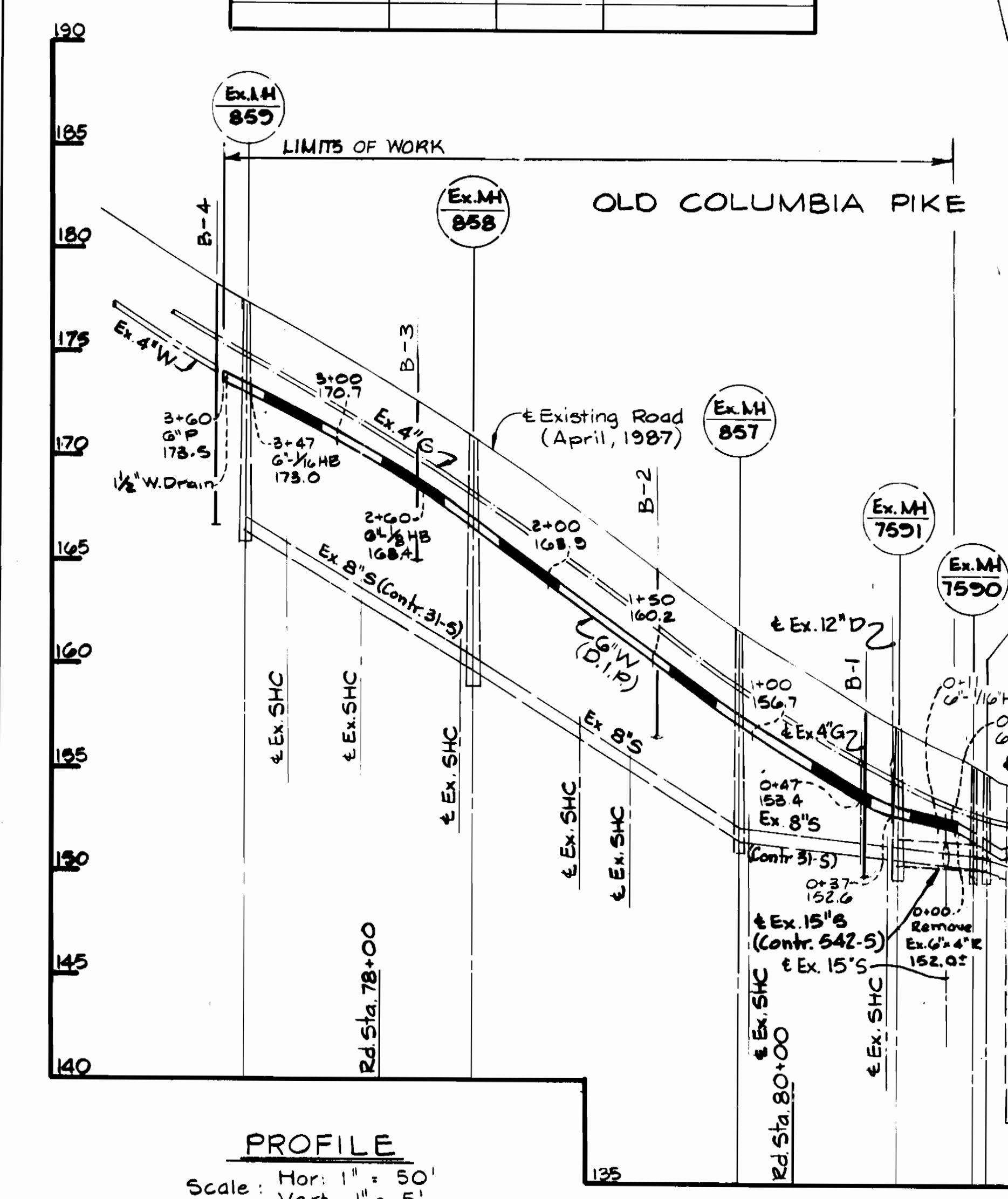
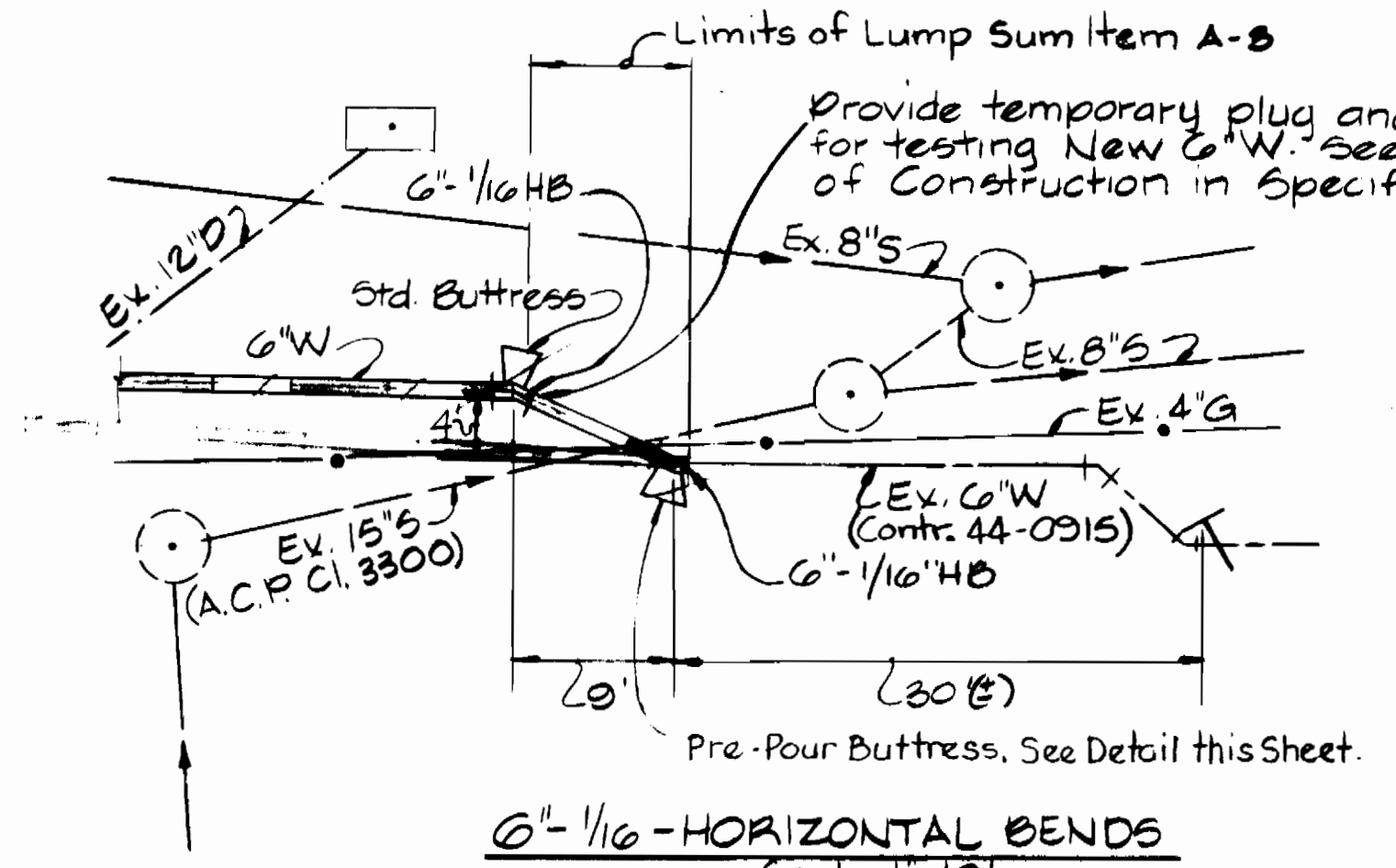
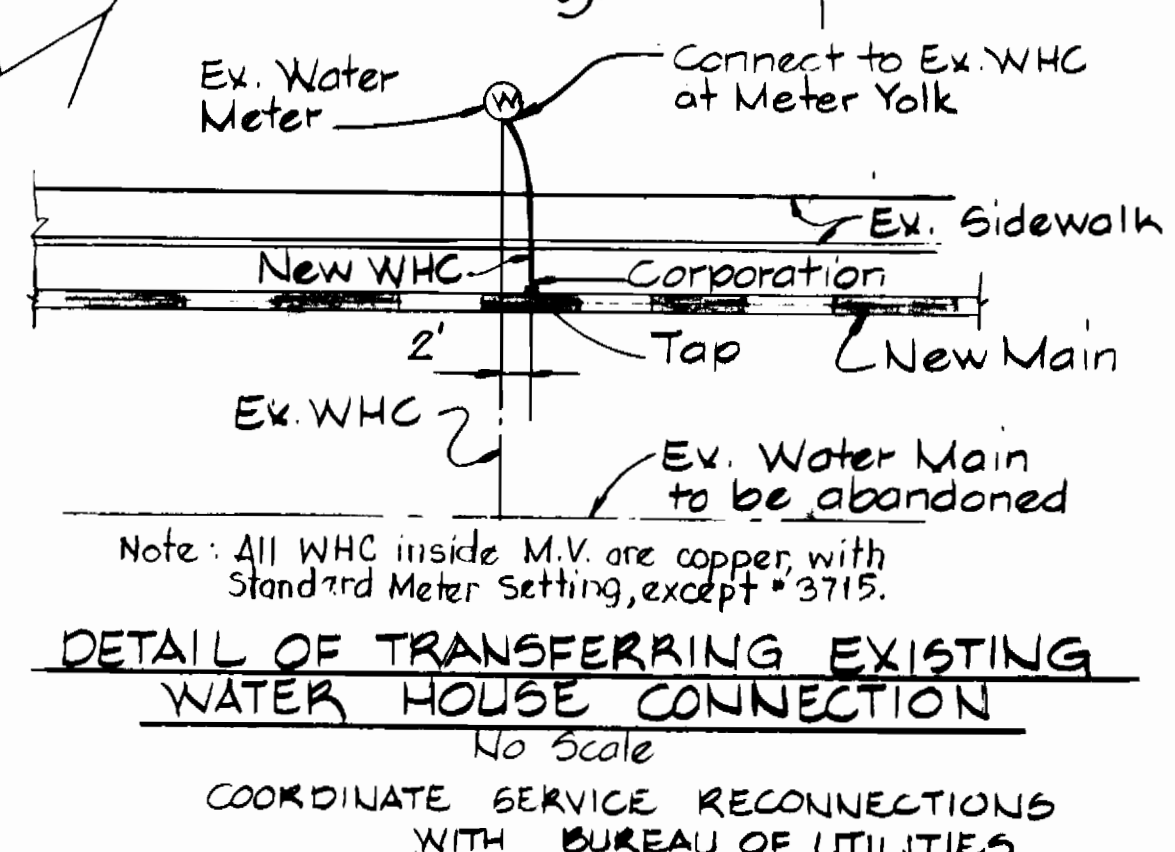
DRAINAGE AREA: Patapsco
 NO. OF SHC: N/A
 NO. OF WHC: 12
 WATER & SEWER CODE
 COUNTY USE
 WATER: F04
 SEWER: N/A

QUANTITIES

ITEM	BID	AS BUILT	MATERIAL/SUPPLIER
6" Water L.F.	360 LF	360 LF	
1" W.H. Connection L.F.	200 LF	210 LF	
1" W.H. Connection L.F.	20 LF	20 LF	

AT #3715 completely rebuild service and Meter Vault. (Meter to be furnished by County) LUMP SUM ITEM B-4

Note: Harness between G-1/16 Horizontal Bends. Provide Bell Joint Clamp on joint between G-1/16 Bend and Existing G"W.



- GENERAL NOTES**
- APPROXIMATE LOCATION OF EXISTING MAINS ARE SHOWN. THE CONTRACTOR SHALL TAKE ALL NECESSARY PRECAUTIONS TO PROTECT EXISTING MAINS AND SERVICES AND MAINTAIN UNINTERRUPTED SUPPLY. ANY DAMAGE INCURRED SHALL BE REPAIRED IMMEDIATELY TO THE SATISFACTION OF THE ENGINEER, AT THE CONTRACTOR'S EXPENSE.
 - ALL HORIZONTAL CONTROLS ARE BASED ON MARYLAND STATE COORDINATES.
 - ALL VERTICAL CONTROLS ARE BASED ON U.S.G.S. DATUM.
 - ALL PIPE ELEVATIONS SHOWN ARE INVERT ELEVATIONS.
 - CLEAR ALL UTILITIES BY A MINIMUM OF 6". CLEAR ALL POLES BY 2'-0" MINIMUM OR TUNNEL AS REQUIRED.
 - FOR DETAILS NOT SHOWN ON THE DRAWINGS, AND FOR MATERIALS AND CONSTRUCTION METHODS USE HOWARD COUNTY DESIGN MANUAL, VOLUME IV, STANDARD SPECIFICATIONS AND DETAILS FOR CONSTRUCTION. THE CONTRACTOR SHALL HAVE A COPY OF VOLUME IV ON THE JOB.
 - WHERE TEST PITS HAVE BEEN MADE ON EXISTING UTILITIES, THEY ARE NOTED BY THE SYMBOL [] AT THE LOCATION OF THE TEST PIT. A NOTE OR NOTES CONTAINING THE RESULTS OF THE TEST PIT OR PITS IS INCLUDED ON THE DRAWINGS. EXISTING UTILITIES IN THE VICINITY OF THE PROPOSED WORK FOR WHICH TEST PITS HAVE NOT BEEN DUG SHALL BE VERIFIED BY THE CONTRACTOR TO HIS OWN SATISFACTION. ANY DAMAGE TO EXISTING FACILITIES DUE TO THE CONTRACTOR'S NEGLIGENCE SHALL BE REPAIRED AT THE CONTRACTOR'S EXPENSE.
 - CONTRACTOR SHALL NOTIFY THE FOLLOWING UTILITIES OR AGENCIES AT LEAST FIVE WORKING DAYS BEFORE STARTING WORK SHOWN ON THESE PLANS:
 STATE HIGHWAY ADMINISTRATION - 531-5533
 BALTIMORE GAS & ELECTRIC CO. - CONTRACTOR SERVICES 850-4620
 BALTIMORE GAS & ELECTRIC CO. - UNDER GROUND DAMAGE CONTROL - 859-9004
 BALTIMORE GAS & ELECTRIC CO. - TROUBLE SHOOTING - 298-9001
 MISS UTILITY - 1 - 559-0100
 COLONIAL PIPELINE CO. - 795-1390
 C&P TELEPHONE CO. - 1-800-257-7777
 BUREAU OF UTILITIES, HOWARD COUNTY DEPARTMENT OF PUBLIC WORKS - 992-2366.
 - TREES AND SHRUBS ARE TO BE PROTECTED FROM DAMAGE TO MAXIMUM EXTENT. TREES AND SHRUBS LOCATED WITHIN THE CONSTRUCTION STRIP ARE NOT TO BE REMOVED OR DAMAGED BY THE CONTRACTOR.
 - CONTRACTOR SHALL REMOVE TREES, STUMPS AND ROOTS ALONG LINE OF EXCAVATION.
 - ALL WATER MAINS TO BE D.I.P. CLASS 52 UNLESS OTHERWISE NOTED.
 - TOPS OF ALL WATER MAINS TO HAVE A MINIMUM OF 3-1/2' COVER UNLESS OTHERWISE NOTED.
 - VALVES ADJACENT TO TEES SHALL BE STRAPPED TO TEES.
 - ALL FITTINGS SHALL BE BUTTRESSED OR ANCHORED WITH CONCRETE IN ACCORDANCE WITH THE STANDARD DETAILS UNLESS OTHERWISE PROVIDED FOR ON THE DRAWINGS.
 - FIRE HYDRANTS SHALL BE SET TO THE BURY LINE ELEVATIONS SHOWN ON THE DRAWINGS. ALL FIRE HYDRANTS SHALL BE STRAPPED AND BUTTRESSED WITH CONCRETE IN ACCORDANCE WITH STANDARD DETAILS. SOIL AROUND THE FIRE HYDRANT SHALL BE COMPACTED IN ACCORDANCE WITH SECTION 1003 THE STANDARD SPECIFICATIONS.
 - THE CONTRACTOR SHALL NOT OPERATE ANY WATER MAIN VALVES ON THE EXISTING WATER SYSTEM.
 - ALL WATER HOUSE CONNECTIONS SHALL BE FOR INSIDE METER SETTINGS, UNLESS OTHERWISE NOTED ON THE PLANS OR IN THE SPECIFICATIONS.
 - ALL W.H.C.'S. SHALL BE 3/4" UNLESS OTHERWISE NOTED.
 - ALL COPPER WATER HOUSE CONNECTIONS SHALL UTILIZE FLARED FITTINGS.

REVIEWED FOR HOWARD SOIL CONSERVATION DISTRICT AND MEETS TECHNICAL REQUIREMENT
 Signature: *John M. Helm* DATE: 8-27-87
 US. SOIL CONSERVATION SERVICE
 This Development Plan is approved for Soil Erosion and Sediment Control by the Howard County Conservation District
 APPROVED: *Stephen L. Hill* DATE: 8/26/87
 HOWARD CO.

Sediment Control Measures for this Contract will be implemented in accordance with Section 219 of the Standard Specifications.

DEPARTMENT OF PUBLIC WORKS HOWARD COUNTY, MARYLAND Director: <i>John M. Helm</i> DATE: 9/4/87 Chief, Bureau of Utilities: <i>Richard A. Minnick</i> DATE: 9/4/87	WHITMAN, REQUARDT AND ASSOCIATES ENGINEERS 2315 ST. PAUL ST. BALTIMORE, MARYLAND Chief, Utility Design Division: <i>Paul D. Quinn</i> DATE: 9/3/87	DES: S.J. DRN: Q.D.N. CHK: R.B.N. DATE: 11/23/87	VICINITY MAP PLAN & PROFILE OF WATER MAINS	OLD COLUMBIA PIKE 6" WATER MAIN ELECTION DISTRICT NO. 2 HOWARD COUNTY CONTRACT NO. 44-1604	SCALE AS SHOWN SHEET 1 OF 1
		RBN Provide Harnessing and Bell Joint Clamp. 11/23/87	600' SCALE MAP NO. 25 BLOCK NO. 13	25-522-891 26-642-868 FB*108 August 19, 1987	