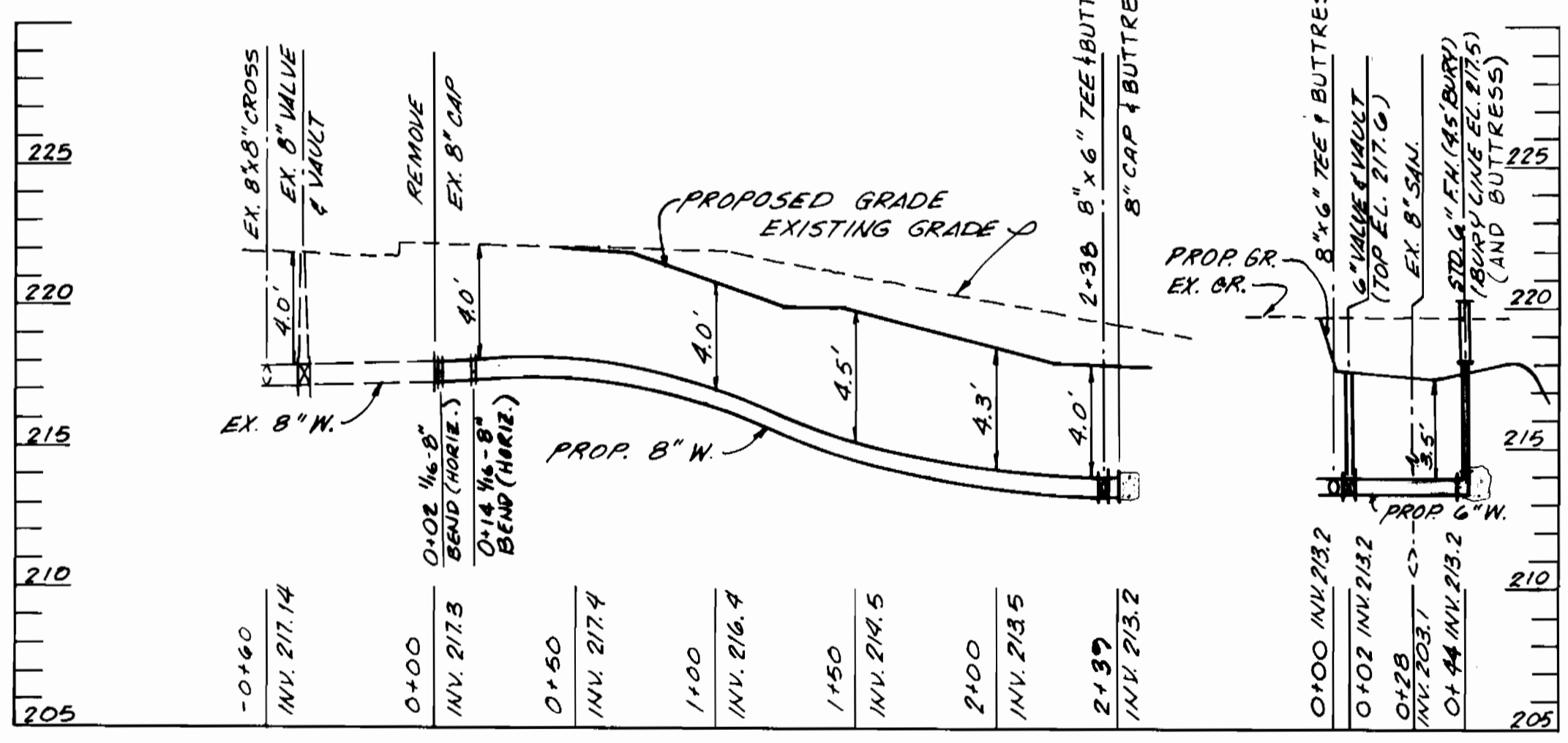


PLAN: SCALE: 1"=50'



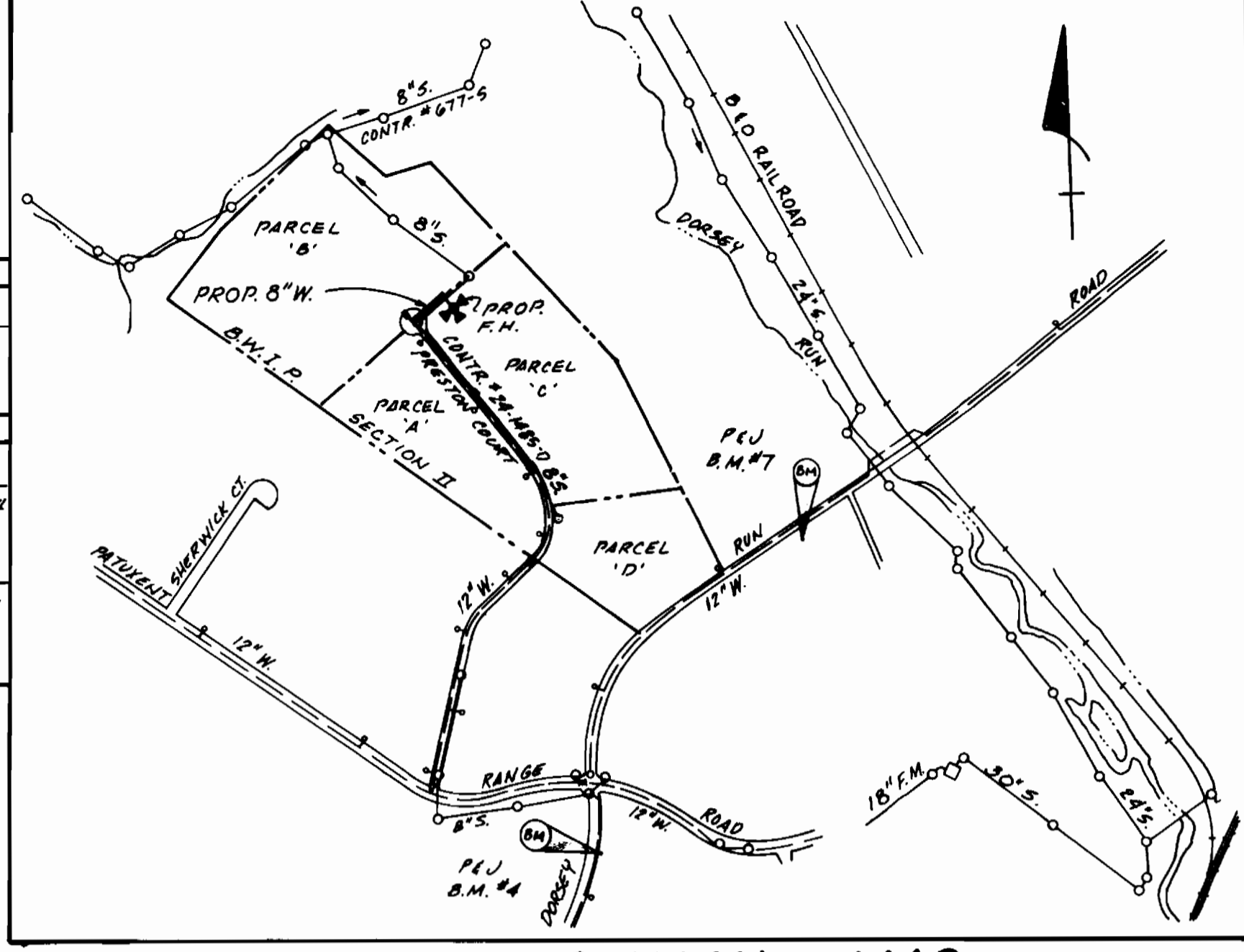
PROFILE SCALE: 1"=50' HOR. 1"=6' VERT.

QUANTITIES				
ITEM	UNIT	ESTIMATED	AS-BUILT	MATERIAL-SUPPLIER
8" D.I.P.	L.F.	239	240	U.S. Pipe Co.
6" D.I.P.	L.F.	44	44	"
6" VALVE & VAULT	EACH	1	1	"
6" STD. FIRE HYDRANT	EACH	1	1	"
8" CAP	EACH	1	1	"
1/16" B" BEND (HORIZ.)	EACH	2	2	"

TYPE OF BUILDINGS: ZONED M-2
OFFICE & WAREHOUSE
NUMBER OF LOTS: 2 PARCELS
NUMBER OF WATER HOUSE CONN.: 0
NUMBER OF SEWER HOUSE CONN.: 0
DRAINAGE AREA: DORSEY RUN

WATER & SEWER CODE
SEWER CODE: 3020000
WATER CODE: B 02

BENCH MARK
P.I.J. B.M. #4 ELEV. 211.74
R.R. SPIKE SET IN C&P #26, 81E
#263656, S. SIDE DORSEY RUN ROAD.
P.I.J. B.M. #7 ELEV. 177.244
R.R. SPIKE SET IN 61E #263650,
S. SIDE DORSEY RUN ROAD.



VICINITY MAP SCALE: 1"=600'

GENERAL NOTES

- APPROXIMATE LOCATION OF EXISTING MAINS ARE SHOWN. THE CONTRACTOR SHALL TAKE ALL NECESSARY PRECAUTIONS TO PROTECT EXISTING MAINS AND SERVICES AND MAINTAIN UNINTERRUPTED SUPPLY. ANY DAMAGE INCURRED SHALL BE REPAIRED IMMEDIATELY TO THE SATISFACTION OF THE ENGINEER, AT THE CONTRACTOR'S EXPENSE.
- ALL HORIZONTAL CONTROLS ARE BASED ON MARYLAND STATE COORDINATES.
- ALL VERTICAL CONTROLS ARE BASED ON U.S.G.S. DATUM.
- ALL PIPE ELEVATIONS SHOWN ARE INVERT ELEVATIONS.
- CLEAR ALL UTILITIES BY A MINIMUM OF 6". CLEAR ALL POLES BY 2'0" MINIMUM OR TUNNEL, AS REQUIRED. ANY COST INCURRED TO THE CONTRACTOR FOR TUNNELING OR BRACING AT POLES SHALL BE INCLUDED IN UNIT PRICES BID FOR CONSTRUCTION OF MAINS.
- FOR DETAILS NOT SHOWN ON DRAWINGS USE HOWARD COUNTY STANDARD DETAILS.
- FOR MATERIALS AND CONSTRUCTION METHODS USE HOWARD COUNTY STANDARD SPECIFICATIONS.
- CONTRACTOR SHALL LOCATE EXISTING UTILITIES A MINIMUM OF TWO (2) WEEKS IN ADVANCE OF CONSTRUCTION OPERATIONS IN THE VICINITY OF PROPOSED UTILITIES AT HIS OWN EXPENSE.
- CONTRACTOR SHALL NOTIFY THE FOLLOWING UTILITIES OR AGENCIES AT LEAST FIVE (5) WORKING DAYS BEFORE STARTING WORK SHOWN ON THESE PLANS:
 - STATE HIGHWAY ADMINISTRATION: 531-5533
 - BALTIMORE GAS AND ELECTRIC CO. - UNDERGROUND ELECTRIC DISTRIBUTION (CUSTOMER SERVICE): 685-0123
 - BALTIMORE GAS AND ELECTRIC CO. - UNDERGROUND GAS DISTRIBUTION (CUSTOMER SERVICE): 685-0123
 - ENGINEERING "DAMAGE CONTROL": 234-5621
 - "MISS UTILITY": 1-800-257-7777
 - CHESAPEAKE AND POTOMAC (C&P) TELEPHONE COMPANY: 725-9976
 - AMERICAN TELEPHONE AND TELEGRAPH-CABLE LOCATION DIVISION: 393-3553
 - COLONIAL PIPELINE COMPANY: 795-1390
 - BUREAU OF UTILITIES HOWARD COUNTY: 992-2366
- PLACE REGULATION "MEN WORKING" AND WARNING SIGNS AS REQUIRED TO COMPLY WITH MARYLAND STATE HIGHWAY ADMINISTRATION MANUAL OF TRAFFIC CONTROL FOR HIGHWAY CONSTRUCTION AND MAINTENANCE OPERATIONS.
- ALL WATER MAINS TO BE C.I.P. OR D.I.P., UNLESS OTHERWISE NOTED.
- TOP OF ALL WATER MAINS TO HAVE A MINIMUM OF 3 1/2' OF COVER, UNLESS OTHERWISE NOTED.
- VALVES ADJACENT TO TEES SHALL BE STRAPPED TO TEES.
- BLOCK ALL FITTINGS WITH CONCRETE.
- BURY LINE ELEVATIONS ON FIRE HYDRANTS SHALL BE SET TO THE ELEVATIONS SHOWN ON THESE DRAWINGS. ALL FIRE HYDRANTS SHALL BE STRAPPED AND BUTTRESSED WITH CONCRETE IN ACCORDANCE WITH SEC. 10.03 & 10.08 OF THE STANDARD SPECIFICATIONS.
- THE CONTRACTOR SHALL NOT OPERATE ANY WATER MAIN VALVES ON THE EXISTING SYSTEM.
- WATER MAINS AND WATER HOUSE CONNECTIONS MUST BE PLACED SO AS TO HAVE AT LEAST 12" CLEARANCE FROM THE SANITARY SEWER AS THEY PASS ABOVE IT.

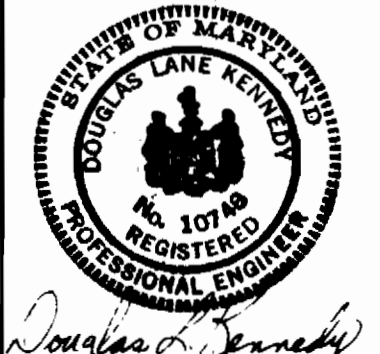
SEDIMENT CONTROL
SEDIMENT CONTROL MEASURES FOR THIS CONTRACT SHALL BE IMPLEMENTED IN ACCORDANCE WITH SITE DEVELOPMENT PLAN S.D.P. 87-66

REVIEWED FOR HOWARD SOIL CONSERVATION DISTRICT AND MEETS TECHNICAL REQUIREMENTS.
Signature: James M. Helm
Date: 1-27-87
U.S. SOIL CONSERVATION SERVICE

THIS DEVELOPMENT PLAN IS APPROVED FOR SOIL EROSION AND SEDIMENT CONTROL BY THE HOWARD COUNTY CONSERVATION DISTRICT.
Approved: Stephen L. Helm
Date: 1/27/87
HOWARD SOIL CONSERVATION DISTRICT

DEPARTMENT OF PUBLIC WORKS
HOWARD COUNTY, MARYLAND
Director of Public Works - DATE: 2-3-87
Chief - Bureau of Engineering - DATE: 4-1-87
Chief - Bureau of Utilities - DATE: 1-30-87
Chief - Land Development Division - DATE: 1-30-87

KCW CONSULTANTS, INC.
CIVIL ENGINEERS-LAND SURVEYORS
1777 REISTERSTOWN ROAD
COMMERCENTRE, SUITE 175
BALTIMORE, MARYLAND 21208
(301) 484-0963



DES. S.O.S.				
DRN. R.K.A.				
CHK. D.L.K.				
DATE: 11-10-86	NO.	REVISION	BY	DATE

WATER
PLAN & PROFILE
CONTRACT NO. 44-1598-D

BALTIMORE WASHINGTON INDUSTRIAL PARK
SECTION II
PARCELS 'B' & 'C'
6th. ELECTION DISTRICT
HOWARD COUNTY, MARYLAND

SCALE AS SHOWN
SHEET 1 OF 1