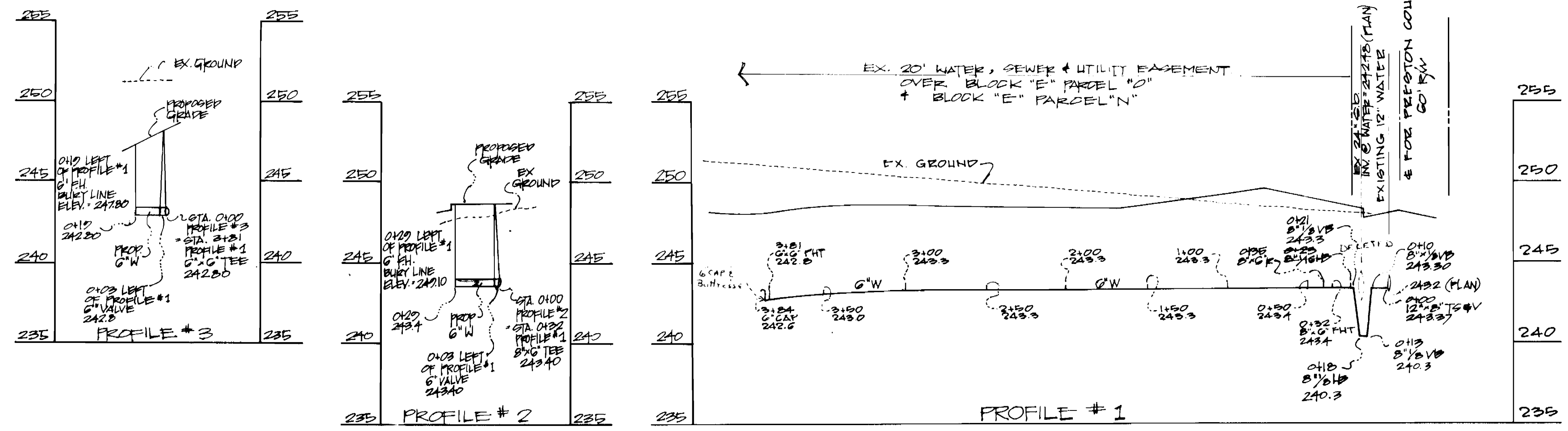


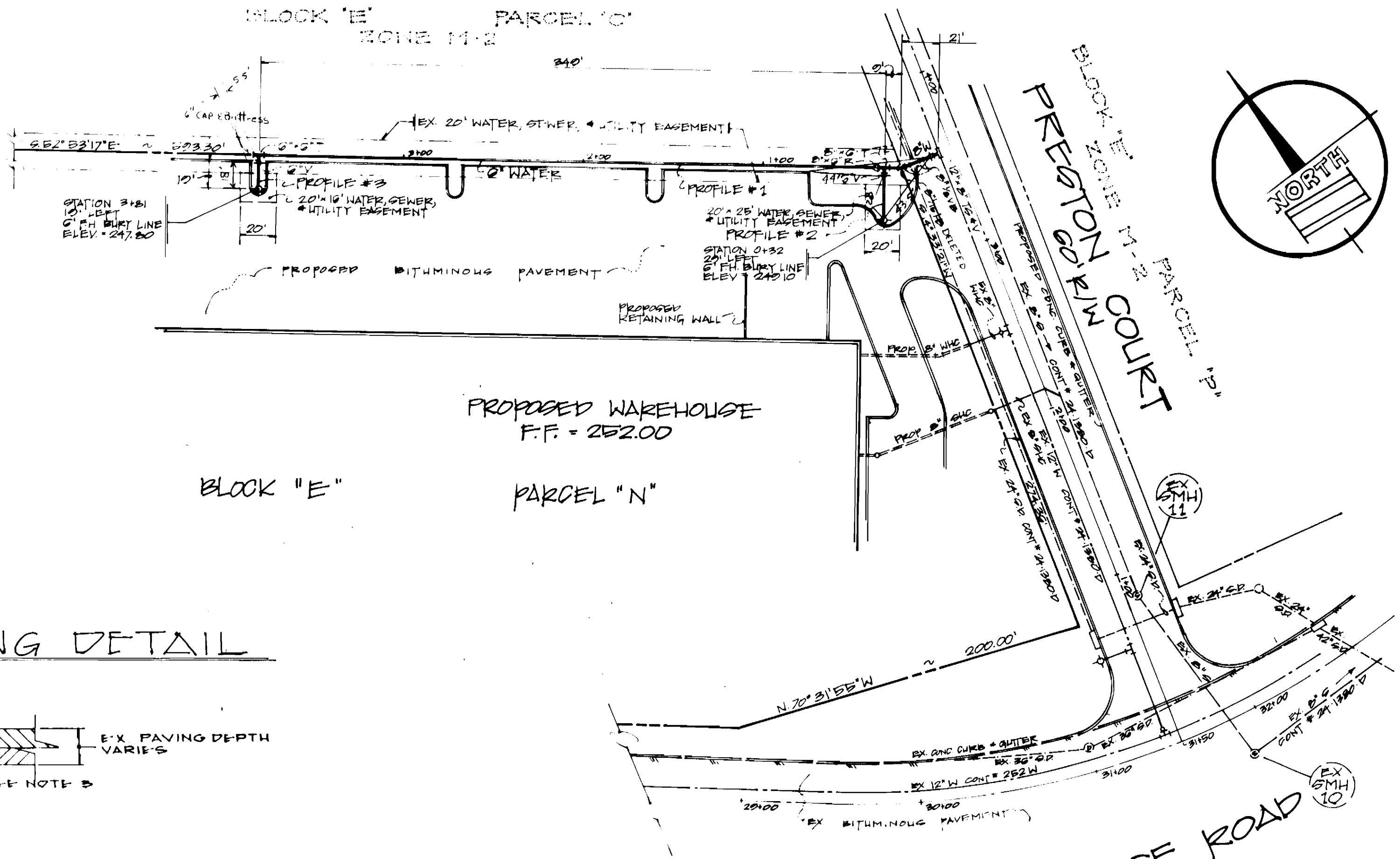
VICINITY MAP
SCALE: 1" = 600'

THE EX. UNDERGROUND UTILITIES SHOWN HERE-ON ARE BASED ON INFORMATION AVAILABLE FROM SURVEYS AND RECORDS. THE CONTRACTOR SHALL BE RESPONSIBLE FOR DETERMINING THE EXACT LOCATION OF ALL UTILITIES BEFORE COMMENCING WORK AND FOR ANY DAMAGES WHICH MIGHT OCCUR BY HIS FAILURE TO LOCATE OR PRESERVE THESE UNDERGROUND UTILITIES. IF DURING CONSTRUCTION OPERATION THE CONTRACTOR SHOULD ENCOUNTER UTILITIES OTHER THAN THOSE SHOWN ON THE PLANS, HE SHALL IMMEDIATELY NOTIFY THE ENGINEER AND TAKE ALL NECESSARY AND PROPER STEPS TO PROTECT THE FACILITY AND ASSURE THE CONTINUANCE OF SERVICE.

ITEM	QUANTITY	QUANTITY
2" WATER	CL 52 DIT - ATLANTIC SH&S	25' L.F.
6" WATER	A-423 - MUELLER	25' L.F.
6" VALVE	H. G. S. T. S. & MUELLER - MUELLER	1
2" CAP	CL 250 - UNION FOUNDRY	1
6" VALVE	AWWA S-500 MUELLER	1
2" CAP	CL 250 UNION FOUNDRY	1
6" VALVE	DELETED	1

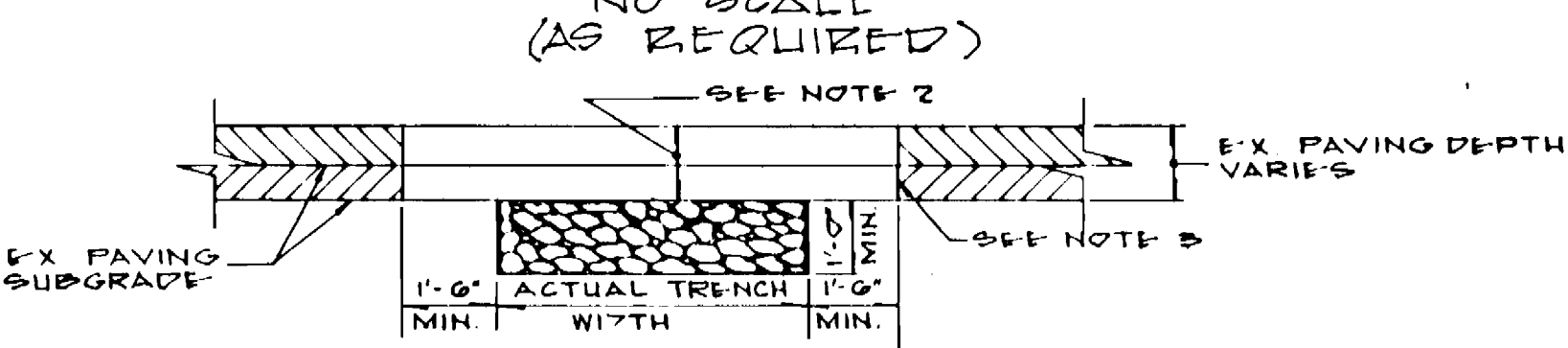


PROFILE SCALE = HORIZONTAL: 1" = 50'
VERTICAL: 1" = 5'



- ### GENERAL NOTES
- APPROXIMATE LOCATION OF EX MAIN ARE SHOWN. THE CONTRACTOR SHALL TAKE ALL NECESSARY PRECAUTIONS TO PROTECT EX MAINS AND SERVICES AND MAINTAIN UNINTERRUPTED SUPPLY. ANY DAMAGE INCURRED SHALL BE REPAIRED IMMEDIATELY.
 - ALL PIPE ELEVATIONS SHOWN ARE INVERT OR ELEVATIONS. THE CONTRACTOR SHALL LOCATE EX UTILITIES A MINIMUM OF TWO WEEKS IN ADVANCE OF CONSTRUCTION OPERATIONS IN VICINITY OF UTILITIES.
 - FOR ALL STANDARD DETAILS SEE STANDARDS BOUND IN SPECIFICATIONS.
 - ALL WATER MAINS SHALL HAVE A MINIMUM OF 36" COVER.
 - BLOCK ALL FITTINGS WITH CONCRETE, SEE STANDARDS BOUND IN SPECIFICATIONS.
 - BURY LINE ELEVATIONS ON FIRE HYDRANTS SHALL BE SET TO THE ELEVATIONS SHOWN ON THE DRAWINGS OR AS DIRECTED BY THE ENGINEER IN THE FIELD.
 - ALL FIRE HYDRANTS SHALL BE STRAPPED AND BUTTRESSED IN ACCORDANCE WITH STANDARD DETAILS.
 - COST OF STRAPPING FIRE HYDRANTS AND VALVES TO TEES TO BE INCLUDED IN PRICE BID FOR FURNISHING AND INSTALLING FIRE HYDRANTS.
 - CLEAR ALL UTILITIES BY A MINIMUM OF 6', CLEAR ALL POLES BY A MINIMUM OF 2'-0" OR TUNNEL AS REQUIRED.
 - ALL HORIZONTAL AND VERTICAL CONTROLS ARE IN HOWARD COUNTY DATUM AS EXTENDED FROM W 850.
 - TIME OF CONNECTION TO EX. B.W. TO BE AS DIRECTED BY HOWARD COUNTY DEPARTMENT OF PUBLIC WORKS. IT MAY BE ANY TIME ON ANY DAY OR NIGHT.
 - SEDIMENT CONTROL MEASURES FOR THIS CONTRACT WILL BE IMPLEMENTED IN ACCORDANCE WITH SECTION 210 OF THE STANDARD SPECIFICATIONS AND SPP - 86 252.
 - SERVICE CHAINS ARE TO HAVE STAINLESS STEEL STRAPS.
 - METER SETTING FOR PROPOSED WAREHOUSE TO BE AS PER HOWARD CO STANDARD DETAIL W 341. (NEW DETAIL)

PAVEMENT PATCHING DETAIL



- CLEAN AND WET EDGES OF CUT BEFORE PLACING CONCRETE.
- PAVEMENT PATCH MATERIALS AND COURSE THICKNESS SHALL BE EQUAL TO EX. PAVING SECTION OR AS APPROVED BY D.P.W. THE MINIMUM PAVING PATCH SHALL CONSIST OF 3" BITUMINOUS CONC SURFACE MATERIAL PLACED IN TWO 1 1/2" COURSES. BITUMINOUS CONC. BASE MATERIAL, WHEN PLACED, SHALL NOT EXCEED 3" THICKNESS PER COURSE. STONE BASE MATERIAL SHALL NOT EXCEED 5" THICKNESS PER COURSE.
- PLACE HOT LIQUID ASPHALT (MD-1K OR AS APPROVED BY D.P.W.) ALONG VERTICAL FACE OF EX. PAVING PRIOR TO PLACING NEW MATERIAL TO INSURE CONTINUOUS BOND. UPON COMPLETION OF PAVING PATCH THE HOT LIQUID ASPHALT SHALL BE BRUSHED INTO THE JOINT BETWEEN OLD AND NEW PAVING SURFACES TO PREVENT EXCESS LIQUID ASPHALT FROM BEING TRACKED BY TRAFFIC.

DEVELOPER'S CERTIFICATE

I CERTIFY THAT ALL DEVELOPMENT AND/OR CONSTRUCTION WILL BE DONE ACCORDING TO THIS PLAN FOR DEVELOPMENT AND EROSION AND SEDIMENT CONTROL. I AUTHORIZE PERIODIC ON-SITE INSPECTION BY THE HOWARD SOIL CONSERVATION DISTRICT, OR THEIR AUTHORIZED AGENT, AS ARE DEEMED NECESSARY. DEVIATION FROM THIS PLAN WILL NOT BE MADE UNLESS AUTHORIZED BY THE HOWARD SOIL CONSERVATION DISTRICT.

Charles S. Shapiro
CHARLES S. SHAPIRO
12-10-86
DATE

ENGINEER'S CERTIFICATE

I CERTIFY THAT THIS PLAN FOR SOIL EROSION AND SEDIMENT CONTROL REPRESENTS A PRACTICAL AND WORKABLE PLAN BASED ON MY PERSONAL KNOWLEDGE OF THE SITE CONDITIONS. IT WAS PREPARED IN ACCORDANCE WITH THE REQUIREMENTS OF THE HOWARD SOIL CONSERVATION DISTRICT.

William A. Joyce, P.E.
WILLIAM A. JOYCE, P.E.
12-26-86
DATE

PLAN SCALE: 1" = 50'

SOP-86-252 TAX MAP 48, PLAT # 6523

REVIEWED FOR HOWARD S.O.D. AND METS TECHNICAL REQUIREMENTS

James M. Auld 1-6-87
U.S. SOIL CONSERVATION SERVICE DATE
THIS DEVELOPMENT IS APPROVED SOIL EROSION AND SEDIMENT CONTROL BY THE HOWARD SOIL CONSERVATION DISTRICT

HOWARD SOIL CONSERVATION DISTRICT DATE

DEPARTMENT OF PUBLIC WORKS
HOWARD COUNTY, MARYLAND

Robert M. Brainer 1-12-87
DIRECTOR OF PUBLIC WORKS DATE
CHIEF, BUREAU OF UTILITIES DATE

William A. Joyce 1-13-87
CHIEF, BUREAU OF ENGINEERING DATE

APPROVED HOWARD COUNTY OFFICE OF PLANNING & ZONING

PLANNING DIRECTOR DATE

CHIEF, DIVISION OF LAND DEVELOPMENT/ZONING ADMIN.

JOYCE ENGINEERING CORPORATION
PROFESSIONAL ENGINEERING, LAND PLANNING, SURVEYING
11033-C BALTIMORE AVE. BELTSVILLE, MD 20706 (301) 595-4353

CONTRACT NO. 44-1502-D

BLOCK "E" PARCEL "N"
BALTIMORE-WASHINGTON INDUSTRIAL PARK
TAX MAP 48
HOWARD COUNTY, MARYLAND

ELECTION DISTRICT GUILFORD NO. 6

DRAWING NO. 1

SCALE AS SHOWN

DESIGN BY PRAET APP/TAM