
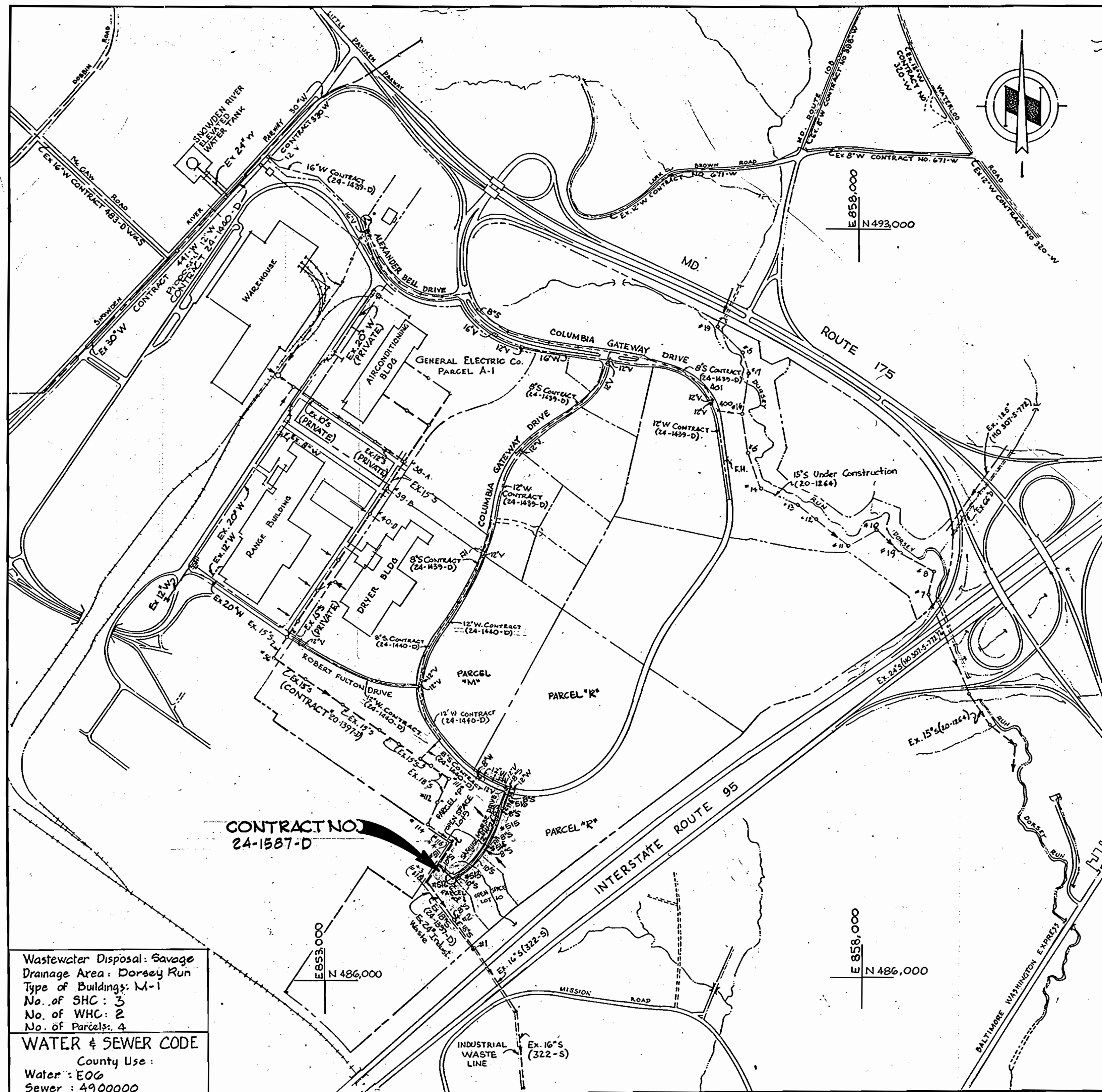


GENERAL NOTES

- APPROXIMATE LOCATION OF EXISTING MAINS ARE SHOWN. THE CONTRACTOR SHALL TAKE ALL NECESSARY PRECAUTIONS TO PROTECT EXISTING MAINS AND SERVICES AND MAINTAIN UNINTERRUPTED SUPPLY. ANY DAMAGE INCURRED SHALL BE REPAIRED IMMEDIATELY TO THE SATISFACTION OF THE ENGINEER, AT THE CONTRACTOR'S EXPENSE.
- ALL HORIZONTAL CONTROLS ARE BASED ON MARYLAND STATE COORDINATES.
- ALL VERTICAL CONTROLS ARE BASED ON U.S.G.S. DATUM.
- ALL PIPE ELEVATIONS SHOWN ARE INVERT ELEVATIONS.
- CLEAR ALL UTILITIES BY A MINIMUM OF 6". CLEAR ALL POLES BY 2'-0" MINIMUM OR TUNNEL AS REQUIRED.
- FOR DETAILS NOT SHOWN ON THE DRAWINGS, AND FOR MATERIALS AND CONSTRUCTION METHODS USE HOWARD COUNTY DESIGN MANUAL, VOLUME IV, STANDARD SPECIFICATIONS AND DETAILS FOR CONSTRUCTION. THE CONTRACTOR SHALL HAVE A COPY OF VOLUME IV ON THE JOB.
- WHERE TEST PITS HAVE BEEN MADE ON EXISTING UTILITIES, THEY ARE NOTED BY THE SYMBOL  AT THE LOCATION OF THE TEST PIT. A NOTE OR NOTES CONTAINING THE RESULTS OF THE TEST PIT OR PITS IS INCLUDED ON THE DRAWINGS. EXISTING UTILITIES IN THE VICINITY OF THE PROPOSED WORK FOR WHICH TEST PITS HAVE NOT BEEN DUG SHALL BE VERIFIED BY THE CONTRACTOR TO HIS OWN SATISFACTION. ANY DAMAGE TO EXISTING FACILITIES DUE TO THE CONTRACTOR'S NEGLIGENCE SHALL BE REPAIRED AT THE CONTRACTOR'S EXPENSE.
- CONTRACTOR SHALL NOTIFY THE FOLLOWING UTILITIES OR AGENCIES AT LEAST FIVE WORKING DAYS BEFORE STARTING WORK SHOWN ON THESE PLANS:
 - STATE HIGHWAY ADMINISTRATION - 531-5533
 - BALTIMORE GAS AND ELECTRIC CO. - CONTRACTOR SERVICES 850-4620
 - BALTIMORE GAS AND ELECTRIC CO. - UNDER GROUND DAMAGE CONTROL - 859-9004
 - BALTIMORE GAS AND ELECTRIC CO. - TROUBLE SHOOTING - 298-9001
 - MISS UTILITY - 1 - 559-0100
 - COLONIAL PIPELINE CO. - 795-1390 / C&P Telephone Co. 1-800-257-7777
 - BUREAU OF UTILITIES, HOWARD COUNTY DEPARTMENT OF PUBLIC WORKS - 992-2366
- TREES AND SHRUBS ARE TO BE PROTECTED FROM DAMAGE TO MAXIMUM EXTENT. TREES AND SHRUBS LOCATED WITHIN THE CONSTRUCTION STRIP ARE NOT TO BE REMOVED OR DAMAGED BY THE CONTRACTOR.
- CONTRACTOR SHALL REMOVE TREES, STUMPS AND ROOTS ALONG LINE OF EXCAVATION.
- ALL WATER MAINS TO BE D.I.P. CLASS 52 UNLESS OTHERWISE NOTED.
- TOPS OF ALL WATER MAINS TO HAVE A MINIMUM OF 3-1/2' COVER UNLESS OTHERWISE NOTED.
- VALVES ADJACENT TO TEES SHALL BE STRAPPED TO TEES.
- ALL FITTINGS SHALL BE BUTTRESSED OR ANCHORED WITH CONCRETE IN ACCORDANCE WITH THE STANDARD DETAILS UNLESS OTHERWISE PROVIDED FOR ON THE DRAWINGS.
- FIRE HYDRANTS SHALL BE SET TO THE BURY LINE ELEVATIONS SHOWN ON THE DRAWINGS. ALL FIRE HYDRANTS SHALL BE STRAPPED AND BUTTRESSED WITH CONCRETE IN ACCORDANCE WITH STANDARD DETAILS. SOIL AROUND THE FIRE HYDRANT SHALL BE COMPACTED IN ACCORDANCE WITH SECTION 1003 THE STANDARD SPECIFICATIONS.
- THE CONTRACTOR SHALL NOT OPERATE ANY WATER MAIN VALVES ON THE EXISTING WATER SYSTEM.
- ALL WATER HOUSE CONNECTIONS SHALL BE FOR INSIDE HETER SETTINGS, UNLESS OTHERWISE NOTED ON THE PLANS OR IN THE SPECIFICATIONS.
- ALL W.H.C.'S. SHALL BE 3/4" UNLESS OTHERWISE NOTED.
- ALL COPPER WATER HOUSE CONNECTIONS SHALL UTILIZE FLARED FITTINGS.
- ALL SEWER MAINS SHALL BE C.S.P.X., D.I.P., V.C.P.X., A.C.P. CLASS 2400 OR P.V.C. UNLESS OTHERWISE NOTED.
- THE CONTRACTOR SHALL PROVIDE A JOINT IN ALL SEWER MAINS WITHIN 2'-0" OF EXTERIOR MANHOLE WALL.
- ALL MANHOLES SHALL BE 4'-0" INSIDE DIAMETER UNLESS OTHERWISE NOTED.
- MANHOLES SHOWN WITH 12" AND 16" WALLS ARE FOR BRICK MANHOLES ONLY.
- MANHOLES DESIGNATED W.T. IN PLAN AND PROFILE SHALL HAVE WATERTIGHT FRAME AND COVERS. STANDARD DETAIL GS.52 WHERE WATERTIGHT MANHOLE FRAME AND COVER IS USED, SET TOP OF FRAME 0.5' ABOVE FINISHED GRADE UNLESS OTHERWISE NOTED ON THE DRAWINGS.
- STRAW BALE DIKE AND SILT FENCE ARE INTERCHANGEABLE.
- For manholes in open space or outfall set top of frame 1.5' above finished grade unless otherwise noted on the drawings.

QUANTITIES			
ITEM	BID	AS BUILT	MATERIAL/SUPPLIER
12" Water L.F.	1,450		A4P SOUTHERN
8" Water L.F.	100		"
6" Water L.F.	120		"
12" Valve Ea.	2		"
8" Valve Ea.	2		"
6" V(Excluding FH)	-		"
Fire Hydrant Ea.	4		"
10" Sewer L.F.	600		SORENSEN PVC
8" Sewer L.F.	750		SORENSEN PVC
Manholes Ea.	6		FLC 1517 ATLANTIC CONC. PRODUCTS, INC.



Wastewater Disposal: Savage
 Drainage Area: Dorsey Run
 Type of Buildings: M-1
 No. of SHC: 3
 No. of WHC: 2
 No. of Parcels: 4

WATER & SEWER CODE
 County Use:
 Water: EOG
 Sewer: 490000

CONTRACT NO. 24-1587-D

COLUMBIA GATEWAY

HOWARD COUNTY, MARYLAND

DEPARTMENT OF PUBLIC WORKS

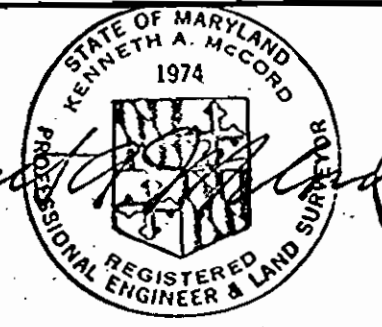
REVIEWED FOR HOWARD SOIL CONSERVATION DISTRICT AND MEETS TECHNICAL REQUIREMENT
 SIGNATURE: *[Signature]* DATE: 2-4-87
 U.S. SOIL CONSERVATION SERVICE

This Development Plan is approved for Soil Erosion and Sediment Control by the Howard Soil Conservation District.
 APPROVED: *[Signature]* DATE: 4/1/87
 HOWARD S.C.D.

Sediment Control Measures for this Contract will be implemented in accordance with Section 219 of the Standard Specifications and Road Construction Drawings F-87-63

DEPARTMENT OF PUBLIC WORKS
 HOWARD COUNTY, MARYLAND
 DIRECTOR OF PUBLIC WORKS - DATE: 2-9-87
 CHIEF - BUREAU OF UTILITIES - DATE: 2-6-87

WHITMAN, REQUARDT AND ASSOCIATES ENGINEERS
 2315 ST. PAUL ST. BALTIMORE, MARYLAND

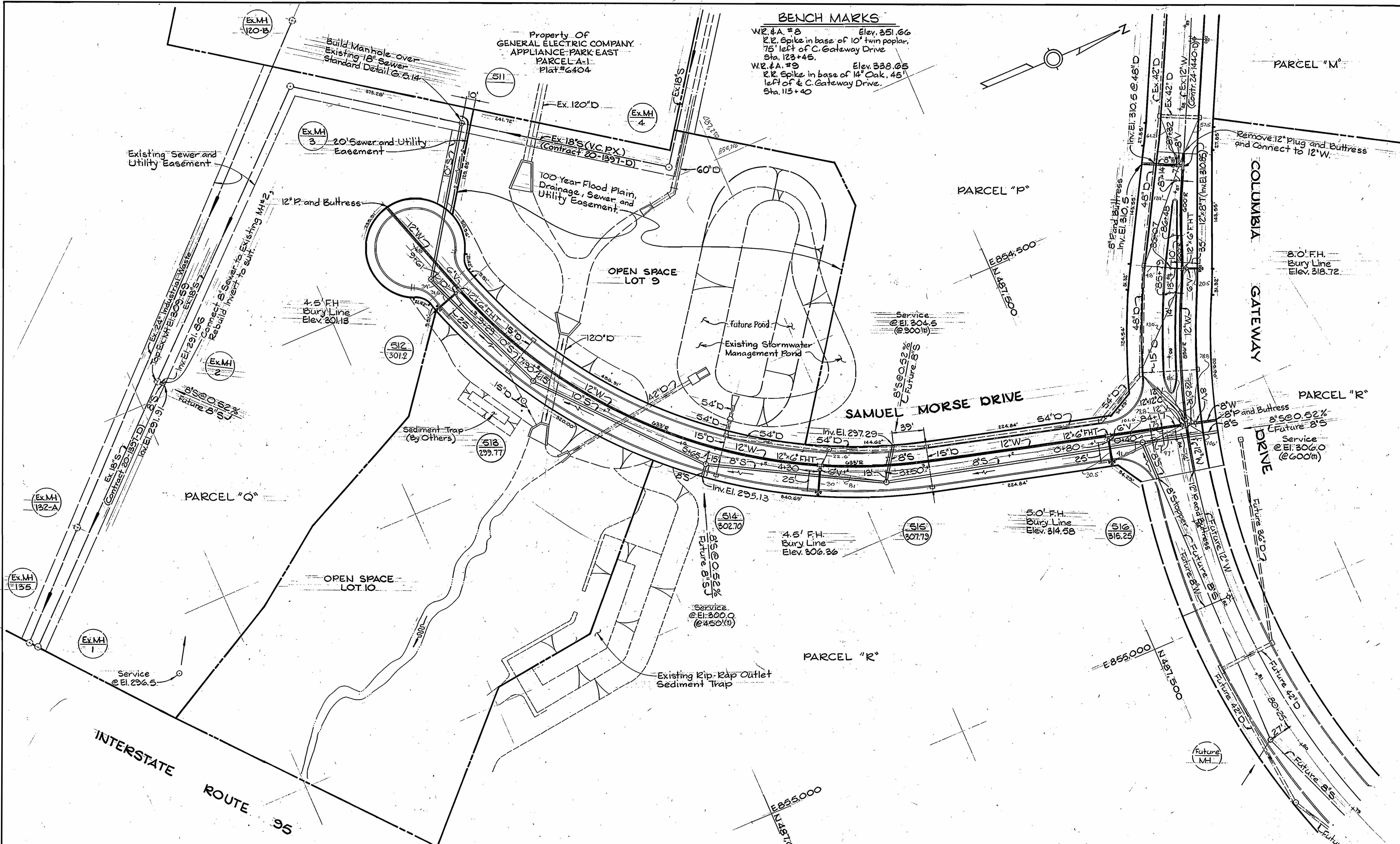


DES: S.U.					
DRW: Q.D.N.					
CHK: R.B.N.					
DATE:	BY:	NO.	REVISION	DATE:	

VICINITY MAP AND GENERAL NOTES

COLUMBIA GATEWAY
 PARCELS P THROUGH R AND LOTS 9 AND 10
 A RESUBDIVISION OF PARCEL O.
 ELECTION DISTRICT NO.6
 CONTRACT NO. 24-1587-D

SCALE 1"=600'
 SHEET 1 OF 3

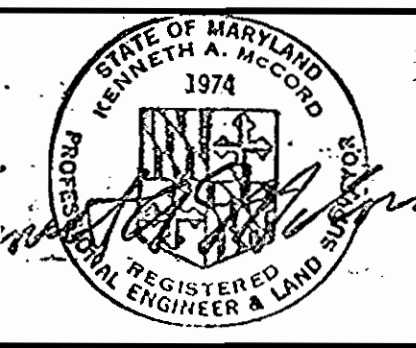


BENCH MARKS
 W.R.#A.#8 Elev. 351.66
 R.R. Spike in base of 10' twin poplar,
 75' left of C. Gateway Drive
 Sta. 123+45.
 W.R.#A.#9 Elev. 338.65
 R.R. Spike in base of 14' Oak, 45'
 left of C. Gateway Drive.
 Sta. 115+40

PLAN
 Scale: 1"=50'

DEPARTMENT OF PUBLIC WORKS
 HOWARD COUNTY, MARYLAND
 Director of Public Works - DATE
 Chief - Bureau of Utilities - DATE

WHITMAN, REQUARDT
 AND ASSOCIATES
 ENGINEERS
 2315 ST. PAUL ST.
 BALTIMORE, MARYLAND



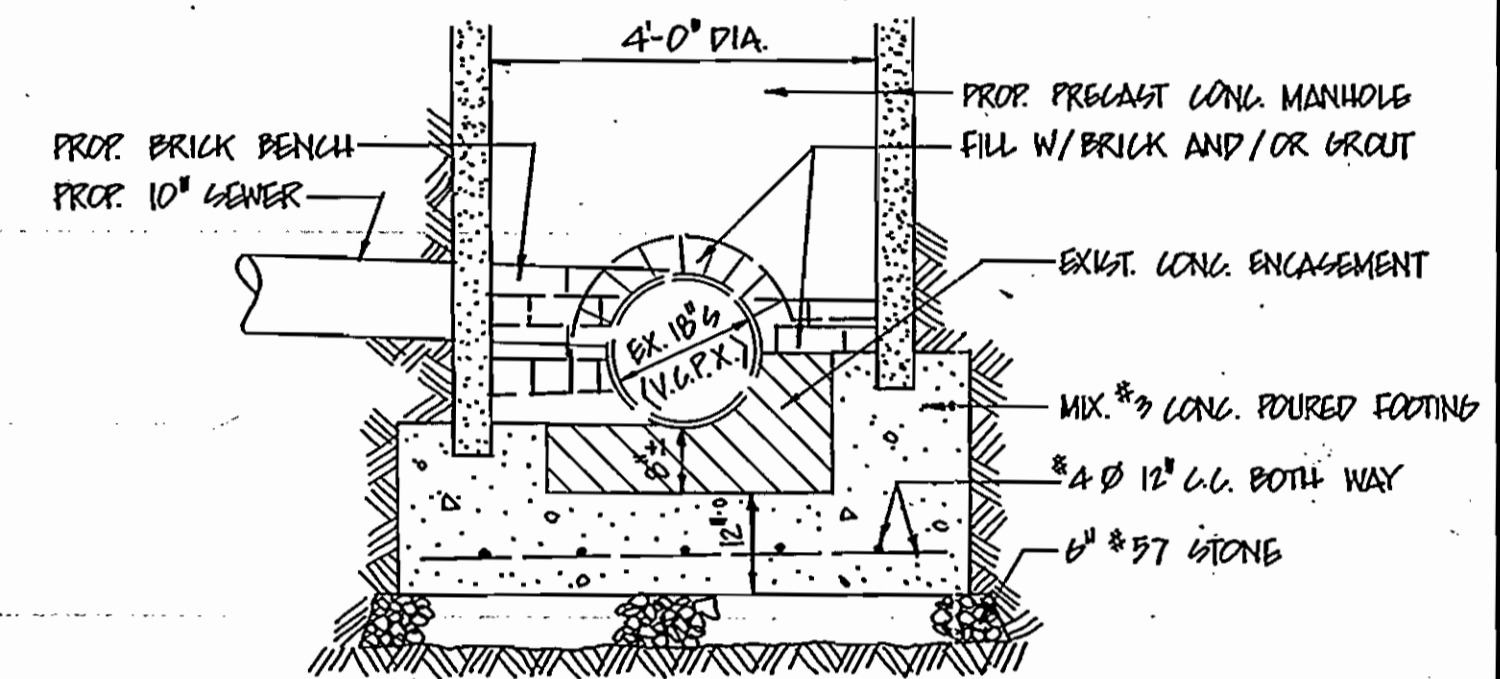
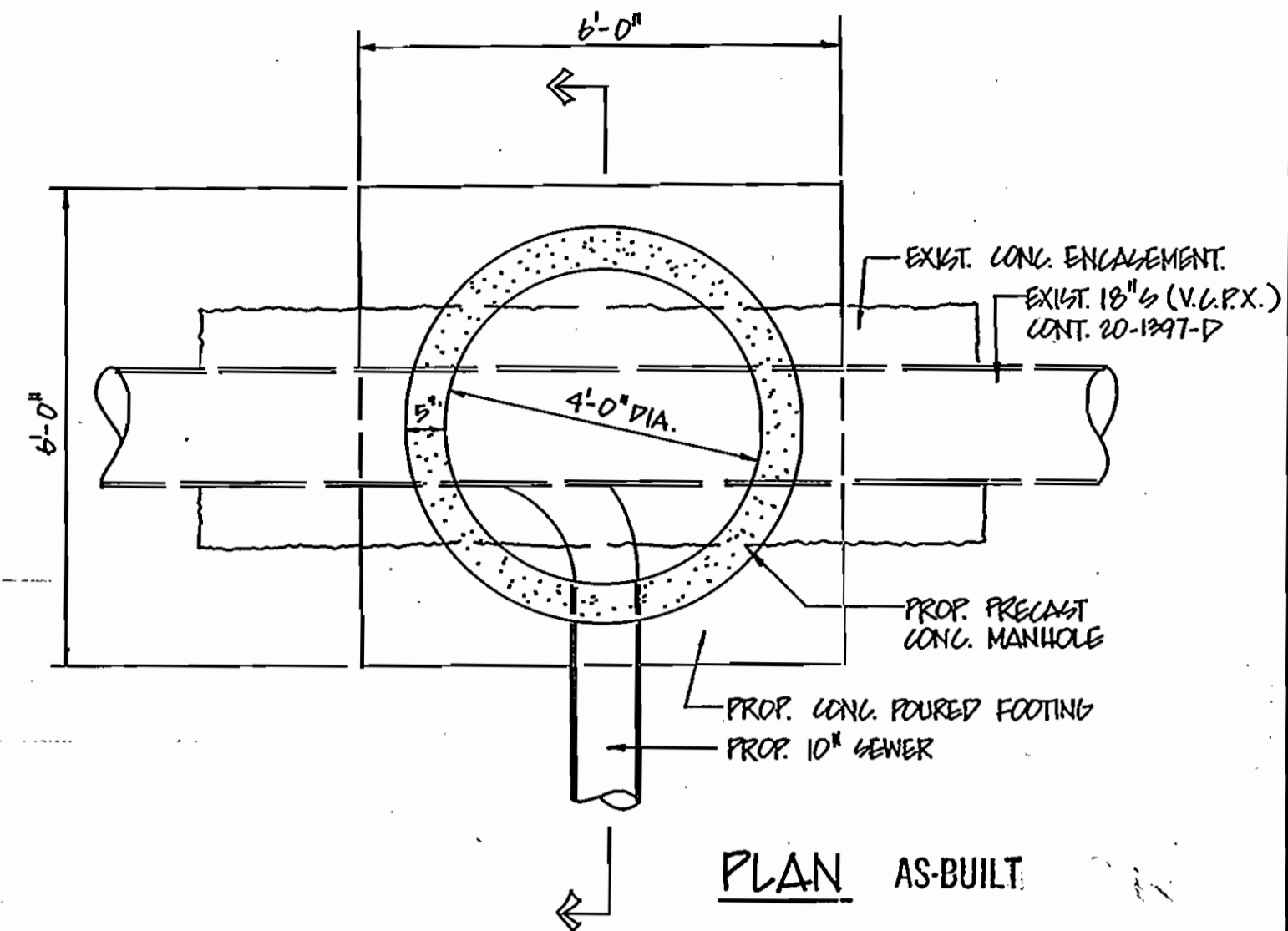
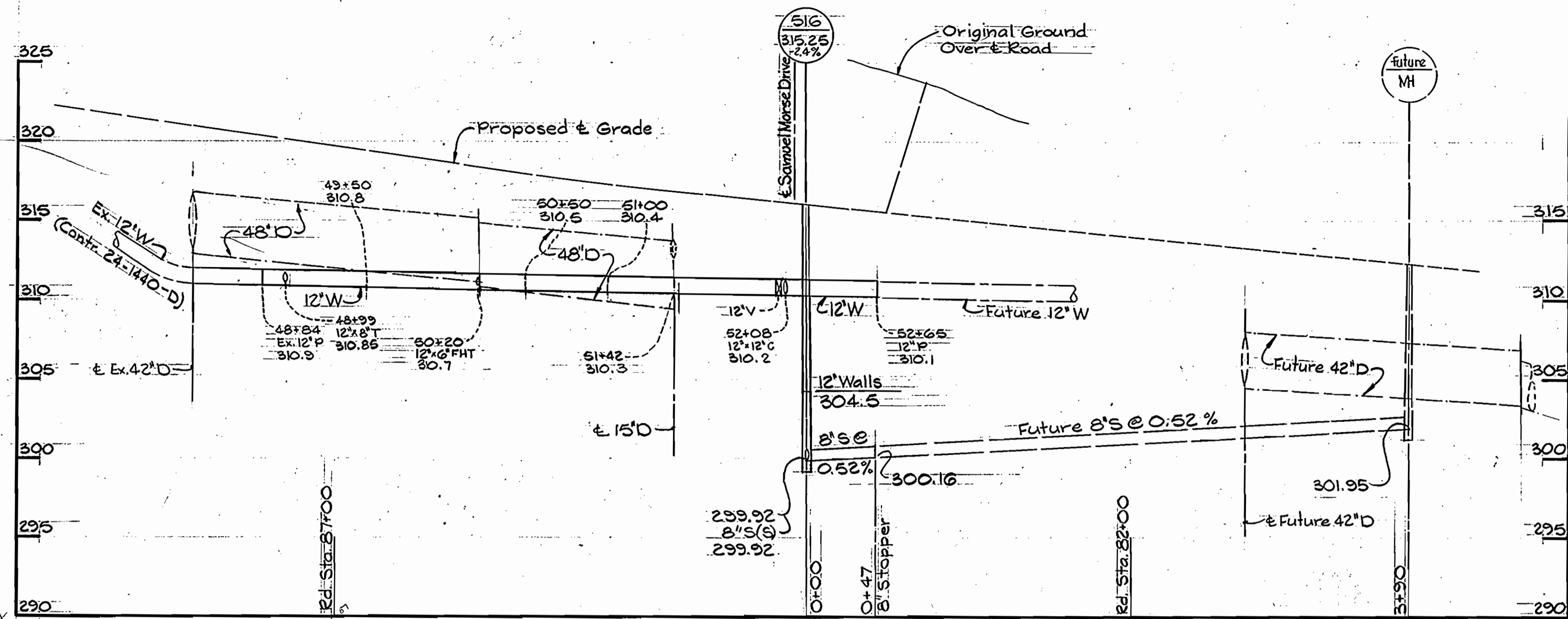
DES'T. S.U.	
DRN. O.M.D.	
CHK. R.B.N.	
DATE	
BY NO.	
REVISION	
DATE	

PLAN OF
 WATER & SEWER MAINS

COLUMBIA GATEWAY
 PARCELS P THROUGH R AND LOTS 9 AND 10
 A RESUBDIVISION OF PARCELO.
 ELECTION DISTRICT NO. 6
 CONTRACT NO. 24-1587-D

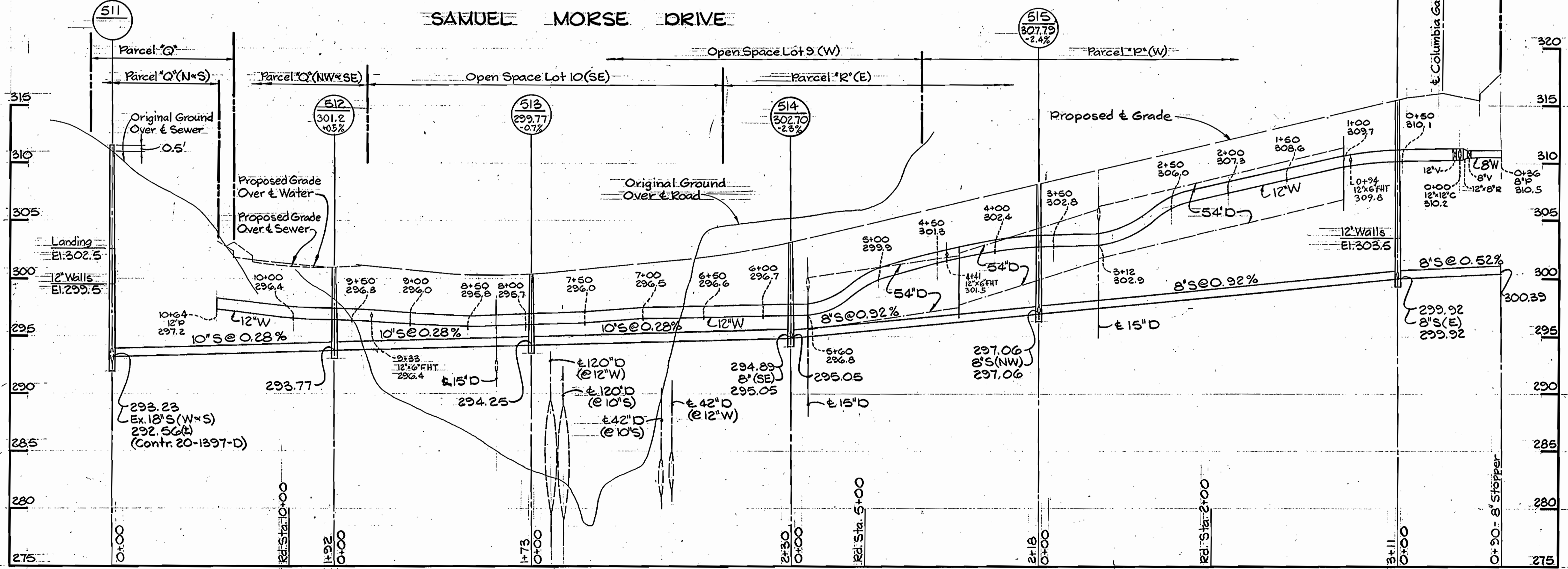
SCALE
 AS SHOWN
 SHEET
 2 OF 3

COLUMBIA GATEWAY DRIVE



SECTION
DETAIL SM 511
SCALE: 1" = 2"
AS-BUILT

SAMUEL MORSE DRIVE



PROFILE Scale: Horizontal 1" = 60'
Vertical 1" = 6'

DEPARTMENT OF PUBLIC WORKS HOWARD COUNTY, MARYLAND. Director: <i>John F. Nunn</i> 2-9-87 Chief - Bureau of Utilities - DATE	Whitman, Requardt AND ASSOCIATES ENGINEERS 2315 ST. PAUL ST. BALTIMORE, MARYLAND		DES: S.J.	PROFILE OF WATER & SEWER MAINS	COLUMBIA GATEWAY PARCELS P THROUGH, R AND LOTS 9 AND 10 A RESUBDIVISION OF PARCEL O. ELECTION DISTRICT NO. 6 CONTRACT NO. 24-1587-D	SCALE AS SHOWN SHEET 3 OF 3
			DRN: D.M.D. CHK: R.B.N. DATE:			