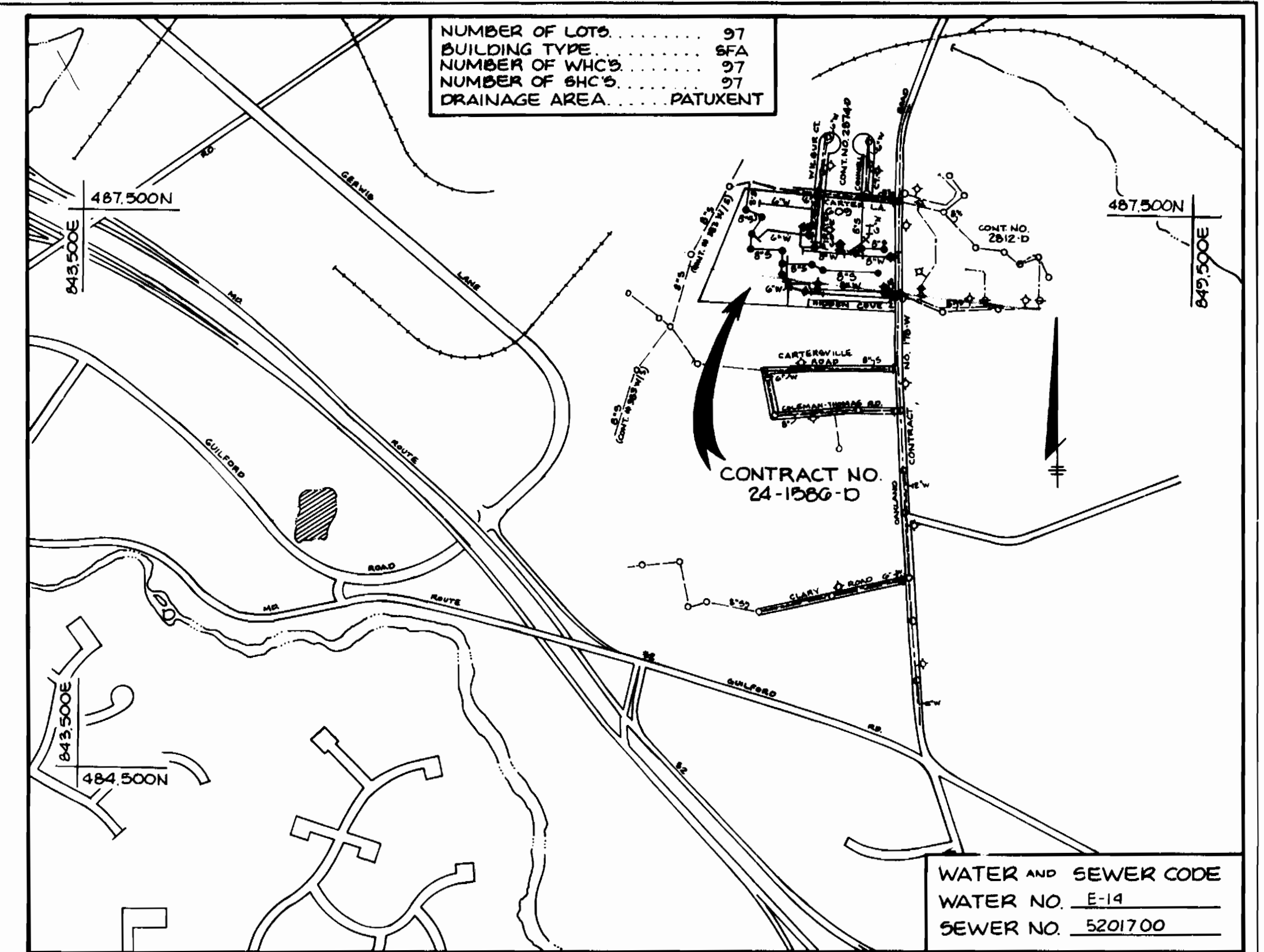


NOTE: MANHOLE RIM ELEVATIONS IN UNPAVED AREAS ARE TO BE ADJUSTED TO FINISHED GRADE WHEN SITE DEVELOPMENT PLAN IS GRADED.

F 57-75 SDP NO. 21/87  
 HOWARD SOIL CONSERVATION DISTRICT:  
 REVIEWED FOR HOWARD SOIL CONSERVATION DISTRICT  
 AND MEETS TECHNICAL REQUIREMENTS.

THIS PLAN IS APPROVED FOR SOIL EROSION AND SEDIMENT CONTROL BY THE HOWARD SOIL CONSERVATION DISTRICT.

SEDIMENT CONTROL MEASURES FOR THIS CONTRACT WILL BE IMPLEMENTED IN ACCORDANCE WITH SECTION 219 OF THE HOWARD COUNTY STANDARD SPECIFICATIONS AND AS PER ROAD CONSTRUCTION PLANS F-57-75

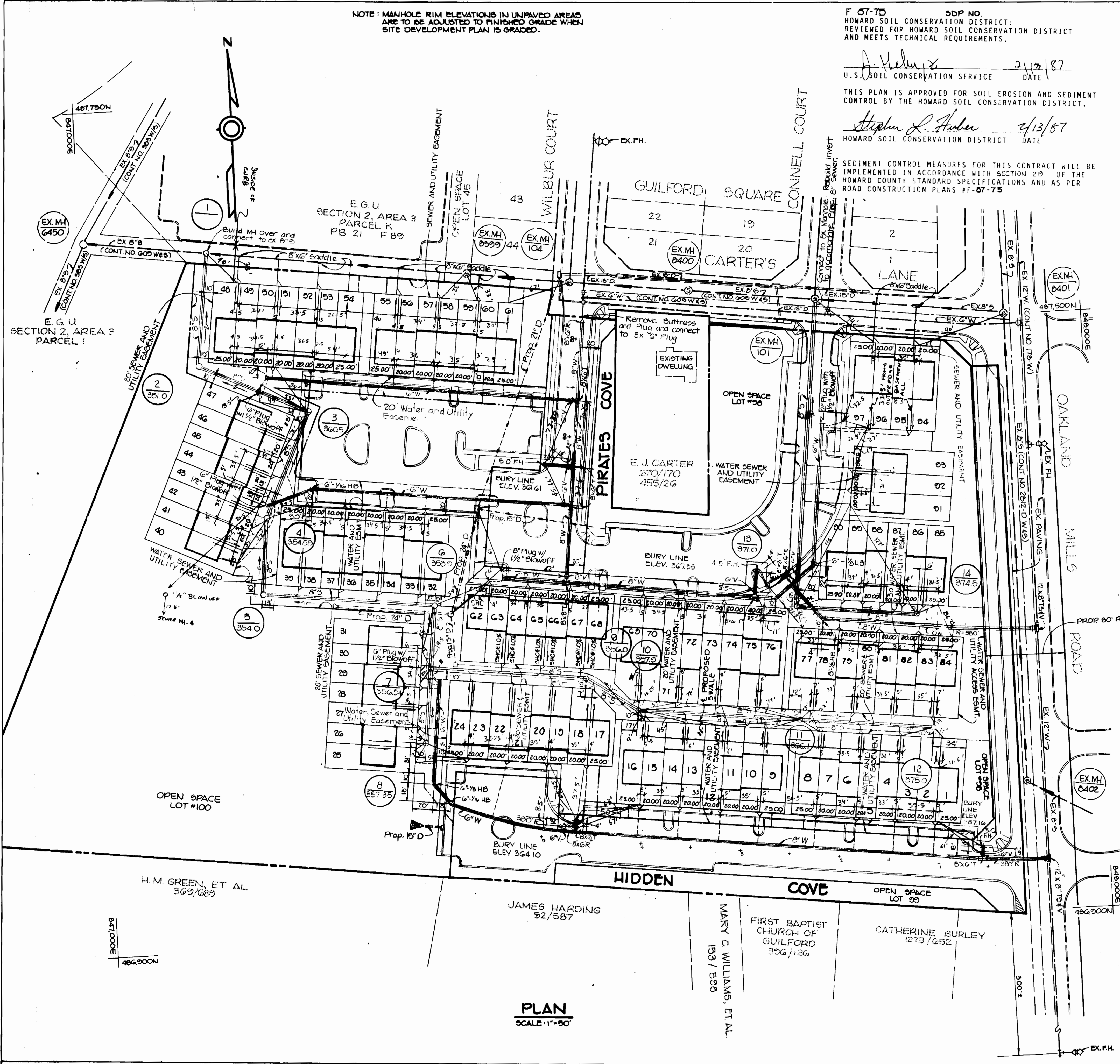


VICINITY MAP  
 SCALE: 1" = 300'

GENERAL NOTES

- APPROXIMATE LOCATION OF EXISTING MAINS ARE SHOWN. THE CONTRACTOR SHALL TAKE ALL NECESSARY PRECAUTIONS TO PROTECT EXISTING MAINS AND SERVICES AND MAINTAIN UNINTERRUPTED SUPPLY. ANY DAMAGE INCURRED SHALL BE REPAIRED IMMEDIATELY TO THE SATISFACTION OF THE ENGINEER AT THE CONTRACTOR'S EXPENSE.
- ALL HORIZONTAL CONTROLS ARE BASED ON MARYLAND STATE COORDINATES.
- ALL VERTICAL CONTROLS ARE BASED ON U.S.G.C. DATA.
- ALL PIPE ELEVATIONS SHOWN ARE INVERT (I) ELEVATIONS.
- CLEAR ALL UTILITIES BY A MINIMUM OF 6". CLEAR ALL POLES BY 2'-0" MINIMUM OR TUNNEL AS REQUIRED. THE OWNER HAS CONTACTED THE UTILITY COMPANIES AND HAS MADE ARRANGEMENTS FOR BRACING OF POLES AS SHOWN ON THE DRAWINGS. IN THE EVENT THE CONTRACTOR'S WORK REQUIRES THE BRACING OF ADDITIONAL POLES, ANY COST INCURRED BY THE OWNER FOR THE BRACING OF ADDITIONAL POLES OR DAMAGES SHALL BE DEDUCTED FROM MONEY OWED THE CONTRACTOR. THE CONTRACTOR SHALL COORDINATE WITH THE UTILITY COMPANIES TO SCHEDULE THE BRACING OF THE POLES.
- FOR DETAILS NOT SHOWN ON THE DRAWINGS, AND FOR MATERIALS AND CONSTRUCTION METHODS, USE HOWARD COUNTY DESIGN MANUAL, VOLUME IV, STANDARD SPECIFICATIONS AND DETAILS FOR CONSTRUCTION. THE CONTRACTOR SHALL HAVE A COPY OF VOLUME IV ON THE JOB.
- WHERE TEST PITS HAVE BEEN MADE ON EXISTING UTILITIES, THEY ARE NOTED BY THE SYMBOL (S) AT THE LOCATION OF THE TEST PIT. A NOTE OR NOTES CONTAINING THE RESULTS OF THE TEST PIT OR PITS IS INCLUDED ON THE DRAWINGS. EXISTING UTILITIES IN THE VICINITY OF THE PROPOSED WORK FOR WHICH TEST PITS HAVE NOT BEEN DUG SHALL BE LOCATED BY THE CONTRACTOR TWO WEEKS IN ADVANCE OF CONSTRUCTION OPERATIONS AT HIS OWN EXPENSE.
- CONTRACTOR SHALL NOTIFY THE FOLLOWING UTILITIES OR AGENCIES AT LEAST FIVE WORKING DAYS BEFORE STARTING WORK SHOWN ON THESE PLANS:
  - C&P TELEPHONE CO. - 1-800-257-7777
  - STATE HIGHWAY ADMINISTRATION - 531-5533
  - BALTIMORE GAS & ELECTRIC CO. CONTRACTOR SERVICES - 850-4620
  - BALTIMORE GAS & ELECTRIC CO. UNDER GROUND DAMAGE CONTROL - 859-9004
  - BALTIMORE GAS & ELECTRIC CO. TROUBLE SHOOTING - 298-9001
  - MISS UTILITY - 1-559-0100
  - COLONIAL PIPELINE CO. - 795-1390
  - BUREAU OF UTILITIES, HOWARD COUNTY DEPARTMENT OF PUBLIC WORKS - 992-2366
- TREES ARE TO BE PROTECTED FROM DAMAGE TO MAXIMUM EXTENT. TREES LOCATED WITHIN THE CONSTRUCTION STRIP ARE NOT TO BE REMOVED OR DAMAGED BY THE CONTRACTOR.
- CONTRACTOR SHALL REMOVE TREES, STUMPS AND ROOTS ALONG LINE OF EXCAVATION AS DIRECTED BY THE ENGINEER. PAYMENT FOR SUCH REMOVAL SHALL BE INCLUDED IN THE UNIT PRICE BID FOR EXCAVATION AND BACKFILL.
- PLACE REGULATION "MEN WORKING" AND WARNING SIGNS AS REQUIRED TO COMPLY WITH MARYLAND STATE HIGHWAY ADMINISTRATION MANUAL OF TRAFFIC CONTROL FOR HIGHWAY CONSTRUCTION AND MAINTENANCE OPERATIONS.
- ALL WATER MAINS TO BE D.I.P. UNLESS OTHERWISE NOTED.
- TOP OF ALL WATER MAINS TO HAVE A MINIMUM OF 3' COVER UNLESS OTHERWISE NOTED.
- VALVES ADJACENT TO TEES SHALL BE STRAPPED TO TEES.
- BLOCK ALL FITTINGS WITH CONCRETE.
- BURY LINE ELEVATIONS ON FIRE HYDRANTS SHALL BE SET TO THE ELEVATIONS SHOWN ON THE DRAWINGS. ALL FIRE HYDRANTS SHALL BE STRAPPED AND BUTTRESSED WITH CONCRETE IN ACCORDANCE WITH STANDARD DETAILS. SOIL AROUND THE FIRE HYDRANT TO BE COMPACTED IN ACCORDANCE WITH SECTIONS 1003 AND 1006 OF THE GENERAL REQUIREMENTS FOR WATER AND SEWER.
- ALL WATER HOUSE CONNECTIONS SHALL BE FOR AN INSIDE METER SETTING.
- THE CONTRACTOR SHALL NOT OPERATE ANY WATER MAIN VALVES ON THE EXISTING SYSTEM.
- FOR ALL COPPER WATER HOUSE CONNECTIONS UTILIZE FLARED TYPE FITTINGS ONLY.
- THE SERVICE CLAMPS ARE TO HAVE STAINLESS STEEL STRAPS.
- ALL SEWER MAINS SHALL BE C.S.P.X., V.C.P.X., P.V.C. OR A.C.P. CLASS 2400 UNLESS OTHERWISE NOTED.
- THE CONTRACTOR SHALL PROVIDE A JOINT IN ALL SEWER MAINS WITHIN 2'-0" OF EXTERIOR MANHOLE WALL.
- ALL MANHOLES SHALL BE 4'-0" INSIDE DIAMETER UNLESS OTHERWISE NOTED.
- MANHOLES SHOWN WITH 12" AND 18" WALLS ARE BRICK MANHOLES ONLY.
- MANHOLES DESIGNATED W.T. IN PLAN AND PROFILE SHALL HAVE WATERTIGHT FRAME AND COVERS, STANDARD DETAIL 65.52 VOLUME 1. WHERE WATERTIGHT MANHOLE FRAME AND COVER IS USED, SET TOP OF FRAME 1'-0" ABOVE FINISHED GRADE.
- HOUSE(S) WITH THE SYMBOL "C.N.S." INDICATES THE CELLAR CANNOT BE SERVED.
- ALL WATER HOUSE CONNECTIONS SHALL HAVE A MINIMUM VERTICAL CLEARANCE OF 12" ABOVE ALL SANITARY SLEWER CROSSINGS.
- ALL SANITARY SEWER HOUSE CONNECTIONS SHALL HAVE A MINIMUM VERTICAL CLEARANCE OF 12" BELOW ALL WATER MAIN CROSSINGS.
- PROFILE STATIONS SHALL BE ADJUSTED AS NECESSARY TO CONFORM TO PLAN DIMENSIONS.
- NO PIPE SHALL BE LAID UNTIL LINES OF EXCAVATION HAVE BEEN BROUGHT TO SUBGRADE.

ITEM	QUANTITIES		SUPPLIER
	PROPOSED	AS-BUILT	
8" Water	1810	1228 LF	DIP CO. 52/ATLANTIC
6" Water	1195	1063 LF	DIP CO. 52/ATLANTIC
4" Water	1000	1738 LF	DIP CO. 52/CHARLOTTE, P.V.C.
6" Valves (EXCL. F.H.V.)	4	4 EA	MUELLE & CO.
8" Valves	1	1 EA	"
1/2" W.C.	822	394 LF	A-33/MUELLE
1" W.C.	1192	388 LF	TYLER & HALESTAD
1 1/2" W.C.	1192	388 LF	"
VP Manholes	87	14 EA	SER. 33/CHARLOTTE, P.V.C.
12" x 18" W.C.	2	2 EA	ATLANTIC PRECAST
6" x 6" Saddles	10	1 EA	MUELLE & CO./TYLER & HALESTAD
			P.V.C./ELC. CONTROL, INC.



PLAN  
 SCALE: 1" = 50'

DEPARTMENT OF PUBLIC WORKS  
 HOWARD COUNTY, MARYLAND

TRACY, SCHULTE  
 & ASSOCIATES INC.  
 planning architecture engineering  
 8450 Baltimore National Pike Suite 34  
 Ellicott City, Maryland 21043



DES: R J W					
DRN: C D T					
CHK: J K T					
DATE: 7-1-86	BY	NO.	REVISION	DATE	

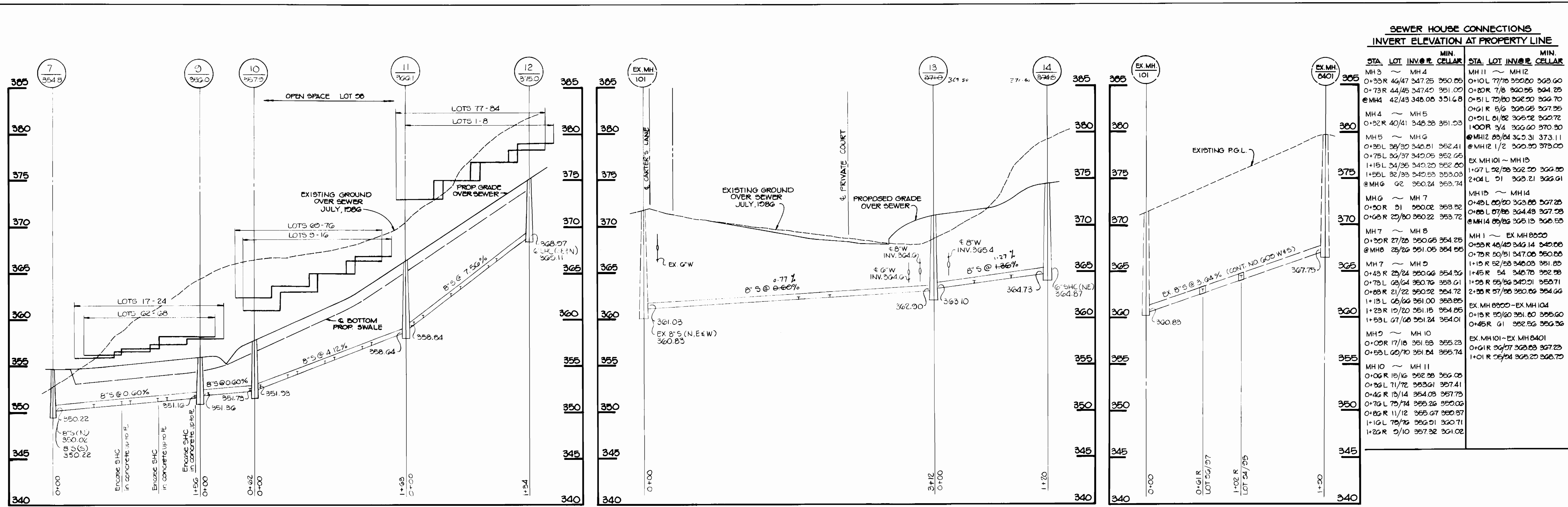
PLAN OF  
 WATER AND SEWER MAINS

CARTERS COVE  
 SECTION I, AREA I  
 6th ELECTION DISTRICT NO.  
 CONTRACT NO. 24-1586-D

SCALE AS SHOWN  
 SHEET 1 OF 3

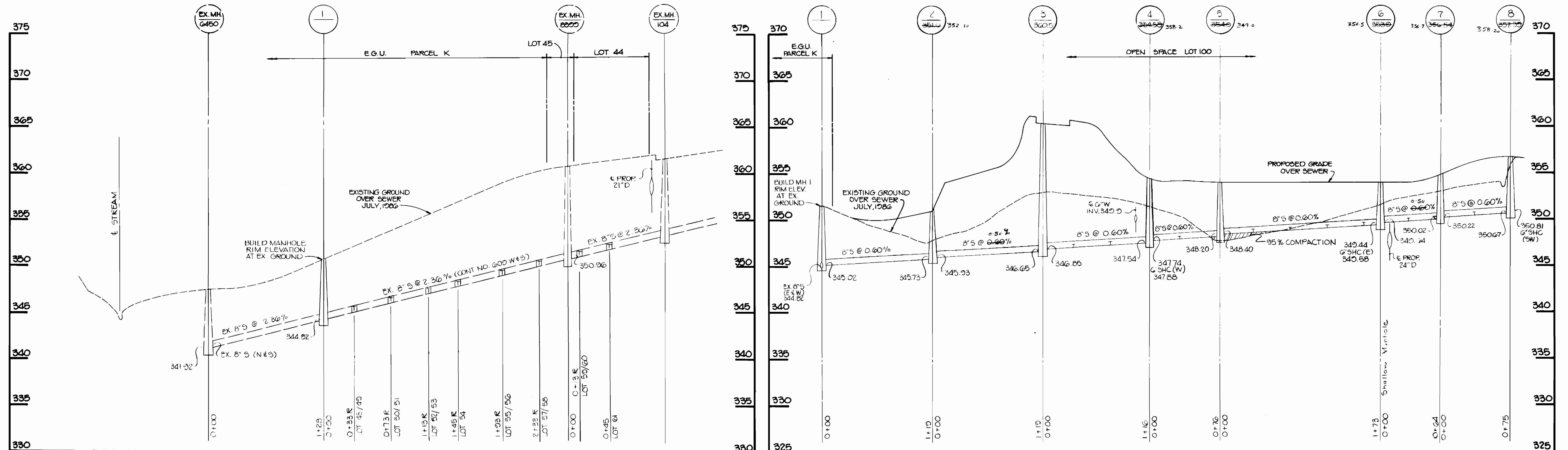
AS-BUILT





**SEWER HOUSE CONNECTIONS  
INVERT ELEVATION AT PROPERTY LINE**

STA.	LOT	INVERT	MIN. CELLAR	STA.	LOT	INVERT	MIN. CELLAR
MH 3	~	MH 4		MH 11	~	MH 12	
0+33 R	46/47	347.25	350.85	0+10 L	77/78	350.00	363.60
0+73 R	44/45	347.40	351.00	0+20 R	7/8	360.55	364.25
@MH 4	42/43	348.05	351.68	0+51 L	70/80	362.20	366.70
MH 4	~	MH 5		0+61 R	5/6	360.05	367.25
0+32 R	40/41	348.38	351.53	0+91 L	61/62	365.22	369.72
MH 5	~	MH 6		1+00 R	3/4	366.60	370.30
0+35 L	36/37	348.51	352.41	@MH 12	83/84	363.31	373.11
0+75 L	32/37	349.05	352.65	@MH 12	1/2	360.20	373.00
1+15 L	34/35	349.20	352.80				
1+55 L	32/33	349.53	353.03				
@MH 6	82	350.24	353.74				
MH 6	~	MH 7					
0+30 R	31	350.02	353.52				
0+63 R	29/30	350.22	353.72				
MH 7	~	MH 8					
0+30 R	27/28	350.65	354.25				
@MH 8	25/26	351.05	354.55				
MH 7	~	MH 9					
0+43 R	23/24	350.66	354.36				
0+73 L	22/24	350.76	354.61				
0+83 R	21/22	350.92	354.72				
1+13 L	16/26	351.00	354.85				
1+53 L	12/20	351.15	354.85				
1+53 L	07/08	351.24	354.91				
MH 9	~	MH 10					
0+00 R	17/18	351.53	355.23				
0+53 L	09/10	351.84	355.74				
MH 10	~	MH 11					
0+06 R	15/16	352.28	356.08				
0+36 L	71/72	353.61	357.41				
0+45 R	13/14	354.03	357.73				
0+76 L	73/74	355.26	359.03				
0+83 R	11/12	355.67	359.37				
1+16 L	75/76	356.01	360.71				
1+22 R	5/10	357.32	361.02				



PROFILES: SCALE HORIZ. 1"=50' VERT. 1"=5'

DEPARTMENT OF PUBLIC WORKS  
HOWARD COUNTY, MARYLAND

*Joseph F. Newman* 2-27-87  
DIRECTOR OF PUBLIC WORKS DATE

*Robert J. Deimler* 2-19-87  
CHIEF, BUREAU OF UTILITIES DATE

*James B. Rainey* 2-20-87  
CHIEF, BUREAU OF ENGINEERING DATE

*William L. F.* 2-19-87  
CHIEF, LAND DEVELOPMENT DIVISION DATE

TRACY, SCHULTE & ASSOCIATES INC.  
planning architecture engineering  
8450 Baltimore National Pike Suite 34  
Ellicott City, Maryland 21043



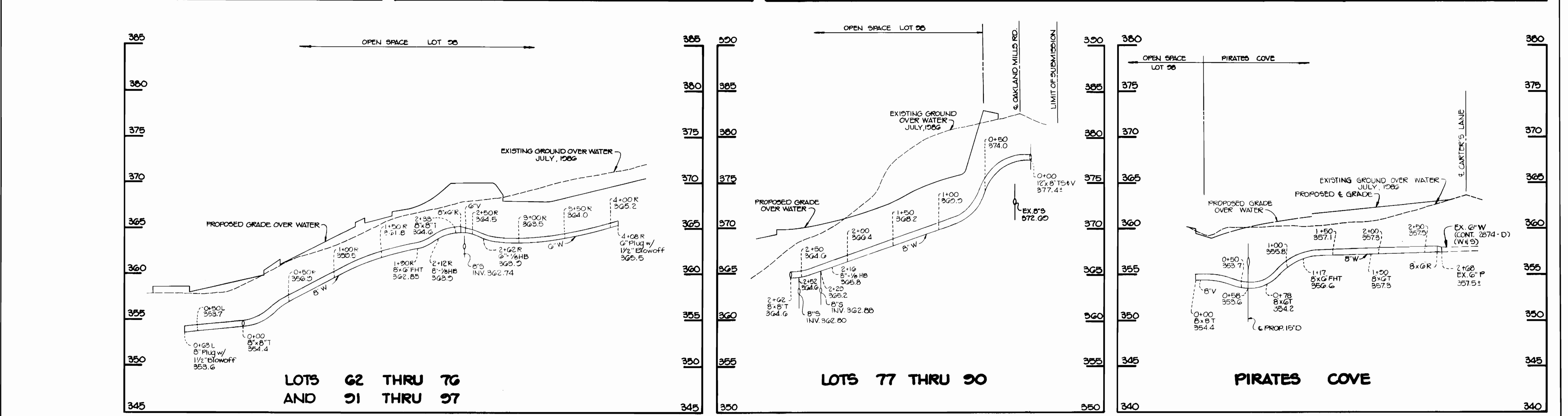
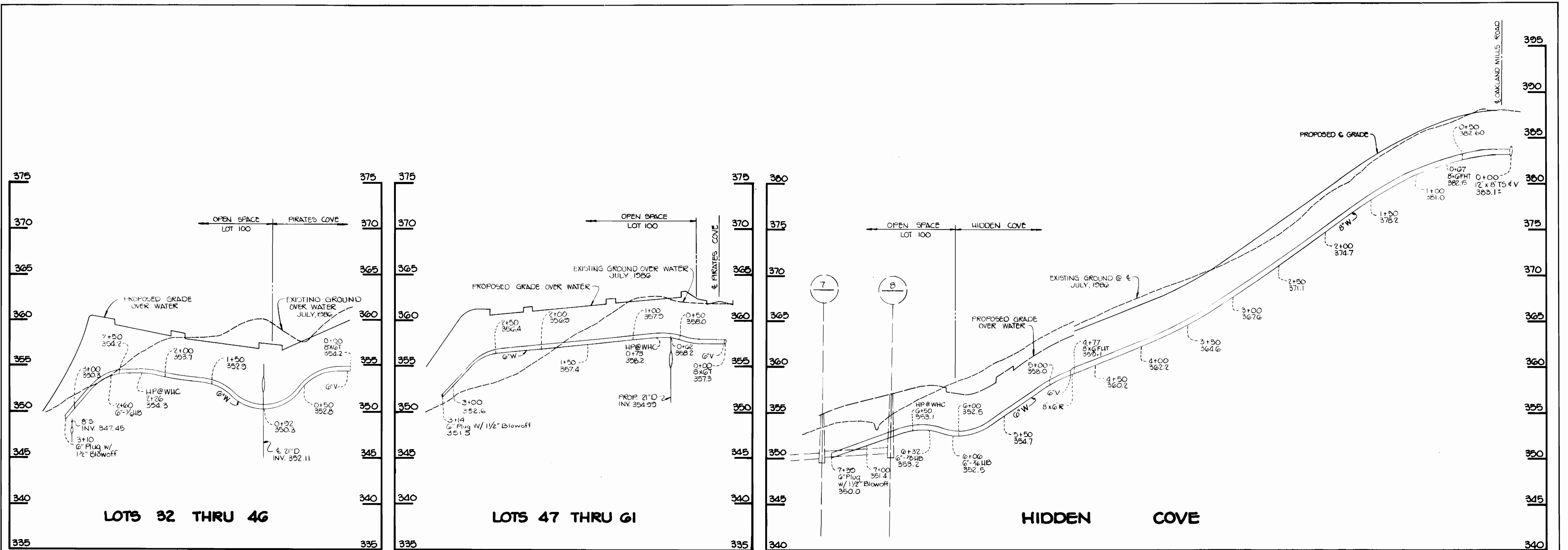
DES: RJW			
DRN: CDT			
CHK: JKT			
DATE: 7-1-86			
SAB	A	REVISED SEWER MAIN PROFILE LOT 17-24, 51-53	4-2-87
BY	NO.	REVISION	DATE

PROFILES OF  
WATER AND SEWER MAINS

600' SCALE MAP NO. 42 BLOCK NO. 10 & 11

CARTERS COVE  
SECTION I AREA I  
6th ELECTION DISTRICT  
CONTRACT NO. 24-1586-D

SCALE AS SHOWN  
SHEET 2 OF 3



PROFILES: SCALE: HORIZ. 1"=50' VERT. 1"=5'

DEPARTMENT OF PUBLIC WORKS  
HOWARD COUNTY, MARYLAND  
2-27-87  
2-19-87  
CHIEF, BUREAU OF UTILITIES  
CHIEF, LAND DEVELOPMENT DIVISION

TRACY, SCHULTE & ASSOCIATES INC.  
planning architecture engineering  
8450 Baltimore National Pike Suite 34  
Ellicott City, Maryland 21043



DES: RJW			
DRN: CDT			
CHK: JKT			
DATE: 7-1-86			

PROFILES OF WATER AND SEWER MAINS  
Revised Water Main Profile - Lots 47 thru 61  
DATE: 7-1-86

CARTER'S COVE SECTION I AREA I  
6<sup>th</sup> ELECTION DISTRICT  
CONTRACT NO. 24-1586-D  
SCALE AS SHOWN  
SHEET 3 OF 3

AS-BUILT