

TYPE OF BUILDINGS: OFFICE, WAREHOUSE  
 NUMBER OF LOTS: 1  
 NUMBER OF WATER H.C.'s: 4  
 DRAINAGE AREA: LITTLE PATUKENT

LOCATION MAP 1"=600'

**BENCH MARKS**  
 W.R. & A.B.M.#2: ELEVATION: 308.28  
 R.R. SPIKE IN BASE OF 14" POPLAR, 90'(S)  
 RIGHT OF & ALEXANDER BELL DRIVE  
 PT. STA. 11+23.93  
 W.R. & A.B.M.#3: ELEVATION: 329.20  
 TOP BOLT @ TOP OLD LIGHT POST FOOTER, W/S  
 OF & COLUMBIA GATEWAY DRIVE  
 STA. 11+50

**GENERAL NOTES:**

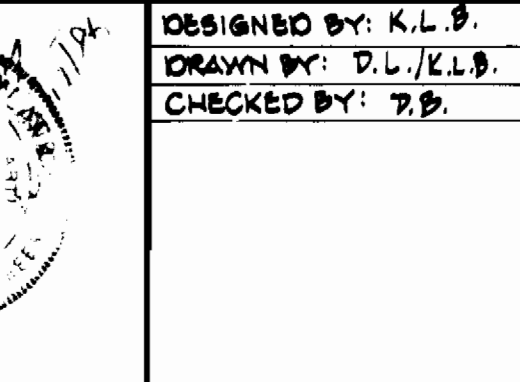
- APPROXIMATE LOCATIONS OF EXISTING MAINS ARE SHOWN. THE CONTRACTOR SHALL TAKE ALL NECESSARY PRECAUTIONS TO PROTECT EXISTING MAINS AND SERVICES AND MAINTAIN UNINTERRUPTED SUPPLY. ANY DAMAGE INCURRED SHALL BE REPAIRED IMMEDIATELY TO THE SATISFACTION OF THE ENGINEER AT THE CONTRACTOR'S EXPENSE.
- ALL HORIZONTAL CONTOURS ARE BASED ON MARYLAND STATE COORDINATES.
- ALL PIPE ELEVATIONS SHOWN ARE INVERT ELEVATIONS.
- CLEAR ALL UTILITIES BY A MINIMUM 6'. CLEAR ALL POLES BY 2'-0" MINIMUM OR TUNNEL AS REQUIRED. ANY COST INCURRED TO THE CONTRACTOR FOR TUNNELING OR BRACING AT POLES, SHALL BE INCLUDED IN THE UNIT PRICE BID FOR CONSTRUCTION OF THIS MAIN.
- FOR DETAILS NOT SHOWN ON THESE DRAWINGS, AND FOR MATERIALS AND CONSTRUCTION METHODS USE HOWARD COUNTY DESIGN MANUAL, VOLUME III, STANDARD SPECIFICATIONS AND DETAILS FOR CONSTRUCTION. THE CONTRACTOR SHALL HAVE A COPY OF VOLUME III ON THE JOB.
- CONTRACTOR SHALL LOCATE EXISTING UTILITIES A MINIMUM OF TWO WEEKS IN ADVANCE OF CONSTRUCTION OPERATIONS IN THE VICINITY OF PROPOSED UTILITIES AT HIS OWN EXPENSE.
- CONTRACTOR SHALL NOTIFY THE FOLLOWING UTILITIES OR AGENCIES AT LEAST FIVE WORKING DAYS BEFORE STARTING WORK ON THESE PLANS; STATE HIGHWAY ADMINISTRATION 931-9933; BALTIMORE GAS & ELECTRIC CO. - CONT. SERVICES 850-4620, BALTIMORE GAS & ELECTRIC - TROUBLE SHOOTING 292-9001; BALTIMORE GAS & ELECTRIC - UNDERGROUND DAMAGE CONTROL 854-9004; MISS UTILITY 1-359-0100; COLONIAL PIPELINE CO. 755-1390; BUREAU OF UTILITIES, HOWARD CO. DEPT. OF PUBLIC WORKS 992-2366.
- TREES AND SHRUBS ARE TO BE PROTECTED FROM DAMAGE TO MAXIMUM EXTENT. TREES AND SHRUBS LOCATED WITHIN THE CONSTRUCTION STRIP ARE NOT TO BE REMOVED OR DAMAGED BY THE CONTRACTOR.
- CONTRACTOR SHALL REMOVE TREES, STUMPS AND ROOTS ALONG LINE OF EXCAVATION. PAYMENT FOR SUCH REMOVAL SHALL BE INCLUDED IN THE UNIT PRICE BID FOR CONSTRUCTION OF THE MAIN.
- ALL WATER MAINS TO BE D.I.P. UNLESS OTHERWISE NOTED.
- TOP OF ALL WATER MAINS TO HAVE A MINIMUM OF 3% COVER UNLESS OTHERWISE NOTED.
- VALVES ADJACENT TO TEES SHALL BE STRAPPED TO TEES.
- ALL FITTINGS SHALL BE BUTTRESSED OR ANCHORED WITH CONCRETE IN ACCORDANCE WITH STANDARD DETAILS OTHERWISE PROVIDED ON THE DRAWINGS.
- FIRE HYDRANTS SHALL BE SET TO THE BURY LINE ELEVATIONS SHOWN ON THESE DRAWINGS. ALL FIRE HYDRANTS TO BE SET 3' (THREE FEET) BEHIND PROPOSED FACE OF CURB UNLESS OTHERWISE NOTED. ALL FIRE HYDRANTS TO BE STRAPPED AND BUTTRESSED WITH CONCRETE IN ACCORDANCE WITH SECTION 1003 OF THE STANDARD SPECIFICATIONS.
- THE CONTRACTOR SHALL NOT OPERATE ANY WATER MAIN VALVES ON THE EXISTING WATER SYSTEMS.
- ALL WATER HOUSE CONNECTIONS, INSIDE METER SETTINGS UNLESS OTHERWISE SHOWN.
- ALL WATER HOUSE CONNECTIONS SHALL COMPLY WITH HOWARD COUNTY STANDARD 3.21 AS SHOWN ON ARTICLE 40 SPEC. PROVISION.
- MINIMUM CRIMP RADIUS WILL BE SPECIFIED BY PIPE MANUFACTURER.
- PLACE REGULATION "MEN WORKING" AND "WARNING SIGNS AS REQUIRED TO COMPLY WITH MARYLAND STATE HIGHWAY ADMINISTRATIONS MANUAL FOR HIGHWAY CONSTRUCTION AND MAINTENANCE OPERATIONS.
- SERVICE CLAMPS ARE TO HAVE STAINLESS STEEL STRAPS.

PLAN SCALE: 1"=50'

REVIEWED FOR HOWARD SOIL CONSERVATION DISTRICT AND MS&TS TECHNICAL REQUIREMENTS. <i>James Mitchell</i> 10/23/86 U.S. SOIL CONSERVATION SERVICE DATE	THE DEVELOPMENT PLAN IS APPROVED FOR SOIL EROSION AND SEDIMENT CONTROL BY THE HOWARD SOIL CONSERVATION DISTRICT APPROVED: <i>Stephen K. Amb.</i> 10/23/86 HOWARD SOIL CONSERVATION DISTRICT DATE	SEDIMENT CONTROL MEASURES FOR THIS CONTRACT WILL BE IMPLEMENTED IN ACCORDANCE WITH SECTION 219 OF THE STD. SPEC. AND S.D.P.# 87 - 49.
---	--	---

DEPARTMENT OF PUBLIC WORKS  
 HOWARD COUNTY, MARYLAND  
*John N. Nalley* 10-28-86  
 DIRECTOR OF PUBLIC WORKS DATE  
*William H. H.* 10-29-86  
 CHIEF BUREAU OF ENGINEERING DATE

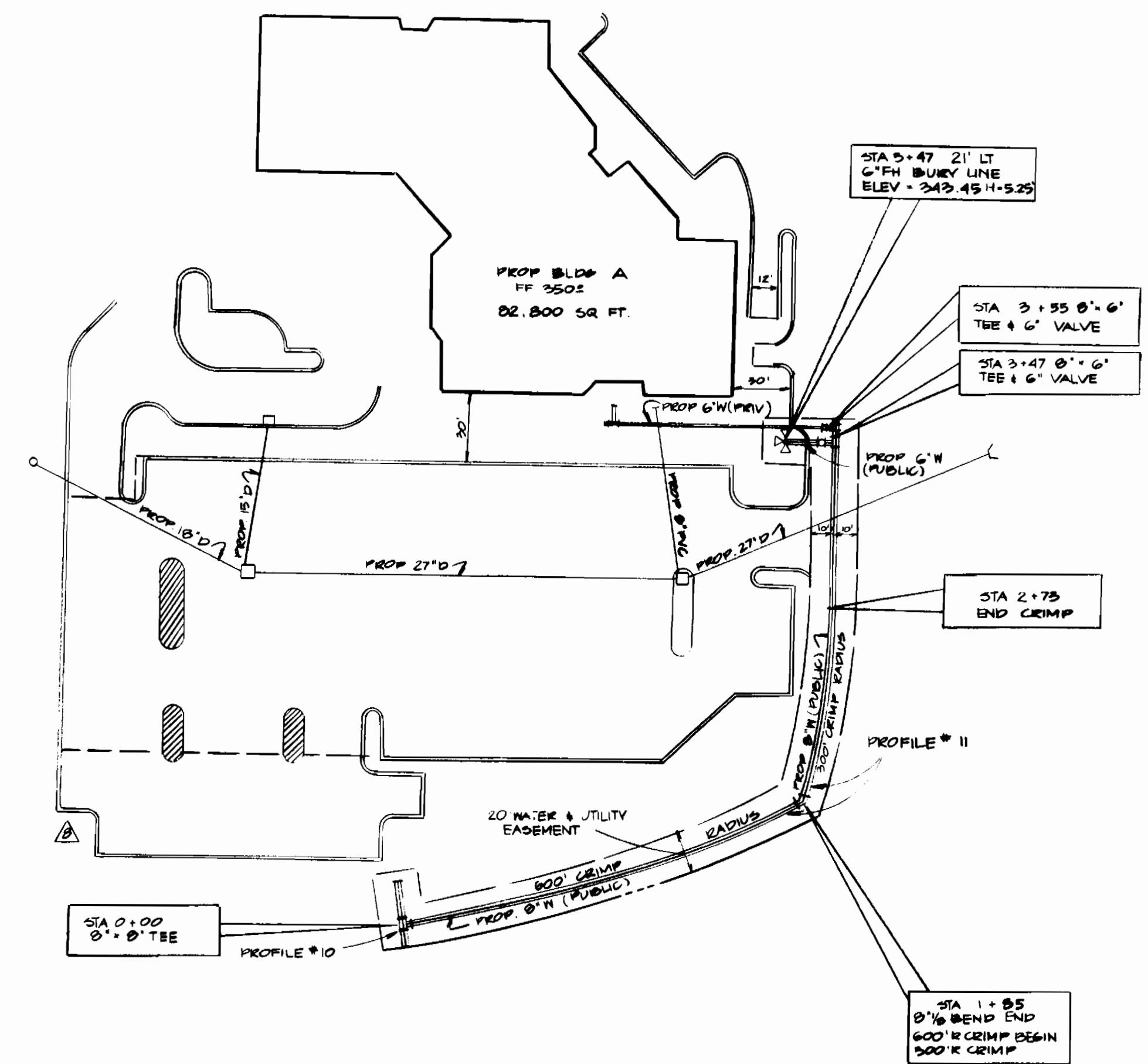
GEORGE W. STEPHENS JR. & ASSOCIATES, INC.  
 303 ALLEGHENY AVENUE  
 TOWSON, MARYLAND 21204  
 (301) 825-8120



DESIGNED BY:	BY:	NO.	REVISIONS	DATE
K.L.B.	K.L.B.	1	PROFILE #1 (STA. 9+50 TO STA. 10+74.00) ADDED 22.14 LF	4/28/87
	K.L.B.	2	PROFILE #6 (FROM STA. 10+41.66 TO STA. 10+24.00)	4/28/87
	K.L.B.	3	PROFILE #7 @ 4+39	4/28/87
	K.L.B.	4	WATER CONNECTION TO BLOC 'A' (PROFILES #10, #11, #12)	4/28/87
	K.L.B.	5	WATER CONNECTION TO BLOC 'C' (PROFILES #11 & #9)	4/28/87
	K.L.B.	6	WATER CONNECTION TO BLOC 'B' (PROFILE #2)	4/28/87
	K.L.B.	7	OMITTED PROFILES #6, 7, 8, 9; REMOVED BLOC 'D' & B' W FROM STA. 10+00 TO 10+74.70 - PROFILE #1	4/28/87

PLAN - FOR -  
 PROPOSED WATER MAIN  
 CONTRACT NO. 44-1579-D  
 600' SCALE MAP No. 42 & 43 BLOCK No. 1 & 6

COLUMBIA GATEWAY  
 PARCEL 'C'  
 HOWARD COUNTY, MD.  
 SEPT. 16, 1986  
 SHEET 1 OF 2



DEPARTMENT OF PUBLIC WORKS  
HOWARD COUNTY, MARYLAND

DIRECTOR OF PUBLIC WORKS      DATE      CHIEF, BUREAU OF ENGINEERING      DATE

DES:					
DRN:					
CHK:					
DATE:	BY	NO.	REVISION	DATE	600' SCALE MAP NO.      BLOCK NO.

COLUMBIA GATEWAY  
PARCEL C

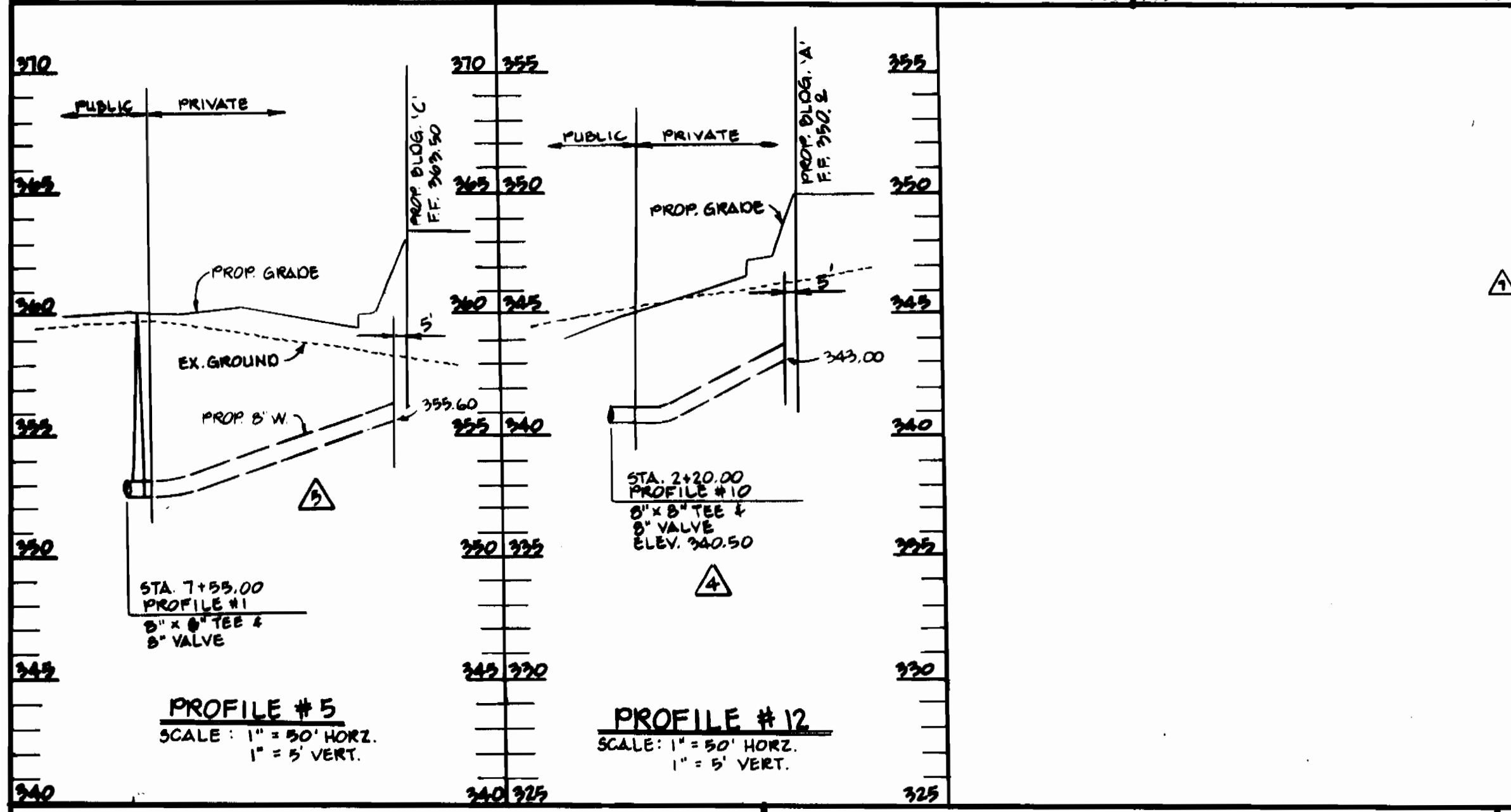
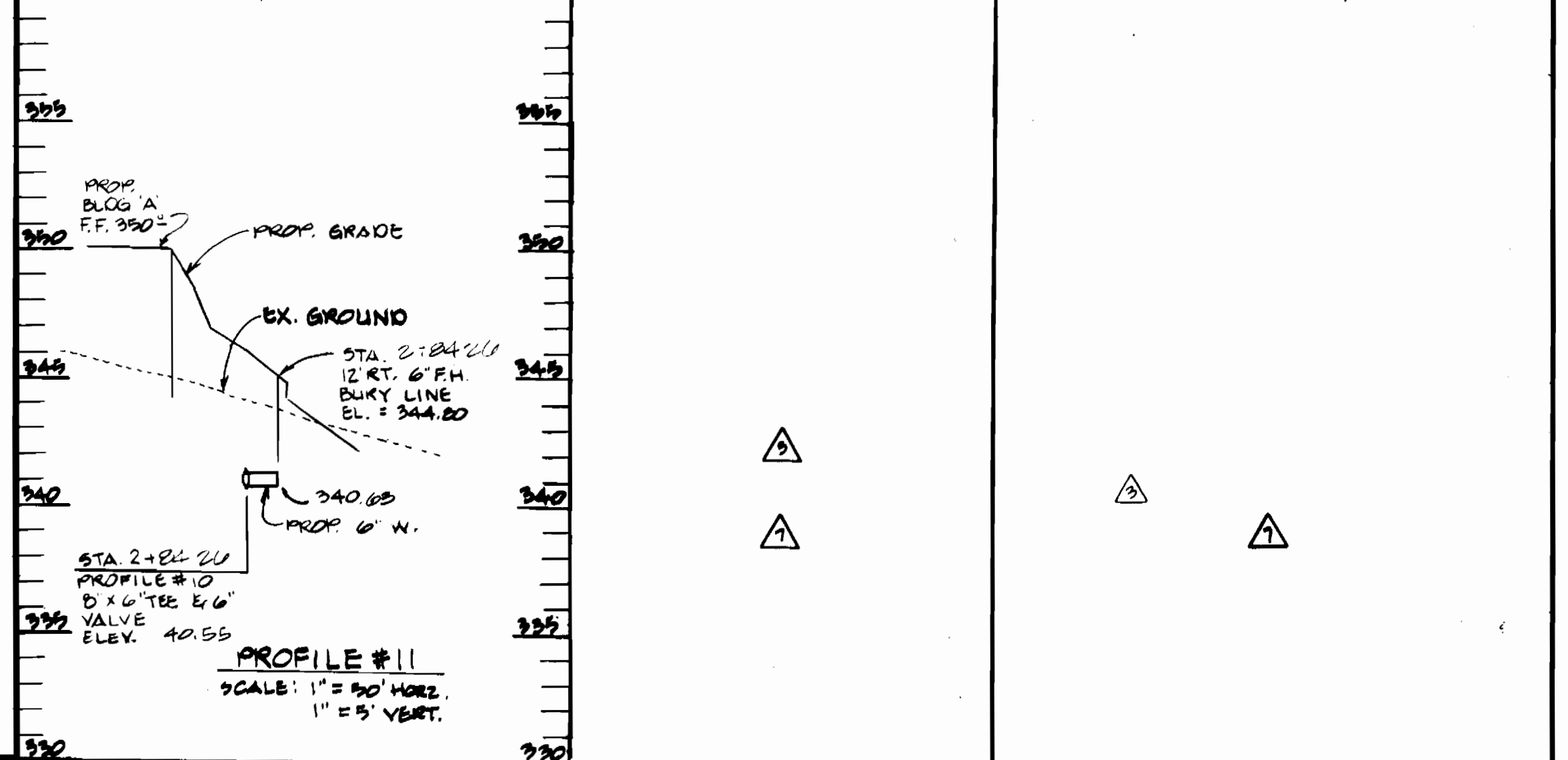
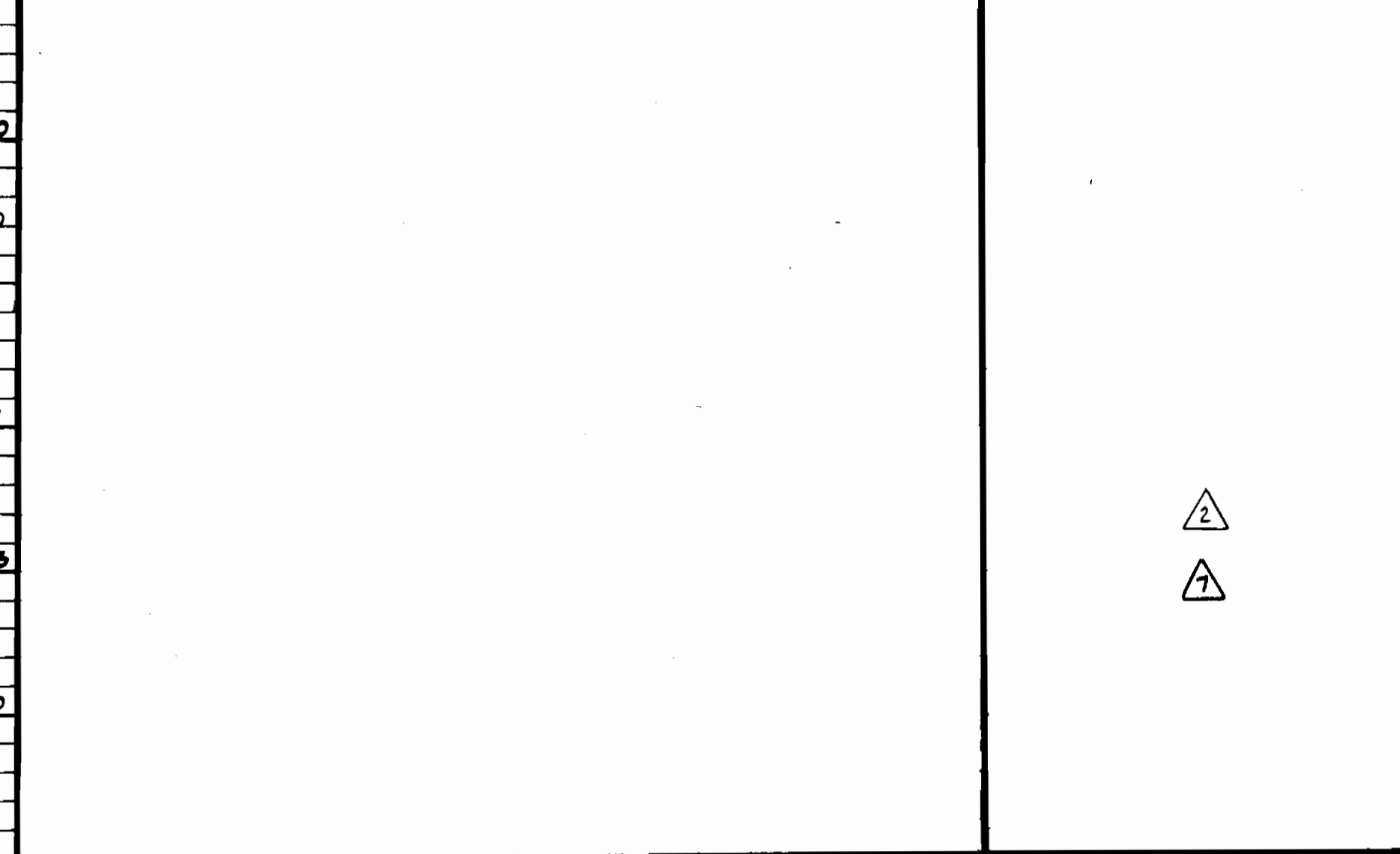
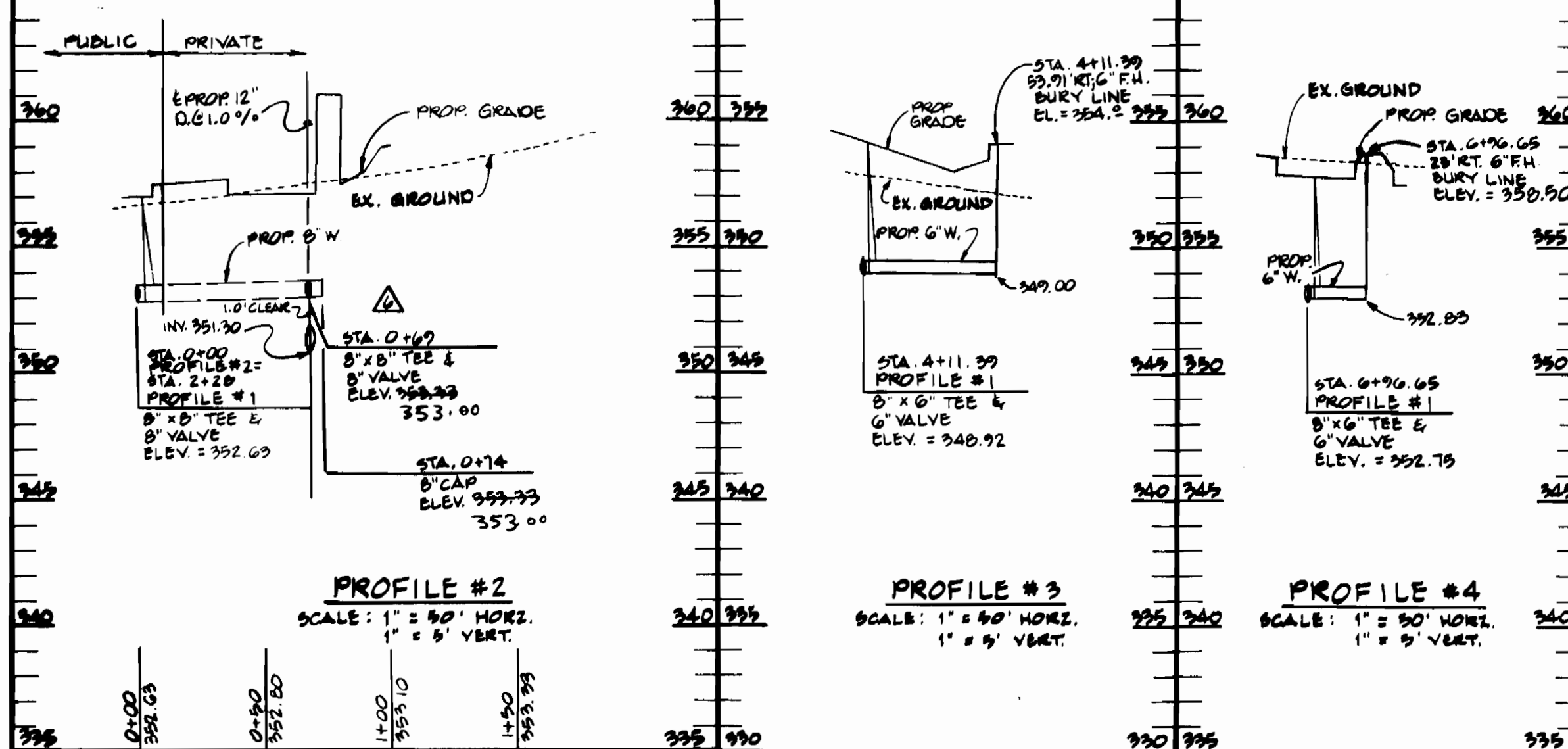
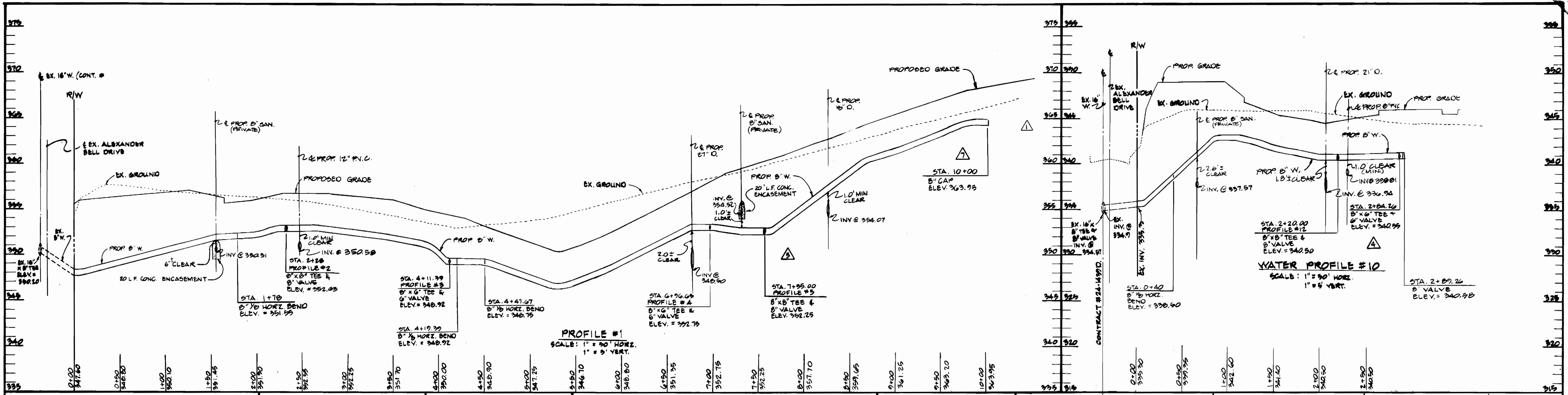
CONTRACT. NO. 44-1579-D

SCALE  
AS  
SHOWN

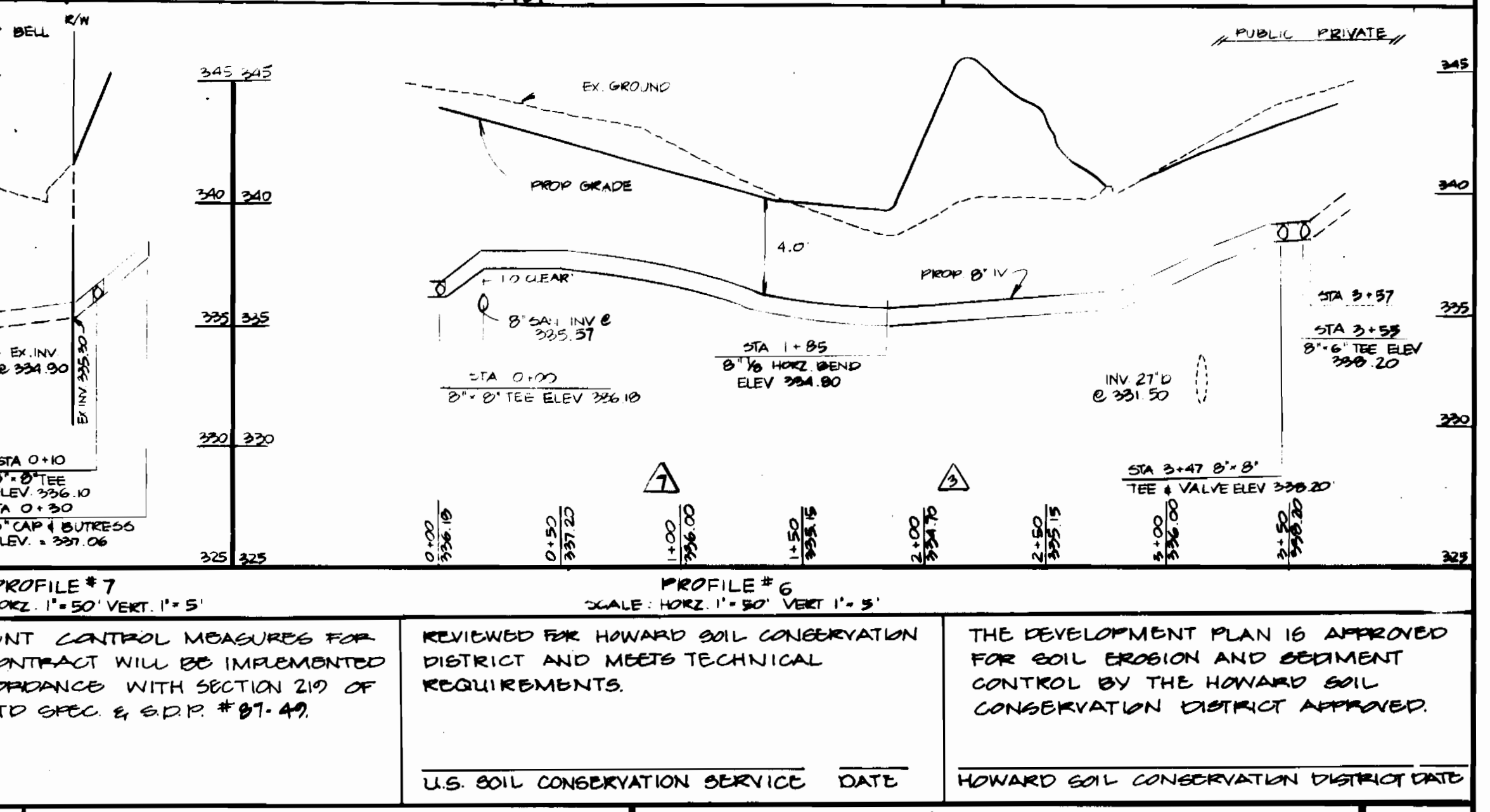
SHEET  
1A OF 2

BRUNING 44-132-09150





QUANTITIES			
ITEM	ESTIMATED	AS-BUILT	MATERIAL/SUPPLIER
8" x 10" HORIZ. BEND	3	6 EA	DUSTILE/TAYLOR
8" x 8" TEE	4	"	"
8" x 6" TEE	3	3 EA	"
6" VALVE	3	3 EA	MUELLER
6" VALVE	3	3 EA	MUELLER
6" CAP	2	2 EA	TAYLOR
6" F.H.	4	3 EA	MUELLER
6" F.H. VALVE	4	3 EA	MUELLER
6" D.I.P.	110 LF	CL. 52	MAJANE
6" D.I.P.	110 LF	"	"
8" SLEEVE	3	3 EA	MUELLER



DEPARTMENT OF PUBLIC WORKS  
 HOWARD COUNTY, MARYLAND  
 Director of Public Works: [Signature]  
 Chief, Bureau of Utilities: [Signature]  
 Chief, Bureau of Engineering: [Signature]  
 Chief, Land Development Div.: [Signature]

GEORGE W. STEPHENS JR. & ASSOCIATES, INC.  
 505 ALLEGHENY AVENUE  
 TOWSON, MARYLAND 21204  
 (301) 825-8120



DESIGNED BY:	BY:	NO.	REVISIONS	DATE
K.L.B.	K.L.B.	1	PROFILE #1 (STA. 2+50 TO STA. 10+74) ADDED 22.14 LF	4/28/87
D.L.K.B.	K.L.B.	2	PROFILE #6 (FROM STA. 10+41.86 TO STA. 10+34.00)	4/28/87
D.B.	K.L.B.	3	PROFILE #7, #8 & #9	4/28/87
	K.L.B.	4	WATER CONNECTION TO BLOS 'A' (PROFILES #10 & #12)	4/29/87
	K.L.B.	5	WATER CONNECTION TO BLOS 'C' (PROFILES #1 & #5)	4/29/87
	K.L.B.	6	WATER CONNECTION TO BLOS 'B' (PROFILE #2)	4/29/87
	K.L.B.	7	OMITTED PROFILES #0, 7, 8 & 9 & REV. PROFILE #1 & BILL OF MATERIALS	4/29/87

PLAN  
 -FOR-  
 PROPOSED WATER MAIN  
 CONTRACT NO. 44-1570-D  
 800' SCALE MAP No. 42 & 43 BLOCK No. 1 & 6

COLUMBIA GATEWAY  
 PARCEL 'C'  
 HOWARD COUNTY, MD.  
 SEPT. 16, 1986  
 U.S. SOIL CONSERVATION SERVICE DATE  
 HOWARD SOIL CONSERVATION DISTRICT DATE

SCALE AS SHOWN  
 SHEET 2 OF 2

AS-BUILT