

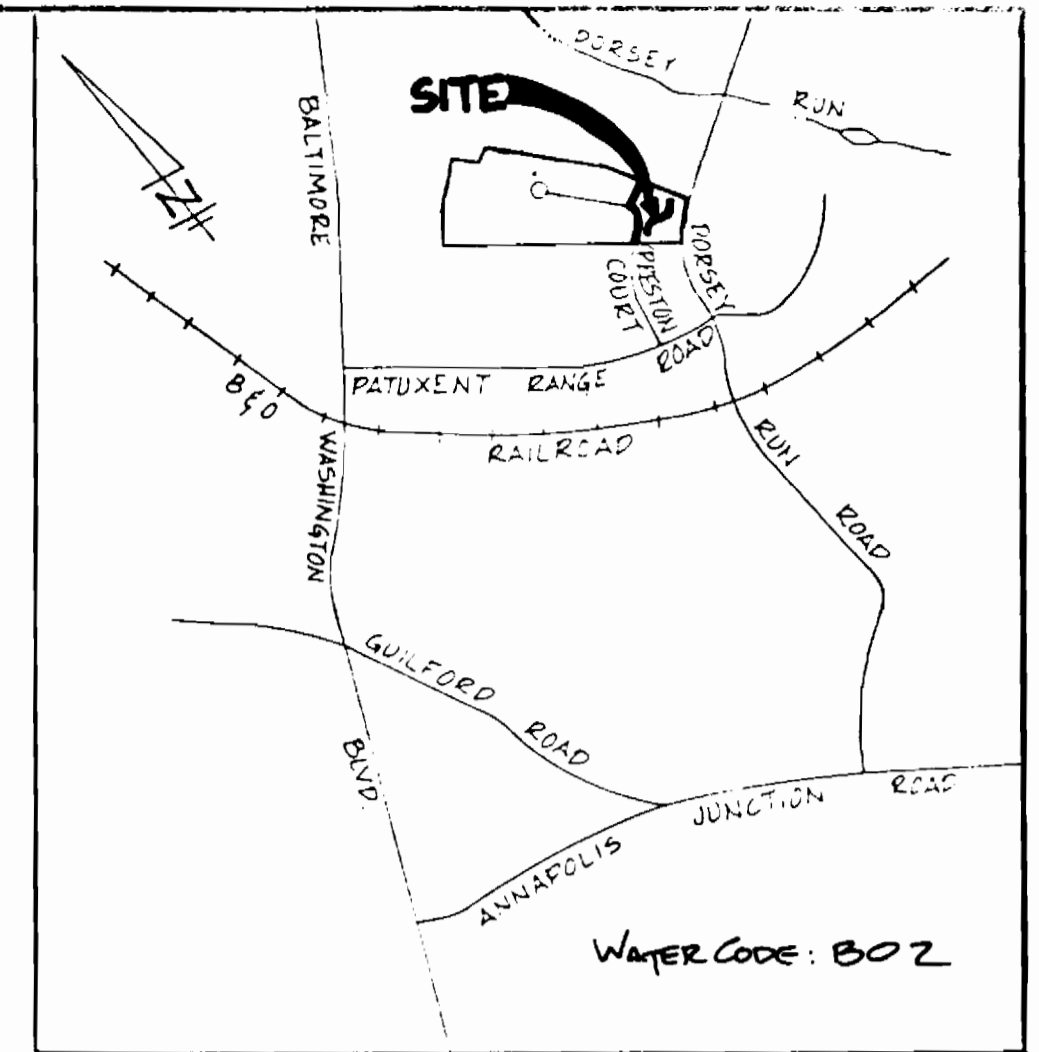
BALTIMORE WASHINGTON INDUSTRIAL PARK - SEC. II

DEPARTMENT OF PUBLIC WORKS

6th. ELECTION DISTRICT

HOWARD COUNTY, MARYLAND

CONTRACT NO.
44-1577-D



VICINITY MAP
SCALE: 1"=2000'

PSJ BM #4
R.R. SPIKE SET IN CIP 24" G.P. #263452, S. SIDE
PORSEY RUN ROAD. ELEV. 211.740

PSJ BM #7
R.R. SPIKE SET IN G.P. POLE #263450, S. SIDE
PORSEY RUN ROAD. ELEV. 177.244

TYPE OF BUILDING:	WAREHOUSE
NO. OF LOTS:	1
NUMBER OF WATER CONNECTIONS:	2
NUMBER OF SEWER HANS CONN.:	2
DRAINAGE AREA:	DESERTY RAIN

WATER & SEWER CODES	
SEWER CODE:	B020000
WATER CODE:	B02

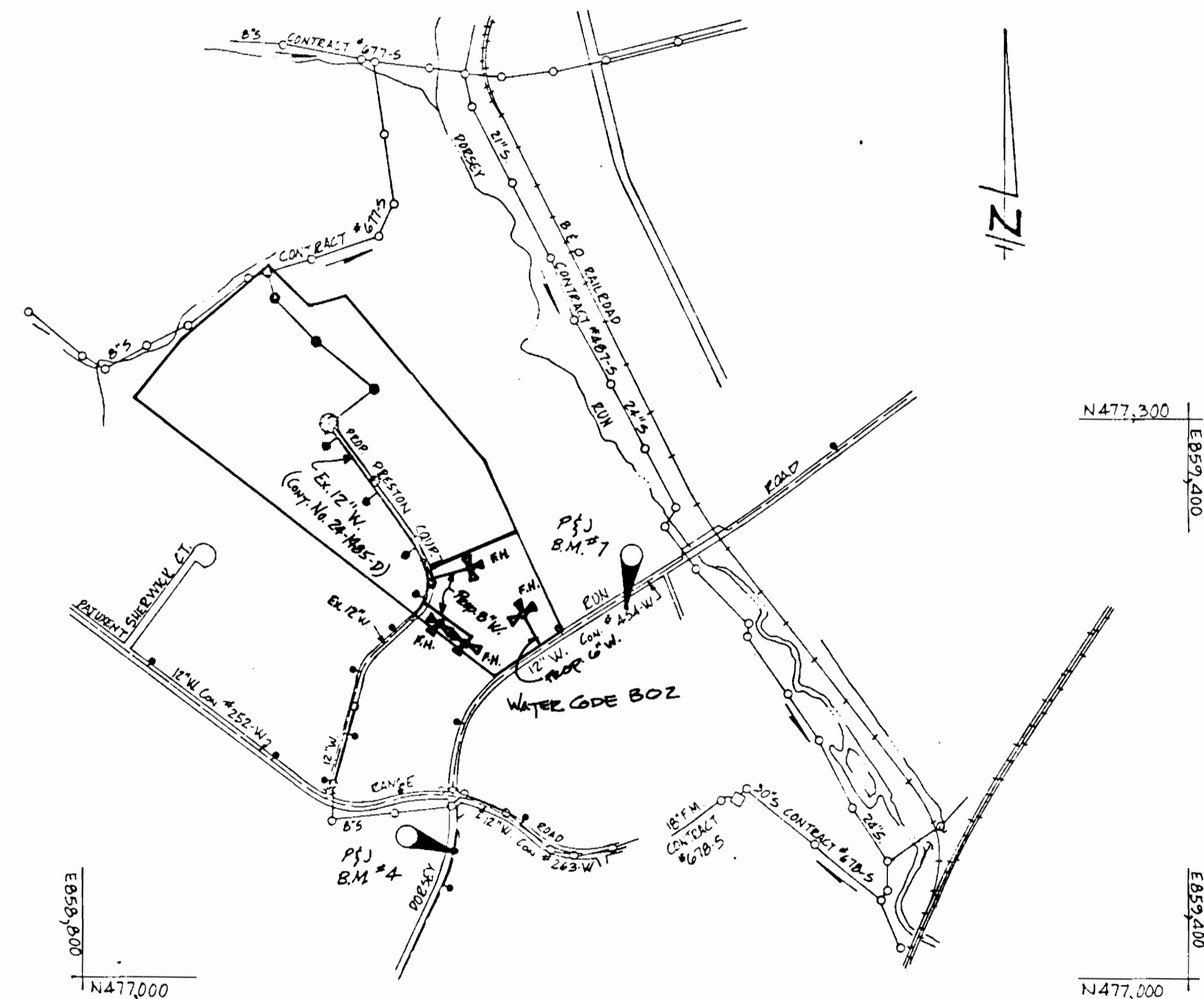
GENERAL NOTES:

PART I

- APPROXIMATE LOCATION OF EXISTING MAINS ARE SHOWN. THE CONTRACTOR SHALL TAKE ALL NECESSARY PRECAUTIONS TO PROTECT EXISTING MAINS AND SERVICES AND MAINTAIN UNDERGROUND SERVICES UNLESS OTHERWISE NOTED. ANY DAMAGE TO EXISTING UTILITIES SHALL BE REPAIRED IMMEDIATELY TO THE SATISFACTION OF THE ENGINEER AT THE CONTRACTOR'S EXPENSE.
- ALL HIGHWAY CONTROLS ARE BASED ON MARYLAND STATE COORDINATES.
- ALL VERTICAL CONTROLS ARE BASED ON U.S.G.S. DATUM.
- ALL PIPE ELEVATIONS SHOWN ARE INVERT ELEVATIONS.
- CLEAR ALL UTILITIES BY A MINIMUM OF 6". CLEAR ALL POLES BY 21'-0" MIN. OR TUNNEL AS REQUIRED. ANY COST INCURRED TO THE CONTRACTOR FOR TUNNELING OR BRACING AT POLES SHALL BE INCLUDED IN UNIT PRICES BID FOR CONSTRUCTION OF MAINS.
- FOR DETAILS NOT SHOWN ON DRAWINGS USE HOWARD COUNTY STANDARD DETAILS.
- FOR MATERIALS AND CONSTRUCTION METHODS USE HOWARD COUNTY STANDARD SPECIFICATIONS.
- CONTRACTOR SHALL NOTIFY STATE UTILITIES A MINIMUM OF TWO (2) WEEKS IN ADVANCE OF CONSTRUCTION OPERATIONS IN THE VICINITY OF PROPOSED UTILITIES AT HIS OWN EXPENSE.
- CONTRACTOR SHALL NOTIFY THE FOLLOWING UTILITIES OR AGENCIES AT LEAST FIVE (5) WORKING DAYS BEFORE STARTING WORK SHOWN ON THESE PLANS:
 - STATE HIGHWAY ADMINISTRATION: 531-5533
 - BALTIMORE GAS AND ELECTRIC CO. - UNDERGROUND ELECTRIC DISTRIBUTION (CUSTOMER SERVICE): 685-0123
 - BALTIMORE GAS AND ELECTRIC CO. - UNDERGROUND GAS DISTRIBUTION (CUSTOMER SERVICE): 685-0123
 - ENGINEERING "WATER CONTROL": 234-5621
 - "MISS UTILITY": (1) 553-0100
 - CHESAPEAKE AND POTOMAC (C & P) TELEPHONE COMPANY: 725-9976
 - AMERICAN TELEPHONE AND TELEGRAPH - CABLE LOCATION DIV.: 393-3553
 - COLONIAL PIPELINE COMPANY: 795-1390
 - BUREAU OF UTILITIES HOWARD COUNTY: 992-2366
- TREES ARE TO BE PROTECTED FROM DAMAGE TO MAXIMUM EXTENT. TREES LOCATED WITHIN THE CONSTRUCTION STRIP ARE NOT TO BE REMOVED OR DAMAGED BY THE CONTRACTOR.
- CONTRACTOR SHALL REMOVE TREES, STUMPS AND ROOTS ALONG LINE OF EXCAVATION AS DIRECTED BY THE ENGINEER. PAYMENT FOR SUCH REMOVAL SHALL BE INCLUDED IN THE UNIT PRICE BID FOR EXCAVATION AND BACKFILL.
- PLACE REGULATION "MEN WORKING" AND WARNING SIGNS AS REQUIRED TO COMPLY WITH MARYLAND STATE HIGHWAY ADMINISTRATION MANUAL OF TRAFFIC CONTROL FOR HIGHWAY CONSTRUCTION AND MAINTENANCE OPERATIONS.

PART II

- ALL WATER MAINS TO BE C.I.P. OR D.I.P. UNLESS OTHERWISE NOTED.
- TOP OF ALL WATER MAINS TO HAVE A MINIMUM OF 3 1/2" COVER UNLESS OTHERWISE NOTED.
- VALVES ADJACENT TO TEES SHALL BE STRAPPED TO TEES.
- BLOCK ALL FITTINGS WITH CONCRETE.
- BURY PIPE ELEVATIONS ON FIRE HYDRANTS SHALL BE SET TO THE ELEVATIONS SHOWN ON THE DRAWINGS. ALL FIRE HYDRANTS SHALL BE STRAPPED AND BUTTRESSED WITH CONCRETE IN ACCORDANCE WITH STANDARD DETAILS. SOIL AROUND THE FIRE HYDRANT TO BE COMPACTED IN ACCORDANCE WITH SECT. 1003 & 1008 OF THE STANDARD SPECIFICATIONS.
- THE CONTRACTOR SHALL NOT OPERATE ANY WATER MAIN VALVES ON THE EXISTING SYSTEM.
- SERVICE CLAMPS ARE TO HAVE STAINLESS STEEL STRAPS.



LOCATION PLAN
SCALE: 1"=600'

INDEX OF SHEETS

SHEET NO.	DESCRIPTION
1	TITLE SHEET
2	WATER MAIN - PLAN & PROFILE

QUANTITIES				
ITEM	UNIT	ESTIMATED	AS-BUILT	MATERIAL-SUPPLIER
12" TAPPING SLEEVE & VALVE	EACH	1	1	
6" D.I.P.	L.F.	230	230	Griffin Pipe Products Co.
8" D.I.P.	L.F.	600	600	Griffin Pipe Products Co.
8" x 6" TEE	EACH	1	1	Griffin Pipe Products Co.
8" x 1/2" BEND	EACH	1	1	Griffin Pipe Products Co.
6" FIRE HYDRANT	EACH	4	4	US PIPE & Foundry
12" x 8" TEE	EACH	2	2	Griffin Pipe Products Co.
8" x 6" END	EACH	1	1	Griffin Pipe Products Co.
8" VALVE	EACH	2	2	US PIPE & Foundry
6" VALVE	EACH	2	2	US PIPE & Foundry
8" x 1/2" BEND	EACH	2	2	Griffin Pipe Products Co.

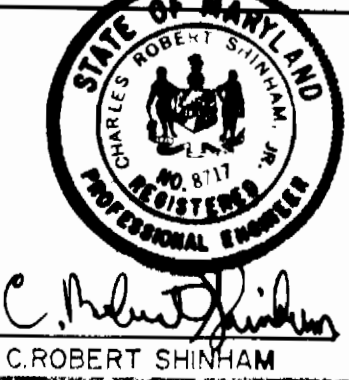
REVIEWED FOR HOWARD SOIL CONSERVATION DISTRICT AND MEETS TECHNICAL REQUIREMENT
 Signature: [Signature] Date: 10-16-86
 U.S. SOIL CONSERVATION SERVICE

THIS DEVELOPMENT PLAN IS APPROVED FOR SOIL EROSION AND SEDIMENT CONTROL BY THE HOWARD COUNTY CONSERVATION DISTRICT
 Approved: [Signature] Date: 10-16-86
 HOWARD S.C.D.

NOTE: SEDIMENT CONTROL MEASURES WILL BE IMPLEMENTED IN ACCORDANCE WITH ARTICLE 15 OF THE SPECIFICATIONS AND WITH SITE PLAN S.D.P. 86-235

DEPARTMENT OF PUBLIC WORKS
 HOWARD COUNTY, MARYLAND
 Director of Public Works: [Signature] Date: 10-17-86
 Chief - Bureau of Engineering: [Signature] Date: 10-17-86
 Chief - Bureau of Utilities: [Signature] Date: 10-16-86
 Chief - Land Development Division: [Signature] Date: 10-17-86

THE ARUNDEL CORPORATION
 ARUNDEL CORPORATE CENTER, SUITE 100
 110 WEST RD. TOWSON MD 21204
 (301) 296-6400
 LAND PLANNERS, LAND SURVEYORS, CIVIL ENG.
 [Signature] Date: 9/26/86
 C. ROBERT SHAMAM



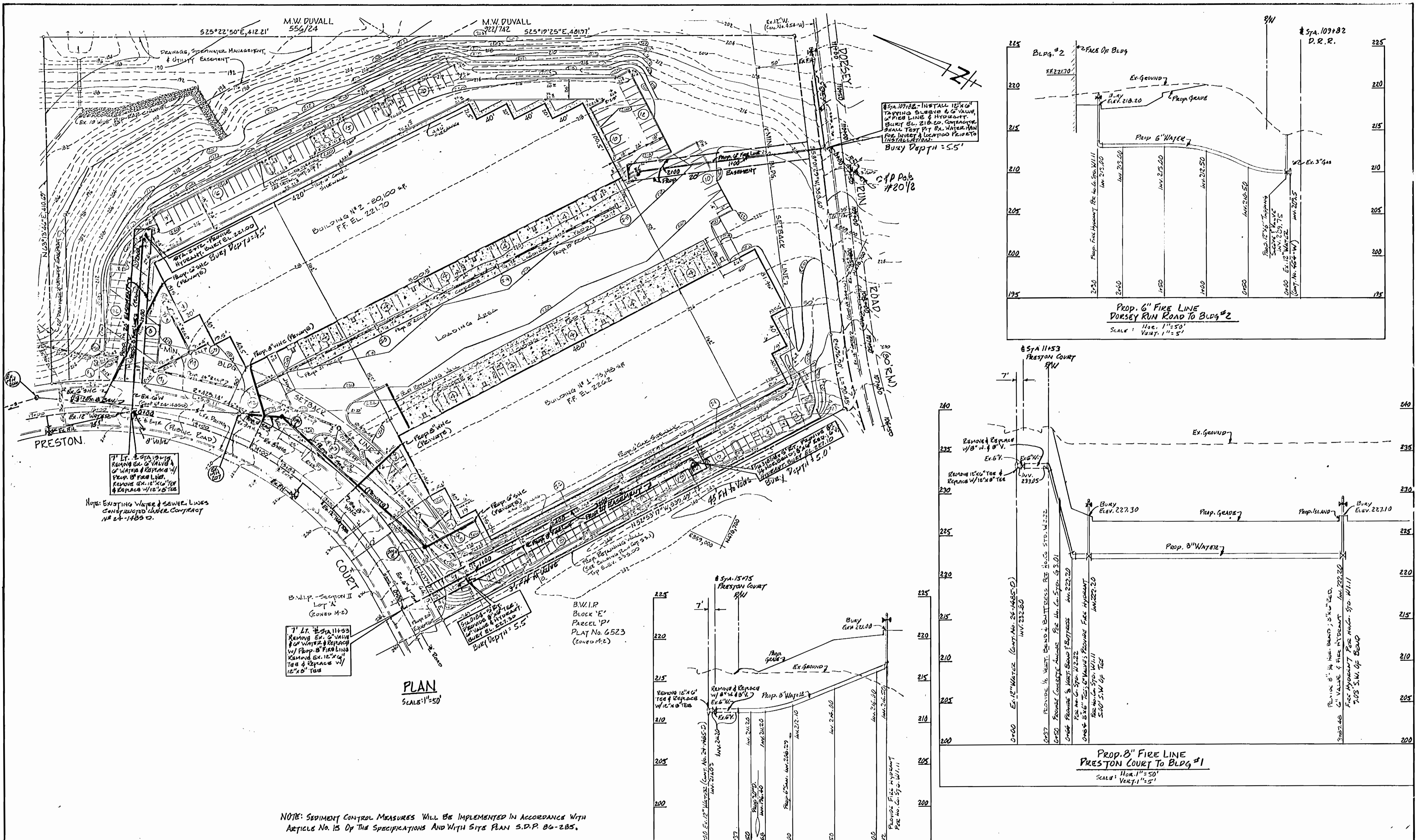
DES: CRS			
DRN: MTY			
CHK: CRS			
DATE: 9-26-86	BY NO.	REVISION	DATE

TITLE SHEET
 CONTRACT NO: 44-1577-D

BALTIMORE WASHINGTON INDUSTRIAL PARK
 SECTION II
 PARCEL 'D'
 TAX MAP 48
 6th. ELECTION DISTRICT

SCALE AS SHOWN
 SET 1 OF 2

AS-BUILT #107 5/11/87



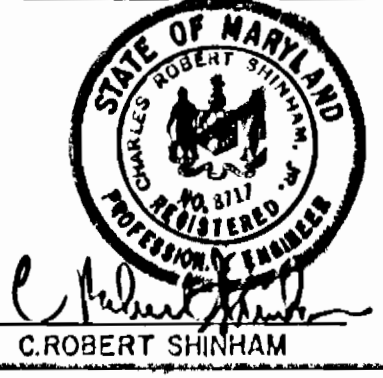
NOTE: SEDIMENT CONTROL MEASURES WILL BE IMPLEMENTED IN ACCORDANCE WITH ARTICLE NO. 15 OF THE SPECIFICATIONS AND WITH SITE PLAN S.D.P. 86-285.

REVIEWED FOR HOWARD SOIL CONSERVATION DISTRICT AND MEETS TECHNICAL REQUIREMENT
 Signature: *[Signature]* Date: 10-16-86
 U.S. SOIL CONSERVATION SERVICE

THIS DEVELOPMENT PLAN IS APPROVED FOR SOIL EROSION AND SEDIMENT CONTROL BY THE HOWARD COUNTY CONSERVATION DISTRICT
 Approved: *[Signature]* Date: 10/16/86
 HOWARD S.C.D.

DEPARTMENT OF PUBLIC WORKS
 HOWARD COUNTY, MARYLAND
 Director: *[Signature]* 10-17-86
 Chief-Bureau of Engineering: *[Signature]* 10-17-86
 Chief-Bureau of Utilities: *[Signature]* 10-16-86
 Chief-Land Development Division: *[Signature]* 10-17-86

THE ARUNDEL CORPORATION
 ARUNDEL CORPORATE CENTER, SUITE 100
 110 WEST RD. TOWSON MD 21204
 (301) 296-6400
 LAND PLANNERS, LAND SURVEYORS, CIVIL ENG.



DES: R.H.J.	M.T.Y.	1	ADD ANCHOR 0+50 PRESTON Cr. TO Bldg #1	12/2/86
DRN: M.T.Y.	M.T.Y.	2	RETYPE DRAWING AND PROFILES	12/2/86
CHK: C.R.S.				
DATE: 9-28-86	BY: NO.		REVISION	DATE

PROPOSED FIRE LINES
 PLAN & PROFILE
 CONTRACT NO: 44-1577-D

BALTIMORE WASHINGTON INDUSTRIAL PARK
 SECTION II
 PARCEL 'D'
 TAX MAP 48
 6th ELECTION DISTRICT
 HOWARD COUNTY, MARYLAND

SCALE
 A3
 SHOWN
 SHEET
 2
 2

AS BUILT 6/1/87 5/13/87