

SEWER HOUSE CONNECTION TABLE					
LOTS	INV.@R	MIN. C.	LOTS	INV.@R	MIN. C.
C-143/C-144	327.46	332.7	C-186/C-187	332.44	342.6
C-145/C-146	332.88	343.1	C-188/C-189	338.00	341.2
C-147/C-148	332.86	343.1	C-190/C-191	336.56	337.2
C-149/C-150	340.42	343.6	C-192/C-193	334.28	337.5
C-151/C-152	332.74	342.2	C-194/C-195	334.68	337.2
C-153/C-154	332.04	342.2	C-196/C-197	337.07	340.3
C-155/C-156	338.12	341.3	C-198/C-199	332.32	342.6
C-157/C-158	336.68	339.2	C-200/C-201	341.82	345.1
C-159/C-160	335.73	338.2	C-202	342.54	345.7
C-161/C-162	334.85	338.0	C-203/C-204	335.10	354.2
C-163/C-164	334.58	337.8	C-205/C-206	342.71	352.2
C-165/C-166	333.17	336.4	C-207	340.67	351.2
C-167/C-168	331.74	334.9	C-208	346.37	350.2
C-169/C-170	330.42	333.6	C-209/C-210	346.60	347.8
C-171/C-172	330.17	333.4	C-211/C-212	346.22	347.4
C-173/C-174	330.30	333.3	C-213/C-214	345.77	347.0
C-175	329.22	333.1	C-215	345.46	348.7
C-176/C-177	329.76	333.0	C-216/C-217	344.37	347.6
C-178/C-179	328.22	332.1	C-218/C-219	342.23	346.1
C-180/C-181	328.32	331.8	C-220/C-221	348.03	351.2
C-182	328.22	331.6	C-222/C-223	350.28	354.2
C-183	328.63	331.2	C-224	353.32	356.6
C-184/C-185	328.48	331.7	C-225/C-226	354.64	357.8

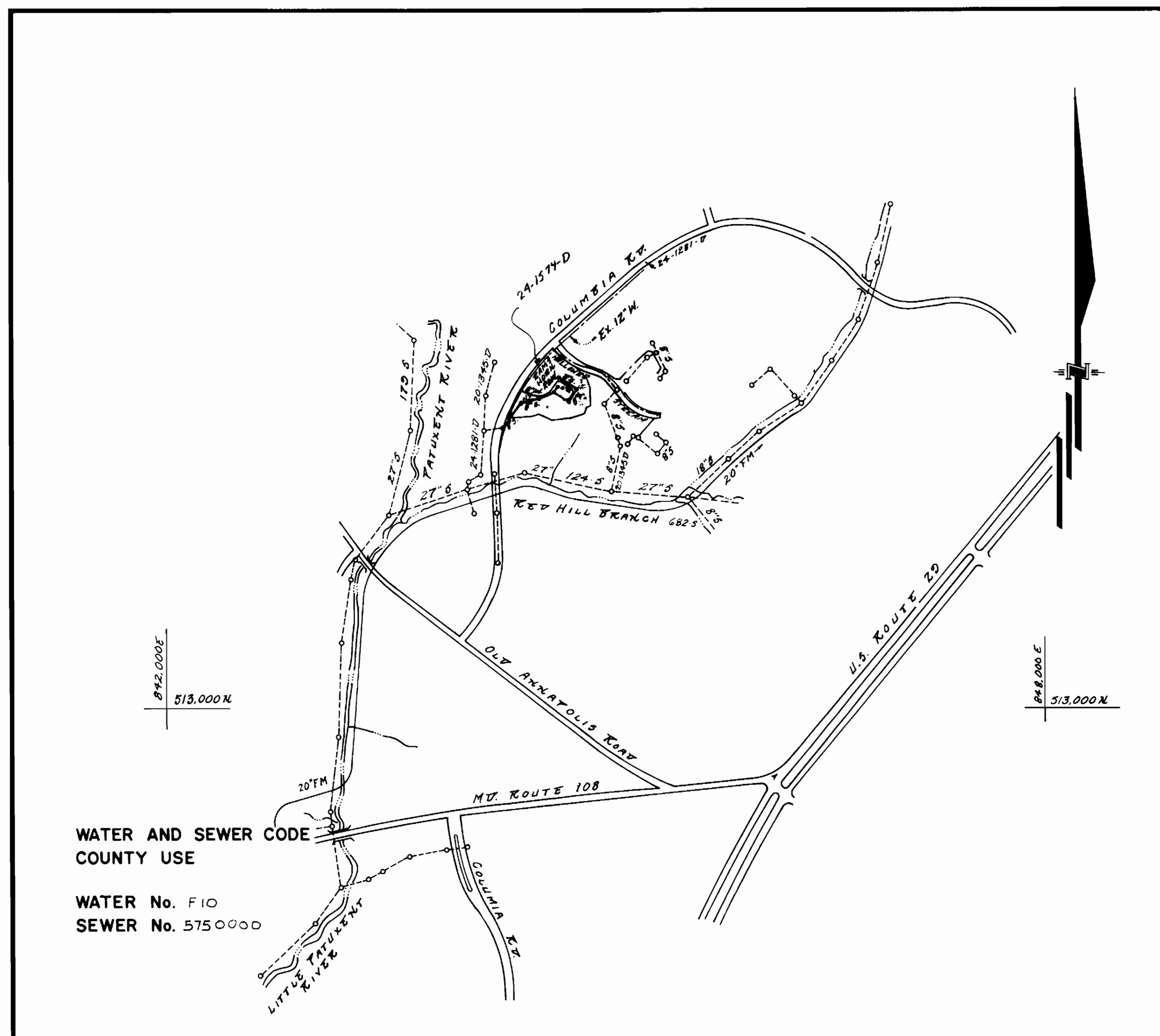
C-186 THRU C-226 NOT INCL IN THIS CONTRACT.

TYPE OF BUILDING	TOWNHOUSE
NUMBER OF UNITS	43
NUMBER OF SHC's	43
NUMBER OF WHC's	43
DRAINAGE AREA	LITTLE PATUMENT (PATAPISCUS) ROUTE 108 PUMPING STATION

GENERAL NOTES

- Approximate locations of existing mains are shown. The contractor shall take all necessary precautions to protect existing mains and services and maintain uninterrupted supply. Any damage incurred shall be repaired immediately to the satisfaction of the Engineer, at the contractor's expense.
- All horizontal controls are based on Maryland State Coordinates.
- All vertical controls are based on U.S.G.S. Datum.
- All pipe elevations shown are invert elevations.
- Clear all utilities by a minimum of 6". Clear all poles by 2'-0" minimum or tunnel as required. Any cost incurred by the contractor for tunneling or bracing at poles shall be included in unit prices bid for construction of the main.
- For details not shown on the drawings, use Howard County Standard Details.
- For materials and construction methods, use Howard County Standard Specifications & Howard County Design Manual, Volume IX. The Contractor shall have a copy of Volume IX on the job.
- Contractor shall locate existing utilities a minimum of two (2) weeks in advance of construction operations in the vicinity of proposed utilities, at his own expense.
- Contractor shall notify the following utilities or agencies at least five (5) working days before starting work shown on these plans.

State Highway Administration	531-5533	Baltimore Gas & Electric Company	
"Miss Utility"	1-559-0100	Contractor Services	561-2585
Chesapeake & Potomac (C&P)		Underground Damage Control	234-5621
Telephone Company	725-9976	Trouble-shooting	298-9013
Colonial Pipeline Company	795-1390	Bureau of Utilities, Howard County	992-2366
- Trees are to be protected from damage to maximum extent. Trees located within the construction strip are not to be removed or damaged by the contractor.
- Contractor shall remove trees, stumps and roots along line of excavation as directed by the Engineer. Payment for such removal shall be included in the unit price bid for construction of the main.
- Place regulation "Men Working" and warning signs as required to comply with Maryland State Highway Administration Manual of Traffic Control for Highway Construction and Maintenance Operations.
- All water mains to be D.I.P. unless otherwise noted.
- Top of all water mains to have a minimum of 3-1/2' cover unless otherwise noted.
- Valves adjacent to tees shall be strapped to tees.
- Block all fittings with concrete.
- Bury line elevations on fire hydrants shall be set to the elevations shown on the drawings. All fire hydrants shall be strapped and buttressed with concrete in accordance with standard details. Soil around the fire hydrant to be compacted in accordance with Sections 1003 and 1008 of the Standard Specifications.
- All water house connections shall be for an inside meter setting.
- The contractor shall not operate any water main valves on the existing system.
- For all Copper Water House Connections, utilize flared type fittings only.
- All sewer mains shall be CSPX, VCPX, R.C.S.P, PVC or ACP - Class 2400 unless otherwise noted.
- The contractor shall provide a joint in all sewer mains within 2'-0" of exterior manhole wall.
- All manholes shall be 4'-0" inside diameter, unless otherwise noted.
- 12" and 16" manhole wall thicknesses shown on profiles pertain to brick manholes only.
- Manholes designated W.T. in plan and profile shall have watertight frames and covers. (See Standard Detail G.5.52) Where watertight manhole frame and cover is used, set top of frame 1'-6" above finished grade. (See Standard Detail G.5.41)
- House(s) with the symbol "CNS" indicates that cellar cannot be served.
- Water main and water house connection lines must have a minimum of one foot separation from either sanitary sewer or sewer house connections as they cross. Except at crossings, water and sewer lines shall have a minimum horizontal separation of 10'.



VICINITY MAP
SCALE: 1" = 600'

CONTRACT NO. 24-1574 D

DORSEY HALL

SECTION 2 AREA 2

HOWARD COUNTY, MARYLAND

DEPARTMENT OF PUBLIC WORKS

Sediment Control Measures will be implemented in accordance with SECTION 217 of the Specifications & with Road Construction Plan F 87-38 ; Drawings 4 & 5 Sediment & Erosion Control.

REVIEWED FOR HOWARD SOIL CONSERVATION DISTRICT AND MEETS TECHNICAL REQUIREMENT.

[Signature] 5-27-87
SIGNATURE DATE

U.S. SOIL CONSERVATION SERVICE

THIS DEVELOPMENT PLAN IS APPROVED FOR SOIL EROSION AND SEDIMENT CONTROL BY THE HOWARD SOIL CONSERVATION DISTRICT.

APPROVED:
[Signature] 5/27/87
HOWARD, S.C.D. DATE

QUANTITIES			
ITEM	ESTIMATED	AS-BUILT	MATERIAL / SUPPLIER
8" W	331 L.F.	331 L.F.	GRIFFIN PIPE PRODUCTS CO.
6" W	260 L.F.	260 L.F.	GRIFFIN PIPE PRODUCTS CO.
8" S	855 L.F.	831'	J.M. MANUFACTURING CORP / THE HARRINGTON CORP
6" SHC	677 L.F.	732'	J.M. MANUFACTURING CORP / THE HARRINGTON CORP
2" WHC	75 L.F.	78 1/2'	A.Y. McDONALD / HOWELL METALS
1" WHC	275 L.F.	323'	A.Y. McDONALD / HOWELL METALS
3/4" WHC	785 L.F.	928'	A.Y. McDONALD / HOWELL METALS
F.H.	2 EA.	2	MUELLER / U.S. PIPE FOUNDRY
4" M.H.	7 EA.	7	ATLANTIC CONCRETE PRODUCTS INC. / TRAMP SCOWER
8" V	8 EA.		
6" V. (EX. F.W.)	1 EA.	1	U.S. PIPE & FOUNDRY
12" x 8" T.S. #4	1 EA.	1	U.S. PIPE & FOUNDRY
8" D.C. TYPE B	1 EA.	1	J.M. MANUFACTURING CORP / THE HARRINGTON CORP
1 1/2" DRAIN	1 EA.	1	CURB STOP VALVE / COPPER VALVE / TRAMP SCOWER / A.Y. McDONALD / HOWELL METALS / U.S. PIPE & FOUNDRY

DEPARTMENT OF PUBLIC WORKS
HOWARD COUNTY, MARYLAND

[Signature] 5-28-87
DIRECTOR OF PUBLIC WORKS DATE

[Signature] 5/27/87
CHIEF, BUREAU OF ENGINEERING DATE

[Signature] 5/27/87
CHIEF, LAND DEVELOPMENT DIV. DATE

GW GUTSCHICK LITTLE & WEBER, P.A.
ENGINEERS, PLANNERS, SURVEYORS

3909 NATIONAL DRIVE, SUITE 250, BURTORSVILLE OFFICE PARK
BURTORSVILLE, MD 20886
1301 421-4024



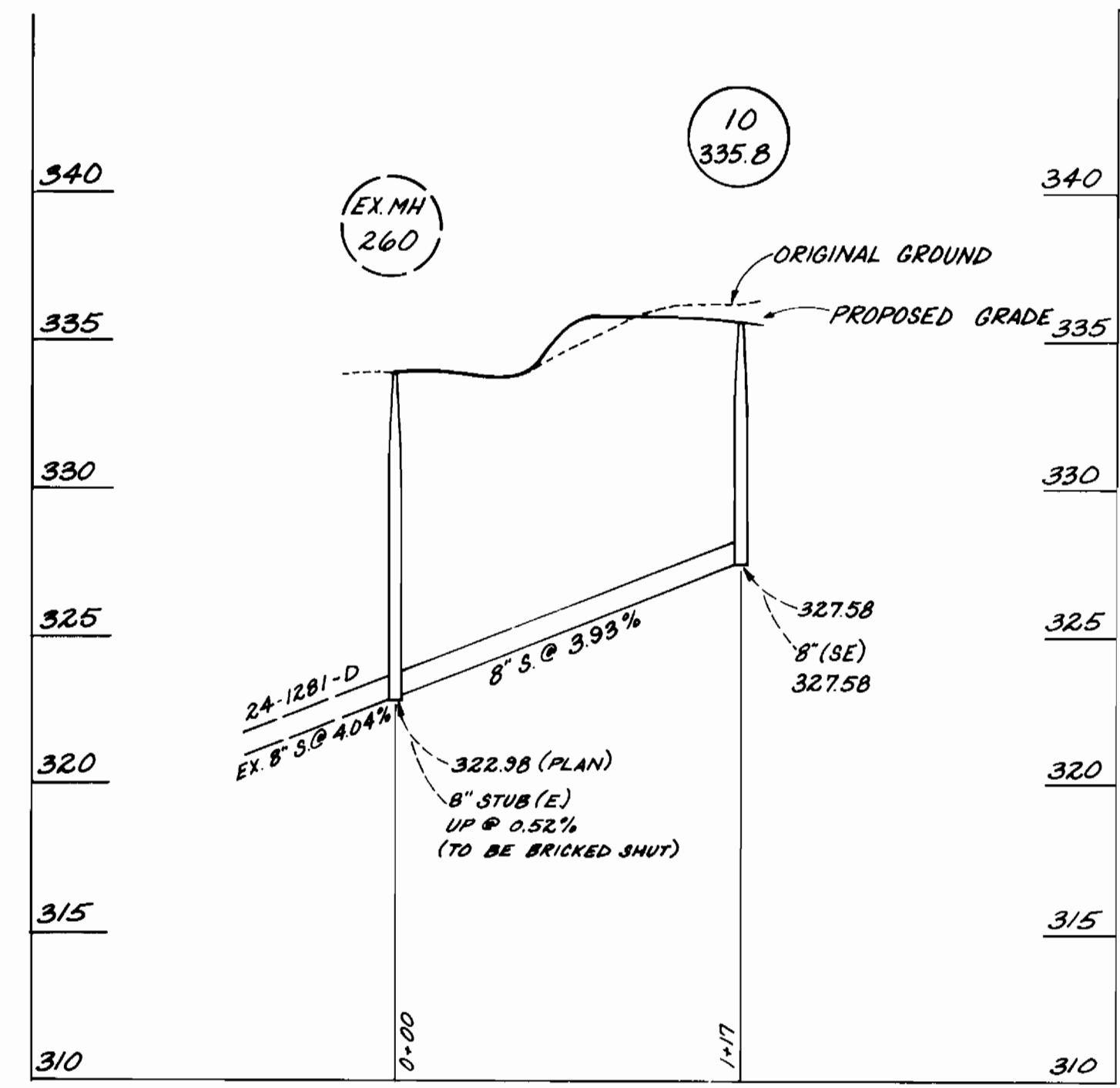
DES: JOC			
DRN: M.S.L.			
CHK: C.K.G.			
DATE: 5-14-87	BY: NO.	REVISION	DATE

TITLE SHEET

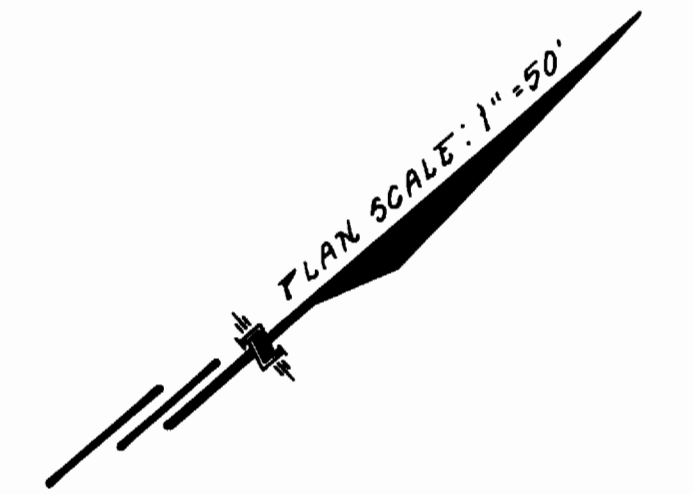
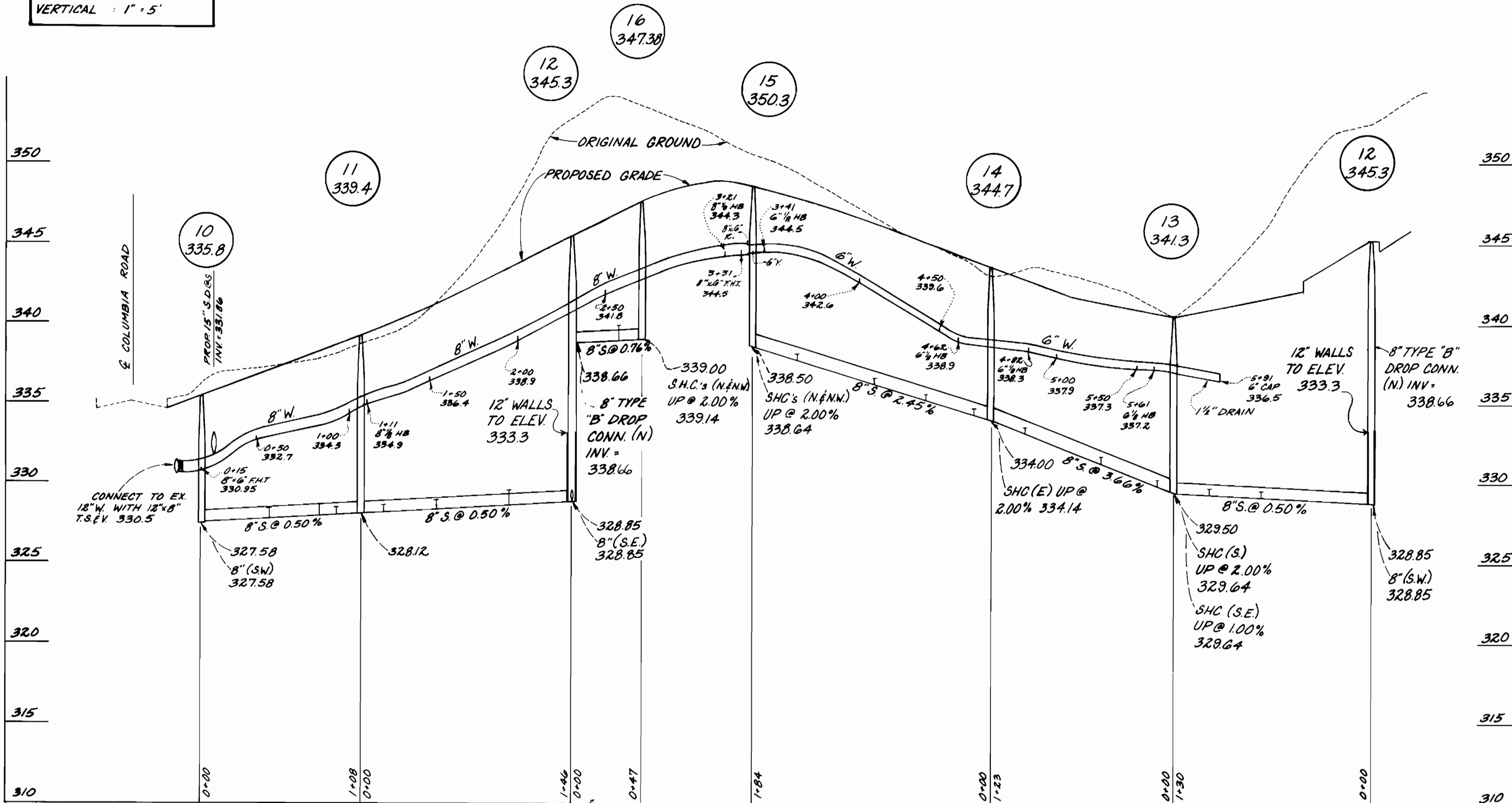
600' SCALE MAP NO. _____ BLOCK NO. _____

DORSEY HALL
SECTION 2 AREA 2
LOTS C-143 THRU C-187
2ND ELECTION DISTRICT
CONTRACT NO. 24-1574-D

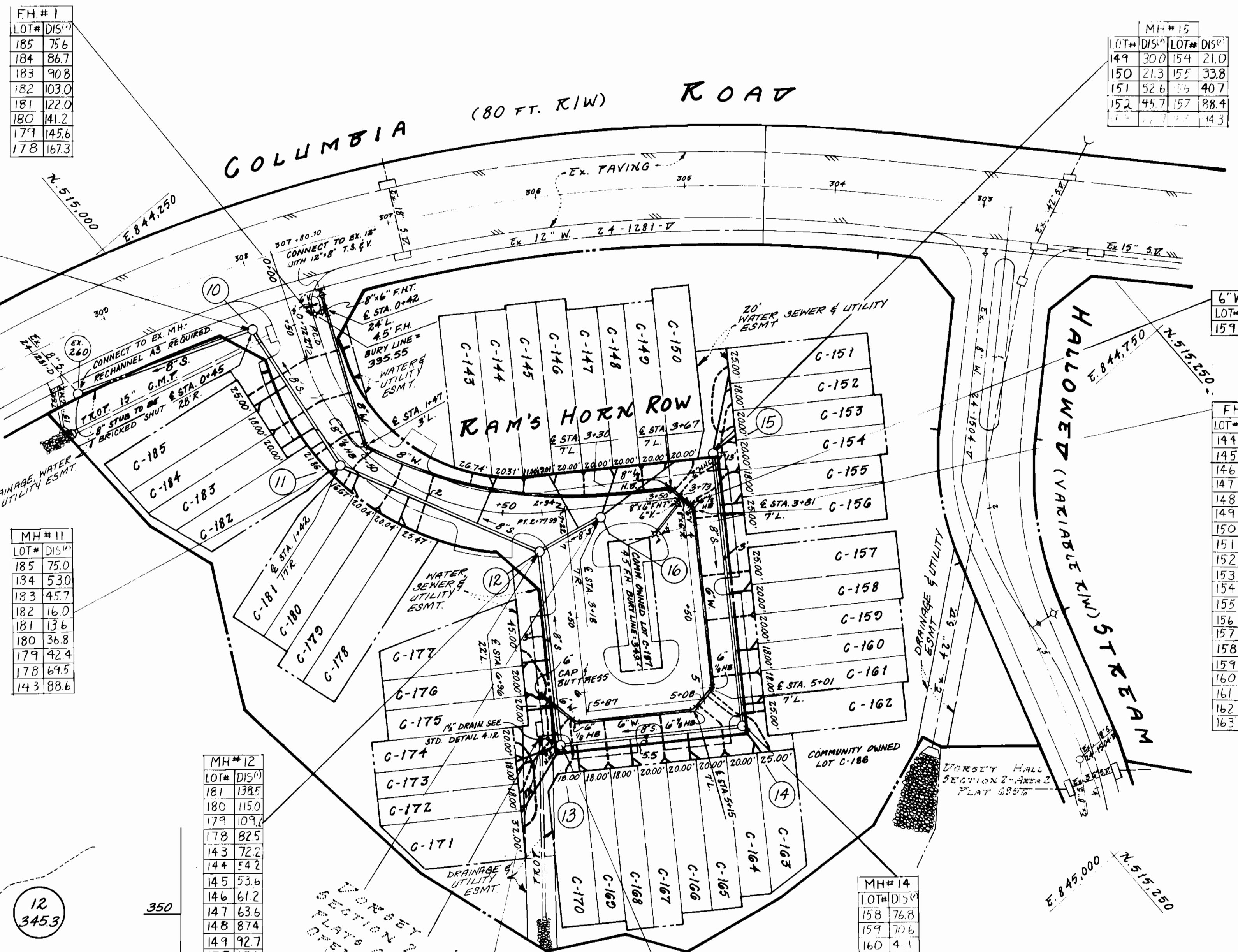
SCALE AS SHOWN
SHEET 1 OF 2



PROFILE SCALE
 HORIZONTAL: 1" = 50'
 VERTICAL: 1" = 5'



MH#	LOT#	DIS#
10	185	46.6
10	184	67.4
10	183	74.3
10	182	74.3
10	179	98.0



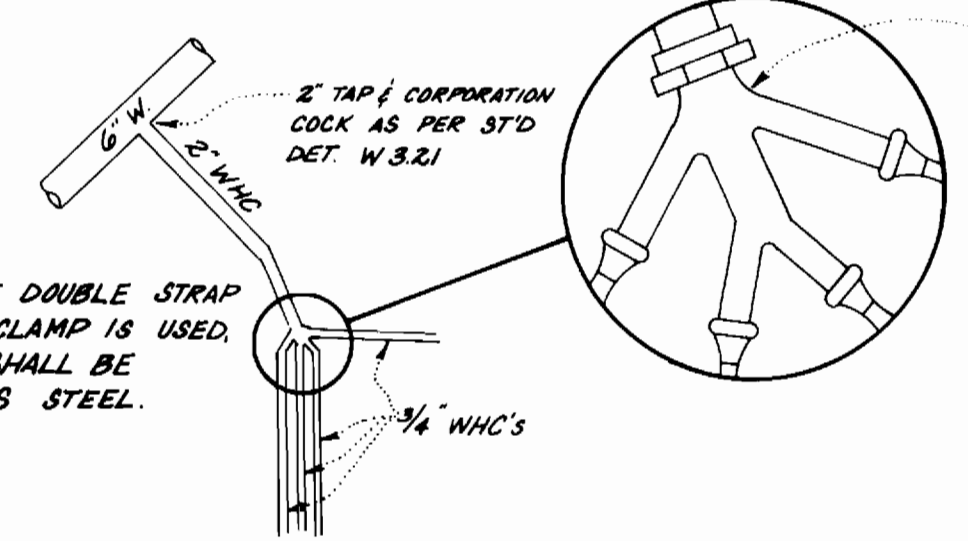
MH#	LOT#	DIS#
15	149	30.0
15	150	21.3
15	151	52.6
15	152	45.7
15	153	15.4
15	154	21.0
15	155	33.8
15	156	40.7
15	157	88.4
15	158	44.3

MH#	LOT#	DIS#
16	144	99.3
16	145	94.0
16	146	67.0
16	147	63.7
16	148	47.5
16	149	47.8
16	150	58.3
16	151	124.2
16	152	105.0
16	153	90.6
16	154	71.7
16	155	70.8
16	156	61.5
16	157	70.4
16	158	85.8
16	159	89.8
16	160	165.9
16	161	120.0
16	162	139.2
16	163	165.0

MH#	LOT#	DIS#
12	181	128.5
12	180	115.0
12	179	109.7
12	178	82.5
12	143	72.2
12	144	54.2
12	145	53.0
12	146	61.2
12	147	63.6
12	148	87.4
12	149	92.7
12	177	67.6
12	176	94.4
12	175	101.0

MH#	LOT#	DIS#
14	158	76.8
14	159	70.6
14	160	4.1
14	161	1.7
14	162	19.5
14	163	25.3
14	164	20.9
14	165	24.3
14	166	53.6
14	167	60.0
14	168	90.0
14	169	95.5
14	170	122.0

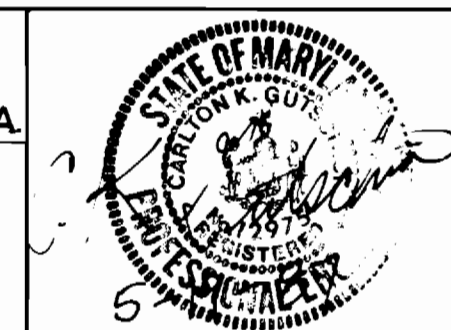
MH#	LOT#	DIS#
13	160	146.4
13	161	149.8
13	162	141.8
13	163	141.4
13	164	118.3
13	165	112.0
13	172	40.8
13	173	32.4
13	174	28.8
13	175	33.0
13	176	37.7
13	177	64.7



3-4-WAY WHC DETAIL
 NO SCALE (LOTS C-151-153 & C-171-174)

DEPARTMENT OF PUBLIC WORKS
 HOWARD COUNTY, MARYLAND
 DATE: 5-28-87
 CHIEF, BUREAU OF UTILITIES

GUTSCHICK LITTLE & WEBER, P.A.
 ENGINEERS, PLANNERS, SURVEYORS
 3909 NATIONAL DRIVE, SUITE 250, BURTONTVILLE OFFICE PARK
 BURTONTVILLE, MD 20886
 (301) 421-4024

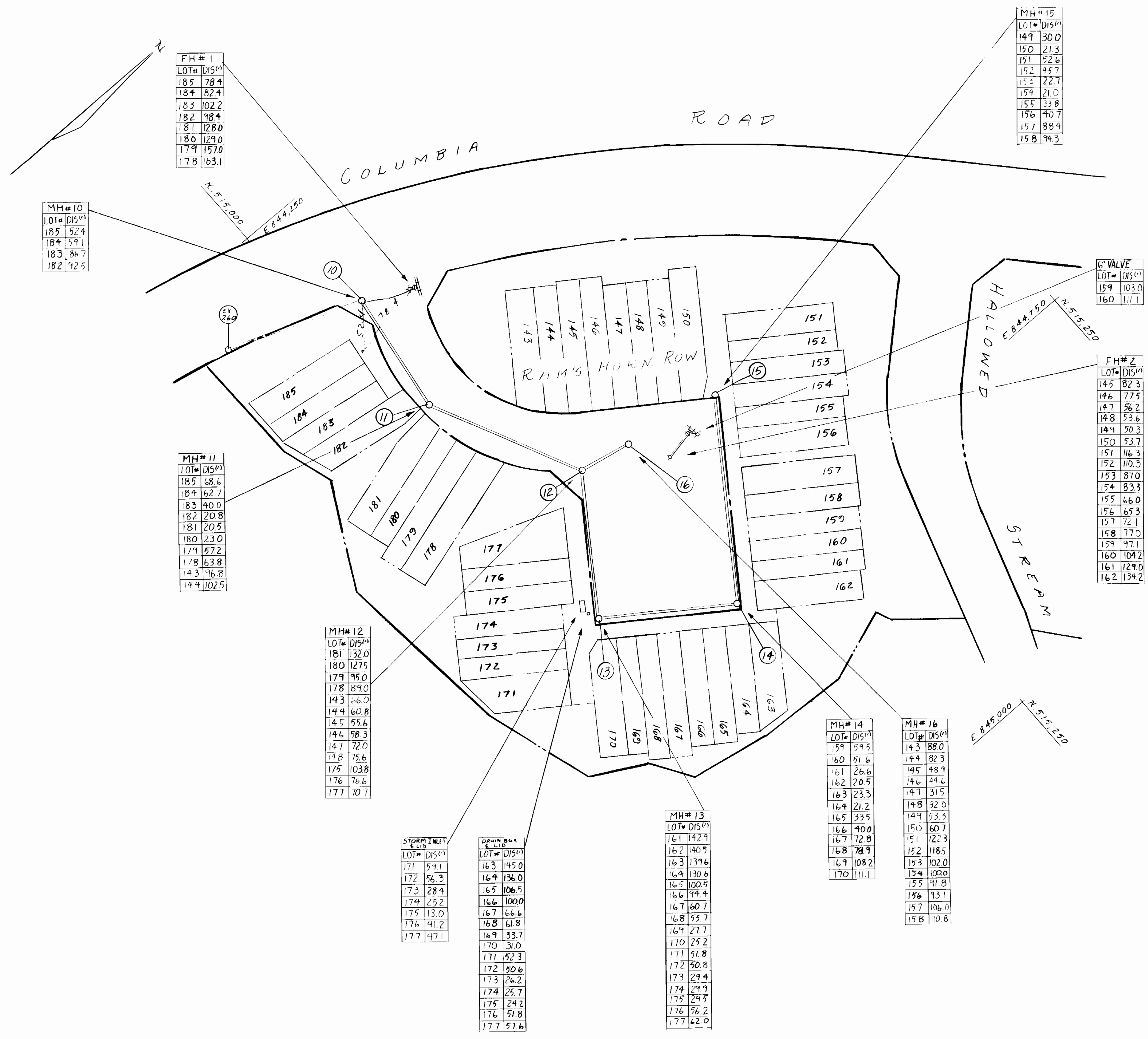


DES: TOC
 DRN: W.S.J.
 CHK: C.K.G.
 DATE: 5-14-87

PLAN AND PROFILES OF
 WATER & SEWER MAINS

DORSEY HALL
 SECTION 2 AREA 2
 LOTS 143 THRU C-187
 2ND ELECTION DISTRICT
 CONTRACT NO. 24-1574-D
 SCALE AS SHOWN
 SHEET 2 OF 2

WATER AS BUILT 3/28/88



DEPARTMENT OF PUBLIC WORKS
HOWARD COUNTY, MARYLAND

DIRECTOR OF PUBLIC WORKS _____ DATE _____ CHIEF, BUREAU OF ENGINEERING _____ DATE _____

DES:				
DRN:				
CHK:				
DATE:	BY	NO.	REVISION	DATE

600' SCALE MAP NO. _____ BLOCK NO. _____

DORSEY HALL
SECTION 2 AREA 2
LOTS 143 THRU C-187
2ND ELECTION DISTRICT
CONTRACT NO. 24-1574-D

SCALE AS SHOWN
SHEET 2A OF _____