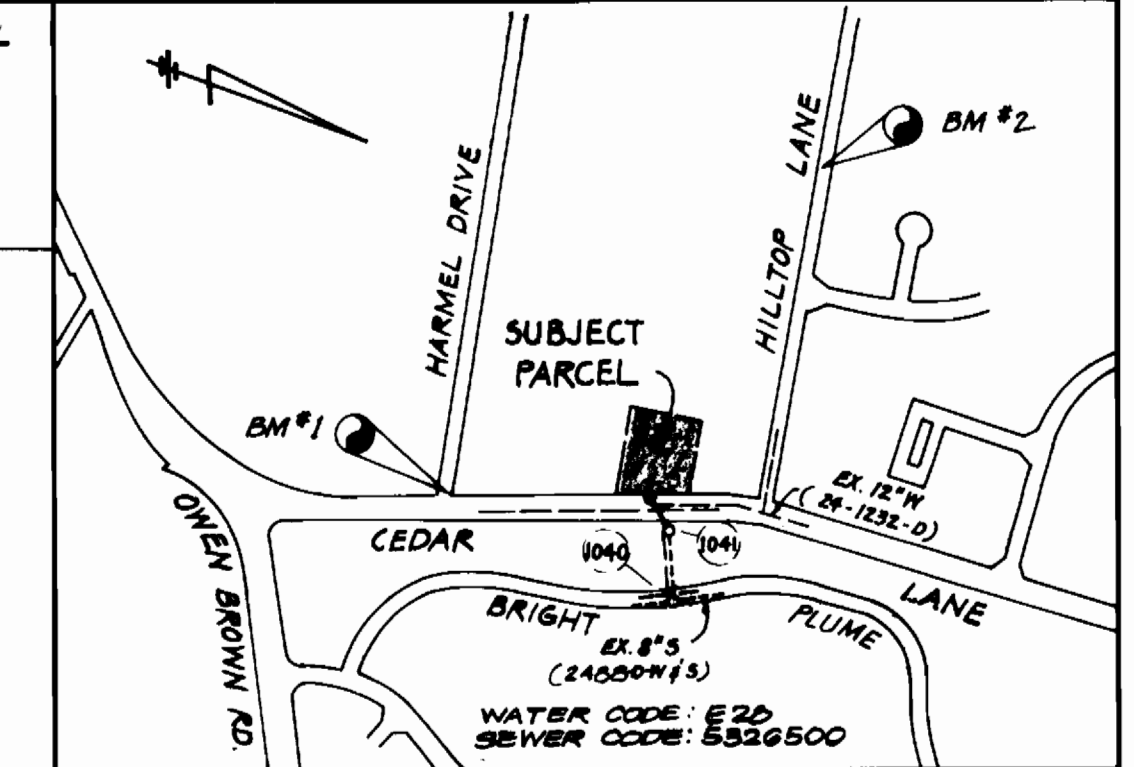


**BENCH MARKS**

B.M. #1 ELEV. 397.70  
 R.R. SPIKE IN C&P POLE #12 ON THE NORTHWEST CORNER OF THE INTERSECTION OF CEDAR LANE AND HARMEL DRIVE.  
 B.M. #2 ELEV. 424.42  
 R.R. SPIKE IN B.G. # E POLE # 229038 ON THE SOUTH SIDE OF HILLTOP LANE 400' ± WEST OF GREEN VIEW WAY.

TYPE OF BUILDING: SINGLE FAMILY RESIDENTIAL  
 NUMBER OF LOTS: 2  
 NO. OF WATER HOUSE CONNECTIONS: 2  
 NO. OF SEWER HOUSE CONNECTIONS: 2  
 DRAINAGE AREA: LITTLE PATUXENT



**VICINITY MAP**  
 SCALE: 1"=600'

**GENERAL NOTES**

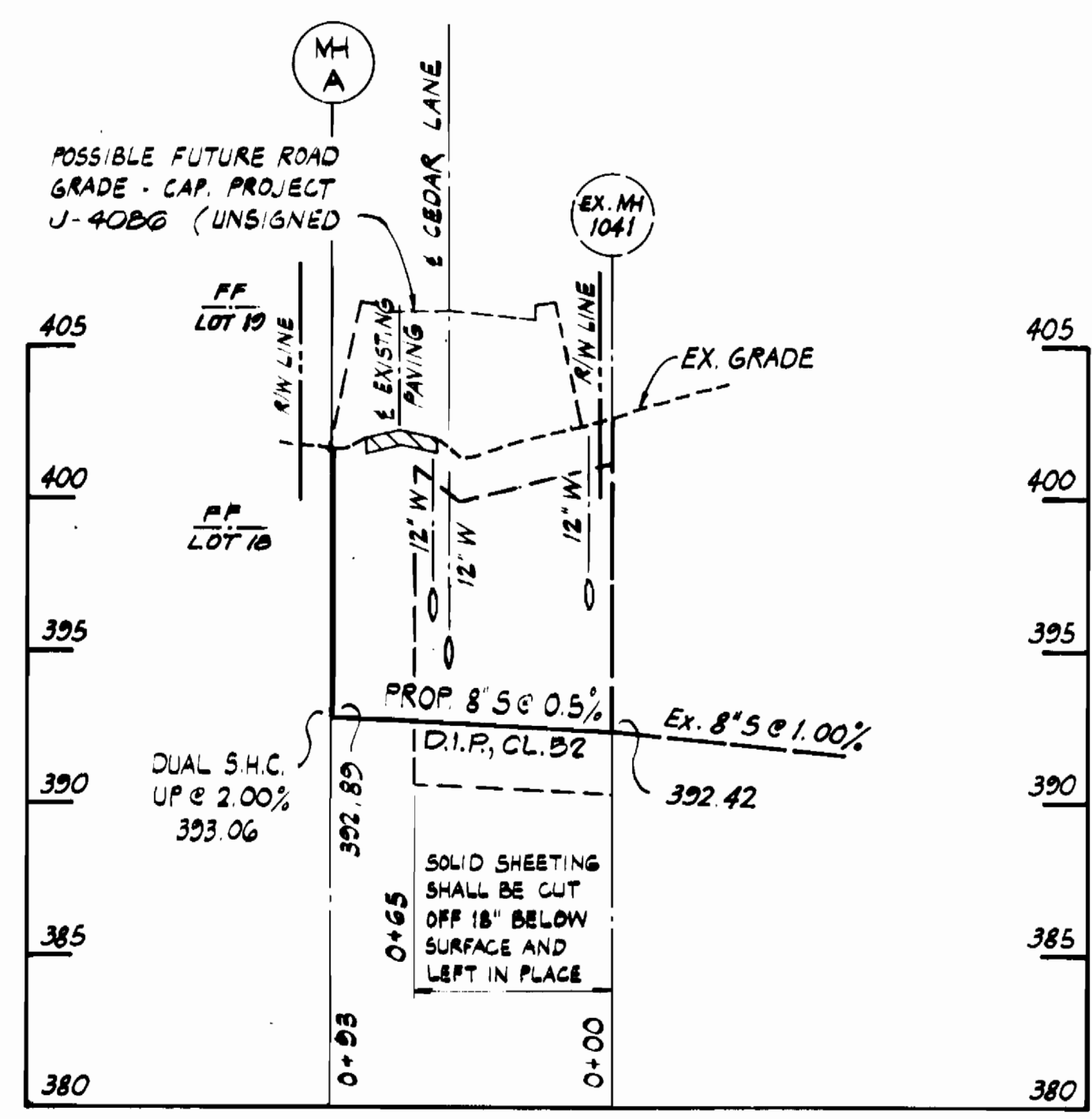
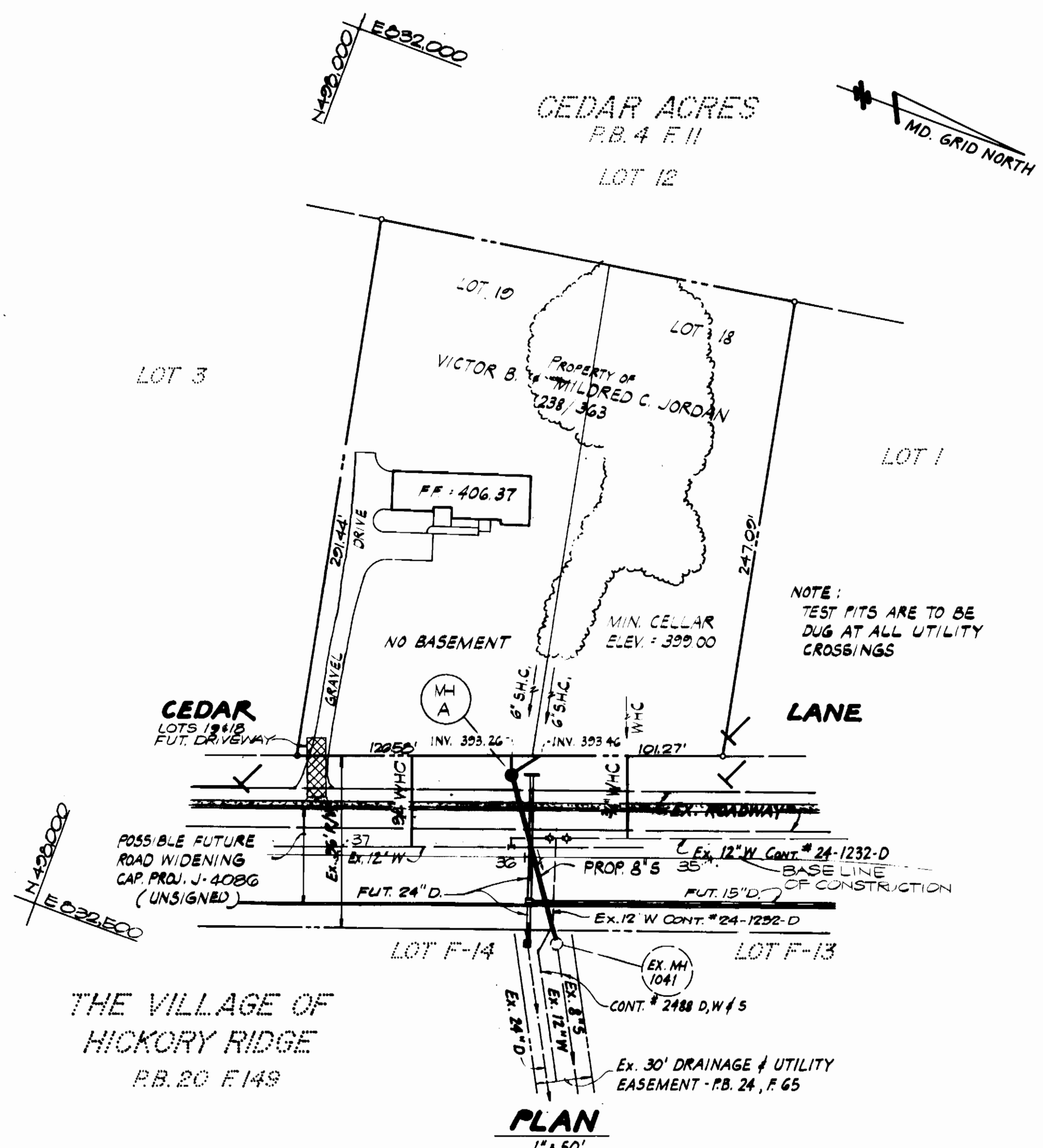
- APPROXIMATE LOCATIONS OF EXISTING UTILITIES ARE SHOWN. THE CONTRACTORS SHALL TAKE ALL NECESSARY PRECAUTIONS TO PROTECT EXISTING MAINS AND SERVICES AND MAINTAIN UNINTERRUPTED SUPPLY. ANY DAMAGE INCURRED SHALL BE REPAIRED IMMEDIATELY TO THE SATISFACTION OF THE ENGINEER, AT THE CONTRACTOR'S EXPENSE.
- ALL PIPE ELEVATIONS SHOWN ARE INVERT (I) ELEVATIONS, UNLESS OTHERWISE INDICATED.
- THE CONTRACTOR SHALL LOCATE EXISTING UTILITIES A MINIMUM OF TWO WEEKS IN ADVANCE OF CONSTRUCTION OPERATIONS IN THE VICINITY OF PROPOSED UTILITIES, AT HIS OWN EXPENSE. ANY CONFLICTS SHALL BE IMMEDIATELY REPORTED TO THE ENGINEER.
- ALL MATERIALS AND CONSTRUCTION SHALL BE PERFORMED IN ACCORDANCE WITH THE HOWARD COUNTY DESIGN MANUAL, VOLUME II, STANDARD SPECIFICATIONS AND DETAILS FOR CONSTRUCTION.
- CLEAR ALL UTILITIES BY A MINIMUM OF 6 INCHES, CLEAR ALL POLES BY 2'-0" MIN. OR TUNNEL, AS REQUIRED. ANY COSTS INCURRED TO THE CONTRACTOR FOR TUNNELING OR BRACING POLES SHALL BE INCLUDED IN THE UNIT PRICES BID FOR PIPE INSTALLATION, AS APPLICABLE.
- THE CONTRACTOR SHALL PROVIDE A JOINT IN ALL SEWER MAINS WITHIN 2'-0" OF EXTERIOR MANHOLE WALLS.
- ALL MANHOLES SHALL BE 4'-0" INSIDE DIAMETER, UNLESS OTHERWISE NOTED.
- TREES ARE TO BE PROTECTED FROM DAMAGE TO MAXIMUM EXTENT. TREES LOCATED WITHIN THE CONSTRUCTION STRIPS ARE NOT TO BE REMOVED OR DAMAGED BY THE CONTRACTOR.
- THE CONTRACTOR SHALL NOTIFY THE FOLLOWING UTILITIES OR AGENCIES AT LEAST FIVE (5) WORKING DAYS BEFORE STARTING WORK ON THIS DRAWING:
 

STATE HIGHWAY ADMINISTRATION	531-5533
B.G. # E. CO. (CONTRACTOR SERVICES)	890-4620
B.G. # E. CO. (UNDERGROUND DAMAGE CONTROL)	850-2004
B.G. # E. CO. (TROUBLE SHOOTING)	290-0001
MISS UTILITY	1-800-257-7777
COLONIAL PIPELINE CO.	795-1390
BUREAU OF UTILITIES, HOWARD COUNTY D.P.W.	992-2366
C&P TELEPHONE CO.	1-800-257-7777
- ALL SEWER MAINS SHALL BE C.S.P.X., V.C.P.X., A.C.P., CLASS 2400, D.I.P. OR F.V.C., UNLESS OTHERWISE NOTED.
- ALL HORIZONTAL CONTROLS ARE BASED ON MARYLAND STATE DATUM.
- ALL VERTICAL CONTROLS ARE BASED ON U.S.G.S. DATUM.
- CONTRACTOR SHALL REMOVE & DISPOSE OF TREES, STUMPS AND ROOTS ALONG LINE OF EXCAVATION, PAYMENT FOR SUCH REMOVAL & DISPOSAL SHALL BE INCLUDED IN THE UNIT PRICE BID FOR PIPE INSTALLATION, AS APPLICABLE.
- PLACE REGULATION "MEN WORKING" AND WARNING SIGNS AS WELL AS OTHER REQUIREMENTS NECESSARY TO COMPLY WITH MARYLAND STATE HIGHWAY ADMIN. MANUAL OF TRAFFIC CONTROL FOR HIGHWAY CONSTRUCTION & MAINTENANCE OPERATIONS.
- "A" DENOTES ASSUMED ELEVATION.
- ALL WATER HOUSE CONNECTIONS SHALL BE FOR AN INSIDE METER SETTING.
- THE CONTRACTOR SHALL NOT OPERATE ANY WATER MAIN VALVES ON THE EXISTING SYSTEM.
- ¾" WATER HOUSE CONNECTION SHALL BE COPPER WITH FLARED TYPE FITTINGS ONLY.
- ALL FITTINGS SHALL BE BUTTRESSED OR ANCHORED WITH CONCRETE IN ACCORDANCE WITH THE STANDARD DETAILS, UNLESS OTHERWISE NOTED.

SEDIMENT CONTROL MEASURES FOR THIS CONTRACT WILL BE IMPLEMENTED IN ACCORDANCE WITH SECTION 219 OF THE HOWARD COUNTY DESIGN MANUAL AND STANDARDS AND SPECIFICATIONS FOR SOIL EROSION AND SEDIMENT CONTROL AND AS PER PLAN F-86-79

REVIEWED FOR HOWARD SOIL CONSERVATION DISTRICT & MEETS TECHNICAL REQUIREMENT  
 SIGNATURE: *James M. ...* DATE: 3/27/87  
 U.S. SOIL CONSERVATION SERVICE  
 THIS DEVELOPMENT PLAN IS APPROVED FOR SOIL EROSION AND SEDIMENT CONTROL BY THE HOWARD COUNTY CONSERVATION DISTRICT.  
 APPROVED: *James D. ...* DATE: 3/27/87  
 HOWARD SCD

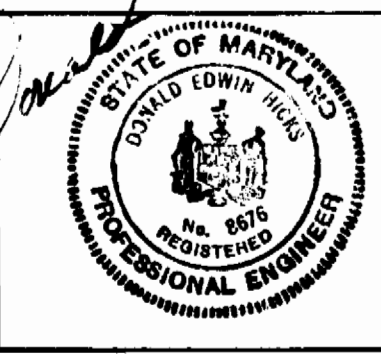
QUANTITIES		
ITEM	ESTIMATED	AS-BUILT
STD MANHOLE	1 EACH	
8" SEWER	93 L.F.	
6" SEWER	30 L.F.	
¾" W.H.C.	45 L.F.	



**PROFILE**  
 HORIZ. : 1"=50'  
 VERT. : 1"=5'

DEPARTMENT OF PUBLIC WORKS  
 HOWARD COUNTY, MARYLAND  
 Director of Public Works: *Robert M. ...* DATE: 4-2-87  
 Chief, Bureau of Engineering: *...* DATE: 4-2-87  
 Chief, Bureau of Utilities: *...* DATE: 4-2-87  
 Chief, Land Development Division: *...* DATE: 4-2-87

HICKS ENGINEERING COMPANY, INC.  
 CIVIL ENGINEERS  
 200 EAST JOPPA ROAD  
 SUITE 402  
 TOWSON, MD 21204



DES: REC			
DRN: REC			
CHK: DEH			
DATE: JULY 1986	BY	NO.	REVISION

PLAN & PROFILE FOR WATER & SEWER MAINS  
 CONTRACT NO. 24-1573-D  
 600' SCALE MAP NO. 35 BLOCK NO.

F-86-79  
 CONTRACT NO. 24-1573-D  
 CEDAR ACRES SUBDIVISION  
 WATER AND SEWER EXTENSION  
 SCALE AS SHOWN  
 SHEET 1 OF 1  
 ELECTION DISTRICT NO. 5  
 HOWARD COUNTY, MARYLAND