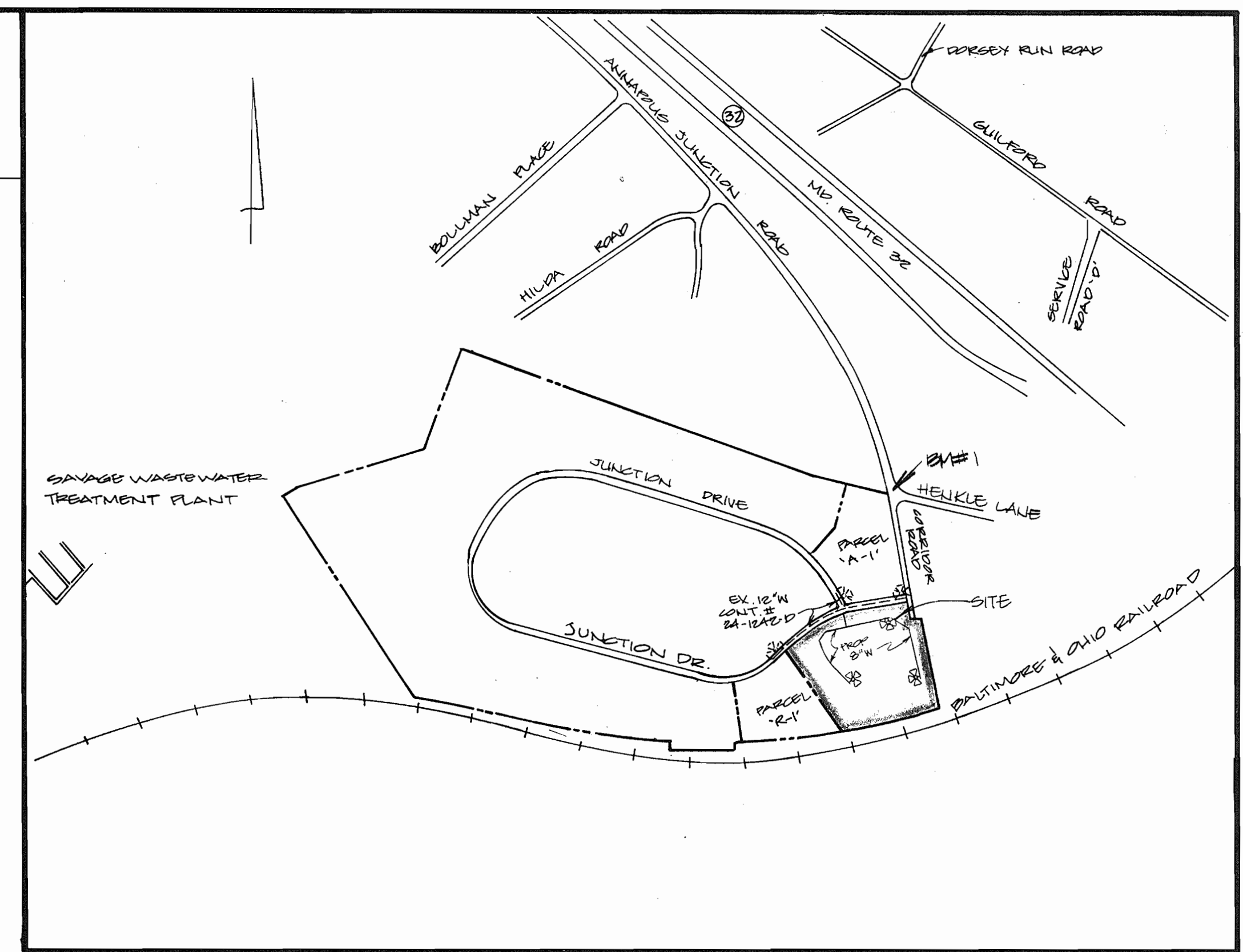


TYPE OF BUILDING: OFFICE / WAREHOUSE  
 NUMBER OF LOTS: 1  
 NUMBER OF WATER H.G.: 1  
 NUMBER OF SEWER H.G.: 1  
 DRAINAGE AREA: LITTLE PATUXENT  
 WATER CODE: 004  
 SEWER CODE: 400,000

JUNCTION I LIMITED PARTNERSHIP  
 1001 - 545  
 THE JUNCTION INDUSTRIAL PARK  
 RESUBDIVISION SECTION I AREA I  
 PARCEL "A-1" PLAT 1001A  
 TAX MAP 40 BLOCK 20 PARCEL 41

JUNCTION I LIMITED PARTNERSHIP  
 1001 - 545  
 THE JUNCTION INDUSTRIAL PARK  
 RESUBDIVISION SECTION I AREA I  
 PARCEL "A-1" PLAT 1001A  
 TAX MAP 40 BLOCK 20 PARCEL 41



LOCATION MAP  
 SCALE 1"=100'

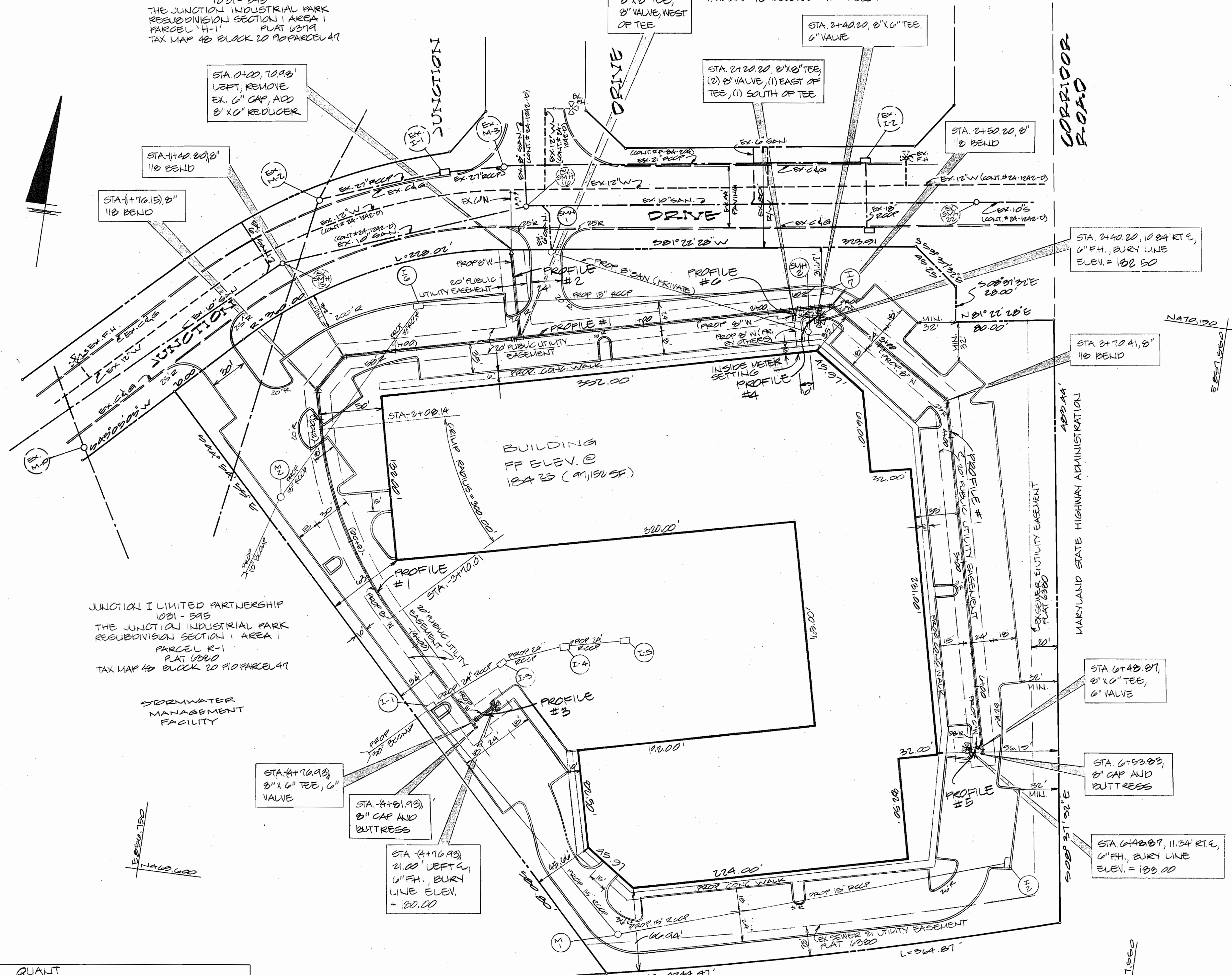
BENCHMARK #1 ELEV. 210.71  
 CUT END CONCRETE NORTH SIDE CORRIDOR RD @  
 INTERSECTION CORRIDOR RD & HENKLE LANE.

PART I

- APPROXIMATE LOCATION OF EXISTING MAINS ARE SHOWN. THE CONTRACTOR SHALL TAKE ALL NECESSARY PRECAUTIONS TO PROTECT EXISTING MAINS AND SERVICE AND MAINTAIN UNINTERRUPTED SUPPLY. ANY DAMAGE INCURRED SHALL BE REPAIRED IMMEDIATELY TO THE SATISFACTION OF THE ENGINEER AT THE CONTRACTORS EXPENSE.
- ALL HORIZONTAL CONTROLS ARE BASED ON MARYLAND STATE COORDINATES.
- ALL VERTICAL CONTROLS ARE BASED ON U.S.G.S. DATA.
- ALL PIPE ELEVATIONS ARE INVERT ELEVATIONS.
- CLEAR ALL UTILITIES BY A MINIMUM OF 1' CLEAR ALL POLES BY 2'-0" MINIMUM OR TUNNEL AS REQUIRED. THE OWNER HAS CONTACTED THE UTILITY COMPANIES AND HAS MADE ARRANGEMENTS FOR BRACING OF POLES AS SHOWN ON THE DRAWINGS. IN THE EVENT THAT THE CONTRACTORS WORK REQUIRES THE BRACING OF ADDITIONAL POLES, ANY COST INCURRED BY THE OWNER FOR THE BRACING OF ADDITIONAL POLES OR DAMAGES SHALL BE DEDUCTED FROM MONEY OWED THE CONTRACTOR. THE CONTRACTOR SHALL COORDINATE WITH THE UTILITY COMPANIES TO SCHEDULE THE BRACING OF THE POLES.
- FOR DETAILS NOT SHOWN ON THE DRAWINGS, AND FOR MATERIALS AND CONSTRUCTION METHODS, USE HOWARD COUNTY DESIGN MANUAL, VOL. IV, STANDARD SPECIFICATIONS AND DETAILS FOR CONSTRUCTION. THE CONTRACTOR SHALL HAVE A COPY OF VOL. IV ON THE JOB.
- WHERE TEST PITS HAVE BEEN MADE ON EXISTING UTILITIES, THEY ARE NOTED BY THE SYMBOL (M) AT THE LOCATION OF THE TEST PIT. A NOTE OR NOTES CONTAINING RESULTS OF THE TEST PITS IS INCLUDED ON THE DRAWINGS. EXISTING UTILITIES IN THE VICINITY OF THE PROPOSED WORK FOR WHICH TEST PITS HAVE NOT BEEN DUG SHALL BE LOCATED BY THE CONTRACTOR 2 WEEKS IN ADVANCE OF CONSTRUCTION OPERATIONS AT HIS OWN EXPENSE.
- CONTRACTOR SHALL NOTIFY THE FOLLOWING UTILITIES OR AGENCIES AT LEAST FIVE WORKING DAYS BEFORE STARTING WORK ON THESE PLANS: STATE HIGHWAY ADMINISTRATION 531-5535, BALTO. GAS & ELECTRIC CO., CONTRACTOR SERVICES 800-422-4222, BALTO. GAS & ELECTRIC CO., UNDERGROUND DAMAGE CONTROL 800-422-4224, BALTO. CO. GAS & ELECTRIC CO. TROUBLE SHOOTING 298-9001, MISS UTILITY 1-559-0100, COLONIAL PIPELINE 793-1390, BUREAU OF UTILITIES, HOWARD CO. DEPT. OF PUBLIC WORKS 992-2366, C&P TELEPHONE 1-800-251-1771.
- TREES AND SHRUBS ARE TO BE PROTECTED FROM DAMAGE TO MAXIMUM EXTENT. TREES AND SHRUBS LOCATED WITHIN THE CONSTRUCTION STRIP ARE NOT TO BE REMOVED OR DAMAGED BY THE CONTRACTOR.
- CONTRACTOR SHALL REMOVE TREES, STUMPS AND ROOTS ALONG LINE OF EXCAVATION. PAYMENT FOR SUCH REMOVAL SHALL BE INCLUDED IN THE UNIT PRICE BID FOR CONSTRUCTION OF THE MAIN.
- PLACE REGULATION "MEN WORKING" WARNING SIGNS AS REQUIRED TO COMPLY WITH MARYLAND STATE HIGHWAY ADMINISTRATIONS MANUAL FOR HIGHWAY CONSTRUCTION AND MAINTENANCE OPERATIONS.

PART II - WATER

- ALL WATER MAINS TO BE D.I.P. UNLESS OTHERWISE NOTED.
- TOP OF ALL WATER MAINS TO HAVE A MINIMUM OF 3' COVER UNLESS OTHERWISE NOTED.
- VALVES ADJACENT TO TEES SHALL BE STRAPPED TO TEES.
- ALL FITTINGS SHALL BE BUTTRESSED OR ANCHORED WITH CONCRETE IN ACCORDANCE WITH THE STANDARD DETAILS UNLESS OTHERWISE PROVIDED ON THE DRAWINGS.
- FIRE HYDRANTS SHALL BE SET TO THE BURY LINE ELEVATIONS SHOWN ON THE DRAWINGS. ALL FIRE HYDRANTS SHALL BE STRAPPED AND BUTTRESSED WITH CONCRETE IN ACCORDANCE WITH STANDARD DETAILS. SOIL AROUND THE FIRE HYDRANT SHALL BE COMPACTED IN ACCORDANCE WITH SECTION 1003 AND 1008 OF THE STANDARD SPECIFICATIONS.
- THE CONTRACTOR SHALL NOT OPERATE ANY WATER MAIN VALVES ON THE EXISTING WATER SYSTEM.
- ALL WATER HOUSE CONNECTIONS SHALL BE INSIDE METER SETTINGS UNLESS OTHERWISE NOTED.
- ALL FIRE HYDRANTS TO BE SET 3 FEET BEHIND PROPOSED FACE OF CURB UNLESS NOTED OTHERWISE.
- ALL WATER HOUSE CONNECTIONS SHALL COMPLY WITH HOWARD CO. STD. 3.21 AS SHOWN ON ARTICIAL 40, SPECIAL PROVISIONS.
- MINIMUM CRIMP RADIUS WILL BE SPECIFIED BY PIPE MANUFACTURER.
- WATER MAINS AND WATER HOUSE CONNECTION LINES MUST BE PLACED SO AS TO HAVE AT LEAST ONE FOOT SEPERATION FROM THE SEWER MAIN HOUSE CONNECTION AS THEY PASS ABOUT IT.
- THE SERVICE CLAMPS ARE TO HAVE STAINLESS STEEL STRAPS.



PLAN  
 SCALE: 1"=50'

ITEM	ESTIMATED	AS-BUILT	MATERIAL SUPPLIER
8" CAP & BUTTRESS	2		
8" VALVE	3		
6" VALVE	3		
8"x8" TEE	2		
8"x6" TEE	3		
8"x6" REDUCER	1		
8" HD HORIZ. BEND	4		
6" F.H.	3		
8" D.I.P.	1212'		
6" D.I.P.	44'		

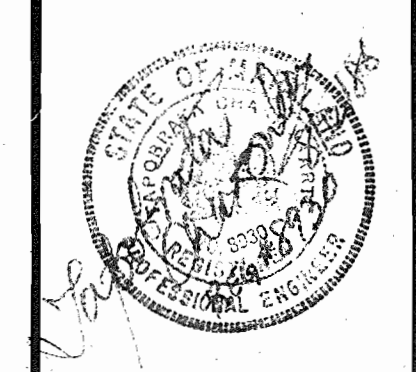
REVIEWED FOR HOWARD SOIL CONSERVATION DISTRICT AND MEETS TECHNICAL REQUIREMENTS  
 J. Halperin  
 U.S. SOIL CONSERVATION SERVICE DATE 10/12/86

THE DEVELOPMENT PLAN IS APPROVED FOR SOIL AND SEDIMENT CONTROL BY THE HOWARD SOIL CONSERVATION DISTRICT.  
 Stephen R. Halperin  
 HOWARD SOIL CONSERVATION DISTRICT DATE 10-27-86

SEDIMENT CONTROL MEASURES FOR THIS CONTRACT WILL BE IMPLEMENTED IN ACCORDANCE WITH SECTION 214 OF THE STANDARD SPECIFICATIONS AND SDP 87-11.

DEPARTMENT OF PUBLIC WORKS  
 DIRECTOR OF PUBLIC WORKS DATE 11-17-86  
 CHIEF BUREAU OF ENGINEERING DATE 11-17-86

ENGINEER  
 GEORGE WM. STEPHENS JR.  
 AND ASSOCIATES, INC.  
 303 ALLEGHENY AVENUE TOWSON MD. 21204  
 (301) 825-8120



DESIGNED: C.A.H.  
 DRAWN: J.M.B., J.B.  
 CHECKED: P.R.C., T.C.  
 P.N: 05532

BY	NO.	REVISION	DATE

PLAN FOR  
 PROPOSED WATER MAIN  
 CONTRACT NO. 44-1510-D  
 600 SCALE- MAP NO 48 BLOCK NO 20

PROPOSED OFFICE / WAREHOUSE  
 JUNCTION INDUSTRIAL PARK  
 SECTION I, AREA I  
 PARCEL 15-1  
 JUNCTION DRIVE  
 HOWARD CO., MARYLAND  
 ELECTION DISTRICT  
 DATE: AUGUST 18, 1986

SCALE: AS SHOWN  
 SHEET NO. 1 OF 2

