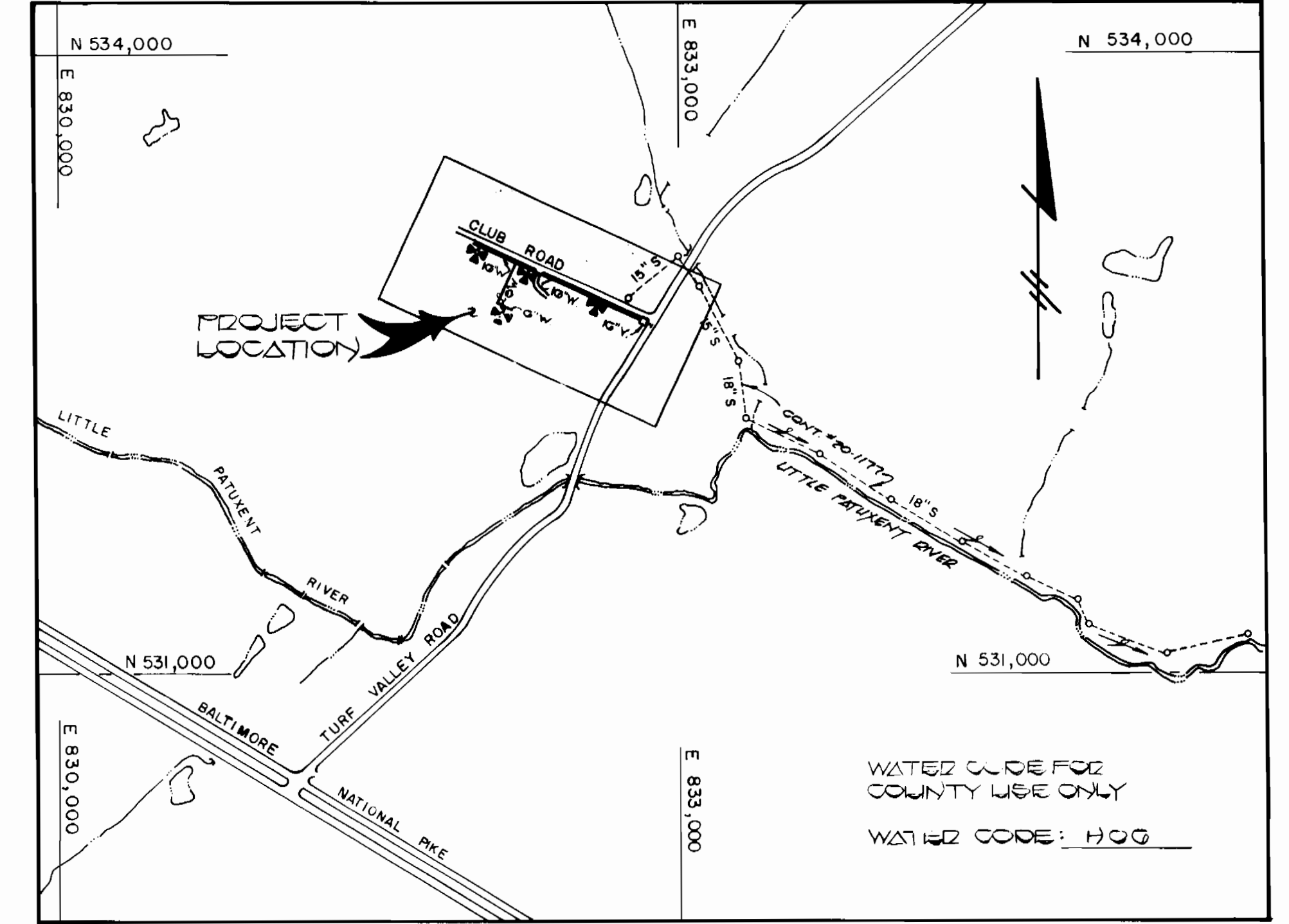
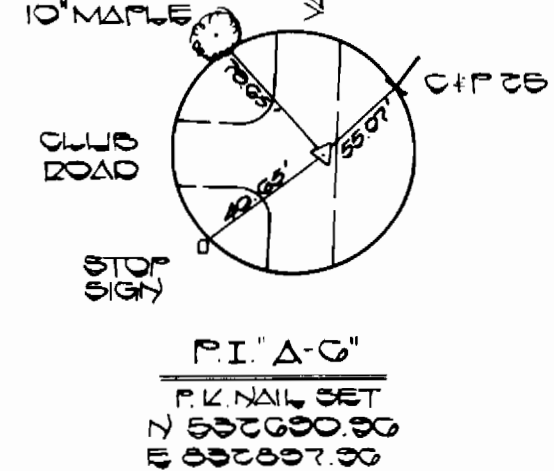
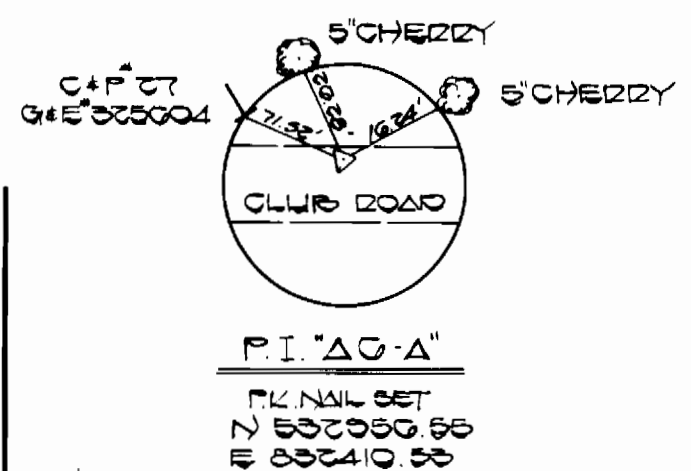
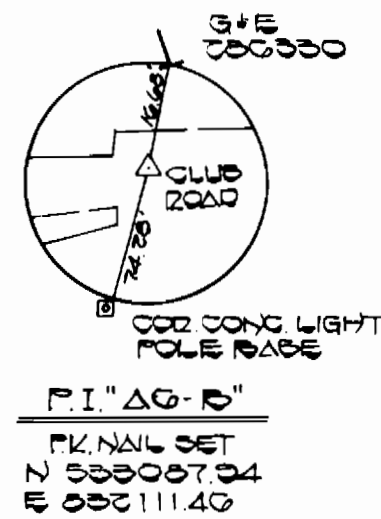


BENCH MARKS

BM #1 ELEV 433.00
 12" DIAM SET IN C/P POLE #07
 75' NORTHWEST OF PI #0-A
 BM #2 ELEV 418.75
 12" DIAM SET IN G.I.P. POLE #000000



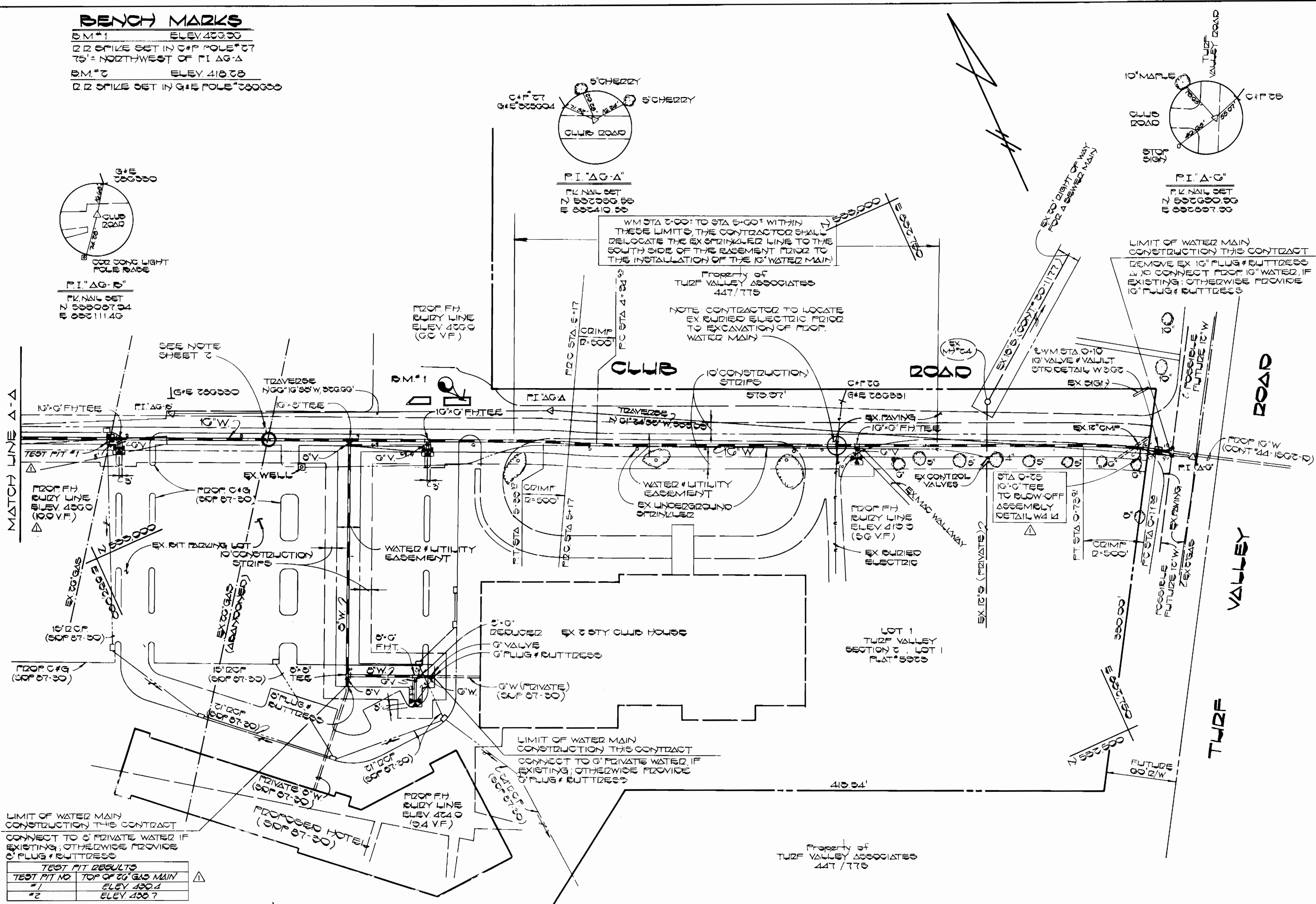
TYPE OF BUILDINGS: COMMERCIAL
 NUMBER OF PARCELS: 1
 NO. OF WATER HOUSE CONNECTIONS: 7
 DRAINAGE AREA: LITTLE PATUXENT

VICINITY MAP
 SCALE: 1" = 600'

GENERAL NOTES

- APPROXIMATE LOCATION OF EXISTING MAINS ARE SHOWN. THE CONTRACTOR SHALL TAKE ALL NECESSARY PRECAUTIONS TO PROTECT EXISTING MAINS AND SERVICES AND MAINTAIN UNINTERRUPTED SUPPLY. ANY DAMAGE INCURRED SHALL BE REPAIRED IMMEDIATELY TO THE SATISFACTION OF THE ENGINEER AT THE CONTRACTOR'S EXPENSE.
- ALL HORIZONTAL CONTROLS ARE BASED ON MARYLAND STATE COORDINATES.
- ALL VERTICAL CONTROLS ARE BASED ON U.S.G.S. DATUM.
- ALL PIPE ELEVATIONS SHOWN ARE INVERT ELEVATIONS.
- CLEAR ALL UTILITIES BY A MINIMUM OF 6".
- FOR DETAILS NOT SHOWN ON THE DRAWINGS, AND FOR MATERIALS AND CONSTRUCTION METHODS, USE HOWARD COUNTY DESIGN MANUAL, VOLUME IV, STANDARD SPECIFICATIONS AND DETAILS FOR CONSTRUCTION. THE CONTRACTOR SHALL HAVE A COPY OF VOLUME IV ON THE JOB.
- WHERE TEST PITS HAVE BEEN MADE ON EXISTING UTILITIES, THEY ARE NOTED BY THE SYMBOL [] AT THE LOCATION OF THE TEST PIT. A NOTE OR NOTES CONTAINING THE RESULTS OF THE TEST PIT OR PITS IS INCLUDED ON THE DRAWINGS. EXISTING UTILITIES IN THE VICINITY OF THE PROPOSED WORK FOR WHICH TEST PITS HAVE NOT BEEN DUG SHALL BE LOCATED BY THE CONTRACTOR WEEK IN ADVANCE OF CONSTRUCTION OPERATIONS AT HIS OWN EXPENSE.
- CONTRACTOR SHALL NOTIFY THE FOLLOWING UTILITIES OR AGENCIES AT LEAST FIVE WORKING DAYS BEFORE STARTING WORK SHOWN ON THESE PLANS:

STATE HIGHWAY ADMINISTRATION	531-5533
BALTIMORE GAS & ELECTRIC CO.	CONTRACTOR SERVICES 561-2585
BALTIMORE GAS & ELECTRIC CO.	UNDER GROUND DAMAGE CONTROL 234-5621
BALTIMORE GAS & ELECTRIC CO.	TROUBLE SHOOTING 298-9013
MISS UTILITY	1-559-0100
COLONIAL PIPELINE CO.	735-1390
BUREAU OF UTILITIES, HOWARD COUNTY DEPARTMENT OF PUBLIC WORKS	992-2366
CHESAPEAKE & POTOMAC (C&P) TELEPHONE COMPANY	725-9976
- TREES AND SHRUBS ARE TO BE PROTECTED FROM DAMAGE TO MAXIMUM EXTENT. TREES AND SHRUBS LOCATED WITHIN THE CONSTRUCTION STRIP ARE NOT TO BE REMOVED OR DAMAGED BY THE CONTRACTOR. CONTRACTOR SHALL REMOVE TREES, STUMPS AND ROOTS ALONG THE LINE OF EXCAVATION. PAYMENT FOR SUCH REMOVAL SHALL BE INCLUDED IN THE UNIT PRICE BID FOR CONSTRUCTION OF THE MAIN.
- ALL WATER MAINS TO BE D.I.P. CLASS 52, UNLESS OTHERWISE NOTED.
- TOPS OF ALL WATER MAINS TO HAVE A MINIMUM OF 3-1/2" COVER UNLESS OTHERWISE NOTED.
- VALVES ADJACENT TO TREES SHALL BE STRAPPED TO TREES.
- ALL FITTINGS SHALL BE BUTTRESSED OR ANCHORED WITH CONCRETE IN ACCORDANCE WITH THE STANDARD DETAILS UNLESS OTHERWISE PROVIDED FOR ON THE DRAWINGS.
- FIRE HYDRANTS SHALL BE SET TO THE BURY LINE ELEVATIONS SHOWN ON THE DRAWINGS. ALL FIRE HYDRANTS SHALL BE STRAPPED AND BUTTRESSED WITH CONCRETE IN ACCORDANCE WITH STANDARD DETAILS. SOIL AROUND THE FIRE HYDRANT SHALL BE COMPACTED IN ACCORDANCE WITH SECTION 1003 OF THE STANDARD SPECIFICATIONS.
- THE CONTRACTOR SHALL NOT OPERATE ANY WATER MAIN VALVES ON THE EXISTING WATER SYSTEM.



TEST PIT RESULTS

TEST PIT NO.	TOP OF 20" GAS MAIN
#1	ELEV 430.4
#2	ELEV 430.7

PLAN
 1" = 50'

QUANTITIES

ITEM	EST'D	AS-BUILT	SUPPLIED
10" WATER	1080 LF	1080	A+P
8" WATER	274 LF	274	"
6" WATER	60 LF	60	"
FIRE HYD	4 EA	4	Belair Rd. Supply Co. Inc.
10" VALVE VAULT	1 EA	1	B.C. Miller Valve Works
BLOW OFF ASSEMBLY	1 EA	1	Belair Rd. Supply Co. Inc.

REVIEWED FOR HOWARD COUNTY SOIL CONSERVATION DISTRICT AND MEETS TECHNICAL REQUIREMENTS APPROVED:
James McArthur 10/23/86
 U.S. SOIL CONSERVATION SERVICE DATE

SEDIMENT CONTROL MEASURES FOR THIS CONTRACT WILL BE IMPLEMENTED IN ACCORDANCE WITH SECTION 15 OF THE HOWARD COUNTY DESIGN MANUAL STANDARDS & SPECIFICATIONS FOR SOIL EROSION AND SEDIMENT CONTROL IN DEVELOPING AREAS. (SEE SOP 57-50)
 THIS PLAN IS APPROVED FOR EROSION AND SEDIMENT CONTROL BY THE HOWARD COUNTY SOIL CONSERVATION DISTRICT APPROVED:
Stephen L. Fisher 10/23/86
 HOWARD COUNTY SOIL CONSERVATION DISTRICT DATE

DEPARTMENT OF PUBLIC WORKS
 HOWARD COUNTY, MARYLAND

John C. Neuman 10-11-86
 DIRECTOR OF PUBLIC WORKS DATE

Robert R. Bainger 10-29-86
 CHIEF, BUREAU OF UTILITIES DATE

William E. Brown 10-29-86
 CHIEF, BUREAU OF ENGINEERING DATE

William E. Brown 10-29-86
 CHIEF, LAND DEVELOPMENT DIVISION DATE

FISHER, COLLINS AND CARTER, INC.
 CONSULTING ENGINEERS AND LAND SURVEYORS

8388 COURT AVENUE
 ELLICOTT CITY, MARYLAND 21043

Terrell A. Fisher
 TERRELL A. FISHER DATE

DES: 000
 DRN: 000
 CHK: T & F
 DATE: 9/29/86

BY: NO. REVISION DATE

AS-BUILT PLAN
 WATER MAIN EXTENSIONS

600 SCALE MAP NO. 16 BLOCK NO. 17

TURF VALLEY
 SECTION 2, LOT 1, PLAT 5923
 CONTRACT NO. 44-1563-D
 THIRD ELECTION DISTRICT
 HOWARD COUNTY, MARYLAND

SCALE AS SHOWN
 SHEET 1 OF 2

