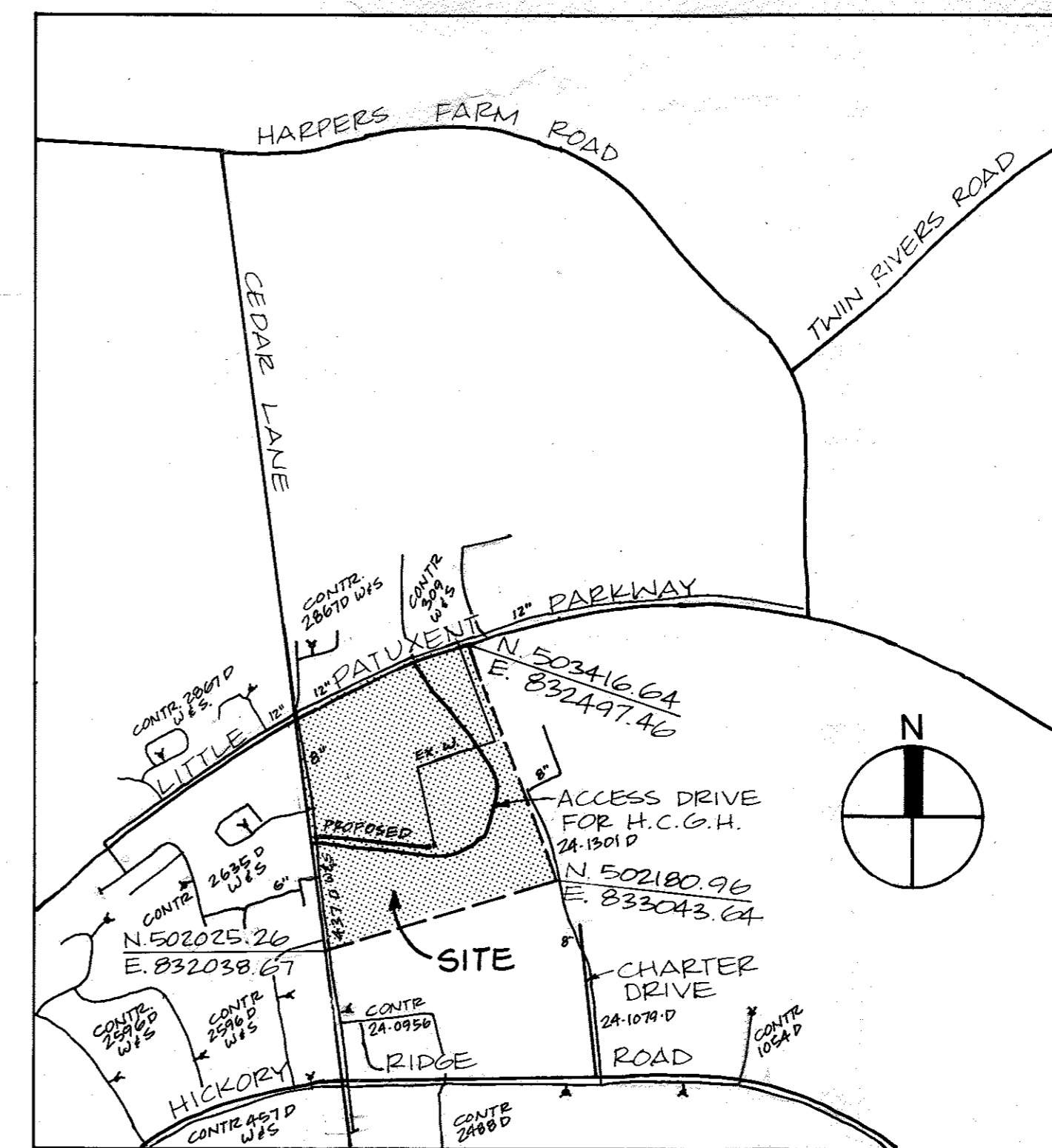


Howard County General Hospital

Watermain Extension

Howard County, Maryland



WATER CODE: I07
SEWER CODE: 5522500

Vicinity Map

SCALE 1" = 600'

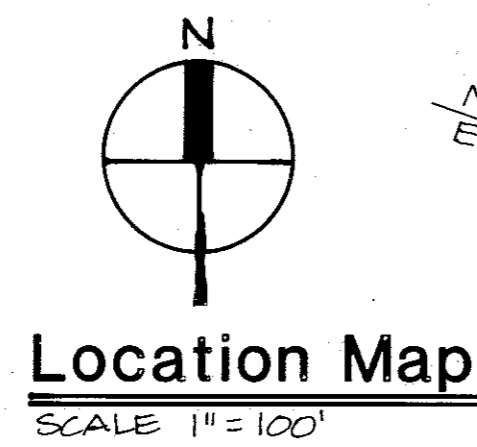
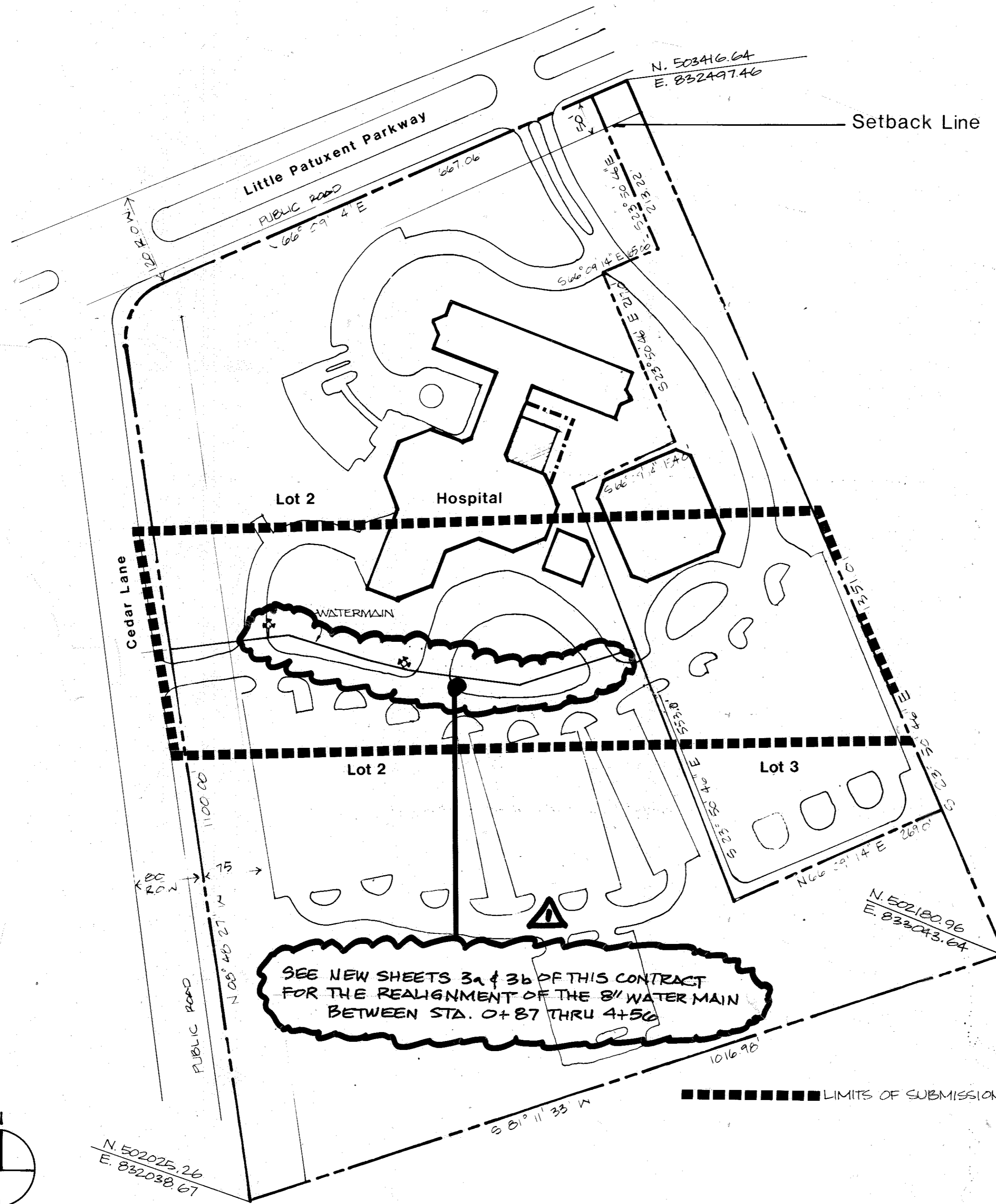
General Notes

- PART I
- APPROXIMATE LOCATION OF EXISTING MAINS ARE SHOWN. THE CONTRACTOR SHALL TAKE ALL NECESSARY PRECAUTIONS TO PROTECT EXISTING MAINS AND SERVICES AND MAINTAIN UNINTERRUPTED SUPPLY. ANY DAMAGE INCURRED SHALL BE REPAIRED IMMEDIATELY TO THE SATISFACTION OF THE ENGINEER, AT THE CONTRACTOR'S EXPENSE.
 - ALL HORIZONTAL CONTROLS ARE BASED ON MARYLAND STATE COORDINATES.
 - ALL VERTICAL CONTROLS ARE BASED ON U.S.G.S. DATUM.
 - ALL PIPE ELEVATIONS SHOWN ARE INVERT ELEVATIONS.
 - CLEAR ALL UTILITIES BY A MINIMUM OF 6". CLEAR ALL POLES BY 2'-0" MINIMUM OR TUNNEL AS REQUIRED. ANY COST INCURRED TO THE CONTRACTOR FOR TUNNELING OR BRACING AT POLES SHALL BE INCLUDED IN UNIT PRICES BID FOR CONSTRUCTION OF THE MAIN.
 - FOR DETAILS NOT SHOWN ON THE DRAWINGS USE HOWARD COUNTY STANDARD DETAILS.
 - FOR MATERIALS AND CONSTRUCTION METHODS USE HOWARD COUNTY STANDARD SPECIFICATIONS.
 - CONTRACTOR SHALL LOCATE EXISTING UTILITIES A MINIMUM OF TWO (2) WEEKS IN ADVANCE OF CONSTRUCTION OPERATIONS IN THE VICINITY OF PROPOSED UTILITIES AT HIS OWN EXPENSE.
 - CONTRACTOR SHALL NOTIFY THE FOLLOWING UTILITIES OR AGENCIES AT LEAST FIVE (5) WORKING DAYS BEFORE STARTING WORK SHOWN ON THESE PLANS:
 - STATE HIGHWAY ADMINISTRATION - 531-5533
 - BALTIMORE GAS & ELECTRIC COMPANY - UNDERGROUND ELECTRIC DISTRIBUTION SERVICE - 685-0123
 - BALTIMORE GAS & ELECTRIC COMPANY - UNDERGROUND GAS DISTRIBUTION CUSTOMER SERVICE - 685-0123
 - ENGINEERING - "DAMAGE CONTROL" - 234-5621
 - "MESS UTILITY" - 1-559-0100
 - CHESAPEAKE & POTOMAC (C&P) TELEPHONE COMPANY - 725-9976
 - AMERICAN TELEPHONE AND TELEGRAPH - CABLE LOCATION DIVISION - 393-3553
 - COLONIAL PIPELINE COMPANY - 795-1390
 - BUREAU OF UTILITIES HOWARD COUNTY - 992-2366
 - TREES ARE TO BE PROTECTED FROM DAMAGE TO MAXIMUM EXTENT. TREES LOCATED WITHIN THE CONSTRUCTION STRIP ARE NOT TO BE REMOVED OR DAMAGED BY THE CONTRACTOR.
- PART II
- ALL WATER MAINS TO BE DUCTILE IRON UNLESS OTHERWISE NOTED.
 - TOP OF ALL WATER MAINS TO HAVE A MINIMUM OF 3'-1/2' COVER UNLESS OTHERWISE NOTED.
 - VALVES ADJACENT TO TEES SHALL BE STRAPPED TO TEES.
 - BLOCK ALL FITTINGS WITH CONCRETE.
 - BURY LINE ELEVATIONS ON FIRE HYDRANTS SHALL BE SET TO THE ELEVATIONS SHOWN ON THE DRAWINGS. ALL FIRE HYDRANTS SHALL BE STRAPPED AND BUTTRESSED WITH CONCRETE IN ACCORDANCE WITH STANDARD DETAILS. SOIL AROUND THE FIRE HYDRANT TO BE COMPACTED IN ACCORDANCE WITH SECTIONS 10.03 AND 10.08 OF THE HOWARD COUNTY STANDARD SPECIFICATIONS.
 - THE CONTRACTOR SHALL NOT OPERATE ANY WATER MAIN VALVES ON THE EXISTING SYSTEM.

Sheet Index

SHEET NO.	SHEET DESCRIPTION
1	TITLE SHEET
2	WATERMAIN PLAN & PROFILE
3a.	REALIGNMENT COVER SHEET
3b.	REALIGNMENT PLAN & PROFILE
AS-BUILT	G. WALLACE 5/5/89

REVISIONS MADE AFTER 3-1-07
BY JOYCE ENGINEERING CORP.



QUANTITIES				
ITEM	QUANTITY	UNIT	BID QUANTITY	MATERIAL SUPPLIER
6" WATER	15	L.F.	15 L.F.	
8" WATER	638	L.F.	638 L.F.	
FIRE HYDRANT	2	EA.	2 EA.	
8" VALVE	1	EA.	1 EA.	
6" VALVE	2	EA.	2 EA.	
8" x 8" TAPPING SLEEVE, VALVE AND BOX	1	EA.	1 EA.	

FOR REALIGNMENT QUANTITIES SEE NEW SHEET 3a.

SEE NEW SHEETS 3a & 3b OF THIS CONTRACT FOR THE REALIGNMENT OF THE 8" WATER MAIN BETWEEN STA. 0+87 THRU 4+50

SEDIMENT CONTROL MEASURES FOR THIS CONTRACT WILL BE IMPLEMENTED IN ACCORDANCE WITH SECTION 15 OF THE HOWARD COUNTY DESIGN MANUAL STANDARDS AND SPECIFICATIONS FOR SOIL EROSION AND SEDIMENT CONTROL IN DEVELOPING AREAS. (SEE SOP-26-269)

THIS PLAN IS APPROVED FOR EROSION AND SEDIMENT CONTROL BY THE HOWARD COUNTY CONSERVATION DISTRICT.
APPROVED: *Stephen L. Fisher* 11/12/86
HOWARD CO. SOIL CONSERVATION DISTRICT DATE

Reviewed for HOWARD COUNTY, S.C.D. and meets Technical Requirements. Date 11-22-86
Signature: *David C. Roe*
Soil Conservation Service

DEPARTMENT OF PUBLIC WORKS
HOWARD COUNTY, MARYLAND
Director of Public Works DATE 11-12-86
CHIEF, BUREAU OF UTILITIES DATE 11-12-86

HANSEN LIND MEYER, INC.
DRAWER 310 PLAZA CENTRE ONE
IOWA CITY, IOWA 52244

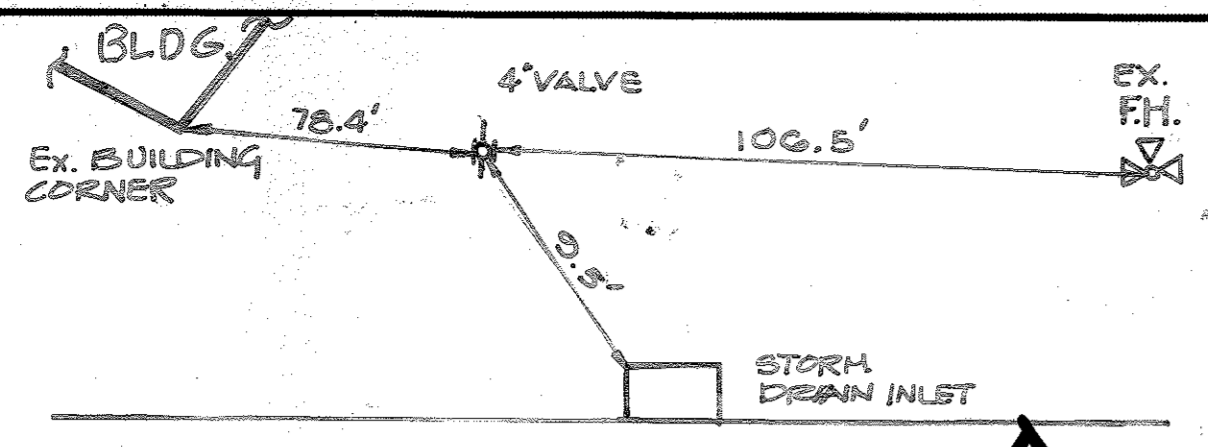
DAVID C. ROE

DES: DAS
DRN: TJL
CHK: DCR
DATE: 11-22-86

TITLE SHEET

HOWARD COUNTY GENERAL HOSPITAL
WATERMAIN EXTENSION
CONTRACT NO: 44-1558-D
5th ELECTION DISTRICT
HOWARD COUNTY, MARYLAND

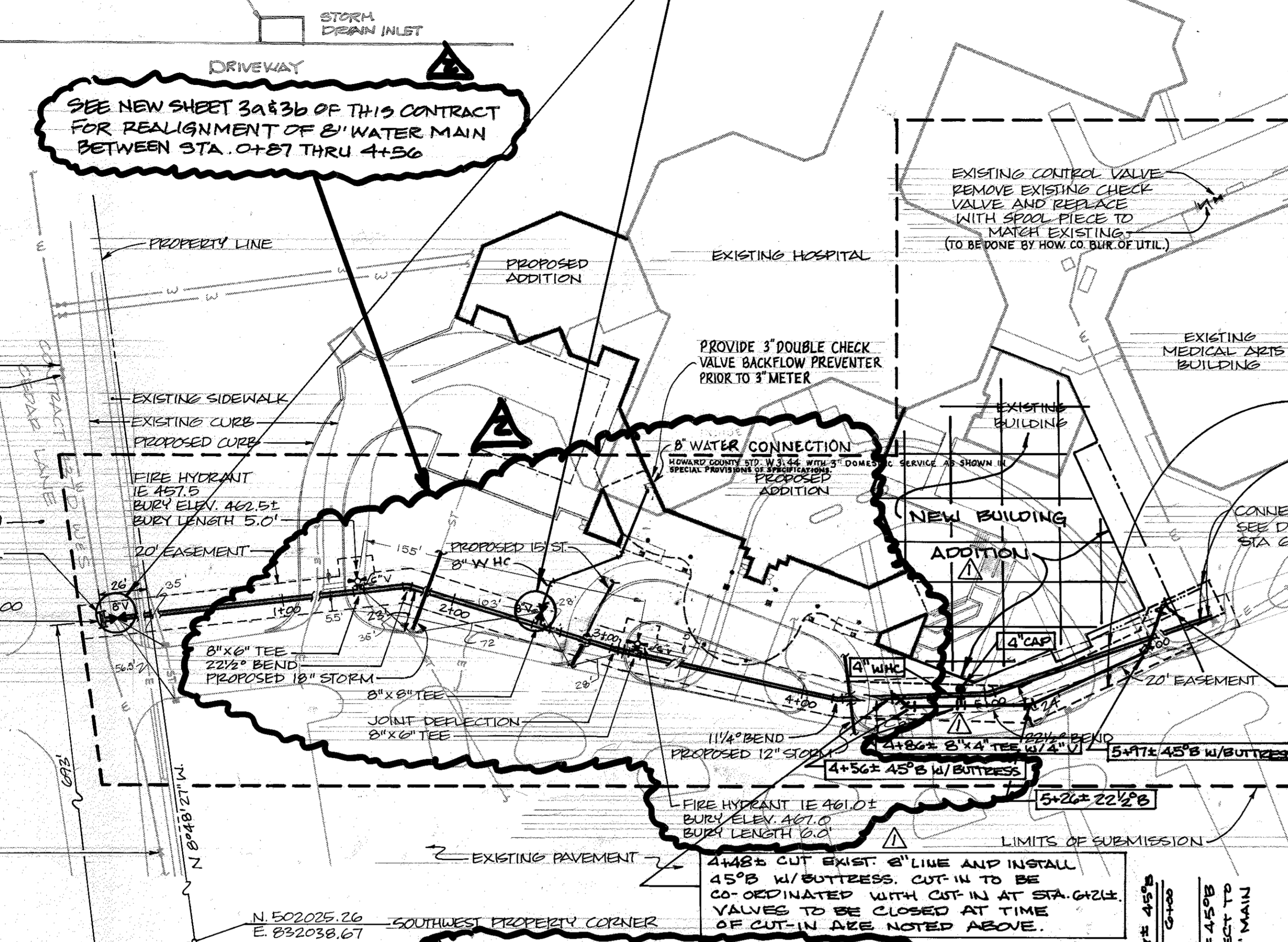
SCALE AS SHOWN
SHEET 1 of 2



SEE NEW SHEET 3a & 3b OF THIS CONTRACT FOR REALIGNMENT OF 8" WATER MAIN BETWEEN STA. 0+87 THRU 4+56

VALVES TO BE CLOSED DURING CONNECTIONS

EXISTING WATERMAIN PART OF HOWARD COUNTY CONTRACT 437 D W&S
 EXISTING CONTROL VALVE
 COORDINATE TAPPING OF WATER MAIN WITH HOWARD COUNTY UTILITIES DEPARTMENT. CONTRACTOR RESPONSIBLE FOR ALL PERMIT AND TAPPING FEES.
 CEDAR LANE (BITUMINOUS PAVING)
 8" X 8" TAPPING SLEEVE, VALVE & BOX
 WATERMAIN TAPPING LOCATION N 502106 E 831908 = STA 0+00 (MARYLAND STATE COORDINATES)
 REMOVE AND REPLACE PAVEMENT AS REQUIRED. MATCH EXISTING CONDITIONS.



EXISTING PRIVATE WATERMAIN TO BE CONVERTED TO PUBLIC MAIN UPON CONNECTION TO PROPOSED MAIN.

EXISTING WATERMAIN (PRIVATE)

EXISTING WATERMAIN (PUBLIC)

RELOCATED 20" WIDE UTILITY ESMT. (L 3905/F48)
 ORIGINAL ESMT. (PLAT 44-1558-0-W-1)

CONNECT TO EXISTING MAIN SEE DETAIL 2/2 OF 2 STA. 6+38

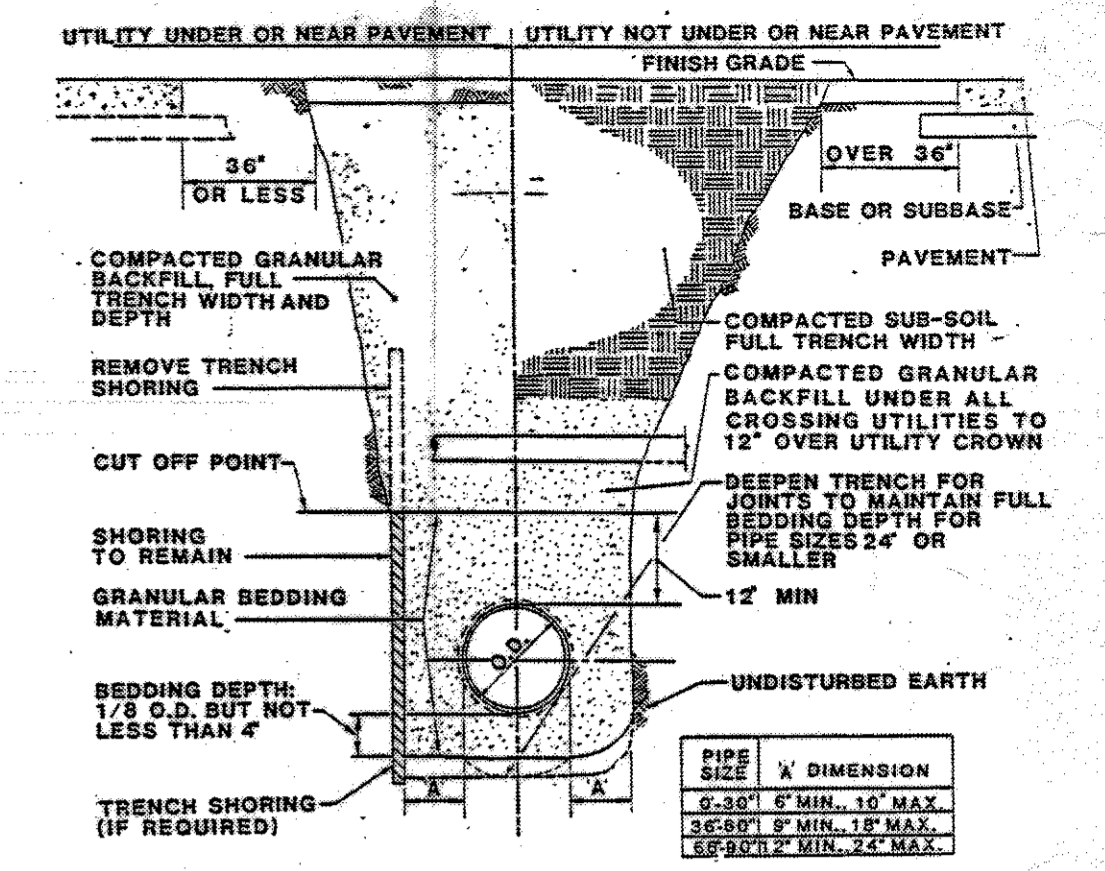
4+21± CUT EXIST 8" LINE AND INSTALL 4.5" W/ BUTTRESS AT PROPERTY LINE CUT-IN TO BE CO-0 EXPLAINED WITH CUT-IN AT STA. 4+48±. USE HYDRANT AT THIS LOCATION FOR FINAL FLUSHING. (ADDITIONAL EASEMENT REQUIRED)

4+48± CUT EXIST 8" LINE AND INSTALL 4.5" W/ BUTTRESS. CUT-IN TO BE CO-0 EXPLAINED WITH CUT-IN AT STA. 4+21±. VALVES TO BE CLOSED AT TIME OF CUT-IN ARE NOTED ABOVE.

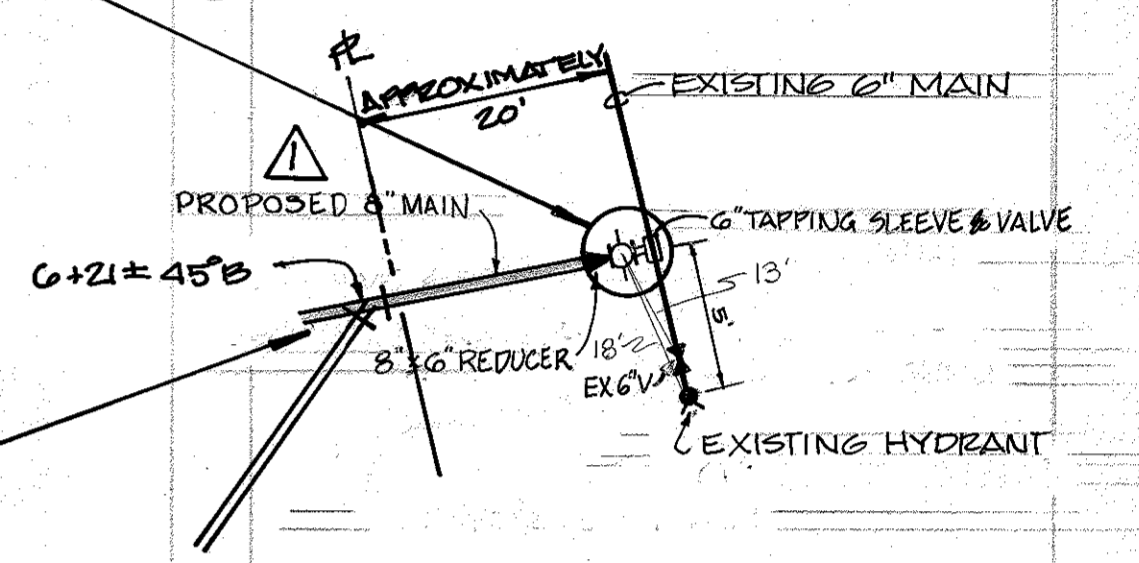
SEE NEW SHEET 3a & 3b OF THIS CONTRACT FOR REALIGNMENT OF 8" WATER MAIN BETWEEN STA. 0+87 THRU 4+56

SEQUENCE OF CONSTRUCTION

1. INSTALL THE NEW 8" WATER MAIN (TO BE RELOCATED) FIRST AS PER THE APPROVED PLAN AND PROFILE.
2. ONE DAY TO CHLORINATE AND PRESSURE TEST.
3. THREE DAY TIME TO FLUSH AND PERFORM BACTERIOLOGICAL TEST.
4. AFTER COMPLETION OF TESTS, SHUT DOWN EXIST. MAIN AND MAKE TWO CONNECTIONS.
5. AT TIME OF CONNECTION, CLOSE VALVES AT CEDAR LANE, HOSPITAL AND DOWNSTREAM CONNECTION. NOTIFY HOSPITAL AND OTHER AFFECTED FACILITIES 72 HOURS PRIOR TO CONNECTIONS.

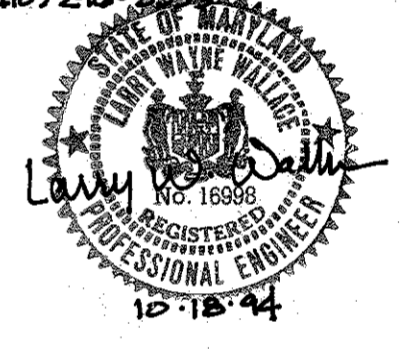


UTILITY BEDDING & TRENCH BACKFILL



CONNECTION TO EXISTING MAIN

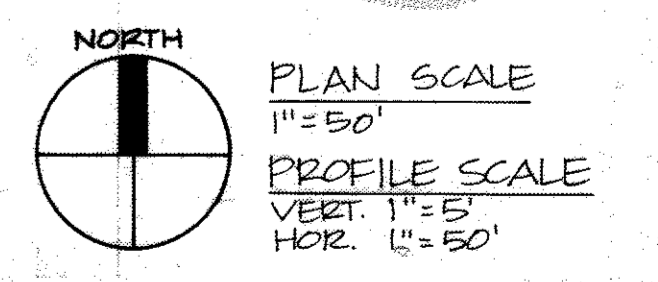
DRPT McCONE WALKER, INC.
 200 E. PENNSYLVANIA AVE.
 TOWSON, MARYLAND 21286
 (410) 294-3888



LEGEND

PROPOSED	ITEM	EXISTING
---	LIMITS OF SUBMISSION	---
---	WATERMAIN	---
---	STORM SEWER	---
+	FIRE HYDRANT	+
+	CURB INLET	+
+	ELECTRIC	+
+	VALVE & BOX	+
+	PLUG & BUTTRESS	+
+	BEND	+
+	TEE	+
---	PROPERTY LINE	---
---	PUBLIC EASEMENT	---

REVISIONS MADE AFTER 3-1-07 BY JOYCE ENGINEERING CORP.



STATION	DESCRIPTION	ELEVATION
0+00	8" X 8" TAPPING SLEEVE VALVE & BOX (N 502697 E 831917)	454.31
0+22	EXISTING ELECTRIC	455.39
0+50		
1+00		
1+20	EXISTING ELECTRIC	456.48
1+45	8" X 6" TEE-FIRE HYDRANT	457.46
1+50		457.57
1+72	22 1/2" BEND	458.05
1+85	PROPOSED 18" STORM DRAIN INV. EL. 446.6	458.66
2+00		
2+50	DOMESTIC SERVICE	459.78
2+65	PROPOSED 15" RCP INV. 445	459.98
2+90	JOINT DEFLECTION	460.62
3+00		460.84
3+10	8" X 6" TEE-FIRE HYDRANT	461.05
3+20	EXISTING ELECTRIC	461.93
3+50		462.47
3+75	11 1/4" VERTICAL BEND	462.92
4+00		461.00
4+15	11 1/4" BEND	461.00
4+21	4+21± CUT EXIST 8" LINE AND INSTALL 4.5" W/ BUTTRESS	461.00
4+22	NEW PROPOSED GRADE	461.00
4+25	4+25± 4.5" B	461.00
4+30	4+30± 4.5" B	461.00
4+35	4+35± 4.5" B	461.00
4+40	4+40± 4.5" B	461.00
4+45	4+45± 4.5" B	461.00
4+50	4+50± 4.5" B	461.00
4+55	4+55± 4.5" B	461.00
5+00		
5+50		
6+00		
6+05	6+05± 4.5" B	461.00
6+10	6+10± 4.5" B	461.00
6+15	6+15± 4.5" B	461.00
6+20	6+20± 4.5" B	461.00
6+25	6+25± 4.5" B	461.00
6+30	6+30± 4.5" B	461.00
6+35	6+35± 4.5" B	461.00
6+40	6+40± 4.5" B	461.00
6+45	6+45± 4.5" B	461.00
6+50	6+50± 4.5" B	461.00

375'-8" WATER @ 2.18% = 8.17' 263'-8" WATER @ 2.18% = 5.75'

SEE NOTE ABOVE

AS-BUILT G. WALLACE 5/5/89

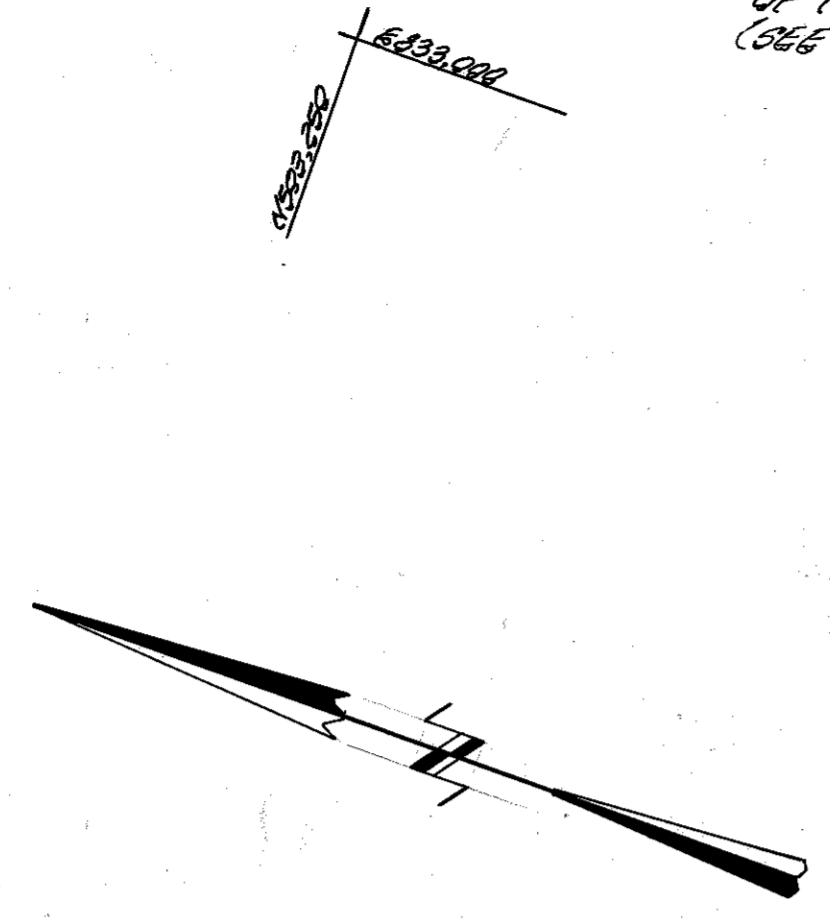
DEPARTMENT OF PUBLIC WORKS HOWARD COUNTY, MARYLAND Director of Public Works: <i>James J. Lowe</i> DATE: 11-12-86 Chief, Bureau of Utilities: <i>Rodney Bennett</i> DATE: 11-12-86		HANSEN LIND MEYER, INC. DRAWER 310 PLAZA CENTRE ONE IOWA CITY, IOWA 52244 Chief, Land Development Division: <i>Richard E. Riley</i> DATE: 11-12-86		DES: DAS DRN: TRH CHK: DCR DATE: 11-4-86		REVISIONS: 1. ADDED SHEETS 3a & 3b FOR 8" WATER REALIGNMENT 3-1-87 2. REV. WATER MAIN LOCATION FOR NEW BUILDING 10-18-86 3. STATE WATER PERMIT 2-11-87 4. SUBMISSION TO HOWARD COUNTY 11-4-86 5. SUBMISSION TO HOWARD COUNTY 10-24-86		WATERMAIN PLAN AND PROFILE 600' SCALE MAP NO. _____ BLOCK NO. _____		HOWARD COUNTY GENERAL HOSPITAL WATERMAIN EXTENSION CONTRACT NO: 44-1558-D 5th ELECTION DISTRICT HOWARD COUNTY, MARYLAND		SCALE AS SHOWN SHEET 2 OF 2
---	--	--	--	---	--	--	--	---	--	--	--	--------------------------------

AS-BUILT

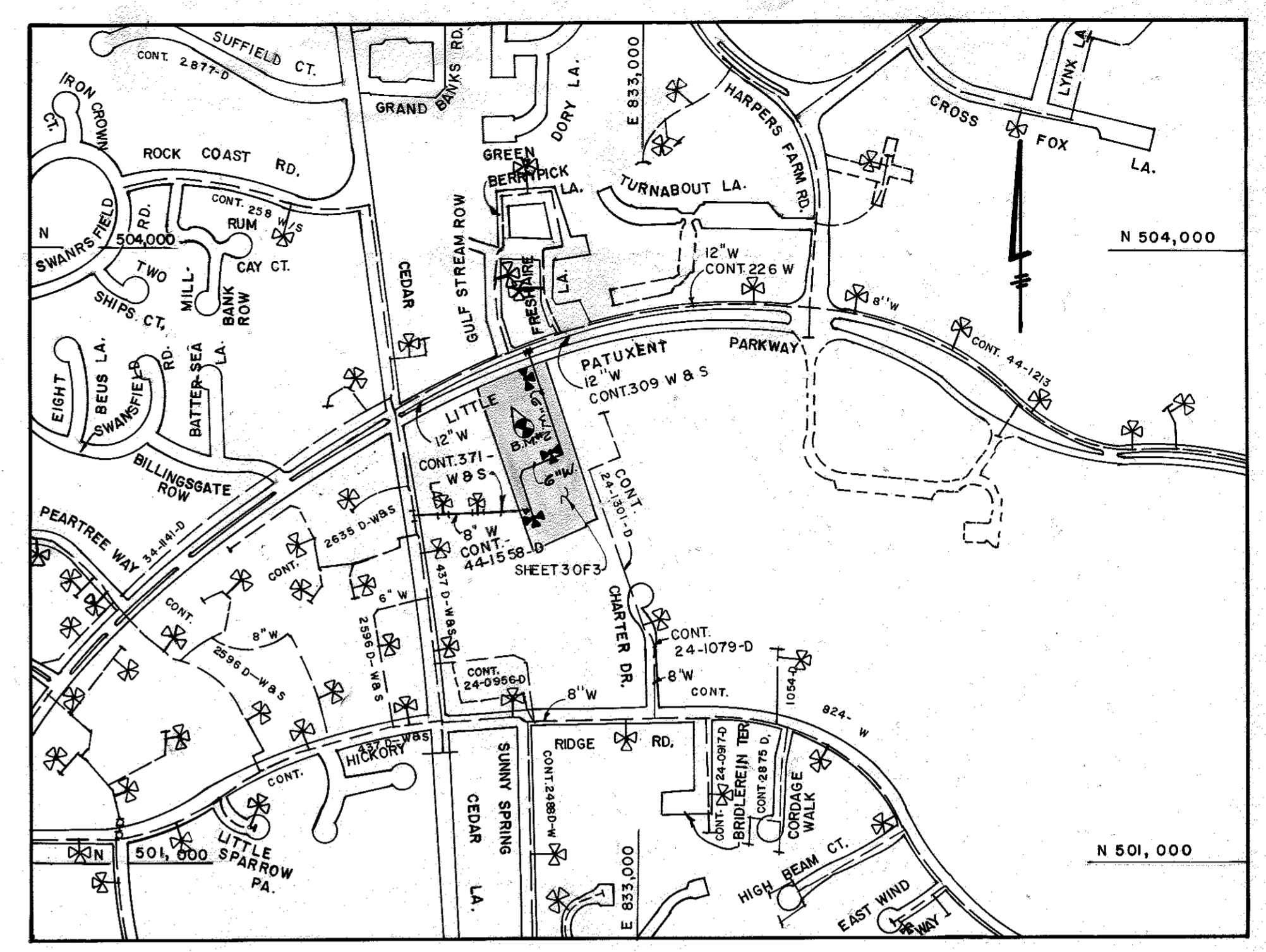
BENCH MARKS

B.M.#1 ELEV. 474.72
EX WALL FOUND IN THE
DISCONTINUOUS CONCRETE PAVEMENT
DRIVEWAY ENTRANCE. (SEE PLAN)

B.M.#2 ELEV. 472.44
EX WALL FOUND IN THE DISCONTINUOUS
CONCRETE PAVEMENT OF THE
DOCTOR'S PARKING LOT WEST
OF THE MAIN BUILDING.
(SEE VICINITY MAP)



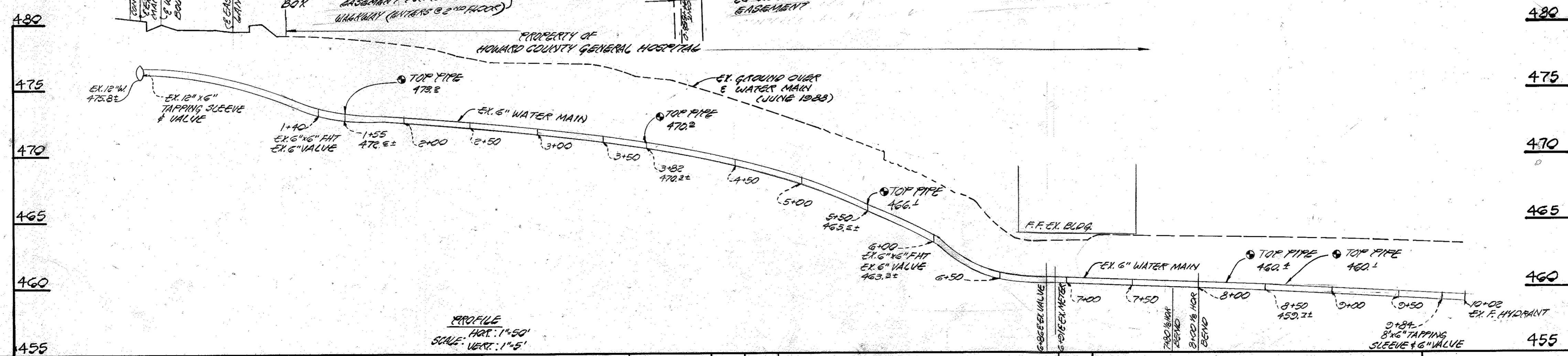
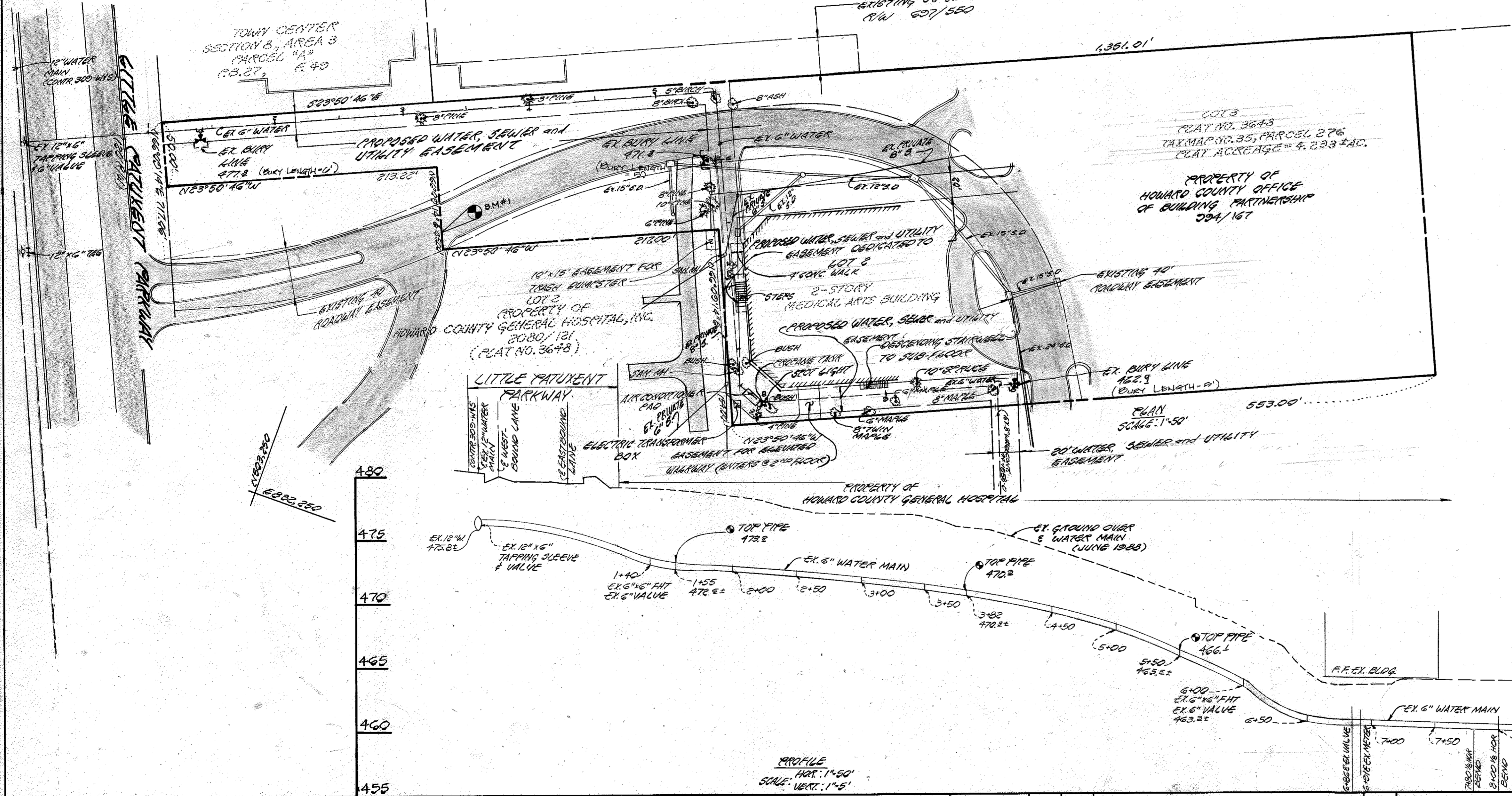
PARCEL G-1
COLUMBIA TOWN CENTER
SECTION 8, AREA 4
PLAT NO. 6074



VICINITY MAP
SCALE: 1" = 600'

NOTE: PROPOSED WATER, SEWER AND UTILITY
EASEMENTS WILL BE DEEDDED TO
HOWARD COUNTY, MARYLAND BY
PLAT NO. 14-1558 D-W-2 AND 14-1558 D-W-3.

QUANTITIES			
ITEM	ESTD	AS-BUILT	SUPPLIER
6 WATER	1002.41'	1002.41'	3 EA.
6 SEWER	354'	354'	3 EA.



REVISIONS MADE AFTER 3-1-87
BY JOYCE ENGINEERING CORP.



CONTRACT NO. 44-1558-D
AS-BUILT
HOWARD COUNTY GENERAL HOSPITAL
WATER MAIN EXTENSIONS
HOWARD COUNTY, MARYLAND

DEPARTMENT OF PUBLIC WORKS
HOWARD COUNTY, MARYLAND

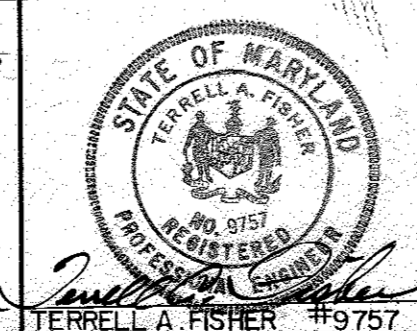
James P. Shaw
DIRECTOR OF PUBLIC WORKS
DATE: 3/13/89

Robert W. Bevington
CHIEF BUREAU OF UTILITIES
DATE: 3-9-89

James E. Kelly
CHIEF BUREAU OF ENGINEERING
DATE: 3/13/89

Terrell A. Fisher
CHIEF, LAND DEVELOPMENT DIVISION
DATE: 3/10/89

FISHER, COLLINS, AND CARTER, INC.
CONSULTING ENGINEERS AND LAND SURVEYORS
8388 COURT AVENUE
ELLCOTT CITY, MARYLAND 21043



DES: ---					
DRN: D.A.N.					
CHK: T.A.F.					
DATE: 8/1/88					
BY: NO.					
REVISION: ADDED SHEETS 2nd & 3rd FOR THE WATER MAIN 3-1-89					

VICINITY MAP
PLAN AND PROFILE
WATER MAIN EXTENSION

600' SCALE MAP NO. 35 BLOCK NO. 5

AS-BUILT
WATER MAIN EXTENSION
HOWARD COUNTY GENERAL HOSPITAL
CONTRACT NO. 44-1558-D
FIFTH ELECTION DISTRICT
HOWARD COUNTY, MARYLAND

SCALE AS SHOWN
SHEET 3 OF 3

HOWARD COUNTY GENERAL HOSPITAL PUBLIC WATER MAIN REALIGNMENT HOWARD COUNTY, MARYLAND CONTRACT NO. 44-1558-D

GENERAL NOTES FOR WATER MAIN REALIGNMENT

PART 1

- APPROXIMATE LOCATION OF EXISTING MAINS ARE SHOWN. THE CONTRACTOR SHALL TAKE ALL NECESSARY PRECAUTIONS TO PROTECT EXISTING MAINS AND SERVICES AND MAINTAIN UNINTERRUPTED SUPPLY. ANY DAMAGE INCURRED SHALL BE REPAIRED IMMEDIATELY TO THE SATISFACTION OF THE ENGINEER AT THE CONTRACTOR'S EXPENSE.
- ALL HORIZONTAL CONTROLS ARE BASED ON MARYLAND STATE COORDINATES.
- ALL VERTICAL CONTROLS ARE BASED ON U.S.G.S DATA.
- ALL PIPE ELEVATIONS SHOWN ARE INVERT ELEVATIONS.
- CLEAR ALL UTILITIES BY A MINIMUM OF 6'. CLEAR ALL POLES BY 2'-0" MINIMUM OR TUNNEL AS REQUIRED. THE OWNER HAS CONTRACTED THE UTILITY COMPANIES AND HAS MADE ARRANGEMENTS FOR BRACING OF POLES AS SHOWN ON DRAWINGS. IN THE EVENT THE CONTRACTOR'S WORK REQUIRES THE BRACING OF ADDITIONAL POLES, ANY COST INCURRED BY THE OWNER FOR BRACING OF ADDITIONAL POLES OR DAMAGES SHALL BE DEDUCTED FROM MONEY OWED THE CONTRACTOR. THE CONTRACTOR SHALL COORDINATE WITH THE UTILITY COMPANIES TO SCHEDULE THE BRACING OF THE POLES.

6. FOR DETAILS NOT SHOWN ON THE DRAWINGS, AND FOR MATERIALS AND CONSTRUCTION METHODS USE HOWARD COUNTY DESIGN MANUAL, VOLUME IV, STANDARD SPECIFICATIONS AND DETAILS FOR CONSTRUCTION (LATEST EDITION). THE CONTRACTOR SHALL HAVE A COPY OF VOLUME IV ON THE JOB.

7. WHERE TEST PITS HAVE BEEN MADE ON EXISTING UTILITIES, THEY ARE NOTED BY THE SYMBOL. AT THE LOCATION OF THE TEST PIT, A NOTE OR NOTES CONTAINING THE RESULTS OF THE TEST PIT OR PITS IS INCLUDED ON THE DRAWINGS. EXISTING UTILITIES IN THE VICINITY OF THE PROPOSED WORK FOR WHICH TEST PITS HAVE NOT BEEN DUG SHALL BE LOCATED BY THE CONTRACTOR TWO WEEKS IN ADVANCE OF CONSTRUCTION OPERATIONS AT HIS OWN EXPENSE.

8. THE CONTRACTOR SHALL NOTIFY THE FOLLOWING UTILITY COMPANIES OR AGENCIES AT LEAST FIVE WORKING DAYS BEFORE STARTING WORK SHOWN THESE PLANS:

A.T. & T.	1-800-252-1333
R.G. & E. (CONTRACTOR SERVICES)	410-850-4620
B.G. & E. (UNDER GROUND DAMAGE CONTROL)	410-685-1400
BUREAU OF UTILITIES	410-313-4900
COLONIAL PIPELINE CO.	410-795-1390
MISS UTILITY	1-800-257-7777
STATE HIGHWAY ADMINISTRATION	410-531-5533
VERIZON	1-800-743-0033 / 410-224-9210

9. TREES AND SHRUBS ARE TO BE PROTECTED FROM DAMAGE TO THE MAXIMUM EXTENT. TREES AND SHRUBS LOCATED WITHIN THE CONSTRUCTION STRIP ARE NOT TO BE REMOVED OR DAMAGED BY THE CONTRACTOR HOWARD COUNTY DEPARTMENT OF PUBLIC WORKS

10. THE CONTRACTOR SHALL REMOVE TREES, STUMPS AND ROOTS ALONG LINE OF EXCAVATION. PAYMENT FOR SUCH REMOVAL SHALL BE INCLUDED IN THE UNIT PRICE BID FOR THE CONSTRUCTION OF THE MAIN.

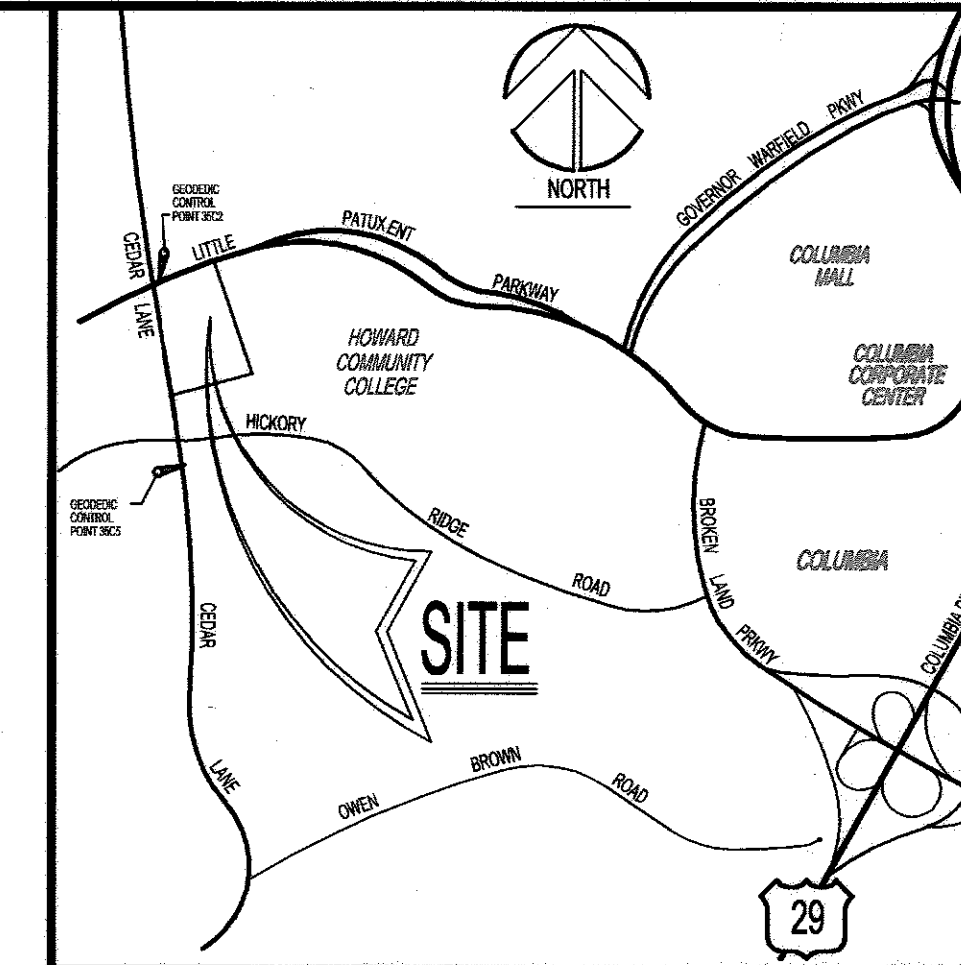
11. THE CONTRACTOR SHALL NOTIFY THE BUREAU OF HIGHWAYS, HOWARD COUNTY, AT (410) 313-7450 AT LEAST FIVE WORKING DAYS BEFORE ANY OPEN CUT OF ANY COUNTY ROAD OR BORROWING OPERATION IN COUNTY ROADS FOR LAYING WATERSEWER MAIN OR HOUSE CONNECTIONS. THE APPROVAL OF THESE DRAWINGS WILL CONSTITUTE COMPLIANCE WITH DPW REQUIREMENTS PER SECTION 18.114(a) OF THE HOWARD COUNTY CODE.

PART 11 - WATER

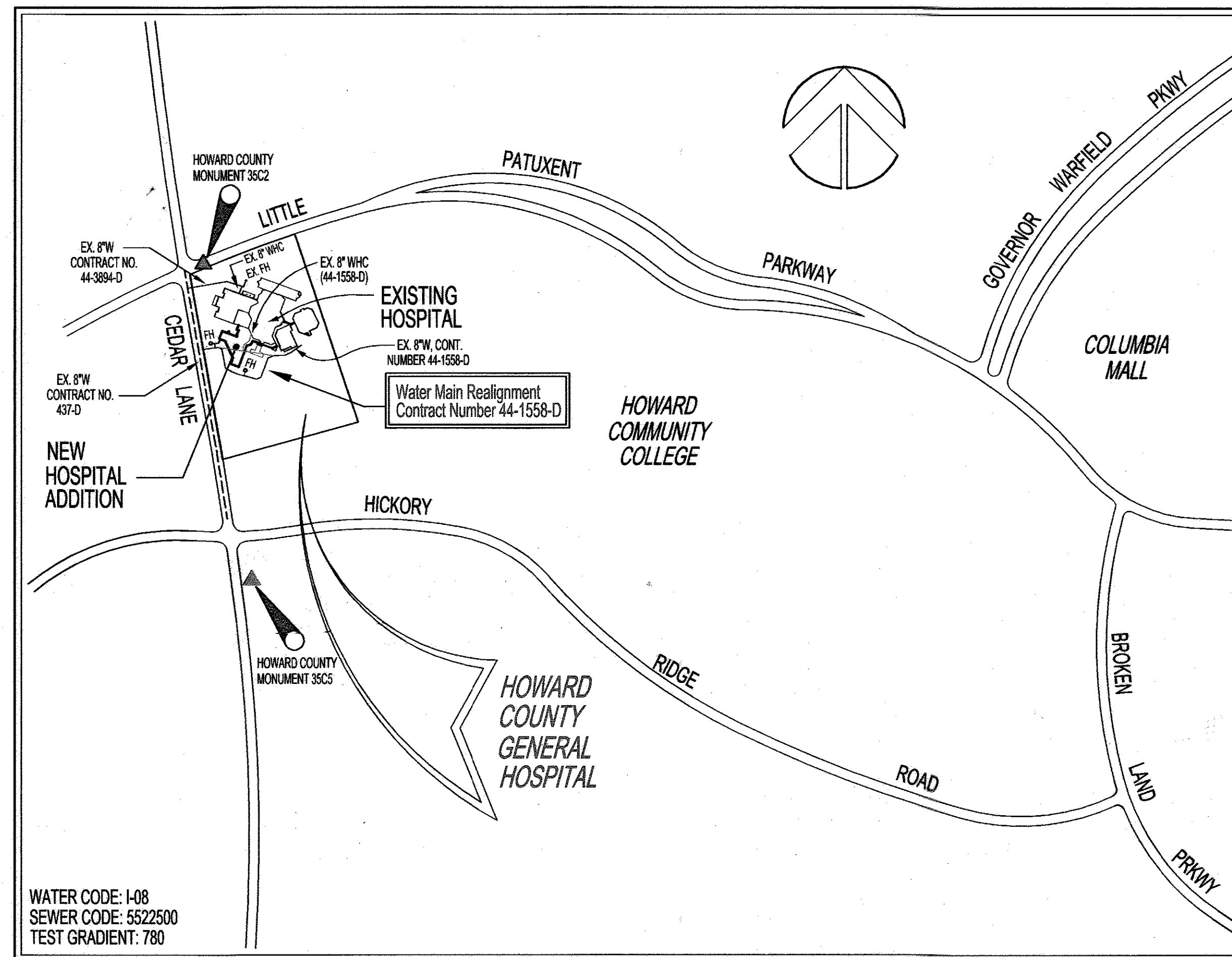
- ALL WATER MAINS TO BE D.I.P. CLASS 52 UNLESS OTHERWISE NOTED.
- TOPS OF ALL WATER MAINS TO HAVE A MINIMUM OF 3'-1/2" COVER UNLESS OTHERWISE NOTED.
- VALVES ADJACENT TO TEES SHALL BE STRAPPED TO TEES.
- ALL FITTINGS SHALL BE BUTTRESSED OR ANCHORED WITH CONCRETE IN ACCORDANCE WITH CONCRETE IN ACCORDANCE WITH THE STANDARD DETAILS UNLESS OTHERWISE PROVIDED FOR ON THE DRAWINGS.
- FIRE HYDRANTS SHALL BE SET TO THE BURY LINE ELEVATIONS SHOWN ON THE DRAWINGS. ALL FIRE HYDRANTS SHALL BE RESTRAINED AND BUTTRESSED WITH CONCRETE IN ACCORDANCE WITH STANDARD DETAILS. SOIL AROUND FIRE HYDRANT SHALL BE COMPACTED IN ACCORDANCE WITH SECTION 1000 AND 1005 OF THE STANDARD SPECIFICATIONS.
- THE CONTRACTOR SHALL NOT OPERATE ANY WATER MAIN VALVES ON THE EXISTING WATER SYSTEM.
- ALL WATER HOUSE CONNECTIONS SHALL BE FOR INSIDE METER SETTING UNLESS OTHERWISE NOTED ON PLANS OR IN SPECIFICATIONS.
- THE ENTIRE HOSPITAL SHALL BE SERVED BY THE WEST SIDE WHC WHILE THE SOUTH SIDE WHC IS OUT-OF-SERVICE.

ABANDONMENT PROCEDURES FOR EXISTING WATER SERVICE:

- CONTRACTOR SHALL COORDINATE WATER SERVICE "SHUT-OFF" WITH MR. MIKE MILLER, PROJECT MANAGER, PLANT OPERATIONS - HOWARD COUNTY GENERAL HOSPITAL AT 410-740-7948 PRIOR TO ANY SERVICE "SHUT-OFF".
- SHUTTING DOWN THE EXISTING 8" WATER MAIN, CONT. 44-1558-D AT THE NEAREST VALVE ON EACH SIDE OF THE EXISTING SERVICE TO BE ABANDONED MAY BE REQUIRED. CONTRACTOR SHALL COORDINATE "SHUT-OFF" WITH HOWARD COUNTY INSPECTOR.
- CONTRACTOR SHALL NOTIFY HOWARD COUNTY, BUREAU OF UTILITIES AT 410-313-4900 WHEN TAKING THE SOUTH SIDE WHC AND FIRE HYDRANTS OUT OF SERVICE.
- CONTRACTOR SHALL REPLACE PAVING, CURB & GUTTER AND SIDEWALKS IN ACCORDANCE WITH HOWARD COUNTY SPECIFICATIONS AND/OR AT THE DIRECTION OF THE HOWARD COUNTY INSPECTOR.
- THE "TEMPORARY" WATER SERVICE FOR THE HOSPITAL, DOMESTIC AND FIRE WILL BE PROVIDED BY THE WEST SIDE WHC UNDER CONTRACT 44-3894-D. CONTRACTOR TO COORDINATE AND CONFIRM THE SERVICE PRIOR TO ANY SERVICE SHUT DOWN RELATED TO THE ABANDONMENT OF THE EXISTING SERVICES, SEE NOTE NUMBER 1.
- CONTRACTOR SHALL RETURN EXISTING FIRE HYDRANTS, ABANDONED UNDER THIS CONTRACT, TO HOWARD COUNTY, BUREAU OF UTILITIES.



VICINITY MAP
PLAN SCALE: 1"=2000'



LOCATION MAP
PLAN SCALE: 1"=600'

ITEMS	QUANTITIES ESTIMATED	QUANTITIES	AS-BUILT INFORMATION	
			TYPE	MANUFACTURER / SUPPLIER
8" WATER	607 LF	607 LF	CL 52 D.I.P.	US PIPE / H.D. SUPPLY
6" WATER (FHS)	35 LF	35 LF	CL 52 D.I.P.	US PIPE / H.D. SUPPLY
8" 1/8" HORIZONTAL BEND	6	6	D.I.P.	SIGMA / H.D. SUPPLY
8" 1/16" HORIZONTAL BEND	1	1	D.I.P.	SIGMA / H.D. SUPPLY
8"x8" T	2	2	D.I.P.	SIGMA / H.D. SUPPLY
8"x6" FHT	2	2	D.I.P.	SIGMA / H.D. SUPPLY
8" PLUG & BUTTRESS	1	1	D.I.P.	SIGMA / H.D. SUPPLY
8" VALVE	3	3	GATE VALVE	KENNEDY VALVE / H.D. SUPPLY
6" VALVE	2	2	GATE VALVE	KENNEDY VALVE / H.D. SUPPLY
FIRE HYDRANT	2	2	FIRE HYDRANT	KENNEDY / H.D. SUPPLY

NAME OF UTILITY CONTRACTOR: **RONKIN CONSTRUCTION, INC.**

SURVEY and DRAFTING DIVISION: _____ CHECK BOX: _____ AS-BUILT DATE: **MAY 2007**

TYPE OF BUILDING	HOSPITAL
NO. OF LOTS/PARCELS:	1
NO. OF WATER HOUSE CONNECTIONS:	1
NO. OF SEWER HOUSE CONNECTIONS:	N/A
DRAINAGE AREA:	N/A
TREATMENT PLANT:	N/A

BENCH MARKS:

- 35C2 - HOWARD COUNTY MONUMENT
N. 563920.830 E. 1344204.150
- 35C5 - HOWARD COUNTY MONUMENT
N. 562148.450 E. 1344554.473

SEDIMENT CONTROL MEASURES WILL BE IMPLEMENTED IN ACCORDANCE WITH THE SEDIMENT AND EROSION CONTROL PLAN, SDP-07-057.

THIS DEVELOPMENT IS APPROVED FOR SOIL EROSION AND SEDIMENT CONTROL BY THE HOWARD COUNTY SOIL CONSERVATION DISTRICT

REVIEWED FOR HOWARD COUNTY SOIL CONSERVATION DISTRICT AND MEETS TECHNICAL REQUIREMENTS

[Signature]
DATE: 4/13/07
SOIL CONSERVATION DISTRICT

[Signature]
DATE: _____
U.S. SOIL CONSERVATION DISTRICT
NATURAL RESOURCE CONSERVATION SERVICE

AS BUILT
DATE: MAY 2007

NOTE: THIS PLAN IS A REALIGNMENT OF THE WATER MAIN CONSTRUCTED UNDER THIS CONTRACT BETWEEN STATIONS 0+87 - 4+56 AS INDICATED ON SHEETS 1 & 2

DEPARTMENT OF PUBLIC WORKS
HOWARD COUNTY, MARYLAND

DEPARTMENT OF PLANNING & ZONING
HOWARD COUNTY, MARYLAND

[Signature]
DATE: 4-12-07
CHIEF, BUREAU OF UTILITIES

[Signature]
DATE: 4-13-07
CHIEF, DEVELOPMENT ENGINEERING DIVISION

JOYCE ENGINEERING CORPORATION
CIVIL ENGINEERING LAND SURVEYING LAND PLANNING CONSTRUCTION MANAGEMENT
10706 BELT ROAD AVENUE - BELTSVILLE, MARYLAND 20705
TEL: (301) 395-4353 FAX: (301) 395-4650 WEB: www.joyceeng.com
© 2007 JOYCE ENGINEERING CORPORATION

[Signature]
ENGINEER'S SIGNATURE

DES: TAM

DRN: TAM

CHK: WJ

DATE: FEB, 2000

BY NO.

REVISION

DATE: 600' SCALE MAP NO.

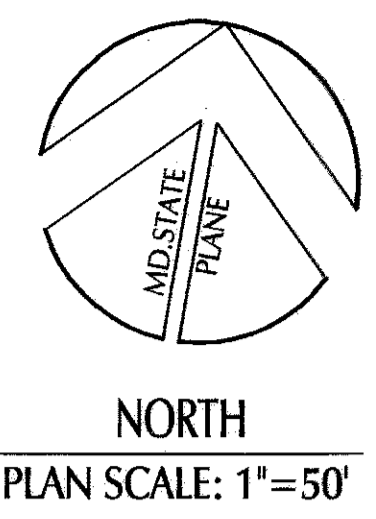
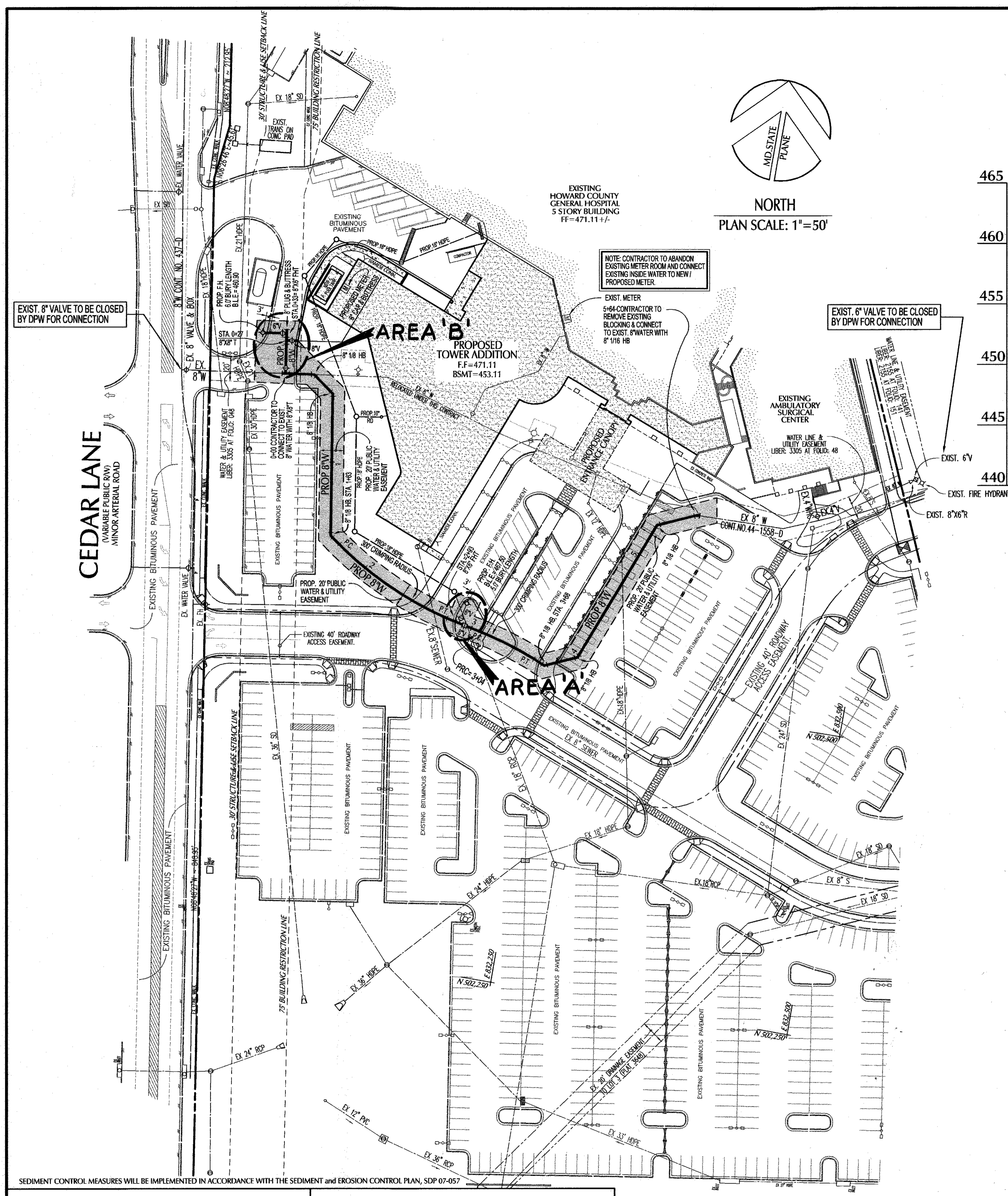
BLOCK NO.

**PUBLIC WATER MAIN
REALIGNMENT
COVER SHEET**

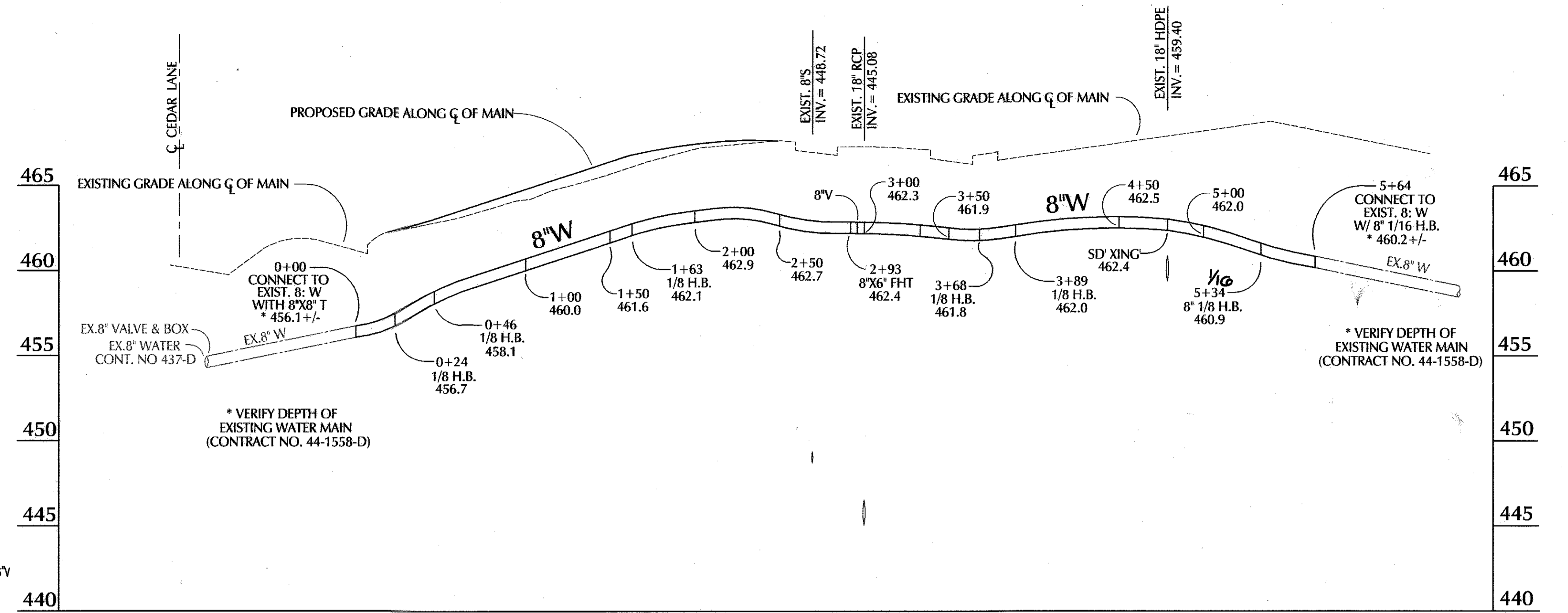
HOWARD COUNTY GENERAL HOSPITAL
CONTRACT No. 44-1558-D
TOWN CENTER
SECTION 8 - AREA 2 - LOT 4
HOWARD COUNTY, MARYLAND
ELECTION DISTRICT No. 5

SCALE AS SHOWN

SHEET 3 OF 5
TAX MAP: 35 PARCEL: 276



NORTH
PLAN SCALE: 1"=50'

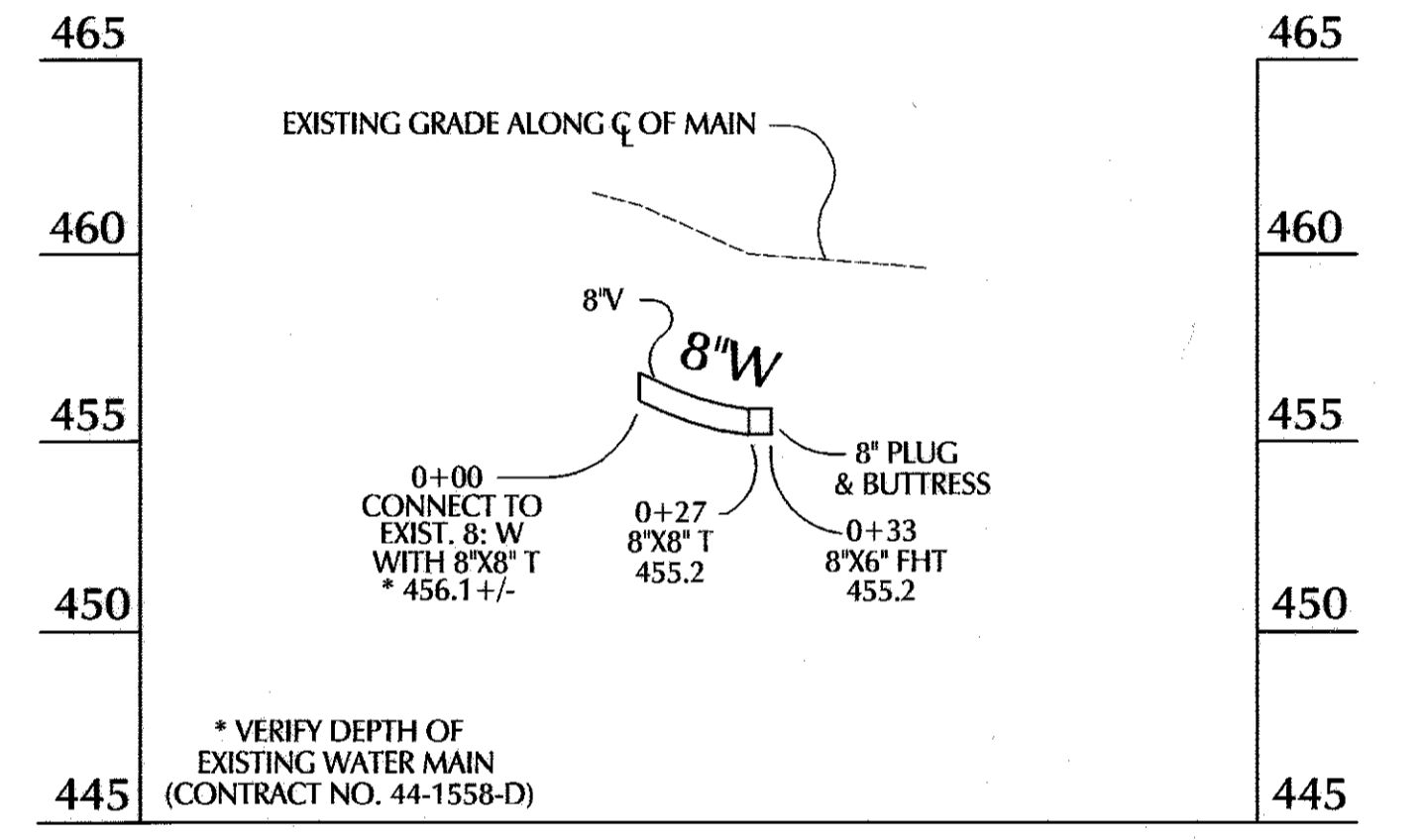


PROFILE SCALE:
HORIZONTAL: 1"=50'
VERTICAL: 1"=5'

WATER FITTING COORDINATE LOCATIONS			
STATION	TYPE OF FITTING	NORTH	EAST
8" WATER MAIN SOUTH SIDE OF BUILDING			
0+00	8"x8" T	502,716	831,995
0+24	8" 1/8 HB	502,719	832,019
0+46	8" 1/8 HB	502,706	832,037
1+63	8" 1/8 HB	502,590	832,055
2+92	8"x6" FHT	502,540	832,171
3+68	8" 1/8 HB	502,516	832,249
3+89	8" 1/8 HB	502,527	832,275
5+34	8" 1/8 HB	502,646	832,321
5+64	8" 1/16 HB	502,660	832,352
8" WATER MAIN WEST SIDE OF BUILDING			
0+00	8"x8" T	502,716	831,995
0+27	8"x8" T	502,743	831,991
0+33	8"x6" FHT	502,749	831,990

AREA 'A'
F.H. TO F.H. VALVE 10.2'
F.H. TO MAINLINE VALVE 17.0'
F.H. VALVE TO M VALVE 3'

AREA 'B'
F.H. TO F.H. VALVE 17.5'
F.H. TO M VALVE 37.0'
M VALVE TO STUB VALVE 25.5'
STUB VALVE TO F.H. VALVE 0.5'
M VALVE TO F.H. VALVE 31'



PROFILE SCALE:
HORIZONTAL: 1"=50'
VERTICAL: 1"=5'

NOTE: THE ENTIRE HOSPITAL (INCLUDING THE AMBULATORY SURGICAL CENTER, WHICH IS SERVED BY AN EXISTING 4" WHC) SHALL BE SERVED BY THE EXISTING 8" WHC (ON WEST SIDE) OF HOSPITAL WHILE THE SOUTH SIDE WHCS ARE OUT OF SERVICE.

NOTE: THIS PLAN IS A REALIGNMENT OF THE WATER MAIN CONSTRUCTED UNDER THIS CONTRACT BETWEEN STATIONS 0+87 - 4+56 AS INDICATED ON SHEETS 1 & 2

THIS DEVELOPMENT IS APPROVED FOR SOIL EROSION AND SEDIMENT CONTROL BY THE HOWARD COUNTY SOIL CONSERVATION DISTRICT

REVIEWED FOR HOWARD COUNTY SOIL CONSERVATION DISTRICT AND MEETS TECHNICAL REQUIREMENTS

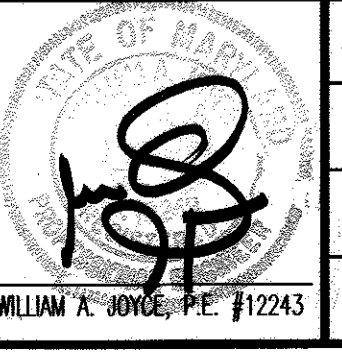
OWNER/DEVELOPER/APPLICANT:
HOWARD COUNTY GENERAL HOSPITAL, INC.
5755 CEDAR LANE
COLUMBIA, MARYLAND 21044
410-792-7962

AS BUILT
DATE: MAY 2007

DEPARTMENT OF PUBLIC WORKS
HOWARD COUNTY, MARYLAND
R. B. [Signature]
4-12-07
CHIEF, BUREAU OF UTILITIES

DEPARTMENT OF PLANNING & ZONING
HOWARD COUNTY, MARYLAND
C. E. [Signature]
4-13-7
CHIEF, DEVELOPMENT ENGINEERING DIVISION

JOYCE ENGINEERING CORPORATION
PROFESSIONAL ENGINEERS, PROFESSIONAL SURVEYORS
LAND PLANNING & CONSTRUCTION MANAGEMENT
10766 BALTIMORE AVENUE - TWIN CHIMNEYS OFFICE PARK
BELTSVILLE, MARYLAND 20705
TEL: (301) 595-4353 FAX: (301) 595-4650
1999 JOYCE ENGINEERING CORPORATION



DES:	
DRN:	
CHK:	
DATE:	

PUBLIC WATER MAIN
REALIGNMENT
PLAN and PROFILE

HOWARD COUNTY GENERAL HOSPITAL
CONTRACT No. 44-1558-D
TOWN CENTER
SECTION 8 - AREA 2 - LOT 4
HOWARD COUNTY, MARYLAND
ELECTION DISTRICT No. 5

SCALE AS SHOWN
SHEET 3 b OF 5