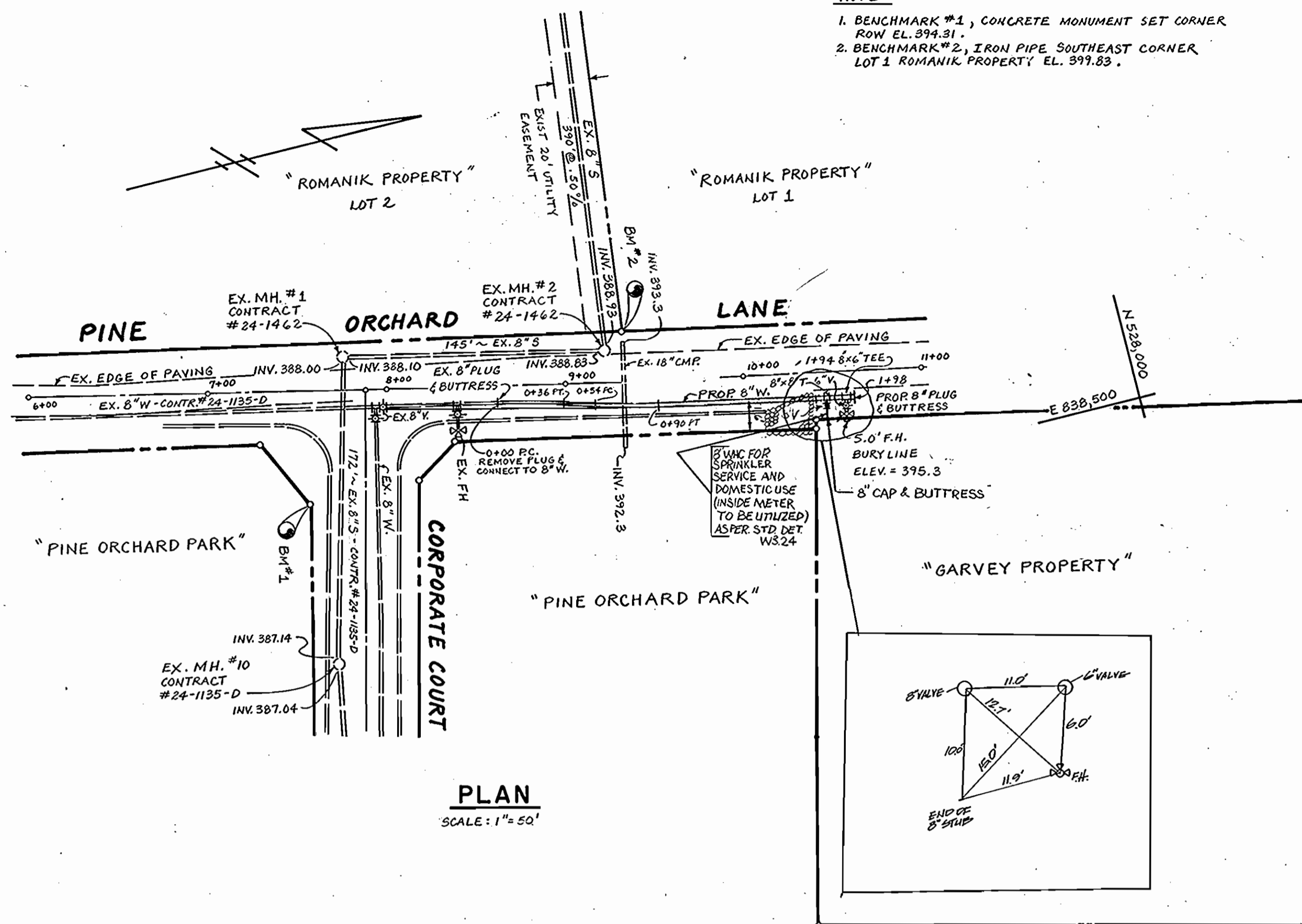
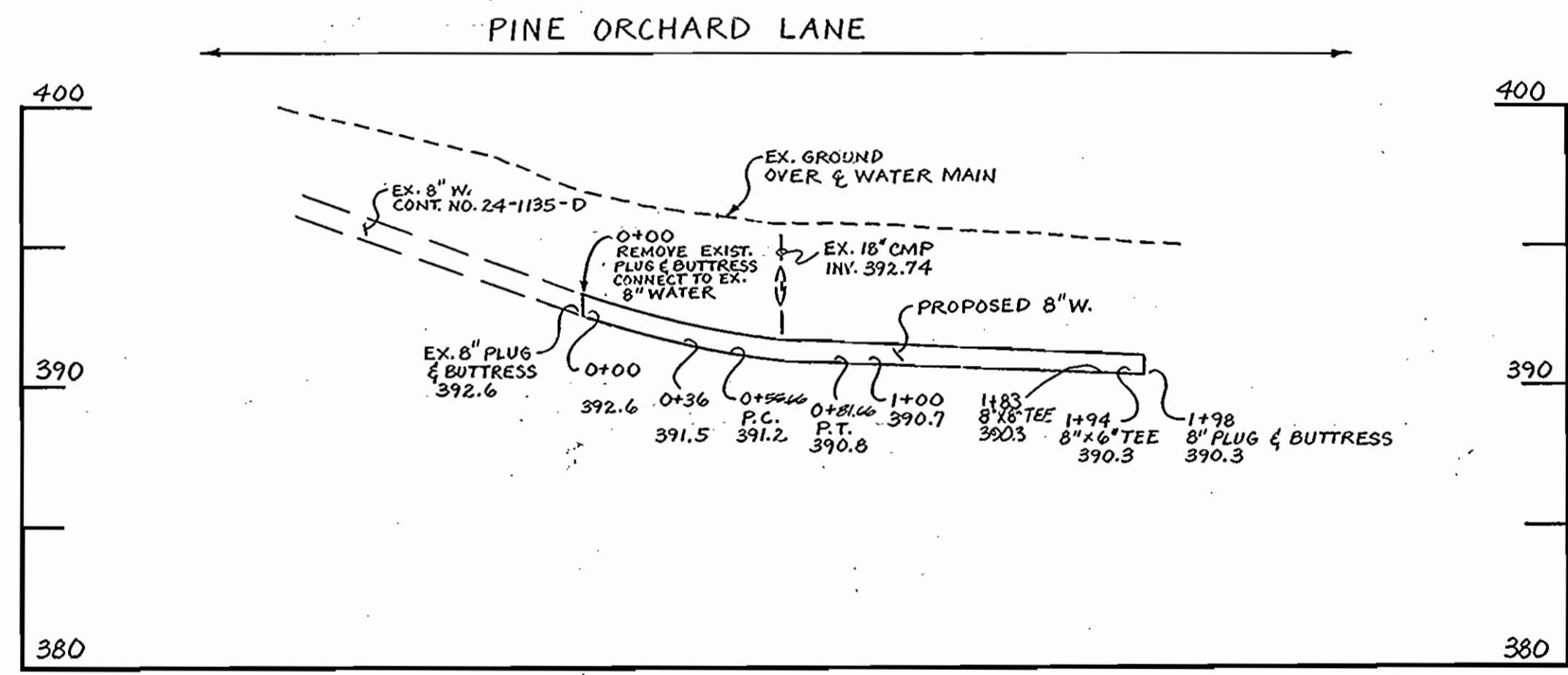


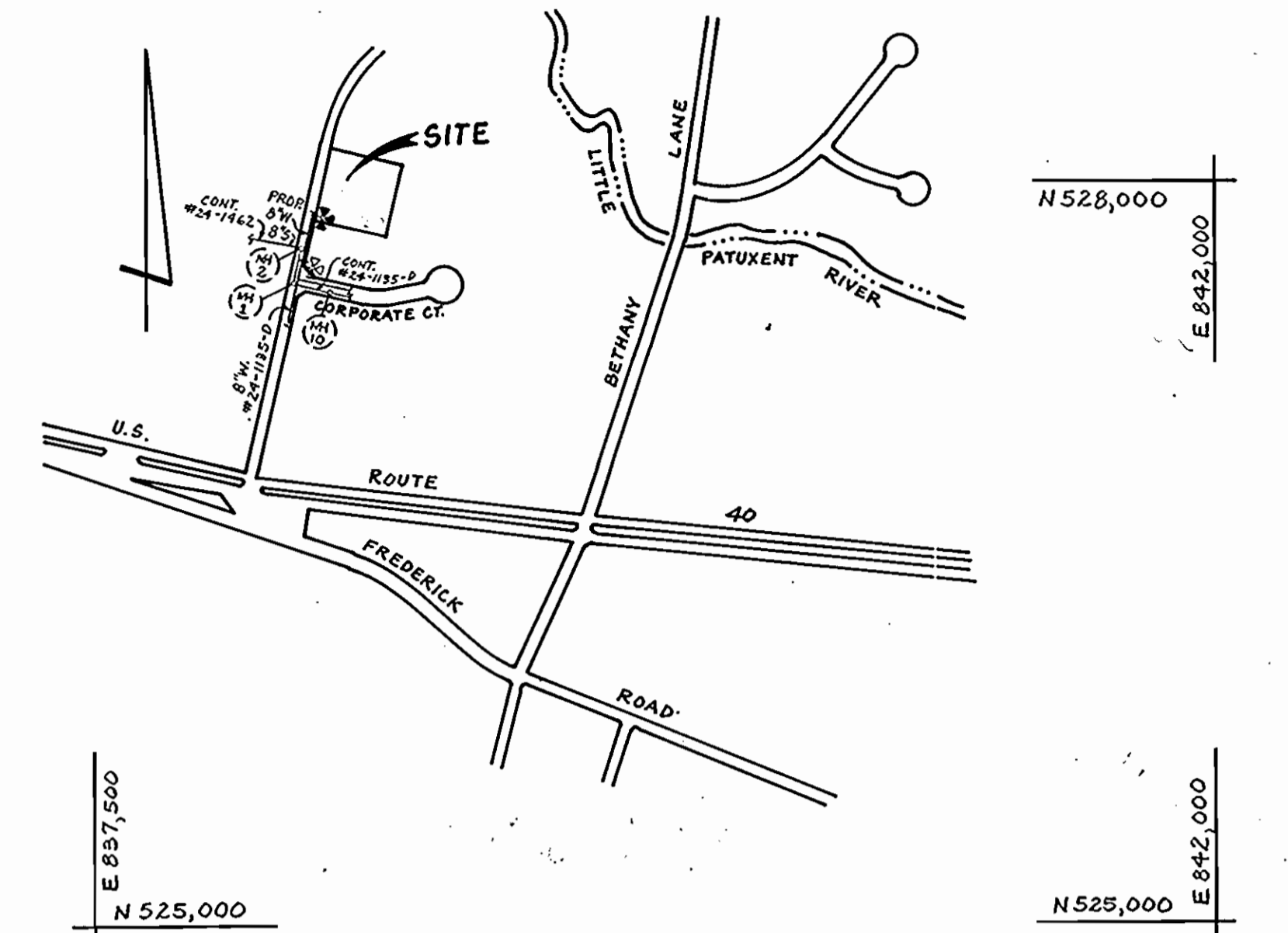
NOTE:
 1. BENCHMARK #1, CONCRETE MONUMENT SET CORNER ROW EL. 394.31.
 2. BENCHMARK #2, IRON PIPE SOUTHWEST CORNER LOT 1 ROMANIK PROPERTY EL. 399.83.



PLAN
SCALE: 1" = 50'



PROFILE
SCALE: VERT. 1" = 5', HORIZ. 1" = 50'



VICINITY MAP
SCALE: 1" = 600'

- GENERAL NOTES
- Approximate location of existing mains are shown. The contractor shall take all necessary precautions to protect existing mains and services and maintain uninterrupted supply. Any damage incurred shall be repaired immediately to the satisfaction of the Engineer at the Contractor's expense.
 - All horizontal controls are based on Maryland State Coordinates.
 - All vertical controls are based on U.S.G.S. data.
 - All pipe elevations shown are invert elevations.
 - Clear all utilities by a minimum of 6".
 - For details not shown on the drawings, and for materials and construction methods, use Howard County Design Manual, Volume IV, Standard Specifications and Details for Construction. The contractor shall have a copy of Volume IV on the job.
 - Where test pits have been made on existing utilities, they are noted by the symbol at the location of the test pit. A note or notes containing the results of the test pit or pits is included on the drawings. Existing utilities in the vicinity of the proposed work for which test pits have not been dug shall be verified by the Contractor to his own satisfaction. Any damage to existing facilities due to the Contractor's negligence shall be repaired at the Contractor's expense.
 - Contractor shall notify the following utilities or agencies at least five working days before starting work shown on these plans:
 State Highway Administration - 531-5553
 Baltimore Gas & Electric Co. - Contractor Services 561-2585
 Baltimore Gas & Electric Co. Under Ground Damage Control - 234-5621
 Baltimore Gas & Electric Co. Trouble Shooting - 298-9013
 Miss Utility - 1-559-0100
 Colonial Pipeline Co. - 795-1390
 Bureau of Utilities, Howard County Department of Public Works - 992-2366
 - Trees and shrubs are to be protected from damage to maximum extent. Trees and shrubs located within the construction strip are not to be removed or damaged by the Contractor.
 - Contractor shall remove trees, stumps and roots along line of excavation. Payment for such removal shall be included in the unit price bid for construction of the main.

- WATER NOTES
- All water mains to be D.I.P. Class 52 unless otherwise noted.
 - Tops of all water mains to have a minimum of 3-1/2' cover unless otherwise noted.
 - Valves adjacent to tees shall be strapped to tees.
 - All fittings shall be buttresses or anchored with concrete in accordance with the Standard Details unless otherwise provided for on the drawings.
 - Fire hydrants shall be set to the bury line elevations shown on the drawings. All fire hydrants shall be strapped and buttressed with concrete in accordance with Standard Details. Soil around the fire hydrant shall be compacted in accordance with Section 1003 the Standard Specifications.
 - The contractor shall not operate any water main valves on the existing water system.
 - All water house connections shall be for inside meter setting, unless otherwise noted on the plans or in the Specifications.
 - SERVICE CLAMPS ARE TO HAVE STAINLESS STRAPS.

TYPE OF BUSINESS:	OFFICE / ACCESSORY STORAGE
NUMBER OF LOTS:	1
NO. OF WATER HOUSE CONNECTIONS:	1
NO. OF SEWER HOUSE CONNECTIONS:	1 EX. SHU
DRAINAGE AREA:	SEE US PUMPING STATION (PATAPSCO)

SEDIMENT CONTROL MEASURES WILL BE IMPLEMENTED IN ACCORDANCE WITH SECTION 219 OF THE SPECIFICATIONS AND WITH SDP - 86-244
 SEDIMENT & EROSION CONTROL

REVIEWED FOR HOWARD SOIL CONSERVATION DISTRICT AND MEETS TECHNICAL REQUIREMENTS
 James M. Nelson
 U.S. SOIL CONSERVATION SERVICE
 DATE: 10/21/86

THIS DEVELOPMENT PLAN IS APPROVED FOR SOIL EROSION AND SEDIMENT CONTROL BY THE HOWARD SOIL CONSERVATION DISTRICT.

APPROVED:
 Stephen L. Fisher
 HOWARD SCD
 DATE: 10/21/86

DEPARTMENT OF PUBLIC WORKS
 HOWARD COUNTY, MARYLAND

Robert M. Deimler
 CHIEF, BUREAU OF UTILITIES
 DATE: 10-29-86

William E. Fisher
 CHIEF, LAND DEVELOPMENT DIV.
 DATE: 10-29-86

boender associates
 inc.
 consulting engineers
 land surveyors
 land planners

COURTHOUSE SQUARE
 3565 ELLICOTT MILLS DRIVE
 ELLICOTT CITY, MD 21043
 13011 465-7777



DES: W.N.			
ORN: ARR.			
CHK: W.N.			
DATE: 6/86			
BY NO.		REVISION	DATE

TITLE SHEET

GARVEY PROPERTY
 SECOND ELECTION DISTRICT
 CONTRACT NO. 44-1553-D
 TAX MAP: 24 1553-D

SCALE AS SHOWN

SHEET 1 OF 1