

**VICINITY MAP**  
SCALE: 1"=400'

WATER CODE 802 SEWER CODE 8020000

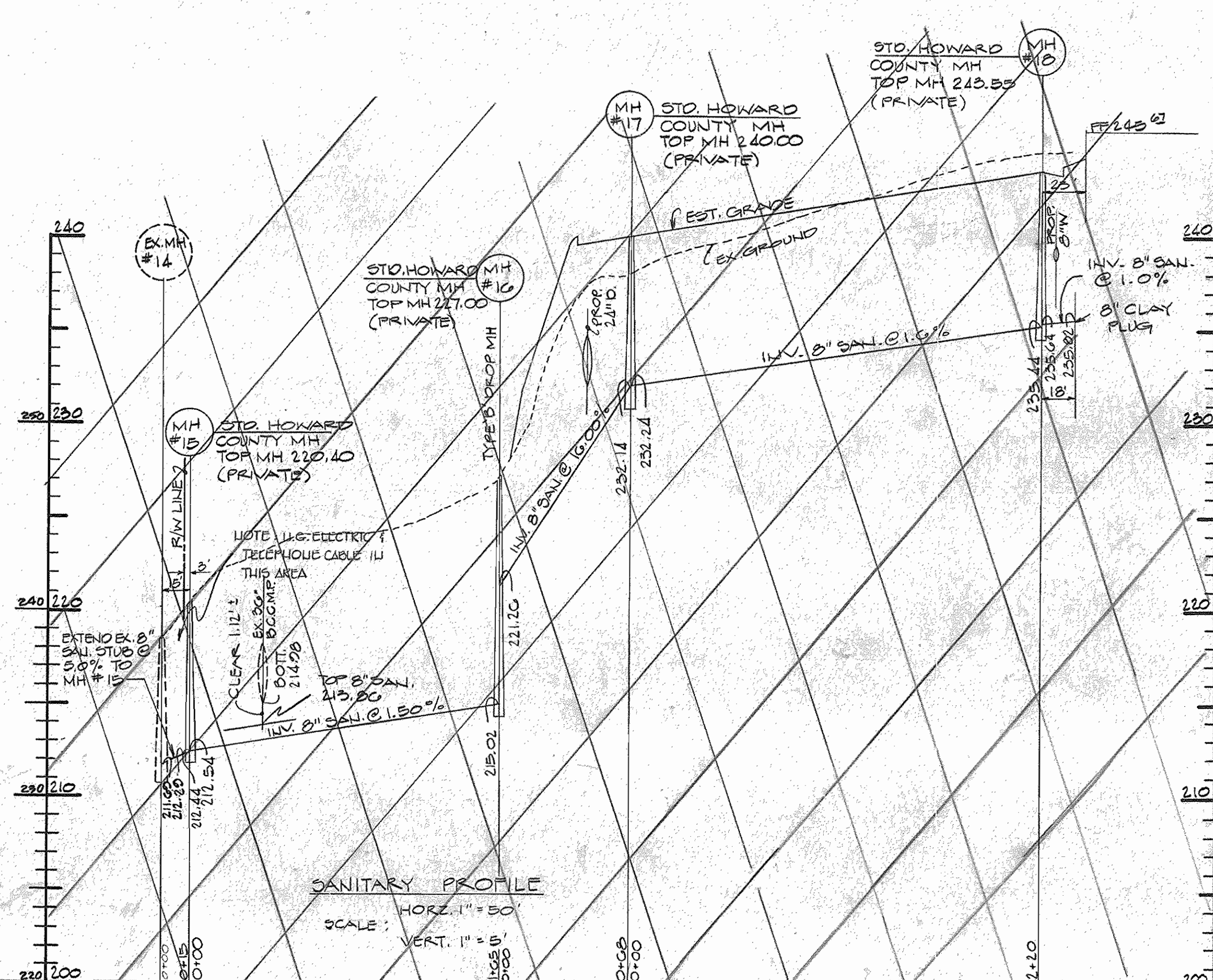
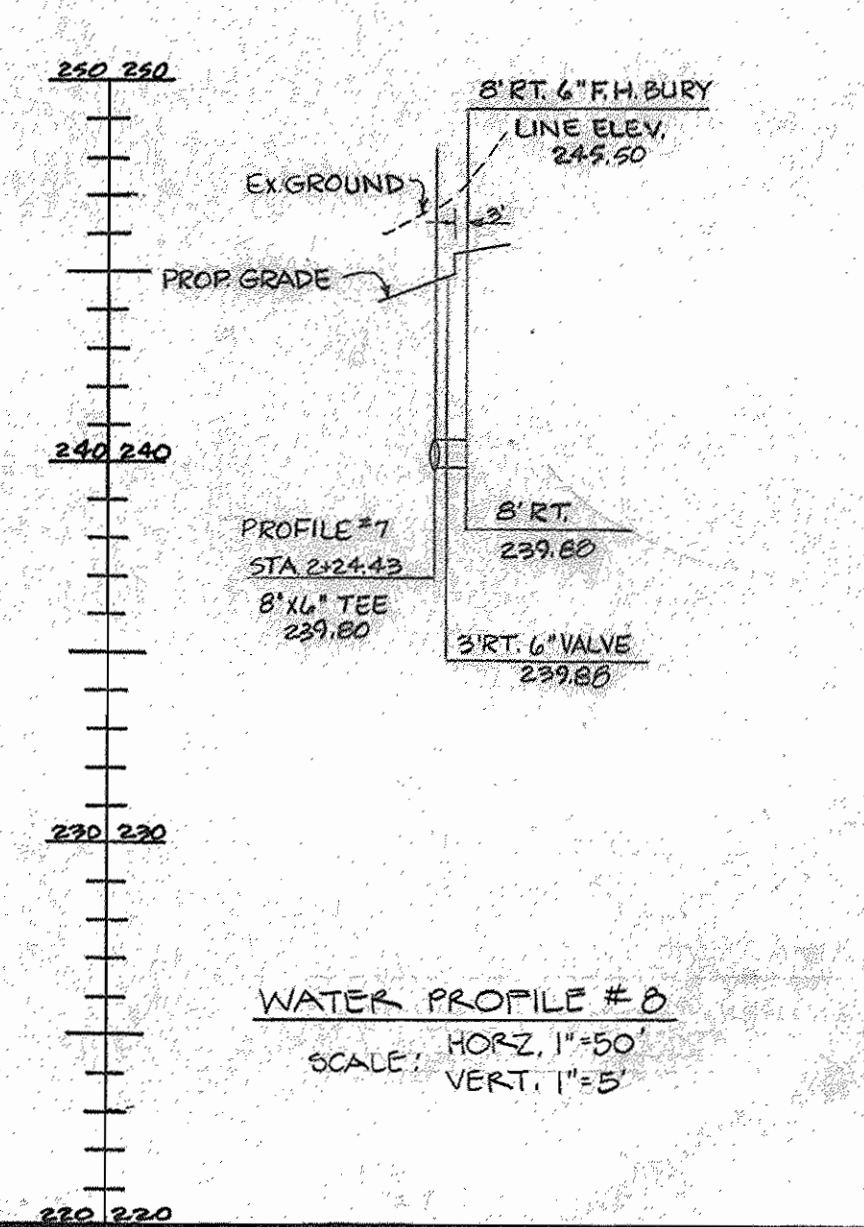
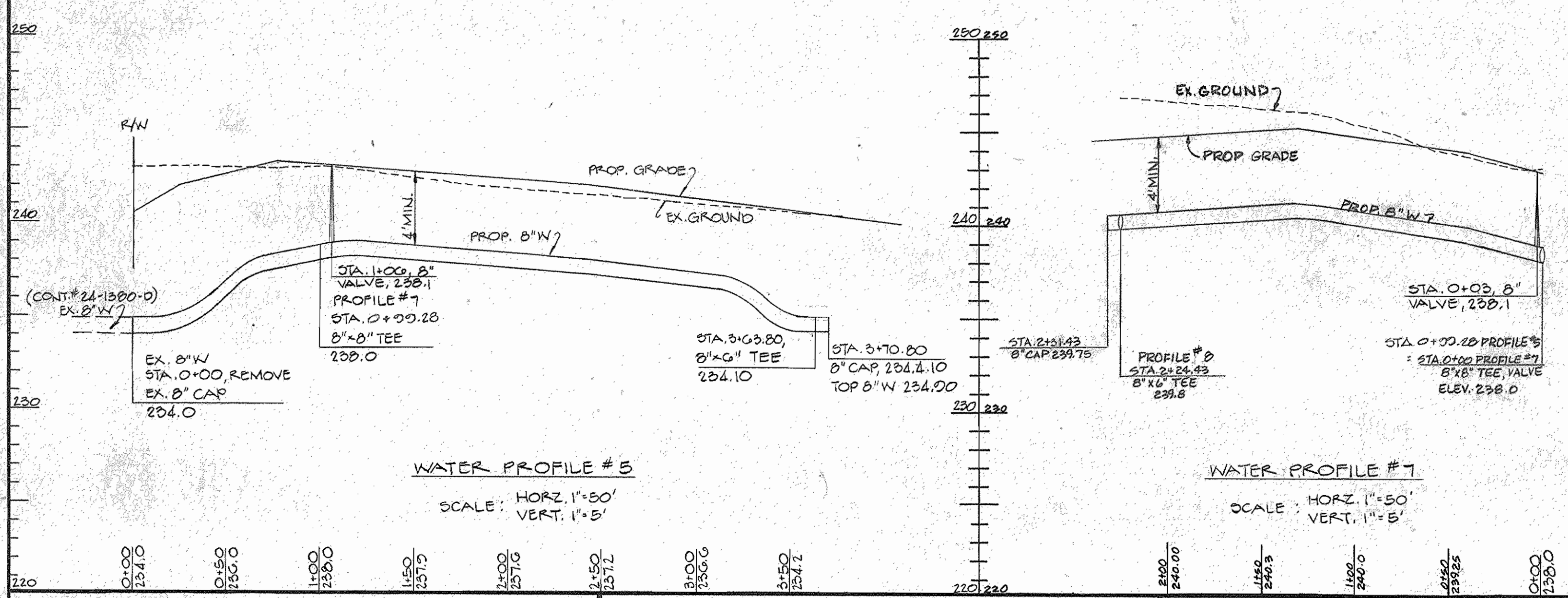
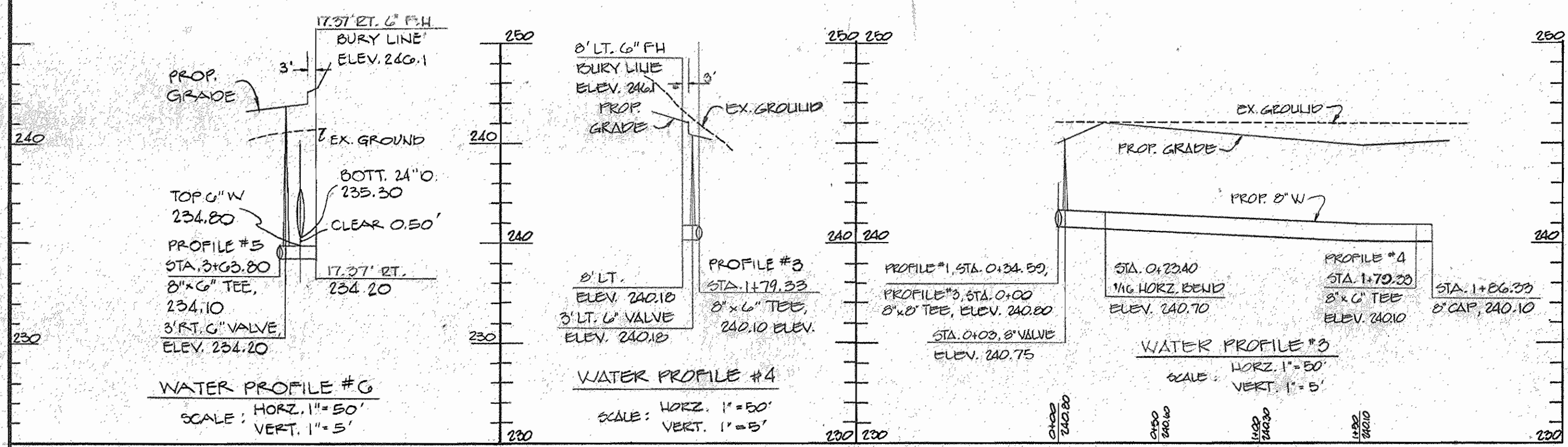
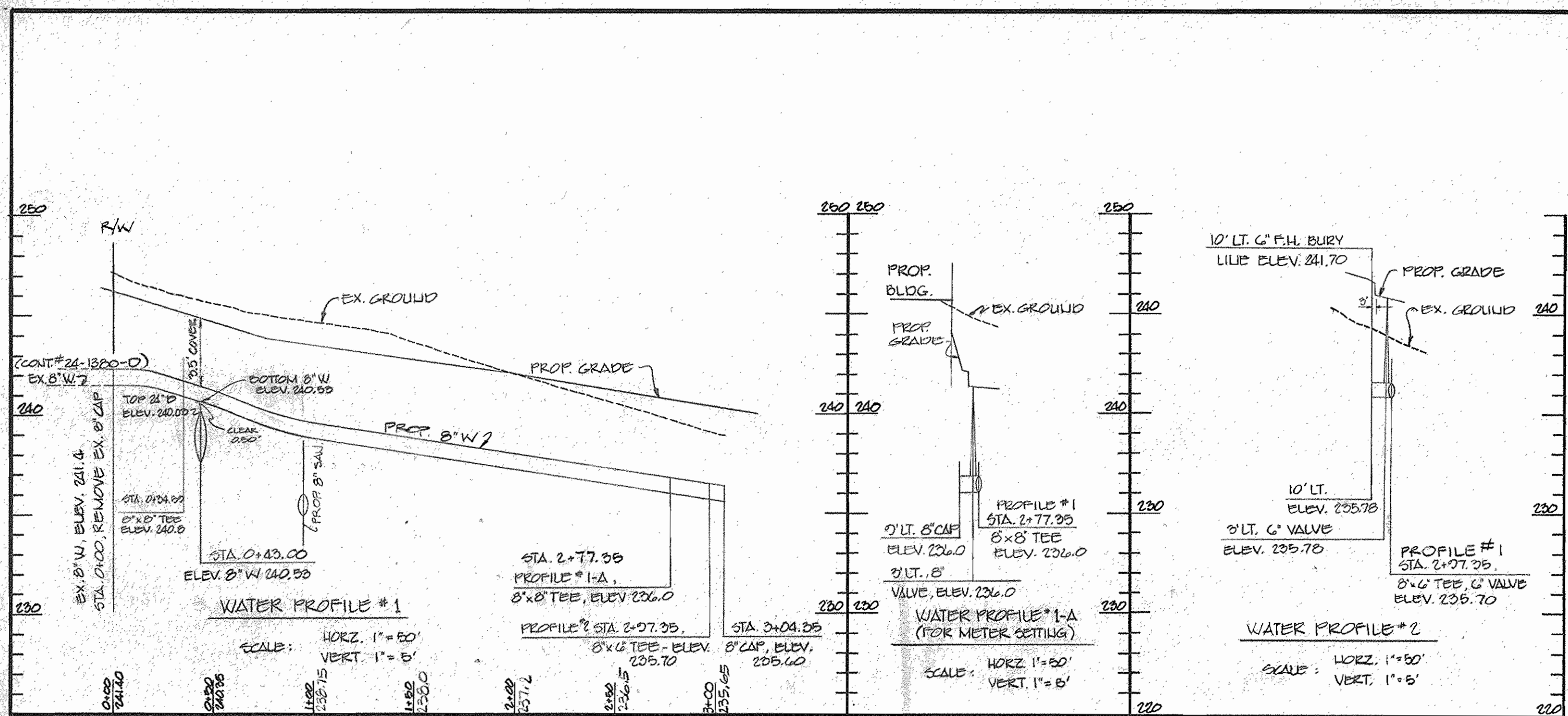
TYPE OF BUILDING: OFFICE/WAREHOUSE  
NUMBER OF LOTS: 1  
NUMBER OF WATER H.C.: 1  
NUMBER OF SEWER H.C.: 1

**BENCH MARKS**  
P&W B.M.#4 ELEV 211.740  
R.R. SPIKE SET IN C&P #26, 66E #263656,  
S. SIDE DORSEY RUN ROAD.  
P&W B.M.#7  
R.R. SPIKE SET IN G&E POLE #263650,  
S. SIDE DORSEY RUN ROAD

- NOTES:**
- APPROXIMATE LOCATION OF EXISTING MAINS ARE SHOWN. THE CONTRACTOR SHALL TAKE ALL NECESSARY PRECAUTIONS TO PROTECT EXISTING MAINS AND SERVICES AND MAINTAIN UNINTERRUPTED SUPPLY. ANY DAMAGE INCURRED SHALL BE REPAIRED IMMEDIATELY TO THE SATISFACTION OF THE ENGINEER AT THE CONTRACTOR'S EXPENSE.
  - ALL HORIZONTAL CONTROLS ARE BASED ON MARYLAND STATE COORDINATES.
  - ALL PIPE ELEVATIONS SHOWN ARE INVERT ELEVATIONS.
  - CLEAR ALL UTILITIES BY A MINIMUM 6". CLEAR ALL POLES BY 2'-0" MINIMUM OR TUNNEL AS REQUIRED ANY COST FOR CONSTRUCTION TO THE CONTRACTOR FOR TUNNELING OR BRACING AT POLES SHALL BE INCLUDED IN THE UNIT PRICES BID FOR CONSTRUCTION OF THE MAIN.
  - FOR DETAILS NOT SHOWN ON THE DRAWINGS AND FOR MATERIALS AND CONSTRUCTION METHODS, USE HOWARD COUNTY DESIGN MANUAL VOLUME IV STANDARD SPECIFICATIONS AND DETAILS FOR CONSTRUCTION. THE CONTRACTOR SHALL HAVE A COPY OF VOLUME IV ON THE JOB.
  - CONTRACTOR SHALL LOCATE EXISTING UTILITIES A MINIMUM OF TWO WEEKS IN ADVANCE OF CONSTRUCTION OPERATIONS IN THE VICINITY OF PROPOSED UTILITIES AT HIS OWN EXPENSE.
  - CONTRACTOR SHALL NOTIFY THE FOLLOWING UTILITIES OR AGENCIES AT LEAST FIVE WORKING DAYS BEFORE STARTING WORK ON THESE PLANS: STATE HIGHWAY ADMINISTRATION - 591-6933; BALTO. GAS & ELECT. CO. - CON'T SERVICES - 561-2585; BALTO. GAS & ELECTRIC CO. - UNDERGROUND DAMAGE CONTROL - 234-5621; BALTO. GAS & ELECTRIC CO. - TROUBLE SHOOTING - 298-9013; M&S UTILITY 1-591-0100; COLONIAL PIPELINE CO. 795-1390; BUREAU OF UTILITIES HOWARD CO. DEPT. OF PUBLIC WORKS - 992-2366.
  - TREES AND SHRUBS ARE TO BE PROTECTED FROM DAMAGE TO MAXIMUM EXTENT. TREES AND SHRUBS LOCATED WITHIN THE CONSTRUCTION STRIP ARE NOT TO BE REMOVED OR DAMAGED BY THE CONTRACTOR.
  - CONTRACTOR SHALL REMOVE TREES STUMPS AND ROOTS ALONG LINE OF EXCAVATION. PAYMENT FOR SUCH REMOVAL SHALL BE INCLUDED IN THE UNIT PRICE BID FOR CONSTRUCTION OF THE MAIN.
  - ALL WATER MAINS TO BE D.I.P. UNLESS OTHERWISE NOTED.
  - TOPS OF ALL WATER MAINS TO HAVE A MINIMUM OF 3'-3" COVER UNLESS OTHERWISE NOTED.
  - VALVE ADJACENT TO TEES SHALL BE STRAPPED TO TEES.
  - ALL FITTINGS SHALL BE BUTTRESSED OR ANCHORED WITH CONCRETE IN ACCORDANCE WITH THE STANDARD DETAILS UNLESS OTHERWISE PROVIDED ON THE DRAWINGS.
  - FIRE HYDRANTS SHALL BE SET TO THE BURY LINE ELEVATIONS SHOWN ON THE DRAWINGS. ALL FIRE HYDRANTS TO BE SET - 3" (THREE) BEHIND PROPOSED FACE OF CURB UNLESS NOTED OTHERWISE. ALL FIRE HYDRANTS SHALL BE STRAPPED AND BUTTRESSED WITH CONCRETE IN ACCORDANCE WITH STANDARD DETAILS, SOIL AROUND THE FIRE HYDRANT SHALL BE COMPACTED IN ACCORDANCE WITH SECTION 1003 OF THE STANDARD SPECIFICATIONS.
  - THE CONTRACTOR SHALL NOT OPERATE ANY WATER MAIN VALVES ON THE EXISTING WATER SYSTEMS.
  - MINIMUM CRIMP RADIUS WILL BE AS SPECIFIED BY PIPE MANUFACTURER.
  - PLACE REGULATION 'MEN WORKING' AND 'WARNINGS' SIGNS AS REQUIRED TO COMPLY WITH THE MD. STATE HIGHWAY ADMINISTRATIONS MANUALS FOR HIGHWAY CONSTRUCTION AND MAINTENANCE OPERATIONS.
  - ALL SEWER MAINS SHALL BE CORR., R.C.S.R., V.C.R.X., A.C.P., CLASS 2400 OR R.V.C. UNLESS OTHERWISE NOTED.
  - THE CONTRACTOR SHALL PROVIDE A JOINT IN A SEWER MAIN WITHIN 2'-0" OF EXTERIOR MANHOLE WALL.
  - ALL MANHOLES SHALL BE 4'-0" INSIDE DIAMETER UNLESS OTHERWISE NOTED.
  - MANHOLES DESIGNATED WATER TIGHT IN THE PLAN & PROFILE SHALL HAVE WATER TIGHT FRAME & COVERS, STANDARD DETAIL G-552. WHERE WATER TIGHT MANHOLE FRAME & COVER IS USED, SET TOP OF FRAME 1'-6" ABOVE FINISHED GRADE UNLESS OTHERWISE NOTED ON THE DRAWINGS.
  - CONTRACTOR SHALL NOTIFY THE ENGINEER, G.W. STEPHENS JR. & ASSOC. INC., 825-8120 A MIN. OF TWO (2) WORKING DAYS IN ADVANCE OF COVERING ANY UNDERGROUND UTILITY TO ALLOW INSTALLATION FOR PURPOSE OF "AS-BUILT" CERTIFICATION.
  - SERVICE CLAMPS ARE TO HAVE STAINLESS STRAPS.

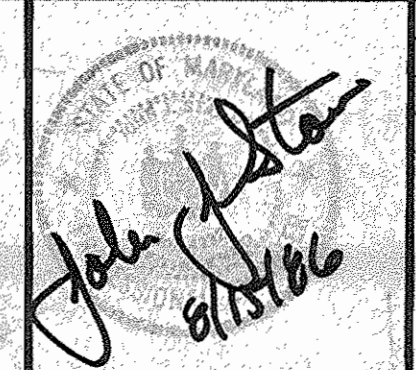
QUANTITIES			
ITEM	ESTIMATE	AS-BUILT	MATERIAL/SUPPLIER
8" DIP	1,102	1,102	DIP CL. GRIFFIN PIPE CO.
6" DIP	44	39	"
8"x8" TEE	3	3	M&S TEE #21-11 GRIFFIN
8"x6" TEE	4	4	"
8" 1/2" HORIZ. BEND	1	0	OMIT
6" F.H.	4	4	6" F.H. VALVE C-800 M&S GATE VALVE C-800
6" F.H. VALVE	4	4	"
8" VALVE	4	4	"
8" CAPS	4	5	M.S. CAP CHH/ASPH

THE DEVELOPMENT PLAN IS APPROVED FOR SOIL EROSION AND SEDIMENT CONTROL BY THE HOWARD SOIL CONSERVATION DISTRICT: <i>Stephen L. Huhn</i> 8-21-86 HOWARD SOIL CONSERVATION DISTRICT DATE		REVIEW FOR HOWARD SOIL CONSERVATION DISTRICT AND MEETS TECHNICAL REQUIREMENTS. <i>James M. Huhn</i> 8-21-86 U.S. SOIL CONSERVATION SERVICE DATE		SEDIMENT CONTROL MEASURES FOR THIS CONTRACT WILL BE IMPLEMENTED IN ACCORDANCE WITH SECTION 219 OF THE STANDARD SPECIFICATION & S.D.P. 86-246	
DEPARTMENT OF PUBLIC WORKS HOWARD COUNTY, MARYLAND <i>James F. Neenan</i> 8-28-86 DIRECTOR OF PUBLIC WORKS		ENGINEER GEORGE W. STEPHENS, JR. AND ASSOCIATES 909 ALLEGHENY AVENUE TOWSON, MARYLAND 21204 825-8120		PLAN AND PROFILE FOR PROPOSED WATER MAIN CONTRACT NO: 44-1552 600' SCALE MAP NO. _____ BLOCK NO. _____	
DESIGNED BY: B.F. DRANKAL BY: D.M.D. CHECKED BY: J.J.S.		AS-BUILT AS BUILT G. WALLACE 8/19/87		PROPOSED OFFICE & WAREHOUSE BALTIMORE WASHINGTON INDUSTRIAL PARK BLOCK 'E' PARCEL 'P' TAX MAP 48 ELECT. DIST. #6 HOWARD COUNTY, MD. SCALE: 1"=50' AUG. 15, 1986	



DEPARTMENT OF PUBLIC WORKS  
HOWARD COUNTY, MARYLAND  
Director of Public Works: *Henry F. Nalley* DATE: 8-24-86  
Chief, Bureau of Utilities: *Robert W. Reardon* DATE: 8-24-86  
Chief, Bureau of Engineering: *John J. Reilly* DATE: 8-24-86  
Chief, Land Development Div.: *Joseph E. Kelly* DATE: 8-24-86

ENGINEER  
GEORGE W. STEPHENS, JR.  
AND ASSOCIATES  
303 ALLEGHENY AVENUE  
TOWSON, MARYLAND 21284  
825-8120



DESIGNED BY: B.F.	BY NO.	REVISION	DATE
DRAWN BY: D.M.D.			
CHECKED BY: J.J.S.			

PLAN AND PROFILE  
FOR  
PROPOSED WATER MAIN  
CONTRACT NO. 44-1552

PROPOSED OFFICE & WAREHOUSE  
BALTIMORE WASHINGTON INDUSTRIAL PARK  
BLOCK 'E' PARCEL 'F'  
TAX MAP 48 ELECTION DIST. #6  
HOWARD COUNTY, MD.  
SCALE: 1" = 50'  
AUG. 15, 1986

SCALE AS SHOWN  
SHEET NO.  
2 OF 2