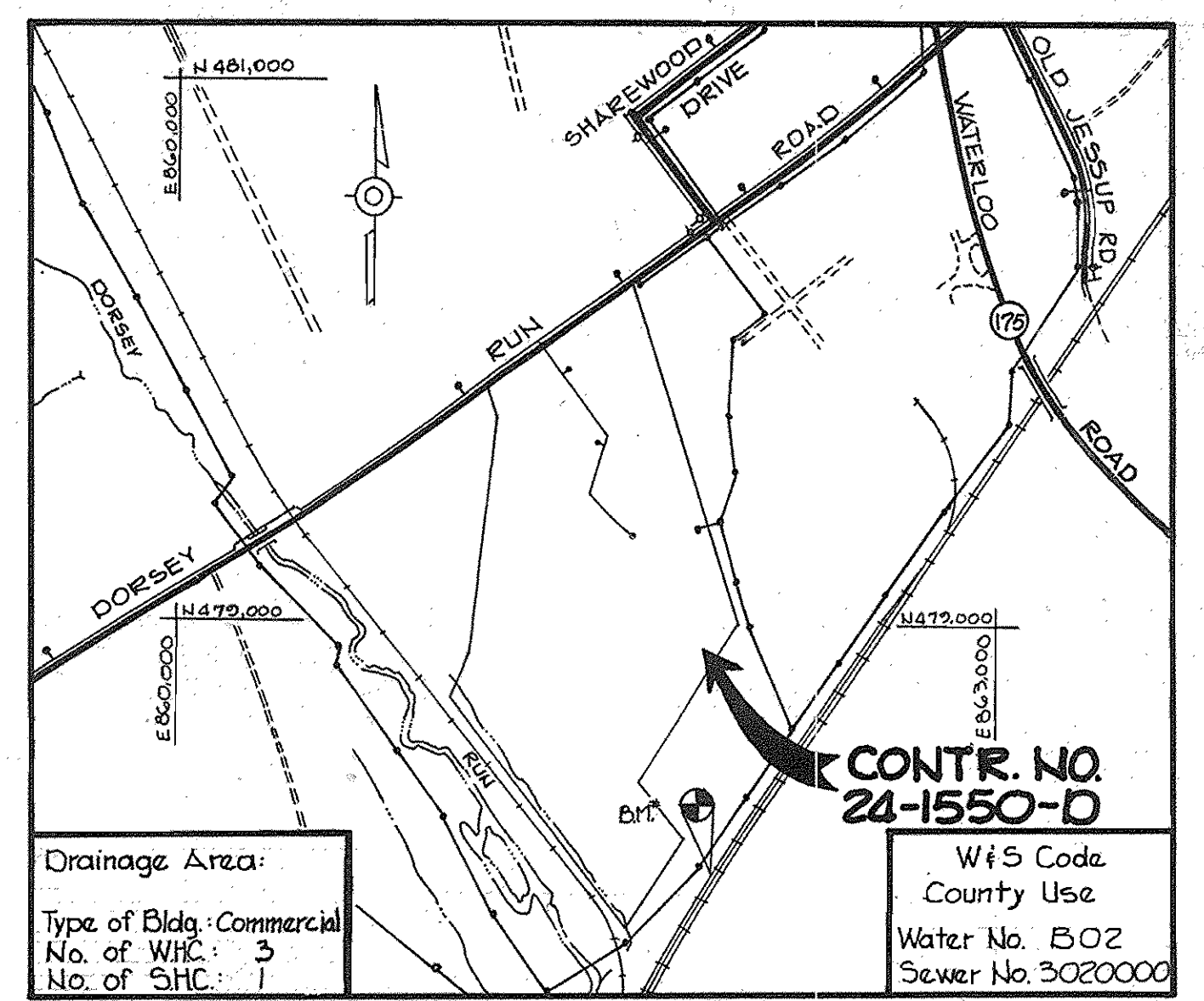


Note: Installation of the 8" water main under the existing pavement of Dorsey Run Road shall be accomplished by boring and jacking a 20" sleeve in accordance with Ho.Co Std. detail W421.(Type 3)



VICINITY MAP
SCALE: 1"=600'

GENERAL NOTES

- Approximate location of existing mains are shown. The contractor shall take all necessary precautions to protect existing mains and services and maintain uninterrupted supply. Any damage incurred shall be repaired immediately to the satisfaction of the engineer at the contractor's expense.
- All horizontal controls are based on Maryland State Coordinates.
- All vertical controls are based on USGS data.
- All pipe elevations shown are invert \ominus elevations.
- Clear all utilities by a minimum of 6'. Clear all poles by 2'-0" minimum or tunnel as required. The owner has contacted the utility companies and has made arrangements for bracing of poles as shown on the drawings. In the event the contractor's work requires the bracing of additional poles, any cost incurred by the owner for the bracing of additional poles or damages shall be deducted from money owed the contractor. The contractor shall coordinate with the utility companies to schedule the bracing of the poles.
- For details not shown on the drawings, and for materials and construction methods, use Howard County Design Manual, Volume IV, Standard Specifications and Details for Construction. The contractor shall have a copy of Volume IV on the job.
- Where test pits have been made on existing utilities, they are noted by the symbol \boxplus at the location of the test pit. A note or notes containing the results of the test pit or pits is included on the drawings. Existing utilities in the vicinity of the proposed work for which test pits have not been dug shall be located by the contractor two weeks in advance of construction operations at his own expense.
- Contractor shall notify the following utilities or agencies at least five working days before starting work shown on these plans:
 State Highway Administration - 531-5533
 Baltimore Gas and Electric Co.-Contractor Services - 561-2585
 Baltimore Gas and Electric Co.-Under Ground Damage Control - 234-5621
 Baltimore Gas and Electric Co.-Trouble Shooting - 208-2013
 Miss Utility - 1-800-257-7777
 Colonial Pipeline Co. - 775-1390
 Bureau of Utilities, Howard County Department of Public Works - 522-2366
- Trees are to be protected from damage to maximum extent. Trees located within the construction strip are not to be removed or damaged by the contractor.
- Contractor shall remove trees, stumps and roots along line of excavation as directed by the engineer. Payment for such removal shall be included in the unit price bid for excavation and backfill.
- Place regulation 'Men Working' and warning signs as required to comply with Maryland State Highway Administration Manual of Traffic Control and Highway Construction and Maintenance Operations.
- All water mains to be D.I.P. unless otherwise noted.
- Top of all water mains to have a minimum of 3 1/2' cover unless otherwise noted.
- Valves adjacent to trees shall be strapped to trees.
- Block all fittings with concrete.
- Bury line elevations on fire hydrants shall be set to the elevations shown on the drawings. All fire hydrants shall be strapped and buttressed with concrete in accordance with standard details. Soil around the fire hydrant to be compacted in accordance with Section 1003 & 1008 of the General Requirements for Water and Sewer.
- All water house connections shall be for an inside meter setting.
- The contractor shall not operate any water main valves on the existing system.
- For all copper water house connections utilize flared type fittings only.
- The service clamps are to have stainless steel straps.
- All sewer mains shall be C.S.P.X., V.C.P.X., P.V.C. or A.C.P. Class 2400 unless otherwise noted.
- The contractor shall provide a joint in all sewer mains within 2'-0" of exterior manhole wall.
- All manholes shall be 4'-0" inside diameter unless otherwise noted.
- Manholes shown with 12" and 16" walls are brick manholes only.
- Manholes designated W.T. in plan and profile shall have water-tight frame and covers, Standard Detail G-5.52 Volume IV. Where water-tight manhole frame and cover is used, set top of frame 1'-6" above finished grade.
- House(s) with the symbol 'C.N.S.' indicates the cellar can not be served.
- All water house connections shall have a minimum vertical clearance of 12" above all sanitary sewer crossing.
- All sanitary sewer house connections shall have a minimum vertical clearance of 12" below all water main crossings.
- Profile stations shall be adjusted as necessary to conform with plan dimensions.
- No pipe shall be laid until lines of excavation have been brought to subgrade.

BURDETT OXYGEN CO., INC.
871/244

HARRY SMITH
833/670

CONCRETE PIPE
AND PRODUCT CO.
364/137

PLAN
SCALE: 1"=50'

Sediment control measures for the contract will be implemented in accordance with Article 15 of the specifications and as shown on this plan and as shown on SDP-86-255

Howard Soil Conservation District:
Reviewed for Howard Soil Conservation District and meets technical requirements.

U.S. Soil Conservation District
Date: 10-9-86
This plan is approved for soil erosion and sediment control by the Howard Soil Conservation District.

Stephen R. Eubank
Howard Soil Conservation District
Date: 10/9/86

ITEM	QUANTITIES		MATERIAL SUPPLIER
	ESTIMATED	AS BUILT	
8"x8" T	1		
8"V	1		
20" Steel Sleeve	30 L.F.	30'	AS SPECIFIED
6" Water	F 214 L.F.	291'	U.S. PIPE & FOUNDRY
8" Water	G 732 L.F.	582'	GRIFFIN PIPE PROD.
Fire Hydrant(s)	F 3	3	U.S. PIPE & FOUNDRY
8" Sewer	D.I.P. 25 L.F.	14'	" " " "
Manhole(s)	17.5 V.F.	17.5 V.F.	" " " "
G'V's excl. F.H.	D 4	4	U.S. PIPE & FOUNDRY
12"x8" T.S.V.	BC 1 E.C.	1	" " " "

DEPARTMENT OF PUBLIC WORKS
HOWARD COUNTY, MARYLAND

Director of Public Works: 10-17-86
 Chief, Bureau of Engineering: 10-22-86
 Chief, Bureau of Utilities: 10-17-86
 Chief, Land Development Division: 10-22-86

THE RIEMER GROUP, INC.
3105 N. RIDGE ROAD
ELLCOTT CITY, MARYLAND

DES: DAM			
DRN: FDM			
CHK: J.K.B.	CWM	Z	ADDED 80 LF 8" WATER
	SV.W	I	ADDED PLAN SCALE
DATE: 6-2-86	BY	NO.	REVISION

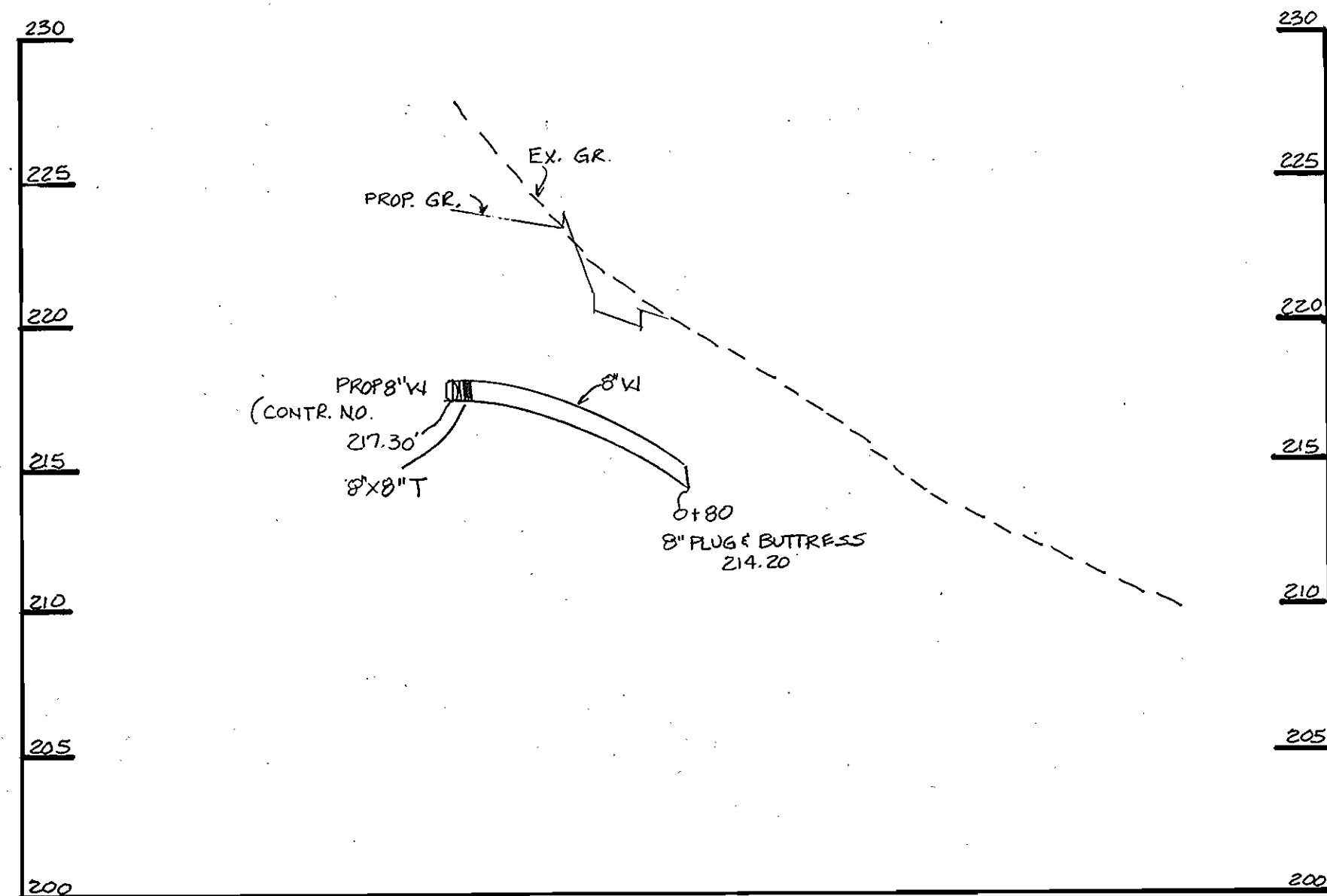
PLAN OF
WATER AND SEWER MAINS

600' SCALE MAP NO. 43448 BLOCK NO.

DORSEY RUN PARK
6TH ELECTION DISTRICT
HOWARD COUNTY MARYLAND
CONTRACT NO. - 24-1550-D

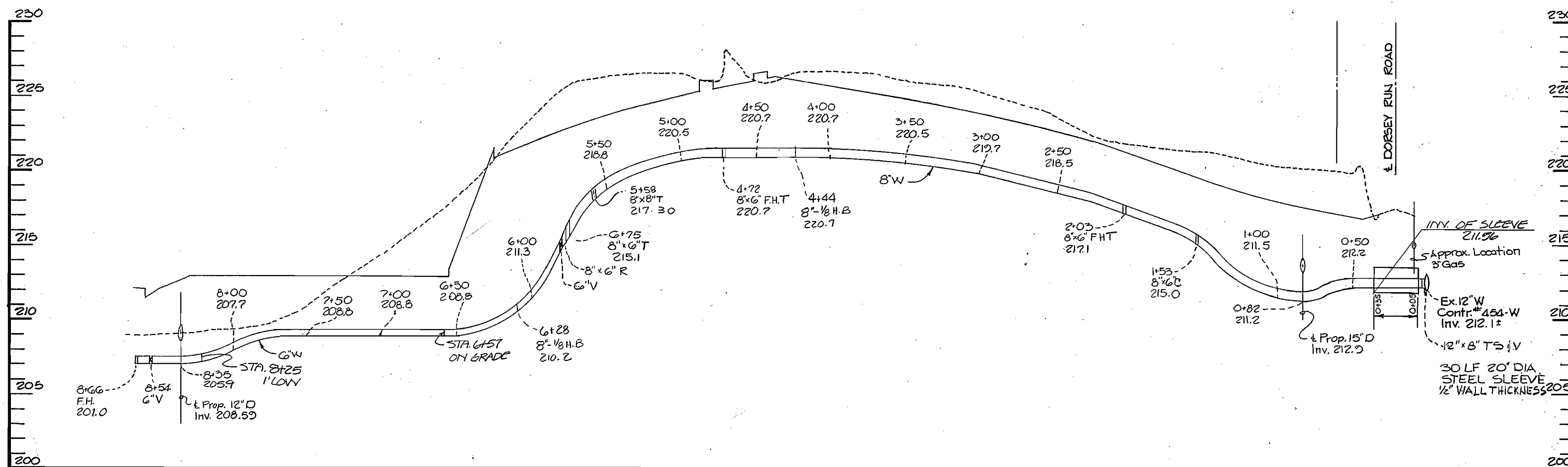
SCALE AS SHOWN
SHEET 1 OF 2

AS BUILT 3/31/87



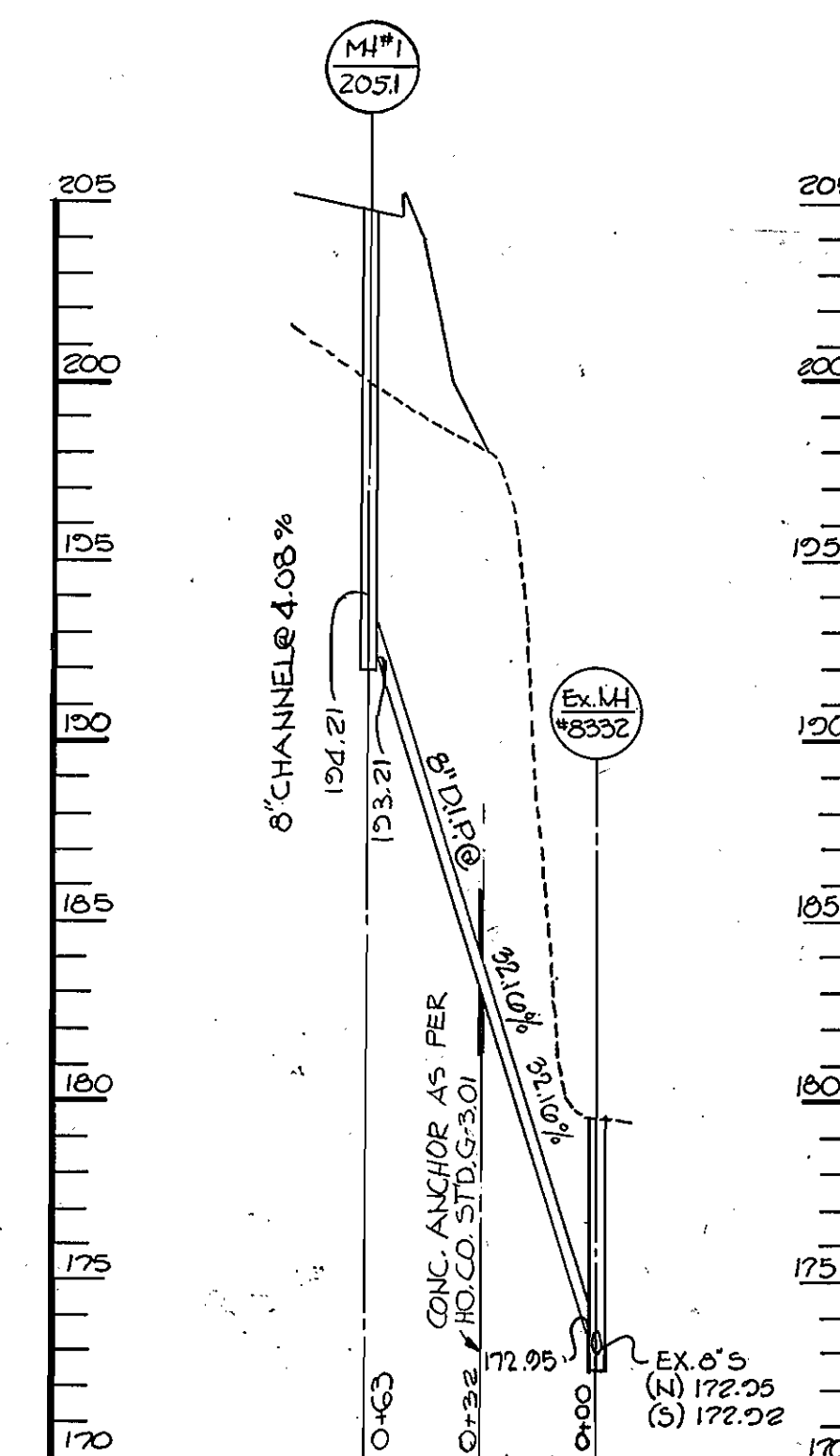
WATER PROFILE

SCALE: HORIZ. 1"=50'
VERT. 1"=5'



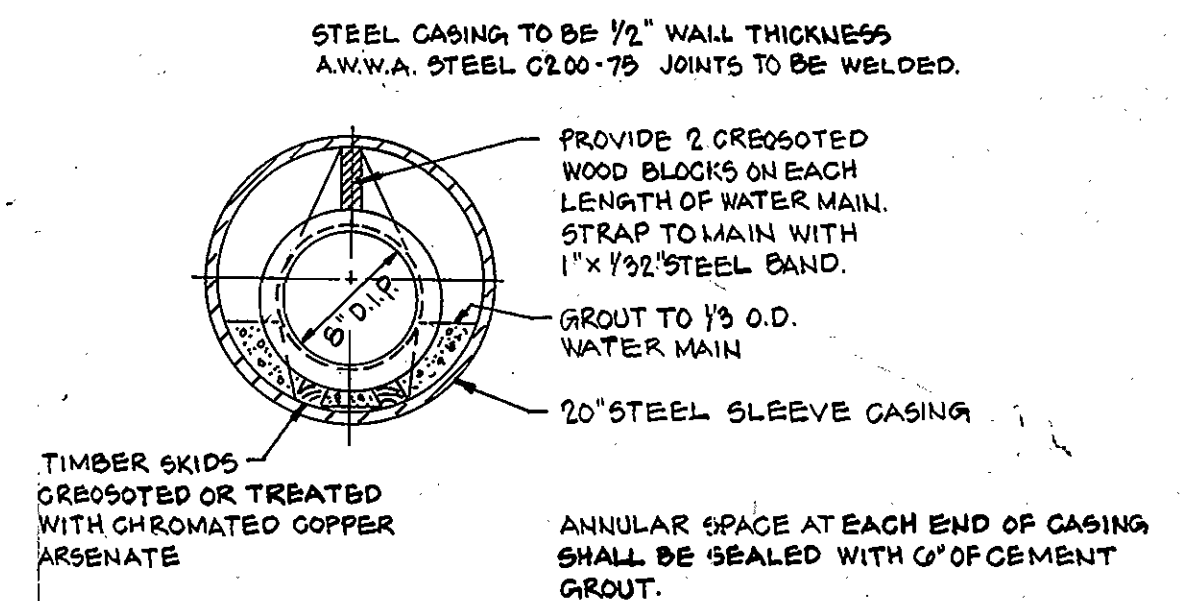
WATER PROFILE

SCALE: HORIZ. 1"=50'
VERT. 1"=5'



SEWER PROFILE

SCALE: HORIZ. 1"=50'
VERT. 1"=5'



DETAIL FOR INSTALLATION OF WATERMAIN IN STEEL SLEEVE
NO SCALE

DEPARTMENT OF PUBLIC WORKS
HOWARD COUNTY, MARYLAND

THE RIEMER GROUP, INC.
3105 NORTH RIDGE ROAD
ELLCOTT CITY, MARYLAND

DES: W.C.W.				
DRN: F.D.M.				
CHK: J.K.B.	CWM	2	ADDED 8" X 8" T	5-10-87
	S.V.W	1	LABELLED 8" X 1/2" H.S.	12-2-86
DATE: 10-2-86	BY	NO.	REVISION	DATE

PROFILES OF
WATER AND SEWER MAINS

DORSEY RUN PARK
6TH ELECTION DISTRICT
HOWARD COUNTY MARYLAND
CONTRACT NO. -24-1550-D

SCALE
AS
SHOWN

SHEET
2 OF 2

AS-BUILT 3/31/87