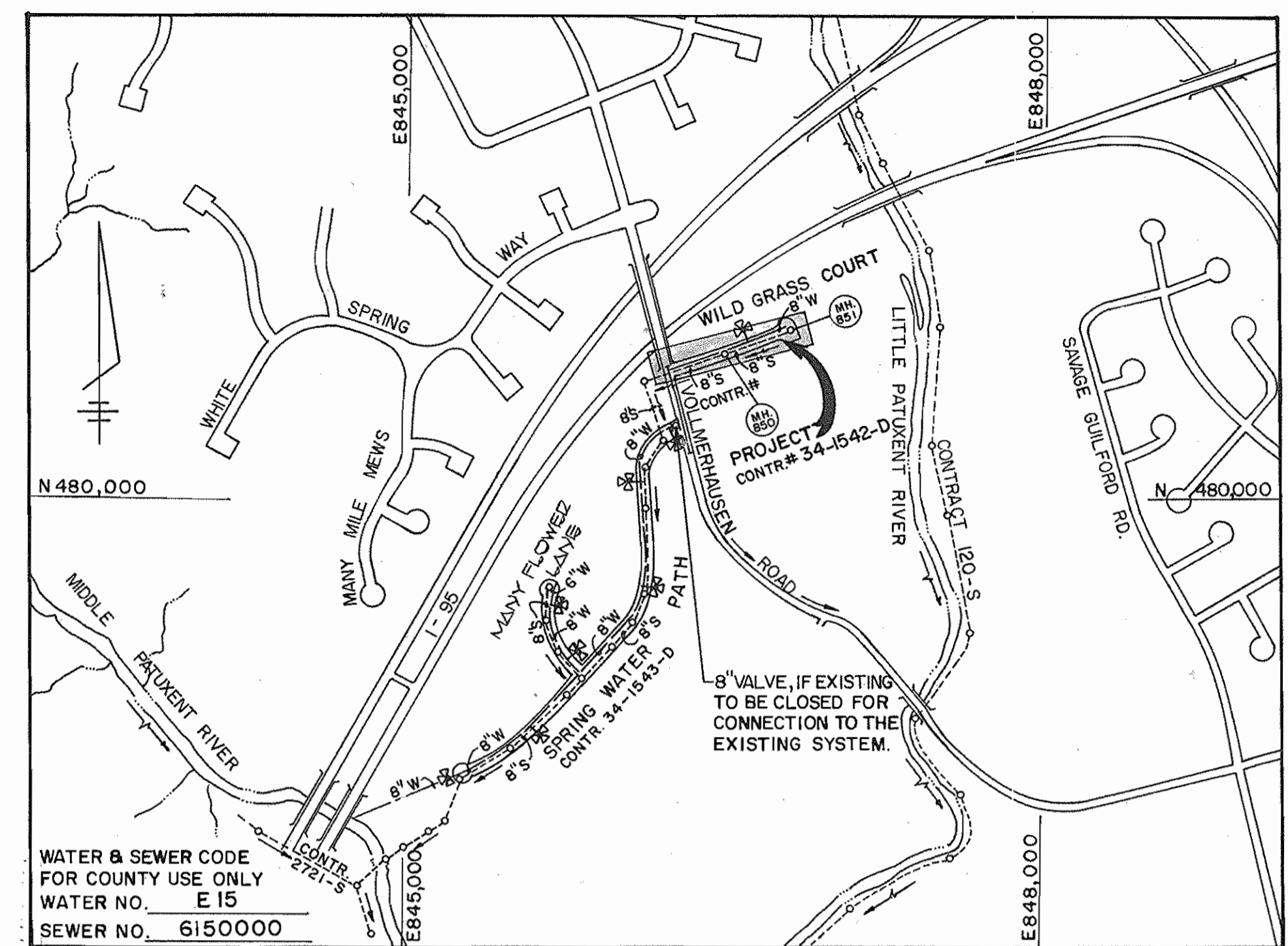
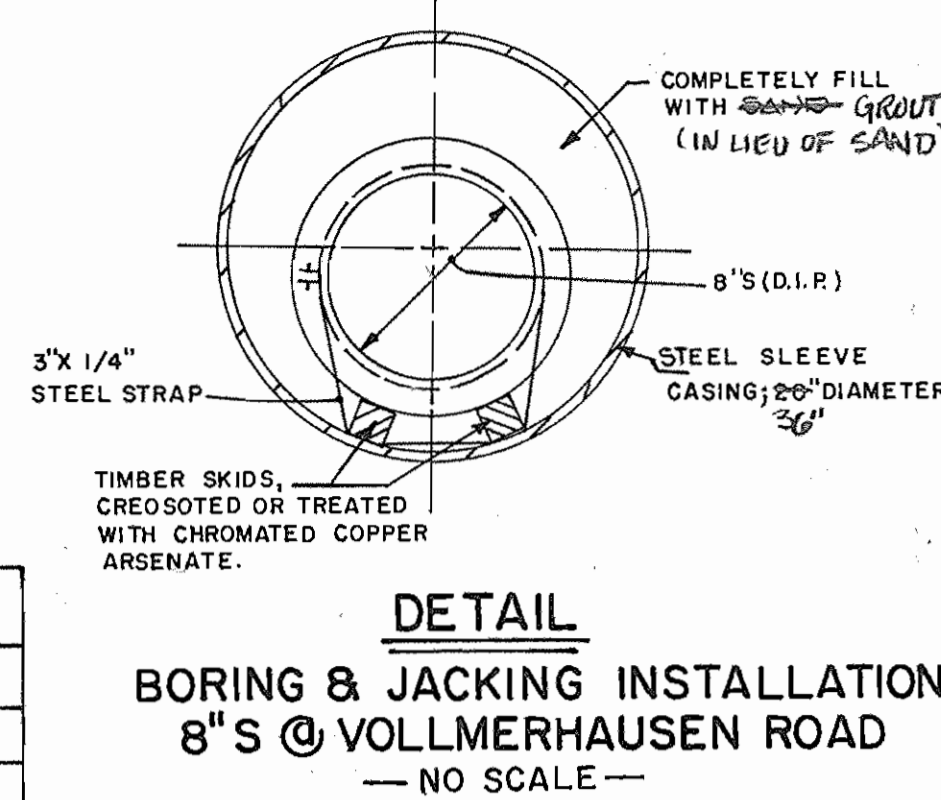


SEWER HOUSE CONNECTIONS INVERT ELEVATIONS AT PROPERTY LINE		
STATION	LOT	ELEVATION
MH #64 TO MH #850		
2+73 (LT.)	LOT #1	328.66
2+73 (RT.)	LOT #19	328.36
3+66 (RT.)	LOT #18	326.66
MH #850 TO MH #851		
0+13 (RT.)	LOT #17	323.01
0+54 (LT.)	LOTS #2 & #3	323.94
1+09 (RT.)	LOTS #5 & #16	323.70
1+42 (RT.)	LOT #14	323.95
1+65 (LT.)	LOT #4	324.67
2+39 (LT.)	LOTS #5 & #6	325.26
2+96 (RT.)	LOTS #12 & #13	325.68
2+99 (LT.)	LOT #7	325.27
@MH. 851; NORTH	LOT #8	325.22
@MH. 851; EAST	LOTS #9 & #10	325.32

MANHOLE TABLE				
NO.	RD. STATION	OFFSET DISTANCE	RIM ELEV.	SLOPE
850	2+31	20' RT.	338.18	
851	IN COURT		332.40	



TYPE OF BUILDING	
RESIDENTIAL	
NUMBER OF LOTS (BUILDABLE)	18
NO. OF WATER HOUSE CONNECTIONS	18
NO. OF SEWER HOUSE CONNECTIONS	18
DRAINAGE AREA	MIDDLE PATUXENT

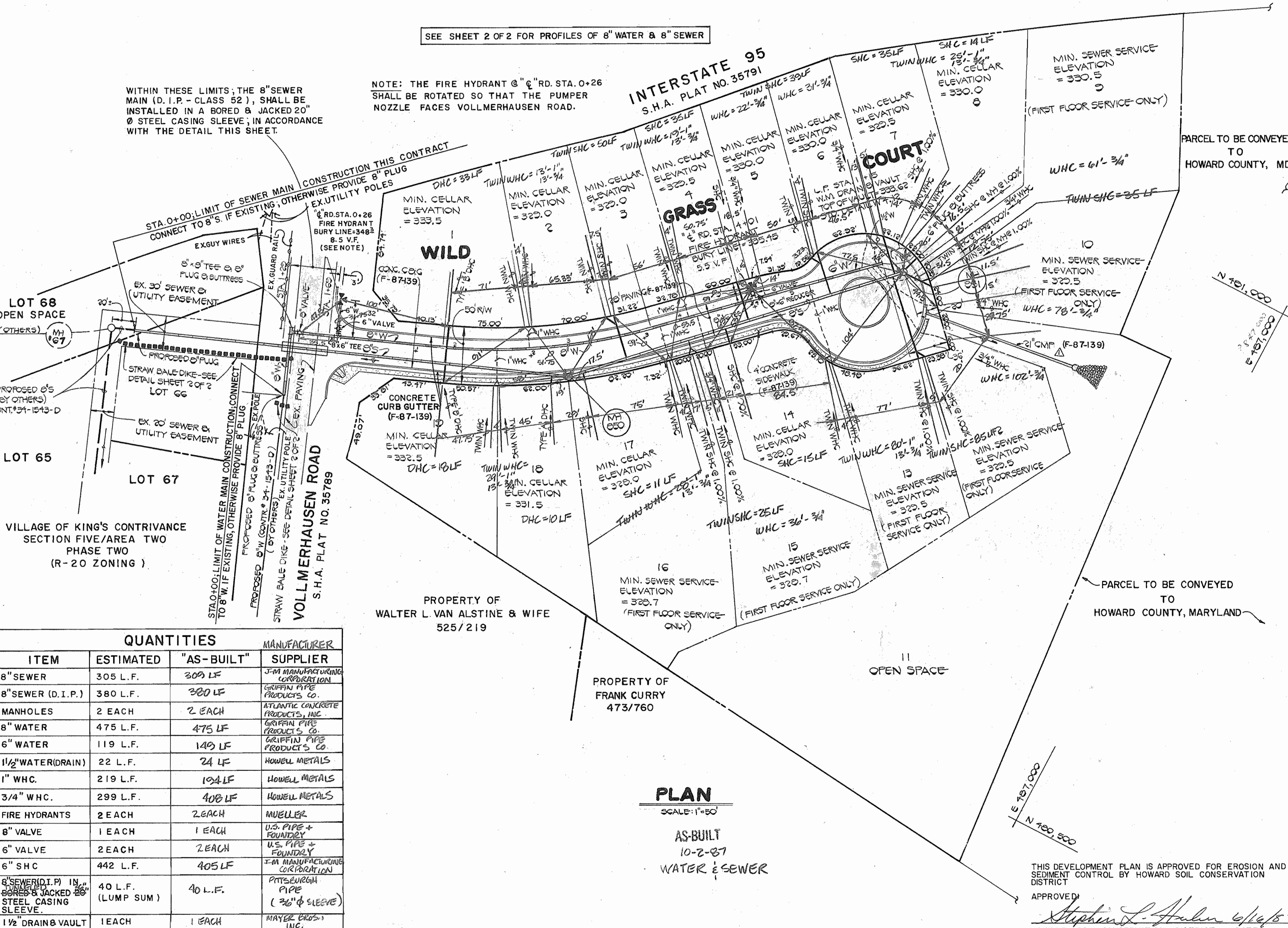
**GENERAL NOTES**

- APPROXIMATE LOCATION OF EXISTING MAINS ARE SHOWN. THE CONTRACTOR SHALL TAKE ALL NECESSARY PRECAUTIONS TO PROTECT EXISTING MAINS AND SERVICES AND MAINTAIN UNINTERRUPTED SUPPLY. ANY DAMAGE INCURRED SHALL BE REPAIRED IMMEDIATELY TO THE SATISFACTION OF THE ENGINEER AT THE CONTRACTOR'S EXPENSE.
- ALL HORIZONTAL CONTROLS ARE BASED ON MARYLAND STATE COORDINATES.
- ALL VERTICAL CONTROLS ARE BASED ON U.S.S. DATUM.
- ALL PIPE ELEVATIONS SHOWN ARE INVERT ELEVATIONS.
- CLEAR ALL UTILITIES BY A MINIMUM OF 6'.

WITHIN THESE LIMITS, THE 8" SEWER MAIN (D.I.P. = CLASS 52) SHALL BE INSTALLED IN A BORED & JACKED 20" Ø STEEL CASING SLEEVE, IN ACCORDANCE WITH THE DETAIL THIS SHEET.

NOTE: THE FIRE HYDRANT @ "E" RD. STA. 0+26 SHALL BE ROTATED SO THAT THE PUMPER NOZZLE FACES VOLLMERHAUSEN ROAD.

SEE SHEET 2 OF 2 FOR PROFILES OF 8" WATER & 8" SEWER



ITEM	ESTIMATED	"AS-BUILT"	MANUFACTURER	SUPPLIER
8" SEWER	305 L.F.	309 LF	J-PA MANUFACTURING CORPORATION	
8" SEWER (D.I.P.)	380 L.F.	380 LF	GRIFFIN PIPE PRODUCTS CO.	
MANHOLES	2 EACH	2 EACH	ATLANTIC CONCRETE PRODUCTS, INC.	
8" WATER	475 L.F.	475 LF	GRIFFIN PIPE PRODUCTS CO.	
6" WATER	119 L.F.	149 LF	GRIFFIN PIPE PRODUCTS CO.	
1 1/2" WATER DRAIN	22 L.F.	24 LF	HOWELL METALS	
1" WHC.	219 L.F.	194 LF	HOWELL METALS	
3/4" WHC.	299 L.F.	408 LF	HOWELL METALS	
FIRE HYDRANTS	2 EACH	2 EACH	MUELLER	
6" VALVE	1 EACH	1 EACH	U.S. PIPE & FOUNDRY	
6" VALVE	2 EACH	2 EACH	U.S. PIPE & FOUNDRY	
6" SHC	442 L.F.	405 LF	J-PA MANUFACTURING CORPORATION	
8" SEWER (D.I.P.) IN BORED & JACKED 20" STEEL CASING SLEEVE	40 L.F. (LUMP SUM)	40 L.F.	PITTSBURGH PIPE (36" Ø SLEEVE)	
1 1/2" DRAIN VAULT	1 EACH	1 EACH	MAYER BROS. & CO. INC.	

PROPERTY OF WALTER L. VAN ALSTINE & WIFE 525/219

PROPERTY OF FRANK CURRY 473/760

THIS DEVELOPMENT PLAN IS APPROVED FOR EROSION AND SEDIMENT CONTROL BY HOWARD COUNTY SOIL CONSERVATION DISTRICT

APPROVED: *Stephen L. Haden* 6/16/87  
HOWARD SOIL CONSERVATION DISTRICT DATE

PLAN REFERENCE NUMBER: F-87-139

SEDIMENT CONTROL MEASURES FOR THIS CONTRACT WILL BE IMPLEMENTED IN ACCORDANCE WITH SECTION 219 OF THE HOWARD COUNTY DESIGN MANUAL AND STANDARDS AND SPECIFICATIONS FOR SOIL EROSION AND SEDIMENT CONTROL IN DEVELOPING AREAS AND ALSO AS SHOWN ON THE GRADING AND SEDIMENT CONTROL PLAN. REVIEWED FOR HOWARD COUNTY SOIL CONSERVATION DISTRICT AND MEETS TECHNICAL REQUIREMENTS.

*J. Haden* 6/16/87  
U.S. SOIL CONSERVATION SERVICE DATE

CONTRACT NO. 34-1542-D  
VILLAGE OF KING'S CONTRIVANCE SECTION FIVE, AREA 3  
WATER & SEWER EXTENSIONS HOWARD COUNTY, MARYLAND

DEPARTMENT OF PUBLIC WORKS  
HOWARD COUNTY, MARYLAND

*John F. Noma* 6-23-87  
DIRECTOR OF PUBLIC WORKS DATE

*Robert B. Bunn* 6-19-87  
CHIEF, BUREAU OF UTILITIES DATE

*James M. Fisher* 6/23/87  
CHIEF, BUREAU OF ENGINEERING DATE

*Michael H. Fisher* 6-23-87  
CHIEF, LAND DEVELOPMENT DIVISION DATE

FISHER, COLLINS AND CARTER, INC. #9757  
CONSULTING ENGINEERS AND LAND SURVEYORS  
8388 COURT AVENUE  
ELLCOTT CITY, MARYLAND 21043

*Terrell A. Fisher*  
TERRELL A. FISHER DATE

DES: P.W.K.  
DRN: A.S.  
CHK: T.A.F.  
DATE: 03/9/87

D.A.N. Δ REVIS: LOCATION OF 2" C.M.F. STORM DRAIN. 6-15-87  
BY NO. REVISION DATE

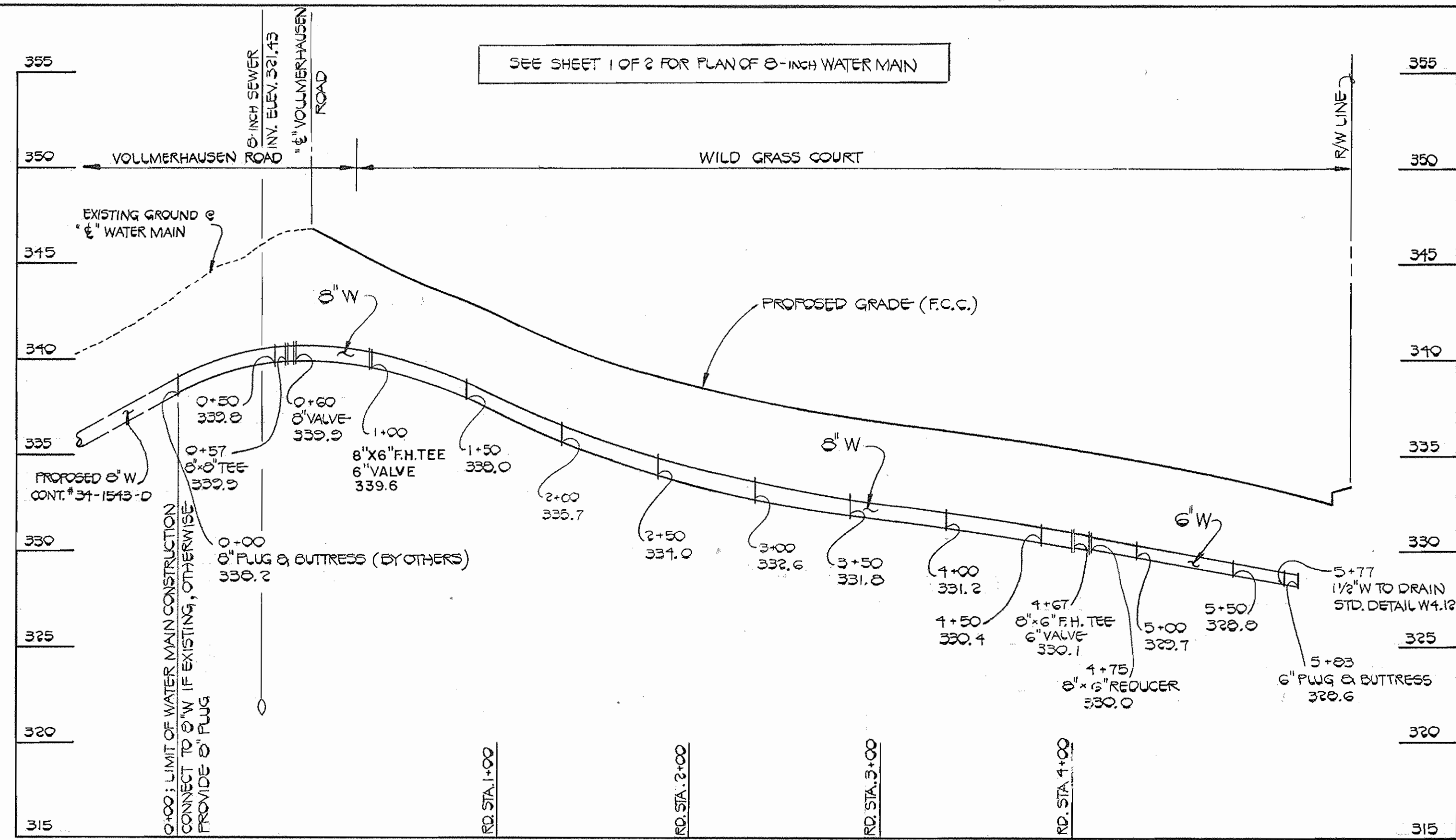
PLAN  
WATER AND SEWER MAINS

600' SCALE MAP NO. 42 BLOCK NO.

VILLAGE OF KING'S CONTRIVANCE SECTION FIVE AREA THREE  
LOTS 1-19  
CONTRACT NO. 34-1542-D  
SIXTH ELECTION DISTRICT  
HOWARD COUNTY, MARYLAND

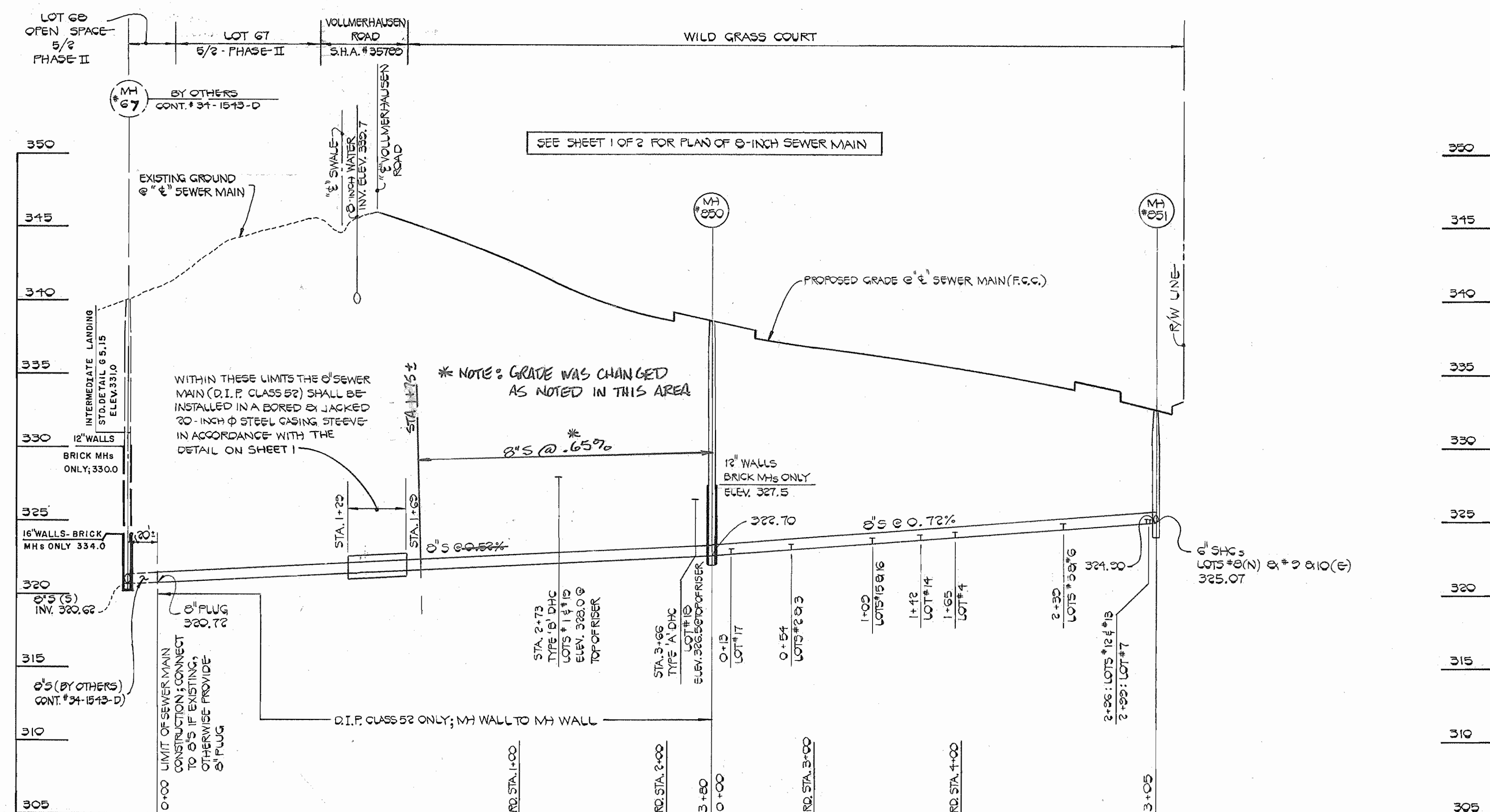
SCALE AS SHOWN  
SHEET 1 OF 2

AS-BUILT 10-2-87



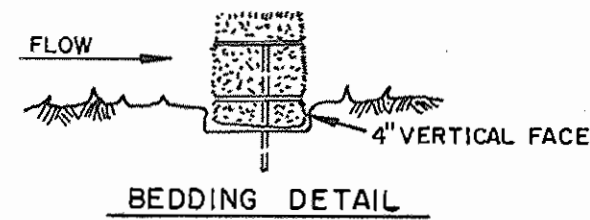
**PROFILE: 8" WATER MAIN IN WILD GRASS COURT**

SCALE: 1" = 50' HOR.  
1" = 5' VERT.

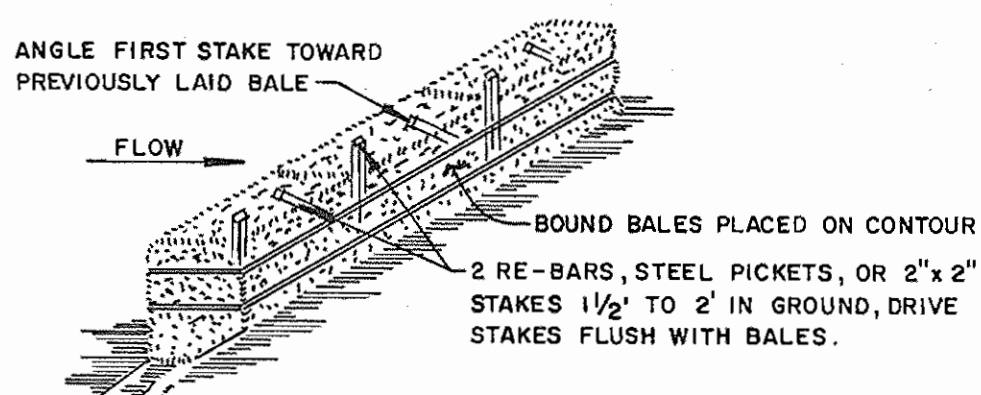


**PROFILE: 8" INCH SEWER MAIN IN WILD GRASS COURT**

SCALE: 1" = 50' HOR.  
1" = 5' VERT.



**BEDDING DETAIL**



**ANCHORING DETAIL  
STRAW BALE DIKE**

NOTE: SEE SHEET 1 FOR LOCATION OF STRAW BALE DIKE

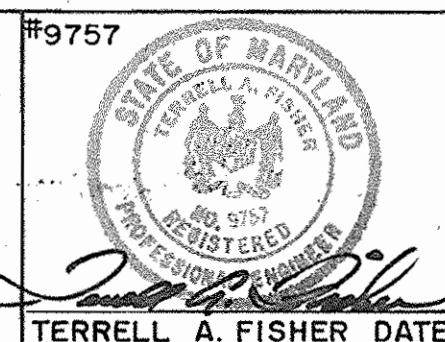
- BALES SHALL BE PLACED AT THE TOE OF A SLOPE OR ON THE CONTOUR AND IN A ROW WITH ENDS TIGHTLY ABUTTING THE ADJACENT BALES.
- EACH BALE SHALL BE EMBEDDED IN THE SOIL A MINIMUM OF 4 INCHES, AND PLACED SO THE BINDINGS ARE HORIZONTAL.
- BALES SHALL BE SECURELY ANCHORED IN-PLACE BY EITHER TWO STAKES OR RE-BARS DRIVEN THROUGH THE BALE. THE FIRST STAKE IN EACH BALE SHALL BE DRIVEN TOWARD THE PREVIOUSLY LAID BALE AT AN ANGLE TO FORCE THE BALES TOGETHER. STAKES SHALL BE DRIVEN FLUSH WITH THE BALE.
- INSPECTION SHALL BE FREQUENT AND REPAIR REPLACEMENT SHALL BE MADE PROMPTLY AS NEEDED.
- BALES SHALL BE REMOVED WHEN THEY HAVE SERVED THEIR USEFULNESS SO AS NOT TO BLOCK OR IMPEDE STORM FLOW OR DRAINAGE.

DEPARTMENT OF PUBLIC WORKS  
HOWARD COUNTY, MARYLAND

*Robert M. Brunner*  
DIRECTOR OF PUBLIC WORKS  
DATE: 6-19-87  
CHIEF, BUREAU OF UTILITIES

FISHER, COLLINS, AND CARTER, INC.

CONSULTING ENGINEERS AND LAND SURVEYORS  
8388 COURT AVENUE  
ELLICOTT CITY, MARYLAND 21043



DES: P.W.K.  
DRN: J.O.  
CHK: T.A.F.  
DATE: 03/9/87

PROFILES  
WATER AND SEWER MAINS

VILLAGE OF KINGS CONTRIVANCE  
SECTION FIVE AREA THREE  
LOTS 1-19  
CONTRACT NO. 34-1542-D  
SIXTH ELECTION DISTRICT  
HOWARD COUNTY, MARYLAND

SCALE  
AS  
SHOWN

SHEET  
2 OF 2

AS-BUILT 10-2-87