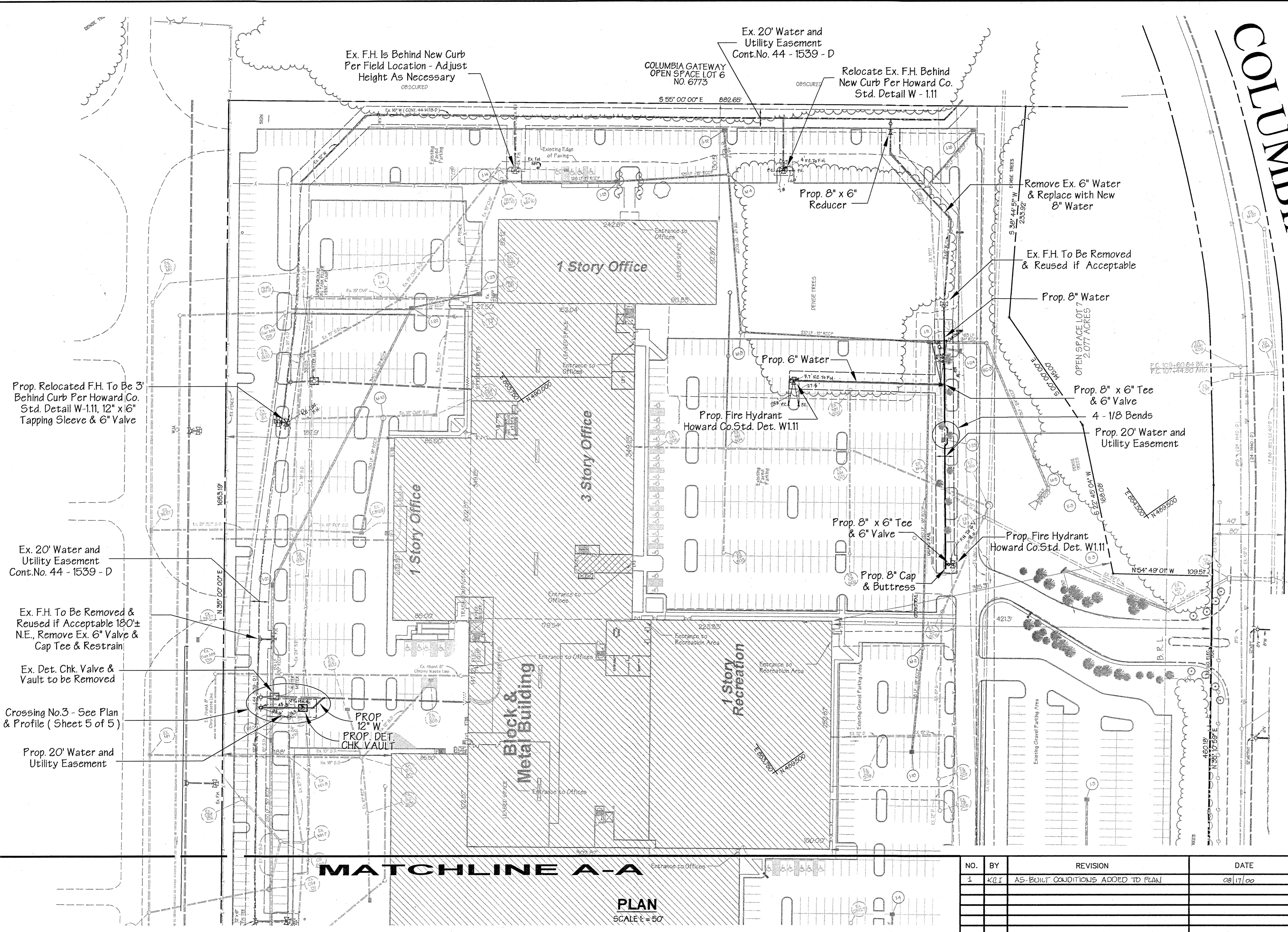


COLUMBIA GATEWAY DR.



SEDIMENT CONTROL MEASURES FOR THIS CONTRACT WILL BE IMPLEMENTED IN ACCORDANCE WITH SECTION 219 OF THE STANDARD SPECIFICATIONS, SDP 99-65

THE DEVELOPMENT PLAN IS APPROVED FOR SOIL EROSION AND SEDIMENT CONTROL BY THE HOWARD SOIL CONSERVATION DISTRICT.

APPROVED :
HOWARD SOIL CONSERVATION DISTRICT DATE

REVIEWED FOR HOWARD SOIL CONSERVATION DISTRICT AND MEETS TECHNICAL REQUIREMENTS.

U.S. SOIL CONSERVATION SERVICE DATE

NO.	BY	REVISION	DATE
1	K.O.F.	AS-BUILT CONDITIONS ADDED TO PLAN	08/17/00

OWNER
COLUMBIA / 95 GROUP L.P.
7125 COLUMBIA GATEWAY DRIVE
COLUMBIA, MARYLAND 21046

DEVELOPER
PREFERRED REAL ESTATE INVESTMENTS, INC.
555 NORTH LANE, SUITE 6101
CONSHOCKEN, PA. 19428
(610) 834-1969

DEPARTMENT OF PUBLIC WORKS
HOWARD COUNTY, MARYLAND

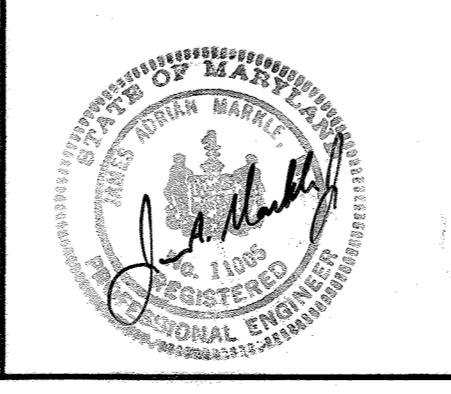
Robert M. Benner 3-29-99
CHIEF, BUREAU OF UTILITIES DATE

DEPARTMENT OF PLANNING & ZONING
HOWARD COUNTY, MARYLAND

John P. ... 2/21/99
CHIEF, DEVELOPMENT ENGINEERING DIVISION DATE

GWS

GEORGE W. STEPHENS, JR. AND ASSOCIATES, INC.
Civil Engineers and Land Surveyors
658 Kenilworth Drive, Suite 100
Towson Maryland 21204
(410) 825-8120



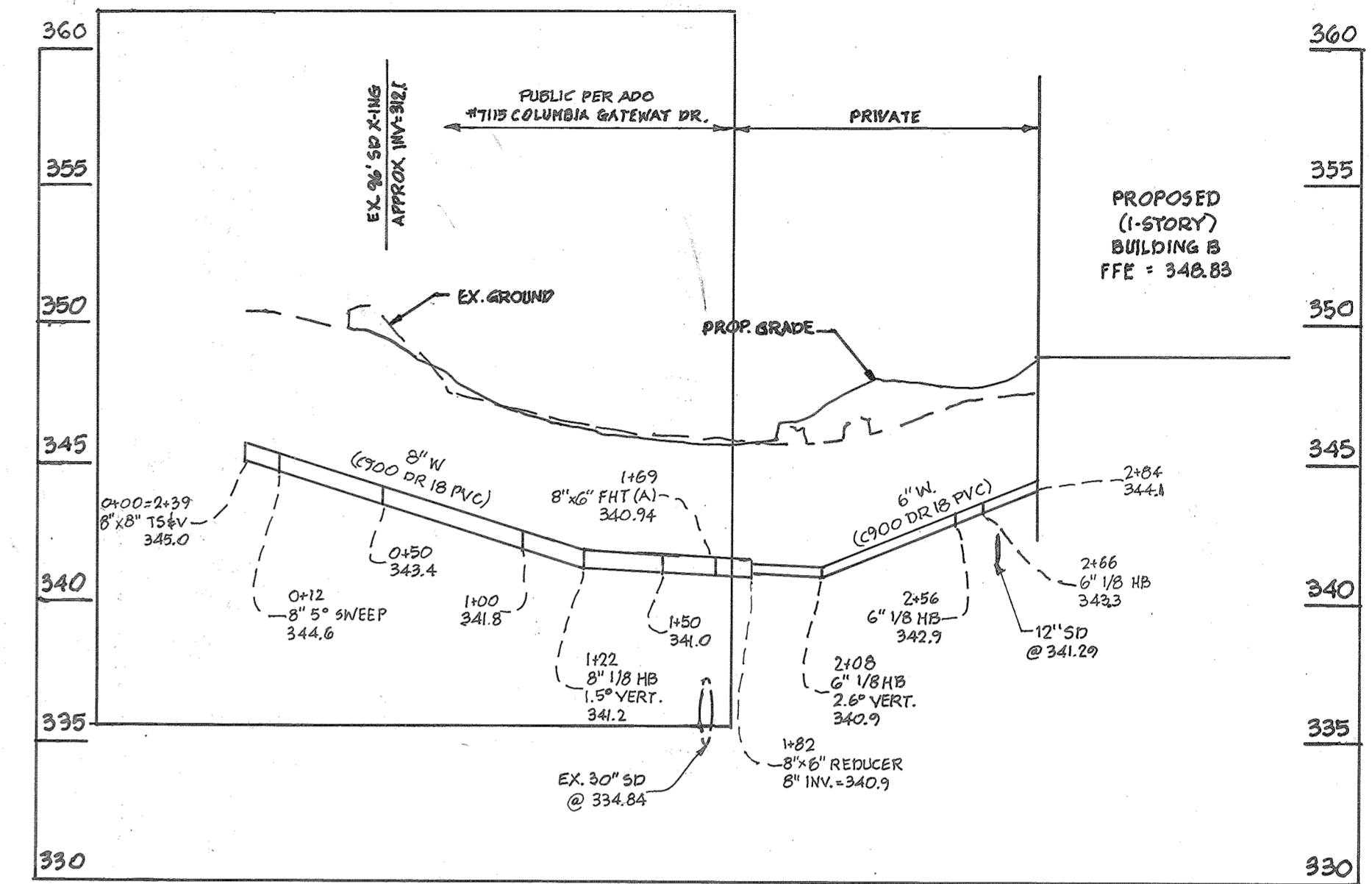
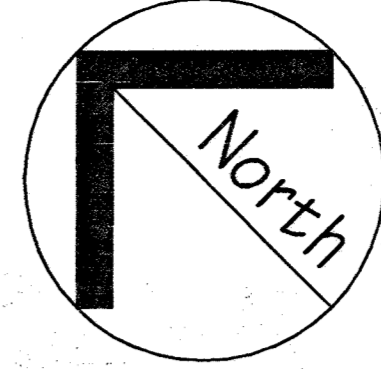
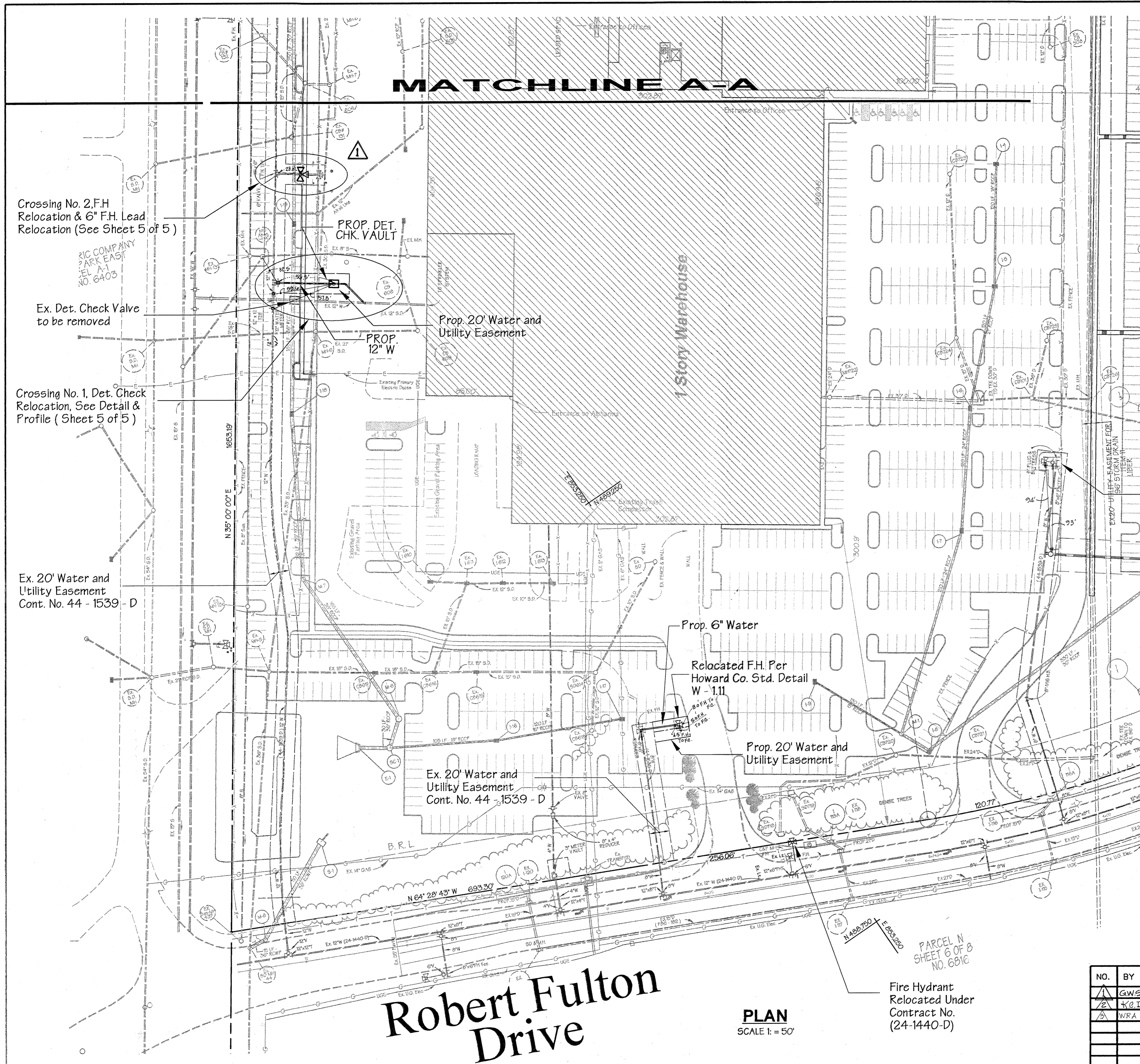
DESIGNED : KMW, EMT
DRAFTED : EMT
CHECKED : TNW

PLAN WATER AND SEWER MAINS

CONTRACT NO. 44 -1539 - D - A
600 SCALE MAP NO. 42/43 BLOCK NO.

RENAISSANCE AT COLUMBIA GATEWAY
PARCEL "L"
ROBERT FULTON DRIVE
CONTRACT NO. 44-1539-D-A

HOWARD COUNTY, MARYLAND ELECTION DISTRICT #6
FEBRUARY 10, 1999 SHEET 2A OF 5



WATER PROFILE
SCALE: HOR. 1" = 50'
VER. 1" = 5'

SEDIMENT CONTROL MEASURES FOR THIS CONTRACT WILL BE IMPLEMENTED IN ACCORDANCE WITH SECTION 219 OF THE STANDARD SPECIFICATIONS, SDP 99-65

THE DEVELOPMENT PLAN IS APPROVED FOR SOIL EROSION AND SEDIMENT CONTROL BY THE HOWARD SOIL CONSERVATION DISTRICT.

APPROVED :
HOWARD SOIL CONSERVATION DISTRICT DATE

REVIEWED FOR HOWARD SOIL CONSERVATION DISTRICT AND MEETS TECHNICAL REQUIREMENTS.

U.S. SOIL CONSERVATION SERVICE DATE

NO.	BY	REVISION	DATE
1	GWS	RELOCATE EXIST. FH @ CROSSING NO. 2	8/30/99
2	K.E.I.	AS BUILT CONDITIONS ADDED TO PLAN	8/17/00
3	W.R.A.	ADDED AS BUILT PREPARATION FOR A.D.O.	8/17/01

OWNER
COLUMBIA / 95 GROUP L.P.
7125 COLUMBIA GATEWAY DRIVE
COLUMBIA, MARYLAND 21046

DEVELOPER
PREFERRED REAL ESTATE INVESTMENTS, INC.
555 NORTH LANE, SUITE 6101
CONSHOCKEN, PA. 19428
(610) 834-1969

Robert Fulton Drive

PLAN
SCALE 1" = 50'

Fire Hydrant Relocated Under Contract No. (24-1440-D)

DEPARTMENT OF PUBLIC WORKS
HOWARD COUNTY, MARYLAND

DEPARTMENT OF PLANNING & ZONING
HOWARD COUNTY, MARYLAND



GEORGE W. STEPHENS, JR. AND ASSOCIATES, INC.
Civil Engineers and Land Surveyors
658 Kenilworth Drive, Suite 100
Towson Maryland 21204
(410) 825-8120



DESIGNED : KMW, EMT
DRAFTED : EMT
CHECKED : TNW

PLAN WATER AND SEWER MAINS

CONTRACT NO. 44 - 1539 - D - A

600 SCALE MAP NO. 42/43

BLOCK NO.

RENAISSANCE AT COLUMBIA GATEWAY PARCEL "L"

ROBERT FULTON DRIVE
CONTRACT NO. 44-1539-D-A

HOWARD COUNTY, MARYLAND
ELECTION DISTRICT #6

FEBRUARY 10, 1999
SHEET 3A OF 5

Ralph Beaman 3-29-99
CHIEF, BUREAU OF UTILITIES DATE

W. J. ... 3/21/99
CHIEF, DEVELOPMENT ENGINEERING DIVISION DATE

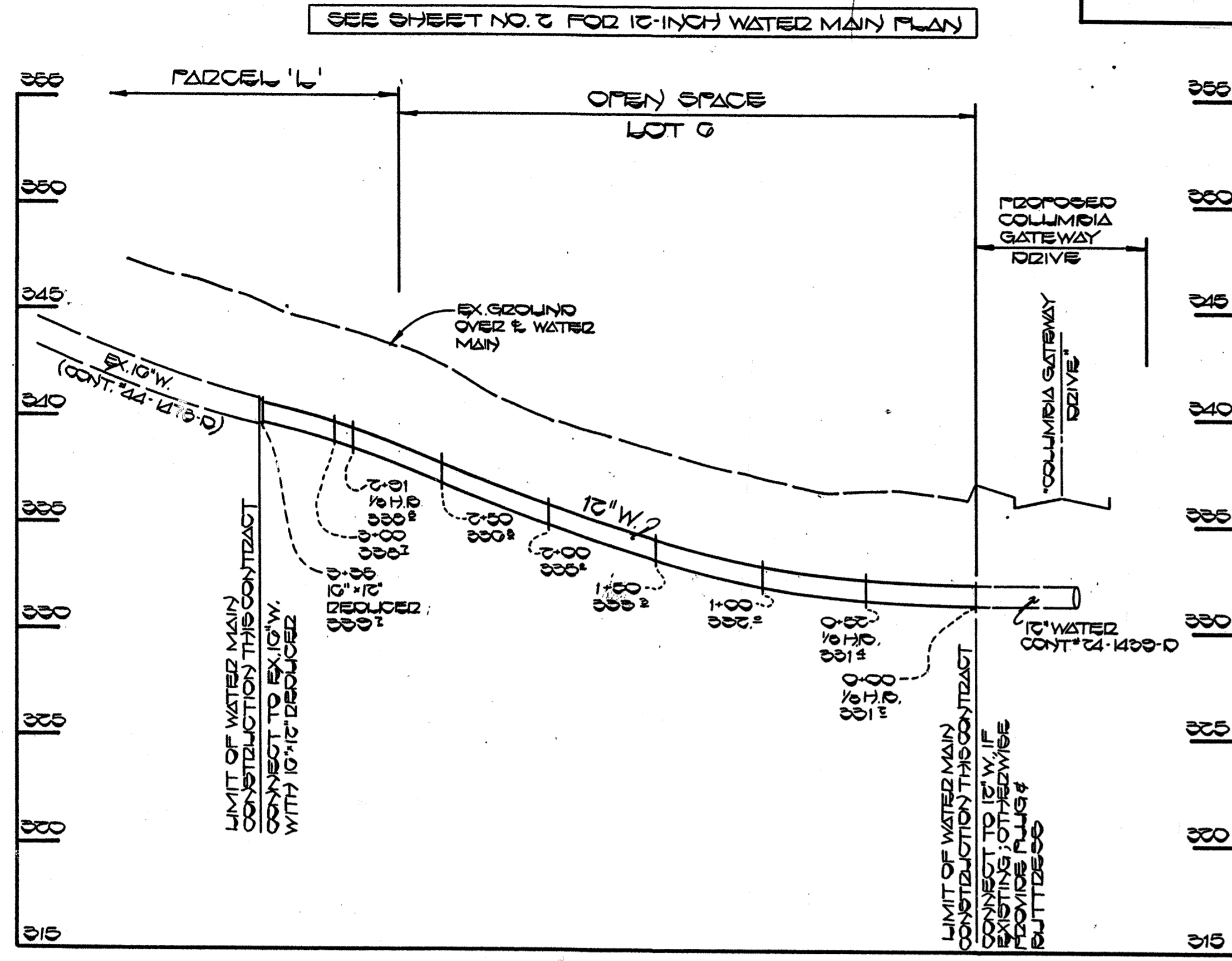
SEDIMENT CONTROL MEASURES FOR THIS CONTRACT WILL BE IMPLEMENTED IN ACCORDANCE WITH SECTION 219 OF THE STANDARD SPECIFICATIONS, SDP 99-65

THE DEVELOPMENT PLAN IS APPROVED FOR SOIL EROSION AND SEDIMENT CONTROL BY THE HOWARD SOIL CONSERVATION DISTRICT.

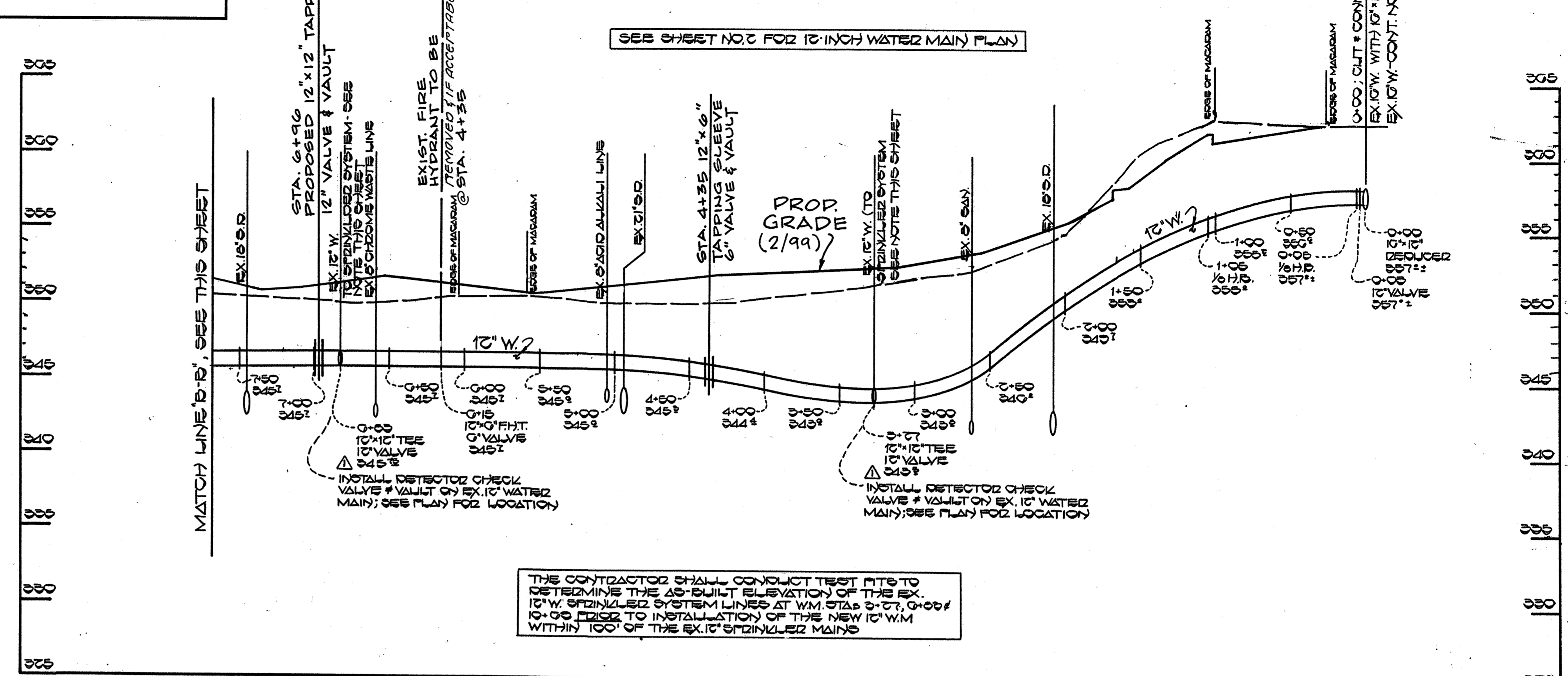
REVIEWED FOR HOWARD SOIL CONSERVATION DISTRICT AND MEETS TECHNICAL REQUIREMENTS.

APPROVED :
HOWARD SOIL CONSERVATION DISTRICT DATE

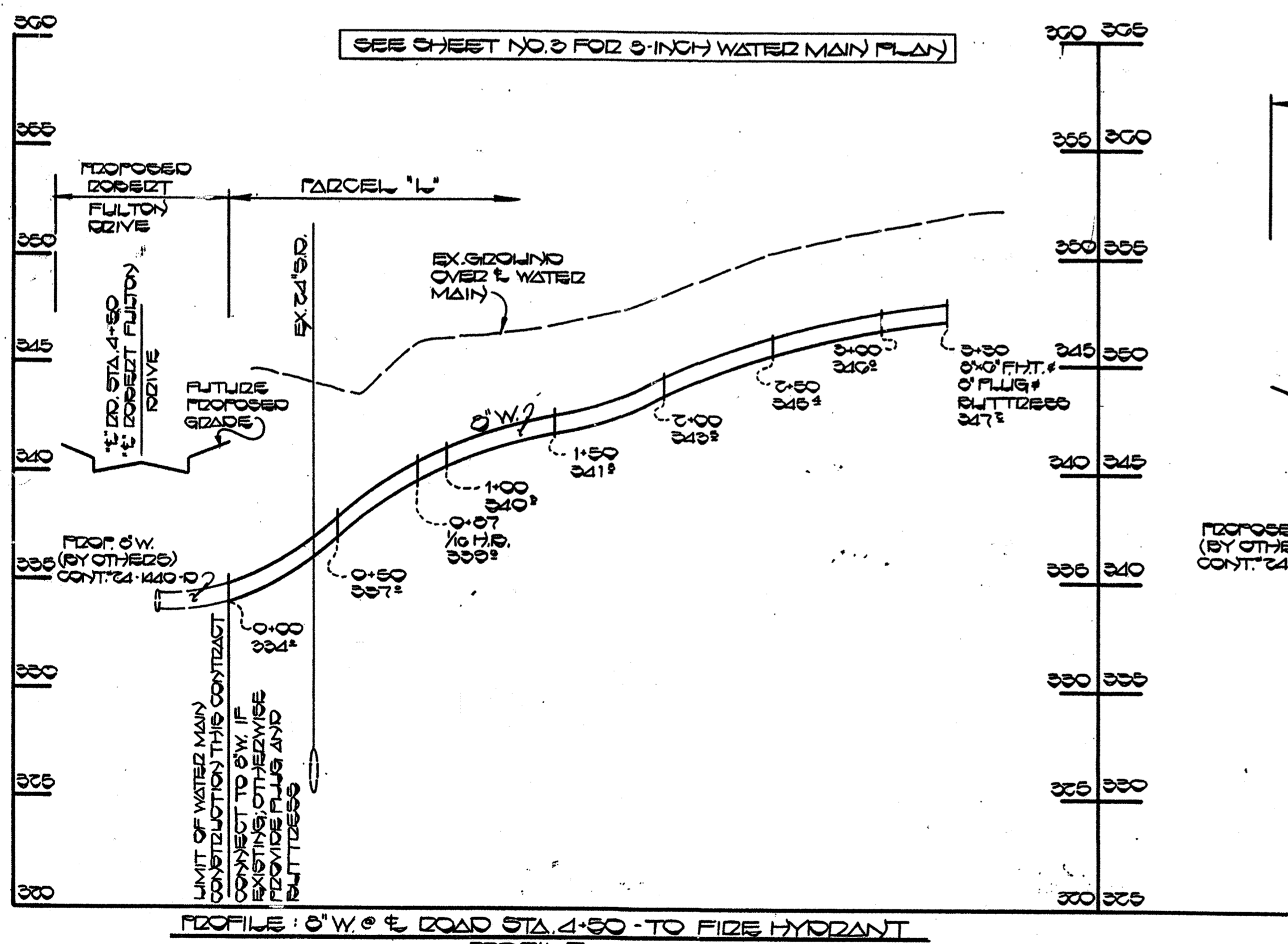
U.S. SOIL CONSERVATION SERVICE DATE



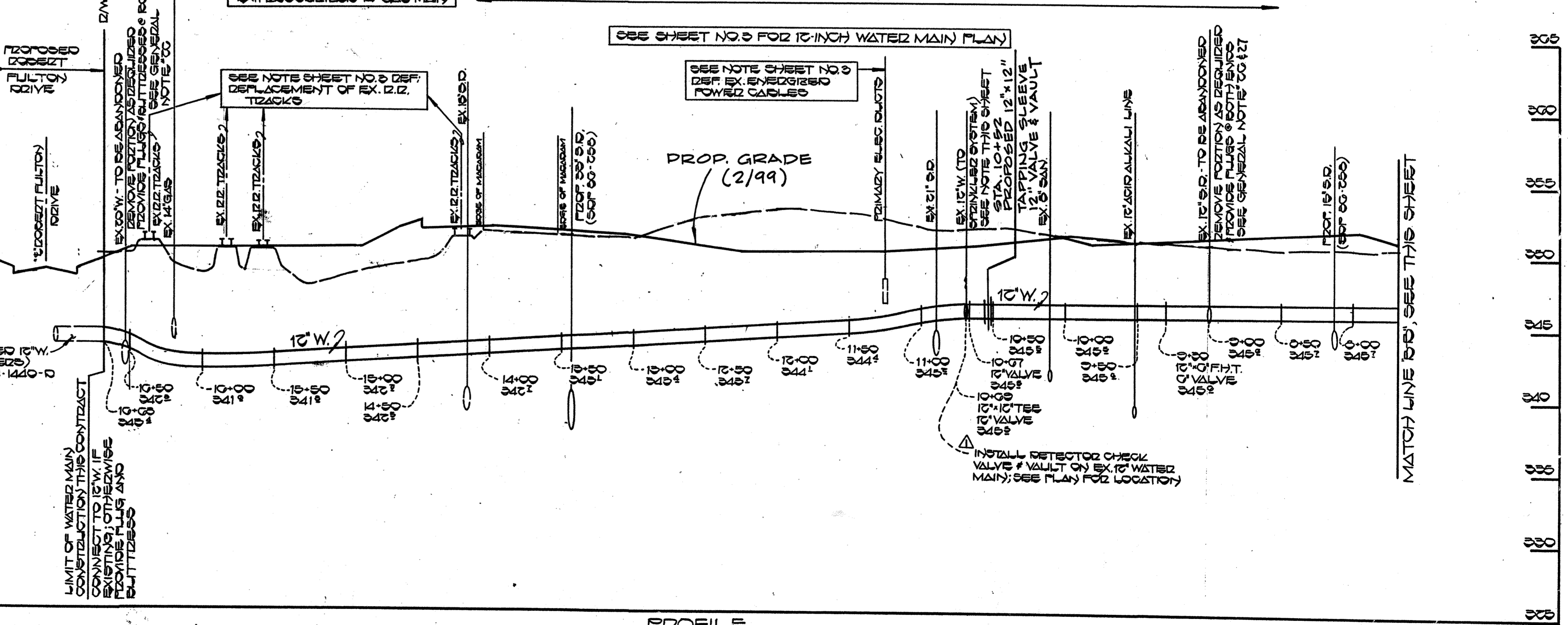
PROFILE: 12" W. PROPOSED COLUMBIA GATEWAY DRIVE TO EX. 12" W.
SCALE: HOR. 1" = 50'
VERT. 1" = 5'



PROFILE
SCALE: HOR. 1" = 50'
VERT. 1" = 5'



PROFILE: 6" W. & ROAD STA. 4+50 TO FIRE HYDRANT
SCALE: HOR. 1" = 50'
VERT. 1" = 5'



PROFILE
SCALE: HOR. 1" = 50'
VERT. 1" = 5'

DEPARTMENT OF PUBLIC WORKS
HOWARD COUNTY, MARYLAND
3-29-99
DATE

DEPARTMENT OF PLANNING & ZONING
HOWARD COUNTY, MARYLAND
3-29-99
DATE

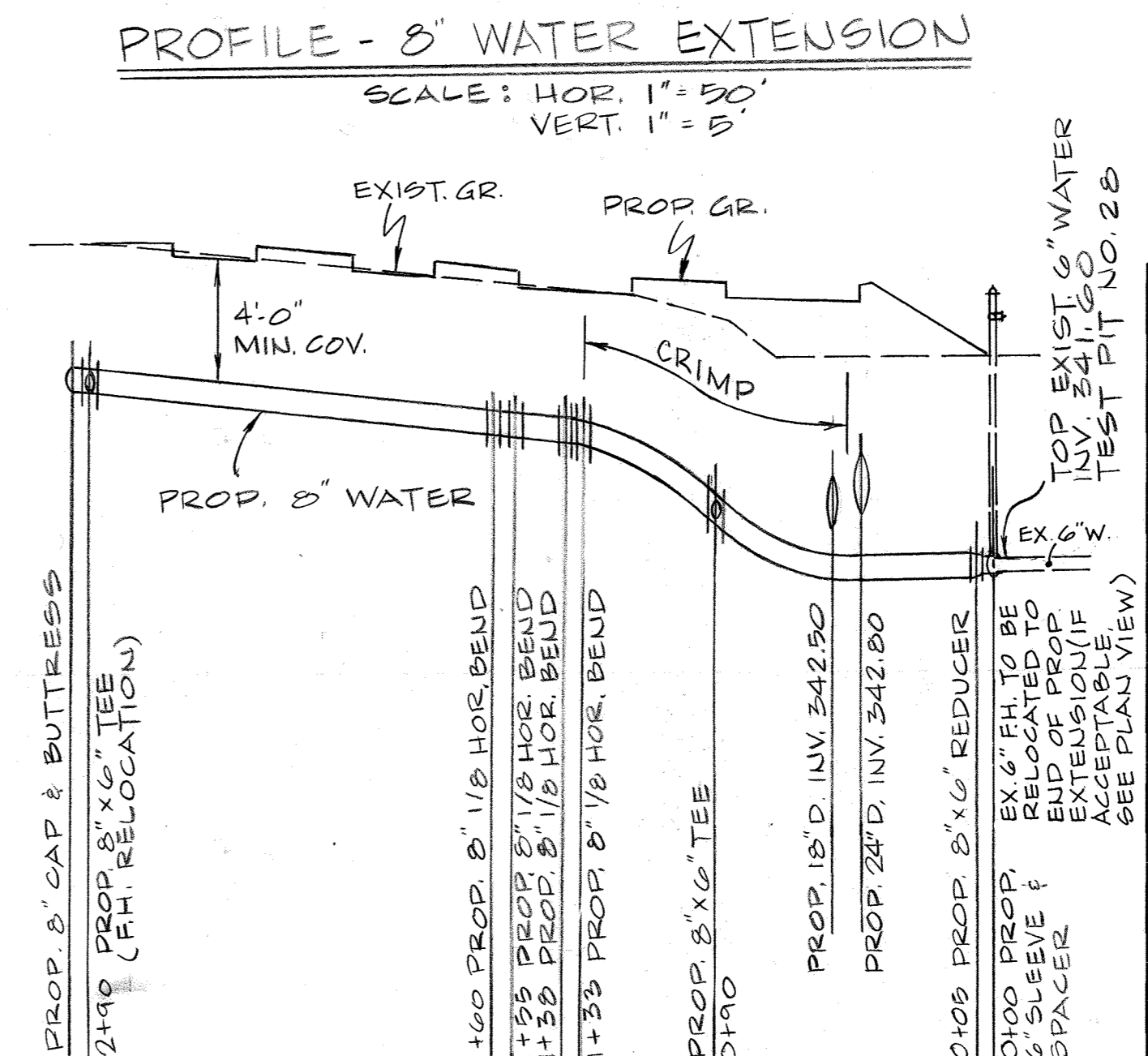
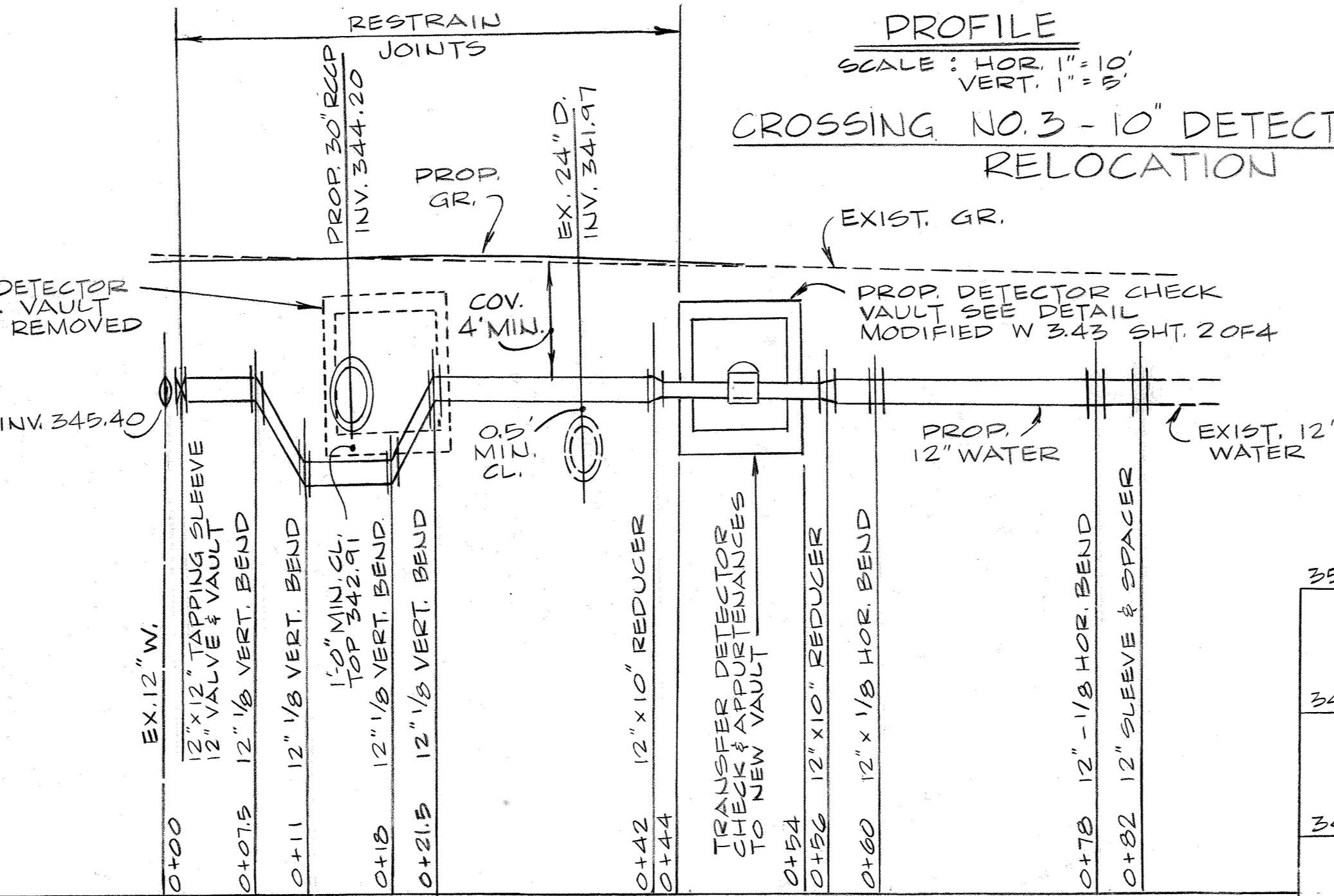
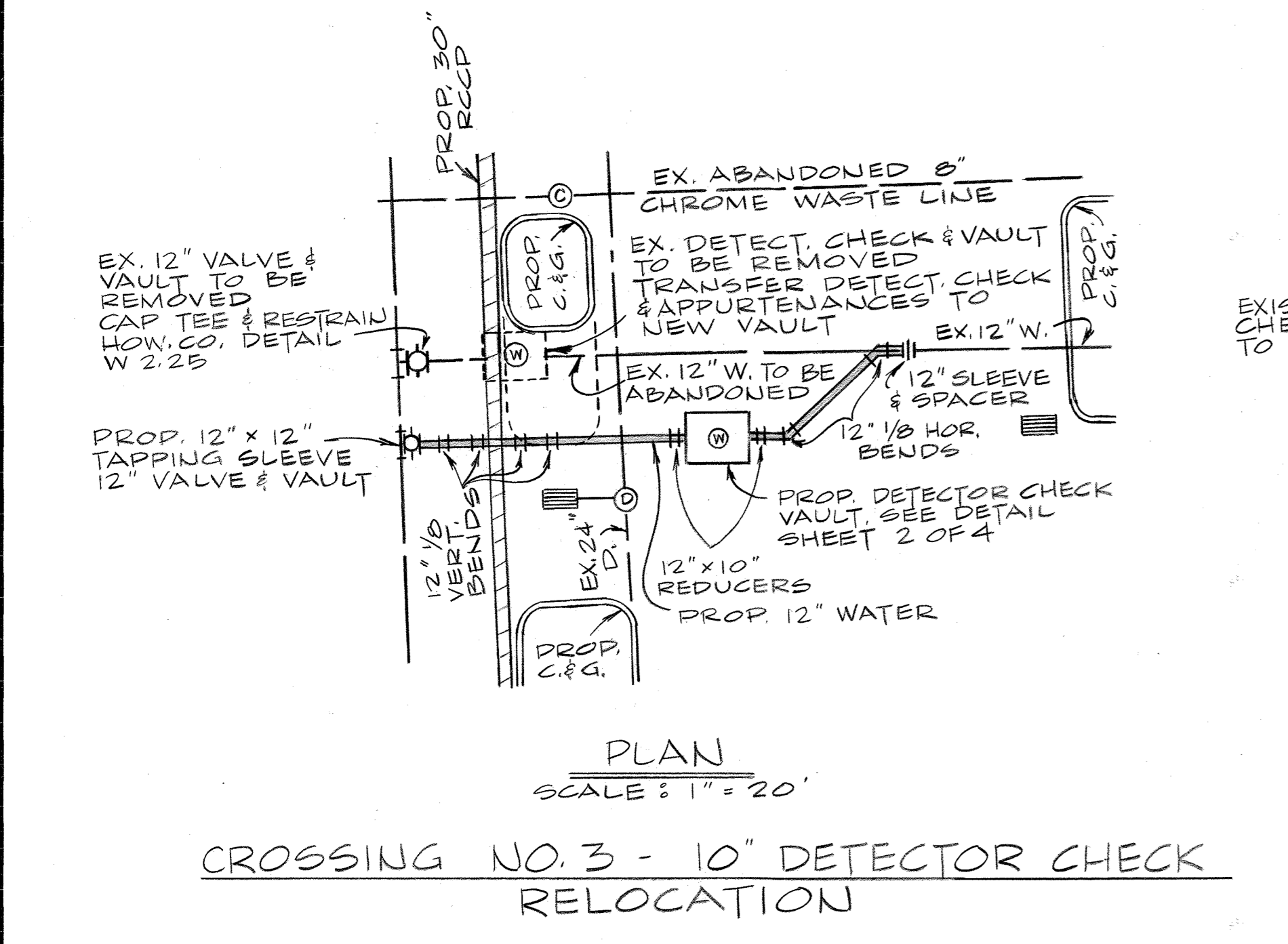
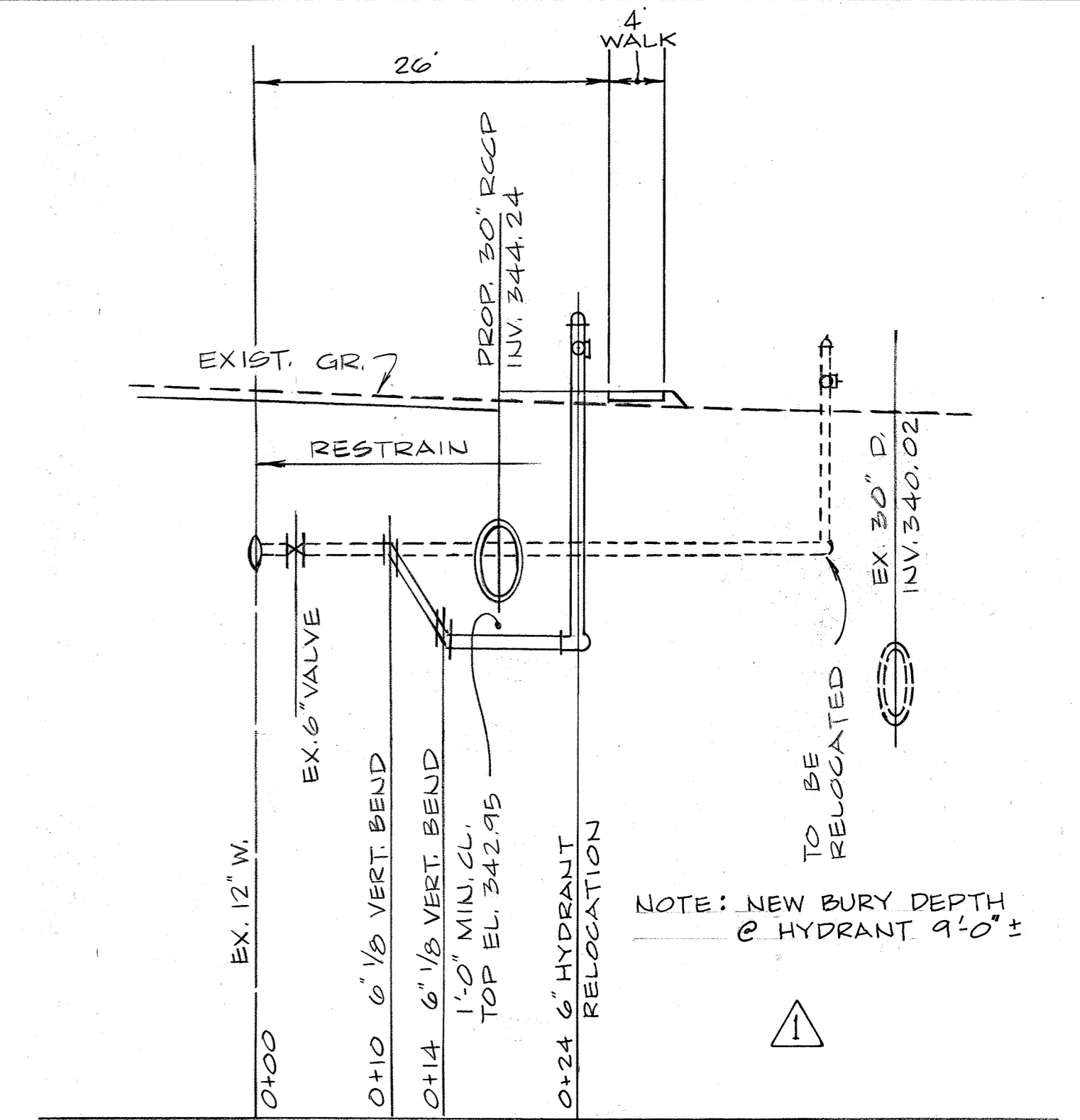
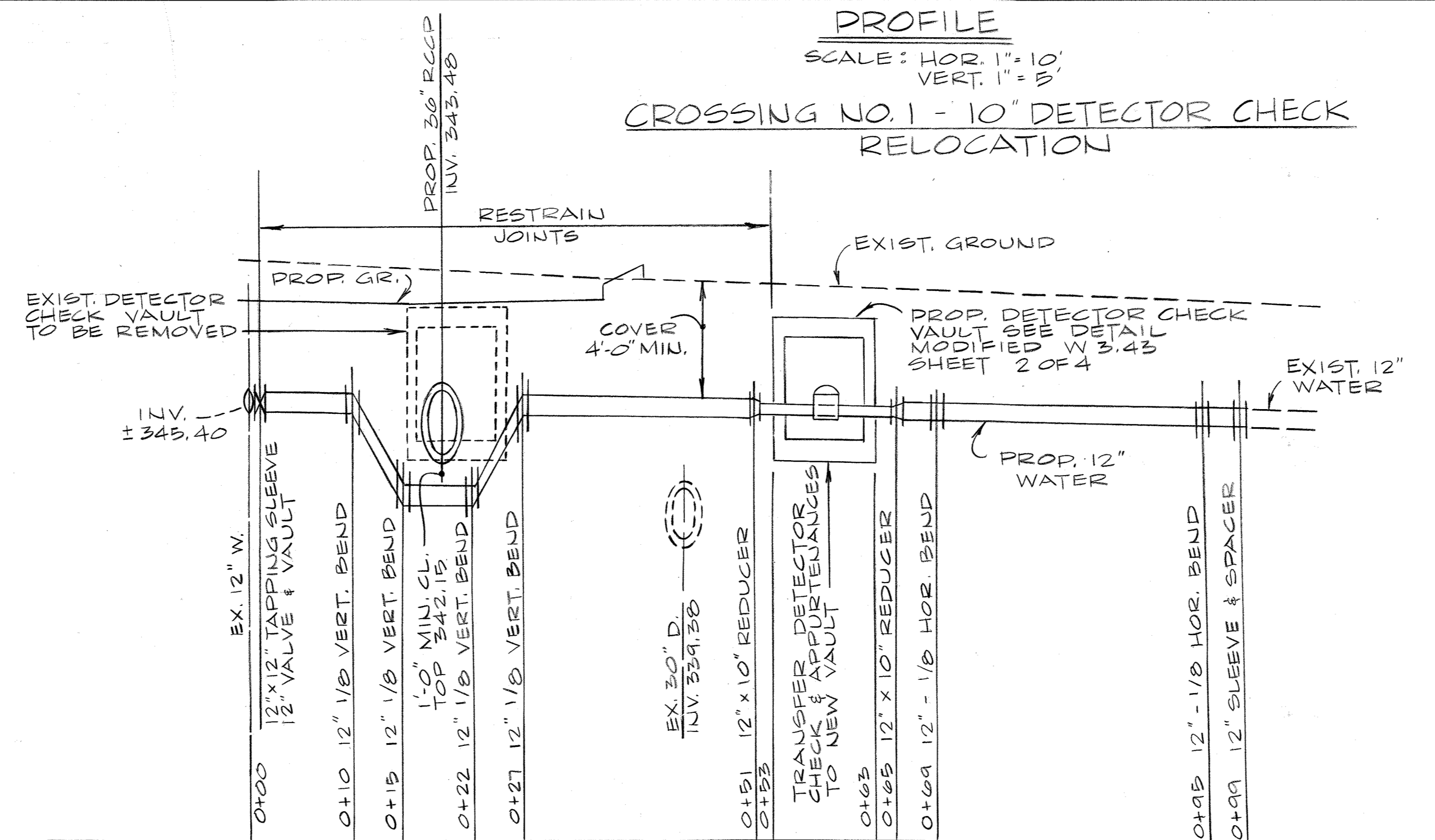
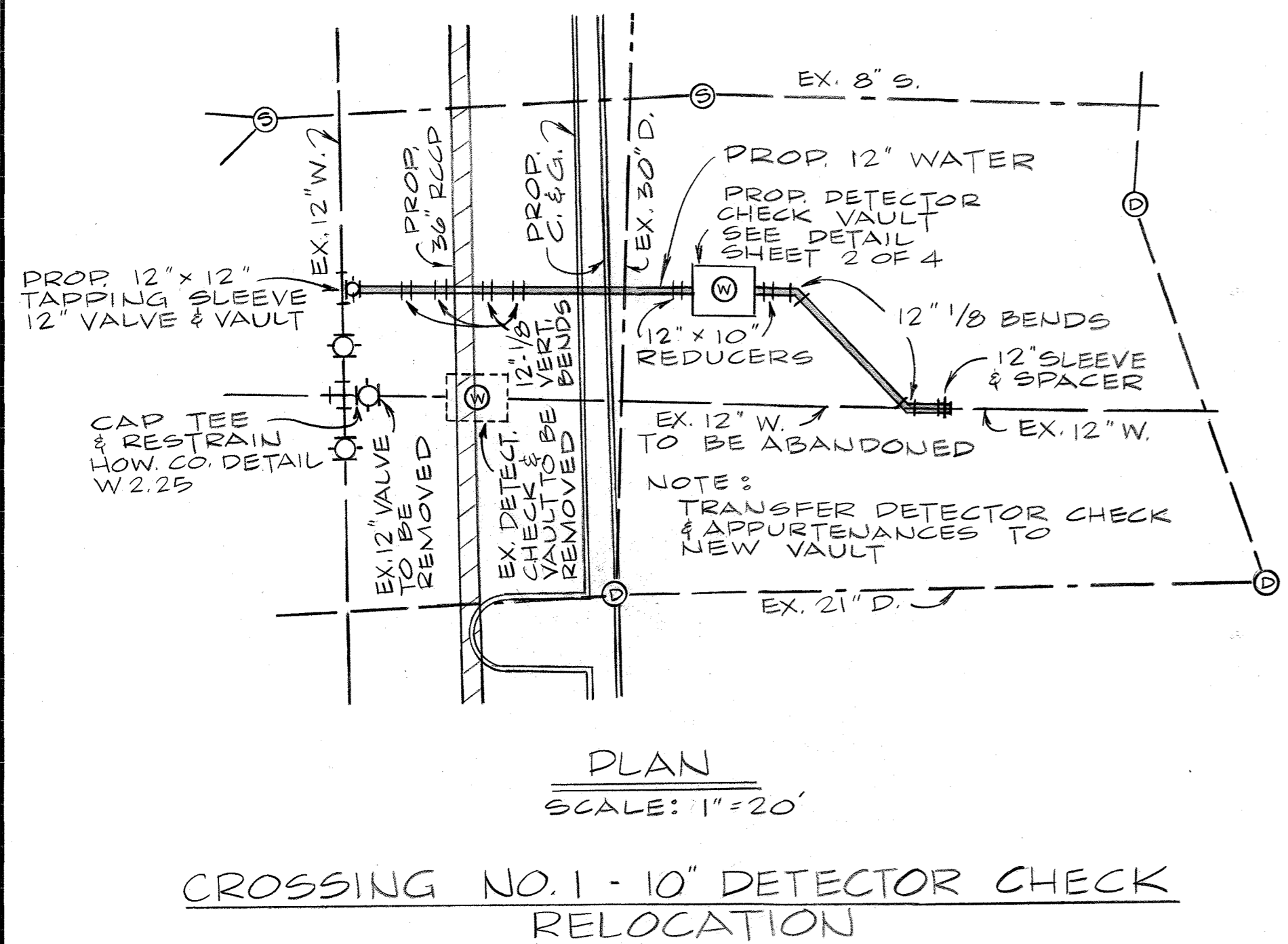
GEORGE W. STEPHENS, JR. AND ASSOCIATES, INC.
Civil Engineers and Land Surveyors
658 Kenilworth Drive, Suite 100
Towson Maryland 21284
(410) 825-8120



DESIGNED : GJD
DRAFTED : GJD
CHECKED : TNW

PROFILE WATER AND SEWER MAINS
CONTRACT NO. 44-1539-D-A
600 SCALE MAP NO. 42/43
BLOCK NO.

COLUMBIA GATEWAY PARCEL "L" RENAISSANCE AT COLUMBIA GATEWAY
CONTRACT NO. 44-1539-D-A
HOWARD COUNTY, MARYLAND ELECTION DISTRICT #6
JANUARY 14, 1999 SHEET 4A OF 5



SEDIMENT CONTROL MEASURES FOR THIS CONTRACT WILL BE IMPLEMENTED IN ACCORDANCE WITH SECTION 219 OF THE STANDARD SPECIFICATIONS, SDP 99-65

THE DEVELOPMENT PLAN IS APPROVED FOR SOIL EROSION AND SEDIMENT CONTROL BY THE HOWARD SOIL CONSERVATION DISTRICT.

APPROVED: HOWARD SOIL CONSERVATION DISTRICT DATE

REVIEWED FOR HOWARD SOIL CONSERVATION DISTRICT AND MEETS TECHNICAL REQUIREMENTS.

U.S. SOIL CONSERVATION SERVICE DATE

NO.	BY	REVISION	DATE
1	GWS	RELOCATE EXIST. FH @ CROSSING NO. 2	8/20/99

OWNER
COLUMBIA / 95 GROUP L.P.
7125 COLUMBIA GATEWAY DRIVE
COLUMBIA, MARYLAND 21046

DEVELOPER
PREFERRED REAL ESTATE INVESTMENTS, INC.
555 NORTH LANE, SUITE 6101
CONSHOCKEN, PA. 19428
(610) 834-1969

DEPARTMENT OF PUBLIC WORKS
HOWARD COUNTY, MARYLAND

Robert M. Berger 3-29-99
CHIEF, BUREAU OF UTILITIES DATE

DEPARTMENT OF PLANNING & ZONING
HOWARD COUNTY, MARYLAND

John P. ... 3/31/99
CHIEF, DEVELOPMENT ENGINEERING DIVISION DATE

GWS
GEORGE W. STEPHENS, JR. AND ASSOCIATES, INC.
Civil Engineers and Land Surveyors
658 Kenilworth Drive, Suite 100
Towson Maryland 21204
(410) 825-8120



DESIGNED: GJD
DRAFTED: GJD
CHECKED: TNW

PROFILE WATER AND SEWER MAINS

CONTRACT NO. 600 SCALE MAP NO. 42/43 BLOCK NO. _____

COLUMBIA GATEWAY PARCEL "L" RENAISSANCE AT COLUMBIA GATEWAY
CONTRACT NO. 44-1539-D

HOWARD COUNTY, MARYLAND ELECTION DISTRICT #6

ANJUNARY 14, 1999 SHEET 5 OF 5