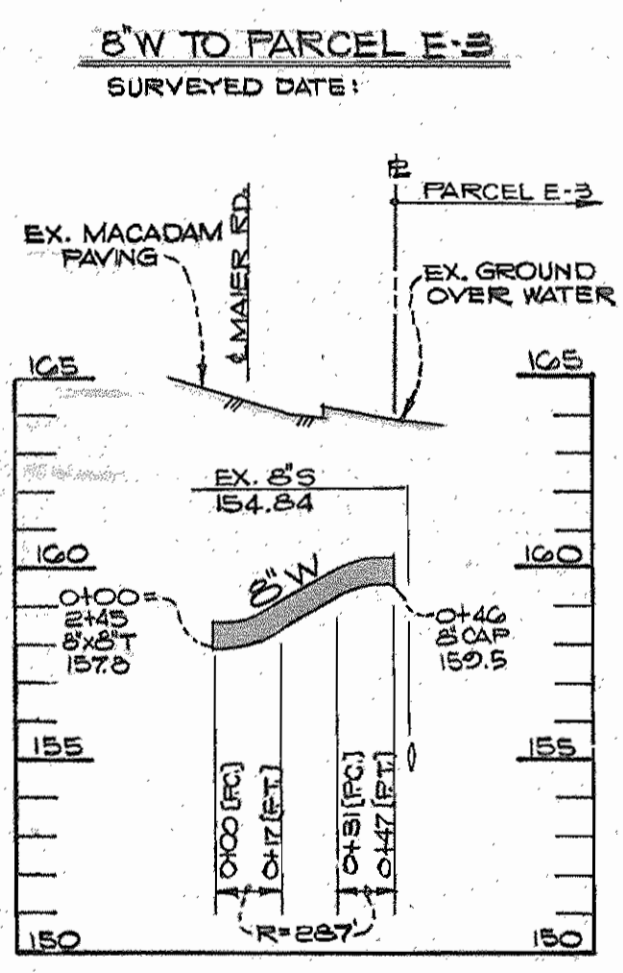
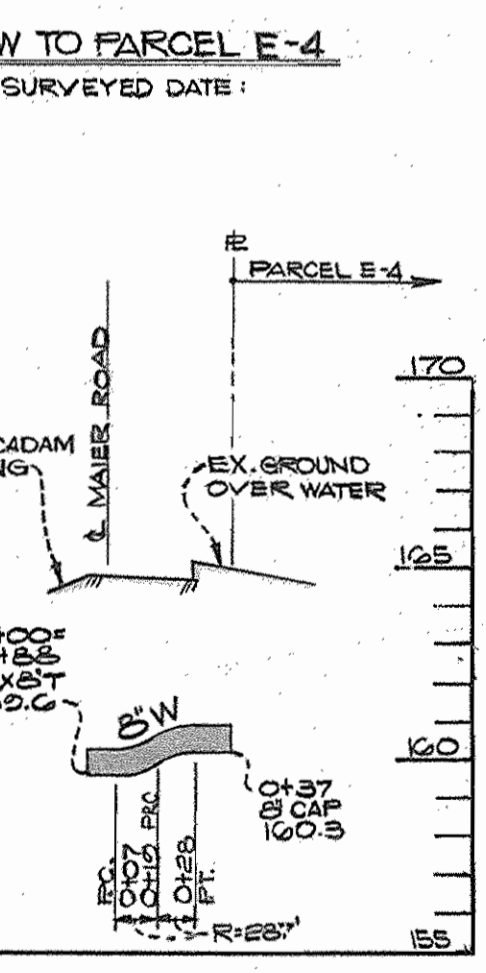
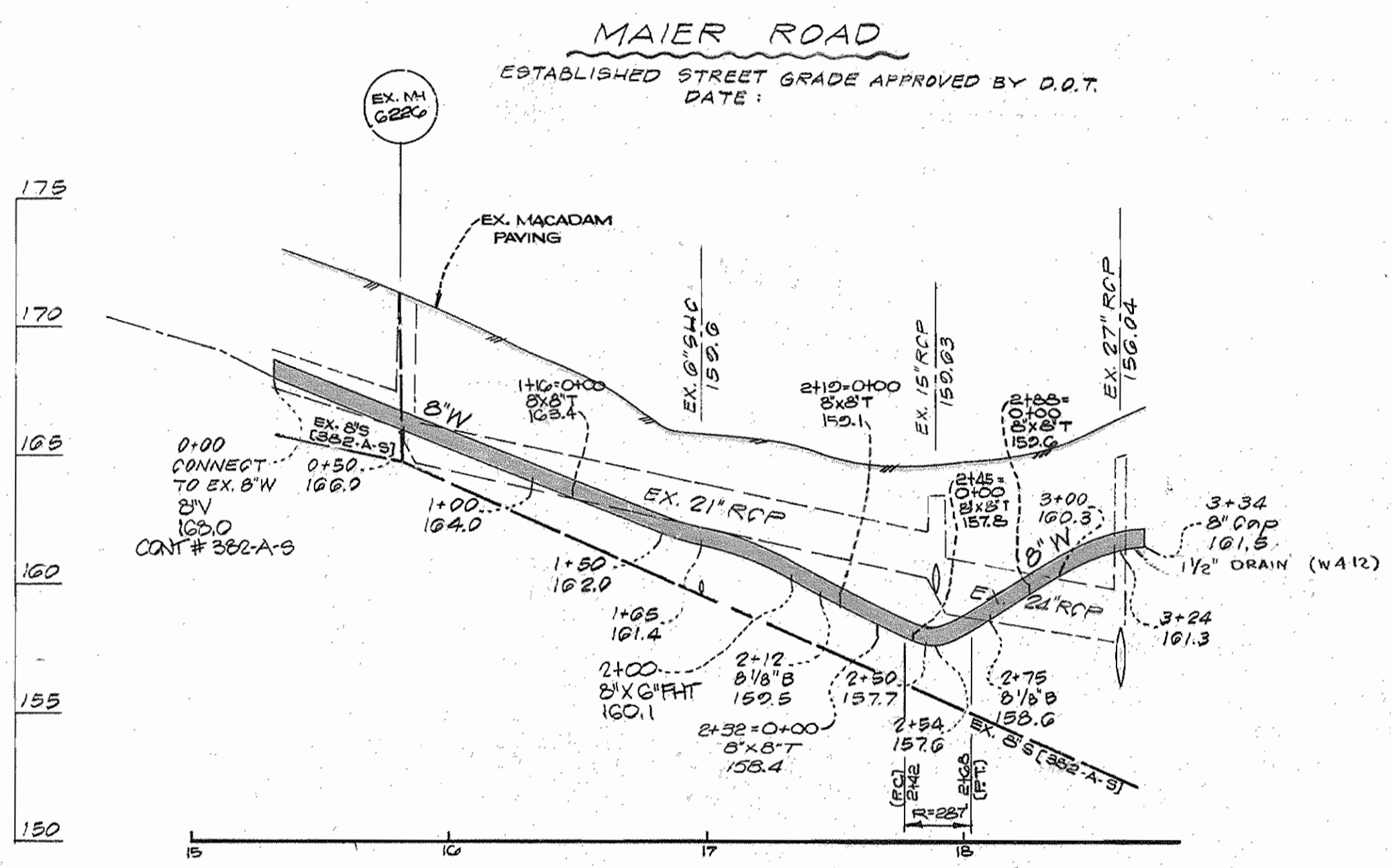
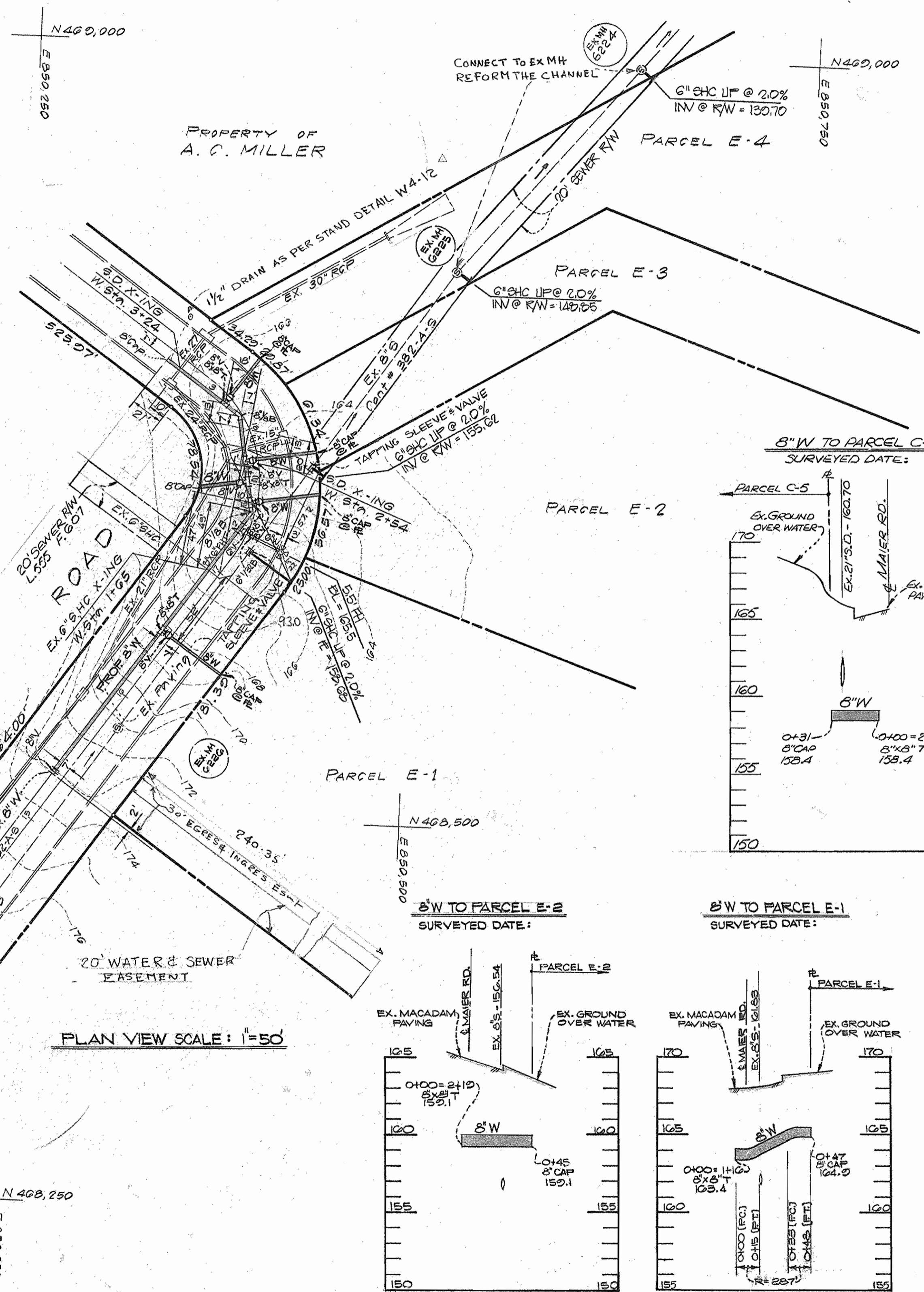
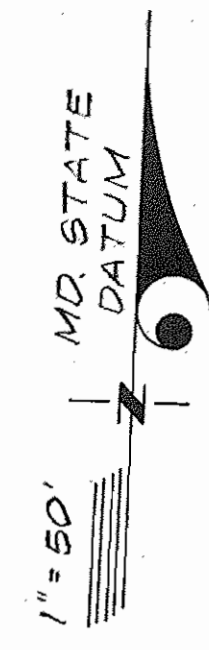
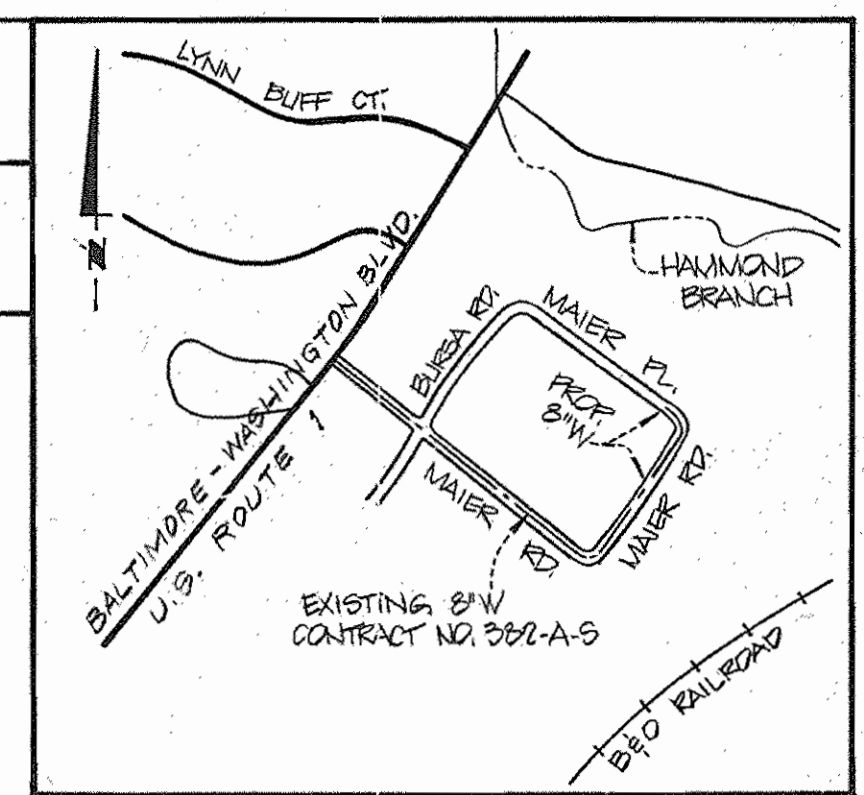


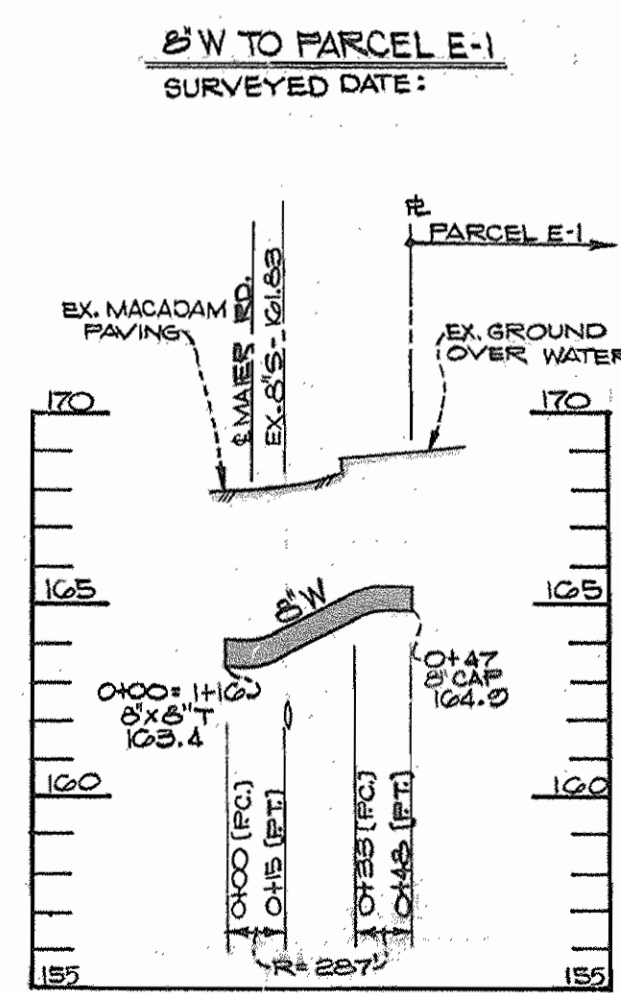
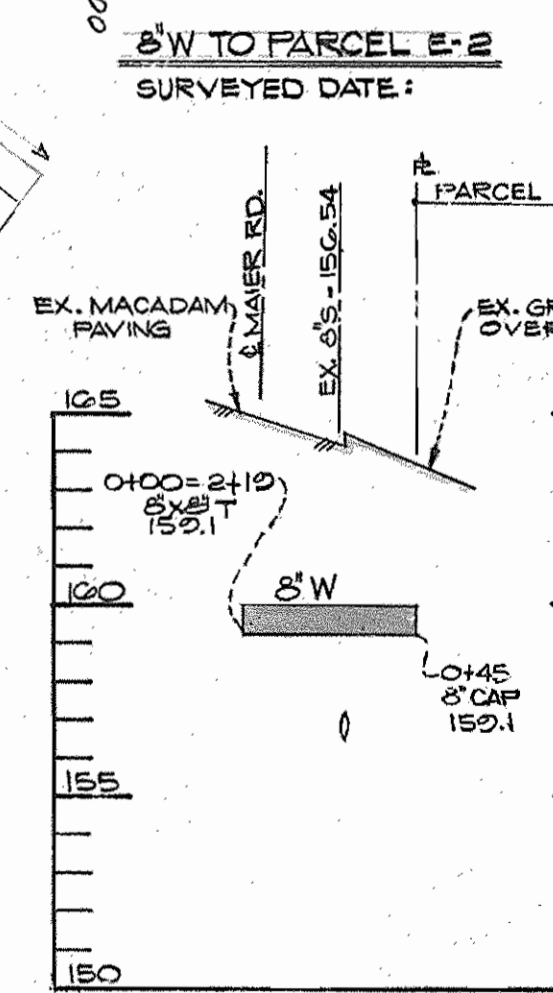
ITEM	QUANTITIES	BID	AS-BUILT	MATERIAL / SUPPLIER
8" W	L.F.	500'	530 L.F.	U.S. C. DIP - WATER WORKS DIV
8" x 8" B	EA.	2	2 EA	" " " " " "
8" CAP	EA.	5	4 EA	" " " " " "
8" V	EA.	4	5 EA	U.S. P. F. FOUNDRY - WATER WORKS
8" V	EA.	5	6 EA	" " " " " "
FIRE HYDRANT	EA.	1	1 EA	" " " " " "
8" x 8" T (W.P.)	EA.	1	1 EA	" " " " " "
6" WATER	L.F.	20	31 L.F.	" " " " " "
6" V	EA.	1	1 EA	" " " " " "
6" 1/2" E	EA.	1	1 EA	U.S. LENT DIP - WATER WORKS DIV
1 1/2" DRAIN FOR WATER MAIN	EA.	1	1 EA	" " " " " "
6" S	L.F.	60	63 L.F.	CERTAINTEED - B.C. Supply Co.

DRAINAGE AREA: LITTLE PATIENT
 TYPE OF BUILDINGS: INDUSTRIAL
 NO. OF W.A.C.: 4
 NO. OF C.H.C.: 4
 NO. OF LOTS: 14

WATER & SEWER CODE
 FOR COUNTY USE
 WATER: C04
 SEWER: 7099999



PROFILE SCALE:
 HORIZONTAL: 1" = 50'
 VERTICAL: 1" = 5'



GENERAL NOTES

1. Approximate location of existing mains are shown. The Contractor shall take all necessary precautions to protect existing mains and services and maintain uninterrupted supply. Any damage incurred shall be repaired immediately to the satisfaction of the Engineer, at the Contractor's expense.
2. All Horizontal Controls are based on Maryland State Coordinates.
3. All Vertical Controls are based on U.S.G.S. Datum.
4. All pipe elevations shown are invert elevations.
5. Clear all utilities by a minimum of 6" clear all poles by 2'-0" minimum or tunnel as required.
6. For details not shown on the drawings, and for materials and construction methods, use Howard County Design manual, Volume II, Standard Specifications and Details for Construction. The Contractor shall have a copy of volume II on the job.
7. Where test pits have been made on existing utilities, they are noted by the symbol at the location of the test pit. A Note or Notes containing the Results of the test pit or pits is included on the Drawings. Existing utilities in the vicinity of the proposed of the proposed work for which test pits have not been dug shall be located by the Contractor two weeks in advance of construction operations at his own expense.
8. Contractor should notify the following Utilities or Agencies at least five working days before starting work shown on these plans.
 State Highway Administration - 531-5533
 Baltimore Gas & Electric Co. - Contractor Services 561-2535
 Baltimore Gas & Electric Co. - Underground Damage Control 284-2621
 Baltimore Gas & Electric Co. - Trouble Shooting 208-0013
 Miss Utility - 1-550-0100
 Colonial Pipeline Co. - 703-1390
 Bureau of Utilities, Howard County Department of Public Works - 992-2366
9. Trees and shrubs are to be protected from damage to maximum extent. Trees and shrubs located within the Construction strip are not to be removed or damaged by the Contractor.
10. All water mains to be D.I.P. unless otherwise noted.
11. Tops of all water mains to have a minimum of 3'-1/2" cover unless otherwise noted.
12. Valves adjacent to tees shall be strapped to tees.
13. All fittings shall be Butressed or Anchored with concrete in accordance with the std. details unless otherwise provided for on drawings.
14. Fire hydrants shall be set to the bury line elevations shown on the drawings. All fire hydrants shall be strapped and butressed with std. details. Soil around the Fire hydrant shall be compacted in accordance with Section 1023 The Standard.
15. The Contractor shall not operate any water main valves on the existing water system.
16. All water house connections shall be for an inside meter setting, unless otherwise noted.
17. Extend pipe as necessary to install plug for blocking, where water mains end with valves.
18. Straw bale dike and silt fence are interchangeable.
19. Sediment control to be built in accordance with F-Artical 15 & Details shown on this plan.

REVIEWED FOR HOWARD S.C.D. AND MEETS TECHNICAL REQUIREMENTS
J. Helms 12 8/15/86
 U.S. SOIL CONSERVATION SERVICE DATE

THIS DEVELOPMENT PLAN IS APPROVED FOR SOIL EROSION AND SEDIMENT CONTROL BY THE HOWARD SOIL CONSERVATION DISTRICT
Robert Beaman 8/15/86

SEDIMENT CONTROL MEASURES FOR THIS CONTRACT WILL BE IMPLEMENTED IN ACCORDANCE WITH ARTICAL 15 & F-36-104.

DEPARTMENT OF PUBLIC WORKS
 HOWARD COUNTY, MARYLAND

John Nunn 8-28-86
 DIRECTOR OF PUBLIC WORKS DATE

Robert Beaman 8-26-86
 CHIEF, BUREAU OF UTILITIES DATE

John Nunn 8-28-86
 CHIEF, BUREAU OF ENGINEERING DATE

John Nunn 8-28-86
 CHIEF, LAND DEVELOPMENT DIVISION DATE

ENGINEERS - ARCHITECTS - PLANNERS
 SCIENTISTS - SURVEYORS - PHOTOGRAMMETRISTS

GREENHORNE & O'MARA, INC.
 2 RESEARCH PLACE
 ROCKVILLE, MARYLAND
 20850-3201
 (301) 948-0900

DES: RVW	
DRN: RVW	
CHK: RHM	
DATE: 4-86	
BY NO.	REVISION

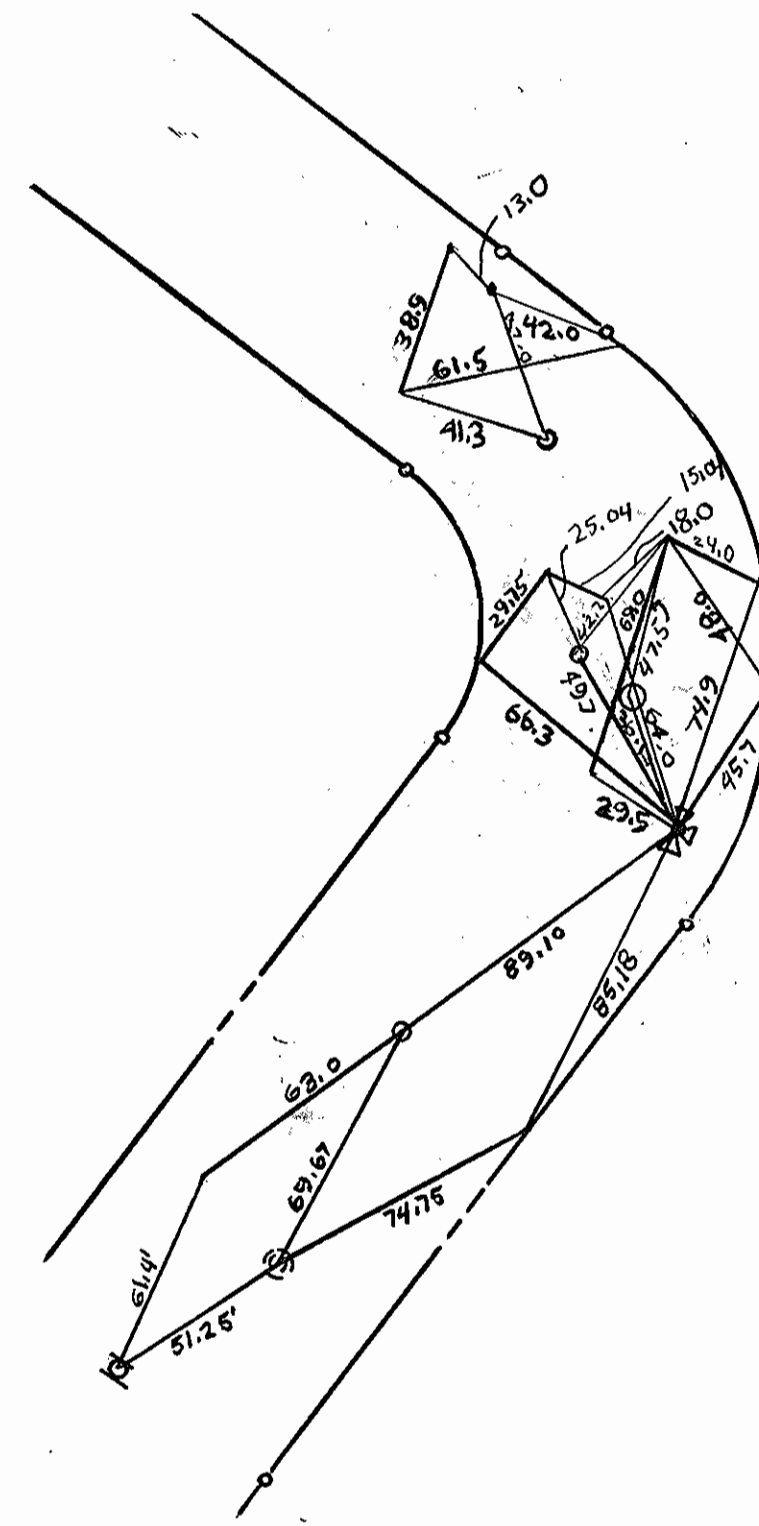
PLAN AND PROFILE FOR
 WATER MAIN EXTENSION

600' SCALE MAP NO. 47 BLOCK NO.

MAIER INDUSTRIAL PARK
 SECTION ONE
 PARCELS C-5 & PARCELS E-1 Thru E-5
 SIXTH ELECTION DISTRICT
 HOWARD COUNTY, MARYLAND
 CONTRACT NO. 24-1536-D

SCALE AS SHOWN

SHEET 1A OF 1



DEPARTMENT OF PUBLIC WORKS
HOWARD COUNTY, MARYLAND

DIRECTOR OF PUBLIC WORKS _____ DATE _____ CHIEF, BUREAU OF ENGINEERING _____ DATE _____

Howard County Bureau of Engineering
Survey/Drafting Division
Public Works Annex
11226 Route 216
Laurel, MD 20707

Howard County Bureau of Engineering
Survey/Drafting Division
Public Works Annex
11226 Route 216
Laurel, MD 20707

DES:					
DRN:					
CHK:					
DATE:	BY	NO.	REVISION	DATE	

PLAN AND PROFILE FOR
WATER MAIN EXTENSION

600' SCALE MAP NO. 47 BLOCK NO. _____

MAIER INDUSTRIAL PARK
SECTION ONE

PARCELS C-5 & PARCELS E-1 THRU E-5
SIXTH ELECTION DISTRICT
HOWARD COUNTY, MARYLAND
CONTRACT NO. 24-1536-D

SCALE
AS
SHOWN

SHEET
18 OF 1