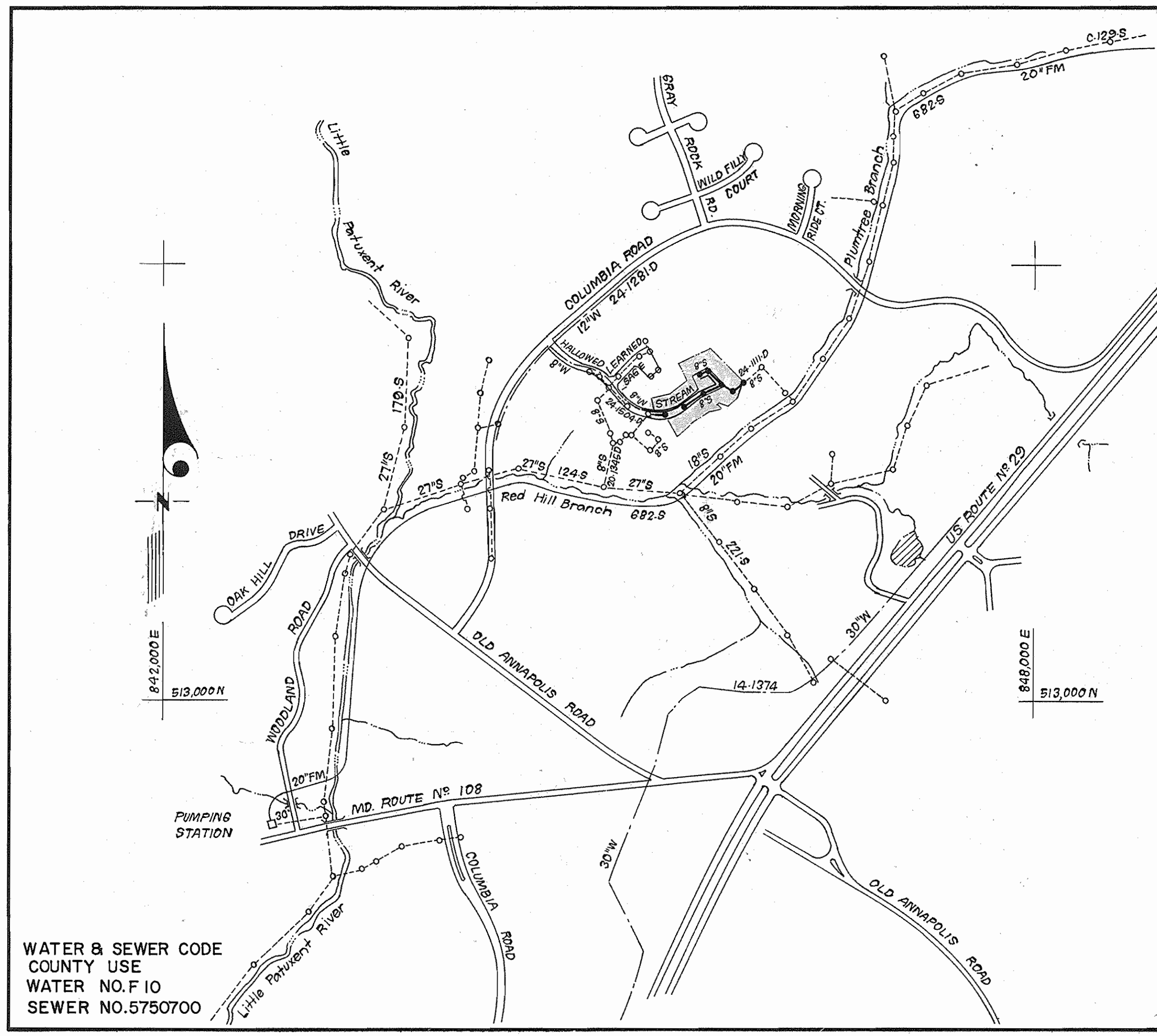


SEWER HOUSE CONNECTION TABLE					
LOTS	Inv. @ R.	Min. C.	LOTS	Inv. @ R.	Min. C.
C-96/C-97	336.2	339.5	C-110	330.5	333.5
C-98/C-99	336.9	340.2	C-120/C-121	330.0	333.0
C-100/C-101	337.8	341.1	C-122/C-123	329.7	332.7
C-102/C-103	334.3	337.6	C-124	329.6	332.6
C-104/C-105	333.4	336.7	C-125/C-126	330.3	334.0
C-106	332.8	336.1	C-127/C-128	330.5	334.1
C-107/C-108	334.7	338.0	C-129/C-130	330.8	334.3
C-109/C-110	334.0	337.3	C-131	333.5	336.7
C-111/C-112	333.8	336.9	C-132/C-133	334.1	337.3
C-113/C-114	333.0	336.1	C-134/C-135	334.7	337.9
C-115/C-116	332.2	335.3	C-136/C-137	337.8	340.9
C-117/C-118	331.0	334.1	C-138/C-139	337.4	340.5

TYPE OF BUILDING	Townhouse
NO OF LOTS	44
NO OF WHC's	44
NO OF SHC's	44
DRAINAGE AREA	ROUTE 108 Pumping Station (PATAPSCO)

GENERAL NOTES

- Approximate location of existing mains are shown. The contractor shall take all necessary precautions to protect existing mains and services and maintain uninterrupted supply. Any damage incurred shall be repaired immediately to the satisfaction of the Inspector, at the contractor's expense.
- All horizontal controls are based on Maryland State Coordinates.
- All vertical controls are based on U.S.G.S. Datum.
- All pipe elevations shown are invert elevations.
- Clear all utilities by a minimum of 6" clear all poles by 2'-0" minimum or tunnel as required. Any cost incurred to the contractor for tunneling or bracing at poles shall be included in unit prices bid for excavation and backfill.
- For details not shown on the drawings use Howard County Standard Details.
- For materials and construction methods use Howard County Standard Specifications & Ho. Co. Design Manual, Volume II. The contractor shall have a copy of Volume II on the job.
- Contractor shall locate existing utilities a minimum of two (2) weeks in advance of construction operations in the vicinity of proposed utilities at his own expense.
- Contractor shall notify the following utilities or agencies at least five (5) working days before starting work shown on these plans.
 - State Highway Administration - 531-5533
 - Baltimore Gas & Electric Company - Contractor Services - 850-4620
 - Baltimore Gas & Electric Company - Underground Damage Control - 859-9004
 - Baltimore Gas & Electric Company - Trouble Shooting - 298-9001
 - "Miss Utility" - 1-559-0100
 - Chesapeake & Potomac (C & P) Telephone Company - 1-800-257-7777
 - Colonial Pipeline Company - 705-1300
 - Bureau of Utilities Howard County - 992-2366
- Trees are to be protected from damage to maximum extent. Trees located within the construction strip are not to be removed or damaged by the contractor.
- Contractor shall remove trees, stumps, and roots along line of excavation as directed by the Inspector. Payment for such removal shall be included in the unit price bid for excavation and backfill.
- Place regulation "Men Working" and warning signs as required to comply with Maryland State Highway Administration Manual of Traffic Control for Highway Construction and Maintenance Operations.
- All water mains to be D.I.P. unless otherwise noted.
- Top of all water mains to have a minimum of 3-1/2' cover unless otherwise noted.
- Valves adjacent to tees shall be strapped to tees.
- Block all fittings with concrete.
- Bury line elevations on fire hydrants shall be set to the elevations shown on the drawings. All fire hydrants shall be strapped and buttressed with concrete in accordance with standard details. Soil around the fire hydrant to be compacted in accordance with Sections 1003 & 1008 of the Standard Specifications.
- All water house connections shall be for an inside meter setting.
- The contractor shall not operate any water main valves on the existing system.
- All sewer mains shall be C.S.P.X., V.C.P.X., P.V.C., or A.C.P. Class 2400 unless otherwise noted.
- The contractor shall provide a joint in all sewer mains within 2'-0" of exterior manhole wall.
- All manholes shall be 4'-0" inside diameter, unless otherwise noted.
- Water main and water house connection lines must have a minimum of one foot separation from the sanitary sewer and sewer house connections as they cross. Except at crossings, water and sewer lines shall have a minimum horizontal separation of 10'.
- For all Copper Water House Connections, utilize flared type fittings only.
- Manhole designated thus: WT shall have Watertight Frame & Cover.



VICINITY MAP
SCALE: 1" = 600'

CONTRACT NO. 24-1531-D
DORSEY HALL
SECT. 2 AREA 2, LOTS C-96 THRU C-142
HOWARD COUNTY, MARYLAND
DEPARTMENT OF PUBLIC WORKS

Sediment Control Measures will be implemented in accordance with Section 219 of the Specifications & with Road Construction Plan F 87.18 ; Drawing 3 , Sediment & Erosion Control.

REVIEWED FOR HOWARD SOIL CONSERVATION DISTRICT AND MEETS TECHNICAL REQUIREMENT.
James Mitchell 7-27-86
SIGNATURE DATE

US. SOIL CONSERVATION SERVICE
This Development Plan is approved for Soil Erosion and Sediment Control by the Howard Soil Conservation District.

APPROVED:
Robert W. Zielinski 7-29-86
Howard S.C.D. DATE

QUANTITIES			
ITEM	EST'D	AS BUILT	MATERIAL/SUPPLIER
8"W	485LF	497 LF	Super Bell-Tite Ductile ^{CLASS 5000} 52' P.P. PRODUCTS
6"W	232LF	269 LF	" " " " " "
8"S	907LF	916 LF	PVC PIPE SDR-35 KCP PLASTICS
6"SHC	764LF	764 LF	" " " " " "
2"WHC	90LF	80 LF	929 FH, 4' 6" Bury M & H Valve Co
1"WHC	385LF	392 LF	" " " " " "
3/4"WHC	585LF	637 LF	" " " " " "
FH	3EA	3 EA.	" " " " " "
4'-0" DIA MH	8EA	8 EA.	ASTM-C478-ATLANTIC CONC. Prod. Inc.
6"V (excl FH)	1EA	1 EA.	" " " " " "

DEPARTMENT OF PUBLIC WORKS
HOWARD COUNTY, MARYLAND

John F. Nemy 10-28-86
DIRECTOR OF PUBLIC WORKS DATE

Robert W. Zielinski 10-29-86
CHIEF, BUREAU OF UTILITIES DATE

Robert W. Zielinski 10-29-86
CHIEF, LAND DEVELOPMENT DIV. DATE

CFS CLARK · FINEPROCK & SACKETT
ENGINEERS · PLANNERS · SURVEYORS

11315 LOCKWOOD DRIVE SILVER SPRING, MARYLAND 20904
(301) 593-3400



DES: JTR	
DRN: JTR	
CHK:	
DATE: 6-27-86	
BY NO.	
REVISION	
DATE	

TITLE SHEET

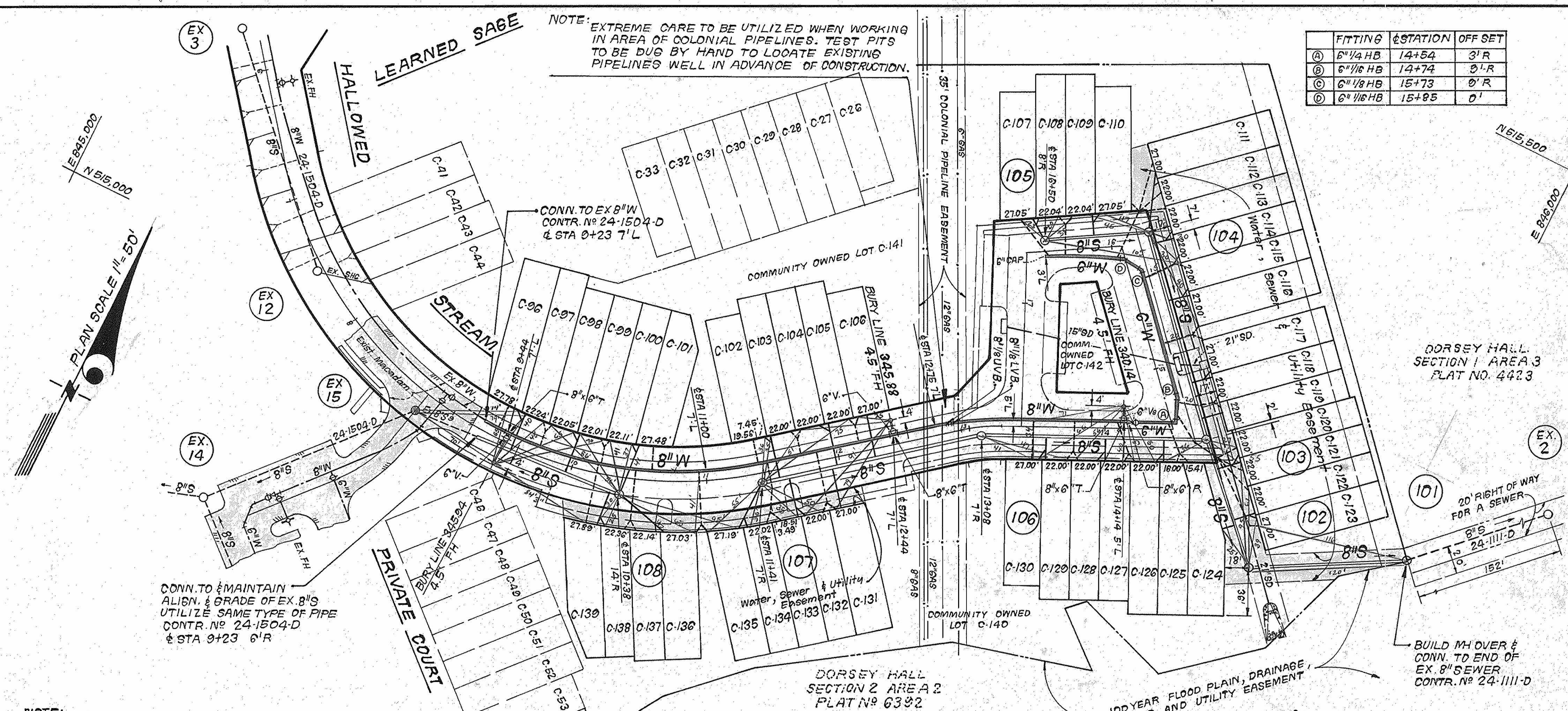
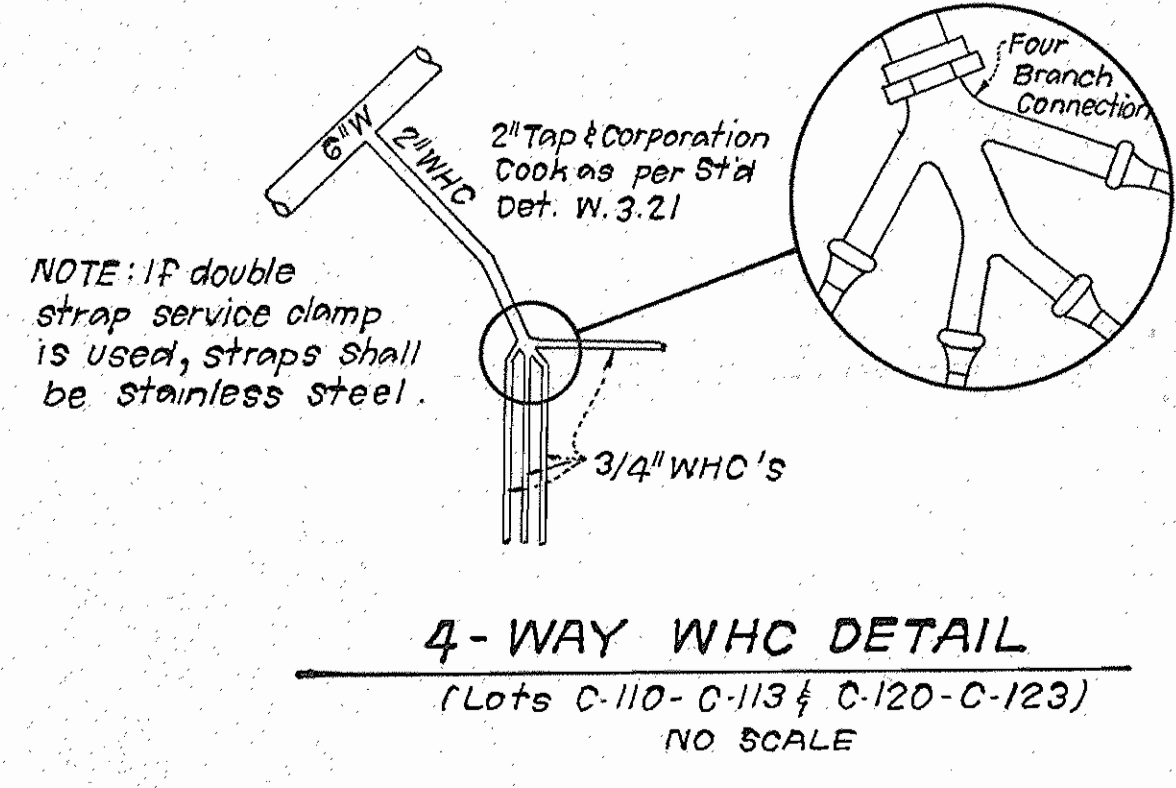
600' SCALE MAP NO. 30 BLOCK NO.

DORSEY HALL
SECTION 2 AREA 2
LOTS C-96 THRU C-142
2ND ELECTION DISTRICT
CONTRACT NO. 24-1531-D

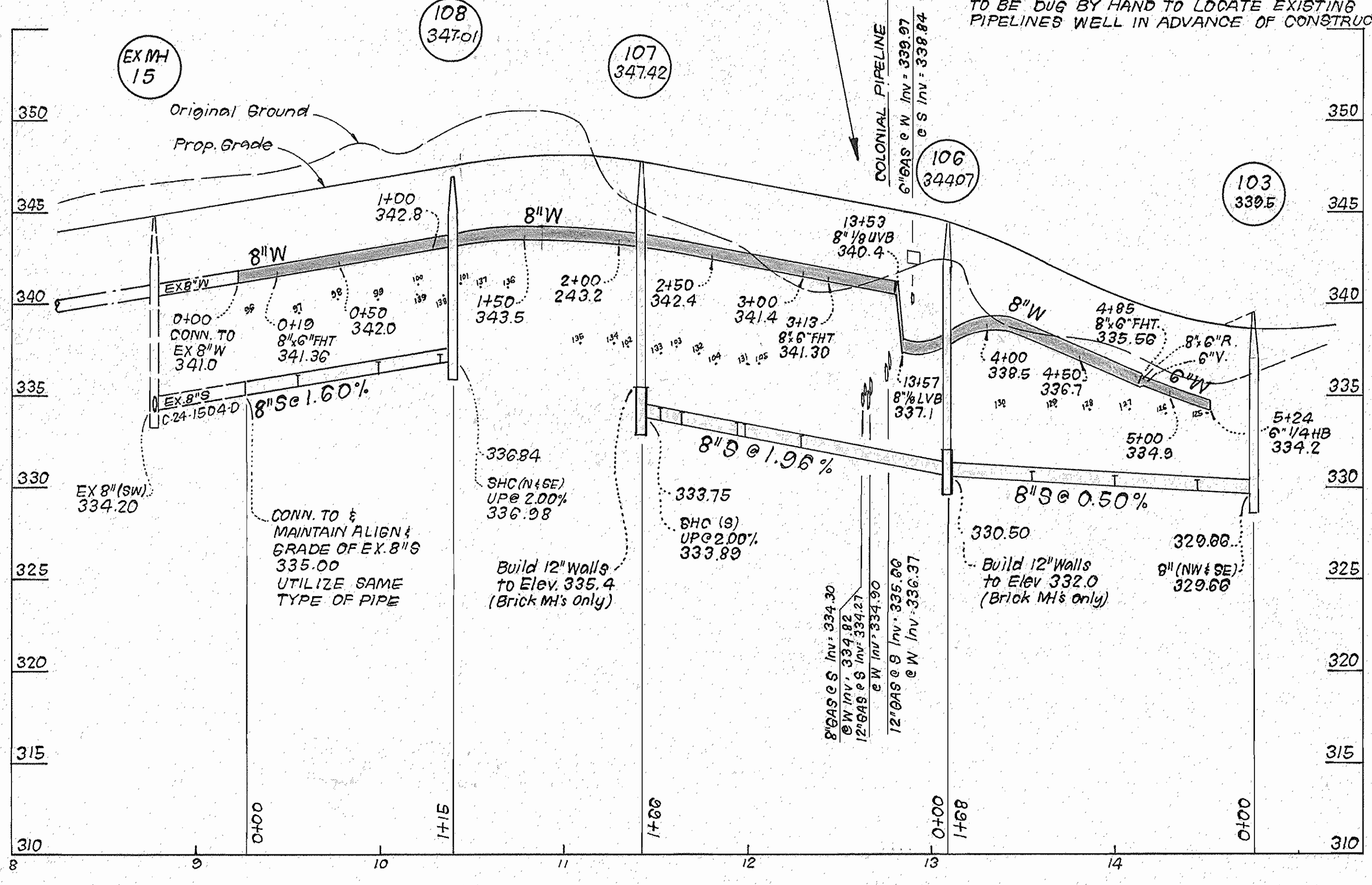
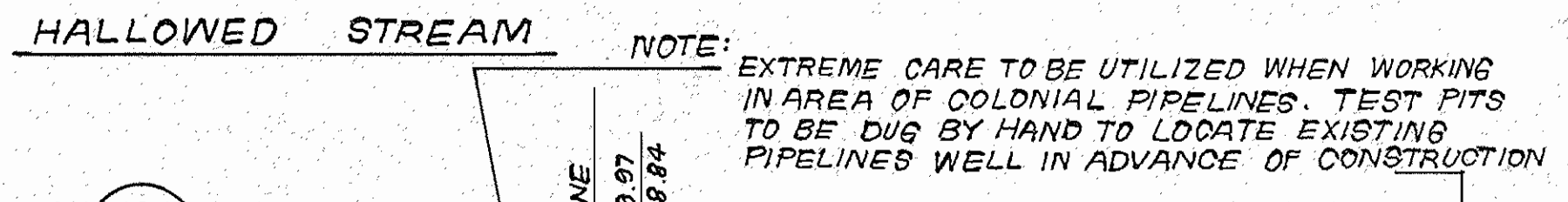
SCALE AS SHOWN

SHEET 1 OF 2

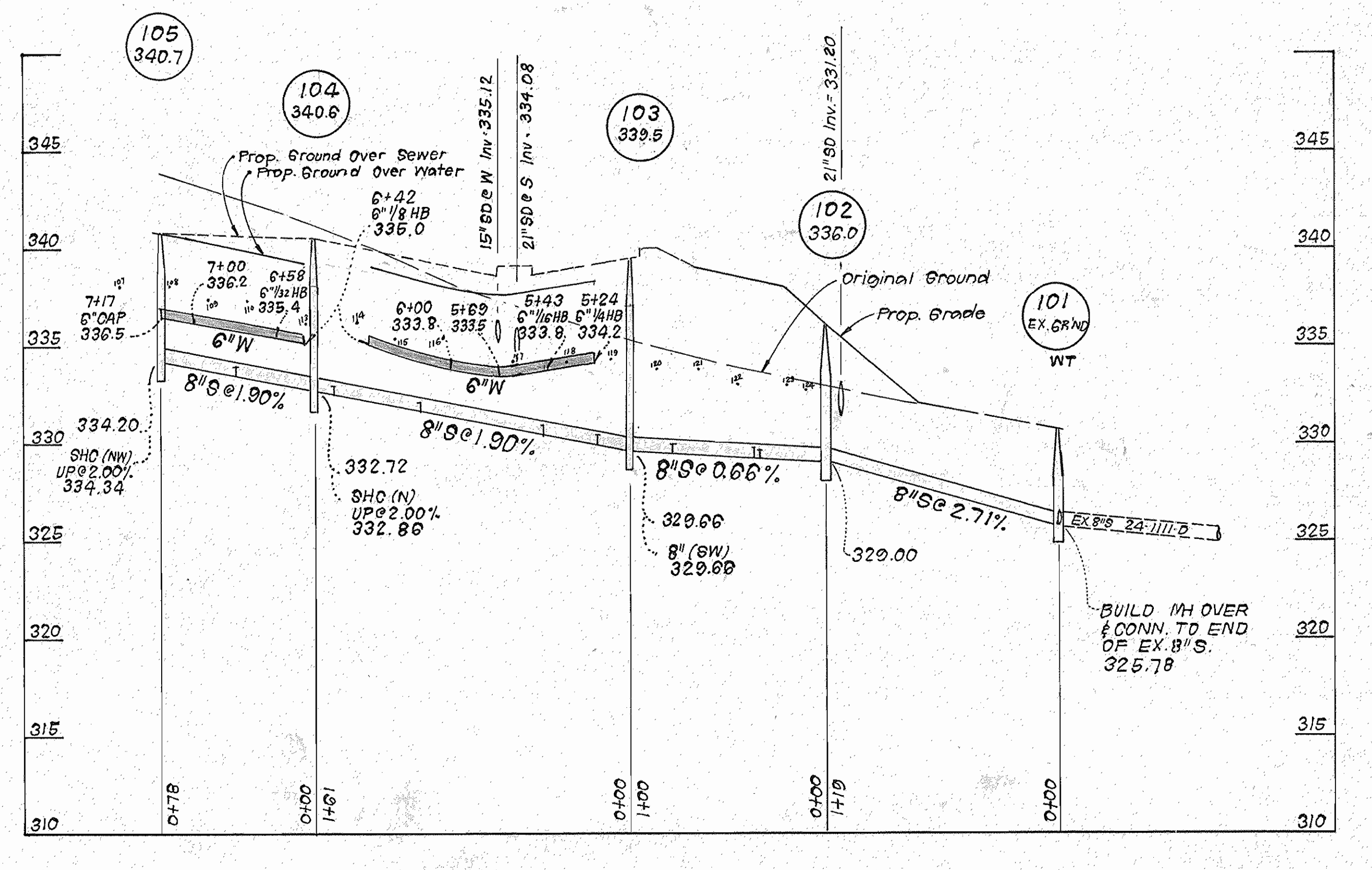
AS-BUILT 11/1/88



FITTING	STATION	OFF SET
(A) 6" 1/4 HB	14+54	3' R
(B) 6" 1/8 HB	14+74	0' R
(C) 6" 1/8 HB	15+73	0' R
(D) 6" 1/8 HB	15+85	0' R



PROFILE SCALE
 HOR: 1" = 50'
 VERT: 1" = 5'



DEPARTMENT OF PUBLIC WORKS
 HOWARD COUNTY, MARYLAND

Director of Public Works: Robert M. Bauman, 10-24-86
 Chief, Bureau of Engineering: [Signature], 10-27-86
 Chief, Bureau of Utilities: [Signature], 10-27-86
 Chief, Land Development Div.: [Signature], 10-27-86

CLARK - FINEFROCK & SACKETT
 ENGINEERS - PLANNERS - SURVEYORS
 11315 LOCKWOOD DRIVE SILVER SPRING, MARYLAND 20904
 (301) 593-3400



DES: JTR	
DRN: JTR	
CHK:	
DATE: 6-27-86	
BY: NO.	REVISION
	DATE

PLAN & PROFILES OF
 WATER & SEWER MAINS

600' SCALE MAP NO. 30 BLOCK NO.

DORSEY HALL
 SECTION 2 AREA 2
 LOTS C-96 THRU C-142
 2ND ELECTION DISTRICT
 CONTRACT NO. 24-1531-D

SCALE
 AS SHOWN
 SHEET
 2 OF 2

AS-BUILT 11/1/88