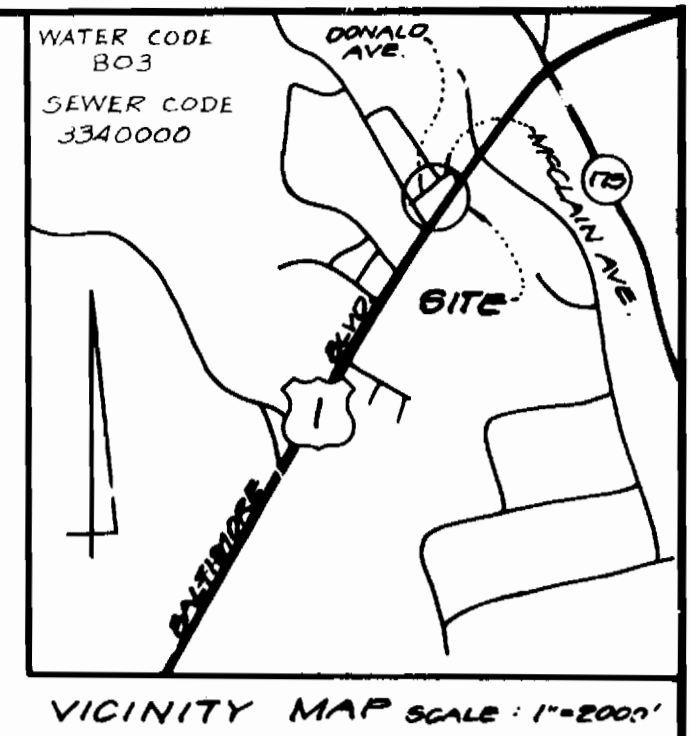
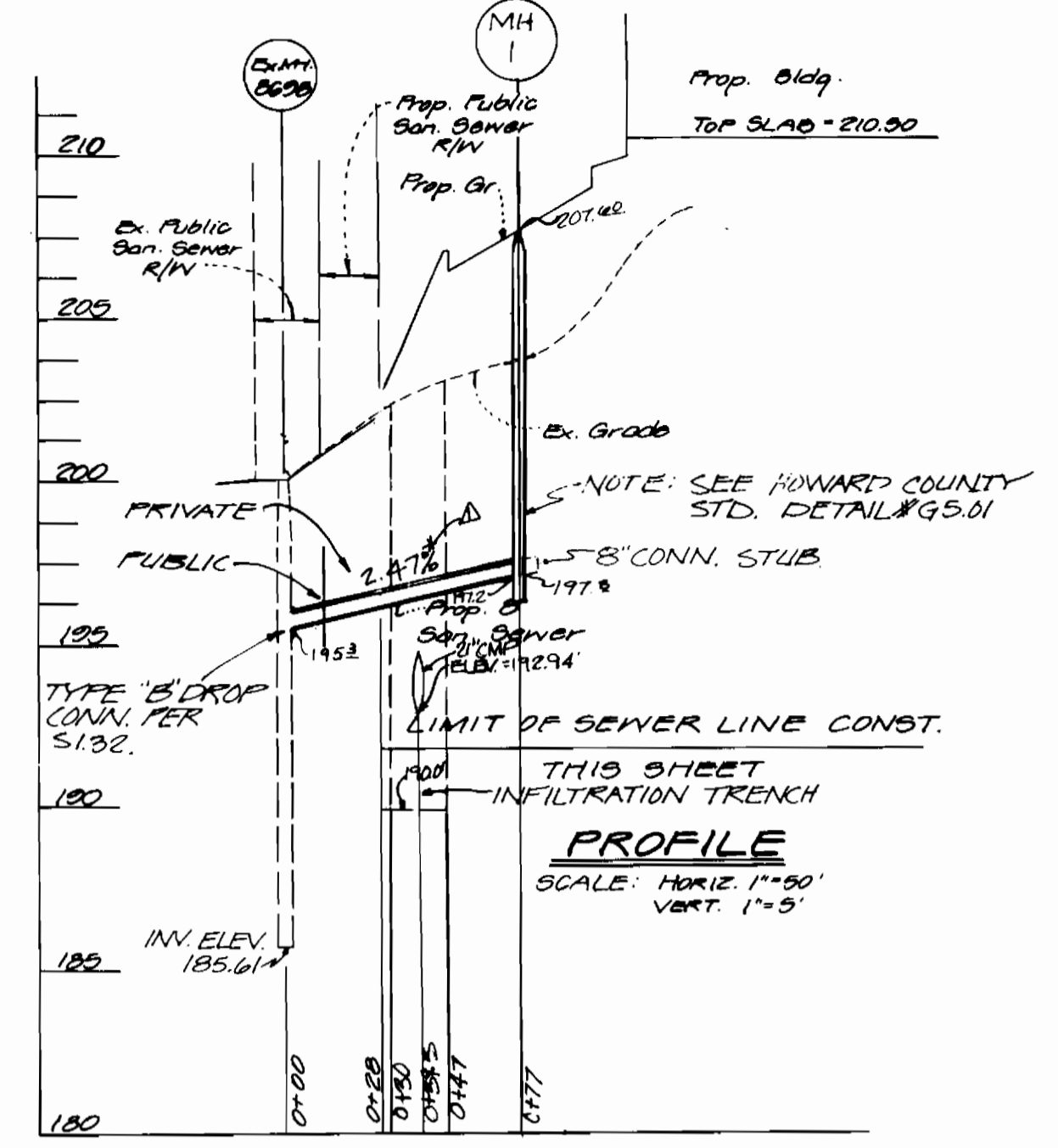
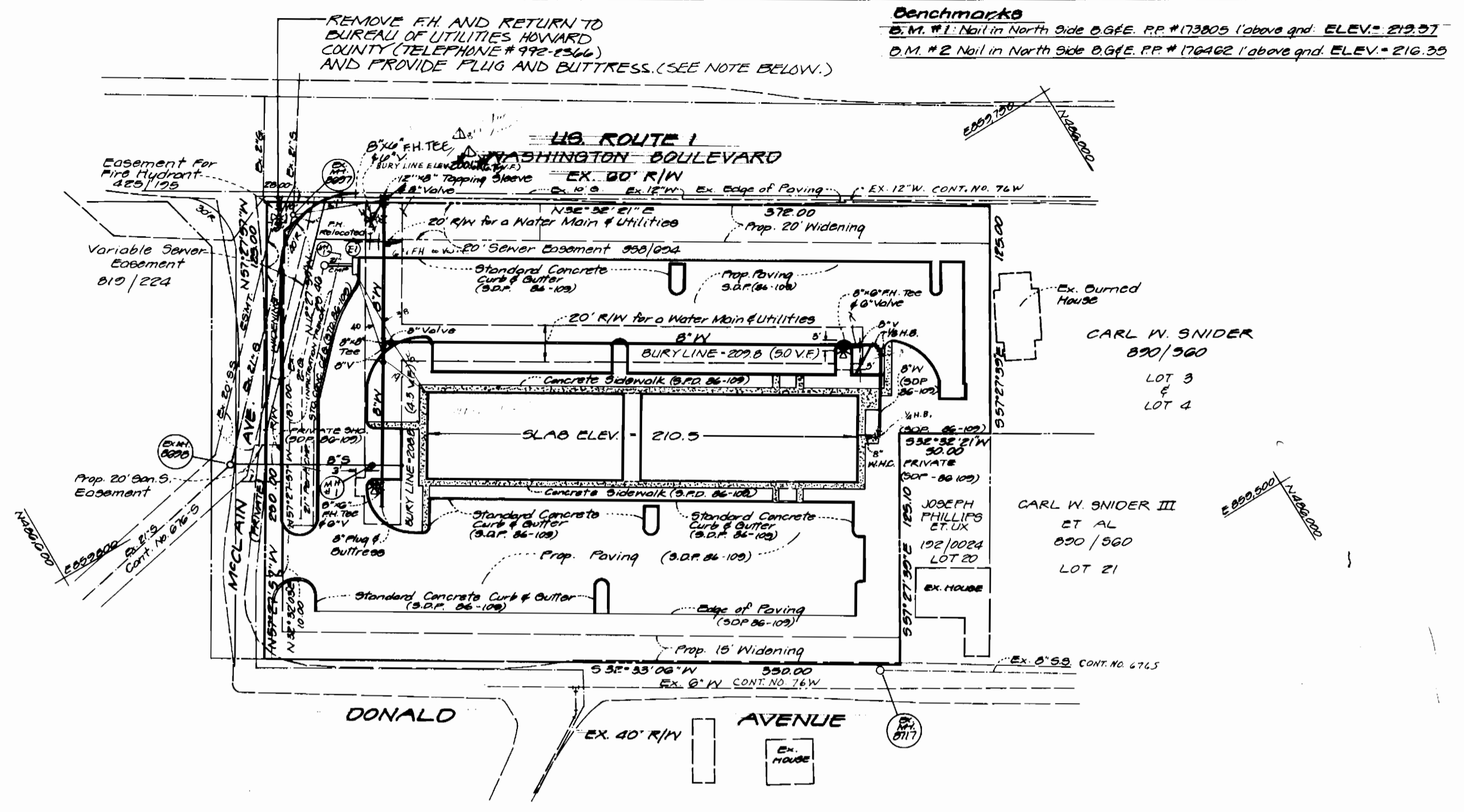


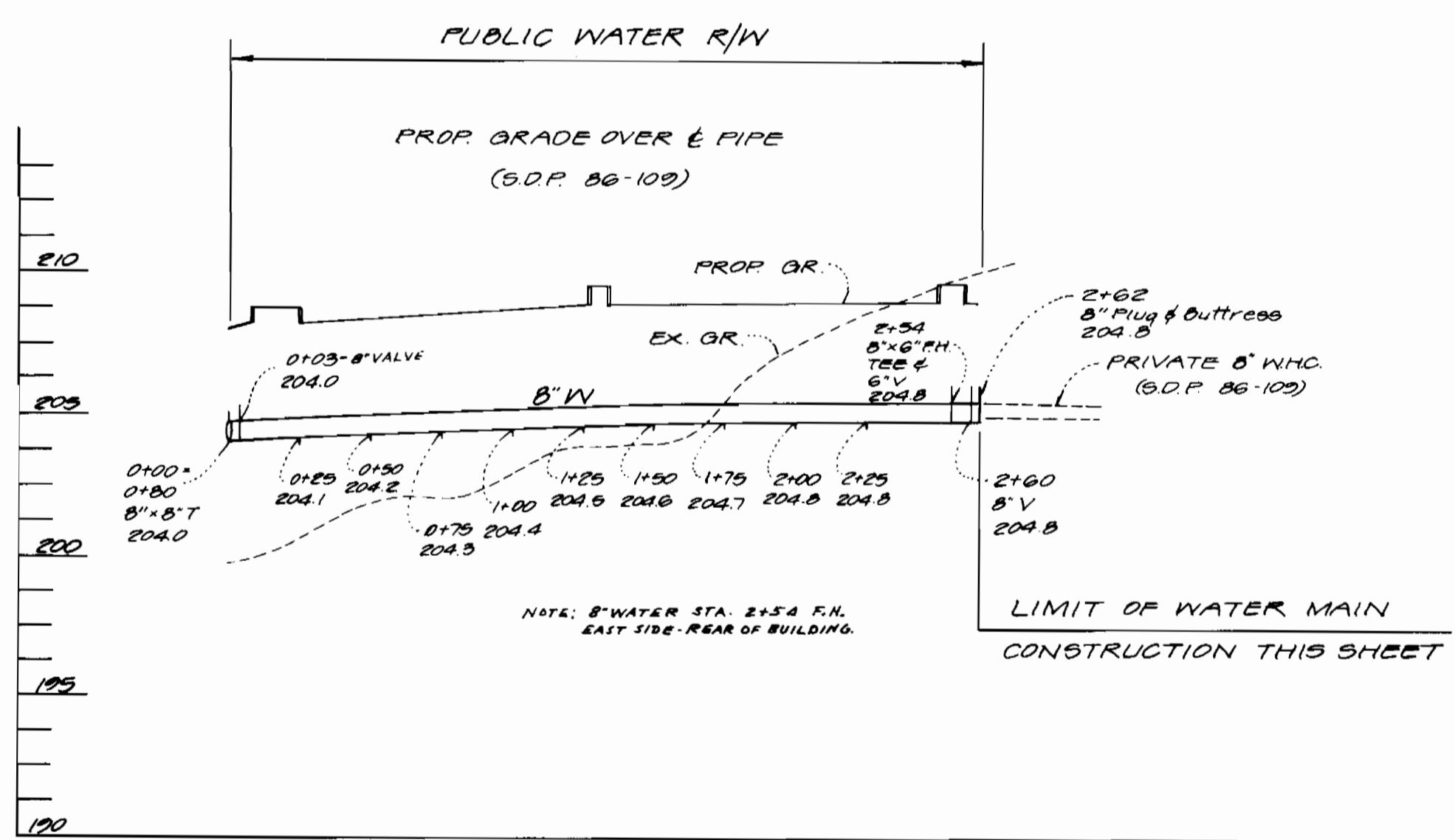
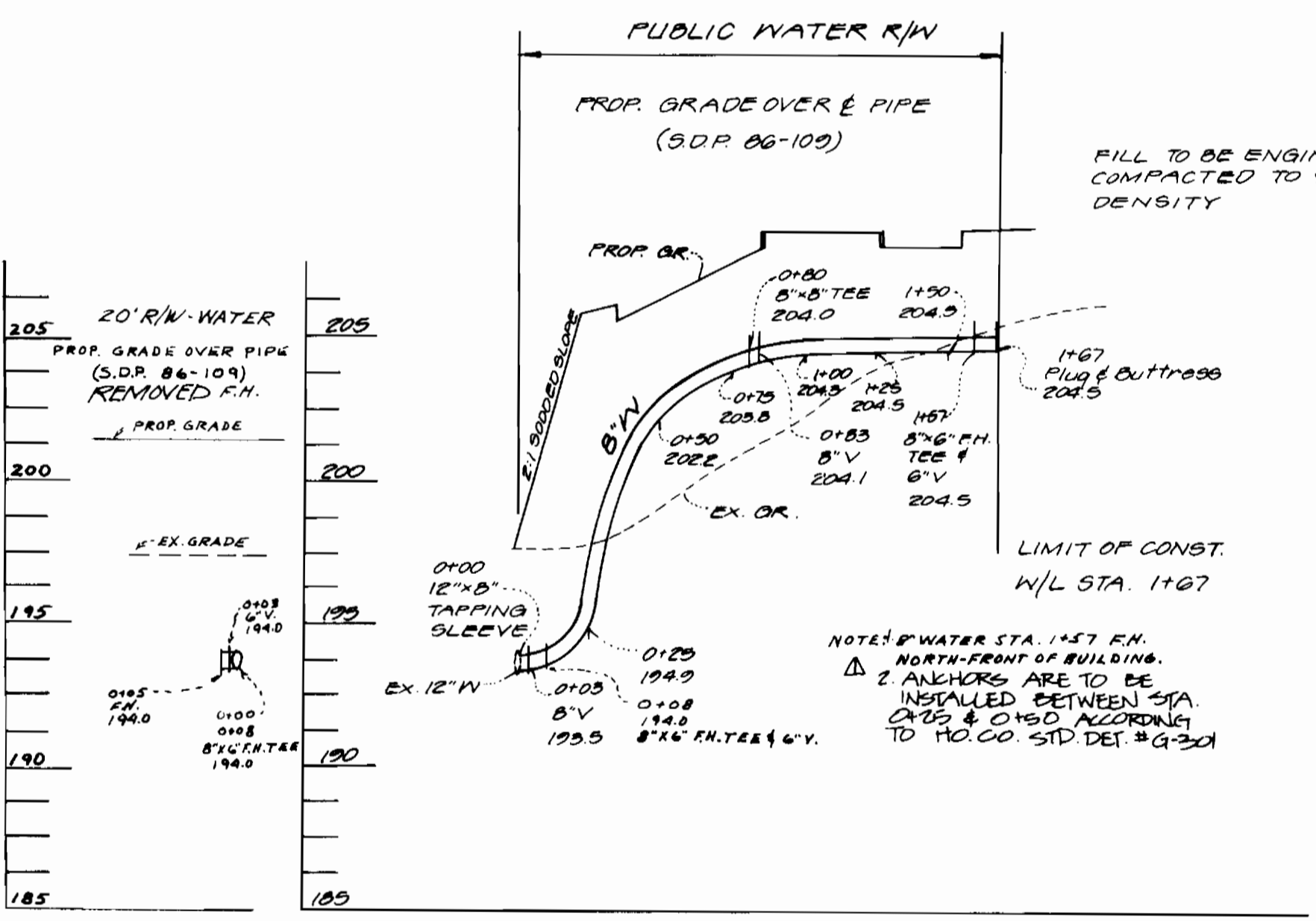
**PLAN**  
Scale: 1"=50'



TYPE OF BUILDING: MOTEL  
NUMBER OF LOTS: 1  
NO. OF WATER HOUSE CONN.: 1  
NO. OF SEWER HOUSE CONN.: 1  
DRAINAGE AREA: LITTLE PATUXENT

**GENERAL NOTES**

- APPROXIMATE LOCATION OF EXISTING MAINS ARE SHOWN. THE CONTRACTOR SHALL TAKE ALL NECESSARY PRECAUTIONS TO PROTECT EXISTING MAINS AND SERVICES AND MAINTAIN UNINTERRUPTED SUPPLY. ANY DAMAGE INCURRED SHALL BE REPAIRED IMMEDIATELY TO THE SATISFACTION OF THE ENGINEER, AT THE CONTRACTOR'S EXPENSE.
- ALL HORIZONTAL CONTROLS ARE BASED ON MARYLAND STATE COORDINATES.
- ALL VERTICAL CONTROLS ARE BASED ON U.S.C. & G.S.
- ALL PIPE ELEVATIONS SHOWN ARE INVERT ELEVATIONS.
- CLEAR ALL UTILITIES BY A MINIMUM OF 6". CLEAR ALL POLES BY 2'-0" MINIMUM OR TUNNEL, AS REQUIRED. ANY COST INCURRED TO THE CONTRACTOR FOR TUNNELING OR BRACING AT POLES SHALL BE INCLUDED IN THE UNIT PRICES BID FOR CONSTRUCTION OF THE MAIN.
- FOR DETAILS NOT SHOWN ON THE DRAWINGS, AND FOR MATERIALS AND CONSTRUCTION METHODS, USE HOWARD COUNTY DESIGN MANUAL, VOLUME IV, STANDARD SPECIFICATIONS AND DETAILS FOR CONSTRUCTION. THE CONTRACTOR SHALL HAVE A COPY OF VOLUME IV ON THE JOB.
- MANHOLES LOCATED WITHIN PROPOSED ROADWAY SHALL HAVE STANDARD HEAVY TRAFFIC MANHOLE FRAME AND COVER, STD. DETAIL 05-51.
- CONTRACTOR SHALL NOTIFY THE FOLLOWING UTILITIES OR AGENCIES AT LEAST FIVE (5) WORKING DAYS BEFORE STARTING WORK SHOWN ON THESE PLANS:
  - BALTIMORE GAS AND ELECTRIC CO. - TROUBLE SHOOTING (298-9015)
  - COLONIAL PIPELINE - (795-1990)
  - BALTIMORE GAS AND ELECTRIC CO. - UNDERGROUND DAMAGE CONTROL (234-5621) AND CONTRACTOR SERVICES (561-2585)
  - ENGINEERING - DAMAGE CONTROL - (234-5621)
  - "MISS UTILITY" - (1-559-0100)
  - CHESAPEAKE AND POTOMAC (C & P) TELEPHONE COMPANY - (725-9976)
  - BUREAU OF UTILITIES, HOWARD COUNTY - (992-2366)
- TREES ARE TO BE PROTECTED FROM DAMAGE TO MAXIMUM EXTENT. TREES LOCATED WITHIN THE CONSTRUCTION STRIP ARE NOT TO BE REMOVED OR DAMAGED BY THE CONTRACTOR.
- CONTRACTOR SHALL REMOVE TREES, STUMPS AND ROOTS ALONG LINE OF EXCAVATION. PAYMENT FOR SUCH REMOVAL SHALL BE INCLUDED IN THE UNIT PRICE BID FOR THE CONSTRUCTION OF THE MAIN.
- PLACE REGULATION MEN WORKING AND WARNING SIGNS REQUIRED TO COMPLY WITH MARYLAND STATE HIGHWAY ADMINISTRATION MANUAL OF TRAFFIC CONTROL FOR HIGHWAY CONSTRUCTION AND MAINTENANCE OPERATION.
- ALL WATER MAINS TO BE D.I.P. CLASS 52, UNLESS OTHERWISE NOTED.
- TOP OF ALL WATER MAINS HAVE A MINIMUM OF 3'-6" COVER UNLESS OTHERWISE NOTED.
- VALVES ADJACENT TO TREES SHALL BE STRAPPED TO TREES.
- BLOCK ALL FITTINGS WITH CONCRETE.
- BURY LINE ELEVATIONS ON FIRE HYDRANTS SHALL BE SET TO THE ELEVATIONS SHOWN ON THE DRAWINGS. ALL FIRE HYDRANTS SHALL BE STRAPPED AND BUTTRESSED WITH CONCRETE IN ACCORDANCE WITH STANDARD DETAILS SOIL AROUND THE FIRE HYDRANT TO BE COMPLETED IN ACCORDANCE WITH SECTION 1003 AND 1008 OF THE STANDARD SPECIFICATIONS.
- ALL WATER HOUSE CONNECTIONS SHALL BE FOR AN INSIDE METER SETTINGS.
- THE CONTRACTOR SHALL NOT OPERATE ANY WATER MAIN VALVES ON THE EXISTING SYSTEM.
- ALL SEWER MAINS SHALL BE C.S.P.X., V.C.P.X., A.C.P. CLASS 2400 OR P.V.C. UNLESS OTHERWISE NOTED.
- THE CONTRACTOR SHALL PROVIDE A JOINT IN ALL SEWER MAINS WITHIN 2'-0" OF THE EXTERIOR MANHOLE WALL.
- ALL MANHOLES SHALL BE 4'-0" INSIDE DIAMETER, UNLESS OTHERWISE NOTED.
- MANHOLES SHOWN WITH 12" AND 16" WALLS ARE BRICK MANHOLES ONLY.
- WATER MAIN AND WATER HOUSE CONNECTION LINE MUST BE PLACED SO AS TO HAVE AT LEAST ONE (1) FOOT SEPARATION FROM THE SEWER MAIN OR SEWER HOUSE CONNECTION AS THEY PASS ABOUT IT.
- FOR ALL COPPER WATER HOUSE CONNECTIONS, UTILIZE FLARED TYPE FITTINGS ONLY.
- ALL FITTINGS SHALL BE BUTTRESSED OR ANCHORED WITH CONCRETE IN ACCORDANCE WITH THE STANDARD DETAILS UNLESS OTHERWISE PROVIDED FOR ON THE DRAWINGS.
- WHERE TEST PITS HAVE BEEN MADE ON EXISTING UTILITIES, THEY ARE NOTED BY THE SYMBOL AT THE LOCATION OF THE TEST PIT. A NOTE OR NOTATION CONTAINING THE RESULTS OF THE TEST PIT OR PITS IS INCLUDED ON THE DRAWINGS. EXISTING UTILITIES IN THE VICINITY OF THE PROPOSED WORK FOR WHICH TEST PITS HAVE NOT BEEN DUG SHALL BE VERIFIED BY THE CONTRACTOR TO HIS OWN SATISFACTION. ANY DAMAGE TO EXISTING FACILITIES DUE TO THE CONTRACTOR'S NEGLIGENCE SHALL BE REPAIRED AT THE CONTRACTOR'S EXPENSE.
- SERVICE CLAMPS ARE TO HAVE STAINLESS STEEL STRAPS.



**PROFILES**  
SCALE: HORIZ. 1"=50'  
VERT. 1"=5'

- NOTE:**
- EXCAVATE TO EXPOSE F.H. & VALVE.
  - CHECK AND/OR RESTRAP EXISTING 6" VALVE TO TEE.
  - CLOSE OFF 6" VALVE, REMOVE F.H. AND INSTALL MECHANICAL JOINT PLUG IN VALVE.
  - INSTALL CONCRETE BUTTRESS FROM FLUGGED VALVE TO SOLID GROUND.
  - REMOVE VALVE BOX AND BACKFILL TO SOLID GROUND.
  - SHOW DIMENSIONS LOCATING VALVE ON AS-BUILT DRAWING.
  - RETURN REMOVED HYDRANT AND PARTS TO BUREAU OF UTILITIES.

SEDIMENT CONTROL MEASURES FOR THIS CONTRACT WILL BE IMPLEMENTED IN ACCORDANCE WITH SECTION 15 OF THE HOWARD COUNTY DESIGN MANUAL AND STANDARDS AND SPECIFICATIONS FOR SOIL EROSION AND SEDIMENT CONTROL IN DEVELOPING AREAS AND ALSO AS SHOWN ON THE GRADING AND SEDIMENT CONTROL PLAN 5086-124

REVIEW FOR HOWARD COUNTY SOIL CONSERVATION DISTRICT AND MEETS TECHNICAL REQUIREMENTS.

*James M. Nelson* 8-5-86  
U.S. SOIL CONSERVATION SERVICE DATE

THIS DEVELOPMENT PLAN IS APPROVED FOR EROSION AND SEDIMENT CONTROL BY HOWARD COUNTY SOIL CONSERVATION DISTRICT.

APPROVED: *Stephen L. Huber* 8/5/86  
HOWARD COUNTY SOIL CONSERVATION DISTRICT DATE

QUANTITIES			
Item	Estimated	As-Built	Supplier
8" Water	420 LF	420 LF	
6" Water	11 LF	11 LF	
8" x 6" F.H. 6" VALVE	3 EA	3 EA	
Fire Hydrants	3 EA	2 EA	
8" Valves	3 EA	2 EA	
12" x 8" T.S.L.V.	1 EA	1 EA	
8" SAN SEWER	10 LF	10 LF	
F.H. RELOCATION	RELOCATED		

DEPARTMENT OF PUBLIC WORKS  
HOWARD COUNTY, MARYLAND

*Jack F. Nemy* 8-19-86  
DIRECTOR OF PUBLIC WORKS DATE

*Robert Wood* 8/15/86  
CHIEF, BUREAU OF UTILITIES DATE

*Robert Wood* 8-18-86  
CHIEF, BUREAU OF UTILITIES DATE

DEVELOPMENT FACILITATORS, INC.  
504 BALTIMORE/ANNAPOLIS BLVD.  
SEVERNA PARK, MD. 21146  
(301) 647-2727



DES: \_\_\_\_\_  
DRN: \_\_\_\_\_  
CHK: *CLI* 2 ADD. BURY LINE ELEV. 300.67  
*JPL* 1 ADD. NOTE 2: ADD 8" x 6" F.H. NOTE ADD 2.47% SLOPE  
DATE: \_\_\_\_\_

PLAN AND PROFILE  
WATER AND SEWER MAINS

CONTRACT NO. 24-1529-D  
RED ROOF INN  
SIXTH ELECTION DISTRICT  
HOWARD COUNTY, MD

SCALE AS SHOWN  
SHEET 1 OF 1