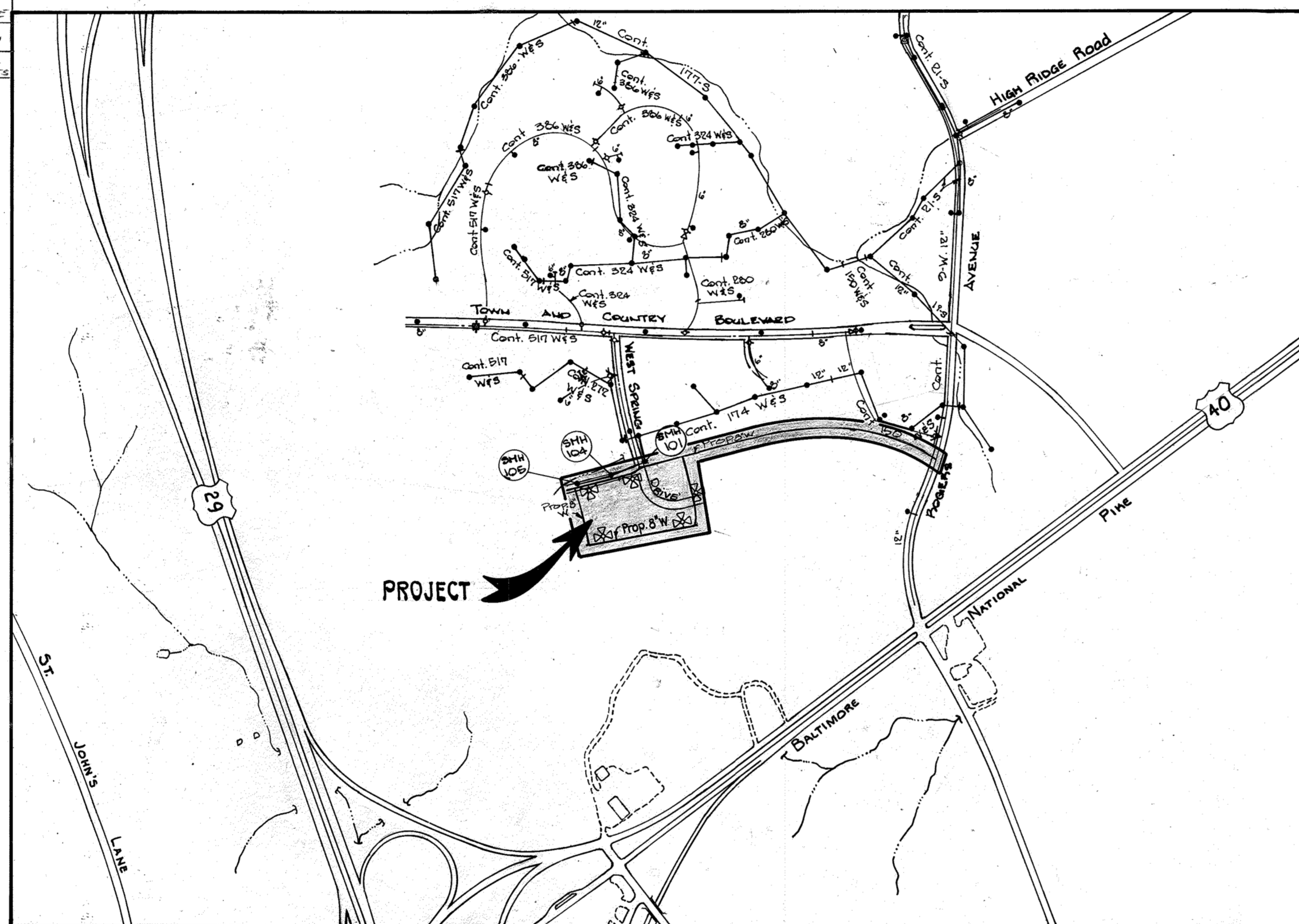


QUANTITIES

ITEM	ESTIMATED	AS BUILT	MATERIAL SUPPLIES
8" S	1069 L.F.	1065 L.F.	NATIONAL PIPE
8" Plug	1 EA.	1 EA.	U.S. CENT. DUCTILE IRON PIPE
Manhole	5 EA.	5 EA.	ATLANTIC CONCRETE
6" SHC	37 L.F.	37 L.F.	NATIONAL PIPE
8" W	3669 L.F.	3669 L.F.	U.S. CENT. DUCTILE IRON PIPE
6" W	60 L.F.	60 L.F.	" " " "
2" WHC	40 L.F.	40 L.F.	HOWELL MANH. CO.
8" x 8" Tee	5 EA.	5 EA.	CENT. DUCTILE IRON PIPE
8" x 6" Tee	5 EA.	5 EA.	" " " "
8" x 3" Tee	2 EA.	2 EA.	" " " "
8" x 2 1/2" Tee	2 EA.	2 EA.	" " " "
8" Y	14 EA.	14 EA.	U.S. PIPE & FOUNDRY
6" Y	5 EA.	5 EA.	" " " "
2' Meter Vault	3 EA.	3 EA.	HAYS-ROMAC INDUSTRIES
3' Meter Vault	1 EA.	1 EA.	" " " "
Blowoff	1 EA.	1 EA.	" " " "
8" CAP	2 EA.	2 EA.	U.S. CENT. DUCTILE IRON PIPE
8" plug and address	2 EA.	2 EA.	" " " "
1/2" W. Meter	1 EA.	1 EA.	HAYS-ROMAC INDUSTRIES
1" W. Meter	1 EA.	1 EA.	" " " "
FH	5 EA.	5 EA.	U.S. PIPE & FOUNDRY
12" x 8" Tapping Sleeve	1 EA.	1 EA.	U.S. CENT. DUCTILE IRON PIPE
22 1/2" H.B.	1 EA.	2 EA.	" " " "
Air Release Valve	1 EA.	1 EA.	HAYS-ROMAC INDUSTRIES

GENERAL NOTES

- Approximate location of existing mains are shown. The contractor shall take all necessary precautions to protect existing mains and services and maintain uninterrupted supply. Any damage incurred shall be repaired immediately to the satisfaction of the Engineer, at the contractor's expense.
- All horizontal controls are based on Maryland State Coordinates.
- All vertical controls are based on U.S.G.S. Datum.
- All pipe elevations shown are invert elevations.
- Clear all utilities by a minimum of 6'. Clear all poles by 2'-0" minimum or tunnel as required. Any cost incurred to the contractor for tunneling or bracing at poles shall be included in unit prices bid for construction of the main.
- For details not shown on the drawings use Howard County Standard Details.
- For materials and construction methods use Howard County Standard Specifications.
- Contractor shall locate existing utilities a minimum of two (2) weeks in advance of construction operations in the vicinity of proposed utilities at his own expense.
- Contractor shall notify the following utilities or agencies at least five (5) working days before starting work on these plans:
 State Highway Administration - 531-5533
 Baltimore Gas & Electric Company - Underground Electric Distribution Customer Service - 685-0123
 Baltimore Gas & Electric Company - Underground Gas Distribution Customer Service - 685-0123
 Engineering - "Damage Control" - 234-5621
 "Miss Utility" - 1-559-0100
 Chesapeake & Potomac (C&P) Telephone Company - 725-9976
 American Telephone and Telegraph - Cable Location Division - 393-3553
 Colonial Pipeline Company - 795-1390
 Bureau of Utilities Howard County - 992-2366
- Trees are to be protected from damage to maximum extent. Trees located within the construction strip are not to be removed or damaged by the contractor.
- Contractor shall remove trees, stumps and roots along line of excavation as directed by the Engineer. Payment for such removal shall be included in the unit price bid for construction of the main.
- Place regulation "Men Working" and warning signs as required to comply with Maryland State Highway Administration Manual of Traffic Control for Highway Construction and Maintenance Operations.
- All water mains to be D.I.P. unless otherwise noted.
- Top of all water mains to have a minimum of 3'-1/2' cover unless otherwise noted.
- Valves adjacent to tees shall be strapped to tees.
- Block all fittings with concrete.
- Bury line elevations on fire hydrants shall be set to the elevations shown on the drawings. All fire hydrants shall be strapped and buttressed with concrete in accordance with standard details. Soil around the fire hydrant to be compacted in accordance with Sections 1003 and 1008 of the Standard Specifications.
- All water house connections shall be for an inside meter setting.
- The contractor shall not operate any water main valves on the existing system.
- For all copper water house connections, utilize flared type fittings only.
- All sewer mains shall be C.S.P.X., R.C.S.P., V.C.P.X., A.C.P. Class 2400 or PVC unless otherwise noted.
- The contractor shall provide a joint in all sewer mains within 2'-0" of exterior manhole wall.
- All manholes shall be 4'-0" inside diameter, unless otherwise noted.
- Manholes shown with 12" and 16" walls are brick manholes only.
- House(s) with the symbol "C.N.S." indicates that cellar can not be served.
- All inside meters shall be 3/4" meters
- All lots and buildings fronting on Public water main must have either single 3/4" WHC or twin 1" WHC, either of which must be within the Public easement.
- Sediment Control Details shown on SDP-66-214.



WATER CODE 1453600
SEWER CODE FO3
VICINITY MAP SCALE: 1" = 600'

NO. OF LOTS: 2 PARCEL
TYPE OF BUILDINGS: APARTMENTS
NO. OF WHC'S: 52
NO. OF SHC'S: 4
DRAINAGE AREA: PATAPSCO
NO. OF APARTMENT UNITS: 48

Sediment Control Measures will be implemented in accordance with Article No. 15 of the Specifications & with Road Construction Plan F-86-160; Drawing Sediment & Erosion Control

REVIEWED FOR HOWARD SOIL CONSERVATION DISTRICT AND MEETS TECHNICAL REQUIREMENT.

James M. Nelson 3-16-87
SIGNATURE DATE

US SOIL CONSERVATION SERVICE

This Development Plan is approved for Soil Erosion and Sediment Control by the Howard Soil Conservation District.

APPROVED:
Stephen L. Fisher 3/16/87
HOWARD S.C.D. DATE

DEPARTMENT OF PUBLIC WORKS
HOWARD COUNTY, MARYLAND

John F. Nemy 3-17-87
DIRECTOR OF PUBLIC WORKS DATE
Robert M. Brummer 3-9-89
CHIEF, BUREAU OF UTILITIES DATE

James R. Ryan 3-16-87
CHIEF, BUREAU OF ENGINEERING DATE
Michael J. Ryan 3-16-87
CHIEF, LAND DEVELOPMENT DIV. DATE

PURDUM & JESCHKE
ENGINEERS
1029 N. CALVERT ST.
BALTIMORE, MARYLAND



DES:				
DRN:				
CHK:				
DATE:				
BY	NO.	REVISION	DATE	

WATER & SEWER
VICINITY MAP & GENERAL NOTES
PROFILES

600' SCALE MAP NO. BLOCK NO.

PARCELS A-2, A-3 & A-4
WILDER PROPERTY
A RESUB. OF A PORTION OF PARCEL A-1, HOEHES PROPERTY
WEST SPRING DRIVE, ELLICOTT CITY
SECOND ELECTION DISTRICT HOWARD COUNTY, MARYLAND
CONTRACT NO. 14-1526-D, F-86-160, SDP-86-214

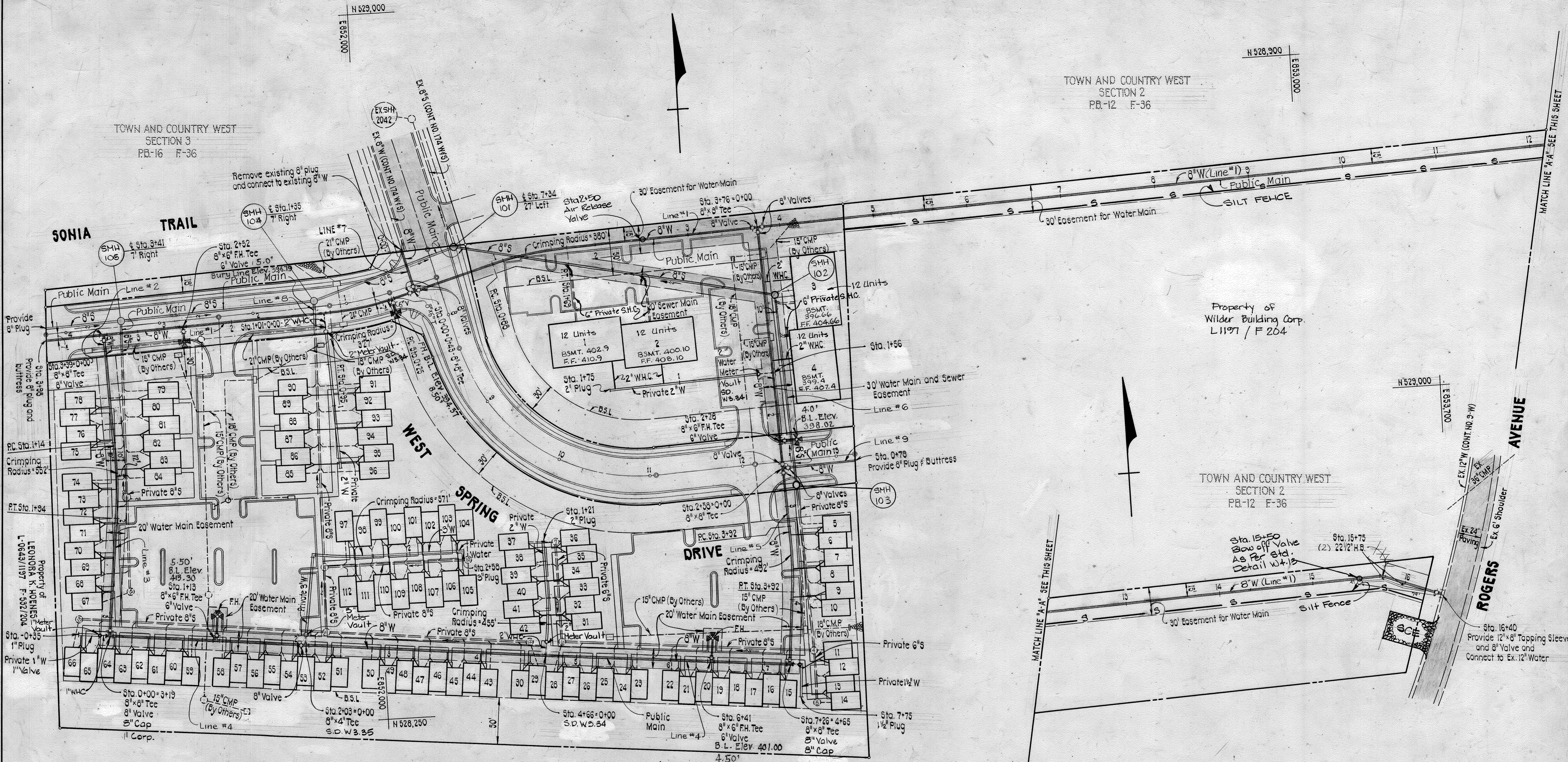
SCALE
1" = 600'
SHEET
1 OF 54

TOWN AND COUNTRY WEST
SECTION 3
PB-16 F-36

TOWN AND COUNTRY WEST
SECTION 2
PB-12 F-36

Property of
Wilder Building Corp.
L 1197 / F 204

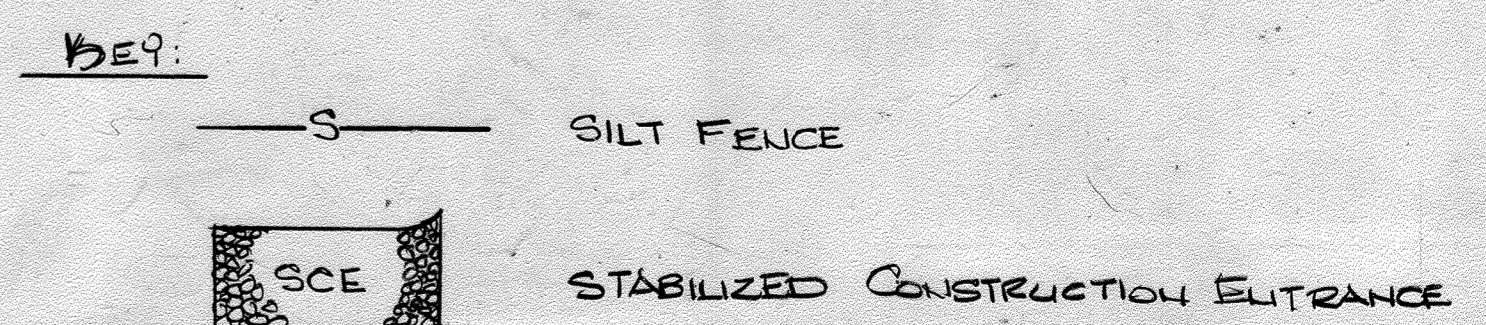
TOWN AND COUNTRY WEST
SECTION 2
PB-12 F-36



PLAN
SCALE: 1"=50'

NOTE: * PRIVATE 2" WATER FOR LOTS 31-42 WAS PLACED TO VAULT ONLY BECAUSE A SEDIMENT POND WAS IN THE WAY.

PLAN
SCALE: 1"=50'



DEPARTMENT OF PUBLIC WORKS
HOWARD COUNTY, MARYLAND
Director of Public Works: *Don F. Namy* 3-17-87
Chief, Bureau of Utilities: *Robert M. Beine* 3-2-87

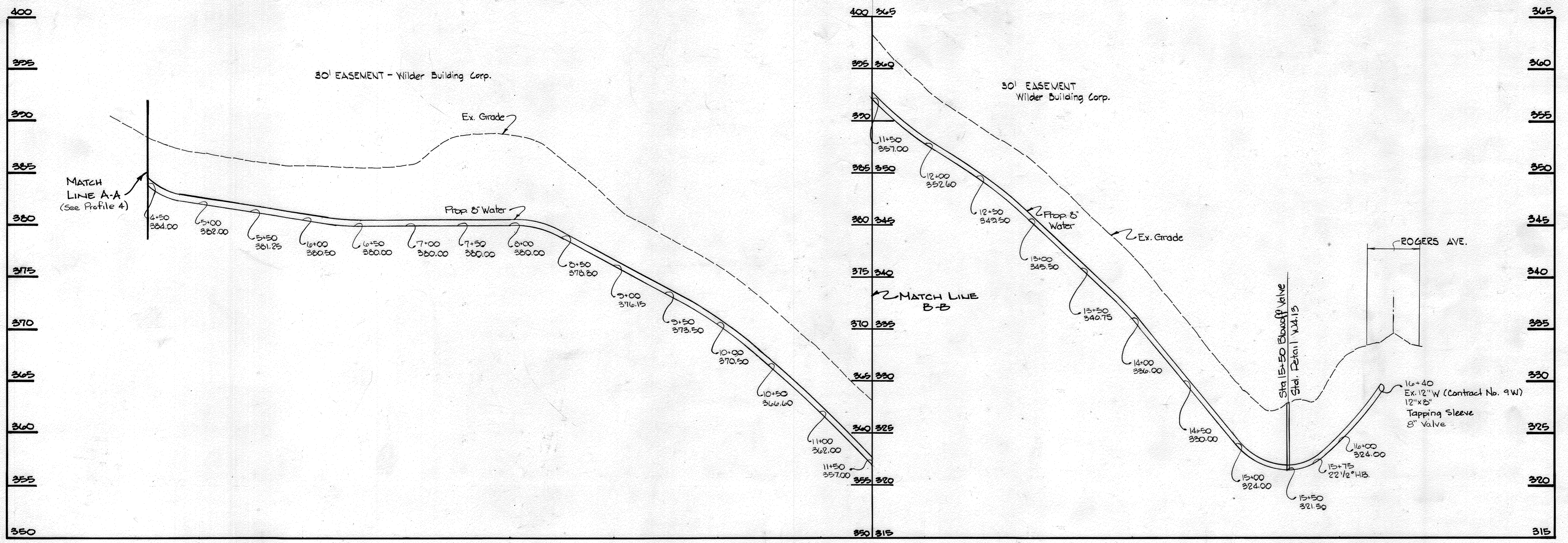
PURDUM & JESCHKE
ENGINEERS
1029 N. CALVERT ST.
BALTIMORE, MARYLAND
Chief, Bureau of Engineering: *William E. Ray* 3-16-87
Chief, Land Development Div.: *William E. Ray* 3-16-87



DES:	ATR				
DRN:	ARW				
CHK:	WGR				
DATE:	BY	NO.	REVISION	DATE	

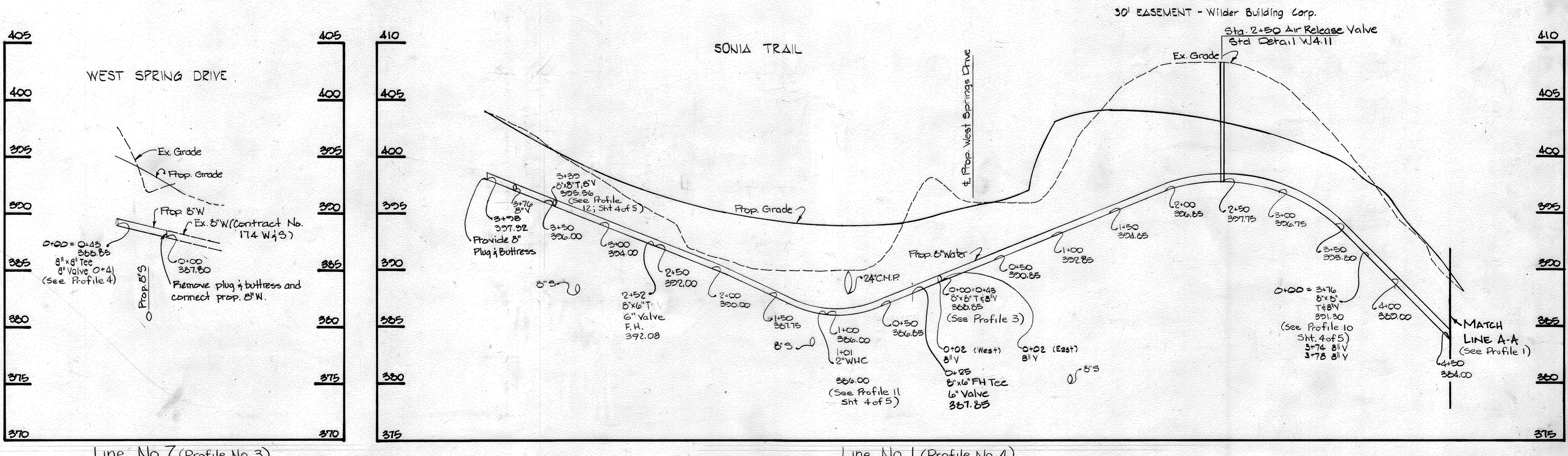
PLAN
WATER AND SEWER MAINS
600' SCALE MAP NO. _____
BLOCK NO. _____

PARCELS A-2, A-3 & A-1
WILDER PROPERTY
A PORTION OF A PORTION OF PARCEL A-1, HONES PROPERTY
WEST SPRING DRIVE, ELLICOTT CITY
SECOND ELECTION DISTRICT HOWARD COUNTY, MARYLAND
CONTRACT NO. 14-1526-D, F-86-160, SDP-86-214
SCALE AS SHOWN
SHEET 2 OF 5



Line No. 1 (Profile No. 1)

Line No. 1 (Profile No. 2)

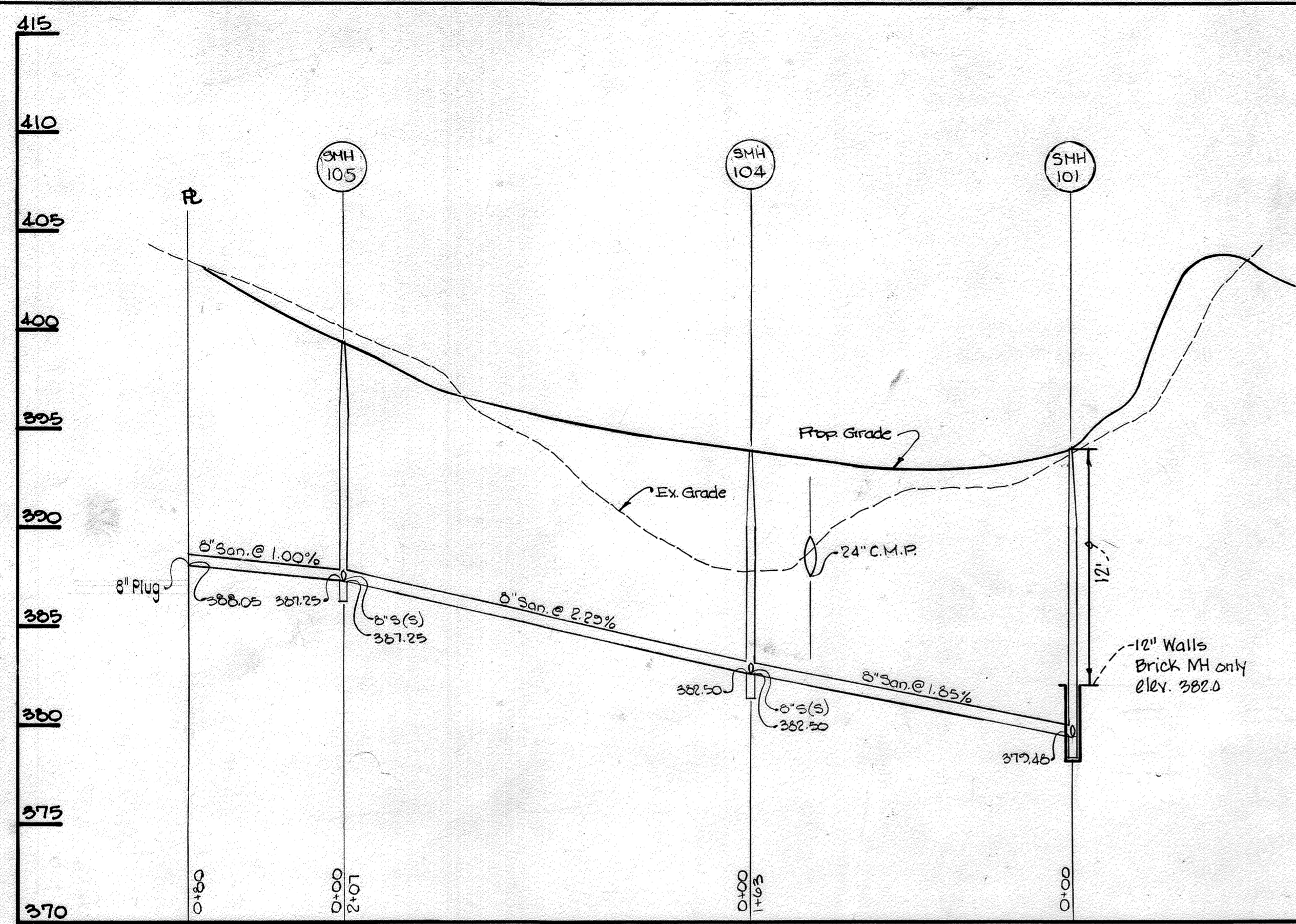


Line No. 7 (Profile No. 3)

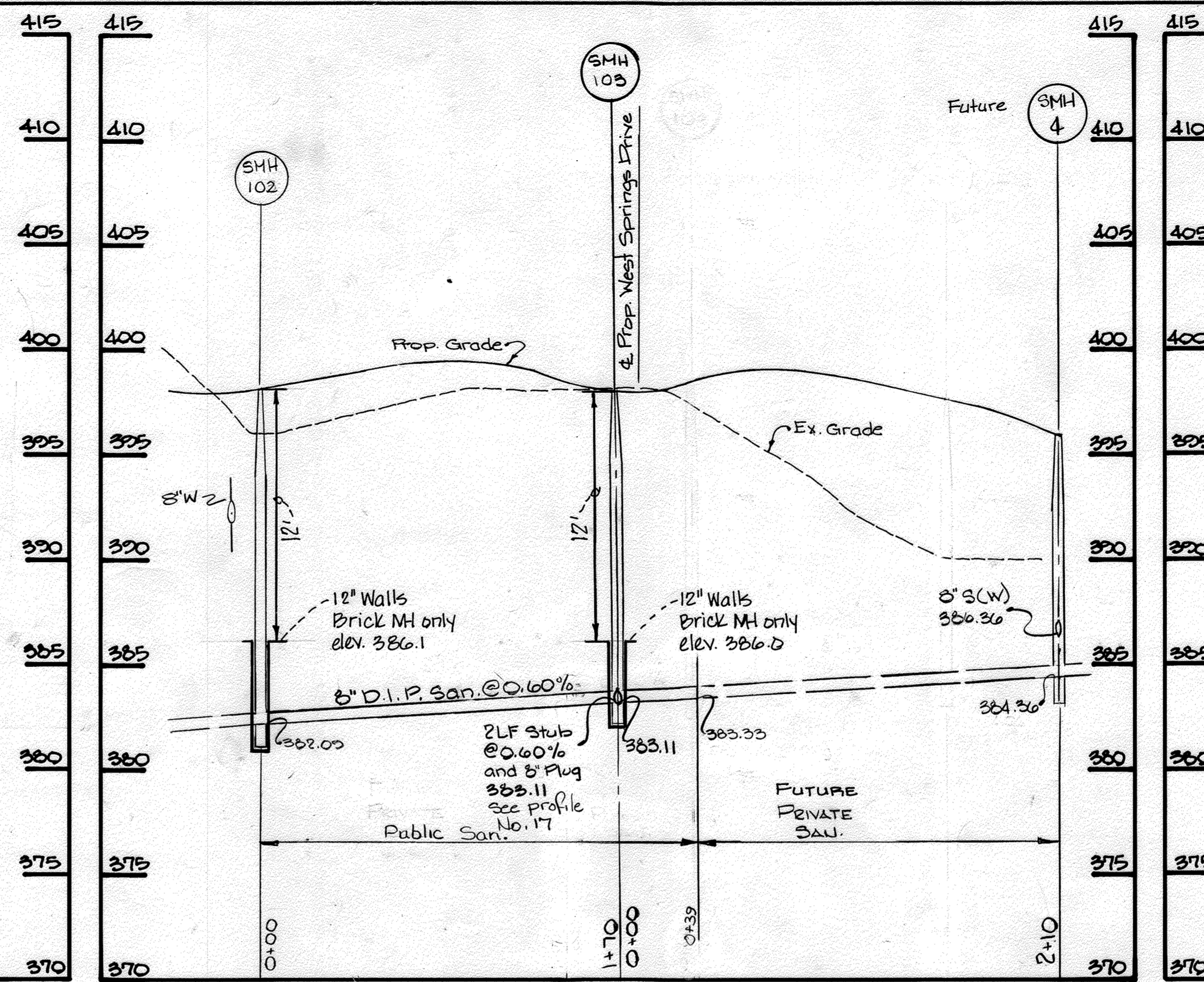
Line No. 1 (Profile No. 4)

Scale: 1" = 50' Hor.
1" = 5' Ver.

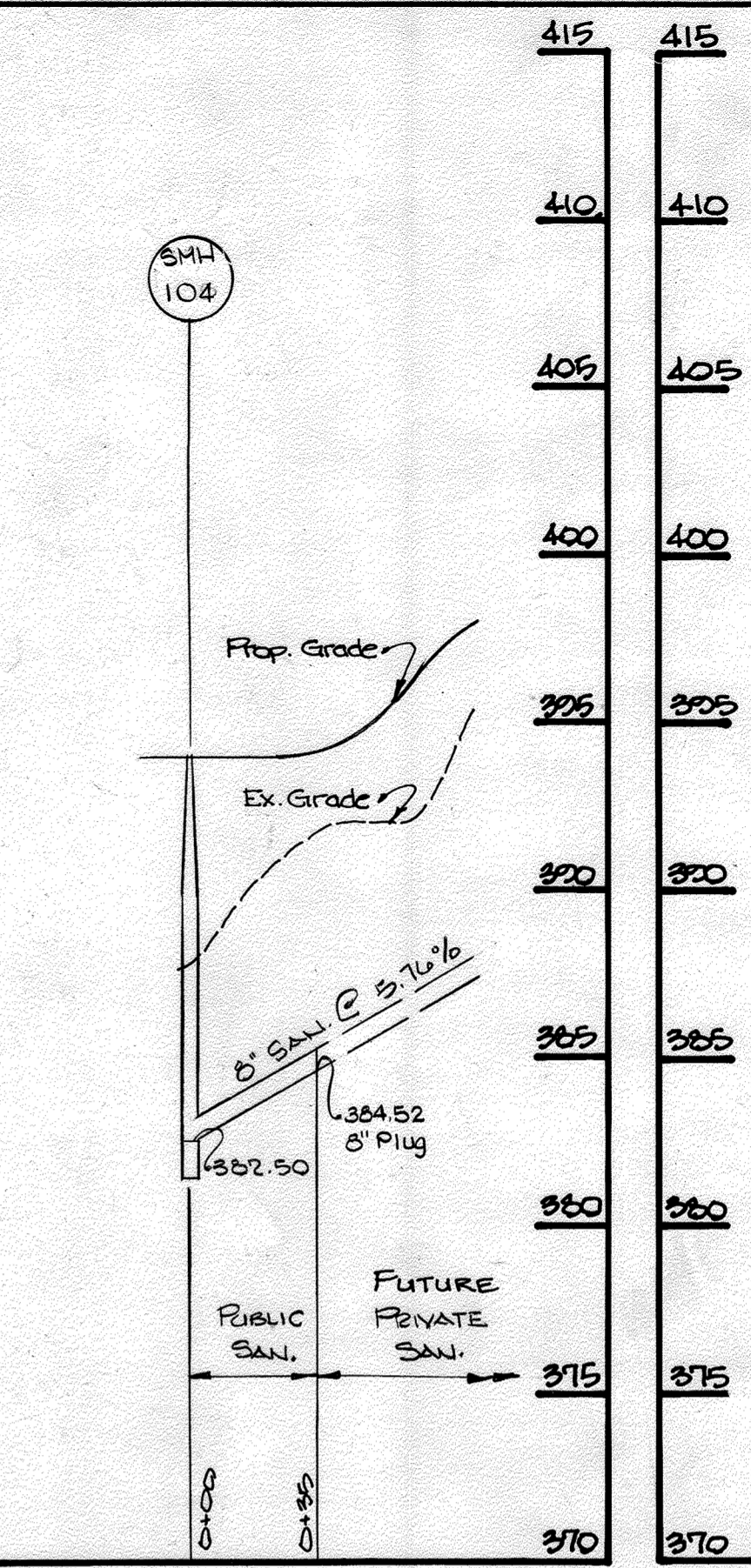
DEPARTMENT OF PUBLIC WORKS HOWARD COUNTY, MARYLAND Director of Public Works: <i>Robert M. Bailey</i> 3-9-97 Chief, Bureau of Utilities	PURDUM & JESCHKE ENGINEERS 1029 N. CALVERT ST. BALTIMORE, MARYLAND		DES: ATR					PARCELS A-2, A-3 & A-4 WILDER PROPERTY A PORTION OF A PORTION OF PARCEL A-1, HOCHES PROPERTY WEST SPRING DRIVE, ELLICOTT CITY SECOND ELECTION DISTRICT HOWARD COUNTY, MARYLAND CONTRACT NO. 14-1526-D, F-86-160, SDP-86-214	SCALE H. 1" = 50' V. 1" = 5'
			Chief, Bureau of Engineering: <i>William R. Reay</i> 3-16-87 Chief, Land Development Div.: <i>William R. Reay</i> 3-16-87	DRN: TDE					
			CHK: WGR						
			DATE:	BY:	NO.	REVISION	DATE	600 SCALE MAP NO.	BLOCK NO.



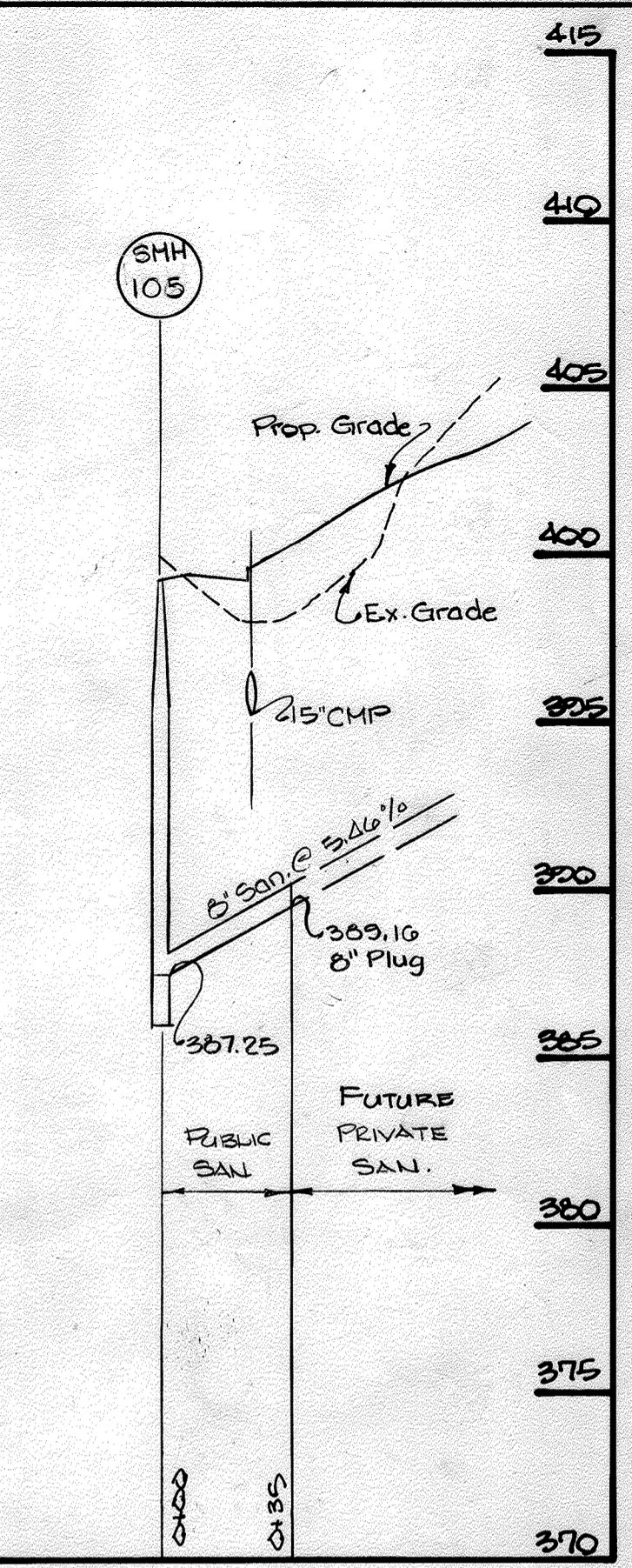
Profile No. 5



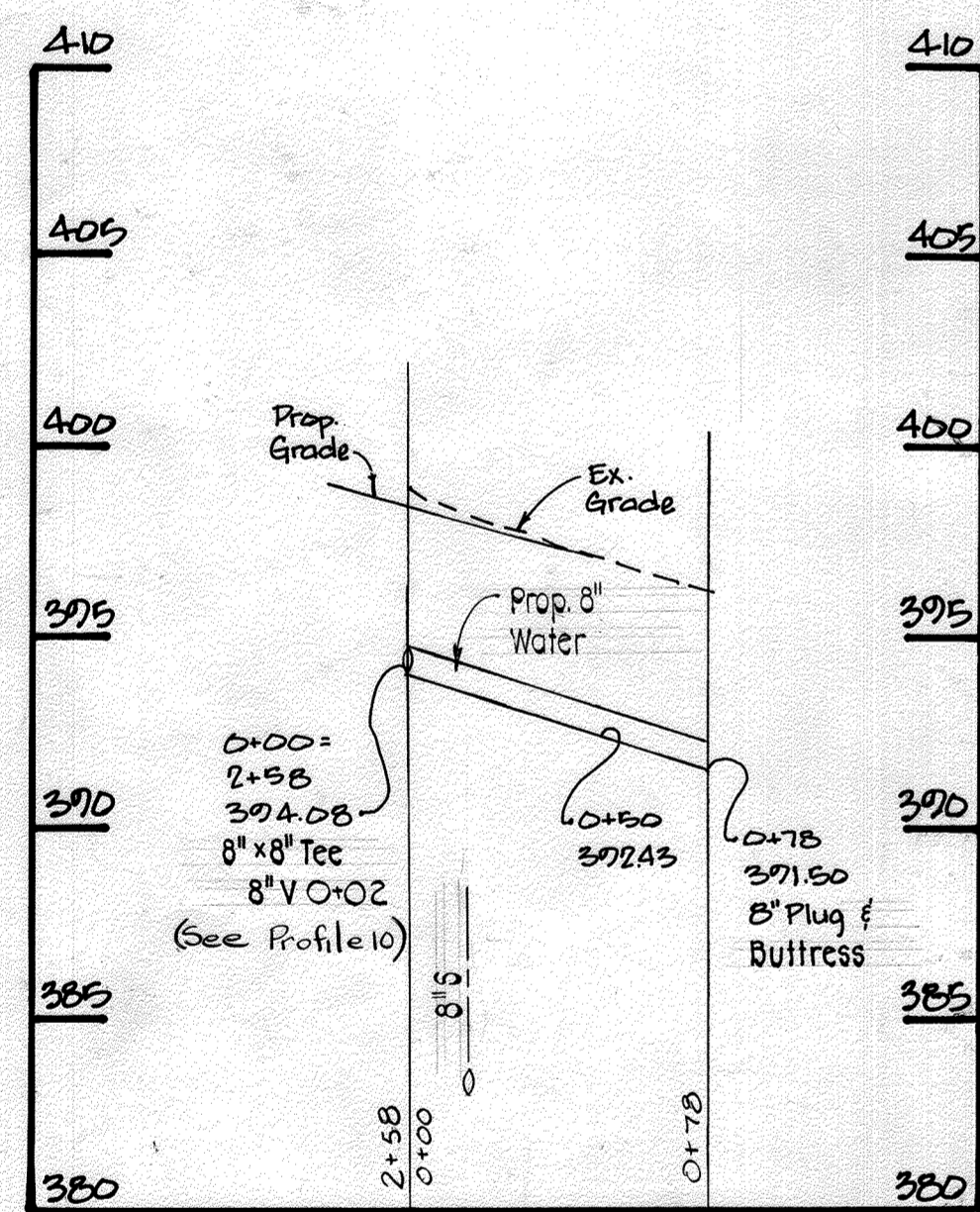
Profile No. 6



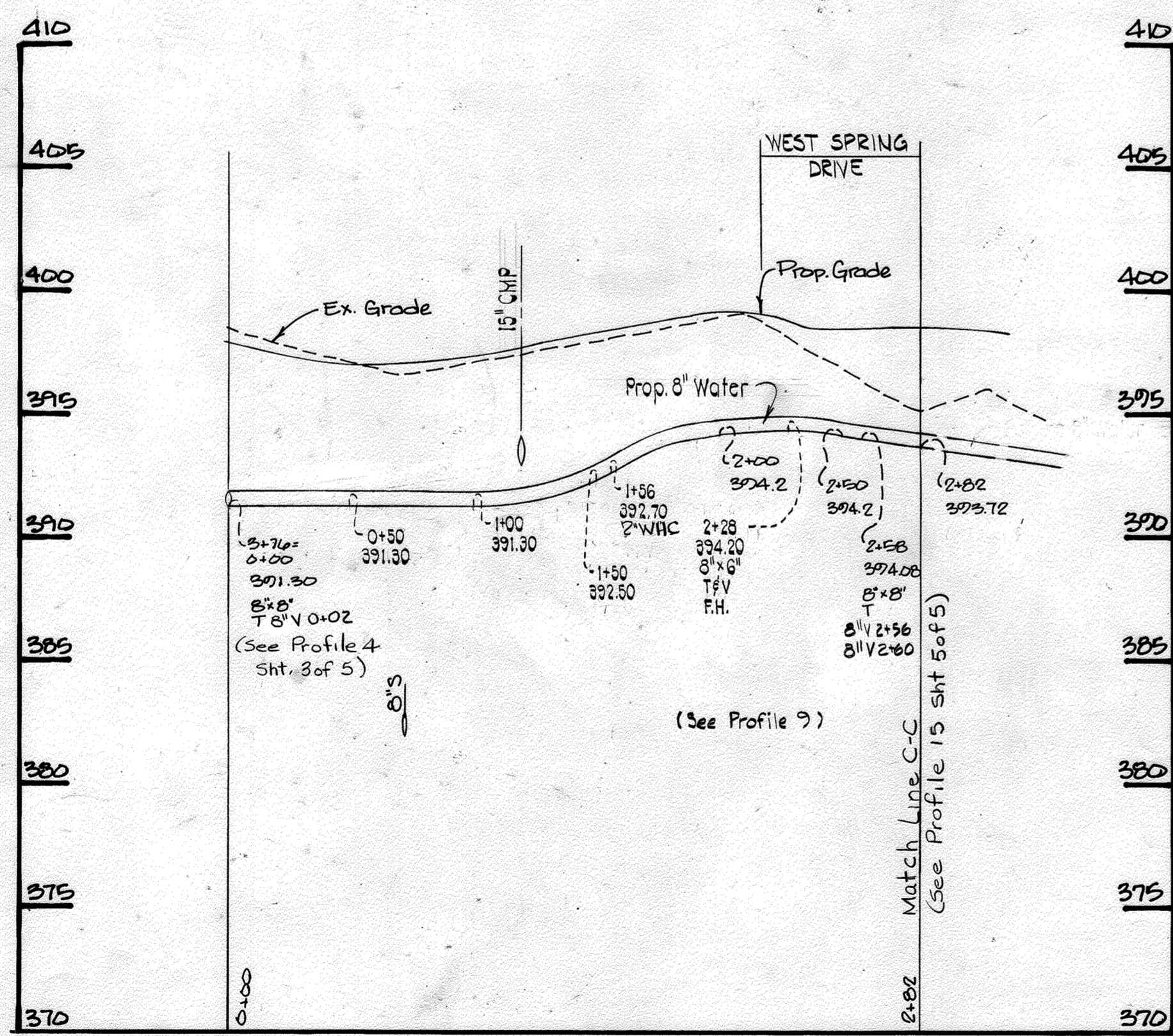
Profile No. 7



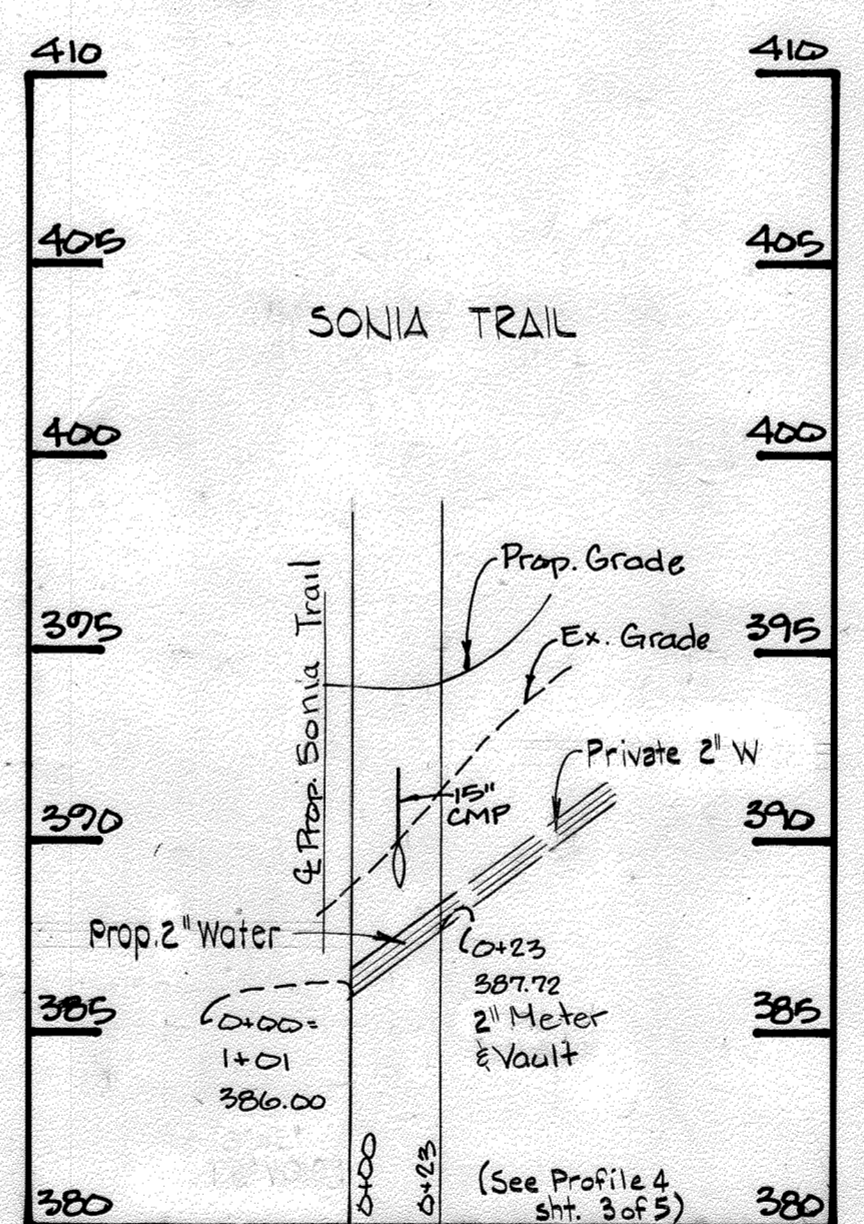
Profile No. 8



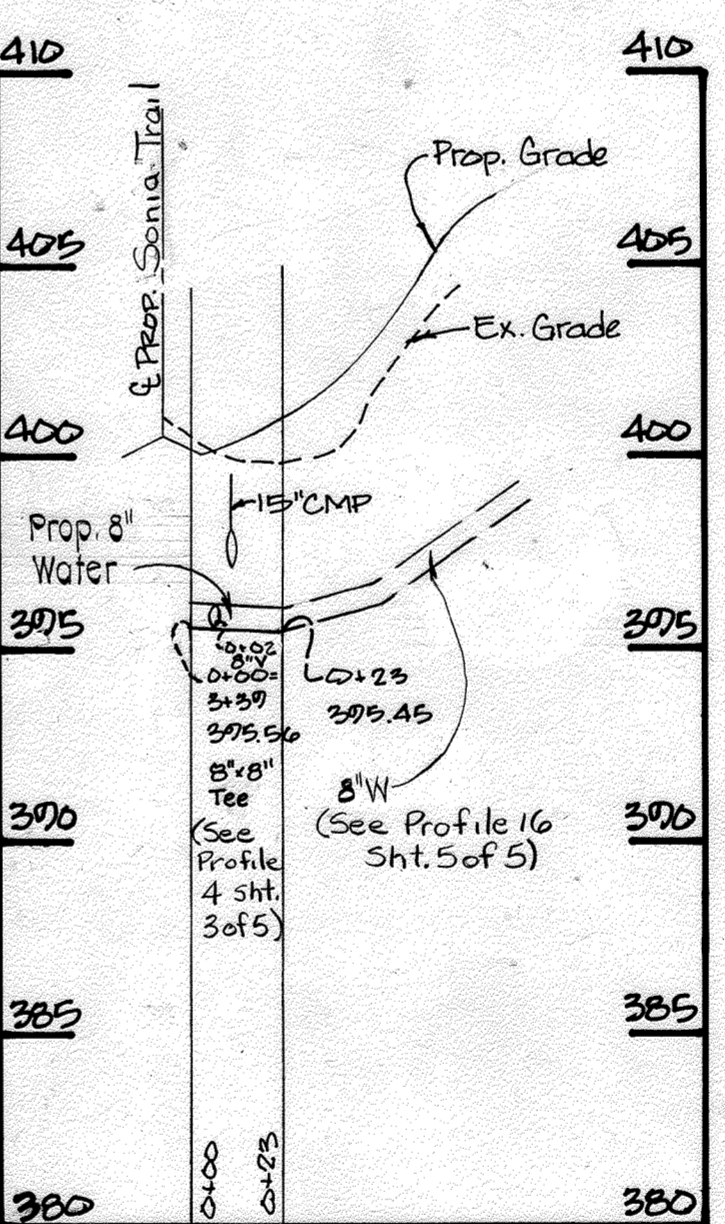
Line No. 9 (Profile No. 9)



Line No. 6 (Profile No. 10)



Line No. 8 (Profile No. 11)



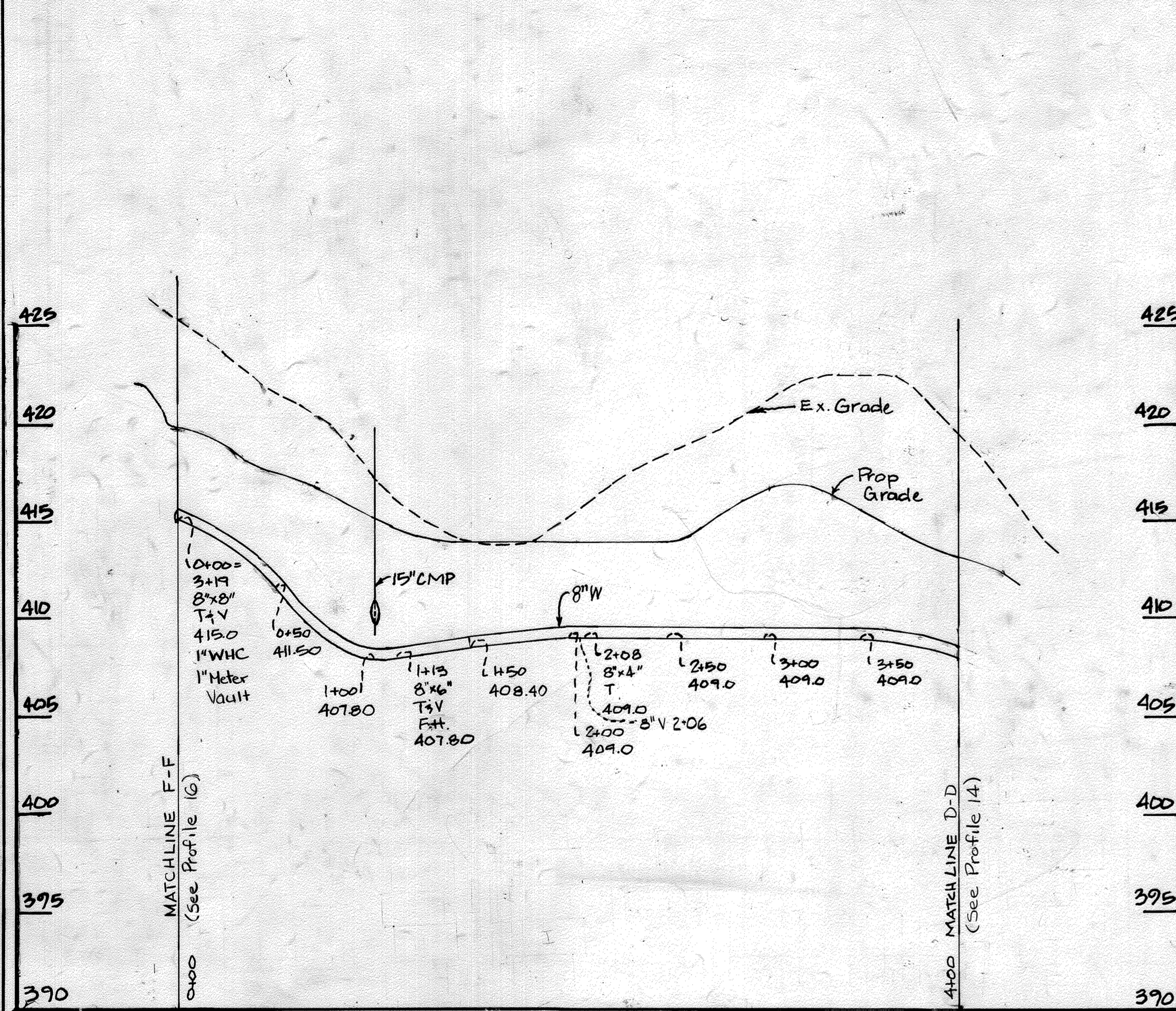
Line No. 2 (Profile No. 12)

SEWER HOUSE CONNECTION INVERTS

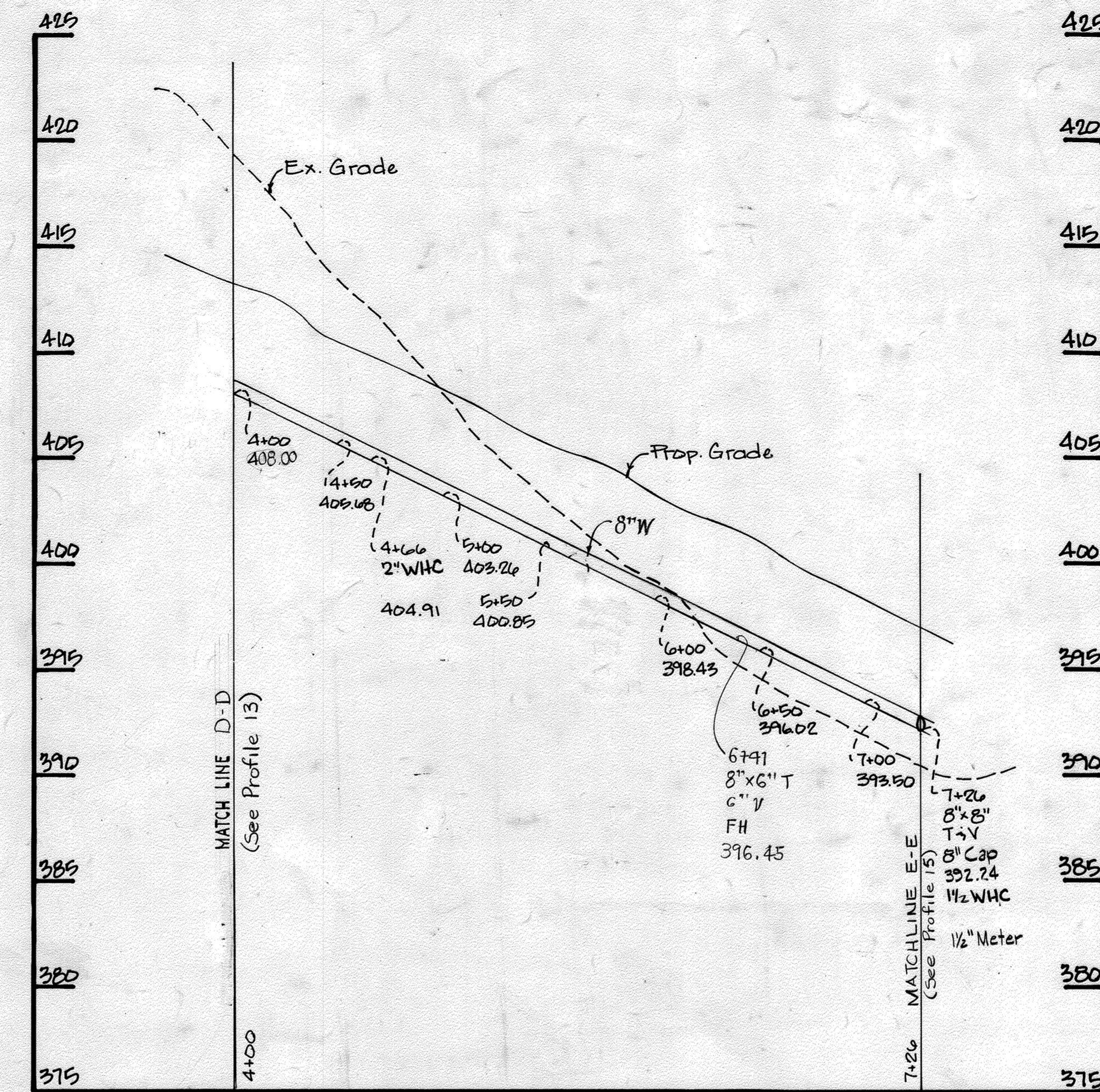
UNIT NO.	INVERT	UNIT NO.	INVERT
1	399.14	54,55	405.69
2	396.34	56,57	405.69
3	392.90	58	406.36
4	395.64	59	408.58
5	388.31	60,61	408.70
6,7	387.73	62,63	410.03
8,9	387.06	64,65	412.05
10	387.18	66	415.40
11	385.09	67	409.51
12,13	384.97	68,69	406.83
14	384.96	70,71	404.82
15	389.56	72,73	403.48
16,17	389.68	74	403.36
18,19	391.68	75	399.82
20,21	393.03	76,77	397.81
22	395.04	78	397.93
23	398.19	79	392.32
24,25	398.73	80,81	393.10
26,27	398.87	82,83	394.45
28	400.75	84	397.13
29	406.71	85	393.36
30	403.06	86,87	391.35
31	403.06	88,89	389.34
32,33	403.18	90,91	389.46
34,35	403.06	92,93	389.90
36,37	403.06	94,95	391.91
38,39	403.18	96	393.92
40,41	403.06	97	402.06
42	403.18	98,99	402.18
43	405.58	100,101	402.85
44,45	405.70	102,103	403.40
46,47	408.38	104,105	403.35
48,49	408.26	106,107	403.47
50	408.38	108,109	403.35
51	405.14	110,111	402.68
52,53	405.02	112	402.80

Invert given is 5' from unit or at Y connection if joint use.

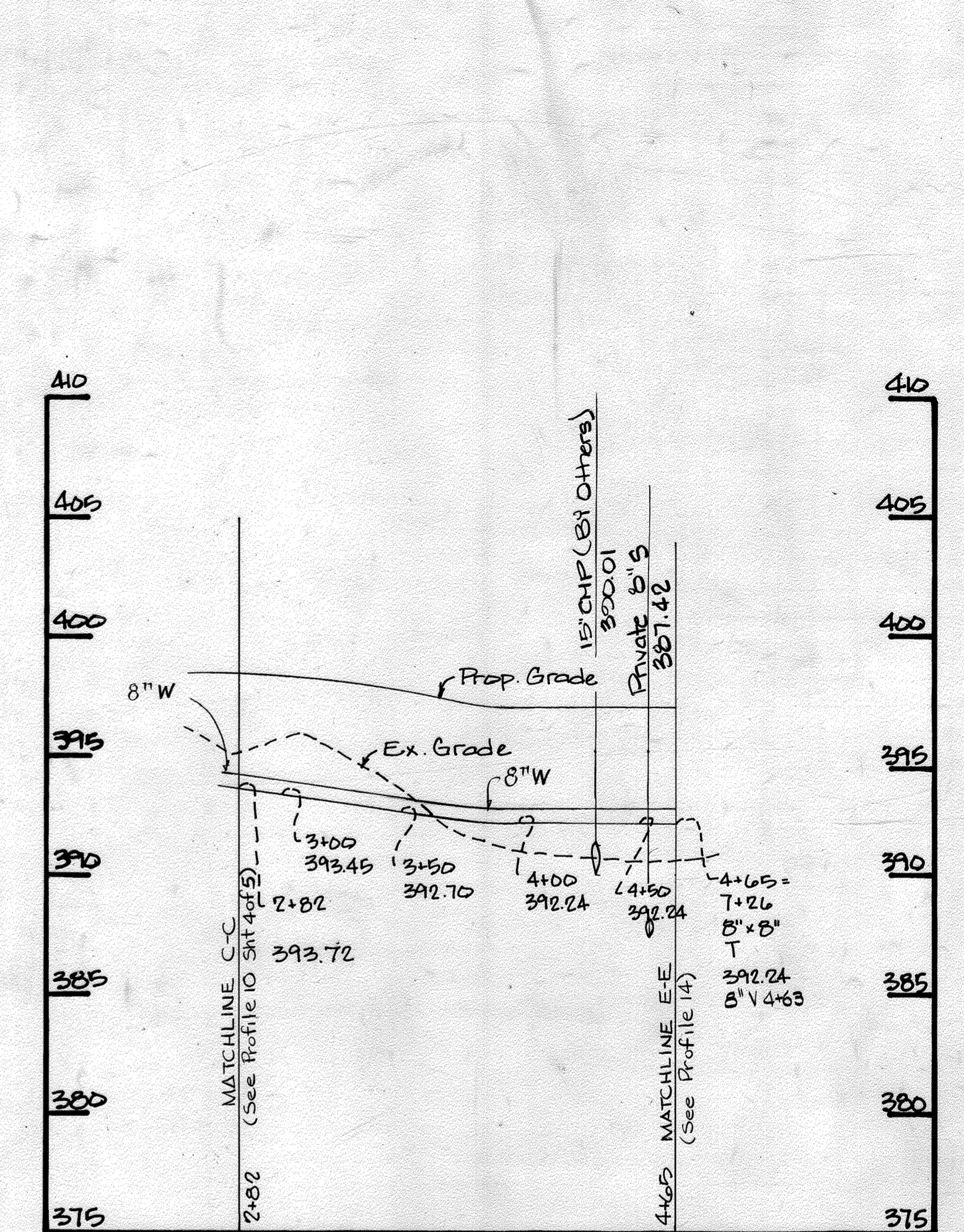
DEPARTMENT OF PUBLIC WORKS HOWARD COUNTY, MARYLAND Director of Public Works: <i>Robert F. Neumann</i> 3-17-17 Chief, Bureau of Engineering: <i>William E. P. ...</i> 3-16-87 Chief, Bureau of Utilities: <i>Robert F. ...</i> 3-9-87 Chief, Land Development Div.: <i>...</i>	PURDUM & JESCHKE ENGINEERS 1029 N. CALVERT ST. BALTIMORE, MARYLAND		DES: ATR				PROFILES WATER & SEWER MAINS	PARCELS A-2, A-3 & A-4 WILDER PROPERTY A PORTION OF A PORTION OF PARCEL A-1, HOENES PROPERTY WEST SPRING DRIVE, ELLICOTT CITY SECOND ELECTION DISTRICT HOWARD COUNTY, MARYLAND CONTRACT NO. 14-1526-D, F-86-160, SDP-86-214	SCALE H. 1"=50' V. 1"=5'
			DRN: TDE						SHEET 4 of 5
			CHK: WGR						
			DATE:	BY	NO.	REVISION	DATE	600' SCALE MAP NO.	BLOCK NO.



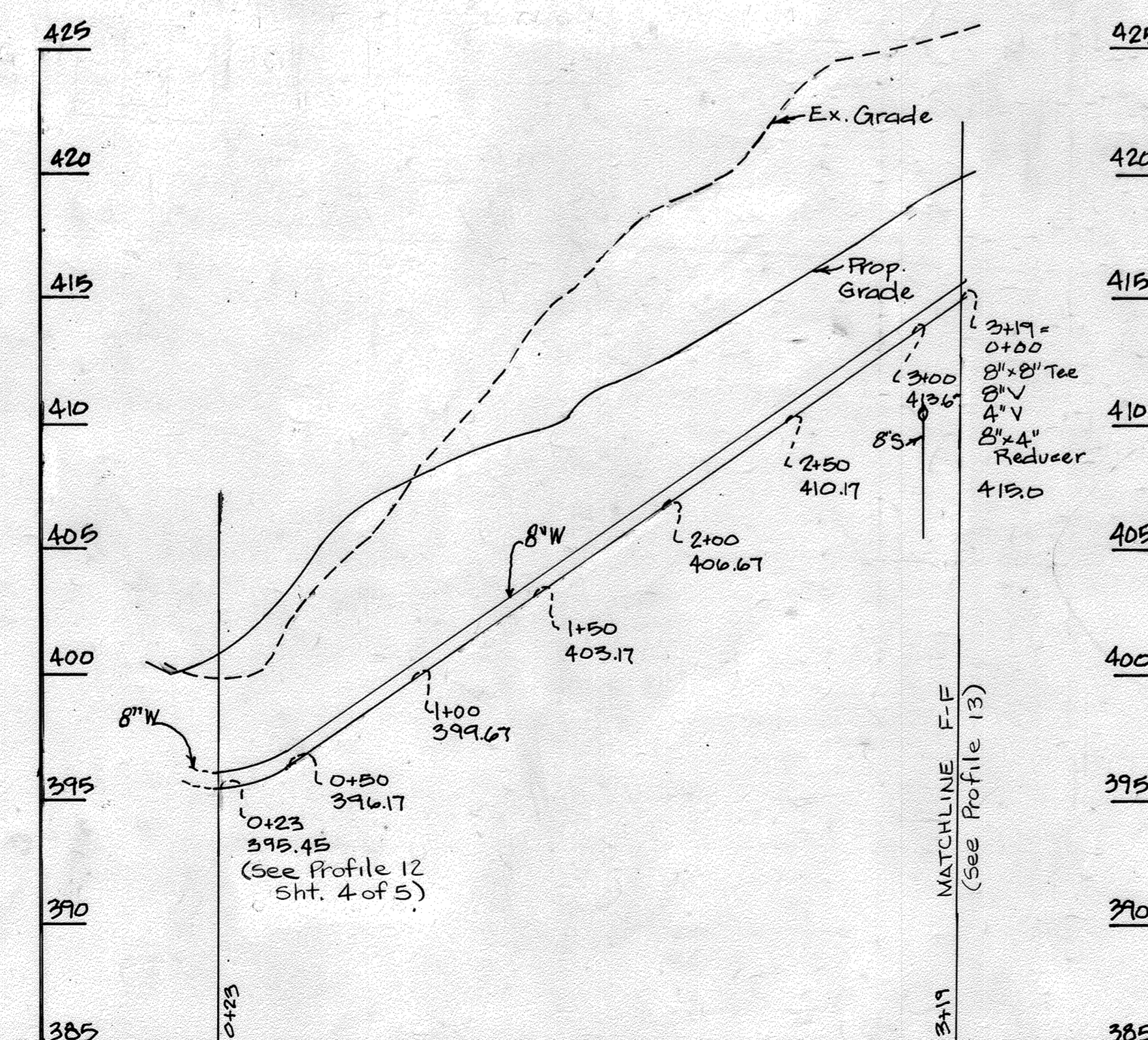
WEST-EAST PROFILE
Line No. 4 (Profile No. 13)
Scale: Horiz. 1"=50'
Vert. 1"=5'



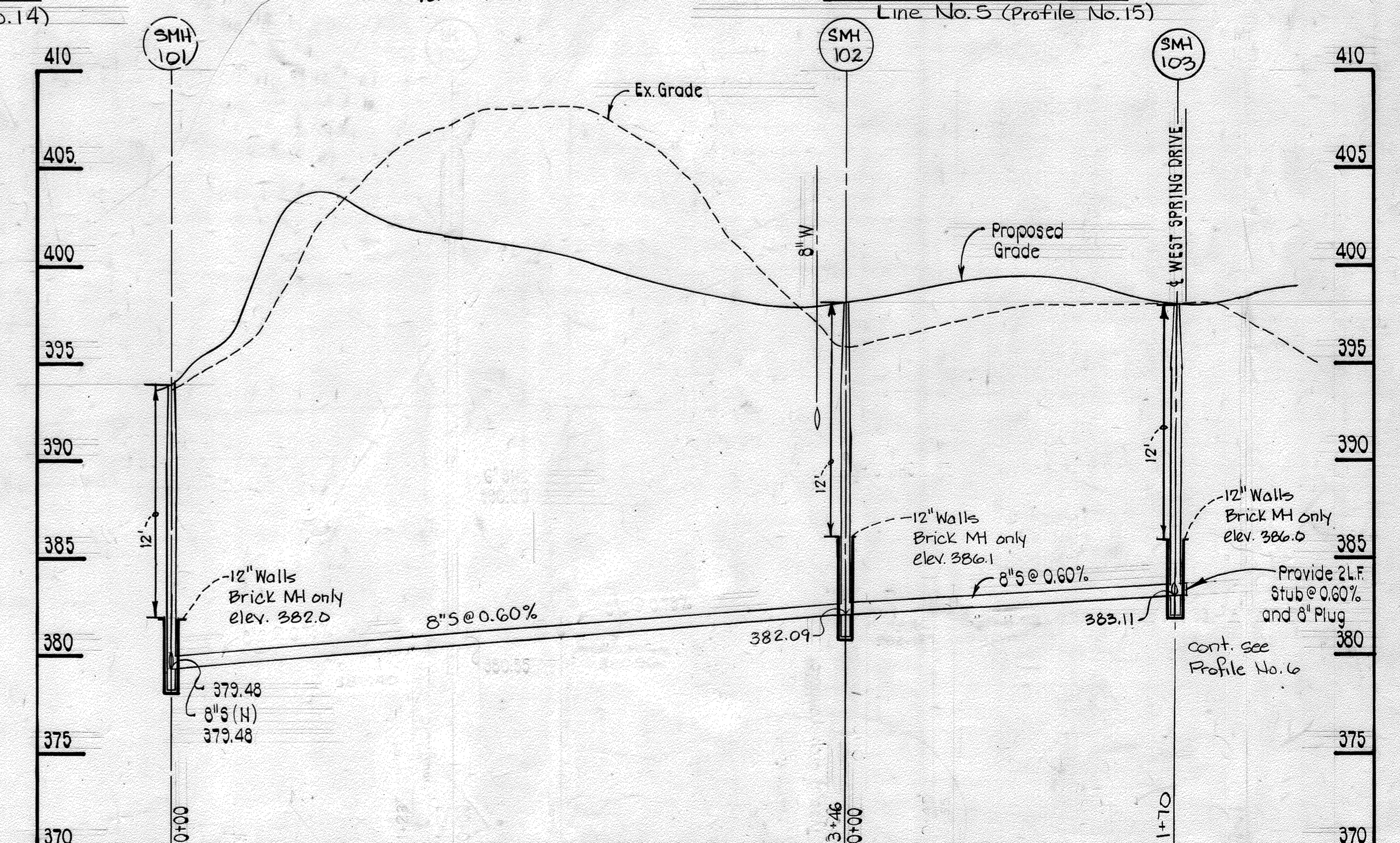
WEST-EAST PROFILE
Line No. 4 (Profile No. 14)
Scale: Horiz. 1"=50'
Vert. 1"=5'



NORTH-SOUTH PROFILE
Line No. 5 (Profile No. 15)



NORTH-SOUTH PROFILE
Line No. 3 (Profile No. 16)
Scale: Horiz. 1"=50'
Vert. 1"=5'



Profile No. 17

DEPARTMENT OF PUBLIC WORKS
HOWARD COUNTY, MARYLAND
Director of Public Works: *Robert A. Boring* 3-7-87
Chief, Bureau of Utilities: *Robert A. Boring* 3-7-87

PURDUM & JESCHKE
ENGINEERS
1029 N. CALVERT ST.
BALTIMORE, MARYLAND
Chief, Land Development Div.: *William P. Jones* 3-16-87



DES:	
DRN:	
CHK:	
DATE:	
BY	NO.
REVISION	
DATE	

PLAN
WATER MAINS
600' SCALE MAP NO. _____
BLOCK NO. _____

PARCELS A-2, A-3 & A-4
WILDER PROPERTY
A PORTION OF A PORTION OF PARCEL A-1, HOWES PROPERTY
WEST SPRING DRIVE, ELLICOTT CITY
SECOND ELECTION DISTRICT HOWARD COUNTY, MARYLAND
CONTRACT NO. 14-1526-D, F-86-160, SDP-86-214

SCALE
H. 1"=50'
V. 1"=5'
SHEET
5 OF 5A

SEWER AS BUILT

Lot #1 (12 UNITS)	AIR RELEASE VALVE STA: 2150	110'	Lot #83 Townhouse	6" S.H.C. lot #82	39.5'
" " "	6" PRIVATE S.H.C. lot #2 (12 UNITS)	75'	Lot #84 Townhouse	8" PRIVATE SEWER LINE Manhole #14A	18'
Lot #2 (12 UNITS)	AIR RELEASE VALVE STA: 2150	74'			
Lot #3 (12 UNITS)	Manhole #102	13'	NOTE: Lots #85 thru #96 NO AS-BUILT SHOWN (PRIVATE LINE)		
" " "	6" PRIVATE S.H.C. lot #4 (12 UNITS)	39'	" lots #97 thru #112 " " " " " "		
Lot #4 (12 UNITS)	Manhole #102	47'			
Lot #5 Townhouse	Manhole #103	54'	NOTE: PRIVATE SEWER LINE MANHOLES NUMBERED ON PLAN VIEW		
" " "	STORM DRAIN INLET STA 4125±	103'			
Lot #6 Townhouse	6" S.H.C. lot #7	40'			
Lot #7 Townhouse	Manhole #103	94'			
Lot #8 Townhouse	STORM DRAIN INLET STA: 4125±	62'			
" " "	6" S.H.C. lot #9	31'	*NOTE: ADDITIONAL AS-BUILTS ON SEWER 2-23-89 M.M.W.		
Lot #10 Townhouse	STORM DRAIN INLET STA: 4125±	32'			
" " "	Manhole #4 6" PRIVATE SEWER LINE	52'			
Lot #11 Townhouse	" " " " " "	16'	Lot #9 Townhouse	Manhole #4	8.5'
Lot #12 Townhouse	8" VALVE STA: 7126± 4165	35.5'	Lot #17 Townhouse	FIRE HYDRANT STA: 6141±	63.9'
Lot #13 Townhouse	1 1/2" WATER METER VAULT STA: 7126± 4165±	31'	Lot #19 Townhouse	6" VALVE STA: 6141±	24.3'
Lot #14 Townhouse	MANHOLE #5 6" PRIVATE SEWER LINE	10'	Lot #29 Townhouse	1/2" WATER METER VAULT	27'
Lot #15 Townhouse	8" VALVE STA 7126± 4165	15'	Lot #49 Townhouse	Manhole #10	110.2'
Lot #16 Townhouse	FIRE HYDRANT 6141 STA	78'	Lot #49 Townhouse	Manhole #11	81.9'
" " "	6" S.H.C. lot #17	31'	Lot #57 Townhouse	FIRE HYDRANT STA: 1113±	39.6'
Lot #18 Townhouse	FIRE HYDRANT STA: 6141±	50'	Lot #61 Townhouse	" " "	58.3'
" " "	6" S.H.C. lot #19	23'	Lot #65 Townhouse	Manhole #13	13.3'
Lot #20 Townhouse	6" S.H.C. lot #21	38'	Lot #66 Townhouse	" " "	20.4'
" " "	6" VALVE STA: 6141±	8'	Lot #69 Townhouse	Manhole #15	31'
Lot #21 Townhouse	" " " " " "	37'	Lot #71 Townhouse	Manhole #14A	62.8'
Lot #22 Townhouse	6" S.H.C. lot #23	50'	Lot #73 Townhouse	" " "	32.4'
Lot #23 Townhouse	6" VALVE STA 6141±	87'	Lot #75 Townhouse	" " "	29.1'
Lot #24 Townhouse	8" PRIVATE SEWER LINE Manhole #12	107'			
" " "	6" S.H.C. lot #25	35'			
Lot #25 Townhouse	8" PRIVATE SEWER LINE Manhole #12	74'			
Lot #26 Townhouse	6" S.H.C. lot #27	34'			
Lot #27 Townhouse	8" PRIVATE SEWER LINE Manhole #12	41'			
Lot #28 Townhouse	6" PRIVATE lot #29 S.H.C.	36.5'			
Lot #29 Townhouse	1 1/2" WATER METER VAULT STA: 4125±	NO DISTANCE			
Lot #30 Townhouse	8" PRIVATE SEWER LINE Manhole #12	17'			
NOTE: Lots #31 thru #42	NO AS-BUILT SHOWN (PRIVATE LINE)				
Lot #43 Townhouse	8" PRIVATE SEWER LINE Manhole #12	53'			
Lot #44 Townhouse	6" S.H.C. lot #45	54'			
Lot #45 Townhouse	8" PRIVATE SEWER LINE Manhole #12	87'			
Lot #46 Townhouse	6" S.H.C. lot #47	33'			
Lot #48 Townhouse	8" PRIVATE SEWER LINE Manhole #11	101'			
" " "	6" S.H.C. lot #49	37'			
Lot #50 Townhouse	8" PRIVATE SEWER LINE Manhole #11	68'			
" " "	6" S.H.C. lot #51	30'			
Lot #51 Townhouse	8" PRIVATE SEWER LINE Manhole #11	26'			
Lot #52 Townhouse	8" VALVE STA: 2103 ± 0100 ±	35'			
Lot #53 Townhouse	" " " " " "	7'			
Lot #54 Townhouse	6" S.H.C. lot #55	35'			
Lot #55 Townhouse	8" VALVE STA: 2103 ± 0100 ±	10.4'			
Lot #56 Townhouse	6" VALVE STA: 1113 ±	51'			
Lot #56 Townhouse	6" S.H.C. lot #57	37'			
Lot #58 Townhouse	6" VALVE STA: 1113 ±	16.5'			
Lot #58 Townhouse	6" S.H.C. lot #59	49'			
Lot #59 Townhouse	FIRE HYDRANT STA: 1113 ±	48'			
Lot #60 Townhouse	8" VALVE STA: 0100 ± 3119 ±	81'			
" " "	6" S.H.C. lot #61	NO DISTANCE			
Lot #62 Townhouse	8" VALVE STA: 0100 ± 3119 ±	45'			
" " "	6" S.H.C. lot #63	NO DISTANCE			
Lot #63 Townhouse	8" VALVE STA: 0100 ± 3119 ±	8'			
Lot #64 Townhouse	1" METER VAULT STA: 0105 ±	16'			
Lot #65 Townhouse	NO INFORMATION AVAILABLE				
Lot #66 Townhouse	" " " " " "				
Lot #67 Townhouse	8" VALVE STA: 0100 ± 3119 ±	43.6'			
Lot #68 Townhouse	8" PRIVATE SEWER LINE Manhole #14A	121'			
" " "	6" S.H.C. lot #69	39'			
Lot #70 Townhouse	8" PRIVATE SEWER LINE Manhole #14A	85'			
" " "	6" S.H.C. lot #71	34'			
Lot #72 Townhouse	8" PRIVATE SEWER LINE Manhole #14A	53'			
" " "	6" S.H.C. lot #73	36'			
Lot #74 Townhouse	8" PRIVATE SEWER LINE Manhole #14A	26'			
" " "	6" S.H.C. lot #75	56'			
Lot #76 Townhouse	8" PRIVATE SEWER LINE Manhole #14A	51'			
" " "	6" S.H.C. lot #77	33'			
Lot #77 Townhouse	8" PRIVATE SEWER LINE Manhole #14A	82'			
" " "	6" S.H.C. lot #81	48'			
Lot #78 Townhouse	8" VALVE STA: 3139 ± 0100 ±	71'			
" " "	6" S.H.C. lot #79	39'			
Lot #79 Townhouse	8" VALVE STA: 3139 ± 0100 ±	75.5'			
Lot #80 Townhouse	6" S.H.C. lot #81	35'			
Lot #81 Townhouse	6" S.H.C. lot #77	49'			
Lot #82 Townhouse	8" PRIVATE SEWER LINE Manhole #14A	53'			

WATER AS BUILT

8" VALVES	8" VALVE #1	6'
8" VALVE #1	8" VALVE #2 STA: 3176±	6'
8" VALVE #2	8" VALVE #3 STA: 0100	5'
8" VALVE #3	8" VALVE #1 STA: 3176±	4'
AIR RELEASE VALVE STA 2150	8" VALVE #1 STA: 3176±	118'
" " " " " "	8" VALVE #3 STA: 0100±	121'
" " " " " "	Manhole #102	68.5'
8" VALVE #2	" " " " " "	65'
8" VALVE #3	" " " " " "	53'
2" W.H.C. lot #3	Manhole #102	16'
" " " " " "	6" PRIVATE S.H.C. lot #3 (12 UNITS)	28'
" " " " " "	2" W.H.C. lot #4 (12 UNITS)	34'
2" WATER METER VAULT	FIRE HYDRANT STA 2128±	80'
" " " " " "	" " " " " "	85.7'
2" W.H.C. lot #4 (12 UNITS)	" " " " " "	18'
FIRE HYDRANT STA: 2128	6" VALVE STA: 2128	
8" VALVES	6" VALVE STA: 2128	26'
8" VALVE #1	FIRE HYDRANT STA: 2128±	32.6'
" " " " " "	Manhole #103	9'
8" VALVE #2	FIRE HYDRANT STA: 2128±	35.5'
8" VALVE #3	Manhole #103	20'
" " " " " "	" " " " " "	47.5'
FIRE HYDRANT STA: 2128	1 1/2" Water Meter STA: 7126± 4165±	12'
8" VALVE STA: 7126± 4165	6" PRIVATE SEWER LINE Manhole #5	39'
1 1/2" WATER METER	" " " " " "	215'
8" VALVE STA: 7126± 4165	FIRE HYDRANT STA: 6141±	89'
" " " " " "	6" VALVE STA: 6141±	NO DISTANCE
FIRE HYDRANT STA: 6141±	8" PRIVATE SEWER Manhole #11	19.51'
3" METER VAULT STA: 2105±	" " " " " "	25'
8" VALVE STA: 2105±	" " " " " "	21'
" " " " " "	3" Meter Vault STA: 2105±	92'
3" Meter Vault STA: 2105±	FIRE HYDRANT STA 1113±	95'
8" VALVE STA: 2105±	" " " " " "	90.5'
" " " " " "	" " " " " "	25'
FIRE HYDRANT STA: 1113±	8" PRIVATE SEWER Manhole #15	51'
8" VALVE STA: 0100± 3119 ±	" " " " " "	34'
" " " " " "	Manhole #13	8'
" " " " " "	1" VALVE STA: 0105 ±	NO DISTANCE
8" VALVE STA: 3139± 0100 ±	8" PRIVATE SEWER LINE Manhole #13	69'
" " " " " "	8" Plug Sonia Trail	28'
" " " " " "	Manhole #105	84'
" " " " " "	FIRE HYDRANT STA: 2152	81'
8" Plug Sonia Trail	Manhole #105	13.6'
FIRE HYDRANT STA: 2152	6" VALVE	69'
" " " " " "	Manhole #105	64.5'
6" VALVE STA: 2152	" " " " " "	84'
FIRE HYDRANT STA: 2152	8" VALVE STA: 3139± 0100 ±	39'
2" METER VAULT STA: 1101± 0100 ±	Manhole #104	93'
" " " " " "	" " " " " "	93'
" " " " " "	6" VALVE STA: 0105 ±	13.5'
FIRE HYDRANT STA: 0105 ±	Manhole #104	87'
" " " " " "	Manhole #101	64'
6" VALVE	" " " " " "	
FIRE HYDRANT STA: 0105 ±	6" VALVE STA: 0125±	13.6'
8" VALVES	" " " " " "	20'
8" VALVE #2	" " " " " "	24'
" " " " " "	" " " " " "	24'
8" VALVE #1	" " " " " "	65.5'
8" VALVE #3	Manhole #101	64'
8" VALVE #1	" " " " " "	
8" VALVE #3	" " " " " "	
NOTE: ADDITIONAL AS-BUILTS ON WATER 2-23-89 M.M.W.		
FIRE HYDRANT STA: 6141±	6" F.W. VALVE STA: 6141±	18.4'
1" VALVE STA: 0105 ±	8" PRIVATE SEWER #11 #13	29.7'
FIRE HYDRANT STA: 1113±	6" VALVE STA: 1113±	22.6'

<p>DEPARTMENT OF PUBLIC WORKS HOWARD COUNTY, MARYLAND</p> <p>DIRECTOR OF PUBLIC WORKS _____ DATE _____ CHIEF, BUREAU OF ENGINEERING _____ DATE _____</p>		<p>DES: _____</p> <p>DRN: _____</p> <p>CHK: _____</p> <p>DATE: _____</p>	<p>BY _____ NO. _____ REVISION _____ DATE _____</p>	<p>SEWER & WATER AS BUILT CONTRACT NO. 14-1526-D</p> <p>600' SCALE MAP NO. _____ BLOCK NO. _____</p>	<p>WILDER PROPERTY KATHY WILSON 02-08-89</p>	<p>SCALE AS SHOWN</p> <p>SHEET 5A OF 5A</p>
---	--	--	---	---	---	---