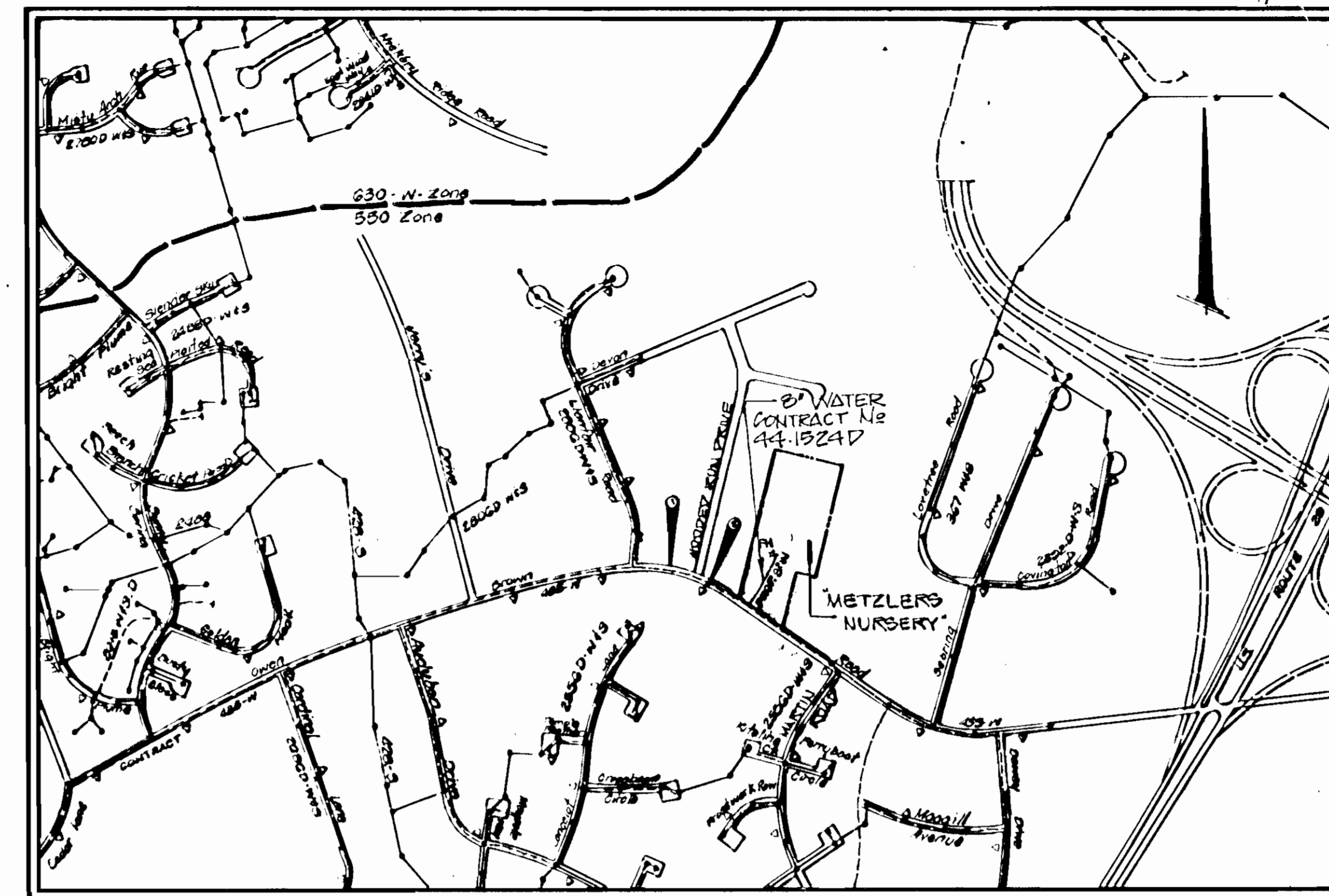


GENERAL NOTES

- Approximate location of existing mains are shown. The contractor shall take all necessary precautions to protect existing mains and services and maintain uninterrupted supply. Any damage incurred shall be repaired immediately to the satisfaction of the Engineer at the Contractor's expense.
- All horizontal controls are based on Maryland State Coordinates.
- All vertical controls are based on U.S.G.S. data.
- All pipe elevations shown are invert elevations.
- Clear all utilities by a minimum of 6". Clear all poles by 2'-0" minimum or tunnel as required. The owner has contacted the utility companies and has made arrangements for bracing of poles as shown on the drawings. In the event the contractor's work requires the bracing of additional poles, any cost incurred by the owner for the bracing of additional poles or jacks shall be deducted from money owed the contractor. The contractor shall coordinate with the utility companies to schedule the bracing of the poles.
- For details not shown on the drawings, and for materials and construction methods, use Howard County Design Manual, Volume IV, Standards Specifications and Details for Construction. The contractor shall have a copy of Volume IV on the job.
- Where test pits have been made on existing utilities, they are noted by the symbol at the location of the test pit. A note or notes containing the results of the test pit or pits is included on the drawings. Existing utilities in the vicinity of the proposed work for which test pits have not been dug shall be located by the contractor two weeks in advance of construction operations at his own expense.
- Contractor shall notify the following utilities or agencies at least five working days before starting work shown on these plans:
 - State Highway Administration - 531-5533
 - Baltimore Gas & Electric Co. - Contractor Services 561-2585
 - Baltimore Gas & Electric Co. Under Ground Damage Control - 234-5621
 - Baltimore Gas & Electric Co. Trouble Shooting - 298-2013
 - Miss Utility - 1-559-0100
 - Colonial Pipeline Co. - 795-1120
 - Bureau of Utilities, Howard County Department of Public Works - 992-2366
- Trees and shrubs are to be protected from damage to maximum extent. Trees and shrubs located within the construction strip are not to be removed or damaged by the contractor.
- Contractor shall remove trees, stumps and roots along line of excavation. Payment for such removal shall be included in the unit price bid for construction of the main.
- No work shall commence prior to approval of Plan F-24-34 and installation of the sediment controls specified therein.
- Water resources permit required for this project.

WATER NOTES

- All water mains to be D.I.P. unless otherwise noted.
- Tops of all water mains to have a minimum of 3-1/2' cover unless otherwise noted.
- Valves adjacent to tees shall be strapped to tees.
- All fittings shall be buttressed or anchored with concrete in accordance with the Standard Details unless otherwise provided for on the drawings.
- Fire hydrants shall be set to the bury line elevations shown on the drawings. All fire hydrants shall be strapped and buttressed with concrete in accordance with Standard Details. Soil around the fire hydrant shall be compacted in accordance with Section 1003 the Standard Specifications.
- The contractor shall not operate any water main valves on the existing water system.



WATER & SEWER CODE FOR COUNTY USE.
WATER NO: E-30
SEWER NO:

VICINITY MAP
SCALE = 1" = 600'

TYPE OF BUILDINGS: METZLERS NURSERY
NUMBER OF LOTS: 1
NUMBER OF WHC: 0
NUMBER OF SHC: 0
DRAINAGE AREA: LITTLE PATENT

METZLERS NURSERY
Cont. No. 44-1524-D
Water
Howard County, Md.
Dept. of Public Works.

QUANTITIES			
ITEM	EST.	AS BUILT	MATERIAL SUPPLIER
8" D.I.P. WATER	329'	327.7'	GRIFFIN
FIRE HYDRANT	1	1	229 F.H. M&H VALVE CO.
16" T.S.V.	1	1	16" T.S.V. CLOW
8" FHT	1	1	8" FHT, GRIFFIN
6" VALVE	1	1	6" M&H VALVE CO.
8" FLUG	1	1	GRIFFIN
20" STEEL SLEEVE	30'	30'	CCLF CONST. CO.
8" D.I.P. WATER		3.25'	GRIFFIN

U & C SALAS
- FINKS SOURCE, MD

BENCH MARKS

- BENCHMARK #1: NAIL IN UTILITY POLE #48120
ELEVATION: 376.57
- BENCHMARK #2: CUT IN RIM OF SEWER M
ELEVATION: 377.53

Sediment Control measures for this contract will be implemented in accordance with the provisions of these specifications and also as shown on the grading and sediment control Plan F-24-34 reviewed for Howard County Soil Conservation District and meets technical requirements. # 337-35-101

John Metzler 7-23-82
U.S. SOIL CONSERVATION SERVICE DATE

This development is approved for erosion and sediment control by the Howard Soil Conservation District.

Approved:
Stephen L. Fisher 7/23/82
HOWARD SOIL CONSERVATION DISTRICT DATE

OWNER
JOHN METZLER
10242 OWEN BROWN RD
COLUMBIA, MARYLAND 21044
301-997-8173

DEVELOPMENT CONSULTANTS GROUP, INC.
11904 Georgia Avenue
Suite 102 Olney, Md. 20832
(301) 924-4570

DEPARTMENT OF PUBLIC WORKS
HOWARD COUNTY, MARYLAND
CHIEF OF PUBLIC WORKS
CHIEF BUREAU OF ENGINEERING
CHIEF LAND DEVELOPMENT DIV.

CONTRACT NO. 44-1524-D

PLAN & PROFILE
WATER
FACILITIES

METZLERS NURSERY
TAX MAP: 36, PARCEL: 152
CLARKSVILLE ELECTION DISTRICT
HOWARD COUNTY, MARYLAND.

DRAWING:
NO. 1
OF 2

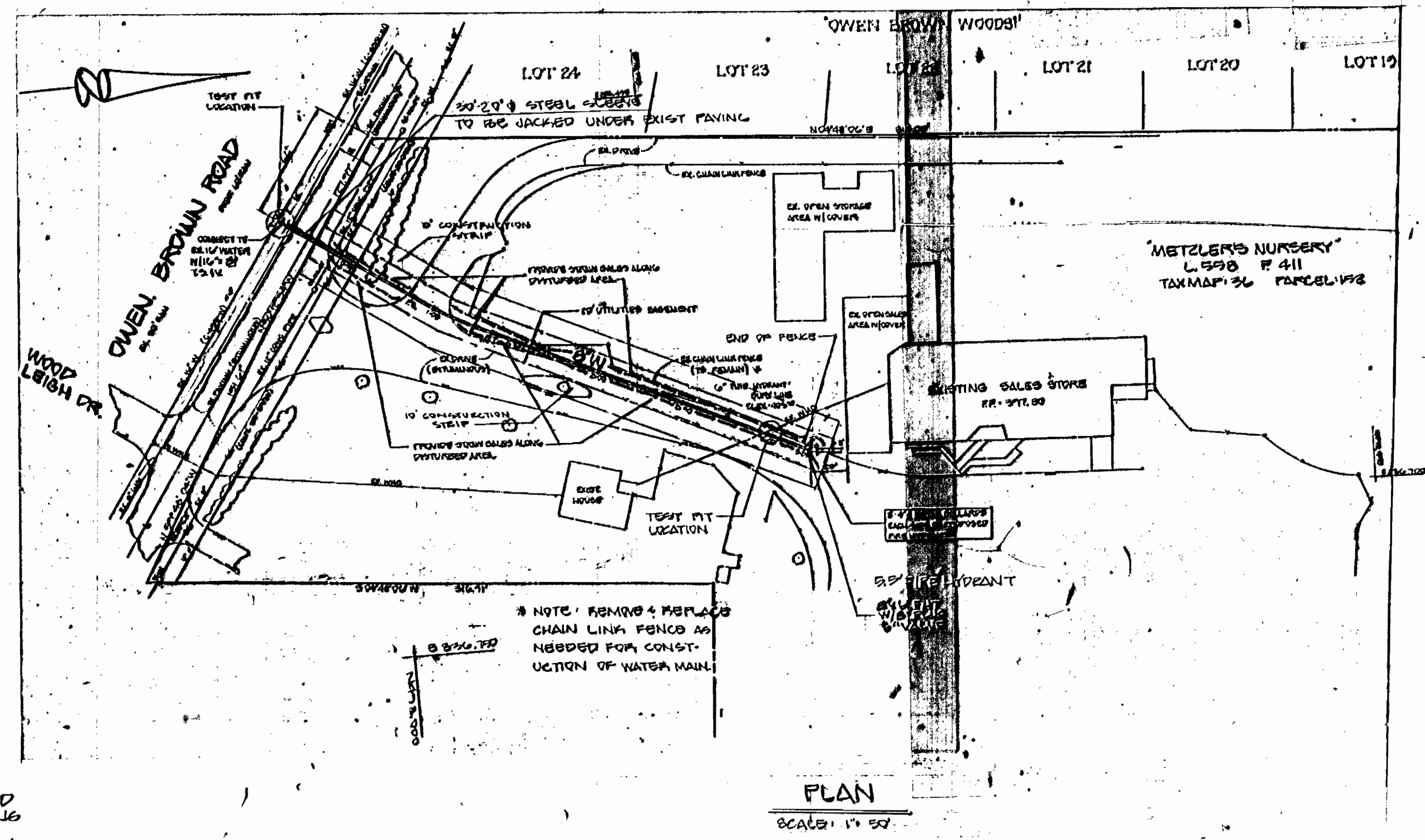
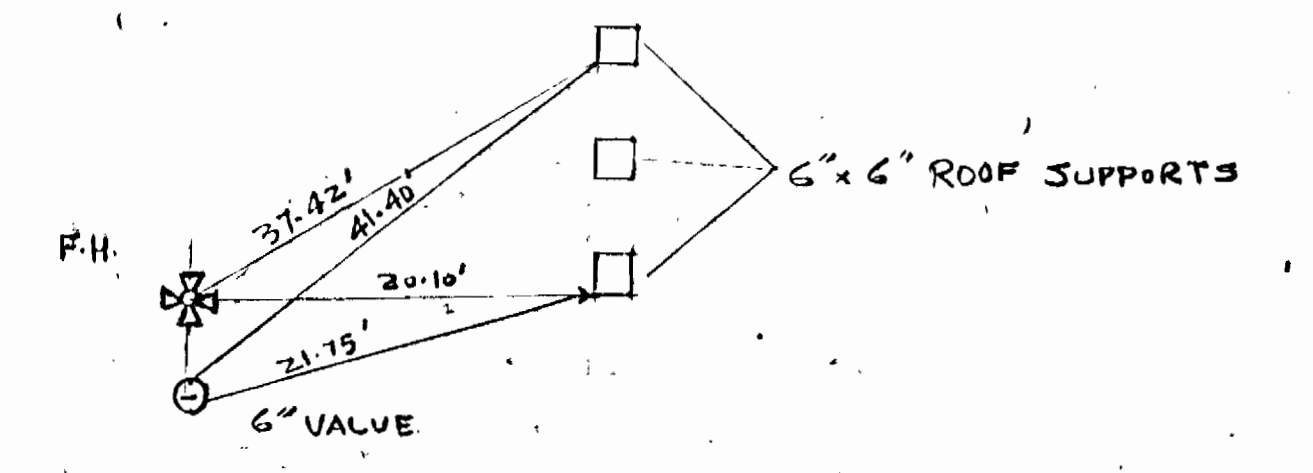
CONTRACT NO. 44-1524-D

SCALES
PLAN AS SHOWN
PROFILE: Horizontal AS, Vertical SHOWN

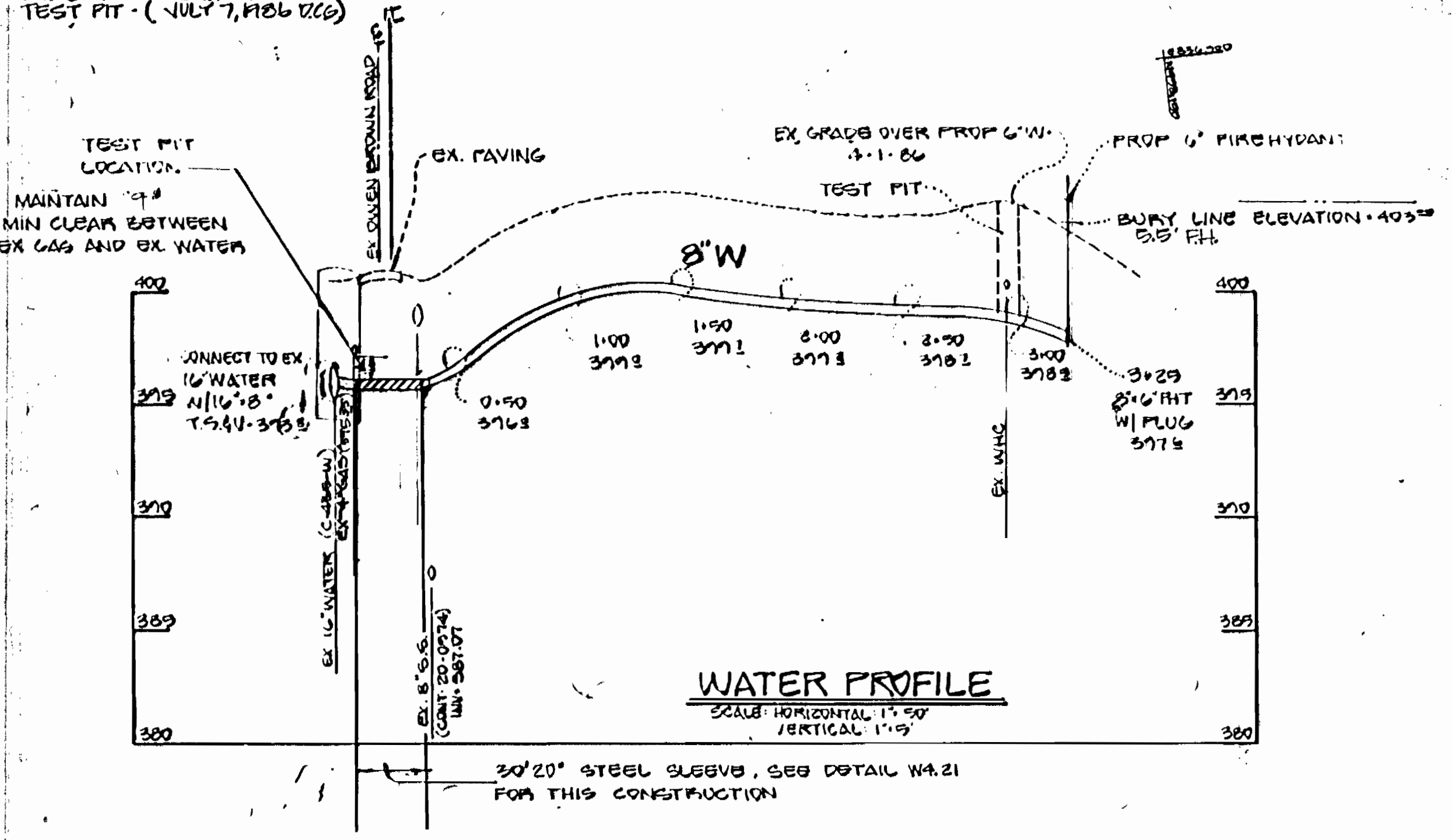
SEAL
Reg. No. 11447
DATE 10/16/82

AS BUILT 10/16/82

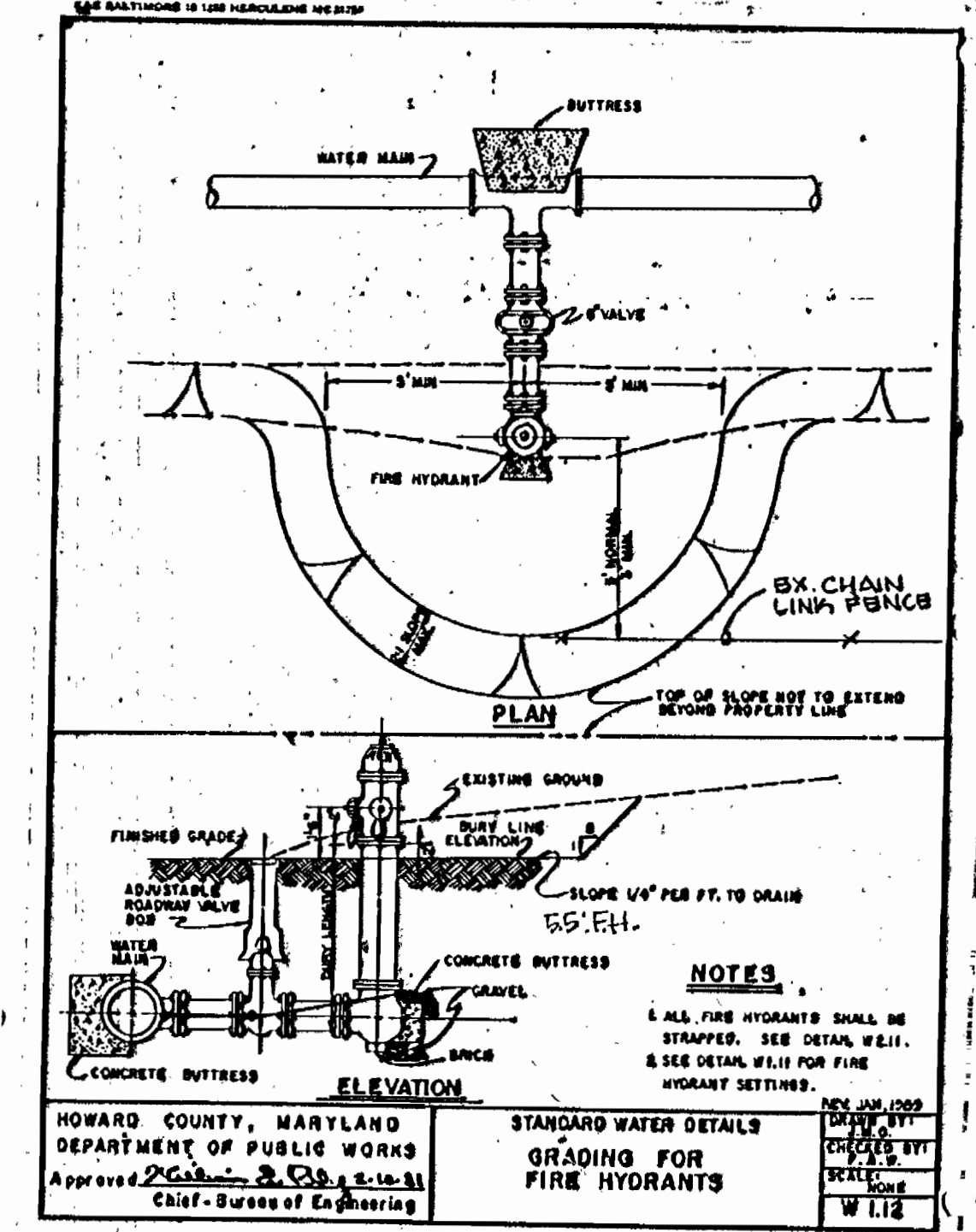
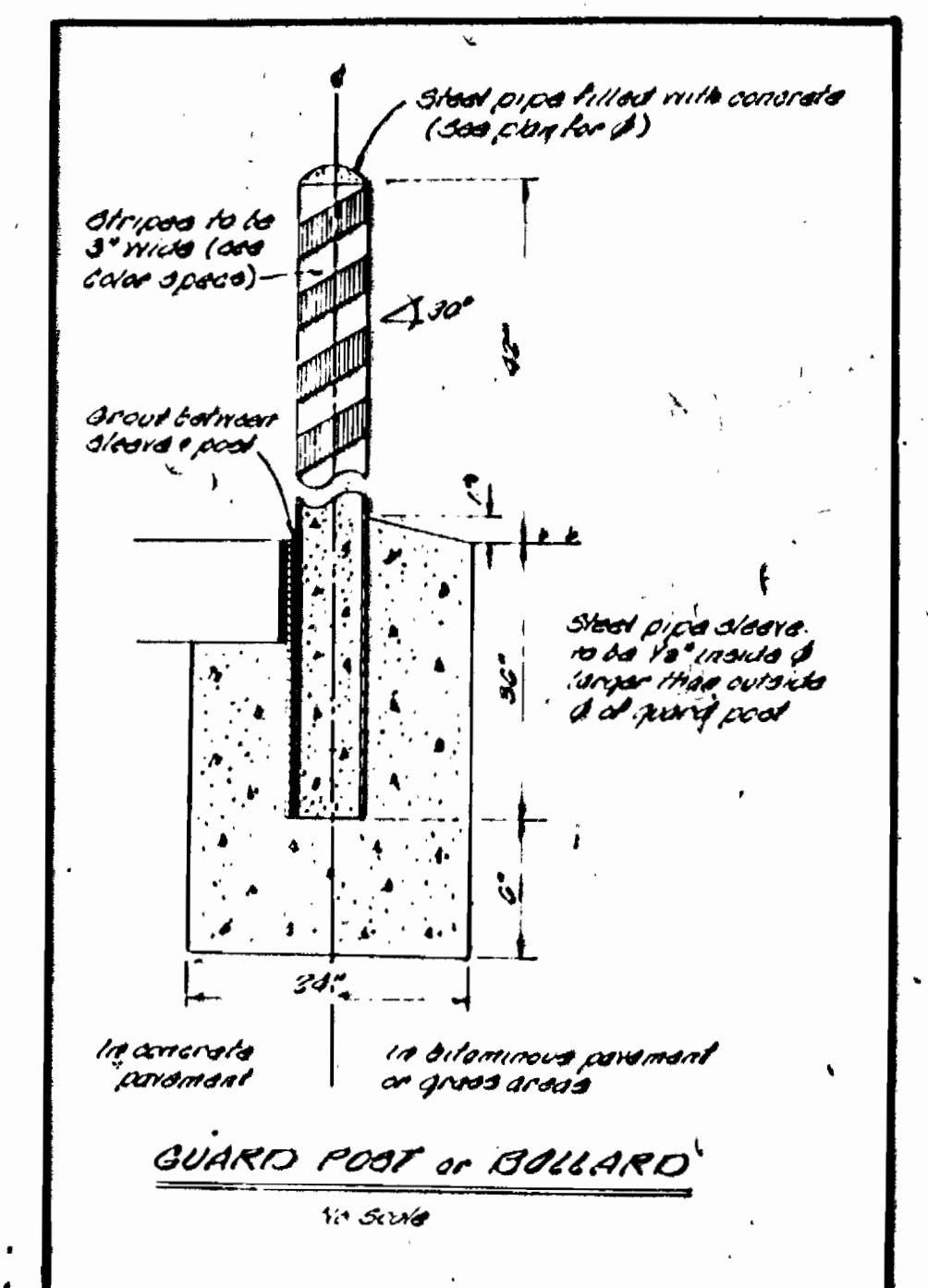
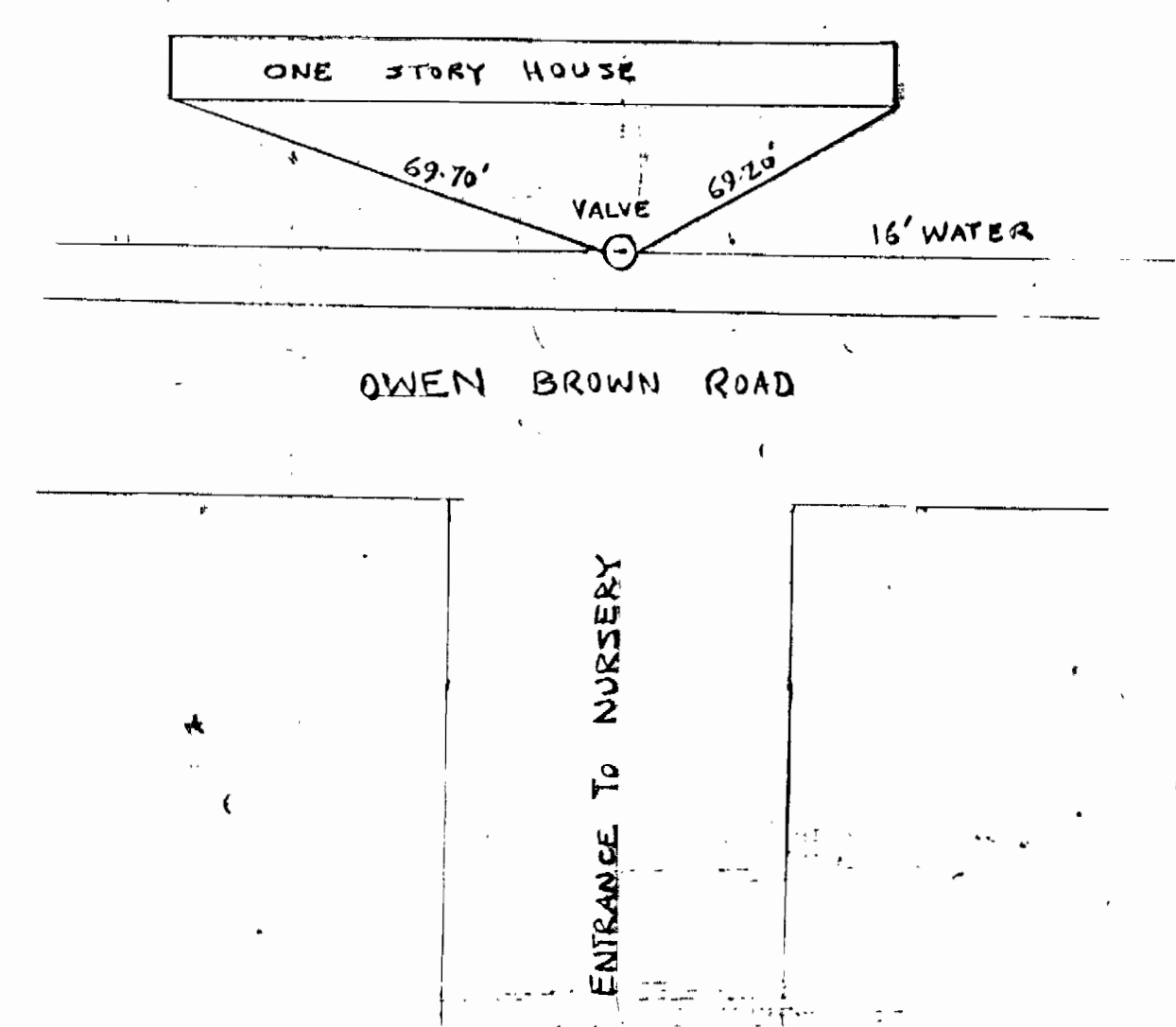
CHAIN TIES, FH
AND VALVE, STN. 3+25.



NOTE: LOCATION AND ELEVATION OF EXISTING 16" WATER AND 4" GAS HAVE BEEN VERIFIED BY TEST PIT - (JULY 7, 1986 REC)



CHAIN TIES TO
16" x 8" T-3 & VALVE.



PIPE SIZE	BLEED
8"	8"
10"	10"
12"	12"
14"	14"
16"	16"
18"	18"
20"	20"
24"	24"

Notes: ANNUAL SPACE AT EACH END OF CASING SHALL BE FILLED WITH 4" OF CONCRETE. STEEL BLEED CASING. ANNUAL SPACE AT EACH END OF CASING SHALL BE FILLED WITH 4" OF CONCRETE. STEEL BLEED CASING. ANNUAL SPACE AT EACH END OF CASING SHALL BE FILLED WITH 4" OF CONCRETE. STEEL BLEED CASING.

AS-BUILT

CONTRACT NO 44-1524-D

DEVELOPMENT-CONSULTANTS GROUP INC
11904 Georgia Avenue
Suite 102 Olney Md 20832
301 924 4570

DEPARTMENT OF PUBLIC WORKS
HOWARD COUNTY, MARYLAND
CHIEF BUREAU OF UTILITIES
DATE 8-7-84
CHIEF BUREAU OF PUBLIC WORKS
DATE 8-4-86
CHIEF BUREAU OF ENGINEERING
DATE 8-6-88
CHIEF LAND DEVELOPMENT DIV
DATE

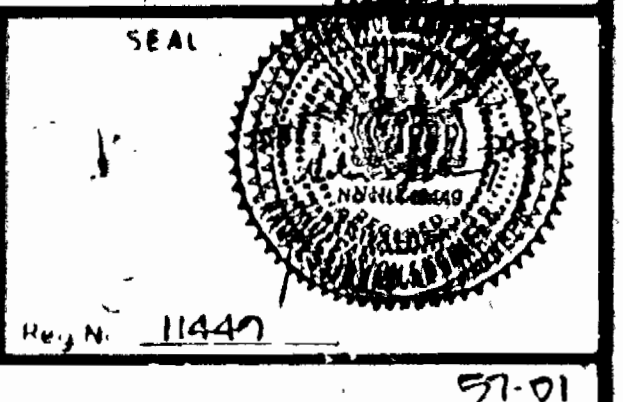
CONTRACT NO 44-1524-D

PLAN & PROFILE
WATER & SEWER
FACILITIES

METZLERS NURSERY
TAX MAP: 36 PARCEL: 152
CLARKSVILLE ELECTION DISTRICT
HOWARD COUNTY, MARYLAND.

DRAWING NO. 2 OF 2

SCALES
PLAN 1" = 30'
PROFILE Horizontal 1" = 30'
Vertical 1" = 2'



AS-BUILT

97-01