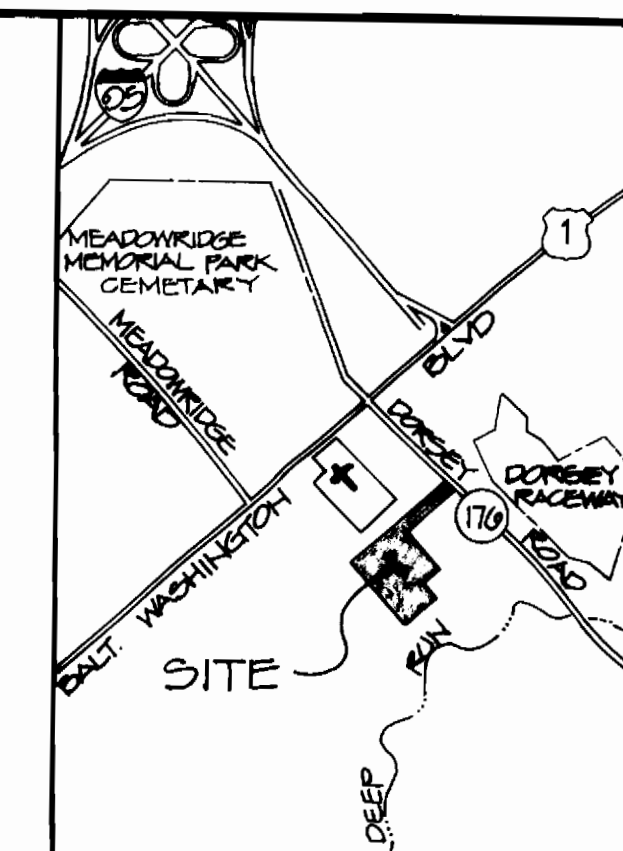


BENCHMARK: SURVEY COORDINATES REFERENCED FROM HOWARD CO. MONUMENT.

DONHEUR MEMORIAL PARK INC. CMP 874/470

GENERAL STEEL CONSTRUCTION, INC. CMP 879/93

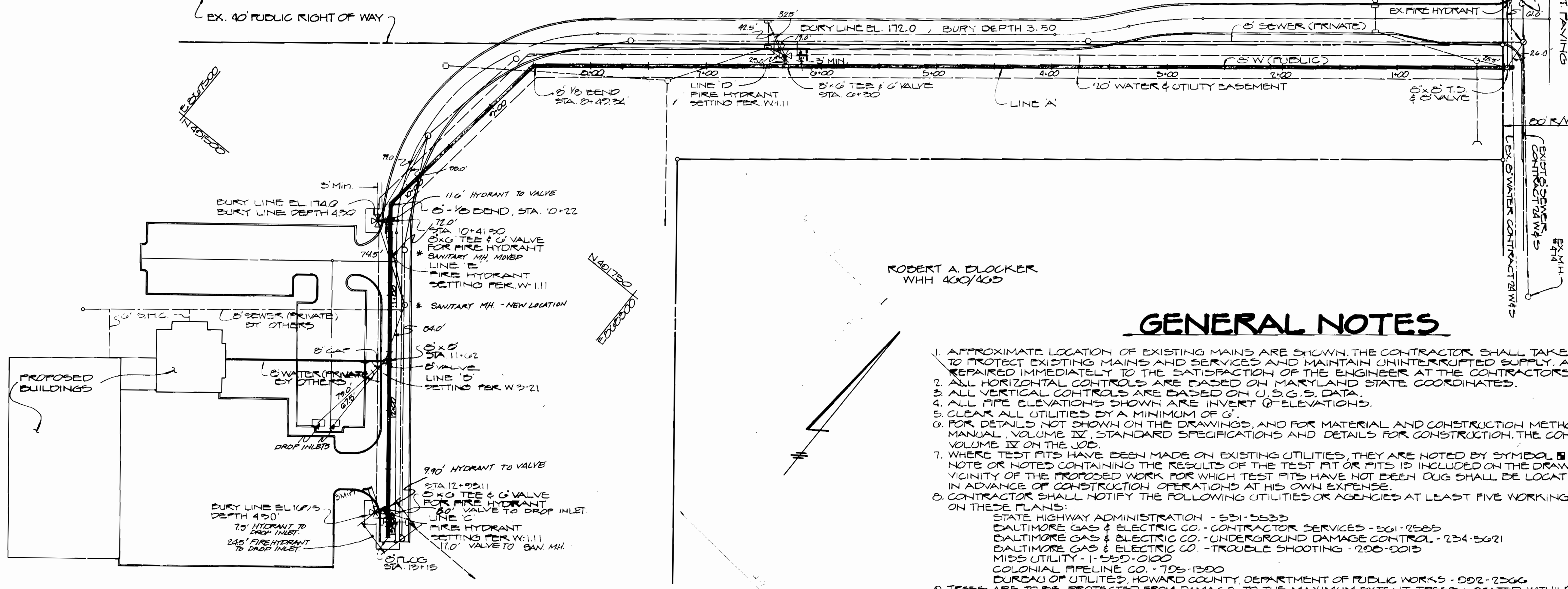
DORSEY ROAD



VICINITY MAP

SCALE: 1" = 200'

DRAINAGE AREA: PATAPSCO  
 NO. OF W.H.C. = 1  
 NO. OF S.H.C. = 1  
 W & S COUNTY USE  
 SEWER N°: 2210000  
 WATER N°: 601



PLAN  
 SCALE: 1" = 50'

ROBERT A. DLOCKER  
 WHH 460/463

GENERAL NOTES

- APPROXIMATE LOCATION OF EXISTING MAINS ARE SHOWN. THE CONTRACTOR SHALL TAKE ALL NECESSARY PRECAUTIONS TO PROTECT EXISTING MAINS AND SERVICES AND MAINTAIN UNINTERRUPTED SUPPLY. ANY DAMAGE INCURRED SHALL BE REPAIRED IMMEDIATELY TO THE SATISFACTION OF THE ENGINEER AT THE CONTRACTOR'S EXPENSE.
- ALL HORIZONTAL CONTROLS ARE BASED ON MARYLAND STATE COORDINATES.
- ALL VERTICAL CONTROLS ARE BASED ON U.S.G.S. DATA.
- ALL PIPE ELEVATIONS SHOWN ARE INVERT @ ELEVATIONS.
- CLEAR ALL UTILITIES BY A MINIMUM OF 6'.
- FOR DETAILS NOT SHOWN ON THE DRAWINGS, AND FOR MATERIAL AND CONSTRUCTION METHODS, USE HOWARD COUNTY DESIGN MANUAL VOLUME IX, STANDARD SPECIFICATIONS AND DETAILS FOR CONSTRUCTION. THE CONTRACTOR SHALL HAVE A COPY OF VOLUME IX ON THE JOB.
- WHERE TEST PITS HAVE BEEN MADE ON EXISTING UTILITIES, THEY ARE NOTED BY SYMBOL  $\square$  AT THE LOCATION OF TEST PIT. A NOTE OR NOTES CONTAINING THE RESULTS OF THE TEST PIT OR PITS IS INCLUDED ON THE DRAWINGS. EXISTING UTILITIES IN THE VICINITY OF THE PROPOSED WORK FOR WHICH TEST PITS HAVE NOT BEEN DUG SHALL BE LOCATED BY THE CONTRACTOR TWO WEEKS IN ADVANCE OF CONSTRUCTION OPERATIONS AT HIS OWN EXPENSE.
- CONTRACTOR SHALL NOTIFY THE FOLLOWING UTILITIES OR AGENCIES AT LEAST FIVE WORKING DAYS BEFORE STARTING WORK SHOWN ON THESE PLANS:
  - STATE HIGHWAY ADMINISTRATION - 531-5533
  - BALTIMORE GAS & ELECTRIC CO. - CONTRACTOR SERVICES - 561-2565
  - BALTIMORE GAS & ELECTRIC CO. - UNDERGROUND DAMAGE CONTROL - 734-5671
  - BALTIMORE GAS & ELECTRIC CO. - TROUBLE SHOOTING - 206-9013
  - MISS UTILITY - 1-550-0100
  - COLONIAL PIPELINE CO. - 795-1300
  - BUREAU OF UTILITIES, HOWARD COUNTY, DEPARTMENT OF PUBLIC WORKS - 992-2566
- TREES ARE TO BE PROTECTED FROM DAMAGE TO THE MAXIMUM EXTENT. TREES LOCATED WITHIN THE CONSTRUCTION STRIP ARE NOT TO BE REMOVED OR DAMAGED BY THE CONTRACTOR.
- CONTRACTOR SHALL REMOVE TREES, STUMPS AND ROOTS ALONG LINE OF EXCAVATION AS DIRECTED BY THE ENGINEER. PAYMENT FOR SUCH REMOVAL SHALL BE INCLUDED IN THE PRICE BID FOR EXCAVATION & BACKFILL.
- PLACE REGULATION 'MEN WORKING' AND WARNING SIGNS AS REQUIRED TO COMPLY WITH MARYLAND STATE HIGHWAY ADMINISTRATION MANUAL OF TRAFFIC CONTROL FOR HIGHWAY CONSTRUCTION AND MAINTENANCE OPERATION.
- ALL WATER MAINS TO BE D.I.F. CLASS 52 UNLESS OTHERWISE NOTED.
- TOP OF ALL WATER MAINS TO HAVE A MINIMUM OF 3 1/2' COVER UNLESS OTHERWISE NOTED.
- VALVES ADJACENT TO TEES SHALL BE STRAPPED TO TEES.
- BLOCK ALL FITTINGS WITH CONCRETE.
- FIRE HYDRANTS SHALL BE SET TO THE CURB LINE ELEVATIONS SHOWN ON THE DRAWINGS. ALL FIRE HYDRANTS SHALL BE STRAPPED AND BUTTRESSED WITH CONCRETE IN ACCORDANCE WITH STANDARD DETAILS. SOIL AROUND THE FIRE HYDRANT SHALL BE COMPACTED IN ACCORDANCE WITH SECTION 1003 AND 1008 OF THE STANDARD SPECIFICATIONS.
- FOR ALL COPPER WATER HOUSE CONNECTIONS, UTILIZE FLARED TYPED FITTINGS ONLY.
- THE CONTRACTOR SHALL NOT OPERATE ANY WATER MAIN VALVES ON THE EXISTING SYSTEM.
- ALL WATER HOUSE CONNECTIONS SHALL BE FOR INSIDE METER SETTING, UNLESS OTHERWISE NOTED ON THE PLANS.
- WATER MAINS AND WATER HOUSE CONNECTION LINES MUST BE PLACED SO AS TO HAVE AT LEAST ONE (1) FOOT SEPARATION FROM THE SEWER MAIN OR SEWER HOUSE CONNECTION AS THEY PASS ABOVE IT.
- ALL SEWER MAINS SHALL BE C.S.F.P., R.C.S.P., V.C.F.P., A.C.P. CLASS 2400 OR P.V.C. UNLESS OTHERWISE NOTED.
- THE CONTRACTOR SHALL PROVIDE A JOINT IN ALL SEWER MAINS WITHIN 2'-0" OF EXTERIOR MANHOLE WALL.
- ALL MANHOLES SHALL BE 4'-0" INSIDE DIAMETER UNLESS OTHERWISE NOTED.
- MANHOLES LOCATED WITHIN PROPOSED ROADWAY SHALL HAVE STANDARD HEAVY TRAFFIC MANHOLE FRAME AND COVER, STANDARD DETAIL 05.51.
- SERVICE CLAMPS ARE TO HAVE STAINLESS STEEL STRAPS.

NOTE: ALL MEASUREMENTS TAKEN FROM CENTER OF DONHEUR

SEDIMENT CONTROL MEASURES FROM THIS CONTRACT WILL BE IMPLEMENTED IN ACCORDANCE WITH ARTICLE 15 OF THE SPECIFICATIONS AND AS SHOWN ON S.D.P. - 86-121

HOWARD SOIL CONSERVATION DISTRICT:  
 REVIEWED FOR HOWARD SOIL CONSERVATION DISTRICT AND MEETS TECHNICAL REQUIREMENTS.  
*[Signature]* 7-23-86  
 U.S. SOIL CONSERVATION SERVICE DATE

THIS PLAN IS APPROVED FOR SOIL EROSION AND SEDIMENT CONTROL BY THE HOWARD SOIL CONSERVATION DISTRICT  
*[Signature]* 7/23/86  
 HOWARD SOIL CONSERVATION DISTRICT DATE

ITEM	QUANTITIES		MATERIAL SUPPLIER
	ESTIMATED	AS BUILT	
8" WATER	1515 L.F.	1310 L.F.	US CENT D.I.P.
8" VALVE	1	2	US PIPE & FOUNDRY
6" WATER	25 L.F.	20 L.F.	US CENT D.I.P.
6" VALVE	3	3	US PIPE & FOUNDRY
7" W.H.C.	10 L.F.	-	-
FIRE HYDRANT	3	3	US PIPE & FOUNDRY
SEWER M.H.	1	1	TERRE PRE-CAST W.H.
8" SEWER MAIN	16 L.F.	16 L.F.	J.M. PIPE
	3	3	US PIPE & FOUNDRY
	1	1	US PIPE & FOUNDRY

DEPARTMENT OF PUBLIC WORKS  
 HOWARD COUNTY, MARYLAND

*[Signature]* 7-24-86  
 DIRECTOR OF PUBLIC WORKS DATE

*[Signature]* 7-25-86  
 CHIEF BUREAU OF UTILITIES DATE

*[Signature]* 7-25-86  
 CHIEF LAND DEVELOPMENT DIVISION DATE

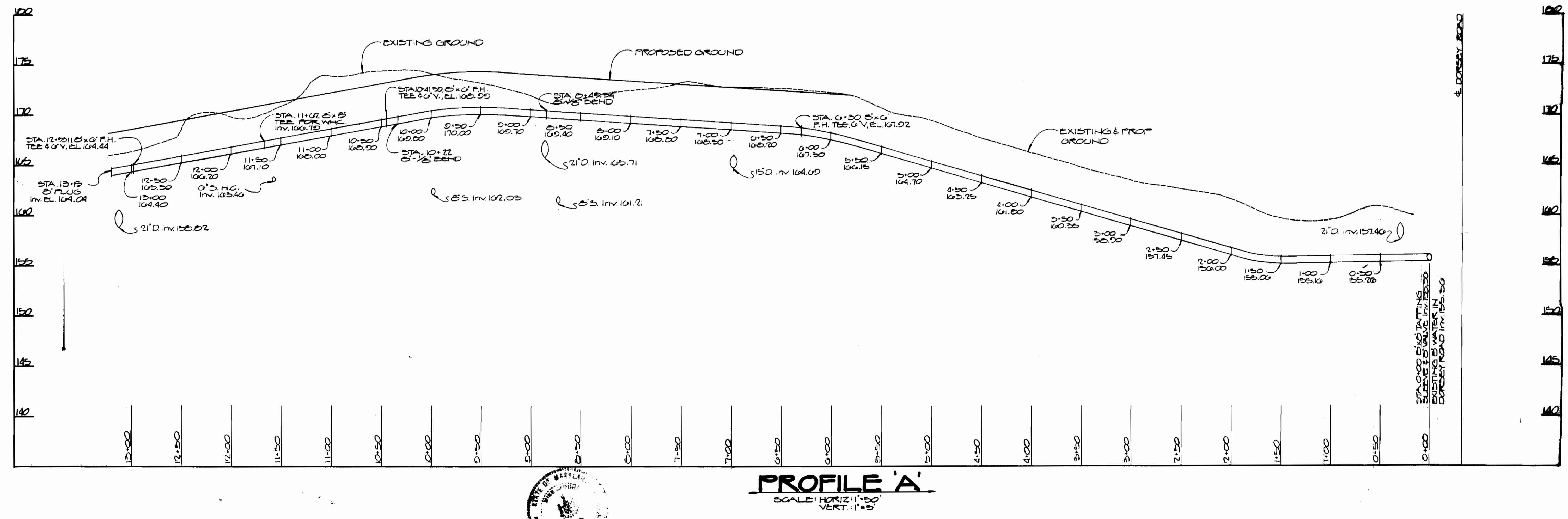
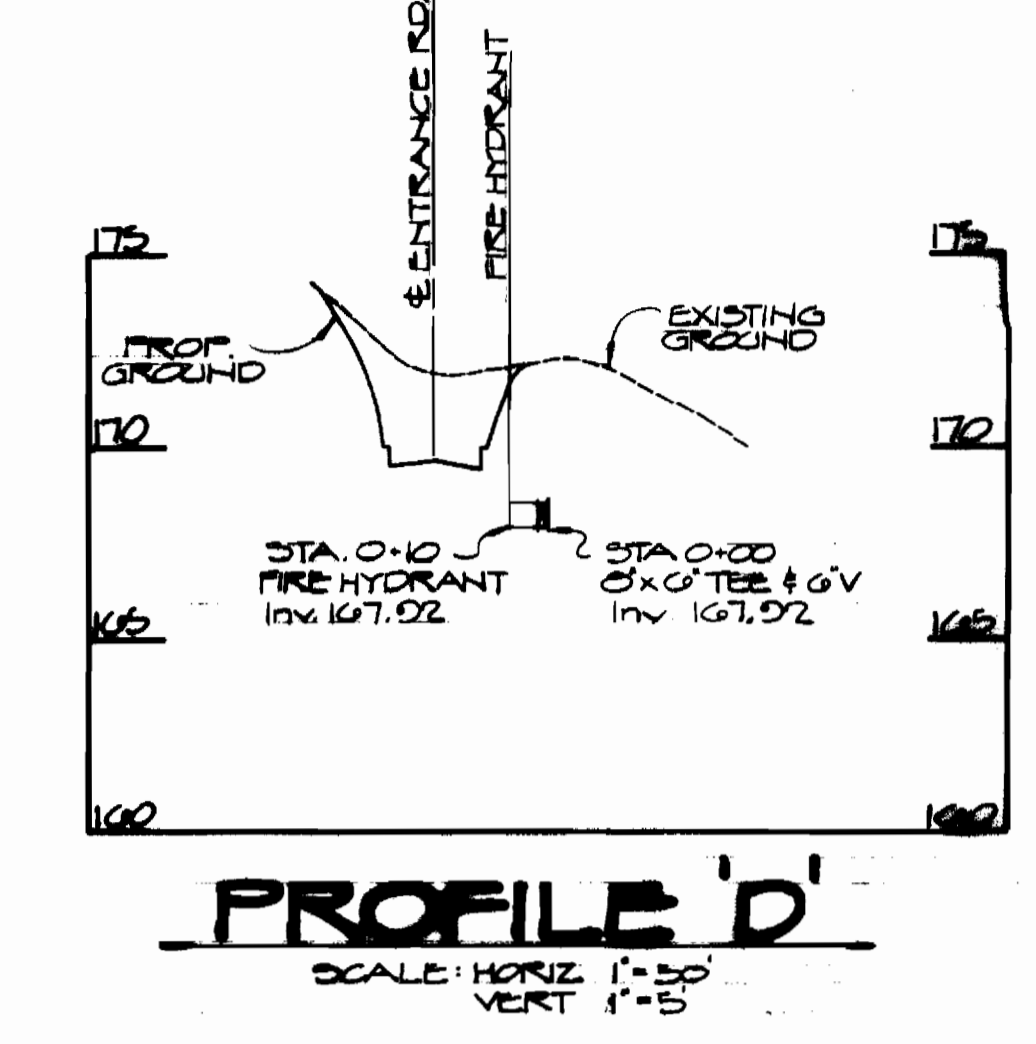
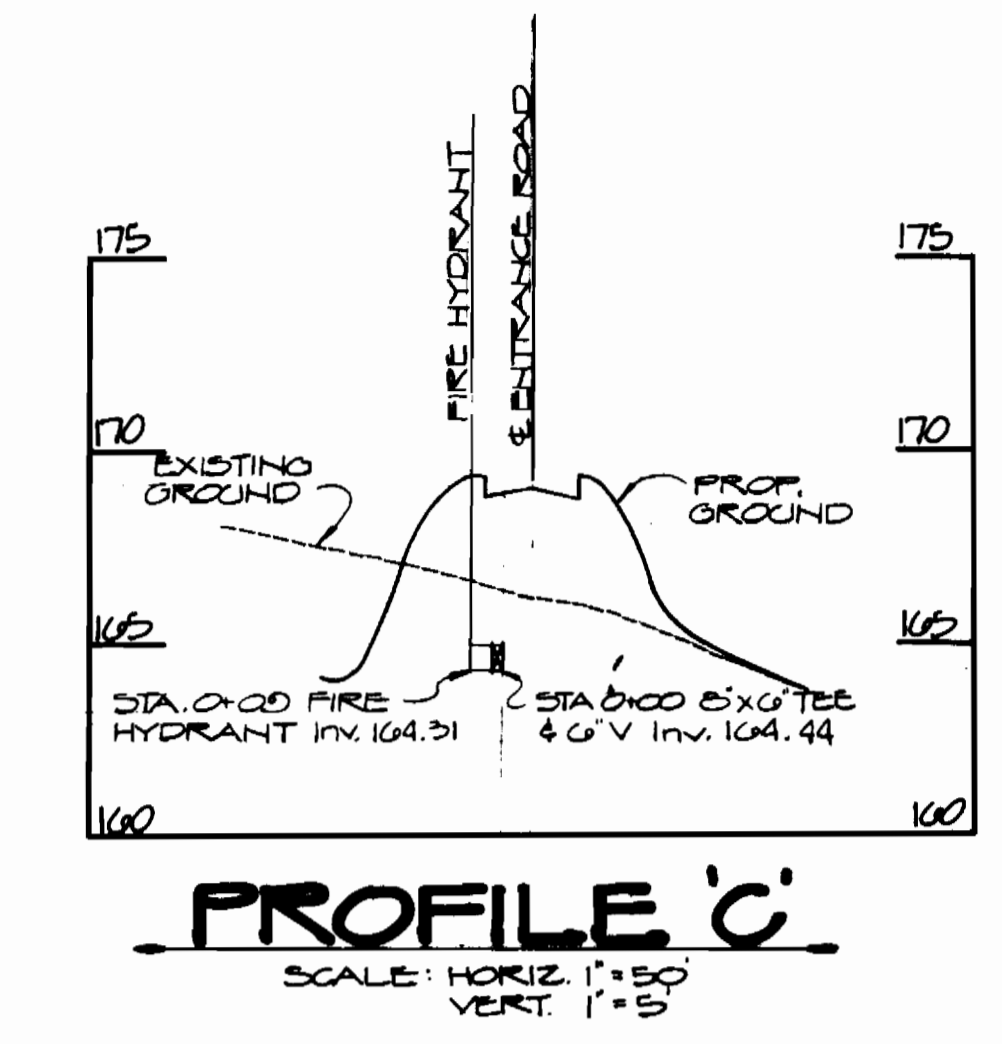
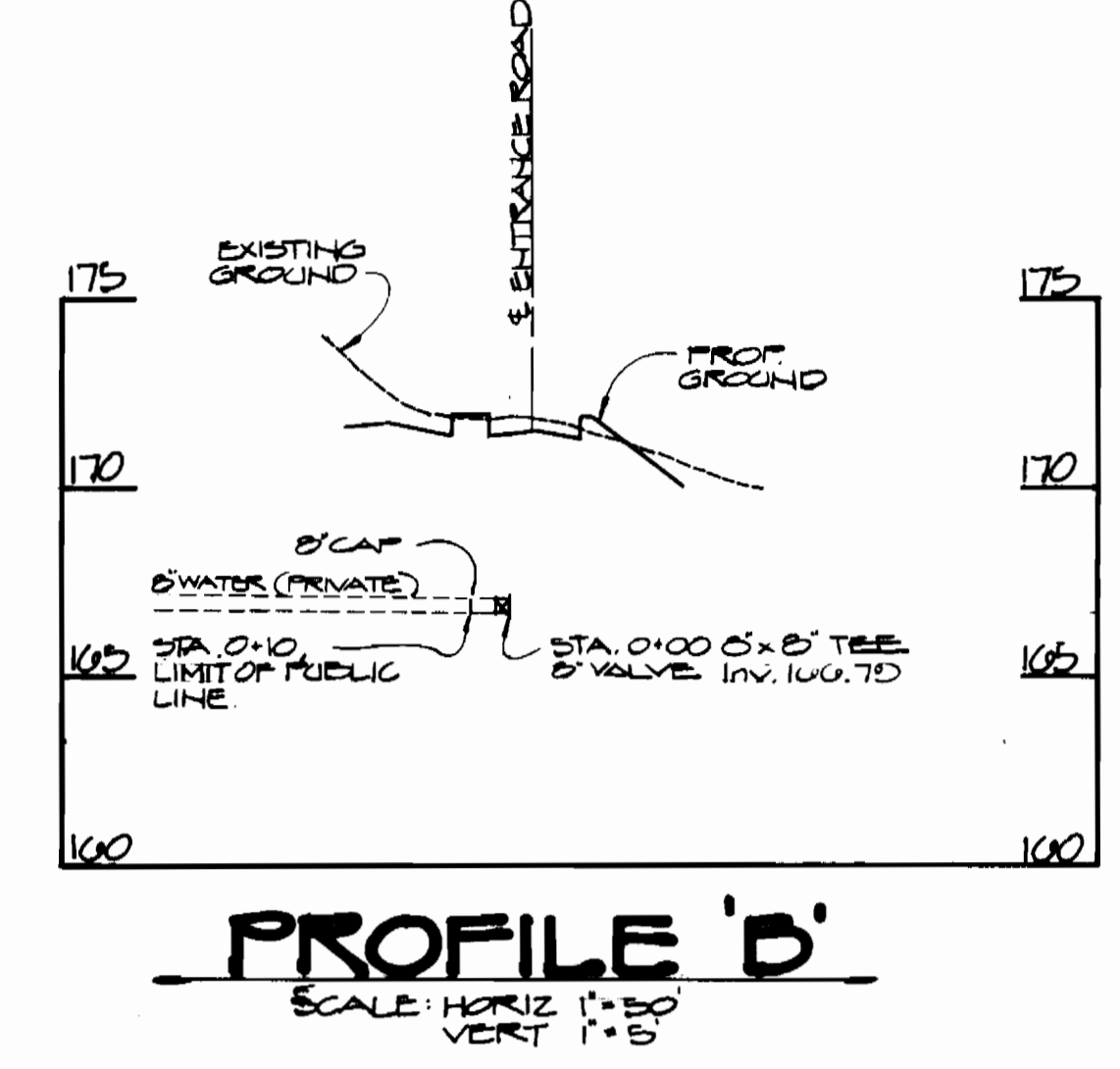
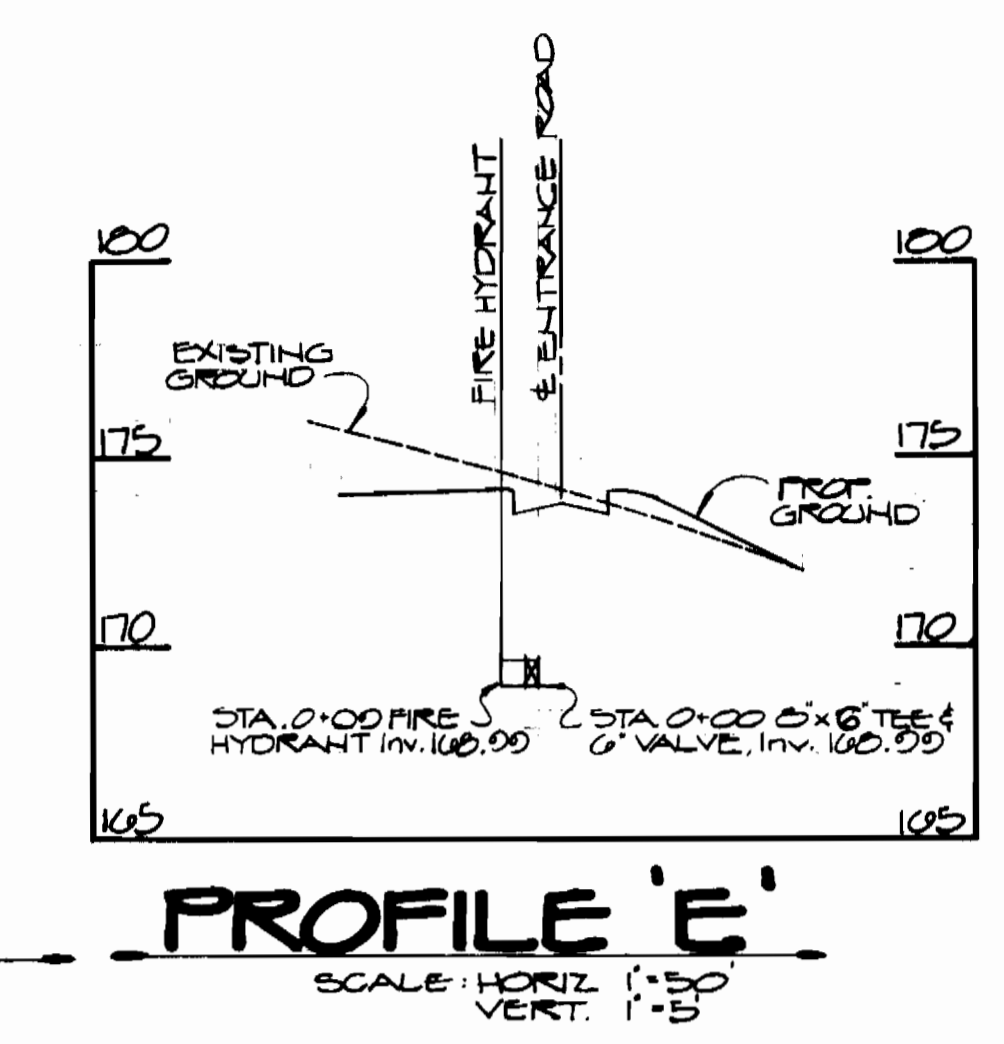
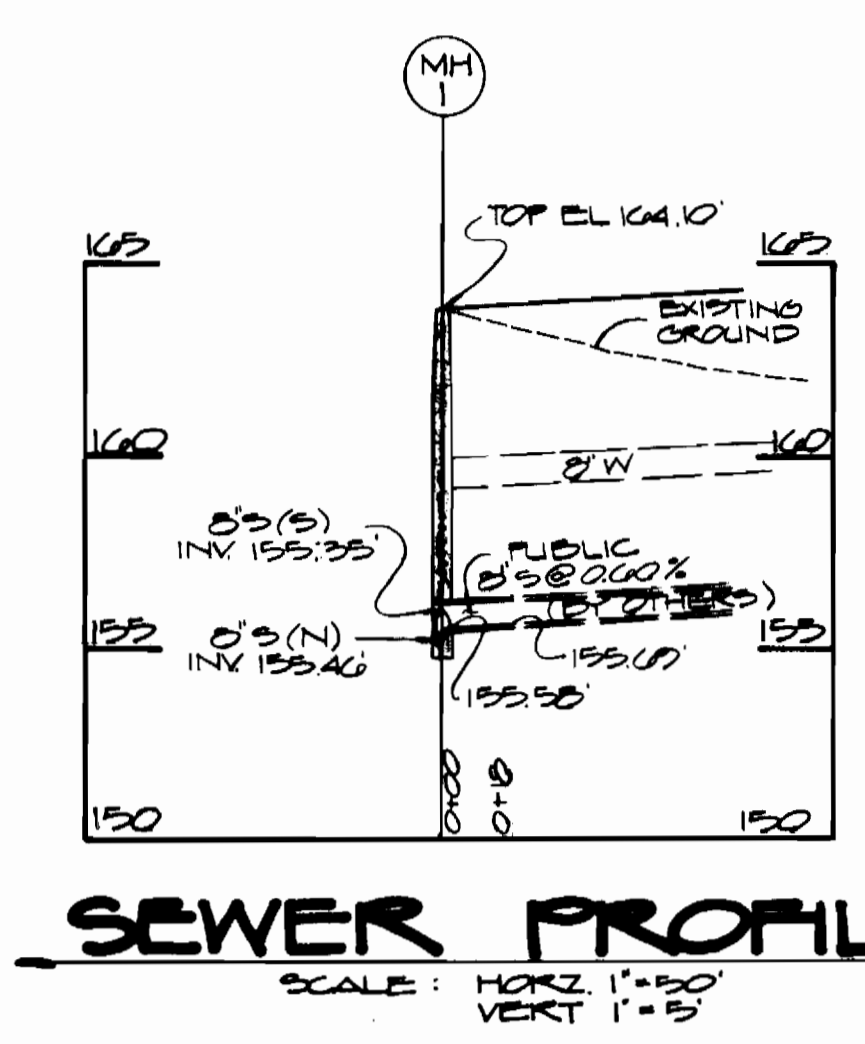
D.S. THALER & ASSOC. INC.  
 11 WARREN ROAD  
 BALTO. MD 21208  
 (301) 484-4100

DES. M.L.T.	ELC	1	REVISED LINE 'D' FROM '2' TO 'B' WATER	12/2/86
	CN	1	AS BUILTS	4/27/88
DRN. M.L.T.				
CHK. T.H.M.				
DATE: 6-9-86	BY	NO.	REVISION	DATE

PLAN OF WATER  
 AND SEWER MAIN

DORSEY INDUSTRIES  
 1st ELECTION DISTRICT  
 TAX MAP 37 & 43  
 CONTRACT NO. 14-1521-D

SCALE AS SHOWN  
 SHEET 1 OF 2



DEPARTMENT OF PUBLIC WORKS  
HOWARD COUNTY, MARYLAND

*Henry F. Nummy* 7-28-86  
DIRECTOR OF PUBLIC WORKS DATE

*William E. Ray* 7-28-86  
CHIEF BUREAU OF ENGINEERING DATE

*William E. Ray* 7-28-86  
CHIEF LAND DEVELOPMENT DIVISION DATE

D.S. THALER & ASSOC. INC.  
11 WARREN ROAD  
BALTO. MD 21208  
(301) 484-4100

DES: M.L.T.	ELC. 1	REVISED PROFILE 'D' FROM 2" TO 6" WATER	10/23/80
DRN: M.L.T.			
CHK: T.H.M.			
DATE: 6-2-80	BY: NO.	REVISION	DATE

PROFILE OF WATER MAIN &  
SEWER MAIN

DORSEY INDUSTRIES  
1st ELECTION DISTRICT  
TAX MAP 51 & 25  
CONTRACT NO. 14-1521-D

SCALE AS SHOWN  
SHEET 2 OF 2