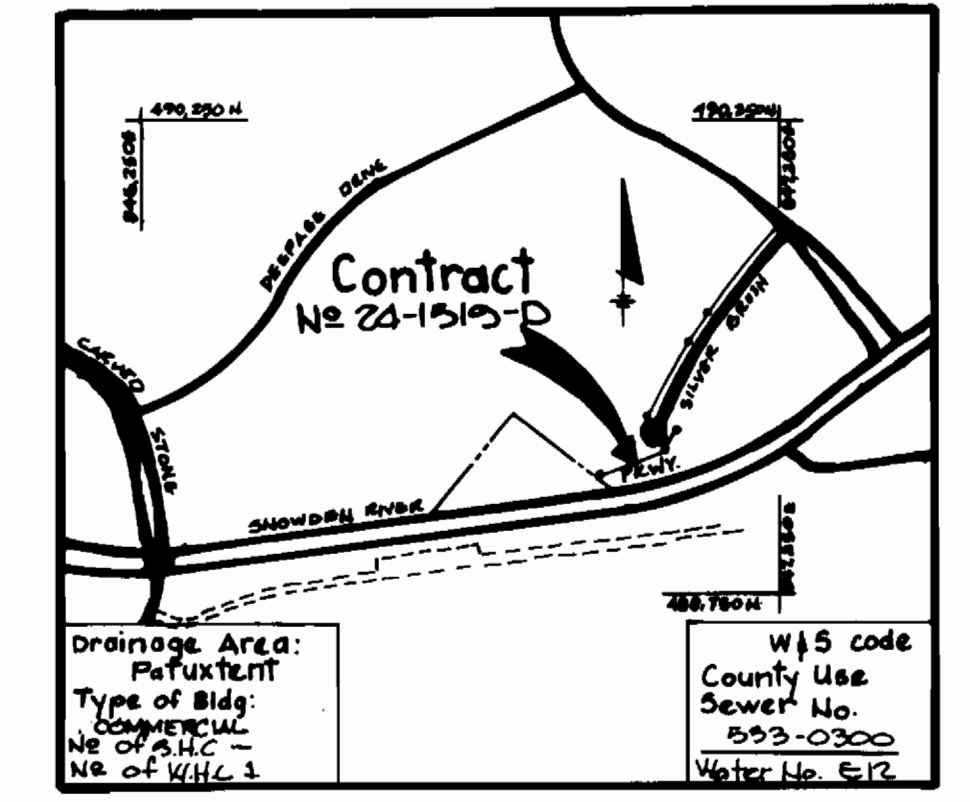


**BENCH MARK**  
 HO. CO. BM NR 2341002 ELEV. 359.66  
 N 489530.77 E 844907.75  
 Conc monument along the south side of  
 Carved Stone Road near BG#E  
 Tower No 27 & 27.E



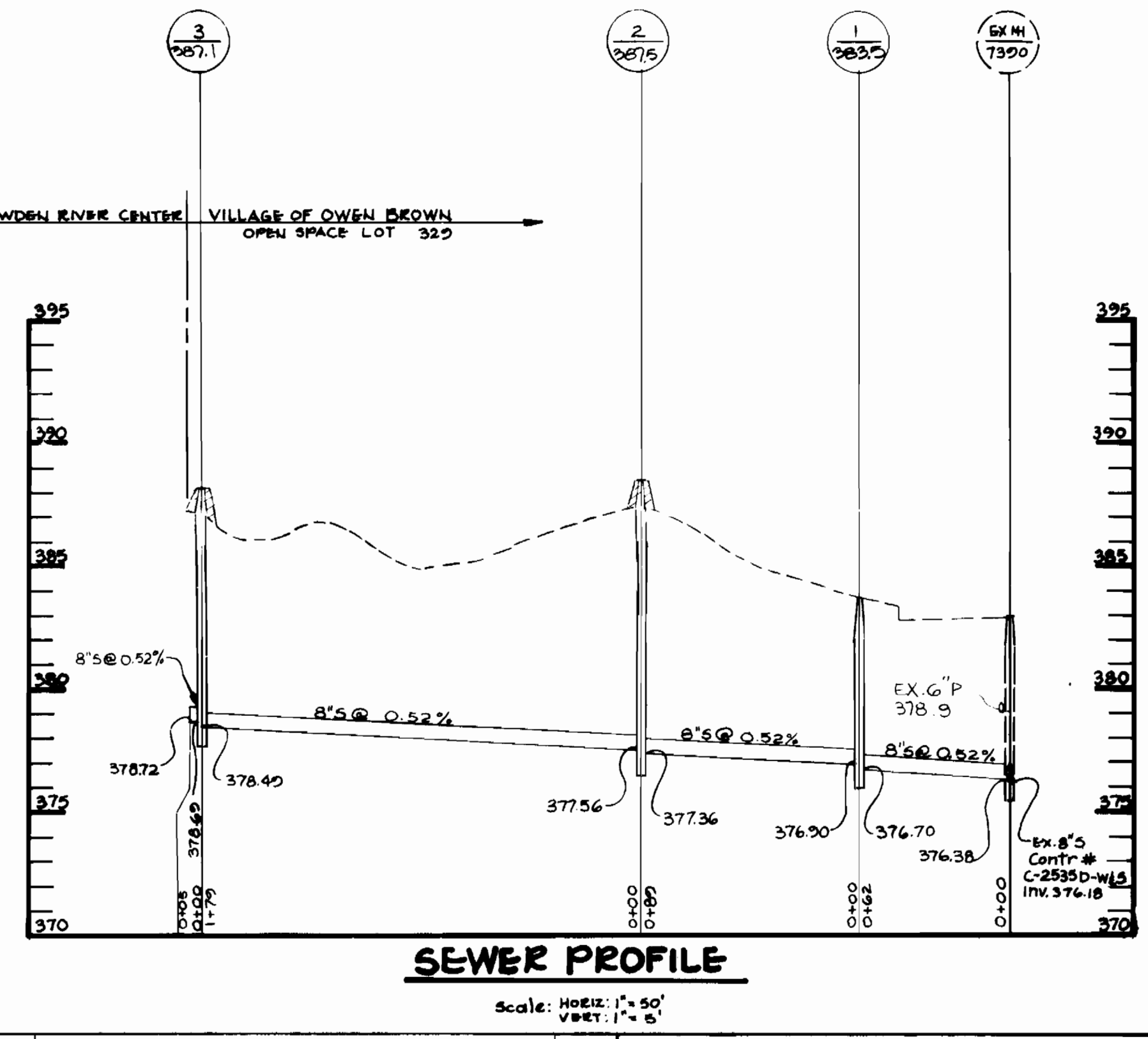
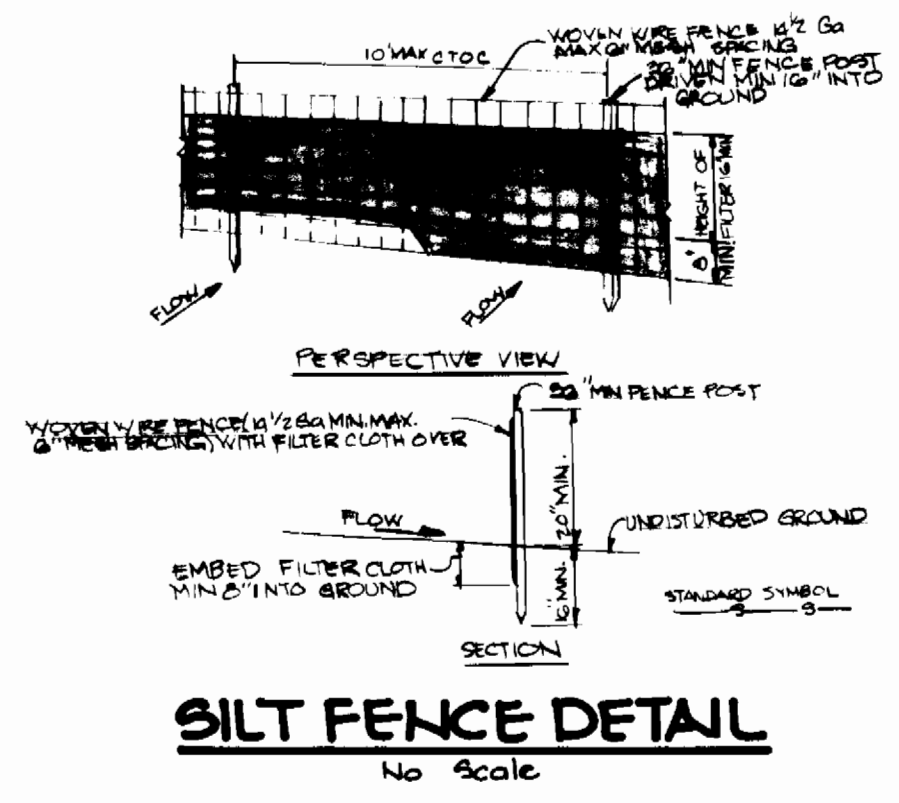
**GENERAL NOTES**

- 1) Approximate location of existing mains are shown. The contractor shall take all necessary precautions to protect existing mains and services and maintain uninterrupted supply. Any damage incurred shall be repaired immediately to the satisfaction of the Engineer at the Contractor's expense.
- 2) All horizontal controls are based on Maryland State Coordinates.
- 3) All vertical controls are based on U.S.G.S. data.
- 4) All pipe elevations shown are invert elevations.
- 5) Clear all poles by a minimum of 6'. Clear all poles by 2'-0" minimum or Tunnel as required. The owner has contacted the utility companies and has made arrangements for bracing of poles as shown on the drawings. In the event the contractor's work requires the bracing of additional poles, any cost incurred by the owner for the bracing of additional poles or damages shall be deducted from money owed the contractor. The contractor shall coordinate with the utility companies to schedule the bracing of the poles.
- 6) For details not shown on the drawings, and for materials and construction methods, use Howard County Design Manual, Volume IV, Standard Specifications and Details for Construction. The contractor shall have a copy of Volume IV on the job.
- 7) Where test pits have been made on existing utilities, they are noted by the symbol  $\square$  at the location of the test pit. A note or notes containing the results of the test pit or pits is included on the drawings. Existing utilities in the vicinity of the proposed work for which test pits have not been dug shall be located by the contractor two weeks in advance of construction operations at his own expense.
- 8) Contractor shall notify the following utilities or agencies at least five working days before starting work shown on these plans:  
 State Highway Administration - 531-5533  
 Baltimore Gas & Electric Co. - Contractor Services - 561-2585  
 Baltimore Gas & Electric Co. - Under Ground Damage Control - 234-5621  
 Baltimore Gas & Electric Co. - Trouble Shooting - 298-9013  
 Miss Utility - 1-800-257-7777  
 Colonial Pipeline Co. - 795-1390  
 Bureau of Utilities, Howard County Department of Public Works - 992-2366
- 9) Trees are to be protected from damage to maximum extent. Trees located within the construction strip are not to be removed or damaged by the contractor.
- 10) Contractor shall remove trees, stumps and roots along line of excavation as directed by the Engineer. Payment for such removal shall be included in the unit price bid for excavation and backfill.
- 11) Place regulation "Man Working" and warning signs as required to comply with Maryland State Highway Administration Manual of Traffic Control for Highway Construction and Maintenance Operations.
- 12) All sewer mains shall be C.S.P.X., V.C.P.X., R.C.V. or A.C.P. Class 2400 unless otherwise noted.
- 13) The contractor shall provide a joint in all sewer mains within 2'-0" of exterior manhole wall.
- 14) All manholes shall be 4'-0" inside diameter, unless otherwise noted.
- 15) Manholes shown with 12" and 16" walls are brick manholes only.
- 16) Manholes designated W.T. in plan and profile shall have watertight frame and covers, Standard Detail G.5.52 Volume IV. Where watertight manhole frame and cover is used, set top of frame 1'-6" above finished grade.
- 17) House(s) with the symbol "C.N.S." indicates the cellar cannot be served.
- 18) All water house connections shall have a minimum vertical clearance of 12" above all sanitary sewer crossings.
- 19) All sanitary sewer house connections shall have a minimum vertical clearance of 12" below all water main crossings.
- 20) Profile stations shall be adjusted as necessary to conform to Plan dimensions.
- 21) No pipe shall be laid until lines of excavation have been brought to subgrade.

NOTES: 1. ALL MANHOLES TO BE CONSTRUCTED IN ACCORDANCE WITH STANDARD DETAIL G.5.41 FROM SPECIAL PARTS OF MANUAL.

846.250 E  
488.750 N

488.750 N  
846.250 E



Item	Quantities			Material Supplier
	Estimated	As Built		
8" sewer	335 LF	330.37 LF		ATLANTIC CONCRETE PRODUCTS
Manholes	30 V.F.	30 V.F.		ATLANTIC CONCRETE PRODUCTS
6" WATER	5 L.F.	5 L.F.		ATLANTIC CONCRETE PRODUCTS
F.W.	1	1		ATLANTIC CONCRETE PRODUCTS
12"x6" T.S.#V.	2	2		ATLANTIC CONCRETE PRODUCTS

Sediment control measures for this contract will be implemented in accordance with article 15 of the Specifications and as shown on this plan.

Howard Soil Conservation District:  
 Reviewed for Howard Soil Conservation District and meets technical requirements.  
 U.S. Soil Conservation Service  
 Date: 8-19-86

This plan is approved for soil erosion and sediment control by the Howard Soil Conservation District  
 Date: 8-17-86

DEPARTMENT OF PUBLIC WORKS  
 HOWARD COUNTY, MARYLAND

THE RIEMER GROUP, INC.  
 3105 NORTH RIDGE ROAD  
 ELLICOTT CITY, MARYLAND 21043

DES: DAM  
 DRN: K.J.B.  
 CHK:  
 DATE:

BY: NO. REVISION DATE

600' SCALE MAP NO. 42 BLOCK NO.

VILLAGE OF OWEN BROWN  
 ELECTION DISTRICT NO. 6  
 HOWARD COUNTY, MARYLAND  
 CONTRACT NO. 24-1519-D

SCALE AS SHOWN  
 SHEET 1 OF 1

