

Note:  
These C.E.'s are minimum servable by the sewer mains shown hereon. Note that these elevations are less than the required 2'-0" minimum above the 100 year floodplain elevation.

HOWARD SOIL CONSERVATION DISTRICT:  
REVIEWED FOR HOWARD SOIL CONSERVATION DISTRICT AND MEETS TECHNICAL REQUIREMENTS.

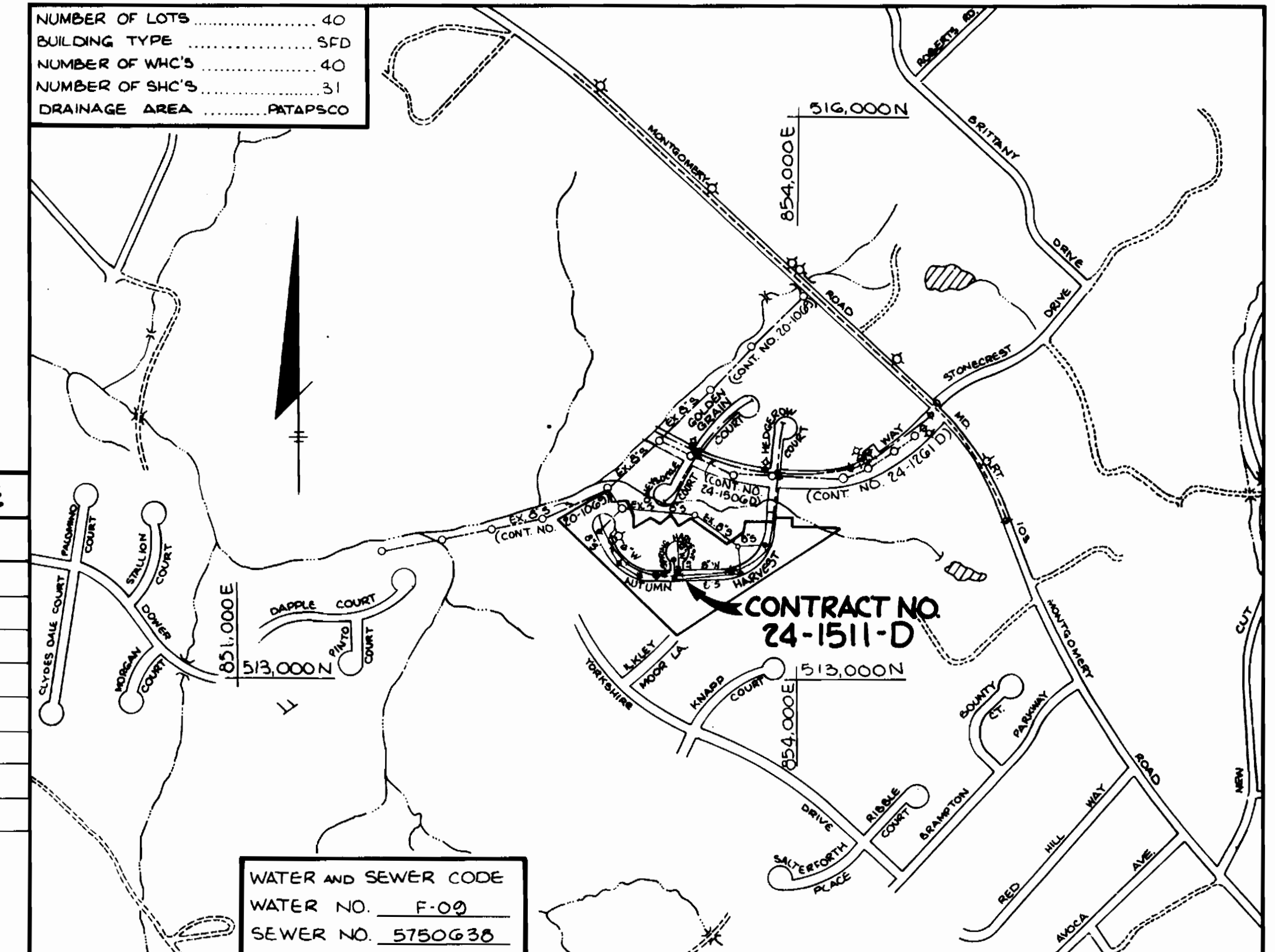
*John M. ...* 7-10-86  
U.S. SOIL CONSERVATION SERVICE DATE

THIS PLAN IS APPROVED FOR SOIL EROSION AND SEDIMENT CONTROL BY THE HOWARD SOIL CONSERVATION DISTRICT.

*Stephen L. Fisher* 7/10/86  
HOWARD SOIL CONSERVATION DISTRICT DATE

SEDIMENT CONTROL MEASURES FOR THIS CONTRACT WILL BE IMPLEMENTED IN ACCORDANCE WITH ARTICLE 15 OF THE HOWARD COUNTY STANDARD SPECIFICATIONS AND AS PER ROAD CONSTRUCTION PLANS F-56-140

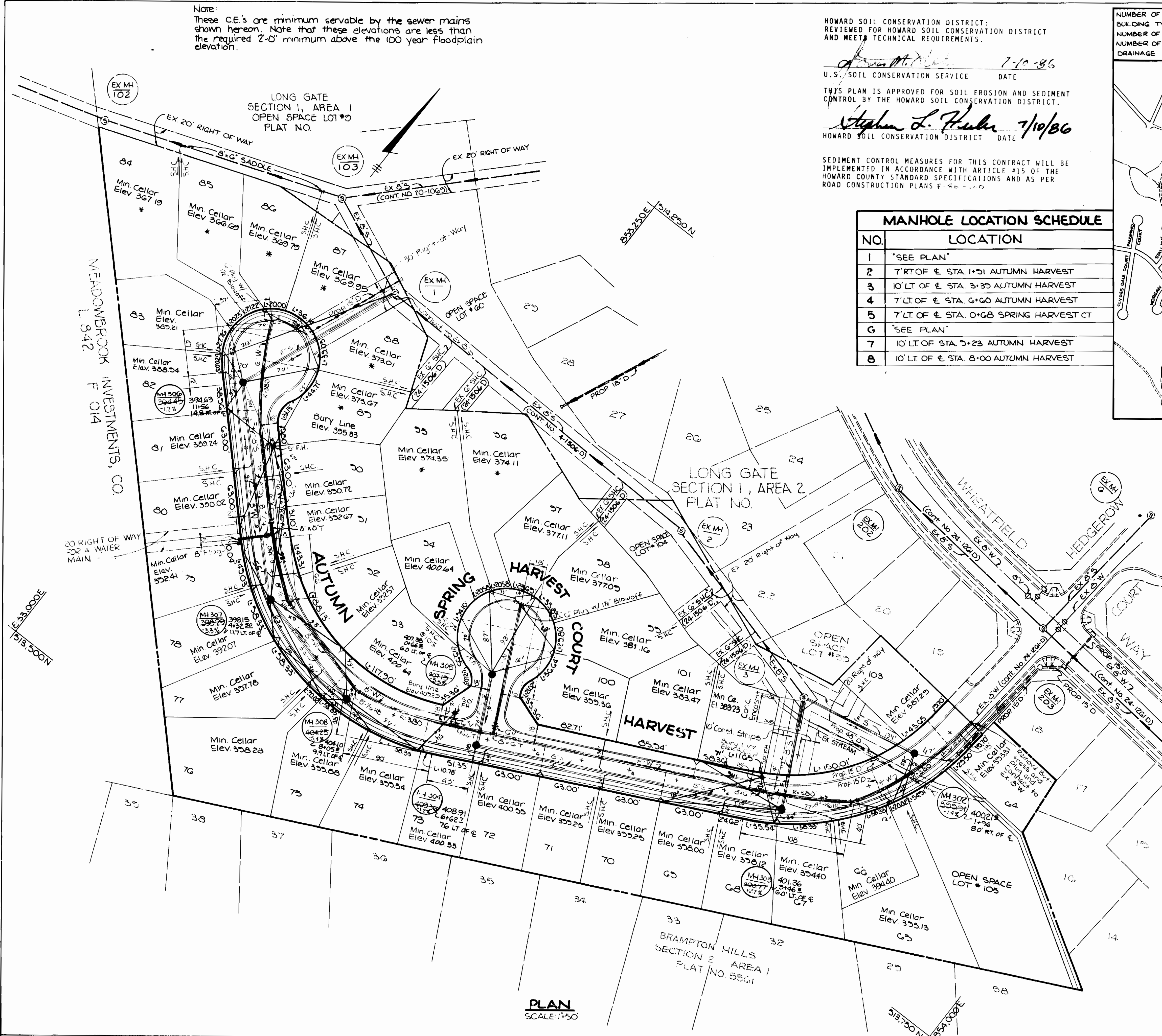
NUMBER OF LOTS	40
BUILDING TYPE	SFD
NUMBER OF WHC'S	40
NUMBER OF SHC'S	31
DRAINAGE AREA	PATAPSCO



WATER AND SEWER CODE  
WATER NO. F-09  
SEWER NO. 5750630

VICINITY MAP  
SCALE 1" = 600'

NO.	LOCATION
1	"SEE PLAN"
2	7' RT OF E. STA. 1+51 AUTUMN HARVEST
3	10' LT OF E. STA. 3+39 AUTUMN HARVEST
4	7' LT OF E. STA. 6+60 AUTUMN HARVEST
5	7' LT OF E. STA. 0+68 SPRING HARVEST CT
6	"SEE PLAN"
7	10' LT OF STA. 5+23 AUTUMN HARVEST
8	10' LT. OF E. STA. 8+00 AUTUMN HARVEST



PLAN  
SCALE 1" = 50'

- GENERAL NOTES
- APPROXIMATE LOCATION OF EXISTING MAINS ARE SHOWN. THE CONTRACTOR SHALL TAKE ALL NECESSARY PRECAUTIONS TO PROTECT EXISTING MAINS AND SERVICES AND MAINTAIN UNINTERRUPTED SUPPLY. ANY DAMAGE INCURRED SHALL BE REPAIRED IMMEDIATELY TO THE SATISFACTION OF THE ENGINEER AT THE CONTRACTOR'S EXPENSE.
  - ALL HORIZONTAL CONTROLS ARE BASED ON MARYLAND STATE COORDINATES.
  - ALL VERTICAL CONTROLS ARE BASED ON U.S.G.S. DATA.
  - ALL PIPE ELEVATIONS SHOWN ARE INVERT ELEVATIONS.
  - CLEAR ALL UTILITIES BY A MINIMUM OF 6". CLEAR ALL POLES BY 2'-0" MINIMUM OR TUNNEL AS REQUIRED. THE OWNER HAS CONTACTED THE UTILITIES COMPANIES AND HAS MADE ARRANGEMENTS FOR BRACING OF POLES AS SHOWN ON THE DRAWINGS. IN THE EVENT THE CONTRACTOR'S WORK REQUIRES THE BRACING OF ADDITIONAL POLES, ANY COST INCURRED BY THE OWNER FOR THE BRACING OF ADDITIONAL POLES OR DAMAGES SHALL BE DEDUCTED FROM MONEY OWED THE CONTRACTOR. THE CONTRACTOR SHALL COORDINATE WITH THE UTILITY COMPANIES TO SCHEDULE THE BRACING OF THE POLES.
  - FOR DETAILS NOT SHOWN ON THE DRAWINGS, AND FOR MATERIALS AND CONSTRUCTION METHODS, USE HOWARD COUNTY DESIGN MANUAL, VOLUME IV, STANDARD SPECIFICATIONS AND DETAILS FOR CONSTRUCTION. THE CONTRACTOR SHALL HAVE A COPY OF VOLUME IV ON THE JOB.
  - WHERE TEST PITS HAVE BEEN MADE ON EXISTING UTILITIES, THEY ARE NOTED BY THE SYMBOL AT THE LOCATION OF THE TEST PIT. A NOTE OR NOTES CONTAINING THE RESULTS OF THE TEST PIT OR PITS IS INCLUDED ON THE DRAWINGS. EXISTING UTILITIES IN THE VICINITY OF THE PROPOSED WORK FOR WHICH TEST PITS HAVE NOT BEEN DUG SHALL BE LOCATED BY THE CONTRACTOR TWO WEEKS IN ADVANCE OF CONSTRUCTION OPERATIONS AT HIS OWN EXPENSE.
  - CONTRACTOR SHALL NOTIFY THE FOLLOWING UTILITIES OR AGENCIES AT LEAST FIVE WORKING DAYS BEFORE STARTING WORK SHOWN ON THESE PLANS:
    - STATE HIGHWAY ADMINISTRATION - 531-5533
    - BALTIMORE GAS & ELECTRIC CO. - CONTRACTOR SERVICES 561-2585
    - BALTIMORE GAS & ELECTRIC CO. UNDER GROUND DAMAGE CONTROL - 234-5621
    - BALTIMORE GAS & ELECTRIC CO. TROUBLE SHOOTING - 298-9013
    - MISS UTILITY - 1-559-0100
    - COLONIAL PIPELINE CO. - 795-1390
    - BUREAU OF UTILITIES, HOWARD COUNTY DEPARTMENT OF PUBLIC WORKS - 992-2366
  - TREES AND SHRUBS ARE TO BE PROTECTED FROM DAMAGE TO MAXIMUM EXTENT. TREES AND SHRUBS LOCATED WITHIN THE CONSTRUCTION STRIP ARE NOT TO BE REMOVED OR DAMAGED BY THE CONTRACTOR.
  - CONTRACTOR SHALL REMOVE TREES, STUMPS AND ROOTS ALONG LINE OF EXCAVATION. PAYMENT FOR SUCH REMOVAL SHALL BE INCLUDED IN THE UNIT PRICE BID FOR CONSTRUCTION OF THE MAIN.
  - ALL WATER MAINS TO BE D.I.P. UNLESS OTHERWISE NOTED.
  - TOPS OF ALL WATER MAINS TO HAVE A MINIMUM OF 3'-6" COVER UNLESS OTHERWISE NOTED.
  - VALVES ADJACENT TO TEES SHALL BE STRAPPED TO TEES.
  - ALL FITTINGS SHALL BE BUTTRESSED OR ANCHORED WITH CONCRETE IN ACCORDANCE WITH THE STANDARD DETAILS UNLESS OTHERWISE PROVIDED FOR ON THE DRAWINGS.
  - FIRE HYDRANTS SHALL BE SET TO THE BURY LINE ELEVATIONS SHOWN ON THE DRAWINGS. ALL FIRE HYDRANTS SHALL BE STRAPPED AND BUTTRESSED WITH CONCRETE IN ACCORDANCE WITH STANDARD DETAILS. SOIL AROUND THE FIRE HYDRANT SHALL BE COMPACTED IN ACCORDANCE WITH SECTION 1003 AND 1008 OF THE STANDARD SPECIFICATIONS.
  - THE CONTRACTOR SHALL NOT OPERATE ANY WATER MAIN VALVES ON THE EXISTING WATER SYSTEM.
  - ALL SEWER MAINS SHALL BE C.S.P. - R.C.S.P. - W.C.P. - A.C.P. - CLASS 2400 OR P.V.C. UNLESS OTHERWISE NOTED.
  - THE CONTRACTOR SHALL PROVIDE A JOINT IN ALL SEWER MAINS WITHIN 2'-0" OF EXTERIOR MANHOLE WALL.
  - ALL MANHOLES SHALL BE 4'-0" INSIDE DIAMETER UNLESS OTHERWISE NOTED.
  - MANHOLES SHOWN WITH 12" AND 16" WALLS ARE BRICK MANHOLES ONLY.
  - MANHOLES DESIGNATED W.T. IN PLAN AND PROFILE SHALL HAVE WATERTIGHT FRAME AND COVERS, STANDARD DETAIL 3.5.52 WHERE WATERTIGHT MANHOLE FRAME AND COVER IS USED, SET TOP OF FRAME 1'-6" ABOVE FINISHED GRADE UNLESS OTHERWISE NOTED ON THE DRAWINGS.
  - HOUSE(S) WITH THE SYMBOL "C.N.S." INDICATES THAT CELLAR CANNOT BE SERVED.
  - ALL WATER CONNECTIONS SHALL BE SET FOR INSIDE METER SETTING.

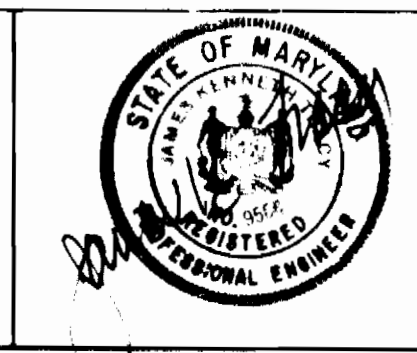
ITEM	QUANTITY	AS-BUILT	SUPPLIER
6" SEWER	1180 LF	1177 LF	A & P
6" S.H.C.	610 LF	628 LF	A & P
V.F. MANHOLE	77 LF	6	YORK CONCRETE
6" WATER	897 LF	1191 LF	A & P
6" WATER	365 LF	250 LF	A & P
1" W.H.C.	421 LF	719 LF	A & P
3/4" W.H.C.	431 LF	229 LF	A & P
6" VALVES	1	1EA	A & P
6" VALVES (EXC)	2	2EA	A & P
FIRE HYDRANT	3	3EA	A & P
1/2" BLOWOFF	2	2EA	A & P

DEPARTMENT OF PUBLIC WORKS  
HOWARD COUNTY, MARYLAND

*John F. ...* 7-22-86  
CHIEF, BUREAU OF UTILITIES DATE

*John F. ...* 7-22-86  
CHIEF, LAND DEVELOPMENT DIVISION DATE

TRACY, SCHULTE & ASSOCIATES INC.  
planning architecture engineering  
8450 Baltimore National Pike Suite 34  
Ellicott City, Maryland 21043



15 KAM					
JRN LRC					
HR JKT					
DATE 7-25-86	BY	NO	REVISION	DATE	DESCRIPTION

PLAN OF  
WATER AND SEWER MAINS

LONG GATE  
SECTION 1, AREA 3  
ELECTION DISTRICT NO. 2  
CONTRACT NO. 24-1511-D

SCALE AS SHOWN

SHEET 1 OF 2

