

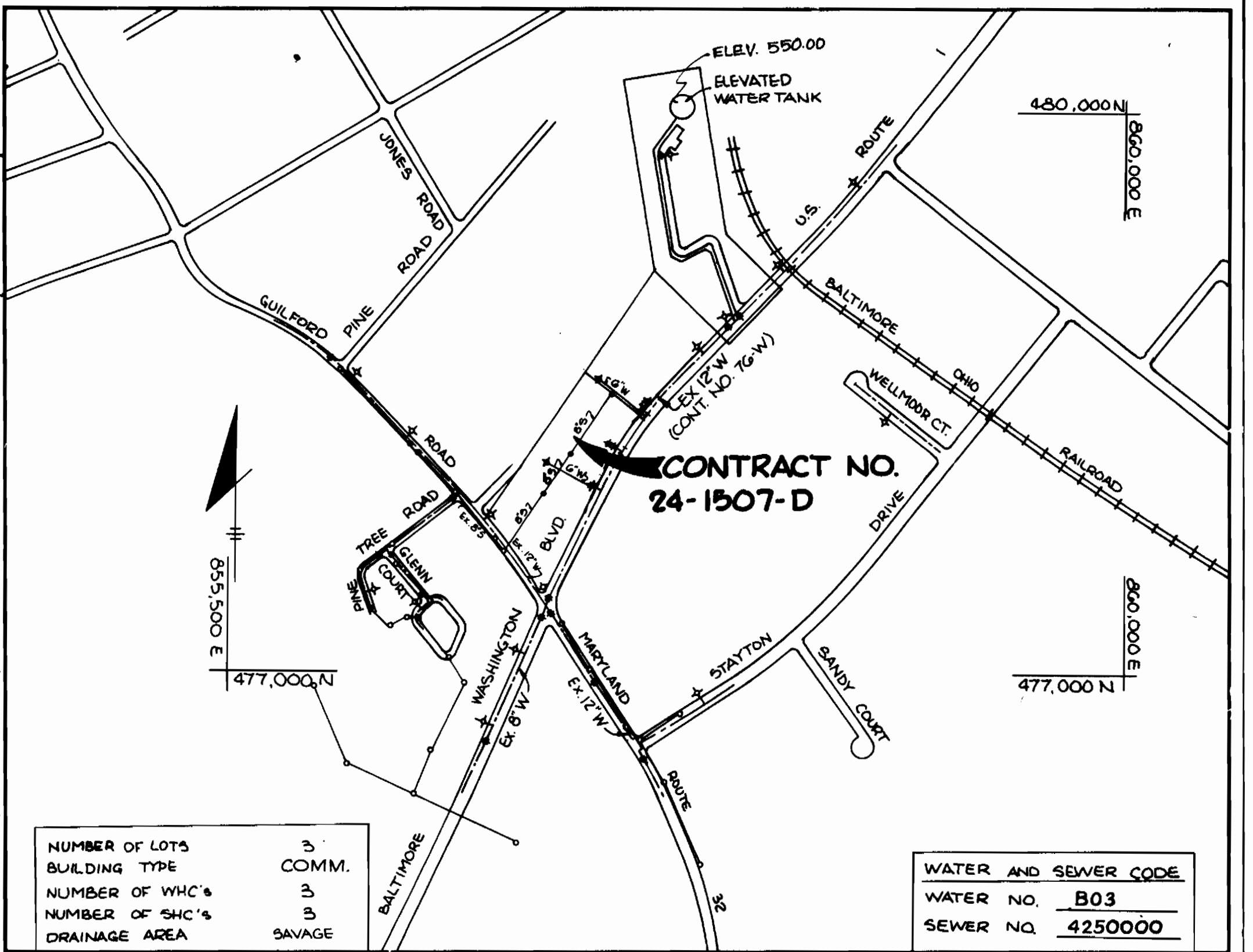
HOWARD SOIL CONSERVATION DISTRICT:
REVIEWED FOR HOWARD SOIL CONSERVATION DISTRICT
AND MEETS TECHNICAL REQUIREMENTS.

J. Kelnitz 8/26/86
U.S. SOIL CONSERVATION SERVICE DATE

Stephen L. Fidler 8/26/86
HOWARD SOIL CONSERVATION DISTRICT DATE

SEDIMENT CONTROL MEASURES FOR THIS CONTRACT WILL BE
IMPLEMENTED IN ACCORDANCE WITH ARTICLE #15 OF THE
HOWARD COUNTY STANDARD SPECIFICATIONS AND AS PER
ROAD CONSTRUCTION PLANS #F-86-154.

BA ASSOCIATES
LTD. PARTNERSHIP
1055/16-5



NUMBER OF LOTS	3
BUILDING TYPE	COMM.
NUMBER OF WHC'S	3
NUMBER OF SHC'S	3
DRAINAGE AREA	SAVAGE

WATER AND SEWER CODE	
WATER NO.	803
SEWER NO.	4250000

VICINITY MAP
SCALE: 1" = 600'

GENERAL NOTES

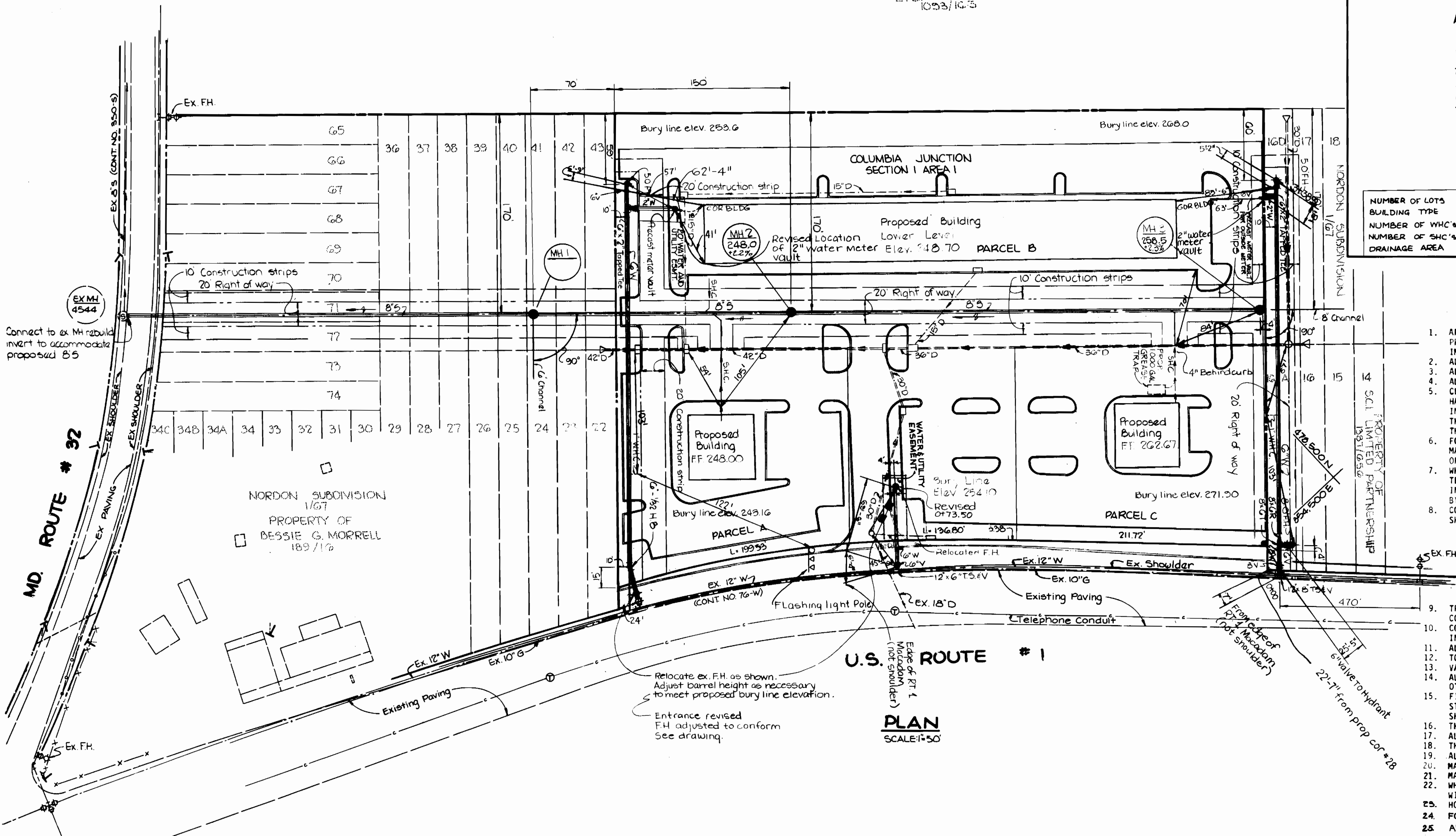
- APPROXIMATE LOCATION OF EXISTING MAINS ARE SHOWN. THE CONTRACTOR SHALL TAKE ALL NECESSARY PRECAUTIONS TO PROTECT EXISTING MAINS AND SERVICES AND MAINTAIN UNINTERRUPTED SUPPLY. ANY DAMAGE INCURRED SHALL BE REPAIRED IMMEDIATELY TO THE SATISFACTION OF THE ENGINEER AT THE CONTRACTOR'S EXPENSE.
- ALL HORIZONTAL CONTROLS ARE BASED ON MARYLAND STATE COORDINATES.
- ALL VERTICAL CONTROLS ARE BASED ON U.S.G.S. DATA.
- ALL PIPE ELEVATIONS SHOWN ARE INVERT ELEVATIONS.
- CLEAR ALL UTILITIES BY A MINIMUM OF 6". CLEAR ALL POLES BY 2'-0" MINIMUM OR TUNNEL AS REQUIRED. THE OWNER HAS CONTACTED THE UTILITIES COMPANIES AND HAS MADE ARRANGEMENTS FOR BRACING OF POLES AS SHOWN ON THE DRAWINGS. IN THE EVENT THE CONTRACTOR'S WORK REQUIRES THE BRACING OF ADDITIONAL POLES, ANY COST INCURRED BY THE OWNER FOR THE BRACING OF ADDITIONAL POLES OR DAMAGES SHALL BE DEDUCTED FROM MONEY OWED THE CONTRACTOR. THE CONTRACTOR SHALL COORDINATE WITH THE UTILITY COMPANIES TO SCHEDULE THE BRACING OF THE POLES.
- FOR DETAILS NOT SHOWN ON THE DRAWINGS, AND FOR MATERIALS AND CONSTRUCTION METHODS, USE HOWARD COUNTY DESIGN MANUAL, VOLUME IV, STANDARD SPECIFICATIONS AND DETAILS FOR CONSTRUCTION. THE CONTRACTOR SHALL HAVE A COPY OF VOLUME IV ON THE JOB.
- WHERE TEST PITS HAVE BEEN MADE ON EXISTING UTILITIES, THEY ARE NOTED BY THE SYMBOL AT THE LOCATION OF THE TEST PIT. A NOTE OR NOTES CONTAINING THE RESULTS OF THE TEST PIT OR PITS IS INCLUDED ON THE DRAWINGS. EXISTING UTILITIES IN THE VICINITY OF THE PROPOSED WORK FOR WHICH TEST PITS HAVE NOT BEEN DUG SHALL BE LOCATED BY THE CONTRACTOR TWO WEEKS IN ADVANCE OF CONSTRUCTION OPERATIONS AT HIS OWN EXPENSE.
- CONTRACTOR SHALL NOTIFY THE FOLLOWING UTILITIES OR AGENCIES AT LEAST FIVE WORKING DAYS BEFORE STARTING WORK SHOWN ON THESE PLANS:

- STATE HIGHWAY ADMINISTRATION - 531-5533
- BALTIMORE GAS & ELECTRIC CO. - CONTRACTOR SERVICES 561-2585
- BALTIMORE GAS & ELECTRIC CO. UNDER GROUND DAMAGE CONTROL - 234-5621
- BALTIMORE GAS & ELECTRIC CO. TROUBLE SHOOTING - 298-9013
- MISS UTILITY - 1-559-0100
- COLONIAL PIPELINE CO. - 795-1390
- BUREAU OF UTILITIES, HOWARD COUNTY DEPARTMENT OF PUBLIC WORKS - 992-2366

- TREES AND SHRUBS ARE TO BE PROTECTED FROM DAMAGE TO MAXIMUM EXTENT. TREES AND SHRUBS LOCATED WITHIN THE CONSTRUCTION STRIP ARE NOT TO BE REMOVED OR DAMAGED BY THE CONTRACTOR.
- CONTRACTOR SHALL REMOVE TREES, STUMPS AND ROOTS ALONG LINE OF EXCAVATION. PAYMENT FOR SUCH REMOVAL SHALL BE INCLUDED IN THE UNIT PRICE BID FOR CONSTRUCTION OF THE MAIN.
- ALL WATER MAINS TO BE D.I.P. UNLESS OTHERWISE NOTED.
- TOPS OF ALL WATER MAINS TO HAVE A MINIMUM OF 3'-1/2" COVER UNLESS OTHERWISE NOTED.
- VALVES ADJACENT TO TEES SHALL BE STRAPPED TO TEES.
- ALL FITTINGS SHALL BE BUTTRESSED OR ANCHORED WITH CONCRETE IN ACCORDANCE WITH THE STANDARD DETAILS UNLESS OTHERWISE PROVIDED FOR ON THE DRAWINGS.
- FIRE HYDRANTS SHALL BE SET TO THE BURY LINE ELEVATIONS SHOWN ON THE DRAWINGS. ALL FIRE HYDRANTS SHALL BE STRAPPED AND BUTTRESSED WITH CONCRETE IN ACCORDANCE WITH STANDARD DETAILS. SOIL AROUND THE FIRE HYDRANT SHALL BE COMPACTED IN ACCORDANCE WITH SECTION 1003 & 1008 OF THE STANDARD SPECIFICATIONS.
- THE CONTRACTOR SHALL NOT OPERATE ANY WATER MAIN VALVES ON THE EXISTING WATER SYSTEM.
- ALL SEWER MAINS SHALL BE C.S.P.X., R.C.S.P., V.C.P.X., A.C.P. CLASS 2400 OR P.V.C. UNLESS OTHERWISE NOTED.
- THE CONTRACTOR SHALL PROVIDE A JOINT IN ALL SEWER MAINS WITHIN 2'-0" OF EXTERIOR MANHOLE WALL.
- ALL MANHOLES SHALL BE 4'-0" INSIDE DIAMETER UNLESS OTHERWISE NOTED.
- MANHOLES SHOWN WITH 12" AND 16" WALLS ARE BRICK MANHOLES ONLY.
- MANHOLES DESIGNATED W.T. IN PLAN AND PROFILE SHALL HAVE WATERTIGHT FRAME AND COVERS, STANDARD DETAIL G 5.52.
- WHERE WATERTIGHT MANHOLE FRAME AND COVER IS USED, SET TOP OF FRAME 1'-6" ABOVE FINISHED GRADE UNLESS OTHERWISE NOTED ON THE DRAWINGS.
- HOUSE(S) WITH THE SYMBOL "C.N.S." INDICATES THAT CELLAR CANNOT BE SERVED.
- FOR COPPER WATER HOUSE CONNECTIONS UTILIZE FLARED TYPE FITTINGS ONLY
- ALL WATER HOUSE CONNECTIONS SHALL BE FOR AN INSIDE METER SETTING

AS-BUILTS RP SUTTON/DFI

ITEM	QUANTITY	AS-BUILT	SUPPLIER
8" SEWER	(1) 962 L.F.	962 L.F.	SDR35 PVC/CHANDLER
6" SHC	(2) 70 L.F.	70 L.F.	"
VF MANHOLE	(3) 82 L.F.	82 L.F.	"
6" WATER	(4) 30 L.F.	27	CLASS DIP/ATLANTIC
6" WATER	(2) 710 L.F.	713.5	"
1" WHC	(2) 20 L.F.	20 L.F.	TYPE "K" COPPER/MUELLER
2" WHC	(2) 20 L.F.	20 L.F.	"
12" x 6" 154 VALVE	(1)	1	AWWA 125/MUELLER
12" x 8" 154 VALVE	(1)	1	"
FIRE HYDRANTS	(3)	3	A473/MUELLER
6" VALVES	(1)	1	AWWA C 509/MUELLER
METER VAULT	(1)	1	H1413 CUSTOM METERS/AM
RELOCATED F.H.	(1)	1	"
6" VALVES	(4)	4	AWWA C 509/MUELLER



CURVE ON FILL MATERIAL
ATEC TEST RESULTS
REVISION ON EGRESS & RELOCATED F.H.

DEPARTMENT OF PUBLIC WORKS
HOWARD COUNTY, MARYLAND

George W. ... 9-3-86
CHIEF, BUREAU OF UTILITIES DATE

Stephen L. Fidler 9-3-86
CHIEF, LAND DEVELOPMENT DIVISION DATE

TRACY, SCHULTE
& ASSOCIATES INC.
planning architecture engineering
8450 Baltimore National Pike Suite 34
Ellicott City, Maryland 21043

KAM				
KAM				
RJW	BJM	2	MOVED FH	7-28-86
	JC	1	ADDED 2" WHC @ NORTH END OF BLDG 'B'	6-17-86
	JC	1	ADDED 2" METER VAULT @ SOUTH END OF BLDG 'B'	6-17-86
DATE	BY	NO.	DESCRIPTION	DATE

PLAN OF
WATER AND SEWER MAINS

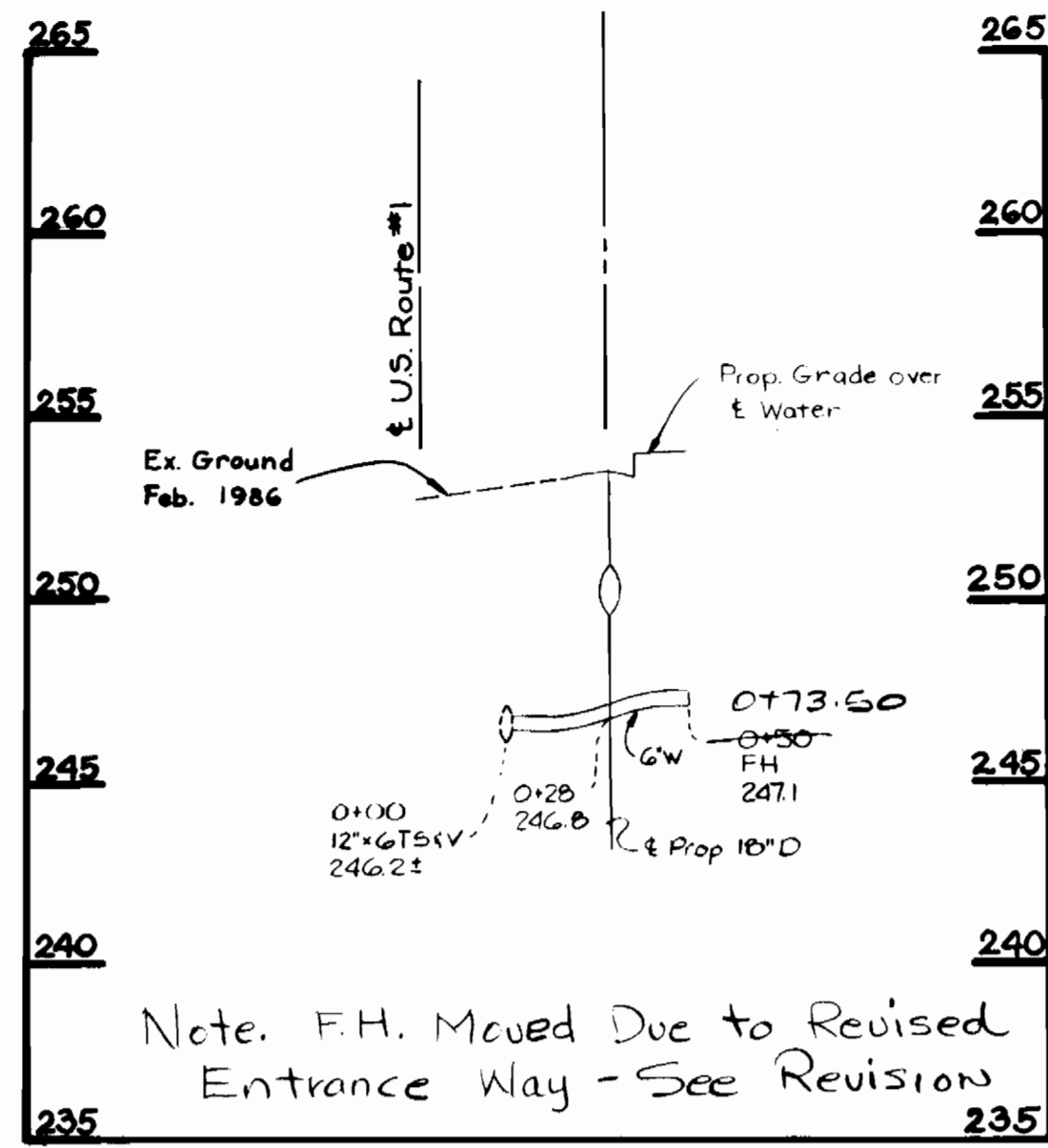
SCALE MAP NO. 48 BLOCK NO. 1

COLUMBIA JUNCTION
SECTION ONE, AREA ONE
ELECTION DISTRICT NO. 6
CONTRACT NO. 24-1507-D

SCALE AS SHOWN

SHEET 1 OF 2

REVISED AS TO LOCATION
RELOCATED FIRE HYD.

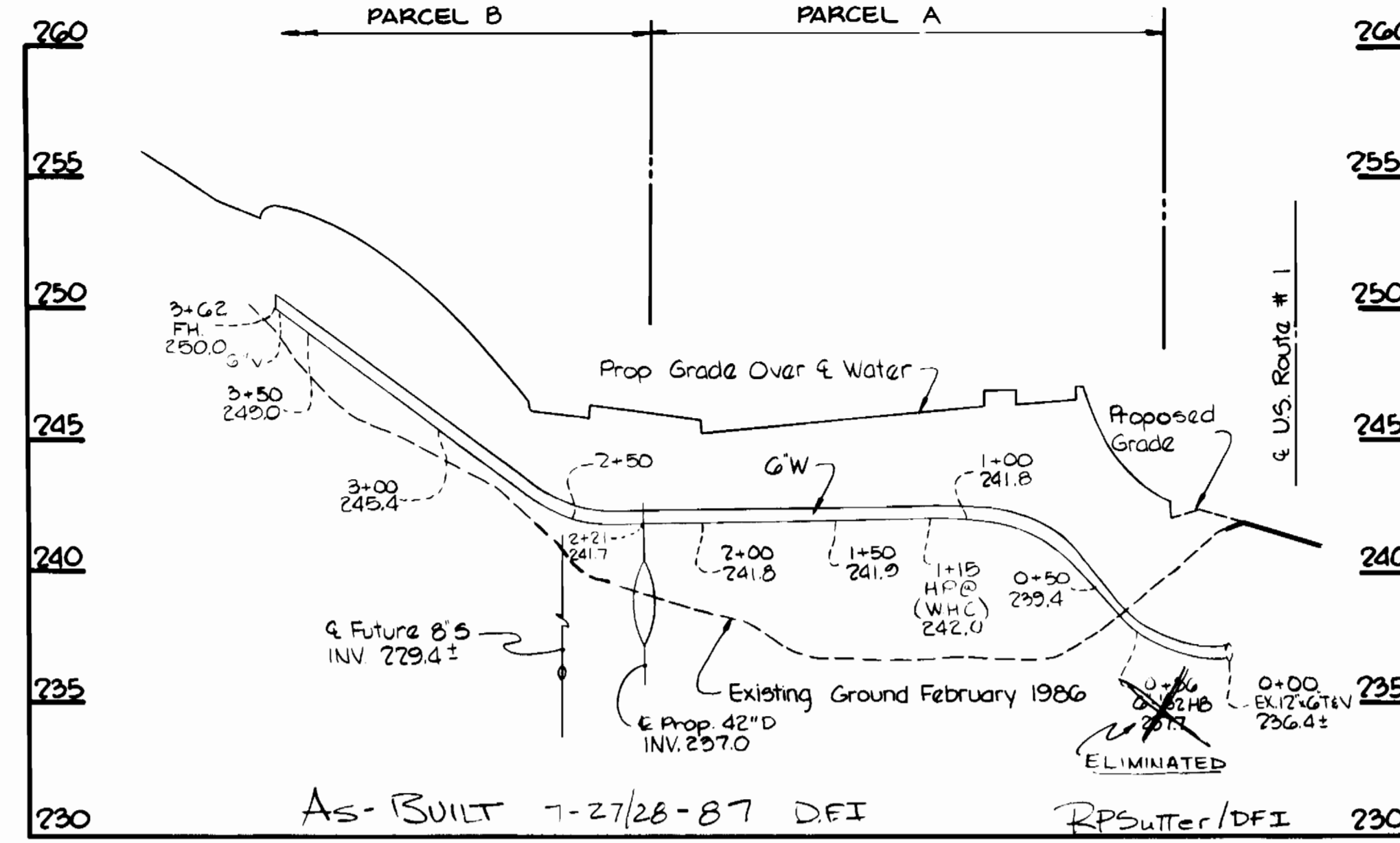


AS BUILT
7/14/87
R.P. SUTTON/D.F.I.

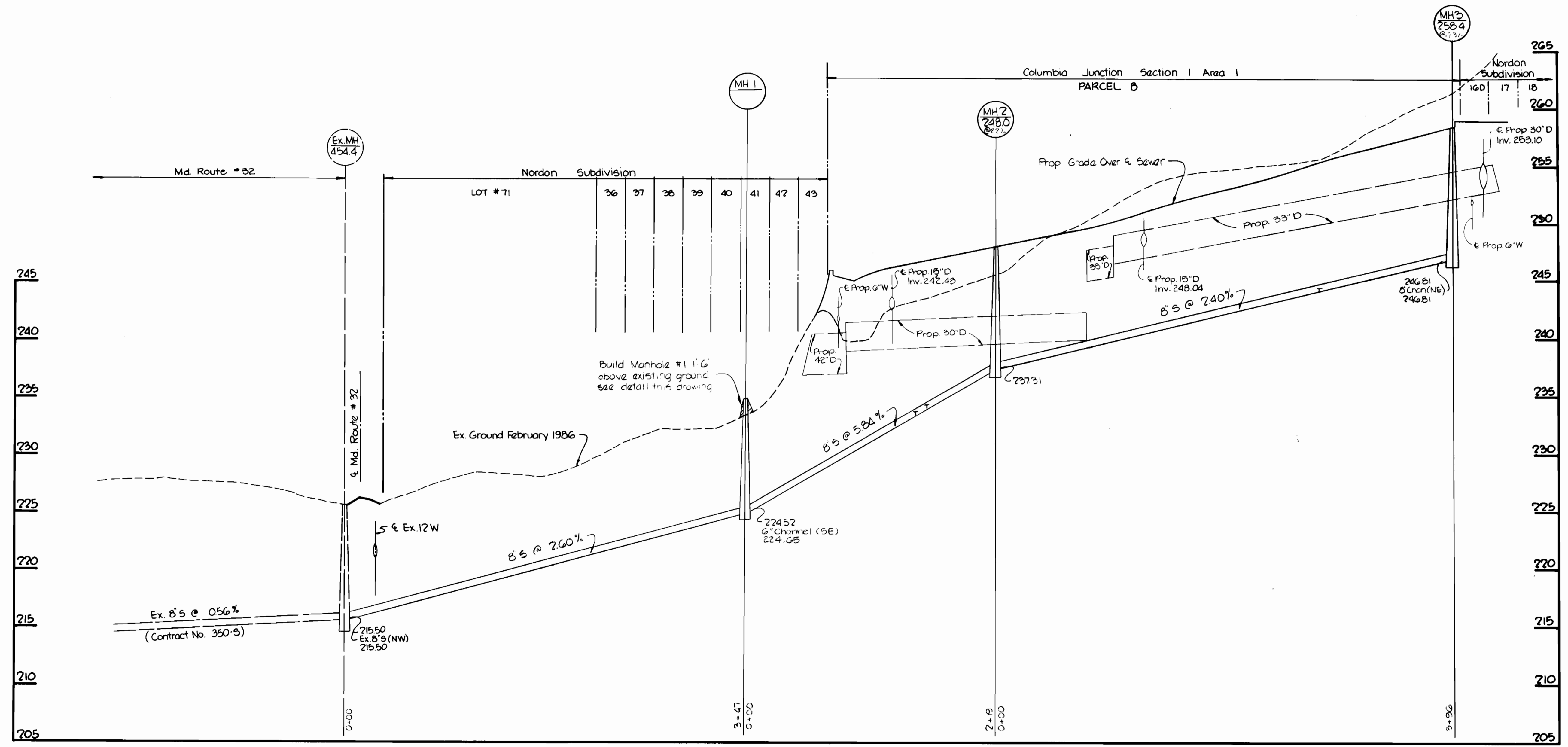
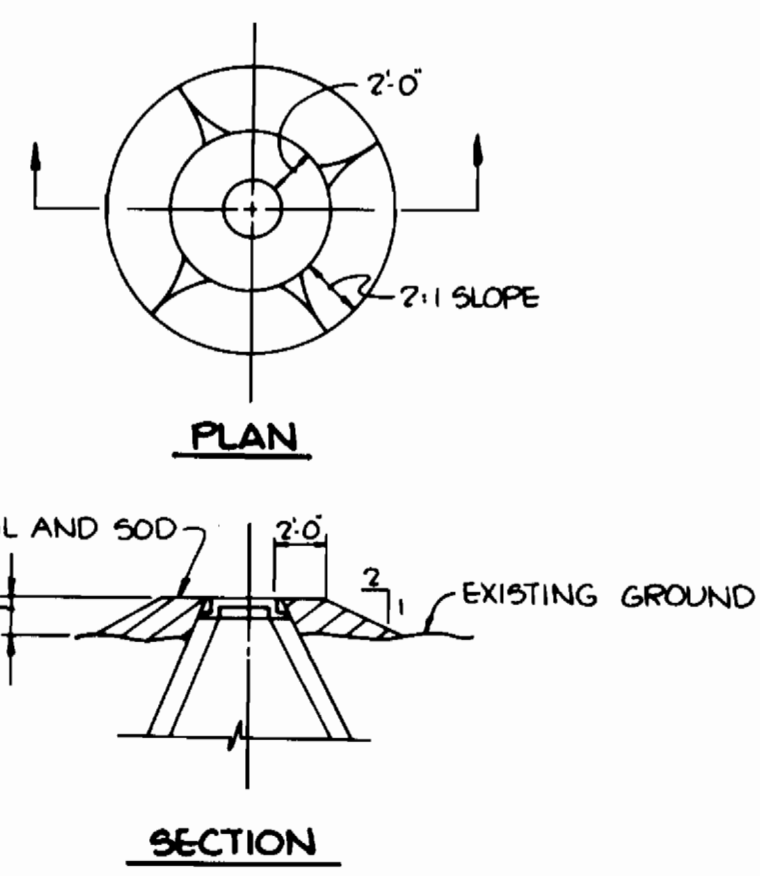
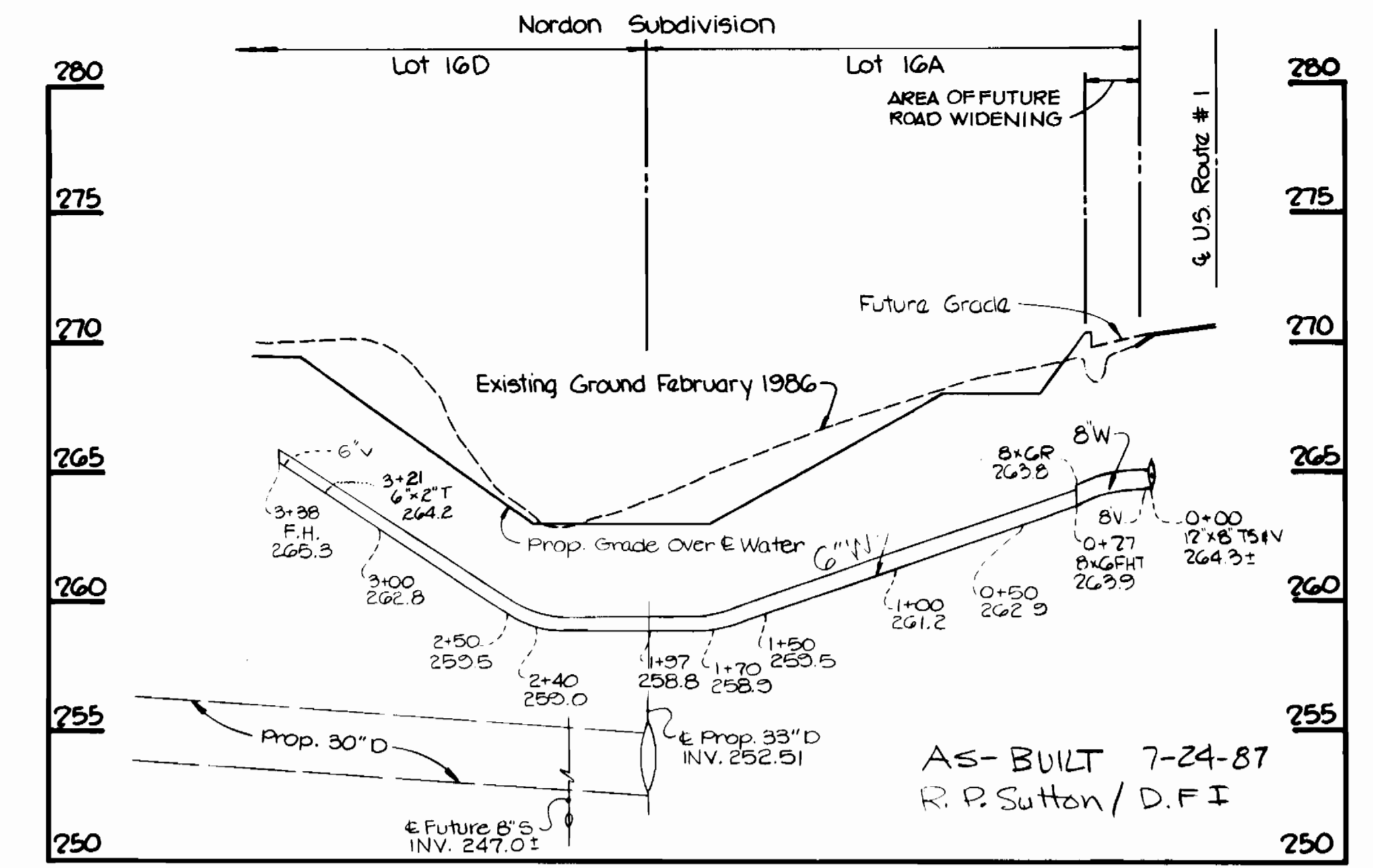
SEWER HOUSE CONNECTIONS
INVERT ELEVATION AT PROPERTY LINE

STATION	PARCEL	INVERT
MANHOLE #1		
1+40 L	B	233.42
1+50 R	A	234.41
MANHOLE #2		
3+25 R	C	245.71

G" WATER - SOUTH END OF SITE



G" WATER - NORTH END OF SITE



DEPARTMENT OF PUBLIC WORKS
HOWARD COUNTY, MARYLAND
 Director of Public Works: *George N. Neumy* 9-3-86
 Chief, Bureau of Engineering: *William E. Brown* 9-2-86
 Chief, Bureau of Utilities: *Robert M. Brown* 9-2-86
 Chief, Land Development Division: *William E. Brown* 9-2-86

TRACY, SCHULTE & ASSOCIATES INC.
 planning architecture engineering
 8450 Baltimore National Pike Suite 34
 Ellicott City, Maryland 21043



DES: KAM			
DRN: KAM			
CHK: RJW			
DATE: 6-15-86	JC	1	ADD 6"x2" TEE @ STA. 3+21 INV. 264.2
BY: NO.			REVISION
			DATE: 6-17-86

PROFILE OF WATER AND SEWER MAINS
 600' SCALE MAP NO. 48 BLOCK NO. 1

AS BUILT
 COLUMBIA JUNCTION SECTION ONE, AREA ONE
 ELECTION DISTRICT NO. 6
 CONTRACT NO. 24-1507-D

H: 1"=50'
 V: 1"=5'
 SHEET 2 OF 2