

WATER AND SEWER CODE
 WATER NO. F09
 SEWER NO. S750638

VICINITY MAP
 SCALE: 1" = 600'

GENERAL NOTES

- APPROXIMATE LOCATION OF EXISTING MAINS ARE SHOWN. THE CONTRACTOR SHALL TAKE ALL NECESSARY PRECAUTIONS TO PROTECT EXISTING MAINS AND SERVICES AND MAINTAIN UNINTERRUPTED SUPPLY. ANY DAMAGE INCURRED SHALL BE REPAIRED IMMEDIATELY TO THE SATISFACTION OF THE ENGINEER AT THE CONTRACTOR'S EXPENSE.
- ALL HORIZONTAL CONTROLS ARE BASED ON MARYLAND STATE COORDINATES.
- ALL VERTICAL CONTROLS ARE BASED ON U.S.G.S. DATA.
- ALL PIPE ELEVATIONS SHOWN ARE INVERT ELEVATIONS.
- CLEAR ALL UTILITIES BY A MINIMUM OF 6". CLEAR ALL POLES BY 2'-0" MINIMUM OR TUNNEL AS REQUIRED. THE OWNER HAS CONTACTED THE UTILITIES COMPANIES AND HAS MADE ARRANGEMENTS FOR BRACING OF POLES AS SHOWN ON THE DRAWINGS. IN THE EVENT THE CONTRACTOR'S WORK REQUIRES THE BRACING OF ADDITIONAL POLES, ANY COST INCURRED BY THE OWNER FOR THE BRACING OF ADDITIONAL POLES OR DAMAGES SHALL BE DEDUCTED FROM MONEY OWNED THE CONTRACTOR. THE CONTRACTOR SHALL COORDINATE WITH THE UTILITY COMPANIES TO SCHEDULE THE BRACING OF THE POLES.
- FOR DETAILS NOT SHOWN ON THE DRAWINGS, AND FOR MATERIALS AND CONSTRUCTION METHODS, USE HOWARD COUNTY DESIGN MANUAL, VOLUME IV, STANDARD SPECIFICATIONS AND DETAILS FOR CONSTRUCTION. THE CONTRACTOR SHALL HAVE A COPY OF VOLUME IV ON THE JOB.
- WHERE TEST PITS HAVE BEEN MADE ON EXISTING UTILITIES, THEY ARE NOTED BY THE SYMBOL [] AT THE LOCATION OF THE TEST PIT. A NOTE OR NOTES CONTAINING THE RESULTS OF THE TEST PIT OR PITS IS INCLUDED ON THE DRAWINGS. EXISTING UTILITIES (IN THE VICINITY OF THE PROPOSED WORK FOR WHICH TEST PITS HAVE NOT BEEN DUG SHALL BE LOCATED BY THE CONTRACTOR TWO WEEKS IN ADVANCE OF CONSTRUCTION OPERATIONS AT HIS OWN EXPENSE.
- CONTRACTOR SHALL NOTIFY THE FOLLOWING UTILITIES OR AGENCIES AT LEAST FIVE WORKING DAYS BEFORE STARTING WORK SHOWN ON THESE PLANS:

STATE HIGHWAY ADMINISTRATION - 531-5533
 BALTIMORE GAS & ELECTRIC CO. - CONTRACTOR SERVICES 561-2585
 BALTIMORE GAS & ELECTRIC CO. UNDER GROUND DAMAGE CONTROL - 234-5621
 BALTIMORE GAS & ELECTRIC CO. TROUBLE SHOOTING - 298-9013
 MISS UTILITY - 1-559-0100
 COLONIAL PIPELINE CO. - 795-1390
 BUREAU OF UTILITIES, HOWARD COUNTY DEPARTMENT OF PUBLIC WORKS - 992-2366

- TREES AND SHRUBS ARE TO BE PROTECTED FROM DAMAGE TO MAXIMUM EXTENT. TREES AND SHRUBS LOCATED WITHIN THE CONSTRUCTION STRIP ARE NOT TO BE REMOVED OR DAMAGED BY THE CONTRACTOR.
- CONTRACTOR SHALL REMOVE TREES, STUMPS AND ROOTS ALONG LINE OF EXCAVATION. PAYMENT FOR SUCH REMOVAL SHALL BE INCLUDED IN THE UNIT PRICE BID FOR CONSTRUCTION OF THE MAIN.
- ALL WATER MAINS TO BE D.I.P. UNLESS OTHERWISE NOTED.
- TOPS OF ALL WATER MAINS TO HAVE A MINIMUM OF 3'-1" COVER UNLESS OTHERWISE NOTED.
- VALVES ADJACENT TO TEES SHALL BE STRAPPED TO TEES.
- ALL FITTINGS SHALL BE BUTTRESSED OR ANCHORED WITH CONCRETE IN ACCORDANCE WITH THE STANDARD DETAILS UNLESS OTHERWISE PROVIDED FOR ON THE DRAWINGS.
- FIRE HYDRANTS SHALL BE SET TO THE BURY LINE ELEVATIONS SHOWN ON THE DRAWINGS. ALL FIRE HYDRANTS SHALL BE STRAPPED AND BUTTRESSED WITH CONCRETE IN ACCORDANCE WITH STANDARD DETAILS. SOIL AROUND THE FIRE HYDRANT SHALL BE COMPACTED IN ACCORDANCE WITH SECTION 1003.4.1008 OF THE STANDARD SPECIFICATIONS.
- THE CONTRACTOR SHALL NOT OPERATE ANY WATER MAIN VALVES ON THE EXISTING WATER SYSTEM.
- ALL SEWER MAINS SHALL BE C.S.P.X., R.C.S.P., V.C.P.X., A.C.P. CLASS 2400 OR P.V.C. UNLESS OTHERWISE NOTED.
- THE CONTRACTOR SHALL PROVIDE A JOINT IN ALL SEWER MAINS WITHIN 2'-0" OF EXTERIOR MANHOLE WALL.
- ALL MANHOLES SHALL BE 4'-0" INSIDE DIAMETER UNLESS OTHERWISE NOTED.
- MANHOLES SHOWN WITH 12" AND 18" WALLS ARE BRICK MANHOLES ONLY.
- MANHOLES DESIGNATED W.T. IN PLAN AND PROFILE SHALL HAVE WATERTIGHT FRAME AND COVERS, STANDARD DETAIL B. 5.52 WHERE WATERTIGHT MANHOLE FRAME AND COVER IS USED, SET TOP OF FRAME 1'-6" ABOVE FINISHED GRADE UNLESS OTHERWISE NOTED ON THE DRAWINGS.
- HOUSE(S) WITH THE SYMBOL "C.N.S." INDICATES THAT CELLAR CANNOT BE SERVED.
- ALL WATER CONNECTIONS SHALL BE SET FOR INSIDE METER SETTING.

HOWARD SOIL CONSERVATION DISTRICT:
 REVIEWED FOR SOIL EROSION AND SEDIMENT CONTROL BY THE HOWARD SOIL CONSERVATION DISTRICT AND METS TECHNICAL REQUIREMENTS.

John M. Adams 6-13-86
 U.S. SOIL CONSERVATION SERVICE DATE

THIS PLAN IS APPROVED FOR SOIL EROSION AND SEDIMENT CONTROL BY THE HOWARD SOIL CONSERVATION DISTRICT.

Stephen L. Fisher 6/13/86
 HOWARD SOIL CONSERVATION DISTRICT DATE

SEDIMENT CONTROL MEASURES FOR THIS CONTRACT WILL BE IMPLEMENTED IN ACCORDANCE WITH ARTICLE #15 OF THE HOWARD COUNTY STANDARD SPECIFICATIONS AND AS PER ROAD CONSTRUCTION PLANS #F-86-95

QUANTITIES			
ITEM	QUANTITY	AS-BUILT	SUPPLIER
8" Sewer	1124 LF	696 LF	A&P SUPPLIES
6" S.H.C.	478 LF	455 LF	" "
V.F. Manhole	60 LF	6	YORK SEPTIC TANK
8" Water	1169 VF	1075	A&P SUPPLIES
6" Water	686 LF	636	" "
1" W.H.C.	609 LF	332	" "
3/4" W.H.C.	207 LF	414	" "
8" Valves	3	3	" "
6" Valves (with 1/2" flange)	3	3	" "
Fire Hydrants	2	2	" "
1 1/2" Blowoffs	3	4	" "

* NOTE:
 THESE C.E.'S ARE MINIMUM SERVABLE BY THE SEWER MAINS SHOWN HEREON. NOTE THAT THESE ELEVATIONS ARE LESS THAN THE REQUIRED 2'-0" MINIMUM ABOVE THE 100 YEAR FLOOD PLAIN ELEVATION.

DEPARTMENT OF PUBLIC WORKS
 HOWARD COUNTY, MARYLAND.
Robert M. Bainger 6-16-86
 CHIEF, BUREAU OF UTILITIES

TRACY, SCHULTE & ASSOCIATES INC.
 planning architecture engineering
 8450 Baltimore National Pike Suite 34
 Ellicott City, Maryland 21043



FS: KAM
 DRN: KMN
 CHK: JKT
 DATE: 6-11-86

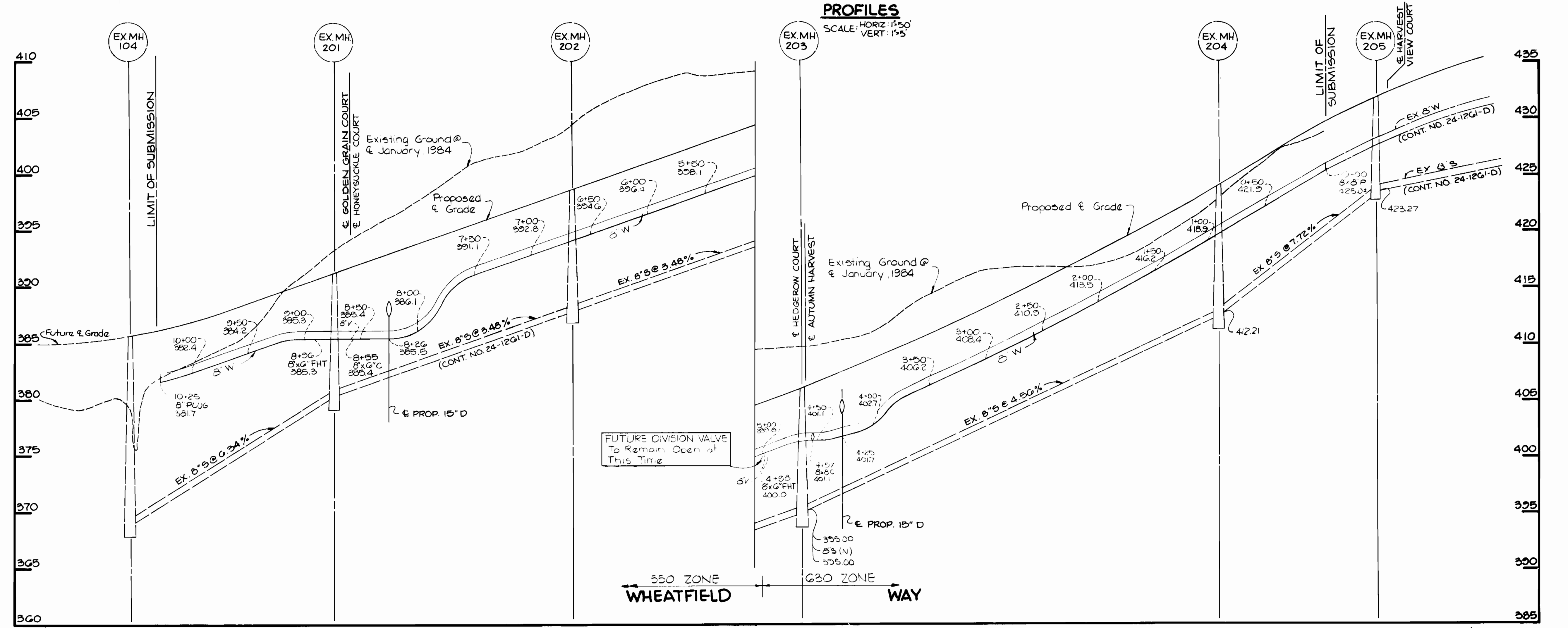
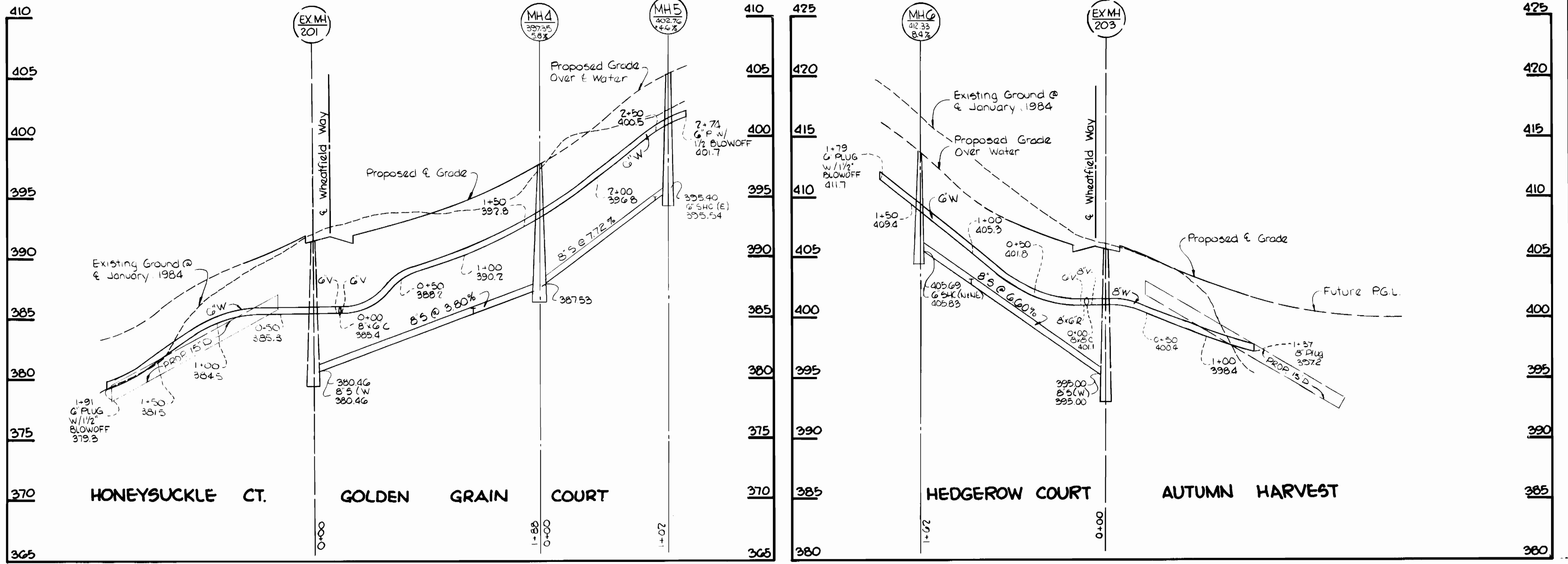
PLAN OF
 WATER AND SEWER MAINS

LONG GATE
 SECTION 1, AREA 2
 ELECTION DISTRICT NO. 2
 CONTRACT NO. 24-1506-D

SCALE AS SHOWN
 SHEET 1 OF 3

SEWER HOUSE CONNECTIONS
INVERT ELEVATION AT PROPERTY LINE

STATION	LOT	INVERT
EX. MANHOLE #104		EX. MANHOLE #201
0+75 R	32	373.02
EX. MANHOLE #201		EX. MANHOLE #202
1+10 R	24/25	364.79
EX. MANHOLE #202		EX. MANHOLE #203
0+22 L	44/45	369.55
0+09 R	20/21	390.07
1+30 R	19	392.92
EX. MANHOLE #203		EX. MANHOLE #204
0+59 R	18	396.15
1+57 L	57/53	407.90
1+76 R	14/11	403.49
2+65 R	14/15	407.54
2+98 L	54/55	409.31
3+06 R	12/13	409.41
EX. MANHOLE #204		EX. MANHOLE #205
0+24 L	56/57	414.88
0+44 R	10/11	416.03
EX. MANHOLE #201		MANHOLE #4
1+31 R	42/43	386.04
MANHOLE #4		MANHOLE #5
0+35 R	40/41	356.34
0+41 R	35	399.80
EX. MANHOLE #203		MANHOLE #6
1+15 L	46/47	402.99
0+41 R	50/51	407.23
0+41 R	48/49	406.45
MANHOLE #1		MANHOLE #2
0+80 R	88/89	365.23
1+26 R	95/96	365.83
1+51 L	26/25	370.09
3+10 R	27/28	379.45
3+26 L	26/27	375.17
MANHOLE #2		MANHOLE #3
0+34 L	22/23	375.92
0+73 R	99	377.88
1+31 R	101/102	379.25



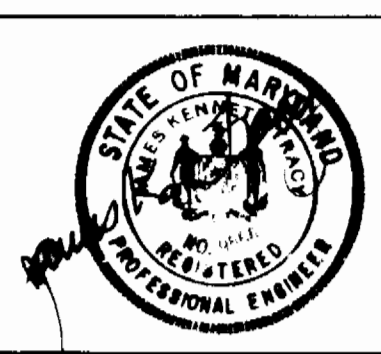
DEPARTMENT OF PUBLIC WORKS
HOWARD COUNTY, MARYLAND

Robert M. Beimer 6-16-86
CHIEF - BUREAU OF UTILITIES

William J. Ray 7-23-86
CHIEF, BUREAU OF ENGINEERING

William J. Ray 7-23-86
CHIEF LAND DEVELOPMENT DIV.

TRACY, SCHULTE
& ASSOCIATES INC
planning architecture engineering
8450 Baltimore National Pike Suite 34
Ellicott City, Maryland 21043



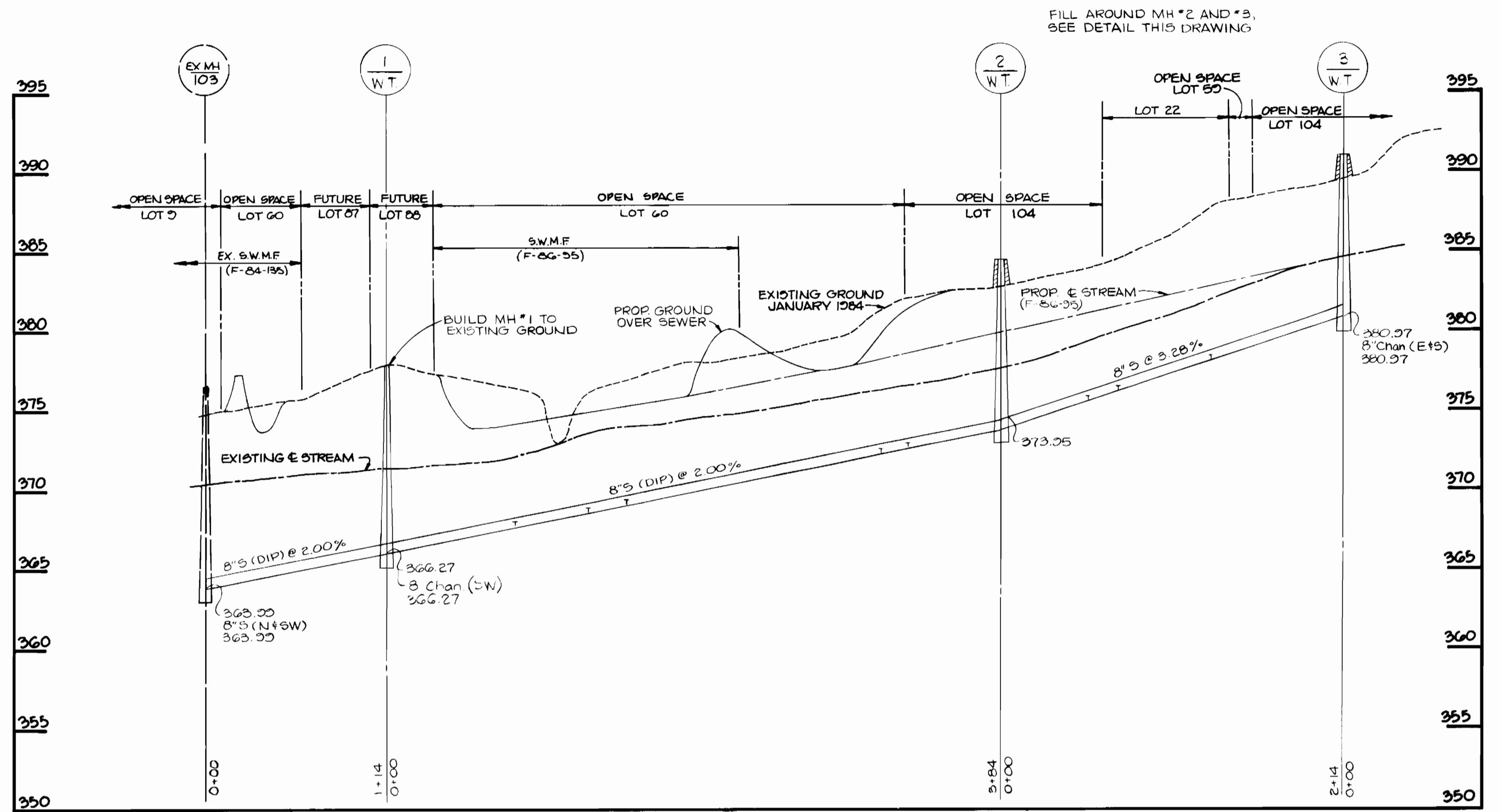
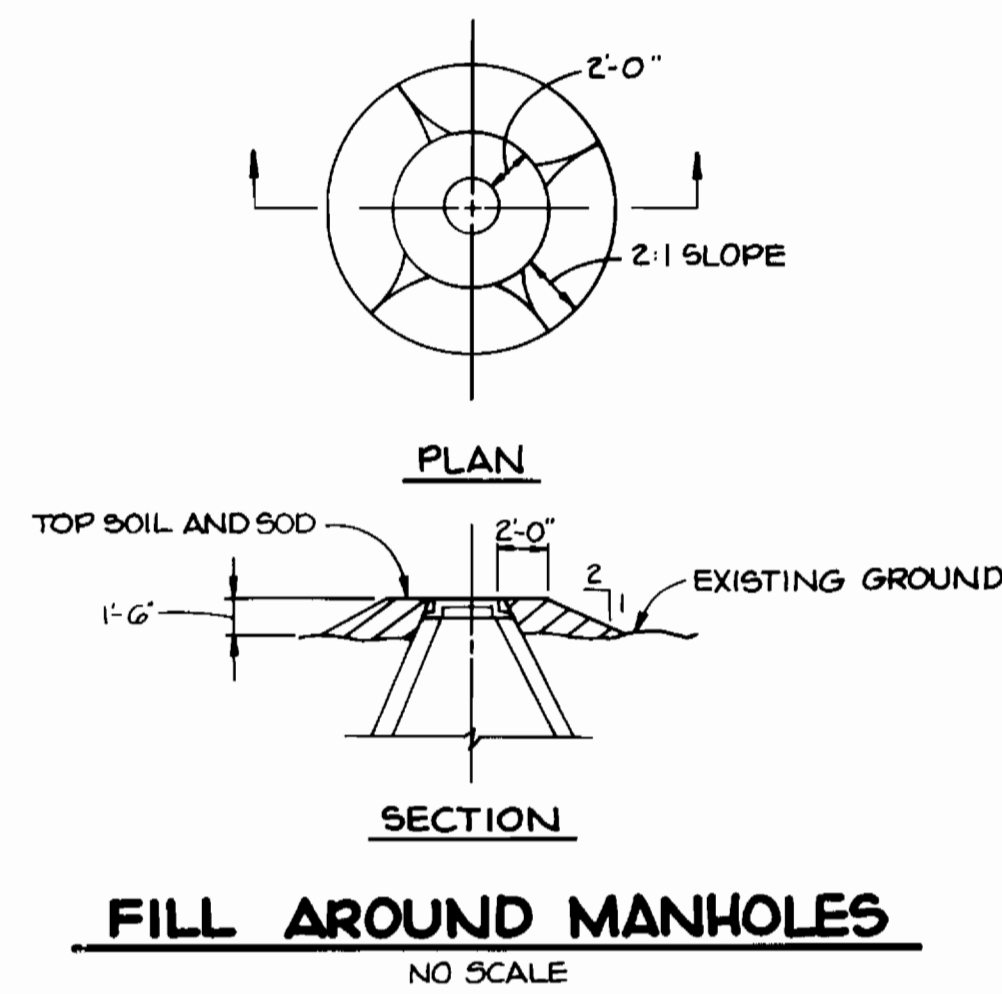
DES: KAM	
DRN: KAM/UB	
CHK: RJW	
DATE: 6-11-86	
BY: NO.	REVISION

PROFILES OF
WATER AND SEWER
MAINS

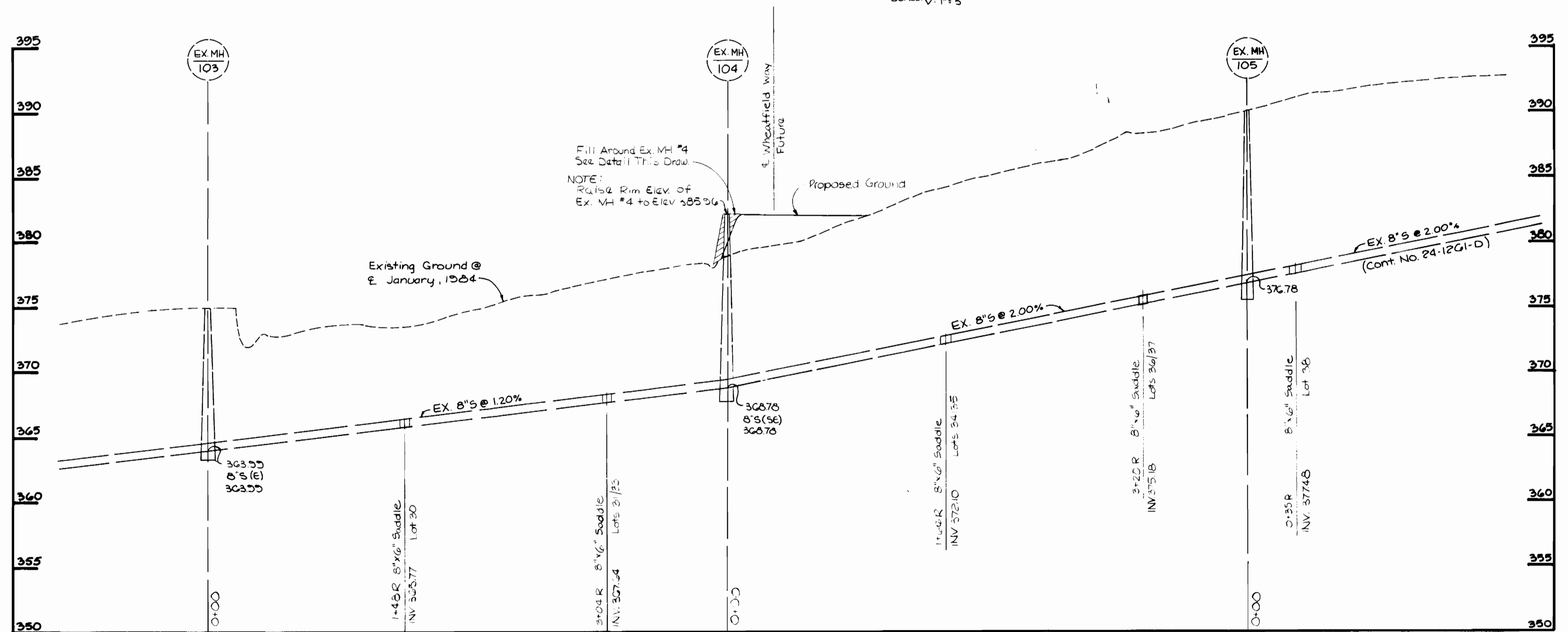
600' SCALE MAP NO. 30 BLOCK NO. 6

LONG GATE
SECTION I, AREA 2
ELECTION DISTRICT NO. 2
CONTRACT NO. 24-1506-D

SCALE AS SHOWN
SHEET 2 OF 3



PROFILE
SCALE: H: 1" = 20'
V: 1" = 5'



PROFILE
SCALE: H: 1" = 20'
V: 1" = 5'

DEPARTMENT OF PUBLIC WORKS
HOWARD COUNTY, MARYLAND

DIRECTOR OF PUBLIC WORKS
Robert M. Benjamin
6-16-86

CHIEF, BUREAU OF ENGINEERING
William B. Brady
7-23-86
CHIEF, LAND DEVELOPMENT DIVISION
William B. Brady
7-23-86

TRACY, SCHULTE
& ASSOCIATES INC.
planning architecture engineering
8450 Baltimore National Pike Suite 34
Ellicott City, Maryland 21043



DES: KAM			
DRN: LRC			
CHK: RJW			
DATE: 6-11-86	BY: NO.	REVISION	DATE

PROFILES OF
SEWER MAINS

600' SCALE MAP NO. 30 BLOCK NO. 6

LONG GATE
SECTION 1, AREA 2
ELECTION DISTRICT NO. 2
CONTRACT NO. 24-1506-D

SCALE AS SHOWN
SHEET 3 OF 3

AS-BUILT 12-5-86