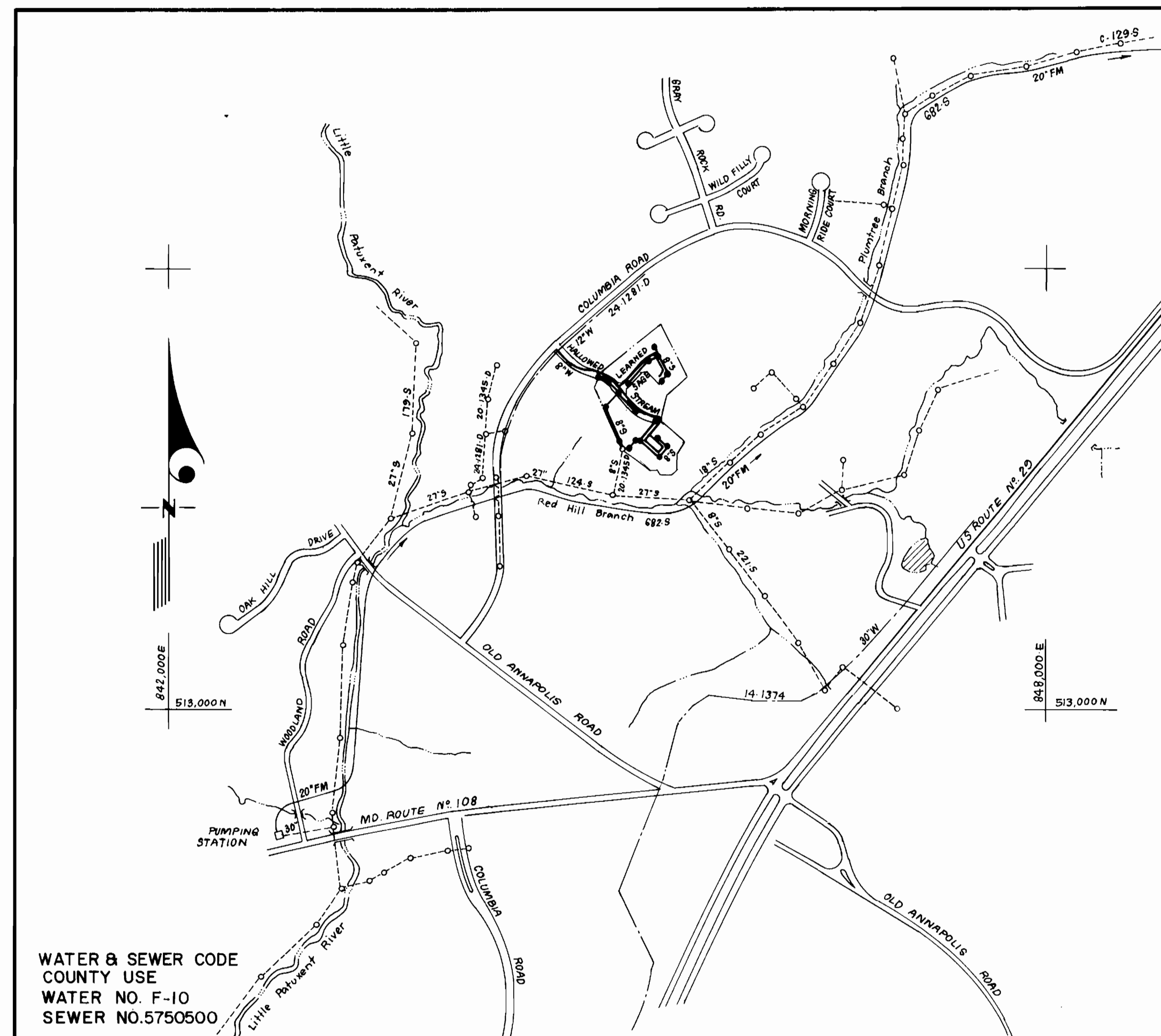


SEWER HOUSE CONNECTION TABLE					
LOTS	Inv. @ R.	Min. C.	LOTS	Inv. @ R.	Min. C.
C-4/C-5	334.9	338.3	C-48/C-49	332.4	335.5
C-6/C-7	337.0	340.4	C-50/C-51	331.9	335.3
C-8	338.4	341.8	C-52/C-53	331.8	335.2
C-9/C-10	340.4	343.8	C-54	330.0	334.3
C-11/C-12	342.3	345.7	C-55/C-56	330.1	333.5
C-13/C-14	344.1	347.5	C-57/C-58	329.2	332.0
C-15/C-16	344.4	347.8	C-59/C-60	329.7	333.0
C-17/C-18	347.4	350.7	C-61/C-62	328.8	332.2
C-19/C-20	345.5	348.9	C-63/C-64	328.6	332.0
C-21	344.3	347.7	C-65/C-66	328.2	331.6
C-22/C-23	344.6	347.9	C-67/C-68	328.0	331.4
C-24/C-25	344.7	348.1	C-69	327.7	331.1
C-26/C-27	345.7	349.1	C-70/C-71	327.5	330.0
C-28/C-29	345.0	348.4	C-72/C-73	327.9	331.3
C-30/C-31	345.3	348.7	C-74/C-75	332.3	335.6
C-32/C-33	345.6	349.0	C-76/C-77	333.1	336.5
C-34	339.5	342.9	C-78/C-79	336.3	339.7
C-35/C-36	337.9	341.3	C-80/C-81	335.6	339.0
C-37/C-38	336.0	339.4	C-82/C-83	334.8	338.2
C-39/C-40	334.6	338.0	C-84/C-85	334.0	337.4
C-41/C-42	336.3	339.7	C-86	327.3	330.7
C-43/C-44	337.0	340.4	C-87/C-88	327.5	330.9
C-46/C-47	332.8	336.2	C-89/C-90	327.8	331.2

TYPE OF BUILDING	Townhouse
Nº OF LOTS	86
Nº OF WHC's	86
Nº OF SHC's	86
DRAINAGE AREA	Route 108 Pumping Station (Patapsco)



WATER & SEWER CODE
COUNTY USE
WATER NO. F-10
SEWER NO. 5750500

VICINITY MAP
SCALE: 1" = 600'

GENERAL NOTES

- Approximate location of existing mains are shown. The contractor shall take all necessary precautions to protect existing mains and services and maintain uninterrupted supply. Any damage incurred shall be repaired immediately to the satisfaction of the Inspector, at the contractor's expense.
- All horizontal controls are based on Maryland State Coordinates.
- All vertical controls are based on U.S.G.S. Datum.
- All pipe elevations shown are invert elevations.
- Clear all utilities by a minimum of 6" clear all poles by 2'-0" minimum or tunnel as required. Any cost incurred to the contractor for tunneling or bracing at poles shall be included in unit prices bid for excavation and backfill.
- For details not shown on the drawings use Howard County Standard Details.
- For materials and construction methods use Howard County Standard Specifications & Ho. Co. Design Manual, Volume IV. The contractor shall have a copy of Volume IV on the job.
- Contractor shall locate existing utilities a minimum of two (2) weeks in advance of construction operations in the vicinity of proposed utilities at his own expense.
- Contractor shall notify the following utilities or agencies at least five (5) working days before starting work shown on these plans.
State Highway Administration - 531-5533
Baltimore Gas & Electric Company - Contractor Services 561-2585
Baltimore Gas & Electric Company - Underground Damage Control 234-5621
Baltimore Gas & Electric Company - Trouble Shooting 298-9013
"Miss Utility" - 1-559-0100
Chesapeake & Potomac (C & P) Telephone Company - 725-9976
Colonial Pipeline Company - 795-1390
Bureau of Utilities Howard County - 992-2366
- Trees are to be protected from damage to maximum extent. Trees located within the construction strip are not to be removed or damaged by the contractor.
- Contractor shall remove trees, stumps, and roots along line of excavation as directed by the Inspector. Payment for such removal shall be included in the unit price bid for excavation and backfill.
- Place regulation "Men Working" and warning signs as required to comply with Maryland State Highway Administration Manual of Traffic Control for Highway Construction and Maintenance Operations.
- All water mains to be D.I.P. unless otherwise noted.
- Top of all water mains to have a minimum of 3'-1/2' cover unless otherwise noted.
- Valves adjacent to tees shall be strapped to tees.
- Block all fittings with concrete.
- Bury line elevations on fire hydrants shall be set to the elevations shown on the drawings. All fire hydrants shall be strapped and buttressed with concrete in accordance with standard details. Soil around the fire hydrant to be compacted in accordance with Sections 1003 & 1008 of the Standard Specifications.
- All water house connections shall be for an inside meter setting.
- The contractor shall not operate any water main valves on the existing system.
- All sewer mains shall be C.S.P.X., V.C.P.X., P.V.C., or A.C.P. Class 2400 unless otherwise noted.
- The contractor shall provide a joint in all sewer mains within 2'-0" of exterior manhole wall.
- All manholes shall be 4'-0" inside diameter, unless otherwise noted.
- Water main and water house connection lines must have a minimum of one foot separation from the sanitary sewer and sewer house connections as they cross. Except at crossings, water and sewer lines shall have a minimum horizontal separation of 10'.
- For all Copper Water House Connections, utilize flared type fittings, only.
- Manholes designated thus: WT shall have Watertight Frames & Covers.

CONTRACT NO. 24-1504-D
DORSEY HALL
SECTION 2 AREA 2
HOWARD COUNTY, MARYLAND
DEPARTMENT OF PUBLIC WORKS

QUANTITIES			
ITEM	EST'D	AS-BUILT	MATERIAL / SUPPLIER
8"W	1275 LF	1251 LF	US PIPE & FOUNDRY CO
6"W	825 LF	927 LF	US PIPE & FOUNDRY CO
8"S	2313 LF	1650 LF	MUNICIPAL & CONTRACTOR SALES, INC
6"SHC	1213 LF	1090 LF	"
2"WHC	174 LF	136 LF	"
1"WHC	580 LF	841 LF	"
3/4"WHC	1110 LF	869 LF	"
FH	4 EA	4 EA	US PIPE & FOUNDRY CO
4'-0" DIA. MH	19 EA	19 EA	ATLANTIC PRECAST CORP. / B.C. UTILITY SUPPLY
8"V	3 EA	3 EA	US PIPE & FOUNDRY CO
6"V (EXCL. FH)	3 EA	3 EA	"
12"x8" T.S+V	1 EA	1 EA	"
8"DC TYPE "B"	2 EA	2 EA	MUNICIPAL & CONTR. SALES, INC.
1/2" DRAIN	1 EA	1 EA	MUNICIPAL & CONTR. SALES, INC.

Sediment Control Measures will be implemented in accordance with Article No. 15 of the Specifications B with Road Construction Plan F-86-219; Drawing , Sediment & Erosion Control.

REVIEWED FOR HOWARD SOIL CONSERVATION DISTRICT AND MEETS TECHNICAL REQUIREMENT.

James M. H. H. 7-24-86
SIGNATURE DATE

U.S. SOIL CONSERVATION SERVICE

This Development Plan is approved for Soil Erosion and Sediment Control by the Howard Soil Conservation District.

APPROVED:
Stephen L. Hark 7/24/86
HOWARD S.C.D. DATE

DEPARTMENT OF PUBLIC WORKS
HOWARD COUNTY, MARYLAND

John F. Nummy 8-1-86
DIRECTOR OF PUBLIC WORKS DATE

Robert L. Brunner 7-28-86
CHIEF, BUREAU OF UTILITIES DATE

William B. Reay 8-1-86
CHIEF, BUREAU OF ENGINEERING DATE

Mark A. ... 7-31-86
CHIEF, LAND DEVELOPMENT DIV. DATE

CFS CLARK - FINEPROCK & SACKETT
ENGINEERS - PLANNERS - SURVEYORS

11315 LOCKWOOD DRIVE SILVER SPRING, MARYLAND 20904
(301) 593-3400



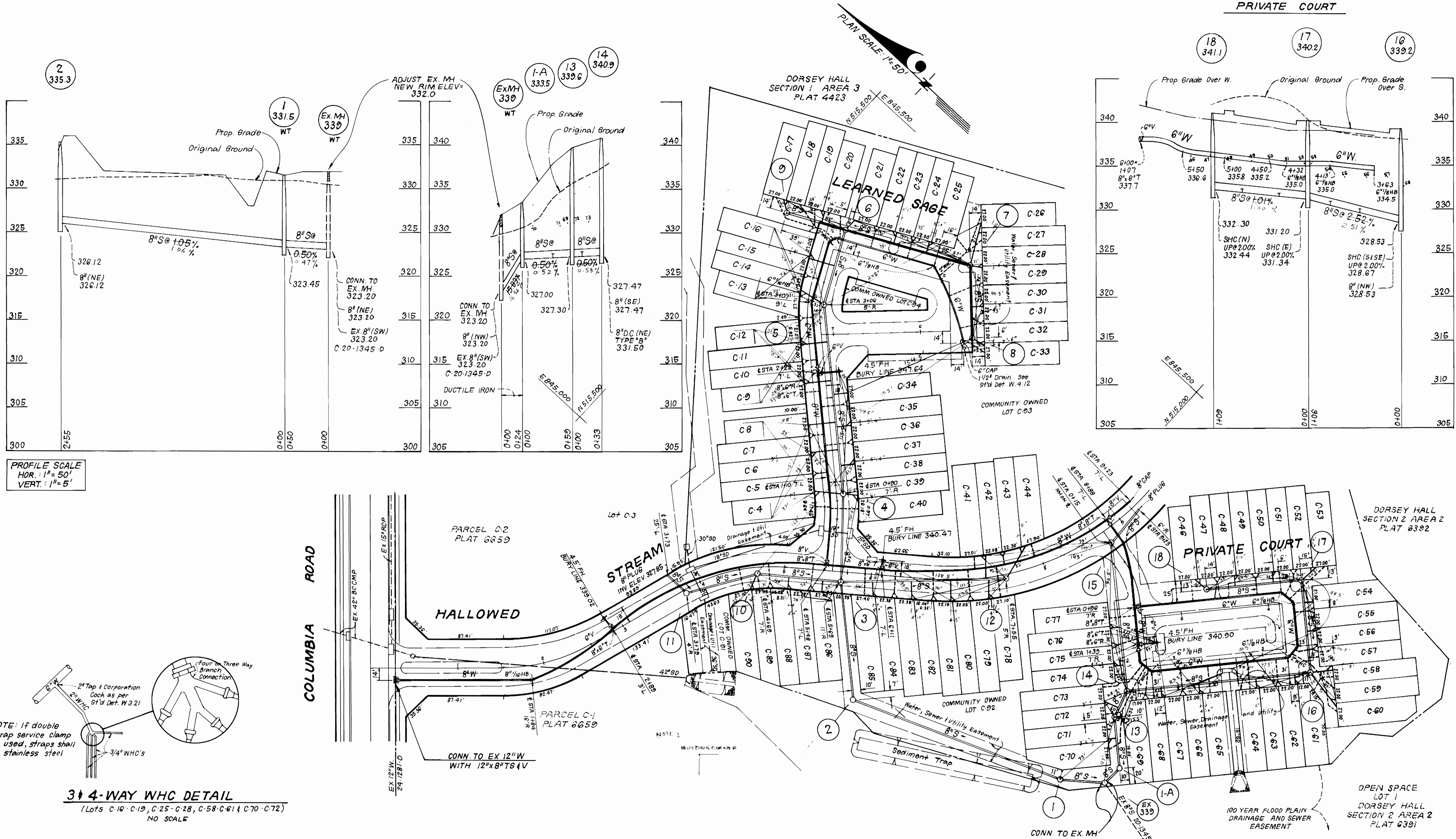
DES: CCM			
DRN: JTR			
CHK: CCM			
DATE: 6-12-86			
BY NO.		REVISION	DATE

TITLE SHEET

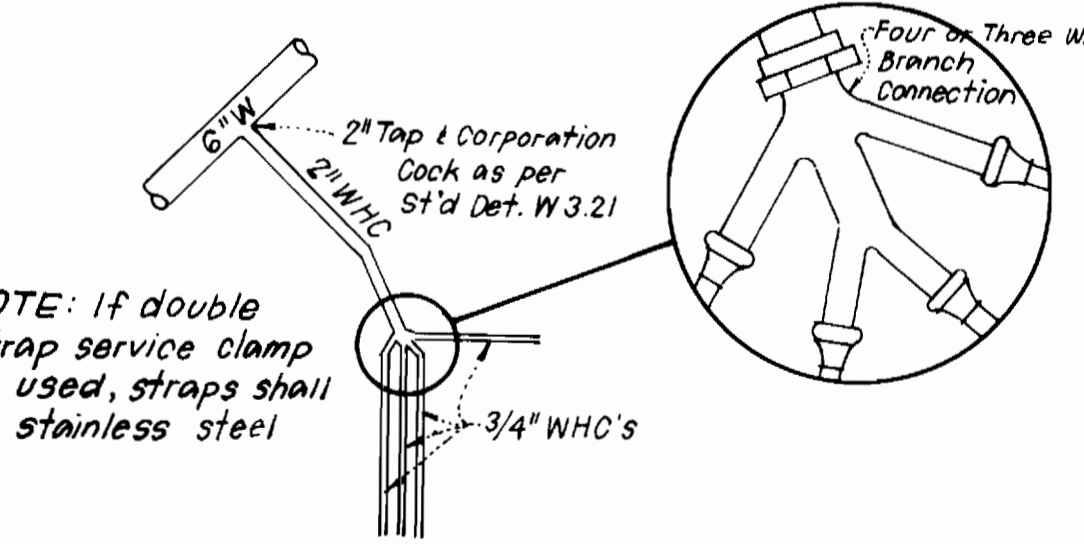
600' SCALE MAP NO. _____ BLOCK NO. _____

DORSEY HALL
SECTION 2 AREA 2
LOTS C-4 THRU C-44 AND C-46 THRU C-90
2ND ELECTION DISTRICT
CONTRACT NO. 24-1504-D

SCALE AS SHOWN
SHEET 1 OF 3



PROFILE SCALE
HOR.: 1" = 50'
VERT.: 1" = 5'



3 & 4-WAY WHC DETAIL
(Lots C-10-C-19, C-25-C-28, C-58-C-61 & C-70-C-72)
NO SCALE

DEPARTMENT OF PUBLIC WORKS
HOWARD COUNTY, MARYLAND

Director of Public Works: *[Signature]* 8-1-86
Date: 8-1-86

Chief, Bureau of Engineering: *[Signature]* 7-28-86
Date: 7-28-86

Chief, Bureau of Utilities: *[Signature]* 7-28-86
Date: 7-28-86

Chief, Land Development Div.: *[Signature]* 7-28-86
Date: 7-28-86

CFE CLARK-FINEPROCK & SACKETT
ENGINEERS-PLANNERS-SURVEYORS

11315 LOCKWOOD DRIVE SILVER SPRING, MARYLAND 20904
(301) 593-3400



DES: CCM			
DRN: JTR			
CHK: CCM			
DATE: 6-12-86			
BY NO.		REVISION	DATE

PLAN & PROFILES OF
WATER & SEWER MAINS

600' SCALE MAP NO. _____ BLOCK NO. _____

DORSEY HALL
SECTION 2 AREA 2
LOTS C-4 THRU C-44 AND C-46 THRU C-90
2ND ELECTION DISTRICT
CONTRACT NO. 24-1504-D

SCALE AS SHOWN
SHEET 2 of 3

