

VICINITY MAP
Scale: 1" = 600'

GENERAL NOTES

- APPROXIMATE LOCATION OF EXISTING MAINS ARE SHOWN. THE CONTRACTOR SHALL TAKE ALL NECESSARY PRECAUTIONS TO PROTECT EXISTING MAINS AND SERVICES AND MAINTAIN UNINTERRUPTED SUPPLY. ANY DAMAGE INCURRED SHALL BE REPAIRED IMMEDIATELY TO THE SATISFACTION OF THE ENGINEER AT THE CONTRACTOR'S EXPENSE.
- ALL HORIZONTAL CONTROLS ARE BASED ON MARYLAND STATE COORDINATES.
- ALL VERTICAL CONTROLS ARE BASED ON U.S.G.S. DATA.
- ALL PIPE ELEVATIONS ARE INVERT ELEVATIONS.
- CLEAR ALL UTILITIES BY A MINIMUM OF 6" AND FOR MATERIALS AND CONSTRUCTION METHODS, USE HOWARD COUNTY DESIGN MANUAL, VOLUME IV, STANDARD SPECIFICATIONS AND DETAILS FOR CONSTRUCTION. THE CONTRACTOR SHALL HAVE A COPY OF VOLUME IV ON THE JOB.
- WHERE TEST PITS HAVE BEEN MADE ON EXISTING UTILITIES, THEY ARE NOTED BY THE SYMBOL AT THE LOCATION OF THE TEST PIT. A NOTE OR NOTES CONTAINING THE RESULTS OF THE TEST PIT IS INCLUDED ON THE DRAWINGS. EXISTING UTILITIES IN THE VICINITY OF PROPOSED WORK FOR WHICH TEST PITS HAVE NOT BEEN DUG SHALL BE VERIFIED BY THE CONTRACTOR TO HIS OWN SATISFACTION. ANY DAMAGE TO EXISTING FACILITIES DUE TO THE CONTRACTOR'S NEGLIGENCE SHALL BE REPAIRED AT THE CONTRACTOR'S EXPENSE.
- CONTRACTOR SHALL NOTIFY THE FOLLOWING UTILITIES OR AGENCIES AT LEAST FIVE WORKING DAYS BEFORE STARTING WORK SHOWN ON THESE PLANS:
STATE HIGHWAY ADMINISTRATION 531-5533
BALTIMORE GAS AND ELECTRIC CO. CONTRACTOR SERVICES 561-2585
BALTIMORE GAS AND ELECTRIC CO. UNDERGROUND DAMAGE CONTROL 234-5621
BALTIMORE GAS AND ELECTRIC CO. TROUBLE SHOOTING 298-9013
MISS UTILITY 1-800-257-7777
COLONIAL PIPELINE CO. 795-1390
BUREAU OF UTILITIES, HOWARD COUNTY DEPARTMENT OF PUBLIC WORKS 992-2386
- TREES AND SHRUBS ARE TO BE PROTECTED FROM DAMAGE TO MAXIMUM EXTENT. TREES AND SHRUBS LOCATED WITHIN THE CONSTRUCTION STRIP ARE NOT TO BE REMOVED OR DAMAGED BY THE CONTRACTOR.
- CONTRACTOR SHALL REMOVE TREES, STUMPS AND ROOTS ALONG LINE OF EXCAVATION. PAYMENT OF SUCH REMOVAL SHALL BE INCLUDED IN THE UNIT PRICE BID FOR CONSTRUCTION OF THE MAIN.
- ALL WATER MAINS TO BE D.I.P. CLASS 52 UNLESS OTHERWISE NOTED.
- TOP OF ALL MAINS TO HAVE A MINIMUM OF 3 1/2" COVER UNLESS OTHERWISE NOTED.
- VALVES ADJACENT TO TEES SHALL BE STRAPPED TO TEES.
- ALL FITTINGS SHALL BE BUTTRESSED OR ANCHORED WITH CONCRETE IN ACCORDANCE WITH THE STANDARD DETAILS UNLESS OTHERWISE PROVIDED FOR ON THE DRAWINGS.
- FIRE HYDRANTS SHALL BE SET TO THE BURY LINE ELEVATIONS SHOWN ON THE DRAWINGS. ALL FIRE HYDRANTS SHALL BE STRAPPED AND BUTTRESSED WITH CONCRETE IN ACCORDANCE WITH STANDARD DETAILS. SOIL AROUND THE FIRE HYDRANT TO BE COMPACTED IN ACCORDANCE WITH SECTION 1003 OF THE STANDARD SPECIFICATIONS.
- THE CONTRACTOR SHALL NOT OPERATE ANY WATER MAIN VALVES ON THE EXISTING SYSTEM.
- ALL WATER HOUSE CONNECTIONS SHALL BE FOR INSIDE METER SETTING, UNLESS OTHERWISE NOTED ON PLANS OR IN SPECIFICATIONS.
- ALL SEWER MAINS SHALL BE C.S.P.X., R.C.S.P., V.C.P.X., A.C.P. CLASS 2400 OR P.V.C. UNLESS OTHERWISE NOTED.
- THE CONTRACTOR SHALL PROVIDE A JOINT IN ALL SEWER MAINS WITH 2'-0" OF EXTERIOR MANHOLE WALL.
- ALL MANHOLES SHALL BE 4'-0" INSIDE DIAMETER UNLESS OTHERWISE NOTED.
- FORCE MAINS SHALL BE D.I.P. ONLY.
- MANHOLES SHOWN WITH 12" AND 18" WALLS ARE FOR BRICK MANHOLES ONLY.
- MANHOLES DESIGNATED W.T. IN PLAN AND PROFILE SHALL HAVE WATERTIGHT FRAMES AND COVERS, STANDARD DETAIL 65.52. WHERE WATERTIGHT MANHOLE FRAMES AND COVERS ARE USED, SET TOP OF FRAME 1'-6" ABOVE FINISHED GRADE UNLESS OTHERWISE NOTED ON THE DRAWINGS.
- HOUSE(S) WITH THE SYMBOL "C.N.S." INDICATES THE CELLAR CAN NOT BE SERVED.
- ALL D.I.P. FITTINGS SHALL BE IN ACCORDANCE WITH A.W.W.A. SPECIFICATION C-153 DUCTILE IRON COMPACT FITTINGS, 5" THROUGH 12" FOR WATER AND OTHER LIQUIDS.

BENCH MARKS

- Ho Co Sta 2343001 Elev 288.241
3/4" x 3/4" x 3/4" Below Surface of Ground in the Northeast Graded Island of Route #106 and Route #175
- Ho Co Monument 2443001 Elev 291.400
6" x 6" Concrete Monument 9x12" Below Surface of Ground in the Northwest Corner of the Intersection of Route #106 and Lark Brown Road.

Note: 3" blowoff is to be centered on common property line of lots 18 and 19

6" x 4" TEE STA 2155+0+00
4" VALVE STA 0+02
4" x 3" REDUCE STA 0+27
8" BLOW OFF STA 0+30

PROPERTY OF FRANK RUFF
119.0 - 607

6" PLUG STA 2+62

RELOCATION OF EXISTING 12" WATER IS TO BE INCLUDED IN THIS CONTRACT FOR PROFILE SEE SHEET 2 OF 2

Build Manhole No. 1 Over Existing 8" Sewer and Connect to Ex 5'S

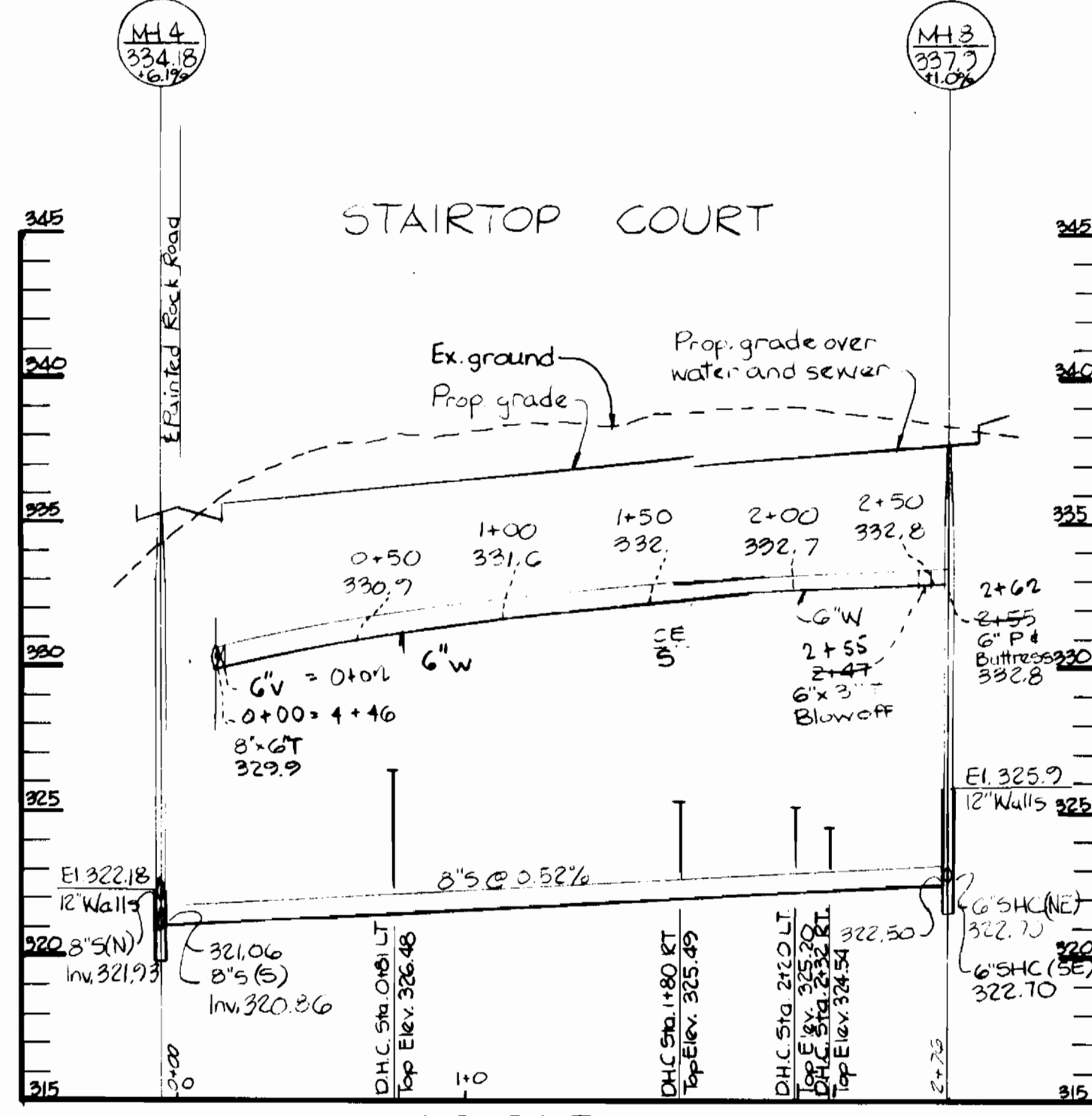
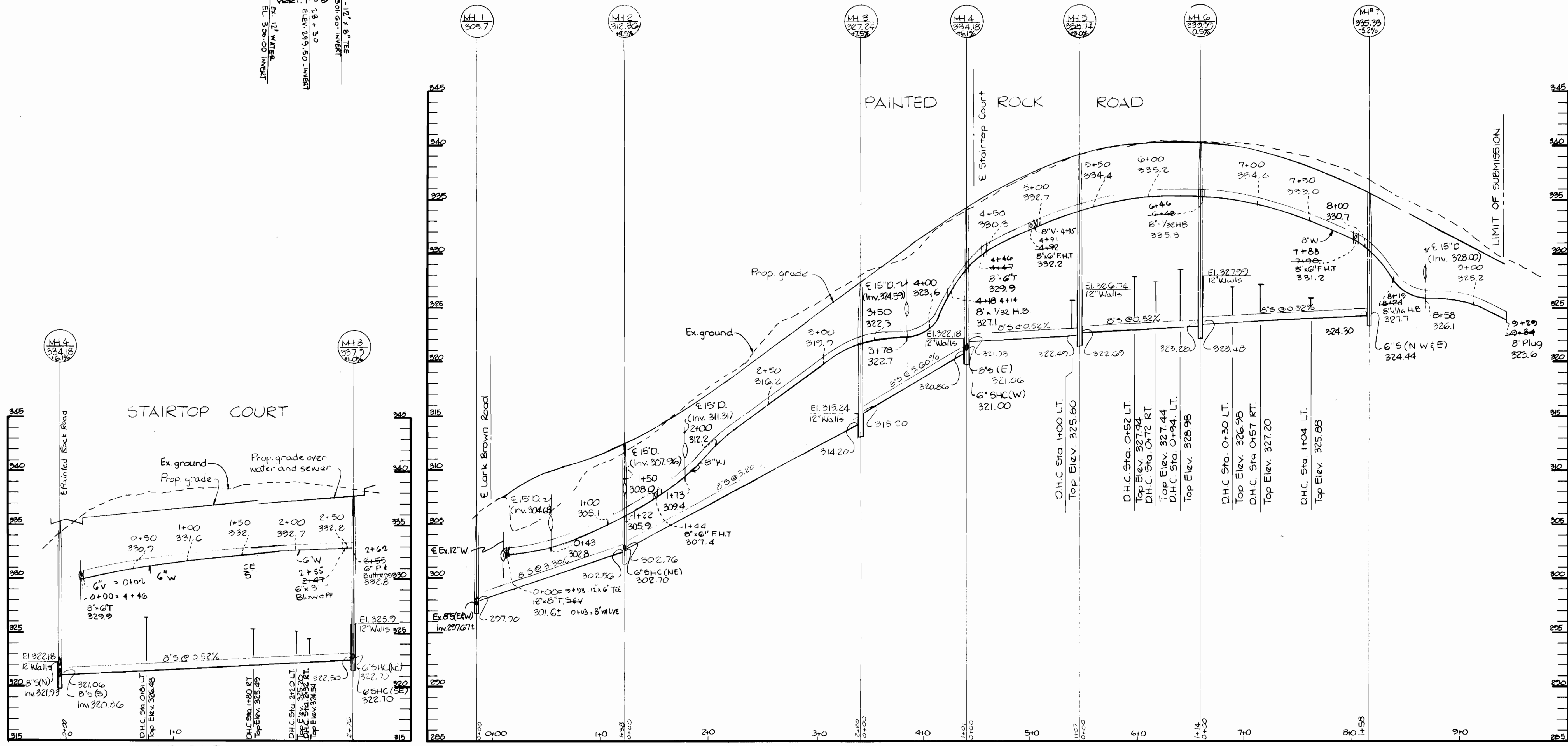
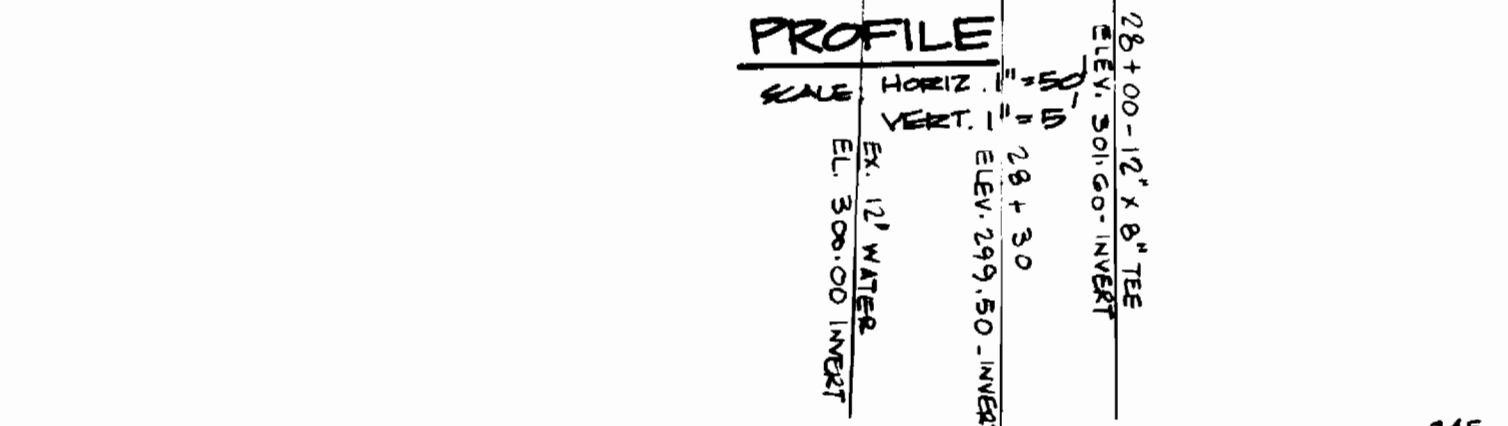
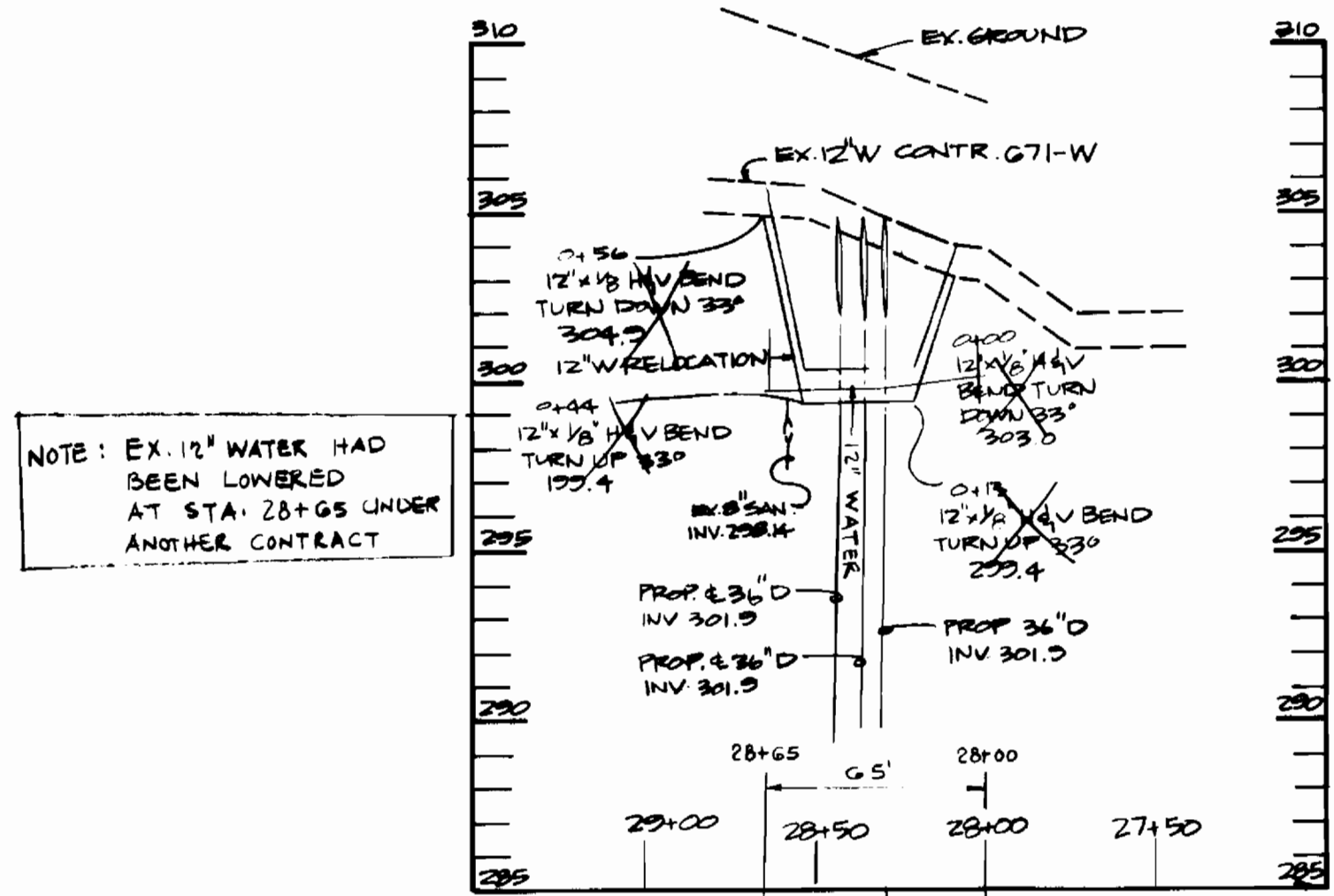
Sediment control measures for this contract will be implemented in accordance with Article 15 of the Specifications (F-88-19)

Howard Soil Conservation District:
Revised for Howard Soil Conservation District and meets technical requirements.
John M. Hahn 12-16-88
Soil Conservation Service
This plan is approved for soil erosion and sediment control by the Howard Soil Conservation District.
Stephen L. Palmer 12/14/88
Howard Soil Conservation District

WATER/SANITARY AS-BUILTS			
ITEM	QUANTITIES		
	ESTIMATED	AS BUILT	MATERIALS SUPPLIED
12" Water	56 L.F.	65-F	MC WANE PIPE
6" Water	949 L.F.	322-L.F.	MC WANE PIPE
6" Water	280 L.F.	312-L.F.	MC WANE PIPE
6" Valve	1 Ea.	2 Ea.	MUELLER CO
Fire Hydrants & Valves	3 Ea.	3 Ea.	MUELLER CO
6" Sewer	1114 L.F.	1082-L.F.	EXTENSION TECHNOLOGIES
Manholes	650 V.F.	652 A.	ATLANTIC PIPE CAST
6" SHC	675 L.F.	674-L.F.	EXTENSION TECHNOLOGIES
1" WHC	320 L.F.	270-L.F.	VINCENT BRASS/HALESTAR
3/4" WHC	220 L.F.	382-L.F.	"
3" Blowoff	1 Ea.	1 Ea.	MUELLER CO
12" x 8" T.S. #V.	1 Ea.	0 Ea.	"
6" Stand Pipe	41 V.F.	41 V.F.	EXTENSION TECHNOLOGIES
6" Valves	1 Ea.	1 Ea.	MUELLER CO

DEPARTMENT OF PUBLIC WORKS HOWARD COUNTY, MARYLAND <i>James J. Lewis</i> 12-13-88 DIRECTOR OF PUBLIC WORKS <i>Robert W. Berman</i> 12-13-88 CHIEF, BUREAU OF UTILITIES		THE RIEMER GROUP, INC. 3105 NORTH RIDGE ROAD ELLICOTT CITY, MARYLAND ARTHUR E. MUEGGE 2067		DES: DAM DRN: JHB III CHK: DATE:	PLAN OF WATER AND SEWER MAINS	600' SCALE MAP NO. 37 BLOCK NO.	PAINTER'S HILL SECTION ONE 6TH ELECTION DISTRICT HOWARD COUNTY, MARYLAND CONTRACT NO. 24-1497-D	SCALE AS SHOWN SHEET 1 OF 2
---	--	---	--	---	----------------------------------	------------------------------------	---	--------------------------------

LARK BROWN ROAD



PROFILE
Scale: Horiz. 1"=50'
Vert. 1"=5'

DEPARTMENT OF PUBLIC WORKS
HOWARD COUNTY, MARYLAND

James J. [Signature] 12/16/88
DIRECTOR OF PUBLIC WORKS DATE

Ruth [Signature] 12-17-88
CHIEF, BUREAU OF UTILITIES

THE RIEMER GROUP, INC.
3105 NORTH RIDGE ROAD
ELLCOTT CITY, MARYLAND

[Signature] 12/16/88
CHIEF, LAND DEVELOPMENT DIVISION



DES: DAM	MGY: 1	AT MH 4 8"X6" T WAS 8"X8" T f 329.9 WAS 329.1 12/21/88
DRN: DAM		
CHK:		
DATE:	BY NO.	REVISION

PROFILES OF
WATER AND SEWER MAINS

600' SCALE MAP NO. 37 BLOCK NO.

PAINTER'S HILL
SECTION ONE
6TH ELECTION DISTRICT
HOWARD COUNTY, MARYLAND
CONTRACT NO. 24-1497-D

SCALE
AS
SHOWN

SHEET
2 OF 2

AS-BUILT August 31 1989
SEPT 1 1989

JULY 29, 1987