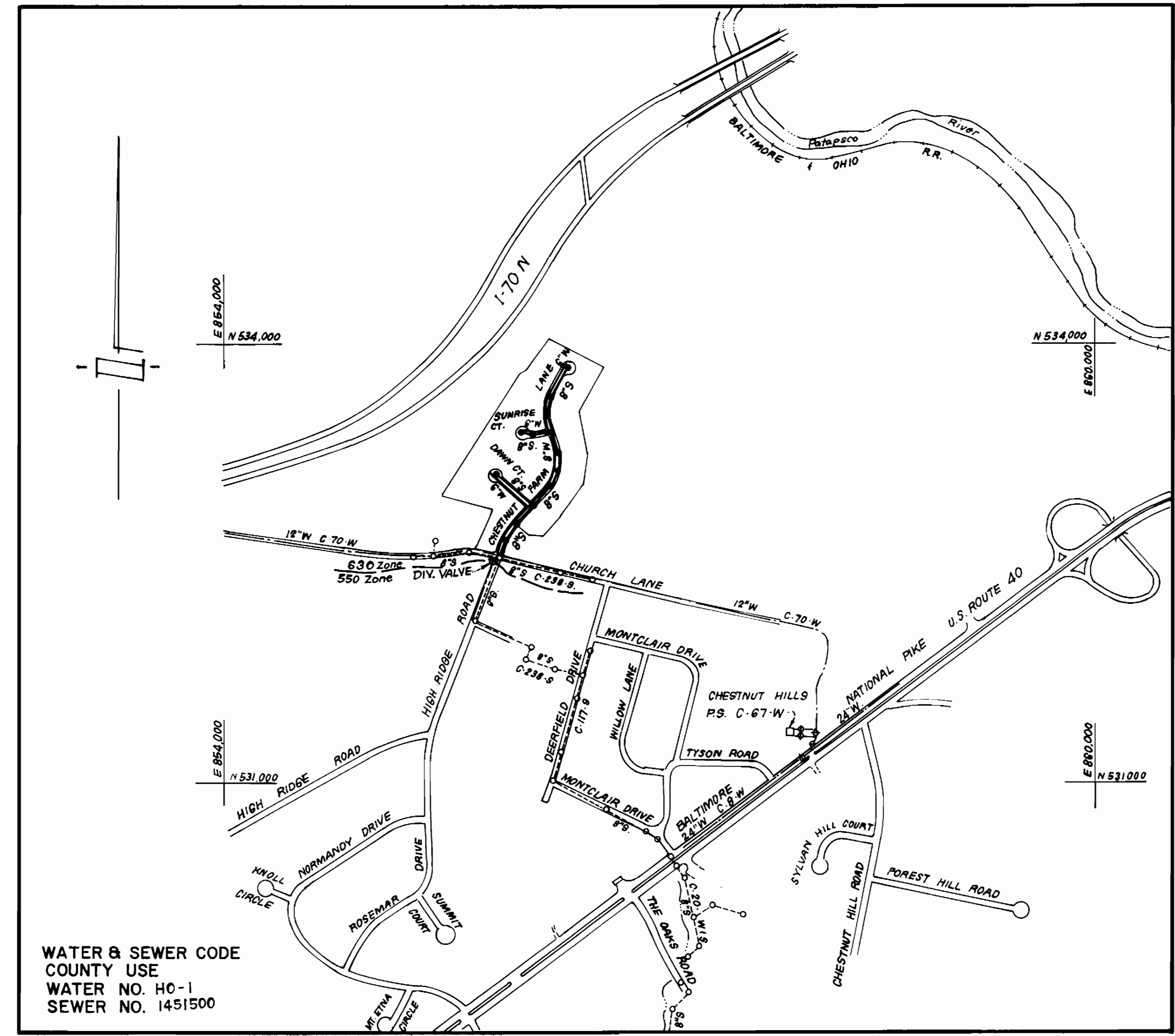


TYPE OF BUILDING	Single Family
NUMBER OF UNITS	47
NUMBER OF SHC'S	47
NUMBER OF WHC'S	47
DRAINAGE AREA	Potapasco



WATER & SEWER CODE
 COUNTY USE
 WATER NO. HO-1
 SEWER NO. 1451500

VICINITY MAP

GENERAL NOTES

- Approximate location of existing mains are shown. The contractor shall take all necessary precautions to protect existing mains and services and maintain uninterrupted supply. Any damage incurred shall be repaired immediately to the satisfaction of the Inspector, at the contractor's expense.
- All horizontal controls are based on Maryland State Coordinates.
- All vertical controls are based on U.S.G.S. Datum.
- All pipe elevations shown are invert elevations.
- Clear all utilities by a minimum of 6" clear all poles by 2'-0" minimum or tunnel as required. Any cost incurred to the contractor for tunneling or bracing at poles shall be included in unit prices bid for excavation and backfill.
- For details not shown on the drawings use Howard County Standard Details.
- For materials and construction methods use Howard County Standard Specifications & Ho. Co. Design Manual, Volume II. The Contractor shall have a copy of Volume II on the job.
- Contractor shall locate existing utilities a minimum of two (2) weeks in advance of construction operations in the vicinity of proposed utilities at his own expense.
- Contractor shall notify the following utilities or agencies at least five (5) working days before starting work shown on these plans.
 State Highway Administration - 531-5533
 Baltimore Gas & Electric Company - Contractor Services 561-2585
 Baltimore Gas & Electric Company - Underground Damage Control 234 5621
 Baltimore Gas & Electric Company - Trouble Shooting 298 0013
 "Miss Utility" - 1-559-0100
 Chesapeake & Potomac (C & P) Telephone Company - 725-9976
 Colonial Pipeline Company - 795-1300
 Bureau of Utilities Howard County - 992-2366
- Trees are to be protected from damage to maximum extent. Trees located within the construction strip are not to be removed or damaged by the contractor.
- Contractor shall remove trees, stumps, and roots along line of excavation as directed by the Inspector. Payment for such removal shall be included in the unit price bid for excavation and backfill.
- Place regulation "Men Working" and warning signs as required to comply with Maryland State Highway Administration Manual of Traffic Control for Highway Construction and Maintenance Operations.
- All water mains to be D.I.P. unless otherwise noted.
- Top of all water mains to have a minimum of 3'-1/2' cover unless otherwise noted.
- Valves adjacent to tees shall be strapped to tees.
- Block all fittings with concrete.
- Bury line elevations on fire hydrants shall be set to the elevations shown on the drawings. All fire hydrants shall be strapped and buttressed with concrete in accordance with standard details. Soil around the fire hydrant to be compacted in accordance with Sections 10.03 & 10.08 of the Standard Specifications.
- All water house connections shall be for an inside meter setting.
- The contractor shall not operate any water main valves on the existing system.
- All sewer mains shall be C.S.P.X., V.C.P.X., P.V.C., or A.C.P. Class 2400 unless otherwise noted.
- The contractor shall provide a joint in all sewer mains within 2'-0" of exterior manhole wall.
- All manholes shall be 4'-0" inside diameter, unless otherwise noted.
- Water main and water house connection lines must have a minimum of one foot separation from the sanitary sewer and sewer house connections as they cross. Except at crossings, water and sewer lines shall have a minimum horizontal separation of 10'.
- For all Copper Water House Connections, utilize flared type fittings only.

CONTRACT NO. 14-1486 D W&S

CHESTNUT FARMS
 SECTION I AREA I
 HOWARD COUNTY, MARYLAND
 DEPARTMENT OF PUBLIC WORKS

QUANTITIES			
ITEM	EST 'MD	AS-BUILT	MATERIAL / SUPPLIER
8" S	2,200 LF	2,199	A+P WATER & SEWER SUPPLIES, INC.
4' MH	13 EA	13	ATLANTIC PRECAST CONCRETE CORP.
8" W	1,425 LF	1,425	A+P WATER & SEWER SUPPLIES, INC.
6" W	756 LF	756	" "
FH	4 EA	4	" "
8" V	3 EA	3	" "
6" SHC	1,008 LF	1,048	" "
1" WHC	427 LF	547	" "
3/4" WHC	615 LF	584	" "
12"x8" TS IV	1 EA	1	" "
14" DRAIN	3 EA	3	" "

Sediment Control Measures will be implemented in accordance with Article No. 15 of the Specifications & with Road Construction Plan F-56-109; Drawing , Sediment & Erosion Control.

REVIEWED FOR HOWARD SOIL CONSERVATION DISTRICT AND MEETS TECHNICAL REQUIREMENT.
John M. Klein 6-25-86
 SIGNATURE DATE
 U.S. SOIL CONSERVATION SERVICE

This Development Plan is approved for Soil Erosion and Sediment Control by the Howard Soil Conservation District.

APPROVED:
Stephen S. Paul 6/25/86
 HOWARD S.C.D. DATE

CHESTNUT FARMS
 SECTION I AREA I
 LOTS 1-48

DEPARTMENT OF PUBLIC WORKS
 HOWARD COUNTY, MARYLAND

James J. Wood 6/27/86
 DIRECTOR OF PUBLIC WORKS DATE

Robert J. Wood 6/27/86
 CHIEF, BUREAU OF UTILITIES DATE

William L. F. 6-27-86
 CHIEF, LAND DEVELOPMENT DIV. DATE

CF CLARK · FINEFROCK & SACKETT
 ENGINEERS · PLANNERS · SURVEYORS

11315 LOCKWOOD DRIVE SILVER SPRING, MARYLAND 20904
 (301) 593-3400



DES:	WH	△	Changed Cont. # From 24-1486 To 14-1486	7/8/86
DRN:				
CHK:				
DATE:	BY	NO.	REVISION	DATE

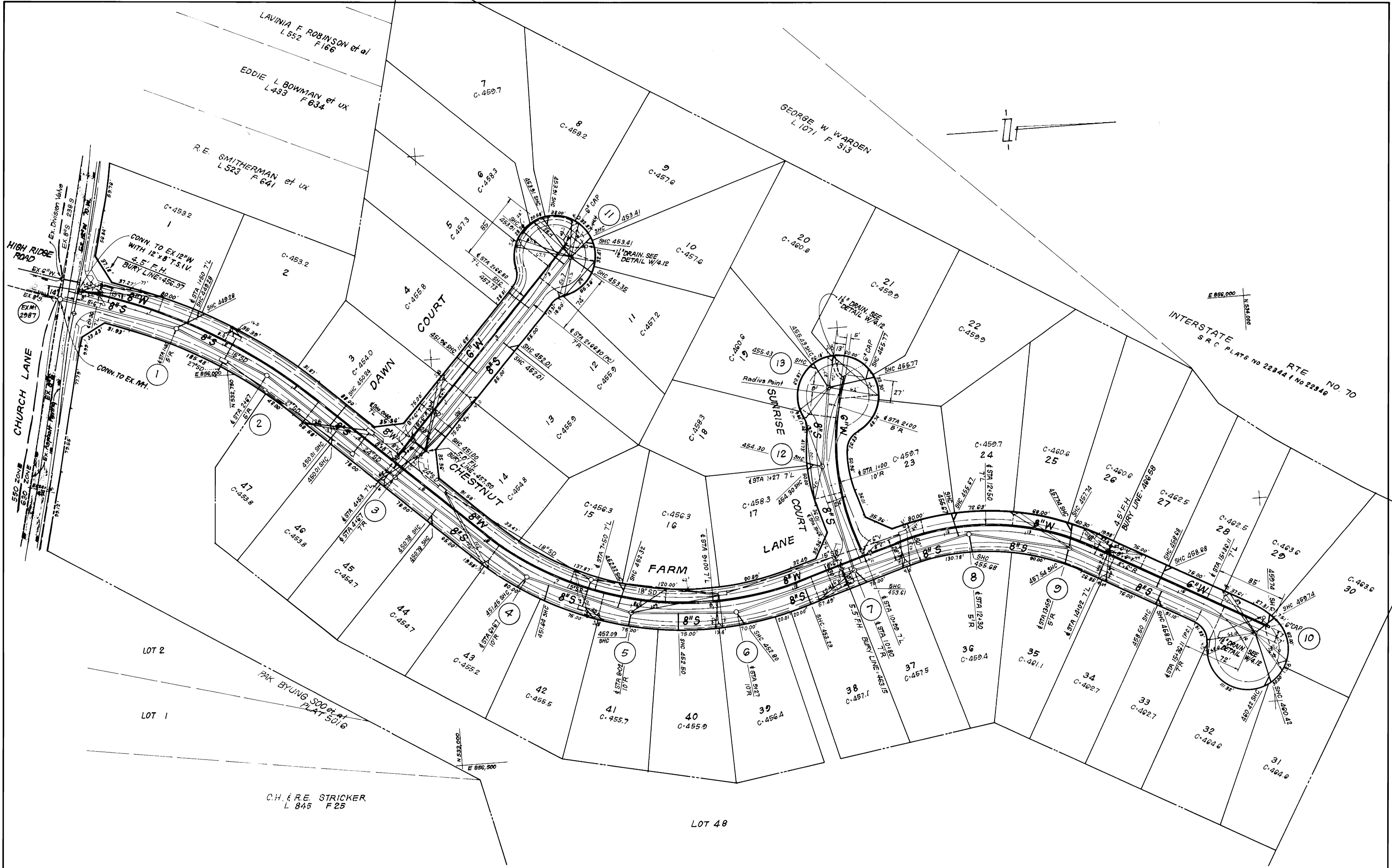
TITLE SHEET

600' SCALE MAP NO. _____ BLOCK NO. _____

CHESTNUT FARMS
 SECTION I AREA I
 2ND ELECTION DISTRICT
 CONTRACT NO. 14-1486-D

SCALE
 1" = 600'

SHEET
 1 OF 3



DEPARTMENT OF PUBLIC WORKS
 HOWARD COUNTY, MARYLAND

James H. Lane
 DIRECTOR OF PUBLIC WORKS
 DATE

Robert W. Wood
 CHIEF, BUREAU OF UTILITIES
 DATE

CFB CLARK · FINEFROCK & SACKETT
 ENGINEERS · PLANNERS · SURVEYORS

11315 LOCKWOOD DRIVE SILVER SPRING, MARYLAND 20904
 (301) 593-3400



DES:	
DRN:	
CHK:	
DATE:	
BY NO.	REVISION
DATE	

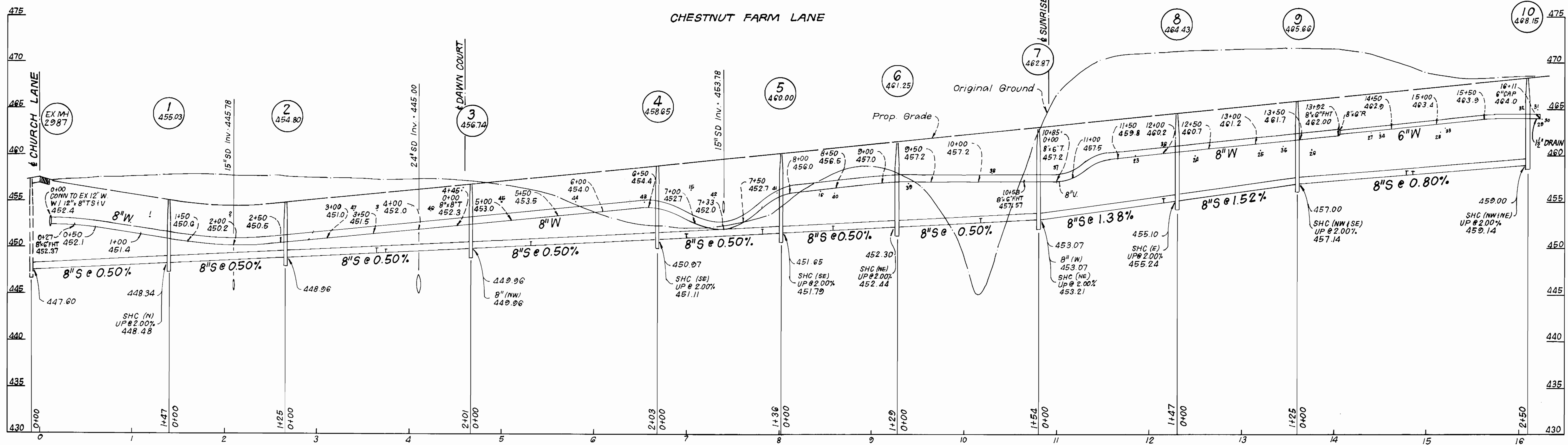
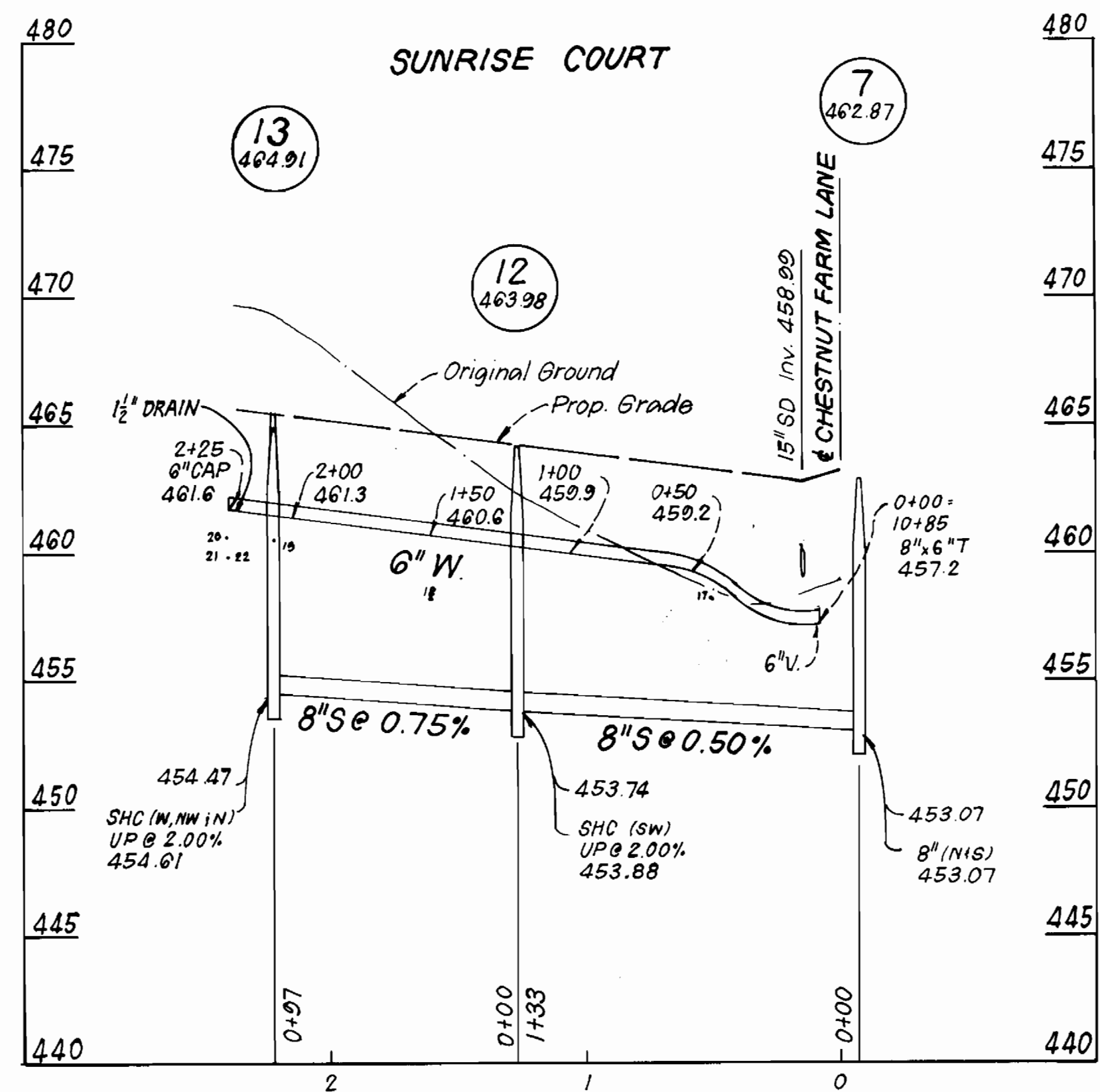
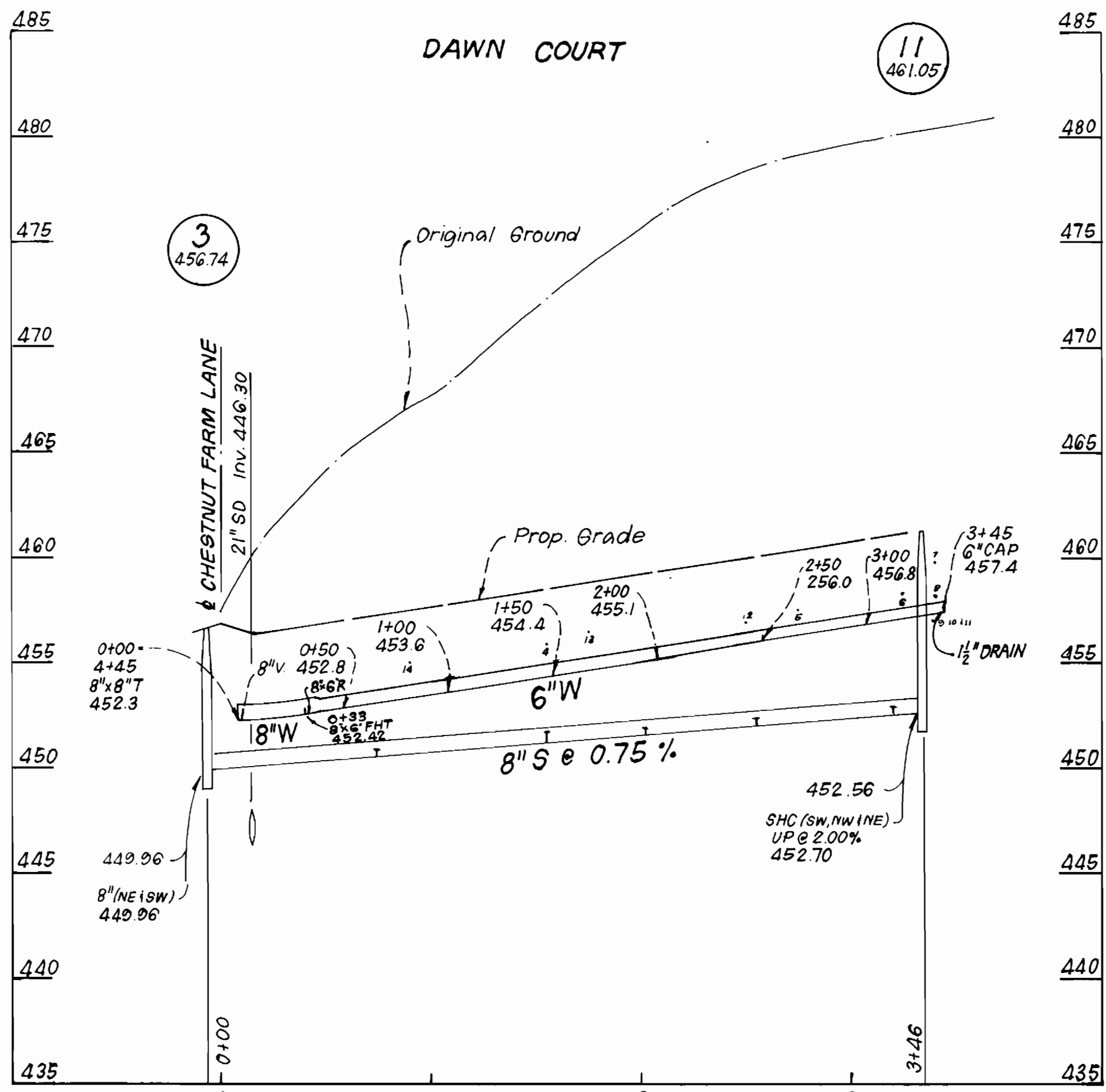
PLAN OF
 WATER & SEWER MAINS

60' SCALE MAP NO. _____ BLOCK NO. _____

CHESTNUT FARMS
 SECTION I AREA I
 2ND ELECTION DISTRICT
 CONTRACT NO. 14-1486-D

SCALE
 1"=50'

SHEET
 2 OF 3



DEPARTMENT OF PUBLIC WORKS
HOWARD COUNTY, MARYLAND

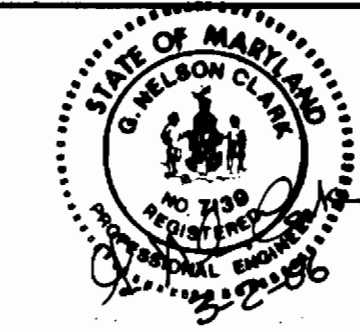
[Signature] 4/27/86
DIRECTOR OF PUBLIC WORKS

[Signature] 4-27-86
CHIEF, BUREAU OF ENGINEERING

[Signature] 4-27-86
CHIEF, LAND DEVELOPMENT DIV.

CFE CLARK · FINEPROCK & SACKETT
ENGINEERS · PLANNERS · SURVEYORS

11315 LOCKWOOD DRIVE SILVER SPRING, MARYLAND 20904
(301) 593-3400



DES:	
DRN:	
CHK:	
DATE:	
BY NO.	
REVISION	
DATE	

PROFILES OF
WATER & SEWER MAINS

600' SCALE MAP NO. _____ BLOCK NO. _____

CHESTNUT FARMS
SECTION I AREA I
2ND ELECTION DISTRICT
CONTRACT NO. 14-1486-D

SCALE:
H: 1" = 50'
V: 1" = 5'

SHEET
3 of 3