

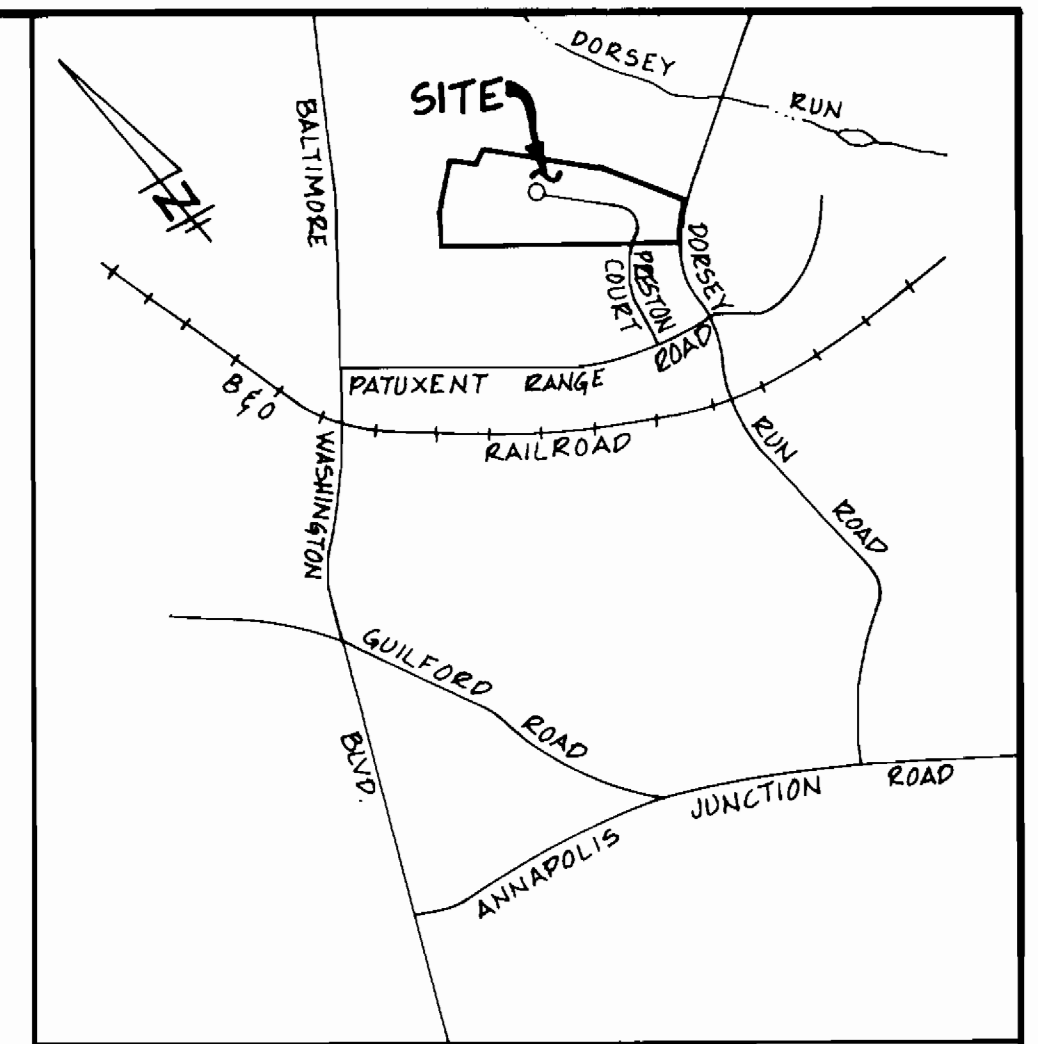
BALTIMORE WASHINGTON INDUSTRIAL PARK - SEC. II

DEPARTMENT OF PUBLIC WORKS

6th. ELECTION DISTRICT

HOWARD COUNTY, MARYLAND

CONTRACT NO. 24-1485-D



VICINITY MAP
SCALE: 1"=2000'

P&J BM #4
R.R. SPIKE SET IN CIP 26, 4'E 263656, S. SIDE
DORSEY RUN ROAD. ELEV. 211.740

P&J BM #7
R.R. SPIKE SET IN 4'E POLE 263650, S. SIDE
DORSEY RUN ROAD. ELEV. 177.244

GENERAL NOTES:

PART I

- APPROXIMATE LOCATION OF EXISTING MAINS ARE SHOWN. THE CONTRACTOR SHALL TAKE ALL NECESSARY PRECAUTIONS TO PROTECT EXISTING MAINS AND SERVICES AND MAINTAIN UNINTERRUPTED SUPPLY. ANY DAMAGE INCURRED SHALL BE REPAIRED IMMEDIATELY TO THE SATISFACTION OF THE ENGINEER, AT THE CONTRACTOR'S EXPENSE.
- ALL HORIZONTAL CONTROLS ARE BASED ON MARYLAND STATE COORDINATES.
- ALL VERTICAL CONTROLS ARE BASED ON U.S.G.S. DATUM.
- ALL PIPE ELEVATIONS SHOWN ARE INVERT ELEVATIONS.
- CLEAR ALL UTILITIES BY A MINIMUM OF 6". CLEAR ALL POLES BY 2'-0" MIN. OR TUNNEL AS REQUIRED. ANY COST INCURRED TO THE CONTRACTOR FOR TUNNELING OR BRACING AT POLES SHALL BE INCLUDED IN UNIT PRICES BID FOR CONSTRUCTION OF MAINS.
- FOR DETAILS NOT SHOWN ON DRAWINGS USE HOWARD COUNTY STANDARD DETAILS.
- FOR MATERIALS AND CONSTRUCTION METHODS USE HOWARD COUNTY STANDARD SPECIFICATIONS.
- CONTRACTOR SHALL LOCATE EXISTING UTILITIES A MINIMUM OF TWO (2) WEEKS IN ADVANCE OF CONSTRUCTION OPERATIONS IN THE VICINITY OF PROPOSED UTILITIES AT HIS OWN EXPENSE.
- CONTRACTOR SHALL NOTIFY THE FOLLOWING UTILITIES OR AGENCIES AT LEAST FIVE (5) WORKING DAYS BEFORE STARTING WORK SHOWN ON THESE PLANS:
 - STATE HIGHWAY ADMINISTRATION: 531-5533
 - BALTIMORE GAS AND ELECTRIC CO. - UNDERGROUND ELECTRIC DISTRIBUTION (CUSTOMER SERVICE): 685-0123
 - BALTIMORE GAS AND ELECTRIC CO. - UNDERGROUND GAS DISTRIBUTION (CUSTOMER SERVICE): 685-0123
 - ENGINEERING "DAMAGE CONTROL": 234-5621
 - "MISS UTILITY": 559-0100
 - CHESAPEAKE AND POTOMAC (C & P) TELEPHONE COMPANY: 725-9976
 - AMERICAN TELEPHONE AND TELEGRAPH - CABLE LOCATION DIV.: 393-3553
 - COLONIAL PIPELINE COMPANY: 795-1390
 - BUREAU OF UTILITIES HOWARD COUNTY: 992-2366

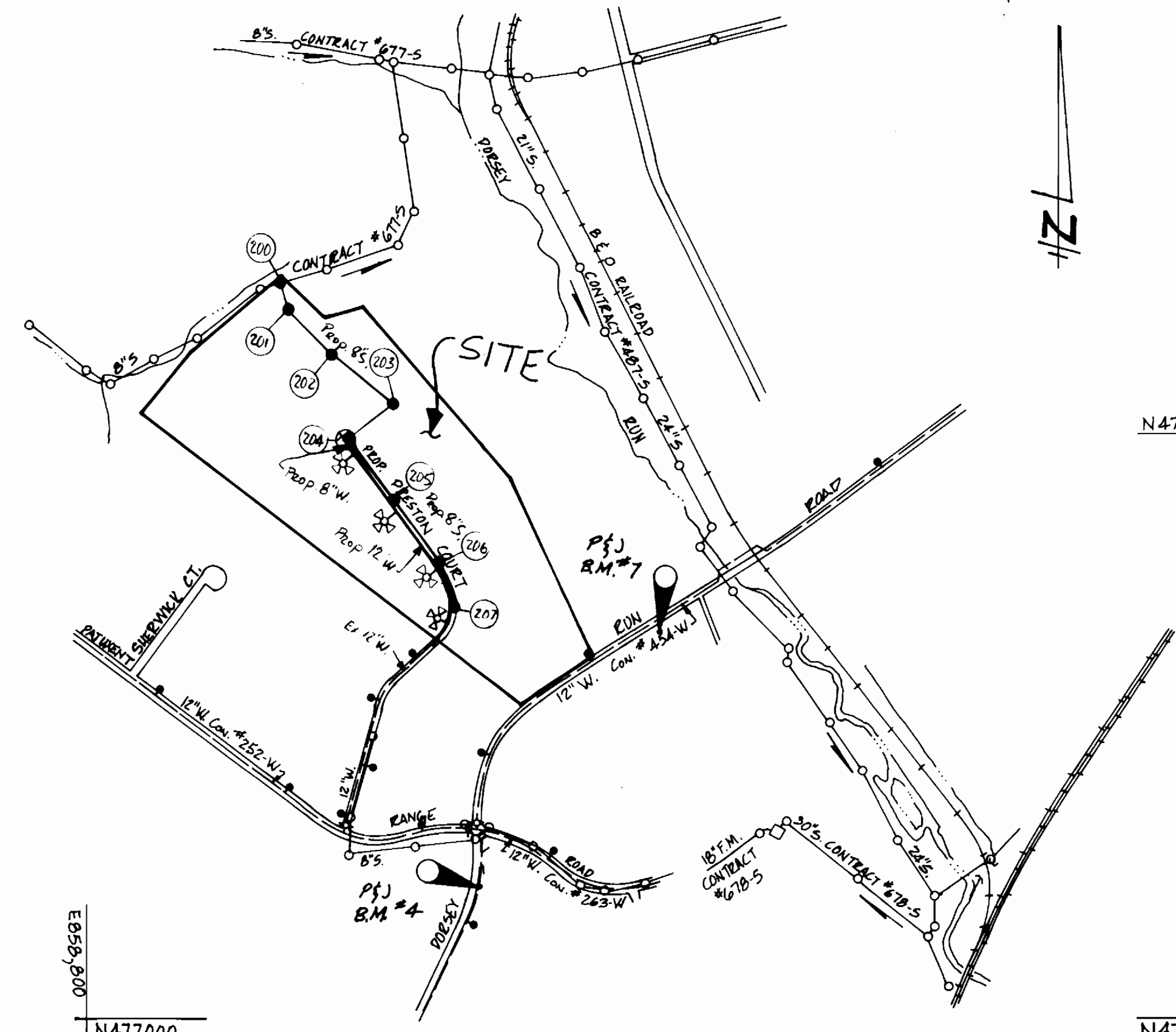
- TREES ARE TO BE PROTECTED FROM DAMAGE TO MAXIMUM EXTENT. TREES LOCATED WITHIN THE CONSTRUCTION STRIP ARE NOT TO BE REMOVED OR DAMAGED BY THE CONTRACTOR.
- CONTRACTOR SHALL REMOVE TREES, STUMPS AND ROOTS ALONG LINE OF EXCAVATION AS DIRECTED BY THE ENGINEER. PAYMENT FOR SUCH REMOVAL SHALL BE INCLUDED IN THE UNIT PRICE BID FOR EXCAVATION AND BACKFILL.
- PLACE REGULATION "MEN WORKING" AND WARNING SIGNS AS REQUIRED TO COMPLY WITH MARYLAND STATE HIGHWAY ADMINISTRATION MANUAL OF TRAFFIC CONTROL FOR HIGHWAY CONSTRUCTION AND MAINTENANCE OPERATIONS.

PART II

- ALL WATER MAINS TO BE C.I.P. OR D.I.P. UNLESS OTHERWISE NOTED.
- TOP OF ALL WATER MAINS TO HAVE A MINIMUM OF 3/2" COVER UNLESS OTHERWISE NOTED.
- VALVES ADJACENT TO TEES SHALL BE STRAPPED TO TEES.
- BLOCK ALL FITTINGS WITH CONCRETE.
- BURY LINE ELEVATIONS ON FIRE HYDRANTS SHALL BE SET TO THE ELEVATIONS SHOWN ON THE DRAWINGS. ALL FIRE HYDRANTS SHALL BE STRAPPED AND BUTTRESSED WITH CONCRETE IN ACCORDANCE WITH STANDARD DETAILS. SOIL AROUND THE FIRE HYDRANT TO BE COMPACTED IN ACCORDANCE WITH SECT. 1003 & 1008 OF THE STANDARD SPECIFICATIONS.
- THE CONTRACTOR SHALL NOT OPERATE ANY WATER MAIN VALVES ON THE EXISTING SYSTEM.

PART III

- ALL SEWER MAINS SHALL BE C.S.P.X., R.C.S.P., V.C.P.X., A.C.P. CLASS 2400 OR P.V.C. UNLESS OTHERWISE NOTED.
- THE CONTRACTOR SHALL PROVIDE A JOINT IN ALL SEWER MAINS WITHIN 2'-0" OF EXTERIOR MANHOLE WALL.
- ALL MANHOLES SHALL BE 4'-0" INSIDE DIAMETER UNLESS OTHERWISE NOTED.
- MANHOLES SHOWN WITH 12" AND 16" WALLS ARE BRICK MANHOLES ONLY.
- MANHOLES DESIGNATED W.T. IN PLAN AND PROFILE SHALL HAVE WATERTIGHT FRAME AND COVERS, STANDARD DETAIL G-5.52. WHERE WATERTIGHT MANHOLE FRAME AND COVER IS USED, SET TOP OF FRAME 1'-6" ABOVE FINISHED GRADE UNLESS OTHERWISE NOTED ON THE DRAWINGS.



LOCATION PLAN
SCALE: 1"=600'

INDEX OF SHEETS

SHEET NO.	DESCRIPTION
1	TITLE SHEET
2	8" SANITARY SEWER - PLAN & PROFILE
3	WATER & SEWER - PLAN & PROFILE

TYPE OF BUILDING:	WAREHOUSING
NO. OF LOTS	4
NUMBER OF WATER HOUSE CONN.	9
NUMBER OF SEWER HOUSE CONN.	7
DRAINAGE AREA	DORSEY RUN
WATER & SEWER CODE	
SEWER CODE	SD2 DDDO
WATER CODE	B 02

QUANTITIES				
ITEM	UNIT	ESTIMATED	AS-BUILT	MATERIAL-SUPPLIER
12" VALVE	EACH	1	1	US PIPE & SUPPLIES
12" D.I.P.	L.F.	1205	1205	CL 52, GRIFFIN PIPE
8" D.I.P.	L.F.	345	345	" "
6" D.I.P.	L.F.	146	146	" "
12" x 8" REDUCER	EACH	1	1	GRIFFIN PIPE PRODUCTS
12" x 8" TEE	EACH	2	3	CLASS 250, GRIFFIN
12" x 6" TEE	EACH	6	5	" "
12" x 8" CROSS	EACH	1	1	" "
8" x 8" CROSS	EACH	1	1	" "
8" VALVE	EACH	7	8	US PIPE & FOUNDRY
6" VALVE	EACH	6	5	" "
6" FIRE HYDRANT	EACH	4	4	" "
6" CAP	EACH	7	7	" "
6" CAP	EACH	2	2	" "
8" SAN. SEWER	L.F.	2058	2058	SDR 35, NAT'L PIPE CO.
6" SAN. SEWER	L.F.	150	179	" "
HONY TRAP HI P.F.C.	EACH	8	8	B & C UTILITY SUPPLY
MANHOLE	EACH	8	8	ATLANTIC PRECAST CON.
8" x 6" WYE	EACH	3	3	SDR 35, HARGO FITTINGS
6" PLUG	EACH	7	7	" "

REVIEWED FOR HOWARD SOIL CONSERVATION DISTRICT AND MEETS TECHNICAL REQUIREMENT
 Signature: *[Signature]* Date: 8-29-86
 U.S. SOIL CONSERVATION SERVICE

THIS DEVELOPMENT PLAN IS APPROVED FOR SOIL EROSION AND SEDIMENT CONTROL BY THE HOWARD COUNTY CONSERVATION DISTRICT
 Approved: *[Signature]* Date: 8/29/86
 HOWARD S.C.D.

NOTE: SEDIMENT CONTROL MEASURES WILL BE IMPLEMENTED IN ACCORDANCE WITH ARTICLE NO. 15 OF THE SPECIFICATION AND WITH ROAD CONSTRUCTION PLAN F-84-210.

DEPARTMENT OF PUBLIC WORKS
 HOWARD COUNTY, MARYLAND
 Signature: *[Signature]* Date: 9-5-86
 DIRECTOR OF PUBLIC WORKS

Signature: *[Signature]* Date: 9-5-86
 CHIEF - BUREAU OF UTILITIES

Signature: *[Signature]* Date: 9-5-86
 CHIEF - LAND DEVELOPMENT DIVISION

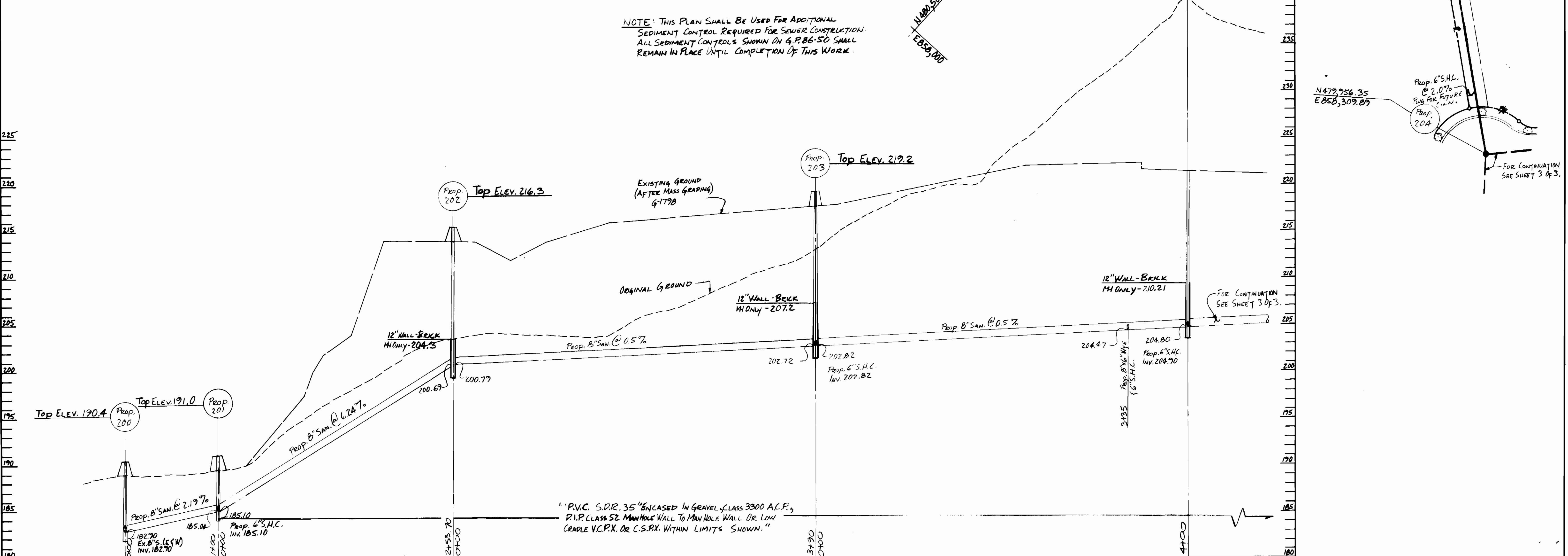
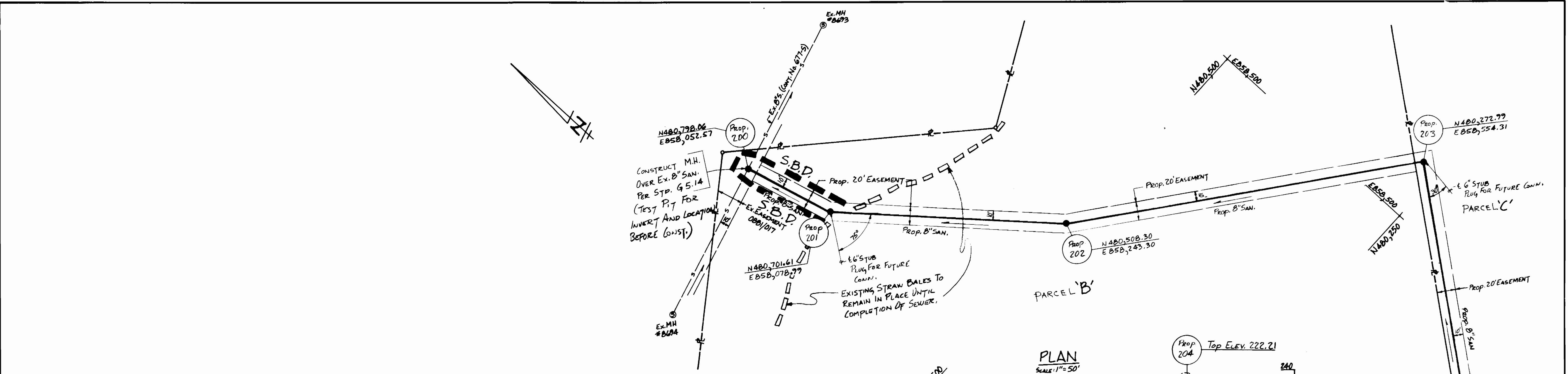
THE ARUNDEL CORPORATION
 ARUNDEL CORPORATE CENTER, SUITE 100
 110 WEST RD. TOWSON MD 21204
 (301) 296-6400
 LAND PLANNERS, LAND SURVEYORS, CIVIL ENG.

STATE OF MARYLAND
 REGISTERED PROFESSIONAL ENGINEER
 C. ROBERT SHINHAM
 Date: 6/5/86

DES.	DRN.	CHK.	DATE	BY	NO.	REVISION	DATE
C.R.S.	M.T.Y.	C.R.S.	6-6-86				

TITLE SHEET
 CONT 24-1485-D

BALTIMORE WASHINGTON INDUSTRIAL PARK
 SECTION II
 PARCELS 'A', 'B', 'C', 'D' & 'E'
 CONTRACT No. 24-1485-D
 6th. ELECTION DISTRICT
 HOWARD COUNTY, MARYLAND
 SCALE AS SHOWN
 SHEET 1 OF 3



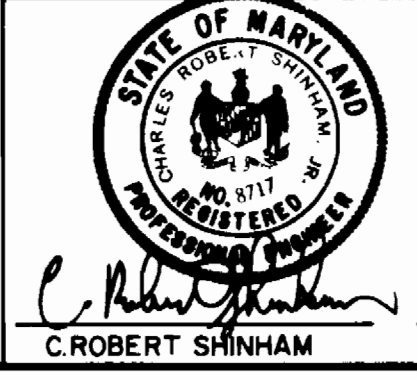
REVIEWED FOR HOWARD SOIL CONSERVATION DISTRICT AND MEETS TECHNICAL REQUIREMENT
 Signature: *[Signature]* Date: 8-29-86
 U.S. SOIL CONSERVATION SERVICE

THIS DEVELOPMENT PLAN IS APPROVED FOR SOIL EROSION AND SEDIMENT CONTROL BY THE HOWARD COUNTY CONSERVATION DISTRICT
 Approved: *[Signature]* Date: 8/29/86
 HOWARD S.C.D.

NOTE: SEDIMENT CONTROL MEASURES WILL BE IMPLEMENTED IN ACCORDANCE WITH ARTICLE NO. 15 OF THE SPECIFICATION AND WITH ROAD CONSTRUCTION PLAN F-84-210.

DEPARTMENT OF PUBLIC WORKS
 HOWARD COUNTY, MARYLAND
 Director: *[Signature]* 9-5-86
 Chief-Bureau of Engineering: *[Signature]* 9-5-86
 Chief-Bureau of Utilities: *[Signature]* 9-5-86
 Chief-Land Development Division: *[Signature]* 9-5-86

THE ARUNDEL CORPORATION
 ARUNDEL CORPORATE CENTER, SUITE 100
 110 WEST RD. TOWSON MD 21204
 (301) 296-6400
 LAND PLANNERS, LAND SURVEYORS, CIVIL ENG.

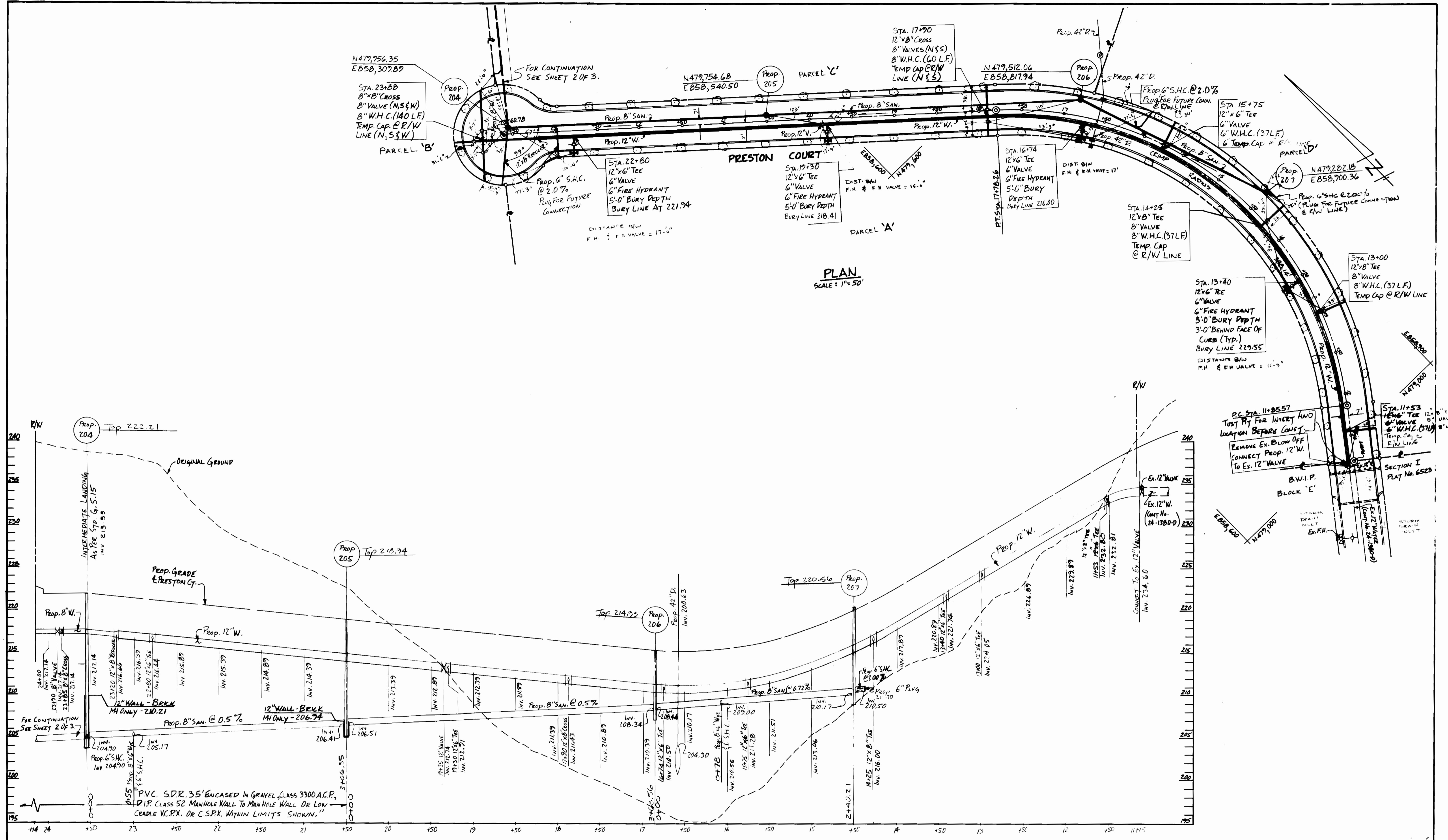


DES.	DRN.	CHK.	DATE	BY	NO.	REVISION	DATE
C.R.S.	M.T.Y.	C.R.S.	7-3-86				

8" SANITARY SEWER
 PLAN & PROFILE
 CONT 24-1485-D

BALTIMORE WASHINGTON INDUSTRIAL PARK
 SECTION II
 PARCELS 'A', 'B', 'C', 'D' & 'E'
 CONTRACT No. 24-1485-D
 6th. ELECTION DISTRICT
 HOWARD COUNTY, MARYLAND

SCALE AS SHOWN
 SHEET 2 OF 3



PLAN
SCALE: 1"=50'

PROFILE

SCALE: HOR. 1"=50'
VERT. 1"=5'

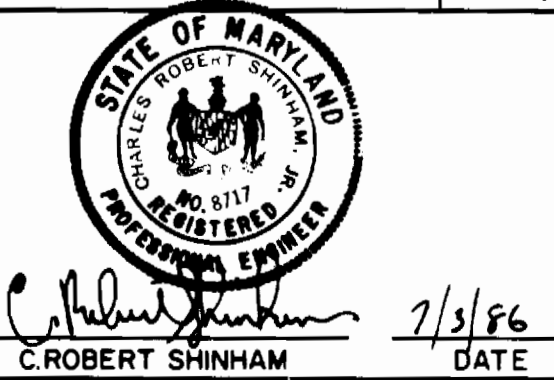
REVIEWED FOR HOWARD SOIL CONSERVATION DISTRICT AND MEETS TECHNICAL REQUIREMENT
James M. [Signature]
 Signature Date: 8-29-86
 U.S. SOIL CONSERVATION SERVICE

THIS DEVELOPMENT PLAN IS APPROVED FOR SOIL EROSION AND SEDIMENT CONTROL BY THE HOWARD COUNTY CONSERVATION DISTRICT
 Approved: *Stephen L. [Signature]*
 Signature Date: 8/29/86
 HOWARD S.C.D.

NOTE: SEDIMENT CONTROL MEASURES WILL BE IMPLEMENTED IN ACCORDANCE WITH ARTICLE NO. 15 OF THE SPECIFICATION AND WITH ROAD CONSTRUCTION PLAN F-B6-210.

DEPARTMENT OF PUBLIC WORKS
 HOWARD COUNTY, MARYLAND
 Director of Public Works: *James F. [Signature]* 9-5-86
 Chief - Bureau of Engineering: *William H. [Signature]* 9-5-86
 Chief - Bureau of Utilities: *Robert M. [Signature]* 9-5-86
 Chief - Land Development Division: *William H. [Signature]* 9-5-86

THE ARUNDEL CORPORATION
 ARUNDEL CORPORATE CENTER, SUITE 100
 110 WEST RD. TOWSON MD 21204
 (301) 296-6400
 LAND PLANNERS, LAND SURVEYORS, CIVIL ENG.
 C. ROBERT SHINHAM 7/3/86



DES: C.R.S.	DATE: 7-3-86
DRN: M.T.V.	BY: NO.
CHK: C.R.S.	REVISION
DATE: 7-3-86	DATE

**WATER & SEWER
 PLAN & PROFILE**
 CONT 24-1485-D

BALTIMORE WASHINGTON INDUSTRIAL PARK
 SECTION II
 PARCELS 'A', 'B', 'C', 'D' & 'E'
 CONTRACT No. 24-1485-D
 6th. ELECTION DISTRICT
 HOWARD COUNTY, MARYLAND

SCALE AS SHOWN
 SHEET 3 OF 3