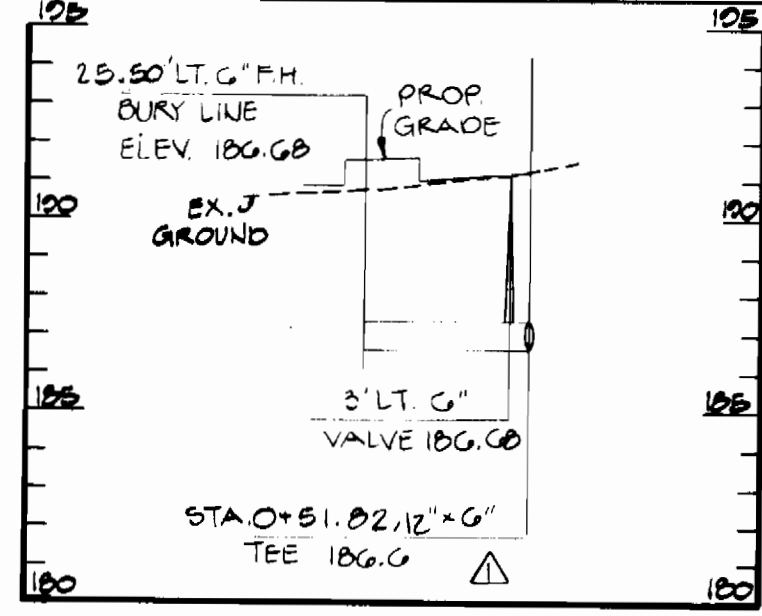
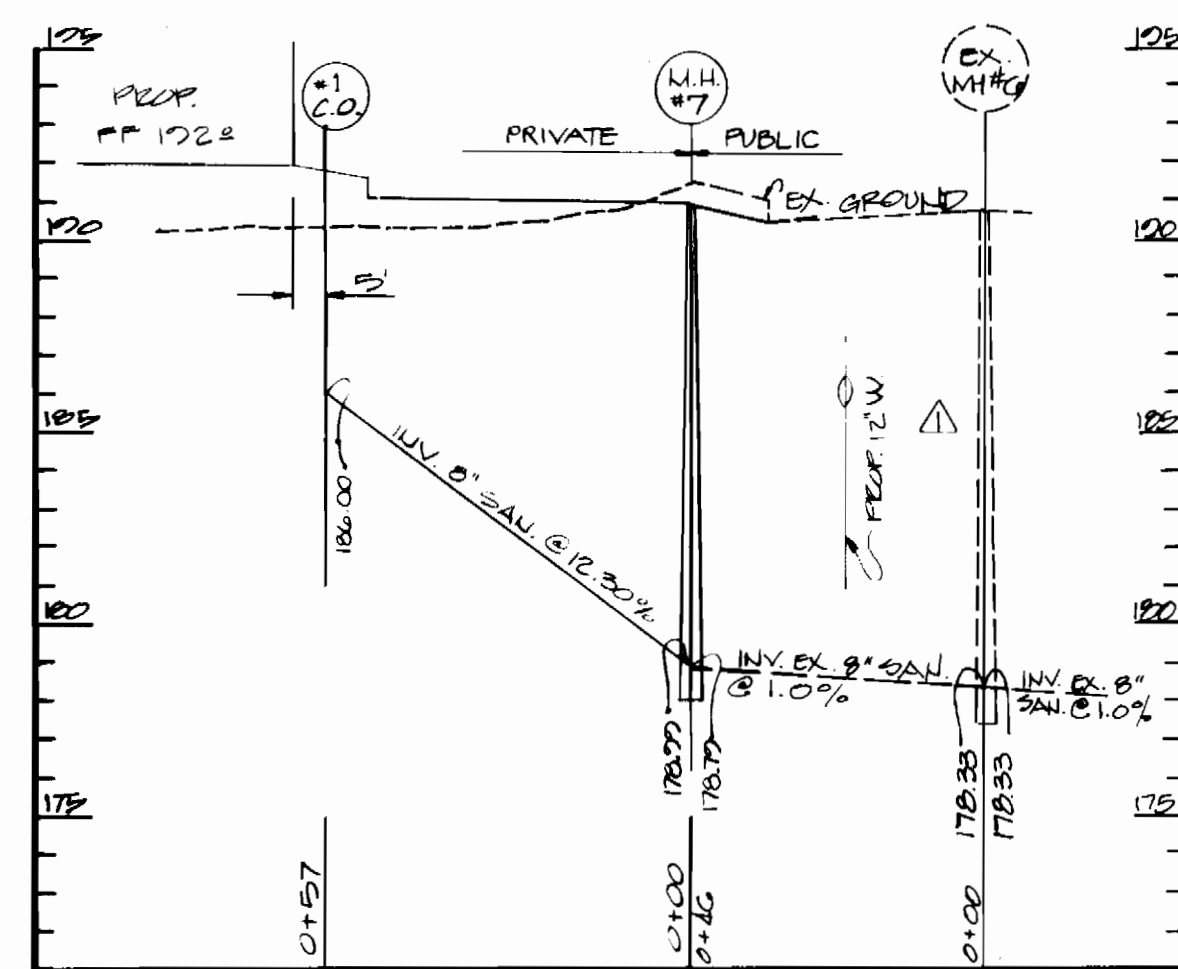


PLAN
SCALE: 1"=50'

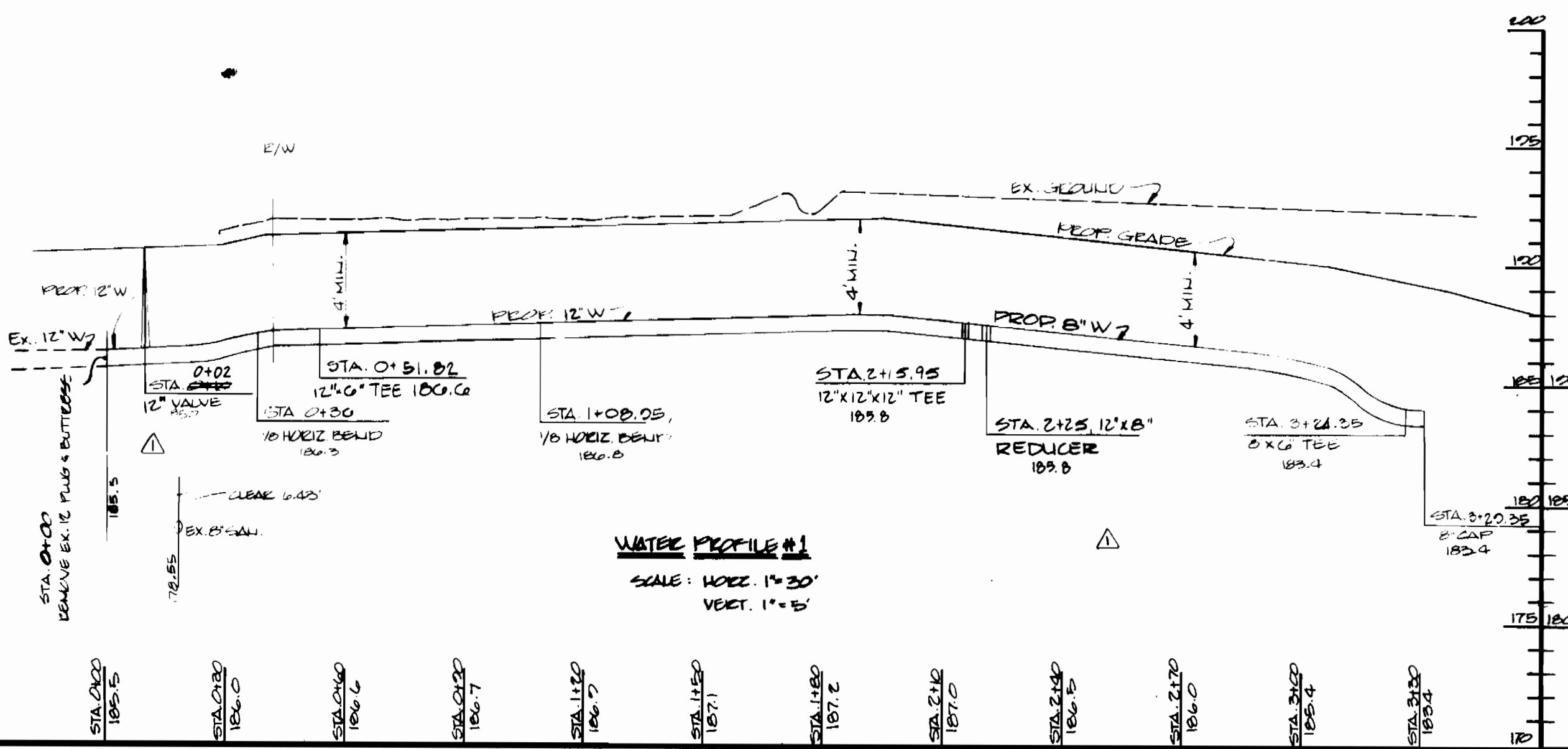
QUANTITIES			
ITEM	ESTIMATED	AS-BUILT	MATERIAL / SUPPLIER
12" D.I.P.	237'	237'	CL 92 D.I.P. - ATLANTIC
8" D.I.P.	105'	105'	CL 92 D.I.P. - ATLANTIC
6" D.I.P.	85'	35'	CL 92 D.I.P. - ATLANTIC
12" X 8" BEZEL	1	1	CL 250 - UNION
12" VALVE	2	2	MUELLER
8" CAP	1	1	CL 250 - UNION
6" F.H. VALVE	2	2	MUELLER A-2570-20
12" X 6" TEE	1	1	CL 250 - UNION
12" X 6" TEE	2	2	CL 250 - UNION
6" F.H.	2	2	MUELLER A-425
12" 1/8 HORZ. BEND	2	2	CL 250 - UNION
12" CAP	1	1	ATLANTIC PRECAST
12" X 12" X 12" TEE	1	1	CL 250 - UNION



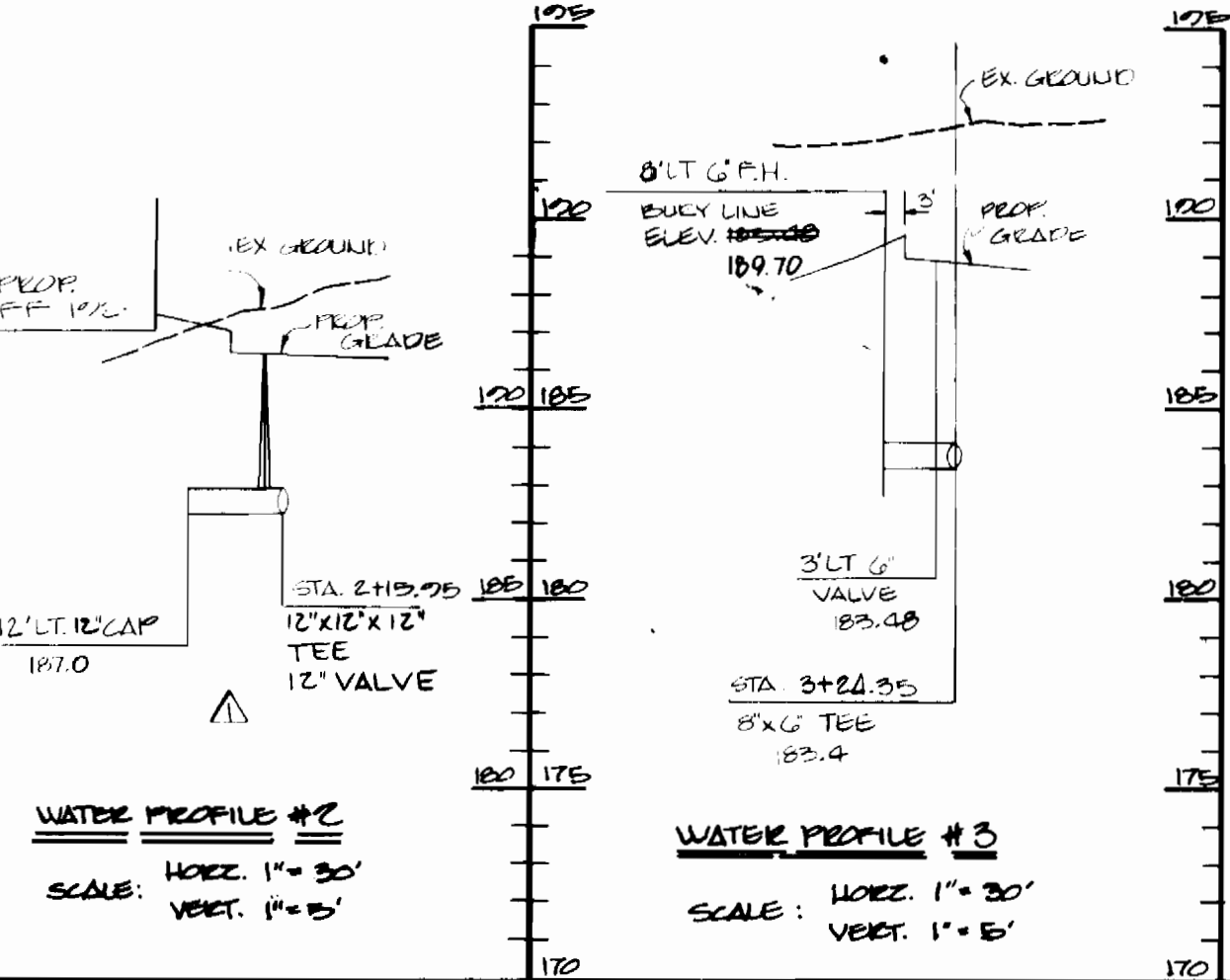
WATER PROFILE #4
SCALE: HORIZ. 1"=30'
VERT. 1"=8'



SANITARY SEWER PROFILE
SCALE: HORIZ. 1"=30'
VERT. 1"=5'



WATER PROFILE #1
SCALE: HORIZ. 1"=30'
VERT. 1"=5'



WATER PROFILE #2
SCALE: HORIZ. 1"=30'
VERT. 1"=5'

NOTES:

- APPROXIMATE LOCATION OF EXISTING MAINS ARE SHOWN. THE CONTRACTOR SHALL TAKE ALL NECESSARY PRECAUTIONS TO PROTECT EXISTING MAINS AND SERVICES AND MAINTAIN UNINTERRUPTED SUPPLY. ANY DAMAGE INCURRED SHALL BE REPAIRED IMMEDIATELY TO THE SATISFACTION OF THE ENGINEER AT THE CONTRACTOR'S EXPENSE.
- ALL HORIZONTAL CUTTINGS ARE BASED ON MARYLAND STATE COORDINATES.
- ALL PIPE ELEVATIONS SHOWN ARE INVERT ELEVATIONS.
- CLEAR ALL UTILITIES BY A MINIMUM 6". CLEAR ALL POLES BY 2'-0" MINIMUM OVER TUNNEL AS REQUIRED. ANY COST INCURRED TO THE CONTRACTOR FOR TUNNELING OR BRACING AT POLES SHALL BE INCLUDED IN THE UNIT PRICES BID FOR CONSTRUCTION OF THE MAIN.
- FOR DETAILS NOT SHOWN ON THE DRAWINGS, AND FOR MATERIALS AND CONSTRUCTION METHODS, USE HOWARD COUNTY DESIGN MANUAL VOL. II, STANDARD SPECIFICATIONS AND DETAILS FOR CONSTRUCTION. THE CONTRACTOR SHALL HAVE A COPY OF VOL. II ON THE JOB.
- CONTRACTOR SHALL LOCATE EXISTING UTILITIES A MINIMUM OF TWO WEEKS IN ADVANCE OF CONSTRUCTION OPERATIONS IN THE VICINITY OF PROPOSED UTILITIES AT HIS OWN EXPENSE.
- CONTRACTOR SHALL NOTIFY THE FOLLOWING UTILITIES OR AGENCIES AT LEAST 5 (FIVE) WORKING DAYS BEFORE STARTING WORK ON THESE PLANS: STATE HIGHWAY ADMINISTRATION 531-5533; BALTO. GAS & ELECT. CO. - C.A.T. SERVICES - 561-2505; BALTO. GAS & ELECT. CO. - UNDERGROUND DAMAGE CONTROL 284-7621; BALTO. GAS & ELECTRIC CO. - TROUBLE SHOOTING 208-2013; MISS. UTILITY 1-559-0100; COLOMBIA PIPELINE CO. 775-1300; BUREAU OF UTILITIES, HOWARD CO. DEPT. OF PUBLIC WORKS 992-2366.
- TREES AND SHRUBS ARE TO BE PROTECTED TO MAXIMUM EXTENT FROM DAMAGE. TREES AND SHRUBS LOCATED WITHIN THE CONSTRUCTION SITE ARE NOT TO BE REMOVED OR DAMAGED BY THE CONTRACTOR.
- CONTRACTOR SHALL REMOVE TREES, ROOTS, AND STUMPS, ALONG LINE OF EXCAVATION. PAYMENT FOR SUCH REMOVAL SHALL BE INCLUDED IN THE UNIT PRICE BID FOR CONSTRUCTION OF THE MAIN.
- ALL WATER MAINS TO BE 12" D.I.P. UNLESS OTHERWISE NOTED.
- TOPS OF ALL WATER MAINS TO HAVE A MINIMUM OF 4" COVER UNLESS OTHERWISE NOTED.
- VALVE ADJACENT TO TEES SHALL BE STREPPED TO TEES.
- ALL FITTINGS SHALL BE BUTTRESSED OR ANCHORED WITH CONCRETE IN ACCORDANCE WITH THE STANDARD DETAILS. (UNLESS OTHERWISE PROVIDED ON THE DRAWINGS)
- PIECE HYDRANTS SHALL BE SET TO THE BURY LINE ELEVATIONS SHOWN ON THE DRAWINGS. ALL PIECE HYDRANTS TO BE SET 3" (THREE FEET) BEHIND PROPOSED FACE OF CURB UNLESS OTHERWISE NOTED. ALL PIECE HYDRANTS SHALL BE STREPPED AND BUTTRESSED WITH CONCRETE IN ACCORDANCE WITH STANDARD DETAILS. (SOIL AROUND THE CONTRACTOR SHALL NOT OPERATE ANY WATER MAIN VALVES ON THE EXISTING WATER SYSTEMS.)
- MINIMUM CRIMP RADIUS WILL BE AS SPECIFIED BY PIPE MANUFACTURER.
- PLACE REGULATORY "MEN WORKING" AND "WARNING" SIGNS AS REQUIRED TO COMPLY WITH THE MD. STATE HIGHWAY ADMINISTRATION MANUAL FOR HIGHWAY CONSTRUCTION AND MAINTENANCE OPERATIONS.
- ALL SEWER MAINS SHALL BE C.S.P.P., R.C.S.P., VC.P.X., ACP CLASS 2400 OR P.V.C. UNLESS OTHERWISE NOTED.
- THE CONTRACTOR SHALL PROVIDE A JOINT IN A SEWER MAIN WITHIN 2'-0" MIN. OF EXTERIOR MANHOLE WALL.
- ALL MANHOLES SHALL BE 4'-0" INSIDE DIAMETER UNLESS OTHERWISE NOTED.
- MANHOLES SHOWN WITH 12" AND 18" WALLS ARE BRICK MANHOLES ONLY.
- SERVICE CLAMPS ARE TO HAVE STAINLESS STEEL STRAPS.
- CONTRACTOR SHALL NOTIFY THE ENGINEER, G.W. STEPHENS JR. & ASSOC. INC. 819-8120 A MIN. OF TWO (2) WORKING DAYS IN ADVANCE OF COVERING ANY UNDERGROUND UTILITY TO ALLOW INSPECTION OF THE INSTALLATION FOR PURPOSE OF "AS-BUILT" CERTIFICATION.

THE DEVELOPMENT PLAN IS APPROVED FOR SOIL EROSION AND SEDIMENT CONTROL BY THE HOWARD SOIL CONSERVATION DISTRICT:

APPROVED: *Stephen J. Poulos* 4/21/86
HOWARD SOIL CONSERVATION DISTRICT

REVIEWED FOR HOWARD SOIL CONSERVATION DISTRICT AND MEETS TECHNICAL REQUIREMENTS.

APPROVED: *James M. Stoh* 4-21-86
U.S. SOIL CONSERVATION SERVICE

SEPMINT CONTROL MEASURES FOR THIS CONTRACT WILL BE IMPLEMENTED IN ACCORDANCE WITH ARTICLE 15 OF THE STANDARD SPECIFICATION & S.P. 26-40.

DEPARTMENT OF PUBLIC WORKS
HOWARD COUNTY, MARYLAND

Joseph F. Nemy 4-29-86
DIRECTOR OF PUBLIC WORKS

Robert M. Bainger 4-29-86
CHIEF, BUREAU OF UTILITIES

James R. Kelly 4-29-86
CHIEF, BUREAU OF ENGINEERING

ENGINEER
GEORGE W. STEPHENS, JR.
& ASSOCIATES

803 ALLEGHENY AVENUE
TOWSON, MARYLAND 21284
828-8120

DESIGNER: J.F.
DRAWN: E.D.L.
CHECKER: J.S.S.

REV. NO. DATE

REV. 8 TO 12" W. STA. 0+03 TO STA. 2+25 & 12" L.T. OF STA. 2+15.95 & QUANTITIES & PROFILES 5/11/86

PLAN AND PROFILE FOR PROPOSED WATER MAIN CONTRACT NO. 24-1472-0

600 SCALE MAP NO. 12 BLACK NO.

PROPOSED OFFICE & WAREHOUSE
CORRIDOR NORTH, PANEL C-3
HOWARD CO, MD.
FEB. 26, 1986

SCALE AS SHOWN
SHEET NO. 1 OF 1