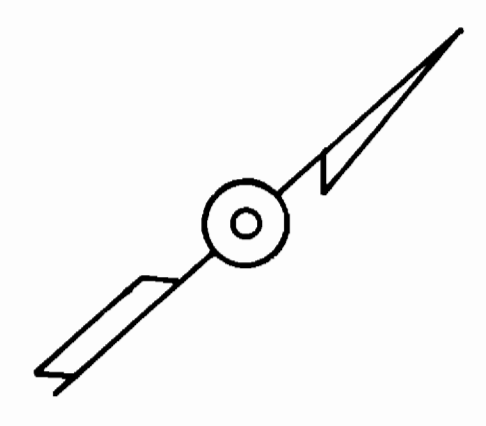
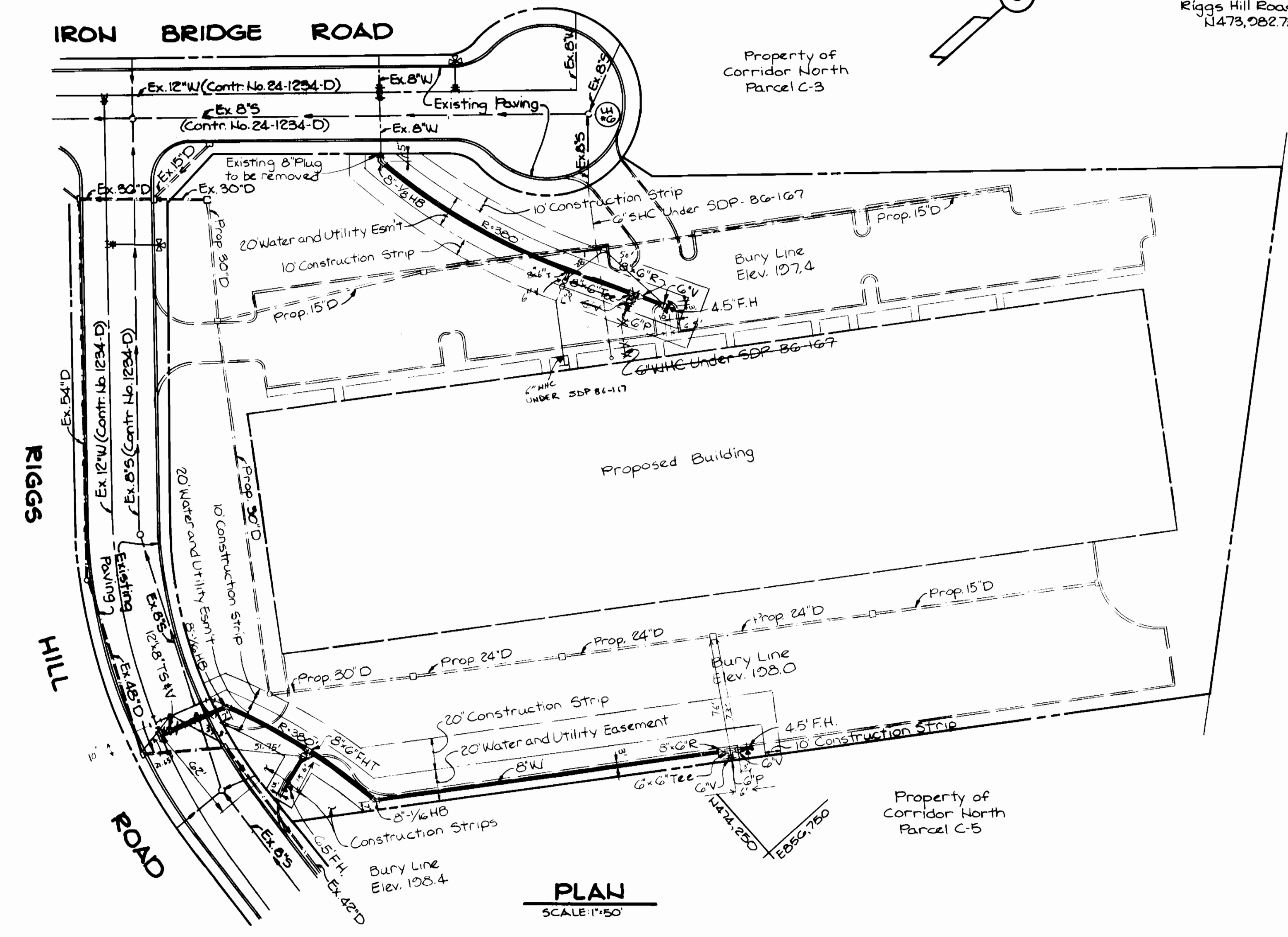
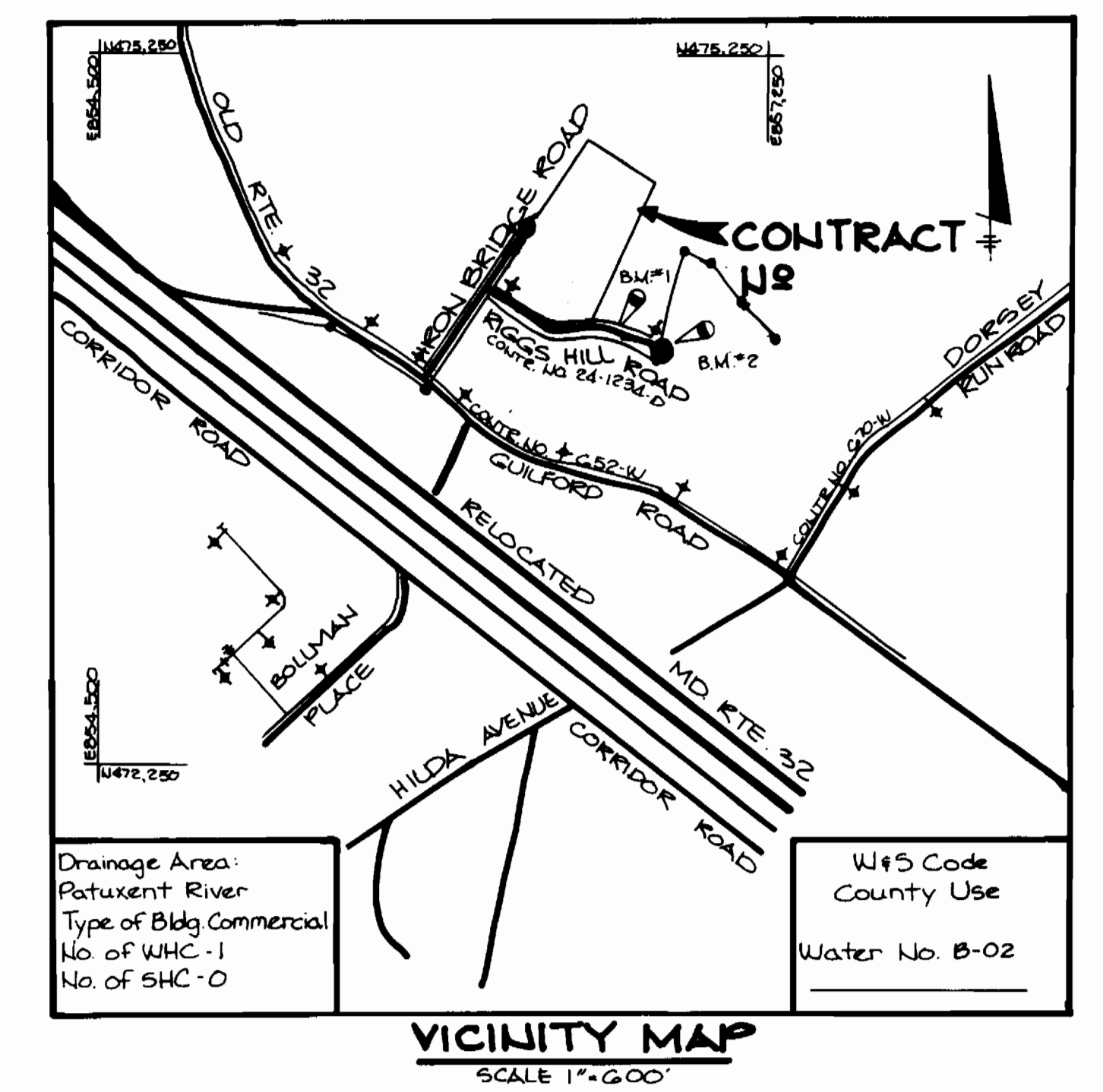


1474.250  
1855.000



**Bench Marks**  
 B.M. #1 Elev. 202.28  
 Iron pipe 30.00' East of Parcel C-4  
 along North R/W line of Riggs Hill Road  
 N474.032.16 E856.636.03  
 B.M. #2 Elev. 206.60  
 Iron pipe on North R/W line of  
 Riggs Hill Road at Cul-de-sac  
 N473.982.73 E856.753.02

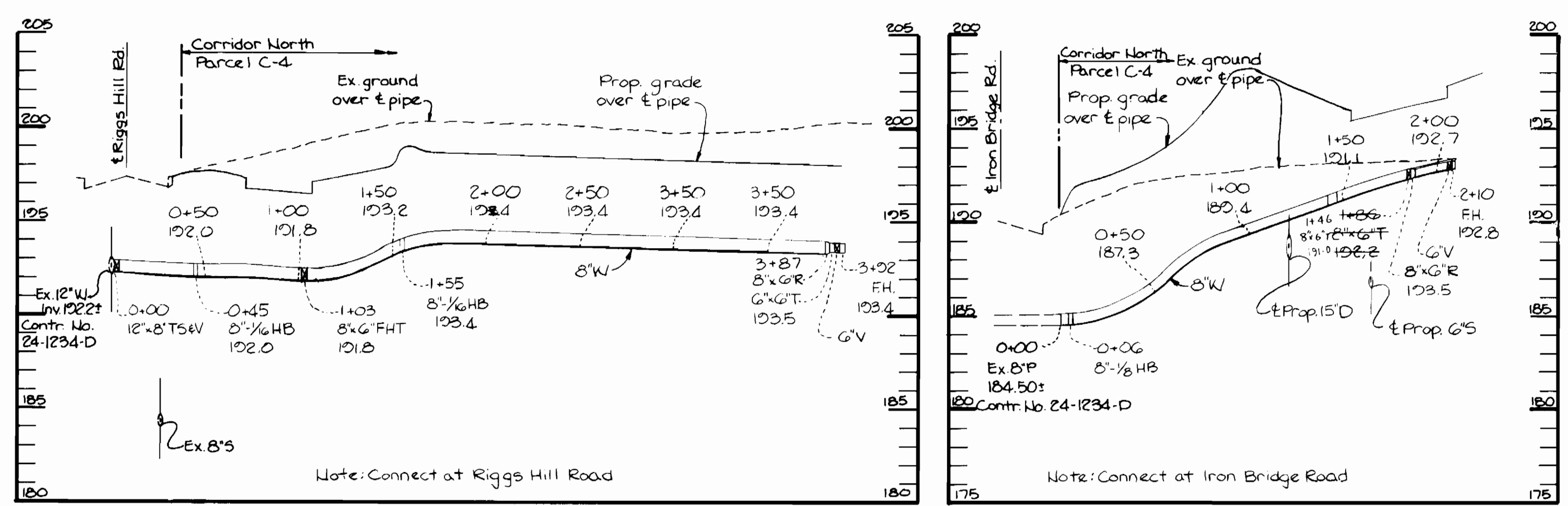


1474.750  
1855.750

Property of  
Digi-Data  
550/126

**GENERAL NOTES**

- 1) Approximate location of existing mains are shown. The contractor shall take all necessary precautions to protect existing mains and services and maintain uninterrupted supply. Any damage incurred shall be repaired immediately to the satisfaction of the Engineer at the Contractor's expense.
- 2) All horizontal controls are based on Maryland State Coordinates.
- 3) All vertical controls are based on U.S.G.S data.
- 4) All pipe elevations shown are invert elevations.
- 5) Clear all utilities by a minimum of 6". Clear all poles by 2'-0" minimum or tunnel as required. The owner has contacted the utility companies and has made arrangements for bracing of poles as shown on the drawings. In the event the contractor's work requires the bracing of additional poles, any cost incurred by the owner for the bracing of additional poles or damages shall be deducted from money owed the contractor. The contractor shall coordinate with the utility companies to schedule the bracing of the poles.
- 6) For details not shown on the drawings, and for materials and construction methods, use Howard County Design Manual, Volume IV, Standard Specifications and Details for construction. The contractor shall have a copy of Volume IV on the job.
- 7) Where test pits have been made on existing utilities, they are noted by the symbol at the location of the test pit. A note or notes containing the results of the test pit or pits is included on the drawings. Existing utilities in the vicinity of the proposed work for which test have not been dug shall be located by the contractor two weeks in advance of construction operations at his own expense.
- 8) Contractor shall notify the following utilities or agencies at least five working days before starting work shown on these plans:  
 State Highway Administration - 531-5533  
 Baltimore Gas & Electric Co. - Contractor Services 561-2585  
 Baltimore Gas & Electric Co. - Under Ground Damage Control - 234-5621  
 Baltimore Gas & Electric Co. - Trouble shooting - 238-2013  
 Miss Utility - 1-555-0100  
 Colonial Pipeline Co. - 795-1390  
 Bureau of Utilities, Howard County Department of Public Works - 292-2366
- 9) Trees are to be protected from damage to maximum extent. Trees located within the construction strip are not to be removed or damaged by the contractor.
- 10) Contractor shall remove trees, stumps and roots along the line of excavation as directed by the Engineer. Payment for such removal shall be included in the unit price bid for excavation and backfill.
- 11) Place regulation "Men Working" and warning signs as required to comply with Maryland State Highway Administration Manual of Traffic Control for Highway Construction and Maintenance Operations.
- 12) All water mains to be D.I.P. unless otherwise noted.
- 13) Top of all water mains to have a minimum of 3 1/2' cover unless otherwise noted.
- 14) Valves adjacent to trees shall be strapped to trees.
- 15) Block all fittings with concrete.
- 16) Bury line elevations on fire hydrants shall be set to the elevations shown on the drawings. All fire hydrants shall be strapped and buttressed with concrete in accordance with standard details Soil around the fire hydrant to be compacted in accordance with Section 1005 & 1008 of the General Requirements for Water and Sewer.
- 17) All water house connections shall be for an inside meter setting.
- 18) The contractor shall not operate any water main valves on the existing system.
- 19) For all copper water house connections utilize flared type fittings only.
- 20) Profile stations shall be adjusted as necessary to conform to Plan dimensions.
- 21) No pipe shall be laid until lines of excavation have been brought to subgrade.



Sediment control measures for this contract will be implemented in accordance with Article 15 of the specifications and as shown on this plan and as shown on EDP-86-167

Howard Soil Conservation District:  
Reviewed for Howard Soil Conservation District and meets technical requirements.  
*Christina M. Pines* 4-30-86  
U.S. Soil Conservation Service Date

This Plan is approved for soil erosion and sediment control by the Howard Soil Conservation District:  
*Stephen T. Fisher* 4/30/86  
Howard Soil Conservation District Date

Item	Quantities		Material Supplier
	Estimated	As Built	
8" Water	573 LF	533 LF	D.I.P. CL 52 / 4 R.F.F.I.N
6" Water	65 LF	105 LF	" " " "
12" B.T.S. & V	1	1 EA	M & H VALVE CO
6" Valves (Excl. F.H.)	2	2 EA	" " " "
Fire Hydrant	3	3 EA	MODEL 729 M & H VALVE

DEPARTMENT OF PUBLIC WORKS HOWARD COUNTY, MARYLAND <i>John F. Nummy</i> 5-6-86 DIRECTOR OF PUBLIC WORKS DATE <i>Robert M. Brimmer</i> 5-2-86 CHIEF BUREAU OF UTILITIES DATE	THE RIEMER GROUP, INC 3105 HEALTH PARK DRIVE ELLICOTT CITY, MARYLAND 21043  <i>Arthur E. Muegge</i> ARTHUR E. MUEGGE	DES: D.A.M. DRN: D.A.M. CHK: DATE: 2/11/86	SWW 1 RELOCATION OF 6" WATER LINE / REVISED PLAN & PROFILE 2 REVISION OF 8" WATER LINE / PLANT PROFILE 10/4/84	PLAN AND PROFILE OF A WATER MAIN 600' SCALE MAP NO. 40 BLOCK NO.	CORRIDOR NORTH PARCEL C-4 ELECTION DISTRICT NO. 6 CONTRACT NO. 44-1468-D SCALE AS SHOWN SHEET 1 OF 1
		CHIEF BUREAU OF ENGINEERING DATE <i>William J. ...</i> 5-5-86 CHIEF LAND DEVELOPMENT DIVISION DATE	BY NO. REVISION DATE	600' SCALE MAP NO. 40 BLOCK NO.	AS-BUILT 12-5-86