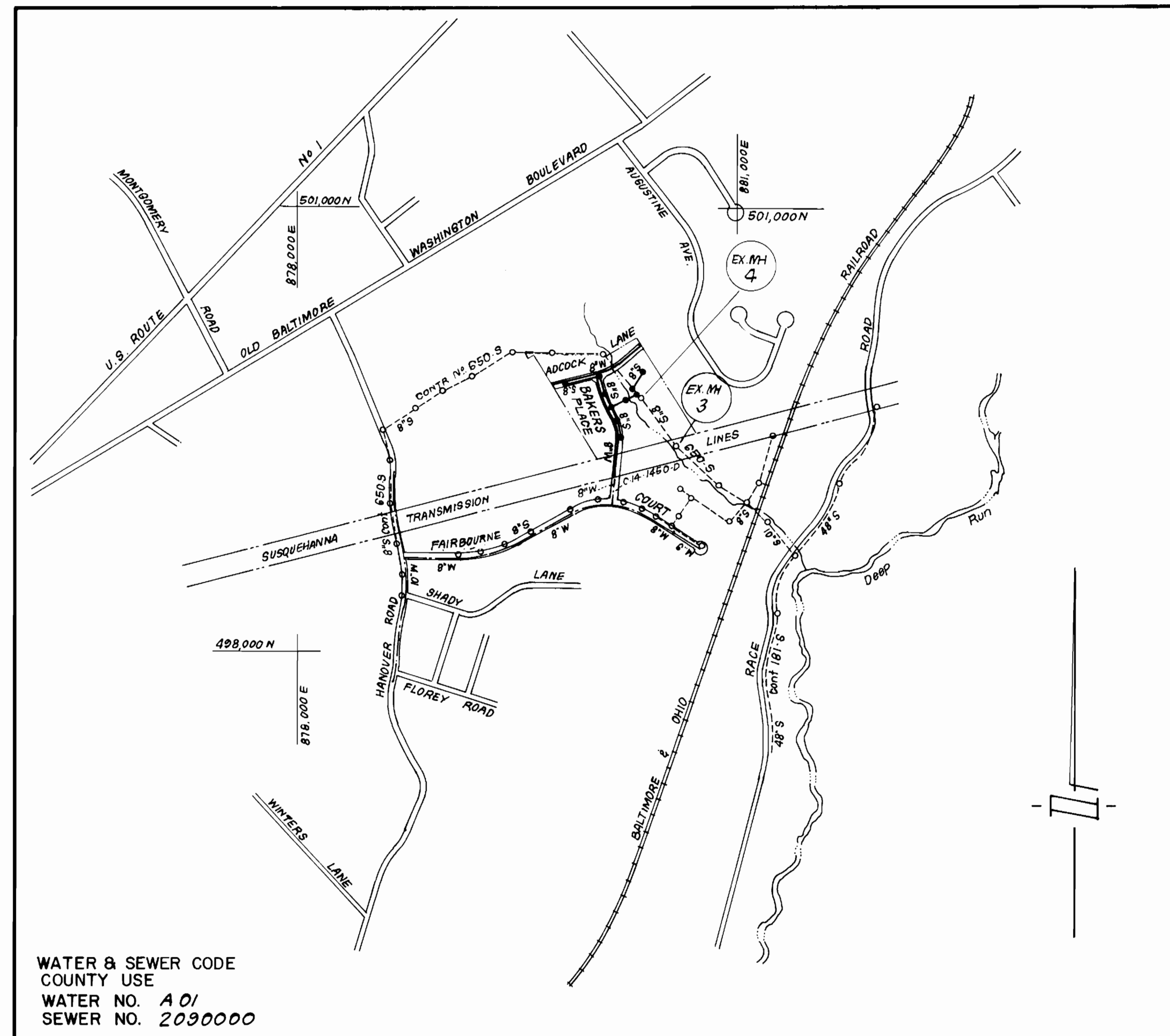


TYPE OF BUILDING	Single Family
Nº OF LOTS	32
Nº OF WHC'S	32
Nº OF SHC'S	32
DRAINAGE AREA	Potapsc



WATER & SEWER CODE
 COUNTY USE
 WATER NO. A 01
 SEWER NO. 209000

VICINITY MAP
 SCALE 1" = 600'

GENERAL NOTES

- Approximate location of existing mains are shown. The contractor shall take all necessary precautions to protect existing mains and services and maintain uninterrupted supply. Any damage incurred shall be repaired immediately to the satisfaction of the Inspector, at the contractor's expense.
- All horizontal controls are based on Maryland State Coordinates.
- All vertical controls are based on U.S.G.S. Datum.
- All pipe elevations shown are invert elevations.
- Clear all utilities by a minimum of 6" clear all poles by 2'-0" minimum or tunnel as required. Any cost incurred to the contractor for tunneling or bracing at poles shall be included in unit prices bid for excavation and backfill.
- For details not shown on the drawings use Howard County Standard Details.
- For materials and construction methods use Howard County Standard Specifications & Hb. Co. Design Manual, Volume II. The Contractor shall have a copy of Volume II on the job.
- Contractor shall locate existing utilities a minimum of two (2) weeks in advance of construction operations in the vicinity of proposed utilities at his own expense.
- Contractor shall notify the following utilities or agencies at least five (5) working days before starting work shown on these plans.
 State Highway Administration - 531-5533
 Baltimore Gas & Electric Company - Contractor Services 561-2585
 Baltimore Gas & Electric Company - Underground Damage Control 234-5621
 Baltimore Gas & Electric Company - Trouble Shooting - 298-9013
 "Miss Utility" - 1-559-0100
 Chesapeake & Potomac (C & P) Telephone Company - 725-9976
 Colonial Pipeline Company - 795-1390
 Bureau of Utilities Howard County - 992-2366
- Trees are to be protected from damage to maximum extent. Trees located within the construction strip are not to be removed or damaged by the contractor.
- Contractor shall remove trees, stumps, and roots along line of excavation as directed by the Inspector. Payment for such removal shall be included in the unit price bid for excavation and backfill.
- Place regulation "Men Working" and warning signs as required to comply with Maryland State Highway Administration Manual of Traffic Control for Highway Construction and Maintenance Operations.
- All water mains to be D.I.P. unless otherwise noted.
- Top of all water mains to have a minimum of 3-1/2' cover unless otherwise noted.
- Valves adjacent to tees shall be strapped to tees.
- Block all fittings with concrete.
- Bury line elevations on fire hydrants shall be set to the elevations shown on the drawings. All fire hydrants shall be strapped and buttressed with concrete in accordance with standard details. Soil around the fire hydrant to be compacted in accordance with Sections 1003110.08 of the Standard Specifications.
- All water house connections shall be for an inside meter setting.
- The contractor shall not operate any water main valves on the existing system.
- All sewer mains shall be C.S.P.X., V.C.P.X., P.V.C., or A.C.P. Class 2400 unless otherwise noted.
- The contractor shall provide a joint in all sewer mains within 2'-0" of exterior manhole wall.
- All manholes shall be 4'-0" inside diameter, unless otherwise noted.
- Water main and water house connection lines must have a minimum of one foot separation from the sanitary sewer and sewer house connections as they cross. Except at crossings, water and sewer lines shall have a minimum horizontal separation of 10'.
- For all Copper Water House Connections, utilize flared type fittings only.
- Manholes designated thus: WT. shall have Watertight Frames & Covers.

CONTRACT NO.14-1466-D W&S
CANBURY WOODS
 SECTION I AREA 2
 HOWARD COUNTY, MARYLAND
 DEPARTMENT OF PUBLIC WORKS

QUANTITIES			
ITEM	EST'MD	AS-BUILT	MATERIAL / SUPPLIER
8" W	1444 LF	1,140 LF	GRIMM PIPE PRODUCTS CO/ATLANTIC PIPE
8" S	1377 LF	1,253 LF	BEL AIR ROAD SUPPLY CO, INC.
6" SHC	765 LF	601 LF	BEL AIR ROAD SUPPLY CO, INC.
1" WHC	115 LF	212 LF	BEL AIR ROAD SUPPLY CO, INC.
3/4" WHC	516 LF	402 LF	BEL AIR ROAD SUPPLY CO, INC.
FH	2 EA	2 LF	BEL AIR ROAD SUPPLY CO, INC.
4'-0" DIA. MH	14 EA	14 LF	ATLANTIC CONCRETE PRODUCTS INC.
8" V	3 EA	2 LF	ATLANTIC CONCRETE PRODUCTS INC.
8" DC TYPE "A"	1 EA		

Sediment Control Measures will be implemented in accordance with Article No. 15 of the Specifications & with Road Construction Plan F-86-177; Drawing, Sediment & Erosion Control.

REVIEWED FOR HOWARD SOIL CONSERVATION DISTRICT AND MEETS TECHNICAL REQUIREMENT.
 J. Holmiz 8-18-86
 SIGNATURE DATE

U.S. SOIL CONSERVATION SERVICE
 This Development Plan is approved for Soil Erosion and Sediment Control by the Howard Soil Conservation District.

APPROVED:
 Stephen L. Hah 8-18-86
 HOWARD S.C.D. DATE

SECTION I AREA 2
 CANBURY WOODS
 LOTS 69 THRU 103

DEPARTMENT OF PUBLIC WORKS
 HOWARD COUNTY, MARYLAND

George F. Nemmy 8-14-86
 DIRECTOR OF PUBLIC WORKS DATE

Richard E. Ray 8-19-86
 CHIEF, BUREAU OF ENGINEERING DATE

Res. W. Wood 8/13/86
 CHIEF, BUREAU OF UTILITIES DATE

Michael E. ... 8-19-86
 CHIEF, LAND DEVELOPMENT DIV. DATE

CFE CLARK · FINEFROCK & SACKETT
 ENGINEERS · PLANNERS · SURVEYORS

11315 LOCKWOOD DRIVE SILVER SPRING, MARYLAND 20904
 (301) 593-3400



DES:			
DRN:			
CHK:	CN 2	AS BUILT	8/31/86
	JTR 1	Revised Quantities & Sheet 2 of 3	10/8/87
DATE:	BY	NO.	REVISION

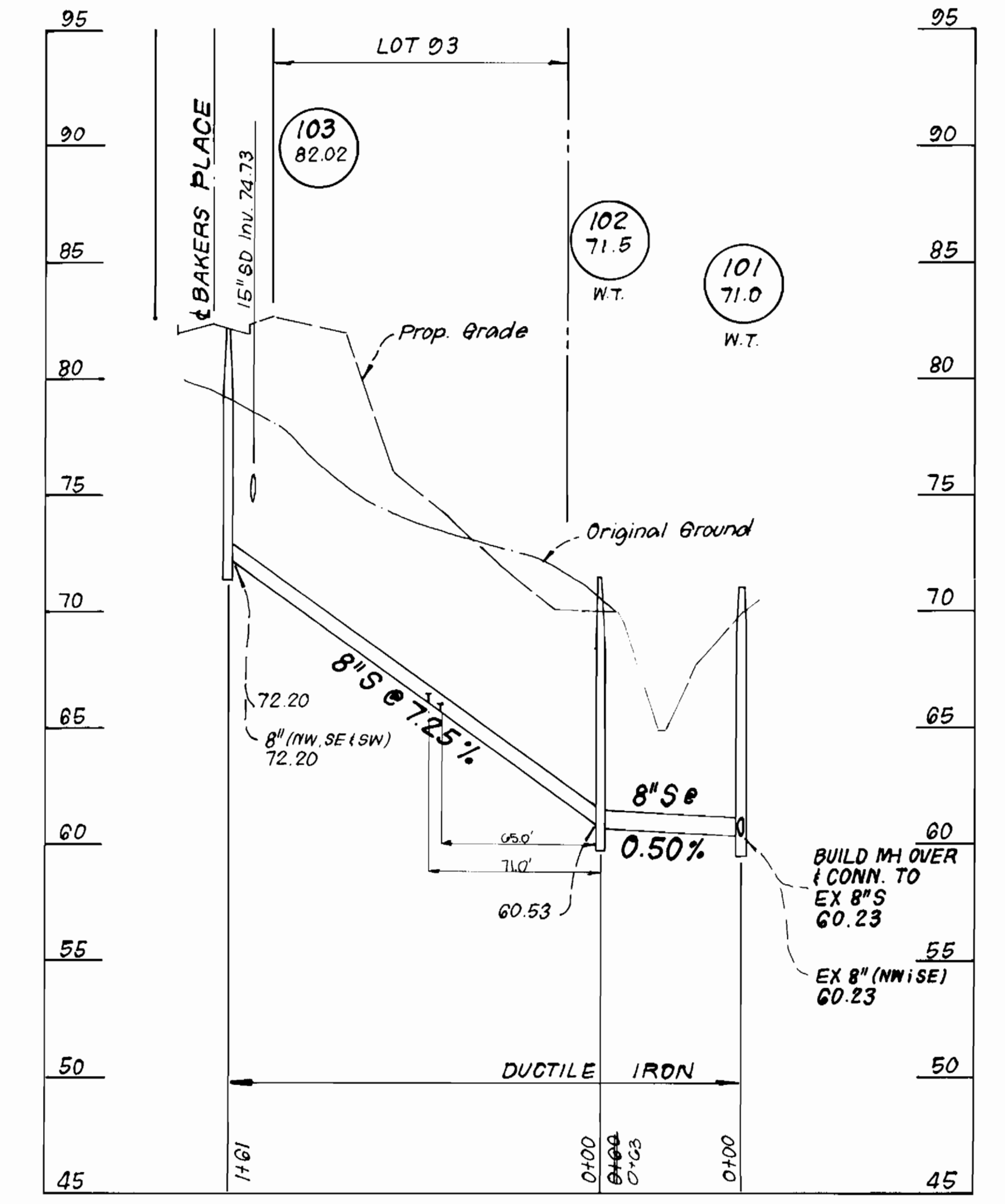
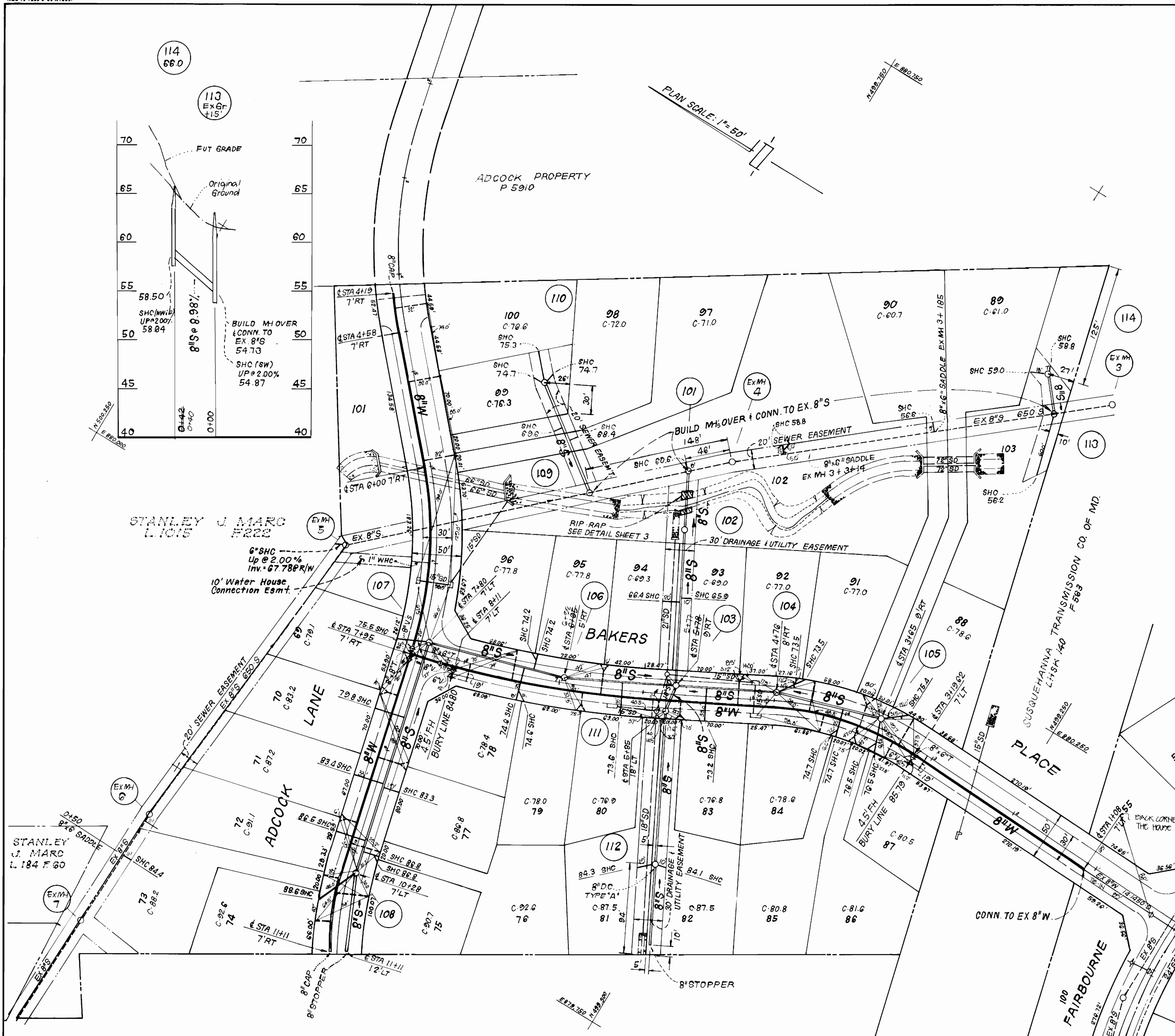
TITLE SHEET

600'SCALE MAP NO. _____ BLOCK NO. _____

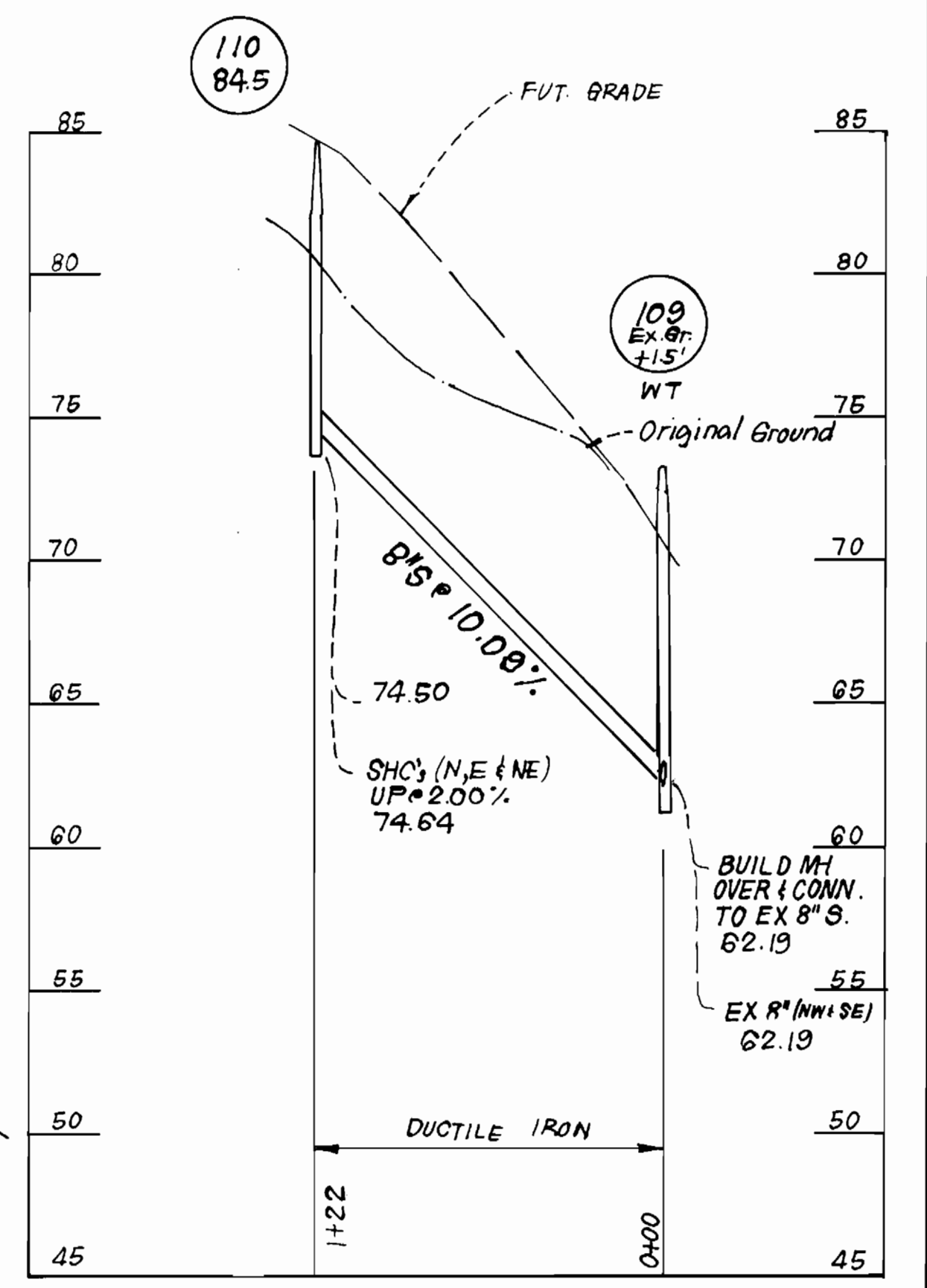
CANBURY WOODS
 SECTION I AREA 2
 1ST ELECTION DISTRICT
 CONTRACT NO. 14-1466-D

SCALE AS SHOWN

SHEET 1 OF 3



PROFILE SCALE
HOR: 1" = 50'
VERT: 1" = 5'



DEPARTMENT OF PUBLIC WORKS
HOWARD COUNTY, MARYLAND
8-19-88
DIRECTOR OF PUBLIC WORKS
CHIEF, BUREAU OF ENGINEERING
CHIEF, BUREAU OF UTILITIES

CLARK FINEPROCK & SACKETT
ENGINEERS - PLANNERS - SURVEYORS
11315 LOCKWOOD DRIVE SILVER SPRING, MARYLAND 20904
(301) 593-3400

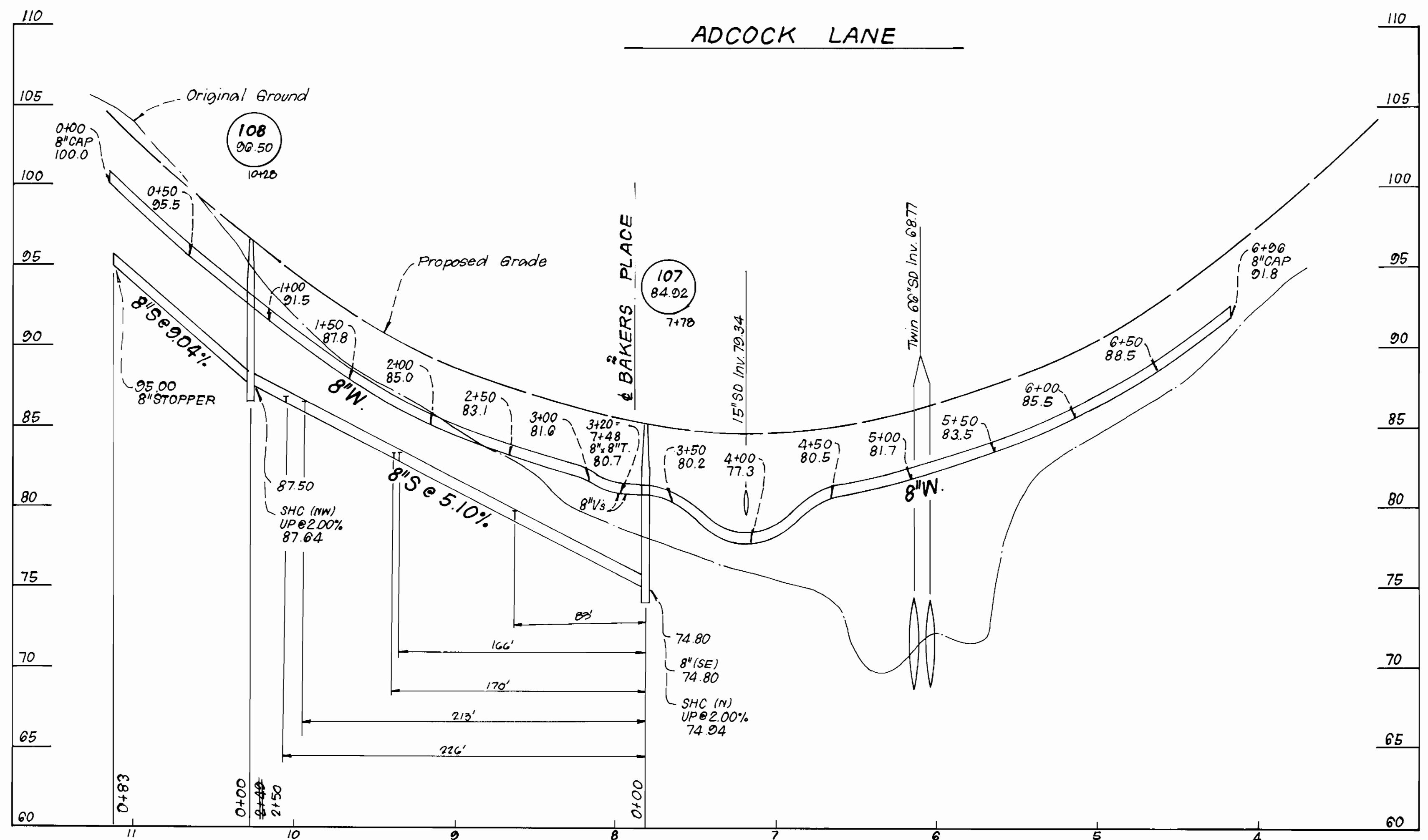


DES:	GES 4	Add W/F SHC to serve Marc Property	10/31/88
DRN:	CN 3	AS BUILT	03/01/89
CHK:	GES 2	Rev. SHC to Lots 140-150	11/16/87
	JTR 1	Revised Align of Adcock La. W/E in front of lots 73+74	10/8/87
	JTR 1	Revised Sewer Align. MH 109 & 110 & Added MH 113+114	10/8/87
DATE:	BY NO.	REVISION	DATE

PLAN AND PROFILES OF
WATER & SEWER MAINS
600'SCALE MAP NO. _____ BLOCK NO. _____

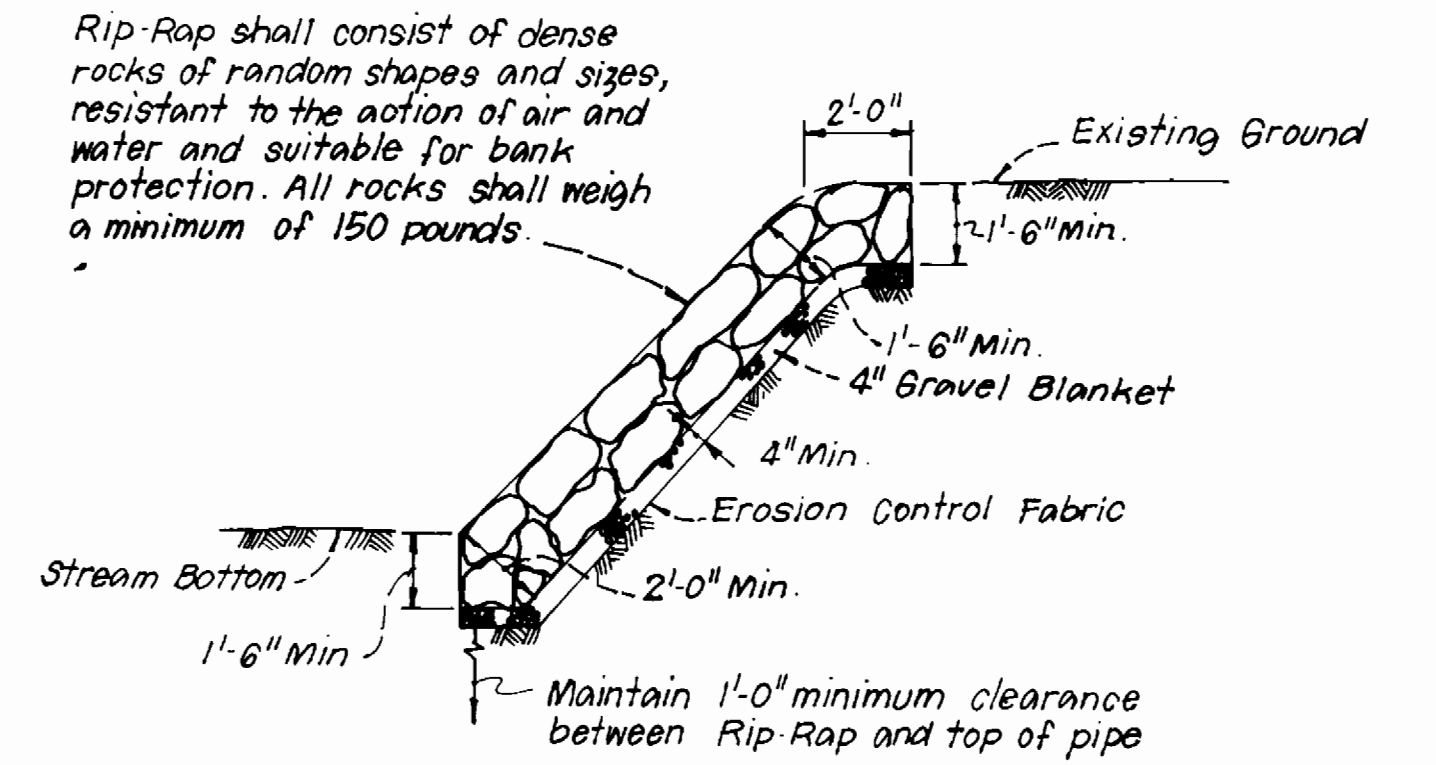
CANBURY WOODS
SECTION 1 AREA 2
1ST ELECTION DISTRICT
CONTRACT NO. 14-1466-D

SCALE
AS SHOWN
SHEET
2 OF 3

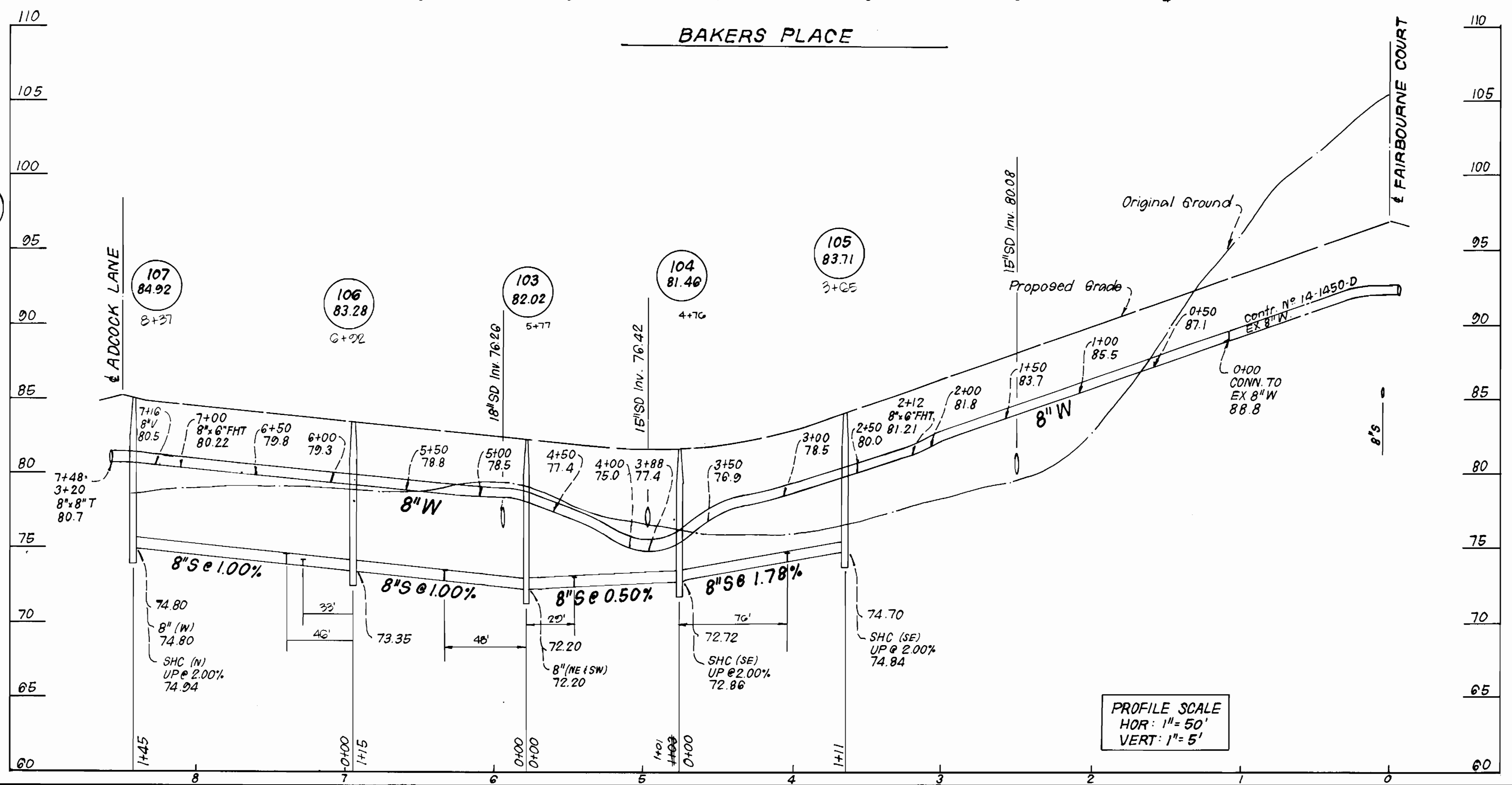


NOTES:

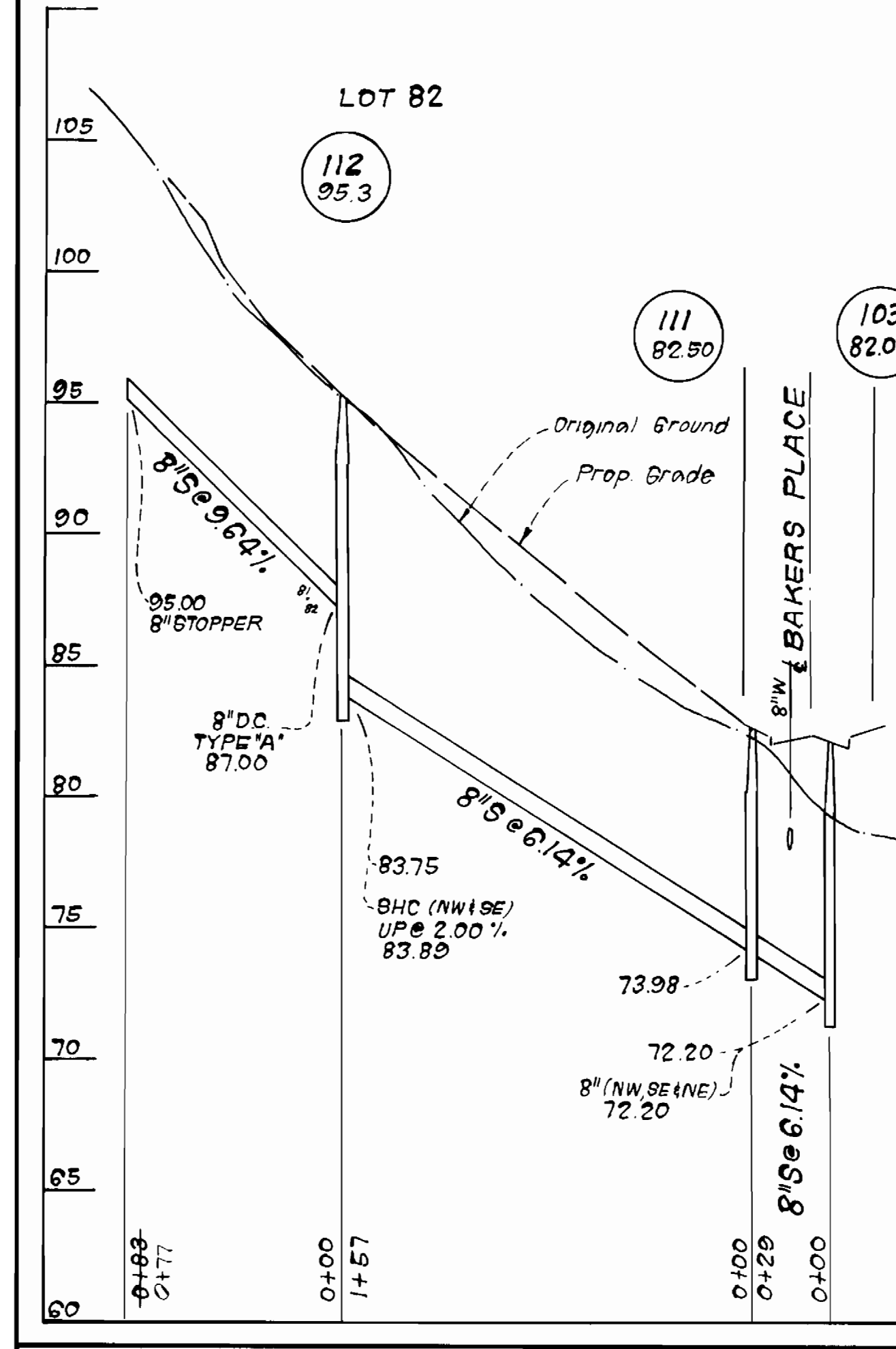
1. Erosion Control Fabric shall be Poly Filter-X as manufactured by Carthage Mills, Inc., Erosion Control Division, 124 West 68th Street, Cincinnati, Ohio; Laurel Erosion Control Cloth as manufactured by Laurel Plastics Inc., Madison, Main, or approved equal.
2. Rip-Rap shall be placed 6' each side of sewer as shown. Any disturbance to stream banks beyond these limits shall be protected with Rip-Rap.



RIP-RAP DETAIL



PROFILE SCALE
HOR: 1" = 50'
VERT: 1" = 5'



DEPARTMENT OF PUBLIC WORKS
HOWARD COUNTY, MARYLAND

Director of Public Works: *[Signature]* DATE: 8-19-82
 Chief, Bureau of Engineering: *[Signature]* DATE: 8-19-82
 Chief, Bureau of Utilities: *[Signature]* DATE: 8-19-82
 Chief, Land Development Div.: *[Signature]* DATE: 8-19-82

CFE CLARK - FINEPROCK & SACKETT
ENGINEERS - PLANNERS - SURVEYORS
11315 LOCKWOOD DRIVE SILVER SPRING, MARYLAND - 20904
(301) 593-3400



DES:	
DRN:	
CHK:	
DATE:	8-30-82
BY:	CN
NO.:	1
REVISION:	AS BUILT

PROFILES OF
WATER & SEWER MAINS

DATE: 600' SCALE MAP NO. _____ BLOCK NO. _____

CANBURY WOODS
SECTION 1 AREA 2
1ST ELECTION DISTRICT
CONTRACT NO. 14-1466-D

SCALE AS SHOWN
SHEET 3 OF 3