

TYPE OF BUILDING: (A) OFFICE/WAREHOUSE
NUMBER OF LOTS: 2 (TWO)
NUMBER OF WATER H.C.: 6 (SIX)
NUMBER OF SEWER H.C.: 5 (FIVE)

BENCH MARK
P+J BM #4
2" SPIKE SET IN 4" X 4" X 24" SILL * 203650, SOUTH SIDE DRIVEWAY RUN EAST

ELEV 217.40

- NOTES**
- APPROXIMATE LOCATION OF EXISTING MAINS ARE SHOWN. THE CONTRACTOR SHALL TAKE ALL NECESSARY PRECAUTIONS TO PROTECT EXISTING MAINS AND SERVICES AND MAINTAIN UNINTERRUPTED SUPPLY ANY DAMAGE INCURRED SHALL BE REPAIRED IMMEDIATELY TO THE SATISFACTION OF THE ENGINEER AT THE CONTRACTOR'S EXPENSE.
 - ALL HORIZONTAL CONTOURS ARE BASED ON MARYLAND STATE COORDINATES.
 - ALL PIPE ELEVATIONS SHOWN ARE INVERT ELEVATIONS.
 - CLEAR ALL UTILITIES BY A MINIMUM 6". CLEAR ALL POLES BY 2'-0" MINIMUM OR TUNNEL AS REQ'D ANY COST INCURRED TO THE CONTRACTOR FOR TUNNELING OR BRACING AT POLES, SHALL BE INCLUDED IN THE UNIT PRICE BID FOR CONSTRUCTION OF THE MAIN.
 - FOR DETAILS NOT SHOWN ON DRAWINGS, AND FOR MATERIALS AND CONSTRUCTION METHODS, USE HOWARD COUNTY DESIGN MANUAL, VOLUME II, STANDARD SPECIFICATIONS AND DETAILS FOR CONSTRUCTION. THE CONTRACTOR SHALL HAVE A COPY OF VOLUME II ON THE JOB.
 - CONTRACTOR SHALL LOCATE EXISTING UTILITIES A MINIMUM OF TWO WEEKS IN ADVANCE OF CONSTRUCTION OPERATIONS IN THE VICINITY OF PROPOSED UTILITIES AT HIS OWN EXPENSE.
 - CONTRACTOR SHALL NOTIFY THE FOLLOWING UTILITIES OR AGENCIES AT LEAST FIVE WORKING DAYS BEFORE STARTING WORK ON THESE PLANS: STATE HIGHWAY ADMINISTRATION - 571-5533; BALD GAS & ELECTRIC CO - CONT SERVICES 541-2505; BALD GAS & ELECTRIC CO UNDERGROUND DAMAGE CONTROL - 234-5021; BALD GAS & ELECTRIC - TROUBLE SHOOTING 238-9013; MISS UTILITY 1-888-0100; COLONIAL PIPELINE CO 795-1990; BUREAU OF UTILITIES, HOWARD CO DEPT. OF PUBLIC WORKS - 292-3300.
 - TREES AND SHRUBS ARE TO BE PROTECTED FROM DAMAGE TO MAXIMUM EXTENT. TREES AND SHRUBS LOCATED WITHIN THE CONSTRUCTION STRIP ARE NOT TO BE REMOVED OR DAMAGED BY THE CONTRACTOR.
 - CONTRACTOR SHALL REMOVE TREES, STUMPS, AND ROOTS ALONG LINE OF EXCAVATION. PAYMENT FOR SIX" REMOVAL SHALL BE INCLUDED IN THE UNIT PRICE BID FOR CONSTRUCTION OF THE MAIN.
 - ALL WATER MAINS TO BE 12" UNLESS OTHERWISE NOTED.
 - TREES OF ALL WATER MAINS TO HAVE A MIN. OF 4" COVER UNLESS OTHERWISE NOTED.
 - VALVES ADJACENT TO TREES SHALL BE STRAPPED TO TREES.
 - ALL FITTINGS SHALL BE BUTTERFUSED OR ANCHORED WITH CONCRETE IN ACCORDANCE WITH THE STANDARD DETAILS UNLESS OTHERWISE PROVIDED ON THE DRAWINGS.
 - FIRE HYDRANTS SHALL BE SET TO THE BURY LINE. ELEVATIONS SHOWN ON THE DRAWINGS. ALL FIRE HYDRANTS TO BE SET - 3" (THREE) BEHIND PROPOSED FACE OF CURB UNLESS OTHERWISE NOTED. ALL FIRE HYDRANTS SHALL BE STRAPPED & BUTTERFUSED WITH CONCRETE IN ACCORDANCE WITH SECTION 1003 OF THE STANDARD SPECIFICATIONS.
 - THE CONTRACTOR SHALL NOT OPERATE ANY WATER MAIN VALVES ON THE EXISTING WATER SYSTEMS.
 - ALL WATER HOUSE CONNECTIONS, INSIDE METER SETTINGS UNLESS OTHERWISE SHOWN.
 - ALL WATER HOUSE CONNECTIONS SHALL COMPLY WITH HOWARD CO STD. 3.01 AS SHOWN ON ACT. 40 SPEC. PROVS.
 - MINIMUM CURB RADIUS WILL BE AS SPECIFIED BY PIPE MANUFACTURER.
 - PLACE REGULATION "MEN WORKING" & "WARNING" SIGNS AS REQUIRED TO COMPLY WITH MD STATE HIGHWAY ADMINISTRATION'S MANUAL FOR HIGHWAY CONSTRUCTION AND MAINTENANCE OPERATIONS.
 - ALL SEWER MAINS SHALL BE 18" R.C.P., V.P.P., ACP CLASS 300 OR R/C UNLESS OTHERWISE NOTED.
 - THE CONTRACTOR SHALL PROVIDE A JOINT IN A SEWER MAIN WITHIN 2'-0" OF EXTERIOR MANHOLE WALL.
 - ALL MANHOLES SHALL BE 4'-0" INSIDE DIAMETER UNLESS OTHERWISE NOTED.
 - MANHOLES SHOWN WITH 12" AND 18" WALLS ARE BRICK MANHOLES ONLY.
 - MANHOLES DESIGNATED "WT." IN THE PLAN & PROFILE SHALL HAVE WATER TIGHT FRAME & COVER, STANDARD DETAIL 5002 WHERE WATER TIGHT MANHOLE FRAME & COVER IS USED, SET TOP OF FRAME 1'-6" ABOVE FINISHED GRADE UNLESS OTHERWISE NOTED ON THE DRAWINGS.
 - FOR CONCRETE ENCASEMENT DETAIL SEE HOWARD CO STD. SPECIFICATIONS & DETAILS #2-202.

PLAN
SCALE: 1"=50'

THE DEVELOPMENT PLAN IS APPROVED FOR SOIL EROSION AND SEDIMENT CONTROL BY THE HOWARD SOIL CONSERVATION DISTRICT. APPROVED: *James H. ...* 4/16/86
HOWARD SOIL CONSERVATION DISTRICT, DATE

REVIEWED FOR HOWARD SOIL CONSERVATION DISTRICT AND MEETS TECHNICAL REQUIREMENTS
Stamm L. ... 4/16/86
HOWARD SOIL CONSERVATION SERVICE, DATE

SEDIMENT CONTROL MEASURES FOR THIS CONTRACT WILL BE IMPLEMENTED IN ACCORDANCE WITH ARTICLE 15 OF THE C.D. SPEC. & SPP-86-101

DEPARTMENT OF PUBLIC WORKS
HOWARD CO., MARYLAND

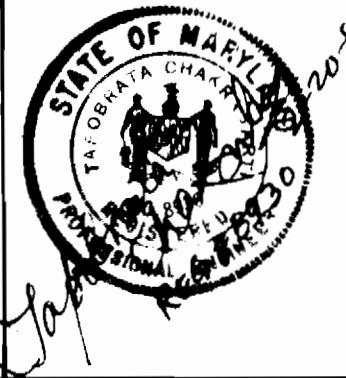
Ruth Bringer 4/18/86
DIRECTOR OF PUBLIC WORKS, DATE
CHIEF, BUREAU OF UTILITIES, DATE

William J. ...
CHIEF, BUREAU OF ENGINEERING, DATE
CHIEF, LAND DEVELOPMENT DIV., DATE

ENGINEER
GEORGE W. STEPHENS, JR.
AND ASSOCIATES, INC.

303 ALLEGHENY AVENUE
TOWSON, MARYLAND 21204

825-8120



DESIGNED BY	BY	NO.	REVISIONS	DATE
DAL	DAL	1	AVAIL 20' OF CONCRETE ENCASEMENT	6-10-84
DAL	DAL	2	ALL 8" WATER TO 12" WATER (EXCEPT FOR WATER SERVICE TO BLDGS A, B, C & PROFILE # 2)	8/10/84
DAL	DAL	3	RELATED WATER SERVICE FOR BLDG 'A'	9/10/84

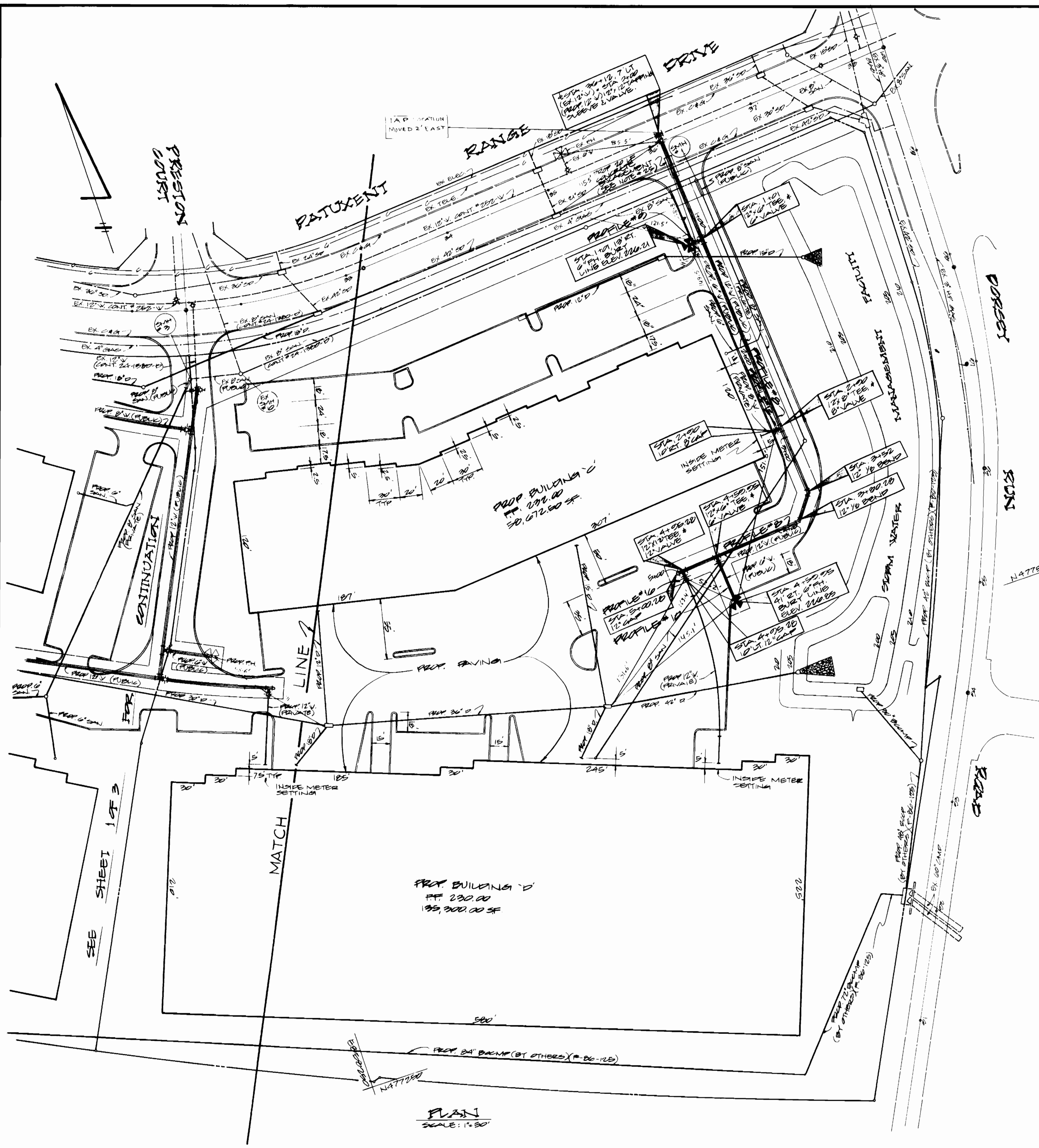
PAJ 05200

PLAN
FOR
PROPOSED WATER MAIN
CONTRACT NO. 24-1403-D

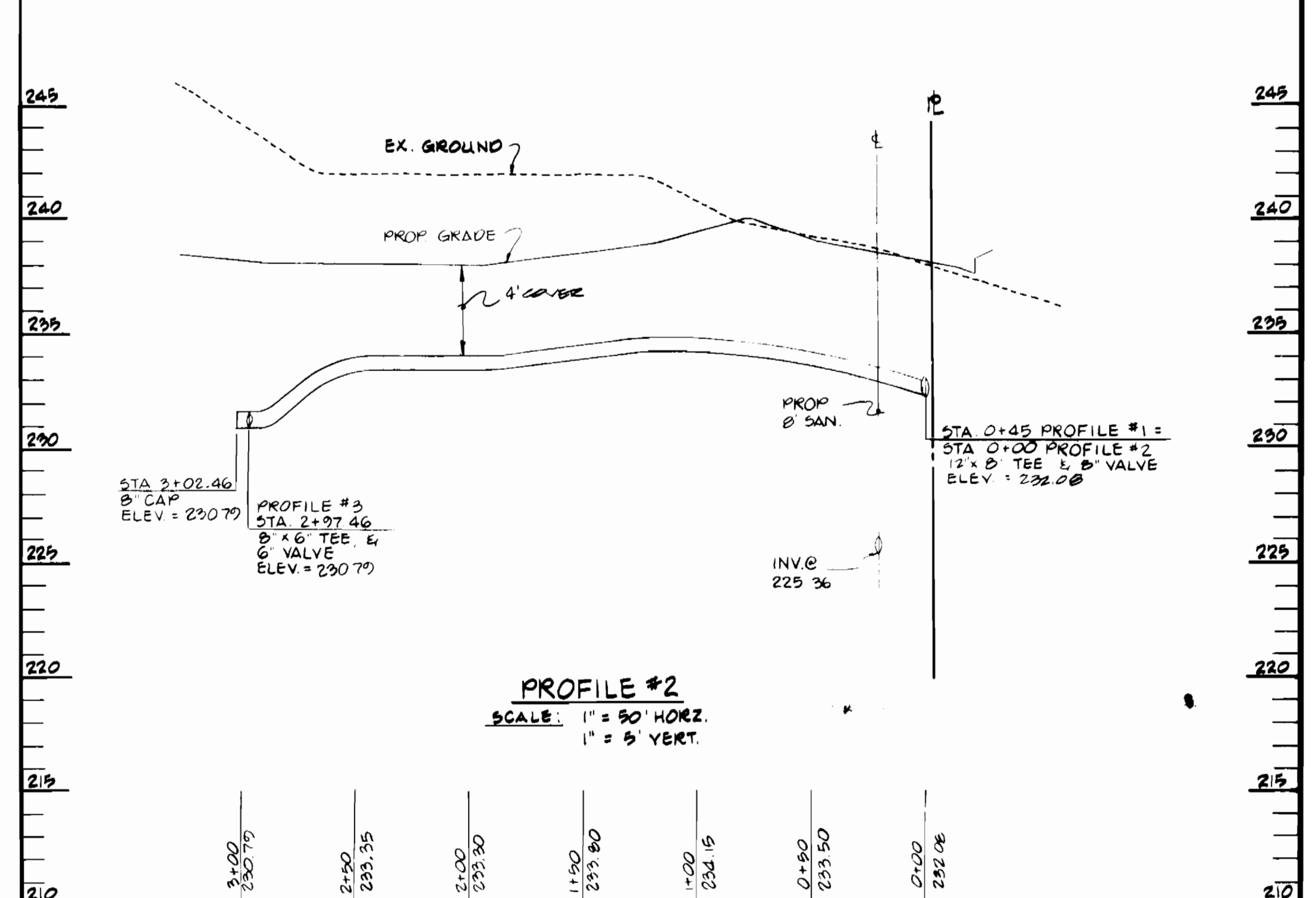
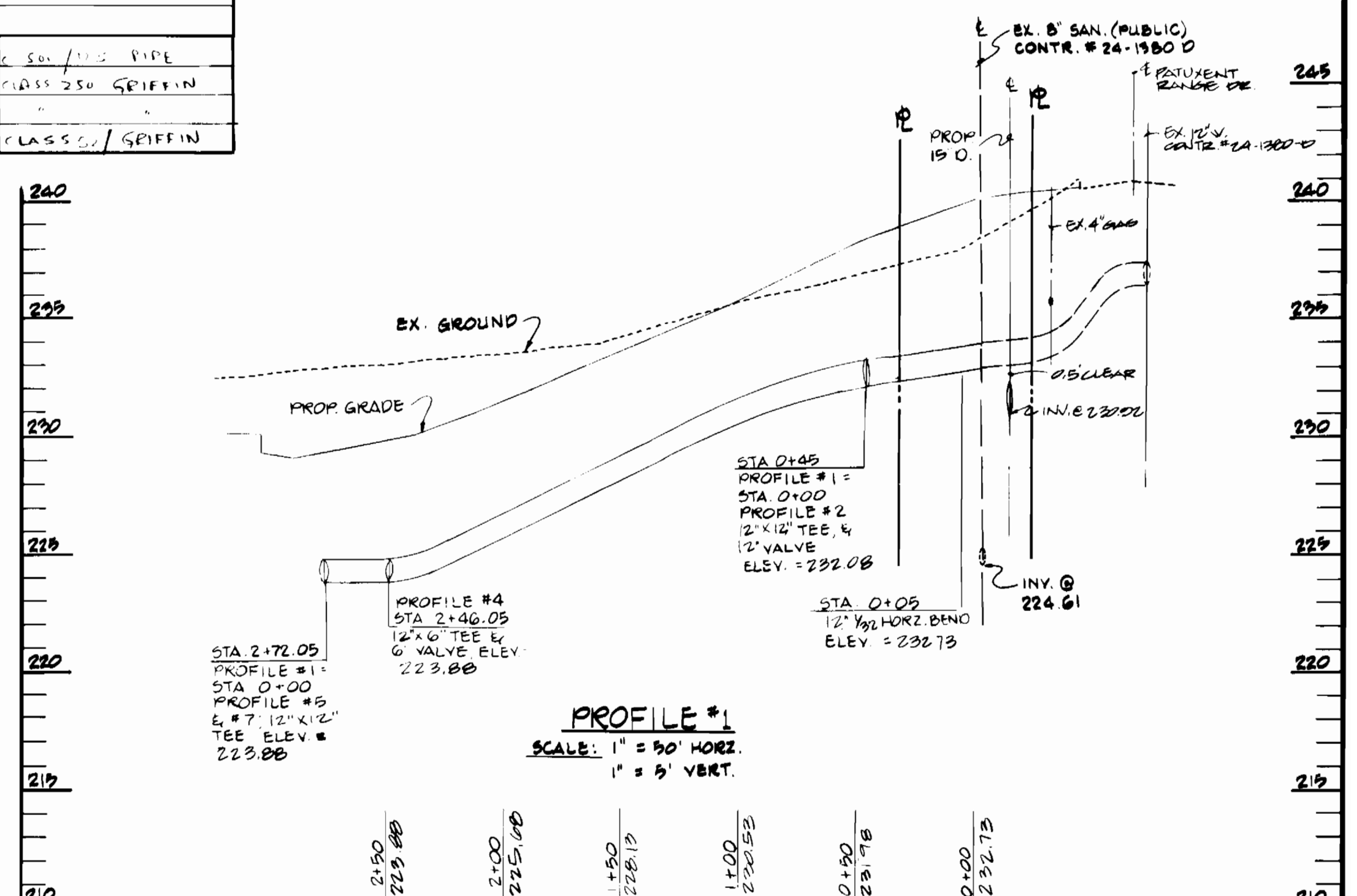
600' SCALE MAP NO. 49 BLOCK NO. 2

BALTIMORE WASHINGTON INDUSTRIAL PARK
(BLOCK 'D'-PARCEL 'B' & BLOCK 'D'-PARCEL 'E-1')
HOWARD COUNTY, MD
FEBRUARY 14, 1986

SCALE AS SHOWN
SHEET 1 OF 3



QUANTITIES			
ITEM	ESTIMATED	AS-BUILT	MATERIAL / SUPPLIER
12" D.I.P. SLEEVE & VALVE	1	1	US PIPE & FOUNDRY
12" D.I.P. TEE	3	3	CLASS 250 / US PIPE
12" 1/2" HOZ. BEND	1	1	D.O.
12" 1/2" HOZ. BEND	2	4	D.O.
12" X 6" TEE	4	4	D.O.
12" VALVE	6	6	500 / US PIPE
12" CAP	6	6	CLASS 250 / US PIPE
12" X 12" TEE	5	5	D.O.
6" F.H. VALVE	5	5	500 / US PIPE
6" F.H.	5	5	500 / US PIPE
6" D.I.P.	223'	200'	CLASS 52 GRIFFIN
6" D.I.P.	152'	120'	D.O.
STANDARD SANITARY MANHOLE	2		
6" SANITARY	25'		
6" VALVE	2	2	500 / US PIPE
6" X 6" TEE	1	1	CLASS 250 GRIFFIN
6" CAP	2	2	
12" D.I.P.	1377'	1751'	CLASS 52 / GRIFFIN



THE DEVELOPMENT PLAN IS APPROVED FOR SOIL EROSION AND SEDIMENT CONTROL BY THE HOWARD SOIL CONSERVATION DISTRICT, APPROVED *Stephen L. John* 4/16/06

REVIEWED FOR HOWARD SOIL CONSERVATION DISTRICT AND MEETS TECHNICAL REQUIREMENTS. *John M. S. ...* 4.16.06

SEDIMENT CONTROL MEASURES FOR THIS CONTRACT WILL BE IMPLEMENTED IN ACCORDANCE WITH ARTICLE 15 OF THE STD. SPEC & SUP. 02-101

DEPARTMENT OF PUBLIC WORKS
 HOWARD CO., MARYLAND
Robert Bauman 4-18-06
 DIRECTOR OF PUBLIC WORKS / CHIEF, BUREAU OF UTILITIES, DWBS

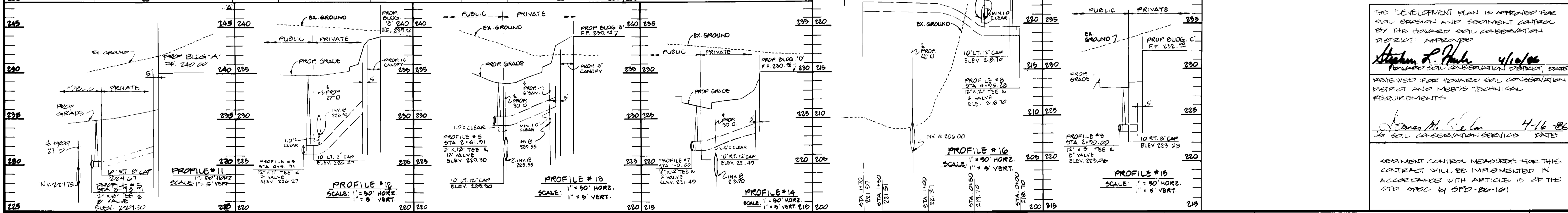
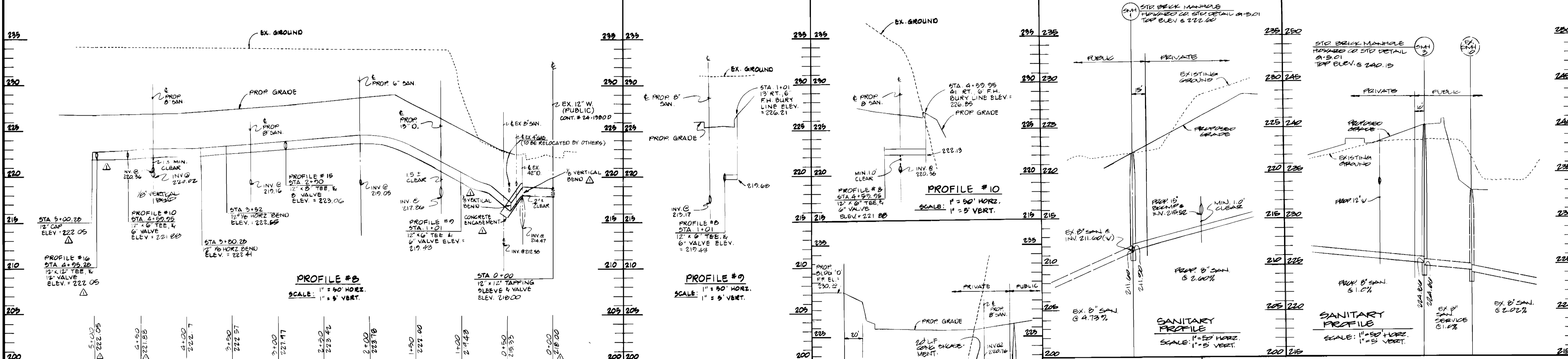
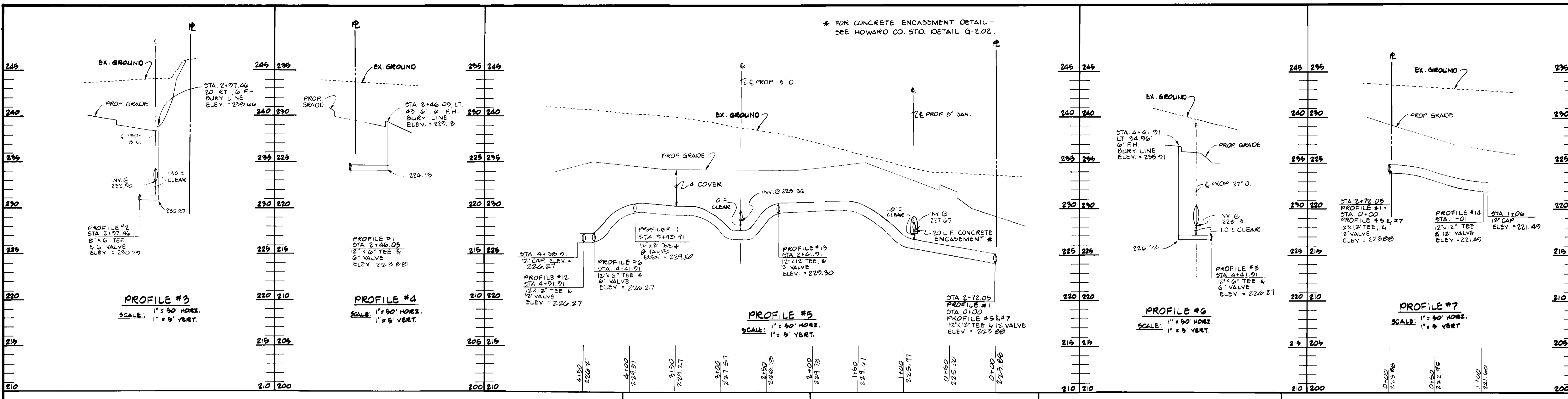
ENGINEER
GEORGE W. STEPHENS JR.
AND ASSOCIATES, INC.
 303 ALLEGHENY AVENUE
 TOWSON, MARYLAND 21204
 825-8120



DESIGNED BY	CHECKED BY	DATE
FMB/KLB	FMB/KLB	4/10/06
FMB/KLB	JC	4/10/06

PLAN
PROPOSED WATER MAIN
 CONTRACT NO. 24-1463-D
 600' SCALE MAP NO. 48 ELEC. NO. 3

BALTIMORE WASHINGTON INDUSTRIAL PARK
 HOWARD COUNTY, MD
 FEBRUARY 14, 1981
 SCALE AS SHOWN
 SHEET 2 OF 3



DEPARTMENT OF PUBLIC WORKS
HOWARD CO, MARYLAND

ENGINEER
GEORGE W STEPHENS, JR
AND ASSOCIATES
303 ALLEGHENY AVENUE
TIMONSON, MARYLAND 21204
865-8120

DESIGNED EMB	CAL	BY	NO	REVISIONS	DATE
DRWN: EMB			1	ALL WATERS TO 2" WATER (JUST FOR WATER)	8/10/86
CHEKED: TC			2	SEWERS TO BLDG. 'A' & 'C' & PROFILE #2	8/19/86
			3	RELOCATED WATER SERVICE FOR BLDG. 'A'	8/19/86

PLAN
FOR -
PROPOSED WATER MAIN
CONTRACT NO. 24-1403-D

BALTIMORE WASHINGTON INDUSTRIAL
PARK (BLOCK 'B' PARCEL 'D' & BLOCK 'D' PARCELS 'A' & 'C')

THE DEVELOPMENT PLAN IS APPROVED FOR SOIL EROSION AND SEDIMENT CONTROL BY THE HOWARD SOIL CONSERVATION DISTRICT APPROVED
Stephen P. Rank 4/10/86
FORWARD SOIL CONSERVATION DISTRICT, EMB
REVIEWED FOR HOWARD SOIL CONSERVATION DISTRICT AND METS TECHNICAL REQUIREMENTS
James M. Shelton 4-16-86
US SOIL CONSERVATION SERVICE EMB
SEDIMENT CONTROL MEASURES FOR THIS CONTRACT WILL BE IMPLEMENTED IN ACCORDANCE WITH ARTICLE 15 OF THE STD SPEC BY SPD-86-101